

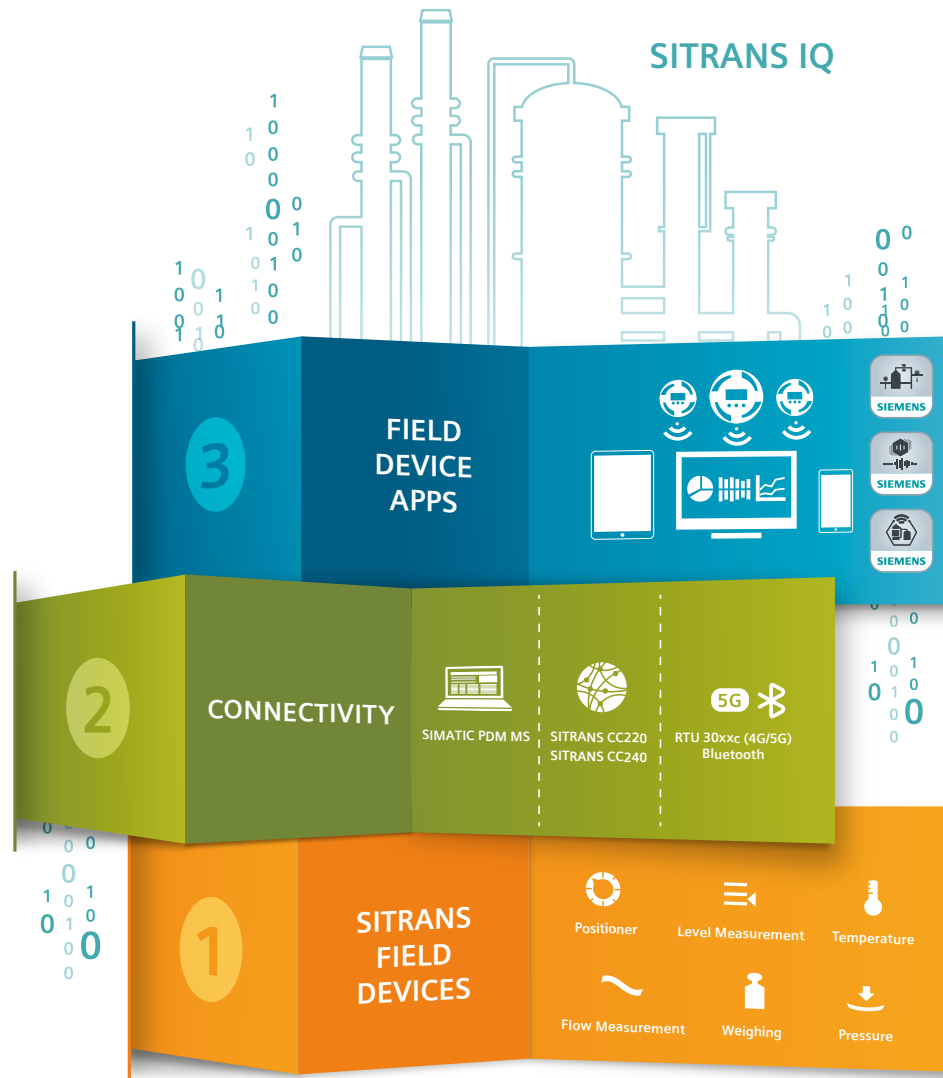
A man with glasses and a plaid shirt is smiling while looking at a tablet in a factory setting. The background shows industrial machinery. Overlaid on the image are various digital graphics: a blue 3D model of a pipe or valve, pink and purple wavy lines, and a grid of small icons on the left side.

SIEMENS
Ingenuity for life

Fully exploit the potential
of your data

Digitalization in process instrumentation

[siemens.com/pi/digitalization](https://www.siemens.com/pi/digitalization)



SITRANS IQ –
overview of the entire plant

Enjoy increased plant transparency with our digital platform SITRANS IQ for digital services. Schedule servicing intervals better, based on plant status if required, and make your maintenance and your entire plant more efficient.

The SITRANS IQ concept is essentially based on three levels:

- 3 Cloud or on-premise apps that efficiently analyze and display data to enable plant operators to optimize plant operation and maintenance.
- 2 Connectivity elements to transport this data without affecting the automation task.
- 1 SITRANS field devices, where extensive and sometimes still unused status data is collected.

Completely consistent from the field to the cloud

In addition to process parameters, a plant generates a constantly high volume of status data: friction coefficients every time a valve moves, tiny changes in echo signal strength, constantly rising temperatures in the electronics, or changes in other parameters. What's new is that this status data can now be extracted from the plant, stored, analyzed, and prepared to meet the specific needs of the operator and continuously lower marginal costs. From targeted monitoring of critical measurement points to complete asset management covering instrumentation for multiple plants, the opportunities are unlimited. Talk to us.

Into the digital world with SITRANS IQ
What's required is a structure with suitable connectivity solutions to link the field level with a higher control level, the cloud, or an on-premise solution. That's why we devised SITRANS IQ.

Optimum connection

Our field devices reliably and accurately measure primary values. But to obtain the previously unused stranded data from the field level, you need devices that can establish connectivity between the field level and the higher control level and also create on- and off-premise solutions.

1 SITRANS Field Devices

For positioning control, fill level, pressure, temperature, flow, or weight: We have a portfolio of measuring devices for field instrumentation for you that's unique anywhere in the world. These devices have become established in many industries, so you get measurement results with maximum precision and absolute reliability.



IIoT starts on the field level. The hardware on which SITRANS SCM IQ is based are wireless, robust industrial Internet of Things (IIoT) sensors or more precisely: SITRANS MS200 multisensors. They're easy to install on mechanical plant assets such as pumps, gearboxes, and compressors.

2 Connectivity

The right solutions for all plants

In most cases, greenfield plants already have a consistent, end-to-end communications structure using HART, Profibus, or Profinet, to render data from the field devices transparent. Most brownfield plants, however, lack connectivity with the field level.

All information at a glance

The SIMATIC PDM Maintenance Station is the right solution for efficiently monitoring the status of smart field devices, regardless of the automation and distributed control system used. The data is safely transferred from the field to the cloud using our smart cloud gateways SITRANS CC220 and SITRANS CC240.

For more information, see [siemens.com/sitranscc240](https://www.siemens.com/sitranscc240)

Optimize processes

The information obtained is also displayed on the onboard web server, which facilitates many on- and off-premise applications for monitoring and optimization. Additional solutions are offered by SIMATIC CFU and SIMATIC ET 200SP, which can also gather diagnostic data from the field level and make it available for processing.

Transmitting both local and remote data

Some of our field devices are Bluetooth-capable. They can also transmit data using the latest mobile wireless standards, which will include 5G in the future. This includes the SITRANS FM MAG 8000 communications module. Our offering is rounded out by the SIMATIC RTU 3030C remote unit, which works in conjunction with a field device to record process data from extremely remote measuring points.

3 Field Device Apps

Apps to make smart use of plant data

We have joined forces with co-creation partners to develop apps that will monitor the plant for you. The apps provide life lists, diagnostic data, and change and knowledge management. They display patterns and monitor limits. Our apps use the data obtained from field level, combine it, and generate valuable KPIs that help you with plant optimization:

- SITRANS SCM IQ: Smart Condition Monitoring with IIoT sensors enables an intelligent monitoring of machine conditions. The system is intuitive to use and detects and reports any deviations from the intended operating state at an early stage.

For more information, see [siemens.com/scmiq](https://www.siemens.com/scmiq)

- SITRANS serve IQ app: Gathers and analyzes process data from very distant measurement points, which it obtains from a SIMATIC RTU 3030C or a SITRANS FM MAG 8000.

For more information, see [siemens.com/serveiq](https://www.siemens.com/serveiq)

- SITRANS store IQ: For intelligent inventory monitoring and management. Can easily implement cloud-based real-time monitoring and provide a basis for effective inventory management.

For more information, see [siemens.com/storeiq](https://www.siemens.com/storeiq)

- SITRANS mobile IQ app: App for easy parameterization of Bluetooth-capable devices in the field.

For more information, see [siemens.com/mobileiq](https://www.siemens.com/mobileiq)

- Valve Mon app: Shortens downtimes and maintenance times, increasing plant availability.

For more information, see [siemens.com/industry-suites](https://www.siemens.com/industry-suites)

Learn more about digitalizing your process plant – and how you can benefit from comprehensive field level integration.

You can find us at:
[siemens.com/pi](https://www.siemens.com/pi)

Twitter: @SiemensSensors
Facebook: SiemensSensors
#sitransiq

Published by
Siemens AG

Digital Industries
Process Automation
Östliche Rheinbrückenstr. 50
76187 Karlsruhe, Germany

For the U.S. published by
Siemens Industry Inc.

100 Technology Drive
Alpharetta, GA 30005
United States

Article No.: DIPA-B10181-00-7600
Dispo 27900
WS 09210.0
© Siemens 2021

Subject to changes and errors. The information provided in this brochure contains descriptions or performance characteristics which, in case of actual use, do not always apply as described or which may change as a result of further development of the products. The desired performance characteristics are only binding if expressly agreed in the contract. Availability and technical specifications are subject to change without notice.

All product designations may be trademarks or product names of Siemens AG or supplier companies, the use of which by third parties for their own purposes may violate the rights of the owners.

Think digitally

Digital Services –
remote support in real time

Digital Services offer you remote support from experts in real time. Service activities can be performed via remote access using highly effective, state-of-the-art communications media, providing the best means of improving flexibility, efficiency, and productivity. An expert gives the local technician detailed information, for example via the service device SIPIX SD for Desktop Sharing or Remote Assisted Collaboration.

More on Remote Field Services and SIPIX SD
[siemens.com/sipix](https://www.siemens.com/sipix)

Watch the video
on SIPIX SD



PIA Life Cycle Portal –
the selection and design tool

The faster way to the right device for your measurement task: The PIA Life Cycle Portal offers you guided product selection and easy configuration for all products in the SITRANS family.

To the selection tool: [siemens.com/pia](https://www.siemens.com/pia)

Discover our full range at:
[siemens.com/pi/digitalization](https://www.siemens.com/pi/digitalization)