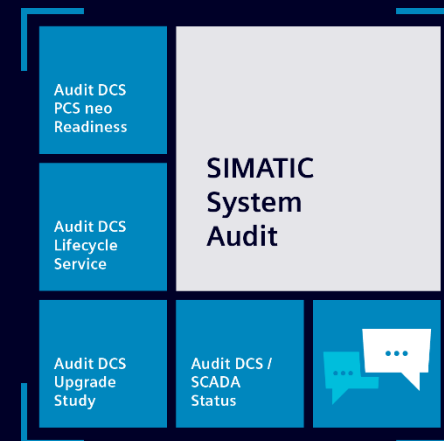




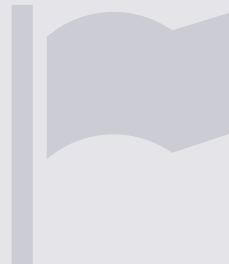
# | SIMATIC System Audit

Increased system availability thanks to detailed knowledge of the system status



# Challenge

How to determine the system status of a plant?



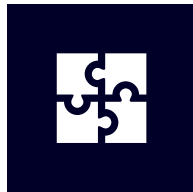
How can the plant remain productive and economical throughout the lifecycle?

---



How can the availability and serviceability of the SIMATIC automation systems used be ensured?

---



How do you optimally coordinate products, systems and services?

---



How is an equipment upgrade or lifecycle services contract designed and implemented in a meaningful way?

# SIMATIC System Audit

## Clarification of equipment condition and serviceability



A SIMATIC System Audit **basically** establishes transparency of the current condition and serviceability of the SIMATIC automation system.

---

Even if there are no current issues, performing a SIMATIC System Audit is recommended as a basis for future service strategies, upgrades, or lifecycle service contracts.

---

The Audit provides a detailed insight into the quality of the project engineering and the current status of a **SIMATIC PCS 7 System** or a **WinCC-based SCADA** system with subordinate S7 level.

---

Based on its scalability, diverse system configurations and system platforms can be evaluated with respect to different criteria.

# SIMATIC System Audit

## Documentation of audit results, indications and recommendations



This service provides specific indications and recommendations in order to recover serviceability, upgradeability and to improve the current system status.

---

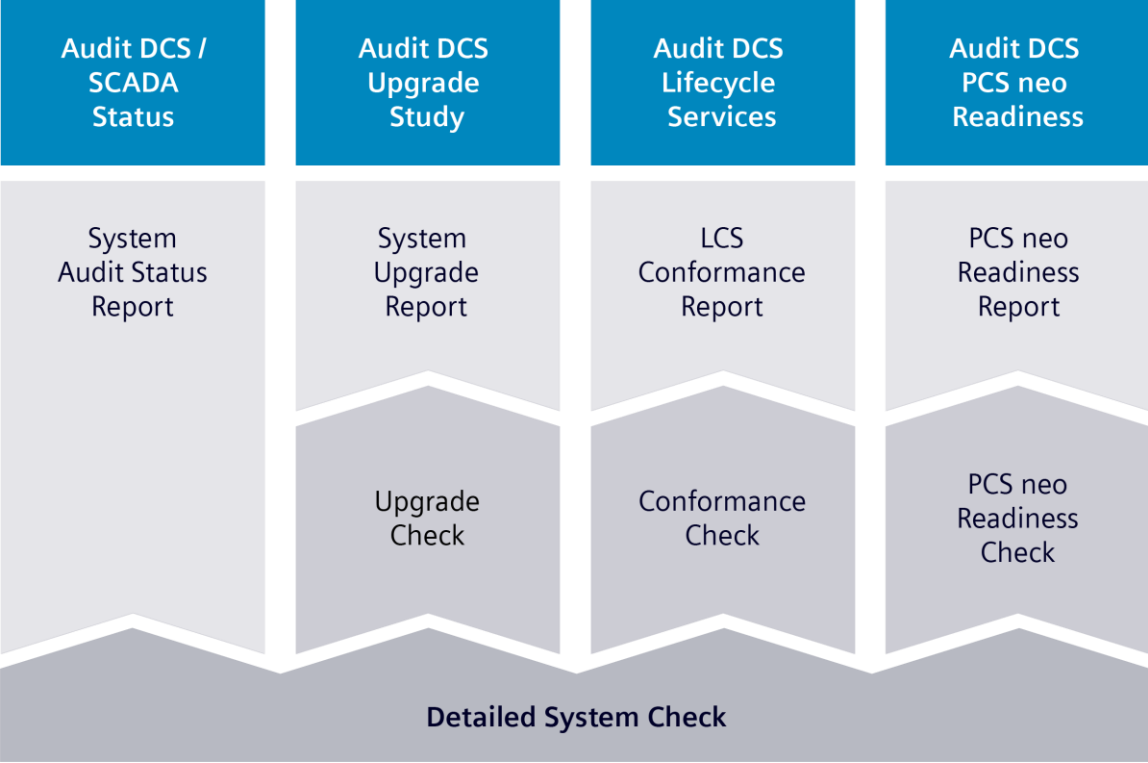
The results of the audits performed are documented in a corresponding report in each case, together with recommendations for correcting the problems identified or deviations from existing standards.

---

SIMATIC System Audit for DCS- and SCADA-systems provides evaluation of systems which are installed on physical as well as virtualized system-platforms.

# SIMATIC System Audit

## Modular structure



The basis for all modules is a “Detailed System Check”.

Here, the product lifecycle status of the Siemens products (types) used is identified and the general serviceability or upgradeability is derived from this.

In addition, a detailed analysis of the system diagnostic data is performed.

Depending on the module, this is followed by an “Upgrade Check”, a “Conformance Check” or a “PCS neo Readiness Check”.

# SIMATIC System Audit

## Module “Audit DCS/SCADA Status”

Audit DCS /  
SCADA  
Status

### “Audit DCS/SCADA Status”

---

... enables detailed SIMATIC PCS 7 system analysis to evaluate the plant status as a basis for ...

- Decision for system extensions
- Development of service strategies
- Increase of the general system availability

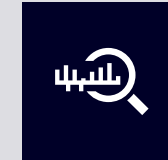
The complete SIMATIC PCS 7 system is analyzed, with assessment of the system configuration and the current diagnostic data.

The result of the audit is documented in a **System Audit Status Report**.

The focus of this module is to evaluate the serviceability and current system status of the SIMATIC PCS 7 system.

### Objective

---



Analysis of the respective system with a preferable high degree of identification of potential risks



Definition of suitable measures for the general increase of the system availability or for the achievement of the nominal state.

# SIMATIC System Audit

## Module “Audit DCS Upgrade Study”

Audit DCS  
Upgrade  
Study

### “Audit DCS Upgrade Study”

---

... is a specialized service module for preparing a SIMATIC PCS 7 system upgrade project.

Within this module general topics, e.g. evaluation of system-serviceability and evaluation of current system status are implemented, based on the service module “Audit DCS/SCADA” Status.

However, “System Audit DCS Upgrade Study” is more focused on upgrade- and updateability.

The results and recommendations are documented in a “**System Upgrade Report**”.

Scope of validity: from PCS 7 V6.1 SPx

### Objective

---



Analysis of the respective system with a preferable high degree of identification of potential risks.



Detailed preparation for efficient implementation of a SIMATIC PCS 7 system upgrade.

# SIMATIC System Audit

## Module “Audit DCS Lifecycle Service”

Audit DCS  
Lifecycle  
Service

### “Audit DCS Lifecycle Service”

---

... contains in general the same system checks as “Audit DCS Status”.

In addition a “**Conformance Check**” with respect to the planned conclusion of a Lifecycle Contract will be applied and the result will be documented in a “**Lifecycle Conformance Report**”.

This report includes special advices in regard to contractual aspects, which are to be considered in preparation phase of a LCS contract, e.g. measures to recover long-term serviceability and upgradeability of the respective SIMATIC PCS 7 system.

### Objective

---



Preparation of a long-term SIMATIC PCS 7 Lifecycle Service Contract, with up to 15 years duration

# SIMATIC System Audit

## Module “Audit DCS PCS neo Readiness”

Audit DCS  
PCS neo  
Readiness

### The “System Audit DCS PCS neo Readiness”

---

... module is focused exclusively on checking the framework conditions for an evolution of an existing SIMATIC PCS 7 system to SIMATIC PCS neo.

Based on the SIMATIC PCS 7 engineering data, an analysis of the SIMATIC PCS 7 functions used in the project and their implementation in the project is performed with regard to a realization of the functions based on SIMATIC PCS neo.

In addition, all hardware components used in the SIMATIC PCS 7 project are checked for compatibility with SIMATIC PCS neo.

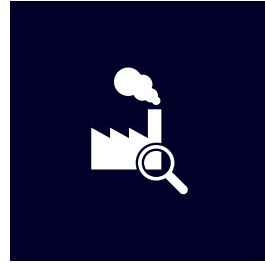
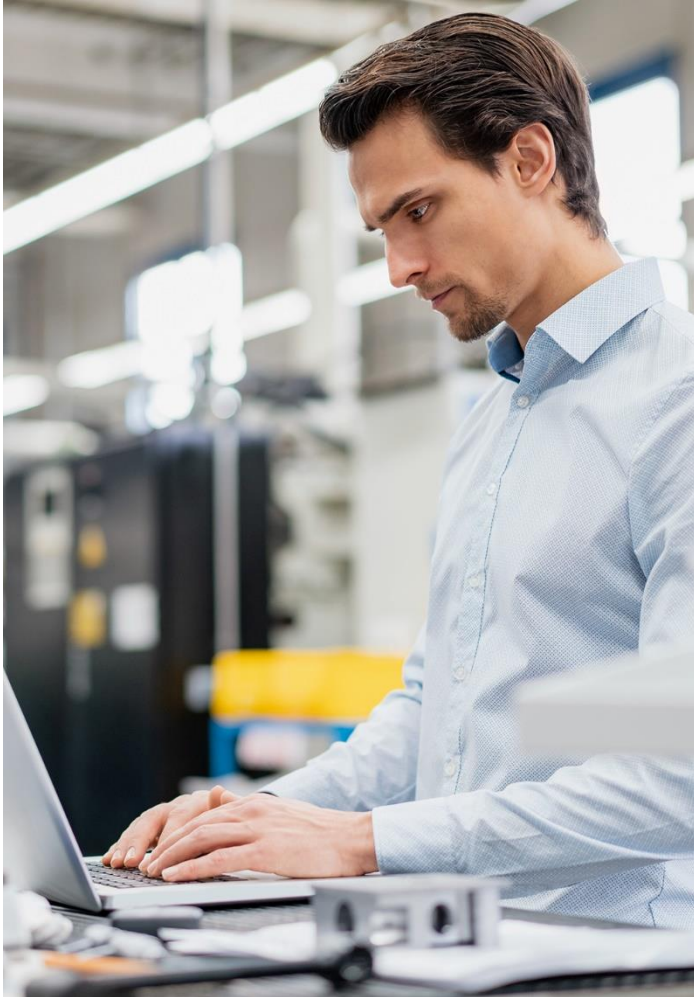
### Objective

---



Evaluation of the framework conditions and necessary measures for the evolution of a SIMATIC PCS 7 project to SIMATIC PCS neo

# Why you should choose a SIMATIC System Audit



## Serviceability

A SIMATIC system audit basically provides transparency about the current plant status and the serviceability of the SIMATIC automation system.

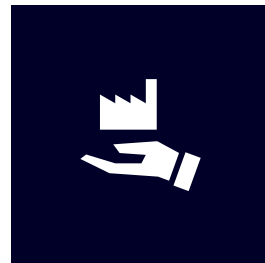
---



## Service contracts

Performing a system audit is recommended as a basis for future service strategies and is mandatory for preparing long-term lifecycle service contracts.

---



## System status

With different features, the modular portfolio enables system status to be determined as required and downtime and standstill to be reduced.

Let us know how we can support you!



You want to know more?

Contact your local Siemens partner

[Contacts at Siemens](#)

[www.siemens.com/ssaa](http://www.siemens.com/ssaa)



# Disclaimer

© Siemens 2022

Subject to changes and errors. The information given in this document only contains general descriptions and/or performance features which may not always specifically reflect those described, or which may undergo modification in the course of further development of the products. The requested performance features are binding only when they are expressly agreed upon in the concluded contract.

All product designations, product names, etc. may contain trademarks or other rights of Siemens AG, its affiliated companies or third parties. Their unauthorized use may infringe the rights of the respective owner.