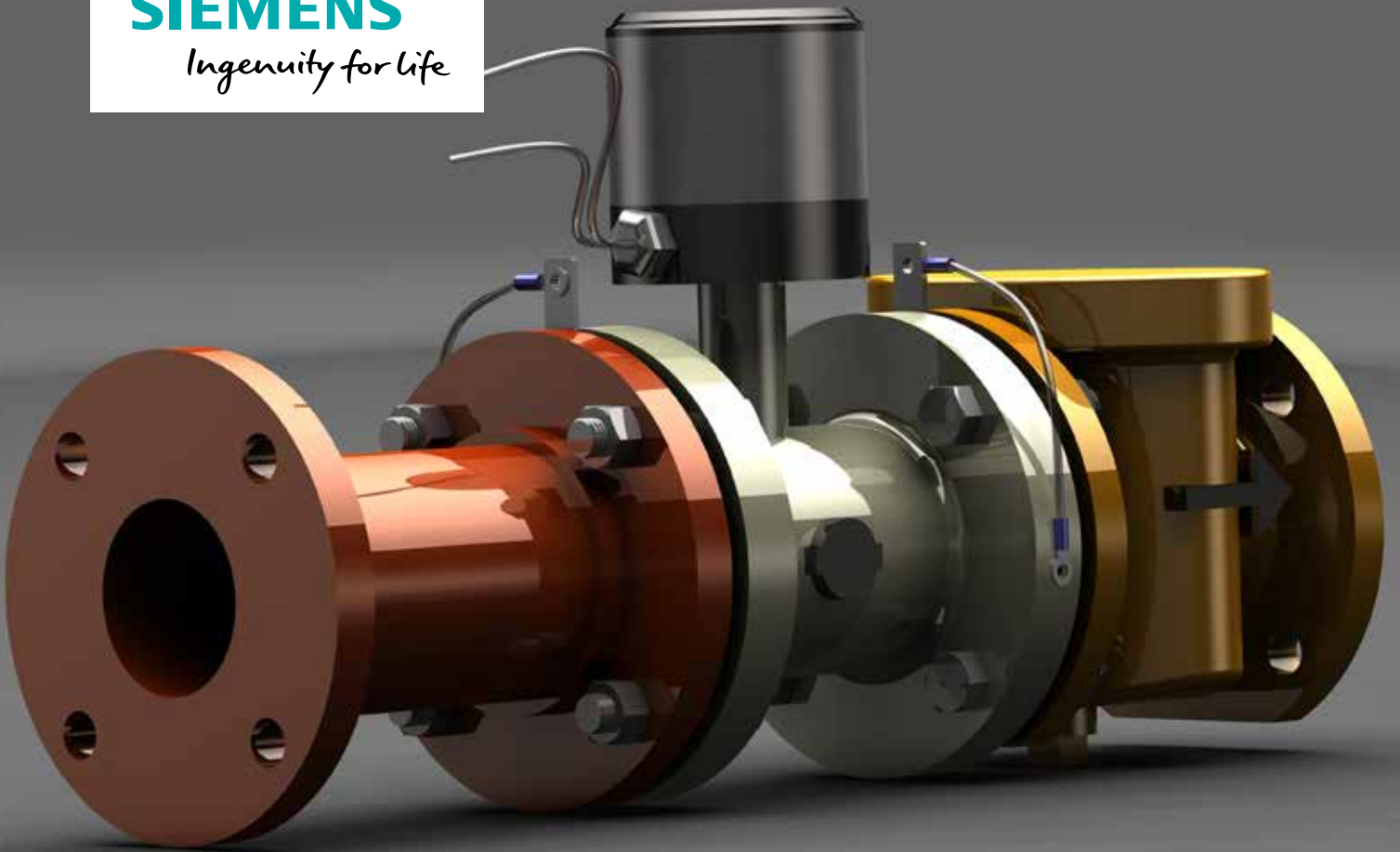


**SIEMENS**

*Ingenuity for life*



## Custom Meter Configuration

An Engineering Instrument Solution for the  
SITRANS MAG8000 Flow Meter

# Reducing cost with a flow meter designed specifically for you

Siemens Engineering Instrument Solutions (EIS) team is proud to offer new customized features for Siemens magnetic flow meters. This enables us to take our high performance magnetic flow meter products and customize them to meet our customers' specific needs. By offering out of the box features that would normally be configured in the field, our customers experience reduced startup time and cost savings.

## Custom Cabling Options:

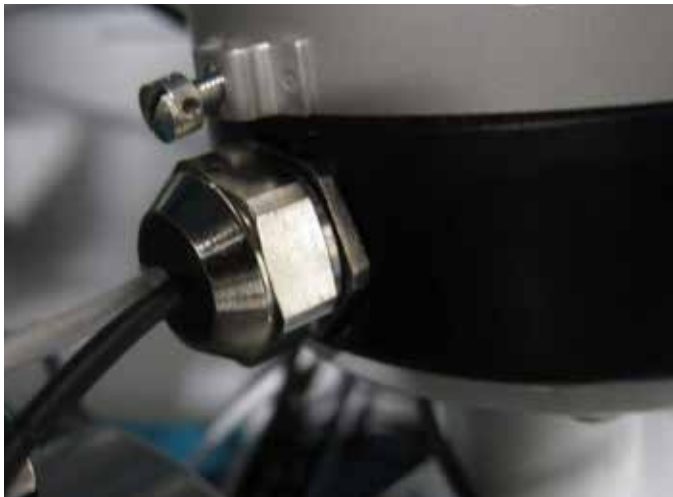
Siemens recognizes that many water distribution facilities utilize both the Sensus protocol and pulse output. To accommodate this, Siemens utilizes dual cable glands to route both communications out of the same side of the transmitter leaving the remaining side available for our 10 year battery option. Your Siemens transmitter will arrive potted with your specified cables to maintain IP68/NEMA 6P ratings.

## Custom Tagging Options:

Siemens is also able to customize our meter tagging to match your requirements. During the quoting process Siemens and you will agree on what markings will be included in the tagging. These tagging layouts will be signed off by both Siemens and the customer to ensure future orders follow the same requirements.

## Custom Meter ID Numbers:

With your input, Siemens is able to program individualized meter ID numbers to correspond with your pre-existing billing system (AMI/AMR).



Siemens dual cable glands.

## Custom Programming Options:

One of the most frequent requests Siemens receives is for custom programming of the transmitter display and outputs.

### • Billing Digit Format

Siemens is able to modify the location of the decimal point on the register based upon customer input.

### • Register Units

Siemens can accommodate any flow or volume unit that the customer desires.

### • Pulse Outputs Rates/Functionality

Siemens can modify the pulse frequency to match your specification. This allows for easy integration into your billing system. With these features, Siemens is able to customize the output to match your unit allows for seamless integration of Siemens meters into your existing systems and reduces downtime for replacements.

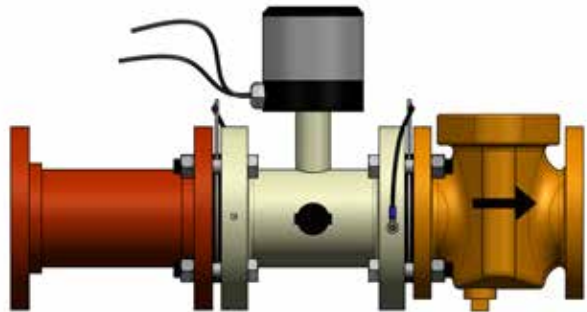
## Adding Spools and Strainers

While it is not a standard offering, Siemens can provide a quotation for spools and strainers to accompany the meter. Spools and strainers can be mounted to the meter prior to shipment. These factory ready assemblies can then be dropped directly into your system.

By adding the spool, Siemens is able to provide a solution meant for that specific application and lay length. This information would have to be provided by you as the customer during the quoting process.

While Siemens meters have no inline components and do not have the same risks of being damaged by debris as mechanical turbine meters, Siemens is able to provide strainers for your applications upon request. The strainers can be mounted to the meter prior to shipment to ensure easier installation.

Please note that these features will only be quoted at the customer's request. This solution is ideal for replacing existing meters where the lay length is already defined.



Siemens is able to add Spools and Strainers to custom lay lengths.

# Cost effective solution designed for the distribution market.

Siemens was approached by a customer who wanted to replace their existing mechanical flow meters with a drop-in solution that integrated seamlessly with their billing system. In order to make the replacement meters as cost effective as possible, any solution would have to be integrated into pre-existing lay lengths that were left from the previous mechanical meters.

Siemens Application Engineers designed a customized solution using the Sitrans Mag 8000 magnetic flow meter. The Sitrans Mag 8000 was the logical choice because, unlike mechanical meters, magnetic flow meters have no moving parts that wear after years of use. Siemens Mag 8000s have a 10 year battery life, a fully potted transmitter, and Sensus communications available, making it the ideal choice for the distribution market. Finally, Siemens magnetic flow meters have proven to operate at low flow rates to ensure accurate readings.

To accommodate the difference in lay lengths left by previous meters, Siemens Engineers designed a custom flow solution to fit the customer's needs. Additionally, the solutions were designed to incorporate strainers to protect end customers from debris. Since the flow meter was designed to drop in, installation and start-up was seamless and efficient.

To support MRO and modernization plans, this custom design is now a standard solution available for re-order. The customer is now planning to modernize their flow monitoring system with expanded use of custom flow meters from Siemens.

## Benefits of Siemens Magnetic flow meters:

While the customization features allow for you to fine tune the solutions, we utilize the already strong capabilities of our magnetic meter. These benefits include:

- Remote Transmitter option with factory-mounted cables



Billing digits configured per customer's requirements



and connectors

- No moving parts resulting in less wear and tear
- Bidirectional measurement with no reduction in accuracy
- Unrestricted flow tube for minimal pressure loss even at high flow rates
- IP68/ NEMA 6P enclosure and cable, allowing for sensor burial and/or operation in flooding conditions
- Durable enough to withstand extreme temperatures, high humidity and erosion.

## Application Datasheet:

If you are interested in customizing Siemens magnetic flow meters for your applications please request and complete an application data sheet. This information will enable us to better quote the features best suited for your needs.

For pricing and option availability please contact: [eis.solutions.us@siemens.com](mailto:eis.solutions.us@siemens.com)



**Measuring everything that matters:**  
[usa.siemens.com/pi](http://usa.siemens.com/pi)

**Siemens Process Instrumentation offers best-in-class measurement and seamless integration into your automation system. We are the total solution provider for flow, level, pressure, temperature, weighing, positioners and more.**

**Follow us on:**

[www.facebook.com/siemensii](http://www.facebook.com/siemensii)

<https://twitter.com/siemensii>

[www.youtube.com/siemens](http://www.youtube.com/siemens)

<https://blogs.siemens.com/measuringsuccess>



Siemens Industry, Inc.  
Process Industries and Drives  
100 Technology Drive  
Alpharetta, GA 30005  
1-800-365-8766  
[info.us@siemens.com](mailto:info.us@siemens.com)

Subject to change without prior notice  
Order No.: PIBR-00034-0418  
All rights reserved  
Printed in USA  
© 2018 Siemens Industry, Inc.

Subject to changes and errors. The information given in this document only contains general descriptions and/or performance features which may not always specifically reflect those described, or which may undergo modification in the course of further development of the products. The requested performance features are binding only when they are expressly agreed upon in the concluded contract.

All product designations may be registered trademarks of Siemens AG. All other designations in this document may represent trademarks whose use by third parties for their own purposes may violate the proprietary rights of the owner.