



| TIA Selection Tool

Release Notes V2022.09

Features

Only available in offline version

- **Integrated drive dimensioning** (see [here](#))
- **Control Panel Design** - Electrical dimensioning of main circuits according to IEC and UL (see [here](#))
- **SIMATIC MICRO-DRIVE**: Direct provision of the motor database in TIA Selection Tool (no subsequent download required)

Offline and Cloud Version

- **ET 200SP HA**: Motor starter implemented
- New configurator **SIRIUS 3RM1**
- **Connection system**: Optimization of cable selection
- **SIMOCODE**: Note on software incl. link



Product updates

New products and updates for ...

Controllers

- Adjustments for extended information S7-1200 and S7-1500
- Adaptation of the logic for selection of the appropriate memory cards for SIPLUS RIC

I/O systems

- ET 200pro: CM IM PN M12 M12-L S (6ES7194-4AL00-0AA0) added
- ET 200pro: CM PM-E M12-L (6ES7194-4BL00-0AA0) added
- ET200iSP: Indication of power dissipation corrected for article 6ES7138-7EC00-0AA0
- ET 200SP HA: New bus adapters added in accessory dialog

IPC

- Data updated

Panels

- Unified Comfort Panel: articles updated



Product updates

New products and updates for ...

Software

- Step7: Update from V5.6 to V5.7
- WinCCV17: Powerpack article changed

Industrial Communication

- SCALANCE XCM332 (6GK5332-0GA01-2AC2) added
- SCALANCE MUM856-1 (EU) is displayed in net, topology and DC24V view
- SCALANCE MUM853-1 (EU) (6GK5853-2EA00-2DA1) added
- SCALANCE CLP 32GB (6GK1900-0UB40-0AA0) added and selection extended
- Control M12 Plug PRO (6GK1908-0DB10-6AA0) and Control M12 Cable Connector PRO (6GK1908-0DC10-6AA0) added
- IWLAN: SCALANCE WAM763-1 (Access Point), SCALANCE WUM763-1 (Client) and SCALANCE WUM763-1 (Client with DI/DO) added and some optimizations
- SIMATIC PN/MF coupler (6ES7158-3MU10-0XA0) adapted



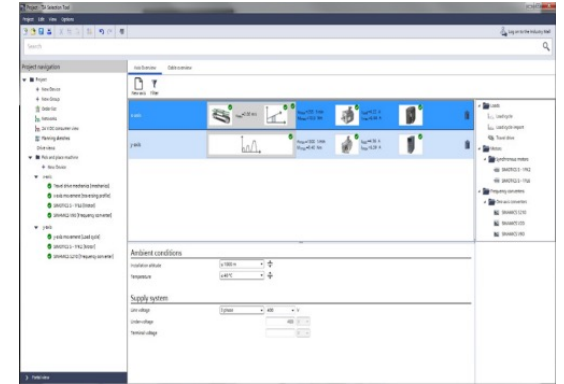
Features of the integrated drive dimensioning

New functionalities and products

- SINAMICS S120 – 24V power supply dimensioning (SITOP only)
 - Added 1FW3, 1FW6 torque motors
 - Added SIMOGEAR world motor
 - Added SIMOGEAR AH 63/71 4 pole IE3
 - Added 1FE1 motors
-
- Lots of other bug fixes and improvements

Not supported

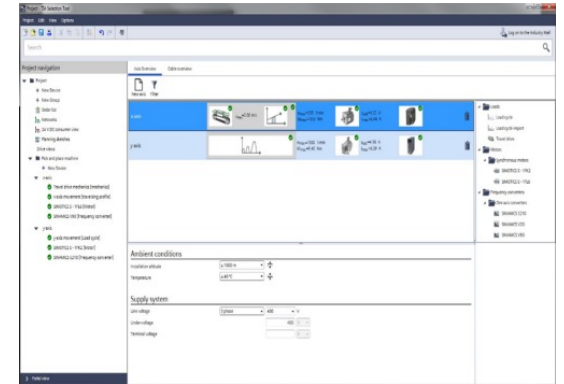
- Help system: There is no special help system provided
- No project import



Features of the integrated drive dimensioning

Known issues

- SINAMICS S120 Drive-CLiQ editor not yet complete. Graphical topology missing.
- SINAMICS S120 printing documentation not yet complete.
- After loading older projects, SINAMICS G115D products are incorrectly displayed as no longer available. Selected inverters must be deleted and reselected manually.
- Assignment of axes to SINUMERIK CPUs is not checked for viability.
- 1FK2 with planetary gears - Filtering and sorting currently not according to the system values.
- 1FK2 motor at S120 AC/AC at 230V supply system, the 2CC cable connection cannot be selected
- When importing devices from other project, only import of full axes will work. Imports of axis subcomponents might damage the project.
- There are situations in which options that have already been configured cannot be retained after changing a selected motor.



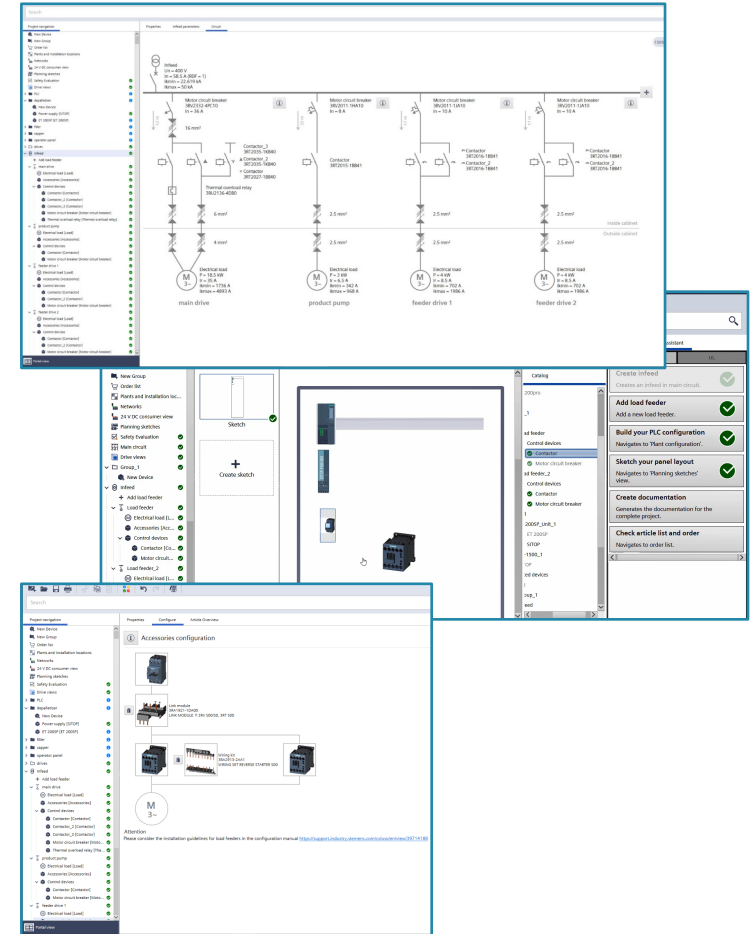
Features of Control Panel Design

New functionalities

- For load feeders with Motor Starters for ET200SP now the cable dimensioning and short circuit calculation is available.
- Motor Starter for ET200SP can now be merged into load groups. For this load group a line protection device can be dimensioned.
- For SITOP power supplies a primary protection device like a motorstarter protector or miniature circuit breaker can be dimensioned. Additionally a cable dimensioning and short circuit calculation will be proceeded for the primary side.
- For load feeders with soft starter it is now possible to select coordination type 2.

ATTENTION:

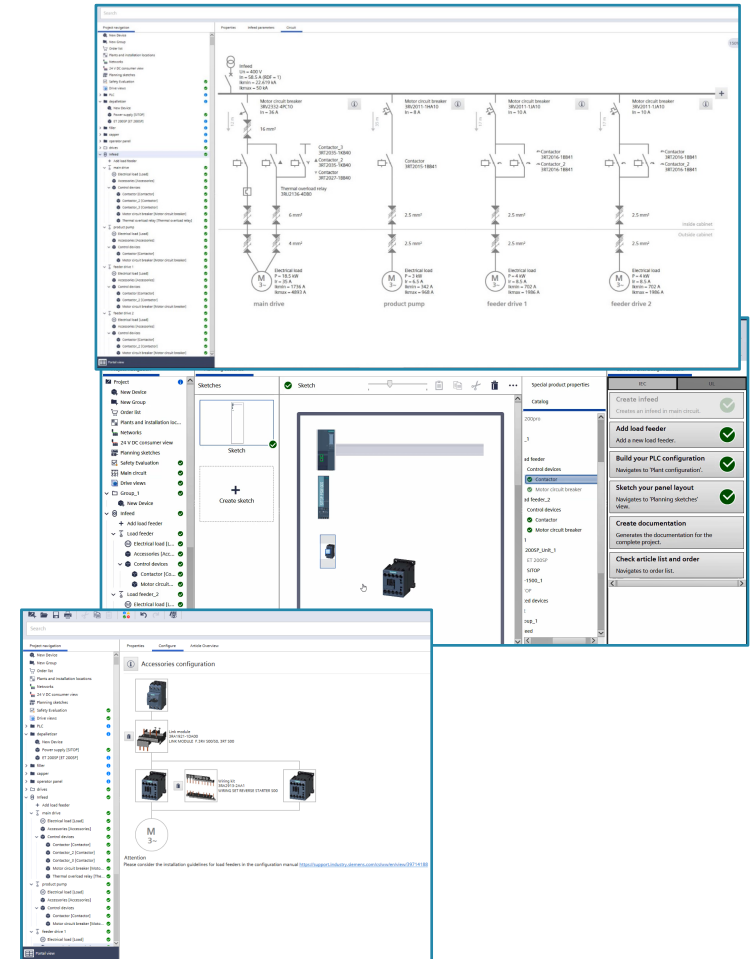
Some features are Beta features and not fully tested. They can contain errors. A hint is shown in the software when you calculate the first device or load feeder combination.



Features of Control Panel Design

Known issues

- For soft starter combinations, which are configured for failsafe functionality with safety level SIL2 or SIL3, only failsafe soft starters should be selected, if filter type of protection is set to “With motor circuit breaker”, because otherwise TIA Selection tool can crash during calculation of the configuration.
- In user defined loads a selection of miniature circuit breaker 5SY is only possible, when the maximum short circuit current of the infeed is not higher than 35kA. Backup protection is not considered.
- With adding load feeders in main circuit view, which belong to an ET 200SP load group, it can happen, that they are not displayed correctly. To fix this problem, please leave the main circuit view and reopen it again.



Disclaimer

© Siemens 2022

Subject to changes and errors. The information given in this document only contains general descriptions and/or performance features which may not always specifically reflect those described, or which may undergo modification in the course of further development of the products. The requested performance features are binding only when they are expressly agreed upon in the concluded contract.

All product designations may be trademarks or other rights of Siemens AG, its affiliated companies or other companies whose use by third parties for their own purposes could violate the rights of the respective owner.