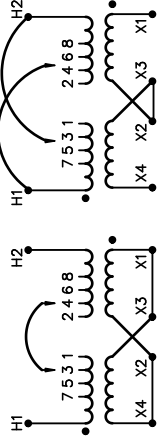



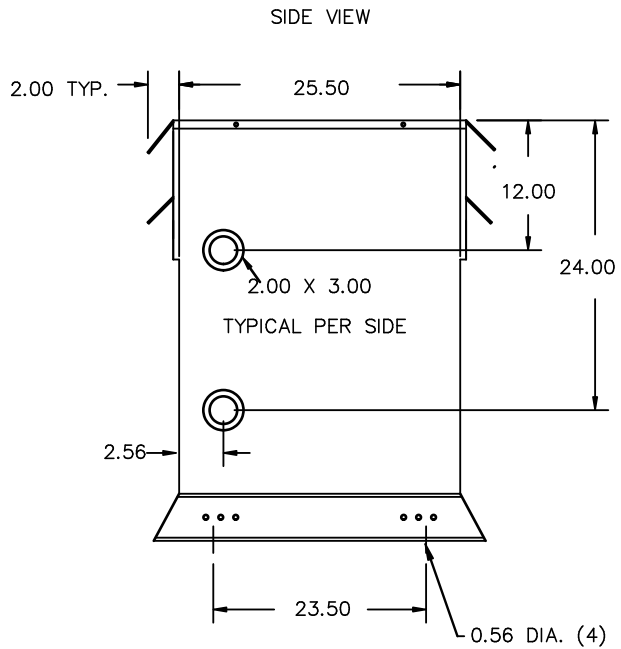
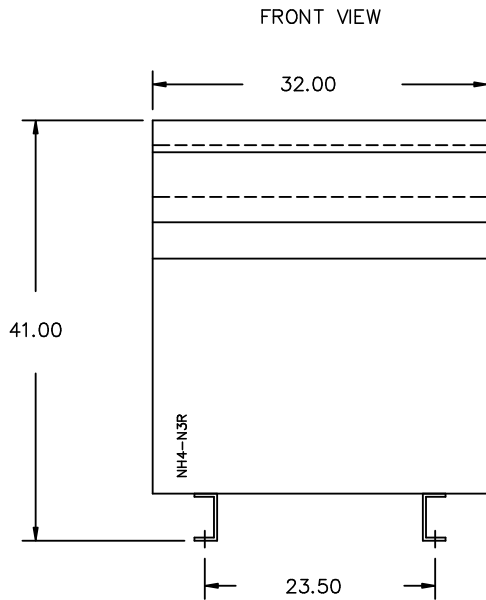
REVISION	DATE	BY	DATE	BY
		DRAWN	06/12/14	JW
		CHEK'D		
		VERIF'D		

Siemens Industry, Inc. Building Technologies Division	
CUSTOMER	
ORDER NO.	DWG. NO.
	1D1Y075FTP1
	SH 1 OF 2

SIEMENS

CATALOG NO. 1D1Y075FTP1 SERIAL NO. 75 kVA 60 Hz 5.8 % IMP AT 135 °C 115 °C RISE °C AVG. AMBIENT 220 °C TEMP CLASS °C MAX. AMBIENT PRIMARY (H1 H2) 240X480 V SECONDARY(X4 X2 X3 X1) 120/240 V WINDING MATERIAL AL ENCLOSURE TYPE NEMA-3R WEIGHT 610 LBS ENERGY EFFICIENCY NEMA TP 1-2002	SERIES H 1 PHASE 	<table border="1" style="width: 100%; border-collapse: collapse;"> <thead> <tr> <th>VOLTS</th> <th>CONNECT</th> </tr> </thead> <tbody> <tr><td>504</td><td>1-2</td></tr> <tr><td>492</td><td>2-3</td></tr> <tr><td>480</td><td>3-4</td></tr> <tr><td>468</td><td>4-5</td></tr> <tr><td>456</td><td>5-6</td></tr> <tr><td>444</td><td>6-7</td></tr> <tr><td>432</td><td>7-8</td></tr> <tr><td>252</td><td>H2-1, H1-2</td></tr> <tr><td>240</td><td>H2-3, H1-4</td></tr> <tr><td>228</td><td>H2-5, H1-6</td></tr> <tr><td>216</td><td>H2-7, H1-8</td></tr> </tbody> </table>	VOLTS	CONNECT	504	1-2	492	2-3	480	3-4	468	4-5	456	5-6	444	6-7	432	7-8	252	H2-1, H1-2	240	H2-3, H1-4	228	H2-5, H1-6	216	H2-7, H1-8
VOLTS	CONNECT																									
504	1-2																									
492	2-3																									
480	3-4																									
468	4-5																									
456	5-6																									
444	6-7																									
432	7-8																									
252	H2-1, H1-2																									
240	H2-3, H1-4																									
228	H2-5, H1-6																									
216	H2-7, H1-8																									
LISTED DISTRIBUTION TRANSFORMER TYPE F  LR 3902 E112313		<table border="1" style="width: 100%; border-collapse: collapse;"> <thead> <tr> <th>VOLTS</th> <th>CONNECT</th> <th>OUTPUT LINE</th> </tr> </thead> <tbody> <tr> <td>120</td> <td>X1-X3, X2-X4</td> <td>X1-X4</td> </tr> <tr> <td>240</td> <td>X2-X3</td> <td>X1-X4</td> </tr> <tr> <td>240/120</td> <td>X2-X3</td> <td>X1-X2-X4</td> </tr> </tbody> </table>	VOLTS	CONNECT	OUTPUT LINE	120	X1-X3, X2-X4	X1-X4	240	X2-X3	X1-X4	240/120	X2-X3	X1-X2-X4												
VOLTS	CONNECT	OUTPUT LINE																								
120	X1-X3, X2-X4	X1-X4																								
240	X2-X3	X1-X4																								
240/120	X2-X3	X1-X2-X4																								
SUITABLE FOR INDOOR OR OUTDOOR LOCATIONS DO NOT INSTALL IN AREAS ACCESSIBLE TO PUBLIC FOR INSTALLATION SEE INSTRUCTION MANUAL NEMA Class ANN Dry Type Transformer Siemens Industry, Inc. Norcross, GA		dsu0082e1																								



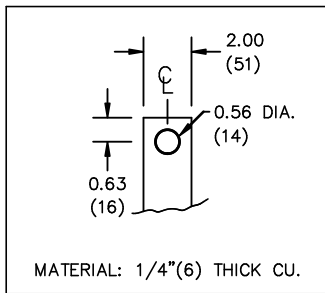
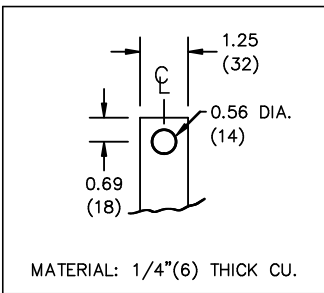


All Dimensions in inches

ENCLOSURE COLOR :ANSI 61 GREY – OUTDOOR

H.V.1. TERMINAL DETAIL

L.V.1. TERMINAL DETAIL



CUSTOMER NOTES:

- HV1 TERMINATED AT TOP REAR
- LV1 TERMINATED AT TOP FRONT

Siemens Industry, Inc.
Building Technologies Division

REVISION	DATE	BY	DATE	BY
		DRAWN	06/12/14	JW
		CHEK'D		
		VERIF'D		

CUSTOMER		
ORDER NO.	DWG. NO.	
	1D1Y075FTP1	SH 2 OF 2

0.0 jwen 2010/01/21 13:28