

SIEMENS

Ingenuity for life

M2M controller for SMT Line

SEMI standard communication interface

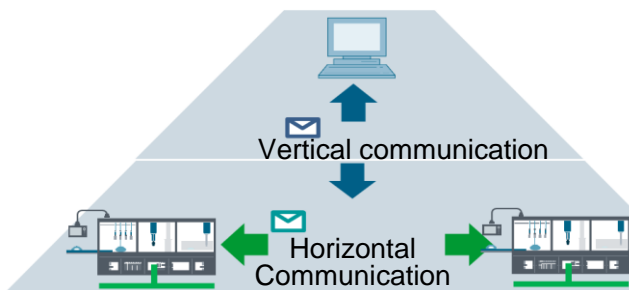
www.siemens.com/en/s7-1200/semi-a1

Siemens to release SEMI Standard Interface M2M controller for SMT line



What is new SEMI standard* interface?

- Send product data and product together
- Connect multi-vendor machines



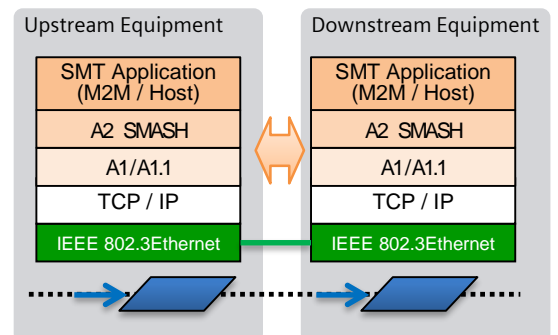
Data flow

Message layer

Network layer

Physical layer

Panel flow



*SEMI SMT-ELS <http://www1.semi.org/jp/Standards/SmartManufacturing/FlowShopLine/SMT>

Why need new communication standards in SMT line?

Current Issues

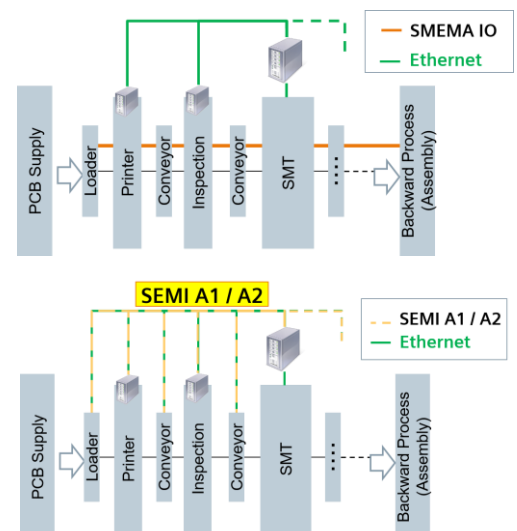
- Data and material separately ... IO signals(SMEMA)
- Many communication protocol ... Special protocols

Solutions

- Throw data and material together in between machines
- Easily communicate with multi vendors

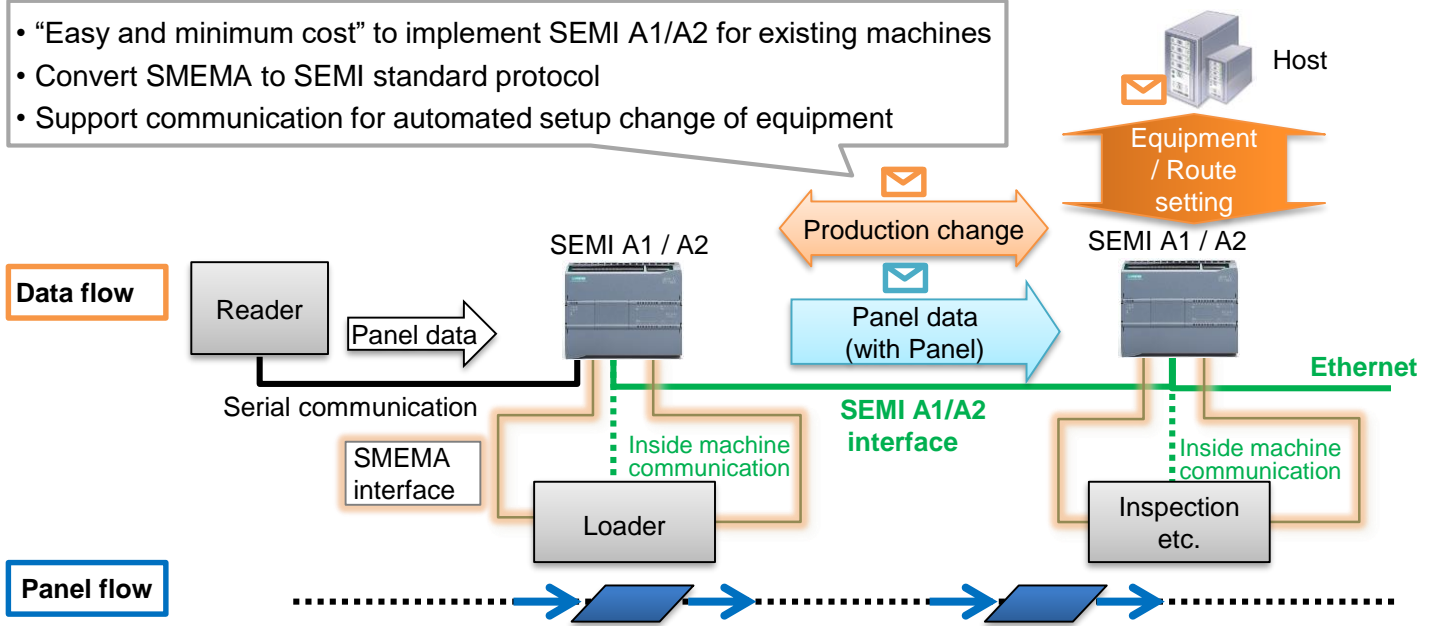


Unify communication protocol between machines
But difficult to implement all machines in the line



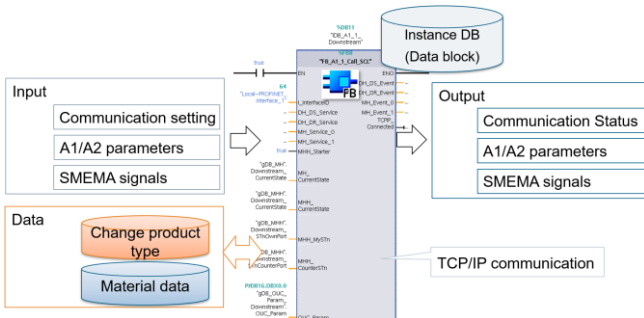
How to implement SEMI A1 / A2 interface?

- “Easy and minimum cost” to implement SEMI A1/A2 for existing machines
- Convert SMEMA to SEMI standard protocol
- Support communication for automated setup change of equipment

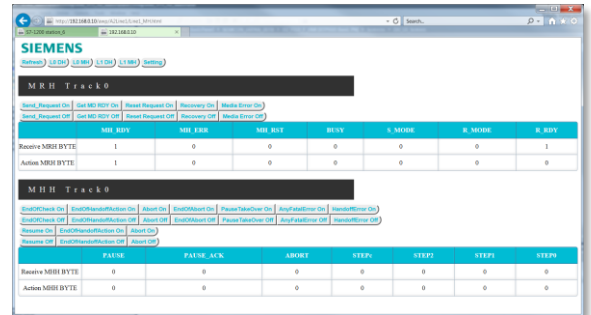


What advantage to use Siemens products ?

- SEMI A1 / A2 interface libraries free of charge
- Support a communication interface of automated product change with TCP/IP or RS485(232C)
- Easy parameter set and commissioning without engineering tool using web server
- No.1 PLC global market share and many users in the world, Global service over 200 countries



SEMI A1 / A2 interface free of charge



Parameter set by web server

What products should be prepared?

Category	Product name	Order number	List price
SIMATIC S7-1200	CPU1215C AC/DC/RLY	6ES7215-1BG40-0XB0	¥80,700
TIA Portal	STEP 7 Basic V15.1 Floating license	6ES7822-0AA05-0YA5	¥47,800

Programming Editing project

➤ **M2M controller for SMT line with SEMI standard interface**

www.siemens.com/en/s7-1200/semi-a1

Aug. 2019

* SEMI A1 / A2 application is only supported by Siemens Group in Japan.

Contact Siemens Group in Japan

www.siemens.com/jp/ad

Siemens AG Industry Online Support

<https://support.industry.siemens.com>



www.siemens.com/en/s7-1200/semi-a1