


## Installation Instructions

	<b>! DANGER</b>
	<b>Hazardous Voltage. Will cause severe injury or death.</b>  Turn off and lock out all power supplying the panelboard before installing.

 <b>SAFETY INSTRUCTIONS</b>
--


**NOTE:** These instructions outline the recommended installation procedure. The term, circuit breaker, used in these instructions also includes motor circuit interrupters and molded case switches.

### GENERAL

These connector straps are for use by panelboard builders to provide an electrical interface between circuit breakers and panelboard power bus. They can be used in selected combinations to connect line or load terminals of 2 or 3 pole circuit breakers. The instructions provide illustrations and dimensional information to show positioning of the circuit breakers relative to the panelboard bus bars. Fasteners are not supplied and must be provided by the installer.

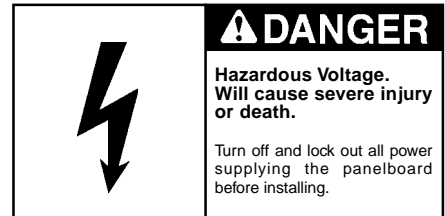
### PREPARATION

Figures 1 through 3 show circuit breaker and connector strap interface dimensions that are relevant to the panelboard installation.

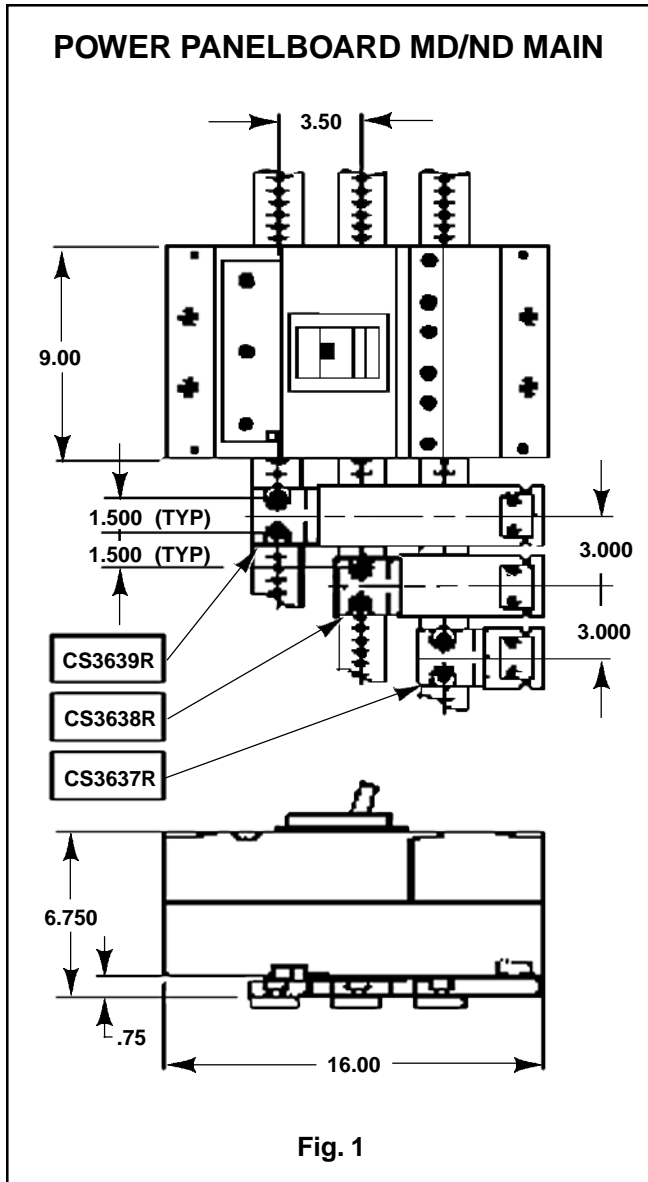
<b>! WARNING</b>

The panelboard connector straps used alone, do not provide adequate circuit breaker support. Severe injury or death could result if the breaker is not properly secured.  The panelboard must provide mounting and securement of the circuit breaker.

### INSTALLATION

1. Turn off and lock out all power supplying the panelboard before installing.
2. Construct a connector strap positioning template, fabricated from rigid material, dimensioned with the hole pattern shown on line A in Figure 3.
3. Attach the connector straps to the template with two 5/16-18 bolts per strap.

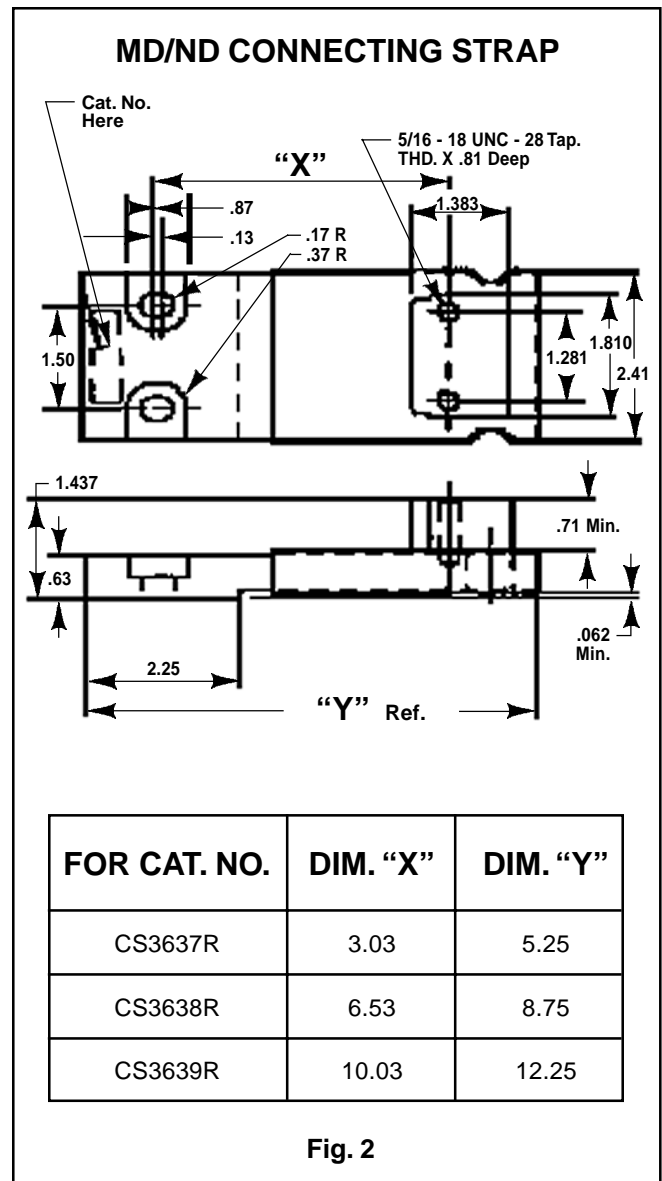


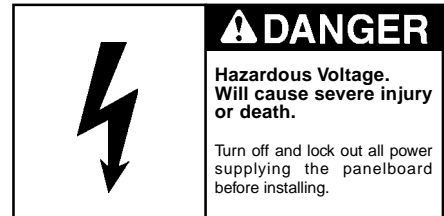
# Installation Instructions



4. Position the template and the connector strap assembly in the desired panelboard location. Secure the straps to the bus with connector strap to the bus with connector strap mounting fasteners following the panelboard specifications.

5. Remove the template from the connector straps.
6. Mount the circuit breaker in the panelboard following the panelboard specifications and the circuit breaker installation instructions.





# Installation Instructions

- 7. Attach the circuit breaker to the connector straps with circuit breaker terminal fasteners in accordance with panelboard specifications.
- 8. Panel trim should be installed per panelboard specifications. Make certain that electrical clearance are maintained and that all dead front openings are closed around the circuit breaker.

