

## QUICK SELECTION GUIDE

# SENTRON software

Software solutions for greater energy efficiency and optimized operation

[siemens.com/sentron-powercenter3000](https://www.siemens.com/sentron-powercenter3000)

[siemens.com/sentron-powermanager](https://www.siemens.com/sentron-powermanager)

With SENTRON, we're offering our customers software solutions tailored to their exact requirements, for efficient, reliable, and sustainable low-voltage power distribution.

The portfolio for energy monitoring and condition monitoring:

- SENTRON Powercenter 3000 – the plug & operate solution for an easy entry
- SENTRON Powermanager – the comprehensive energy management system (EMS) with advanced functions

Publisher  
Siemens AG

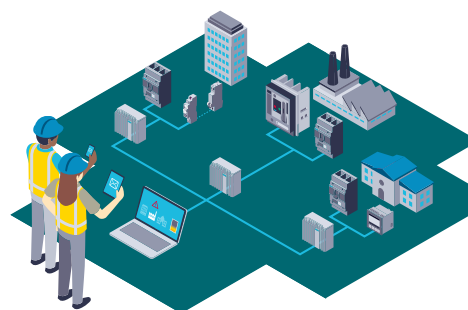
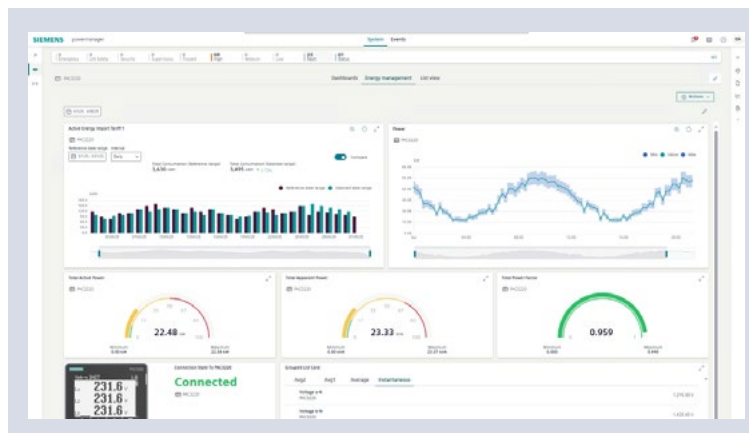
Smart Infrastructure  
Electrical Products  
Siemensstraße 10  
93055 Regensburg  
Germany

For the U.S. published by  
Siemens Industry Inc.  
3617 Parkway Lane  
Peachtree Corners, GA 30092  
United States

Article No. SIEP-B10512-00-7600  
DY 250157\_B DB 0825

Subject to changes and errors. The information given in this document only contains general descriptions and/or performance features which may not always specifically reflect those described, or which may undergo modification in the course of further development of the products. The requested performance features are binding only when they are expressly agreed upon in the concluded contract.

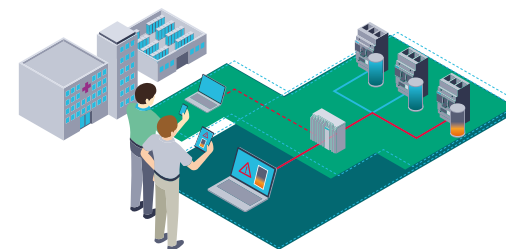
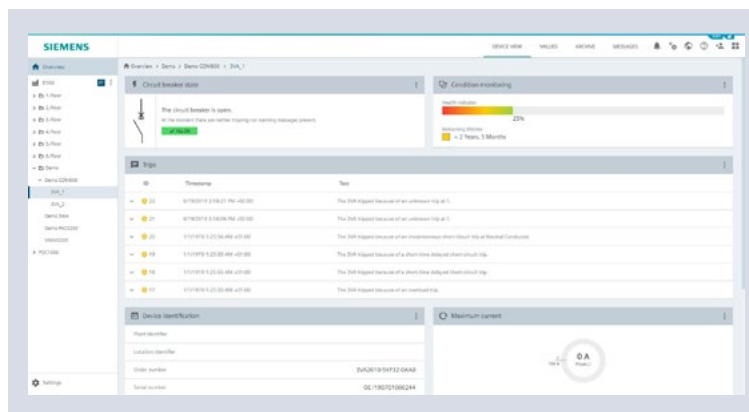
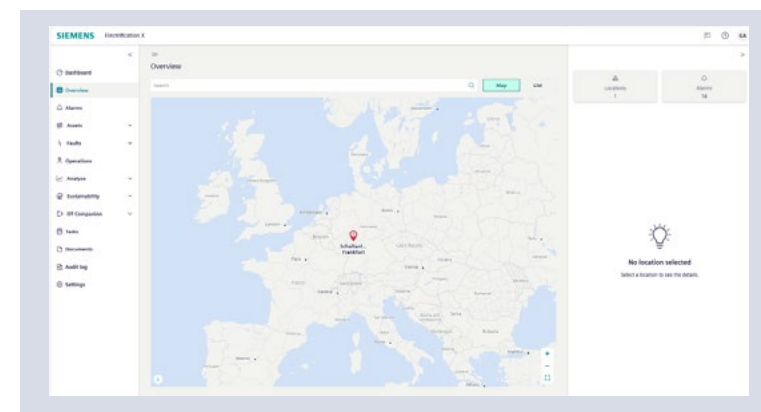
© Siemens 2025



Energy monitoring of individual sites or **multiple distributed properties**: optional cloud connection to cloud-based solutions from Siemens or third-party providers.



Ready for **energy management** according to ISO 50001 and ISO 50003: Transparency in energy consumption, benchmarking with KPIs, and load profile analysis for optimized energy efficiency.



Efficient facility management of **critical infrastructures** to reduce downtimes: condition monitoring of devices for predictive maintenance.

## SENTRON software: Quick Selection Guide



Attributes	SENTRON Powercenter 3000	SENTRON Powermanager
<b>Platform</b>	IPC	PC (Windows)
Data export	x	x
<b>Reporting</b>	Basic reporting	Advanced reporting
<b>Real-time and historic data</b>		
Real-time data – graphical	–	x (measuring element + line chart)
Historical data	x	x
<b>Dashboards</b>		
Predefined dashboards for devices	x	x
Customizable dashboards	x	x
<b>Communication</b>		
Northbound interface	MQTT (third-party cloud)	OPC UA/DA
Southbound interface	Modbus TCP	Modbus TCP, OPC UA/DA, IEC 61850, BACnet
Third-party device support	x	x
Recording of different energy types	x	x
Limit value / threshold value	x	x
Alarms and notifications	x	x
Graphic editor	–	x
Monitoring of power quality (real-time data of the devices)	x	x
Power quality (EN 50160 dashboard and reporting)	–	x
Condition monitoring	x (individual views)	x (individual & aggregated views)
Software update	Manual	Manual
Purchase	Device purchase + optional licenses	License purchase
Number of subordinate devices	Max. 212	Max. 700 per server

x = supported  
– = not supported