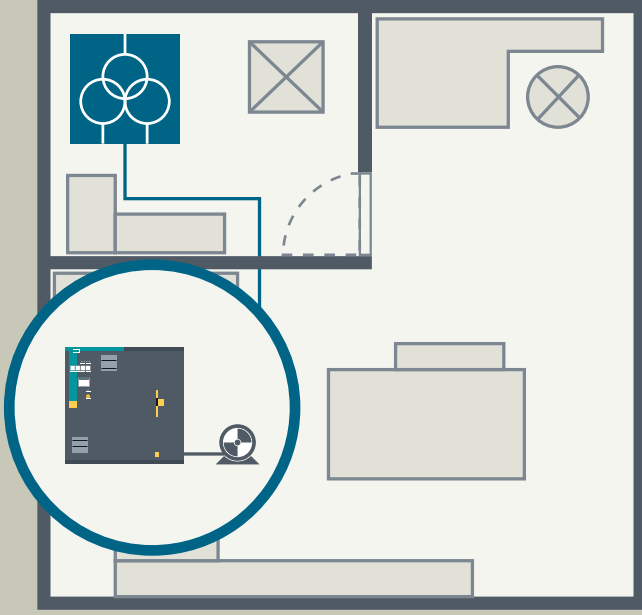


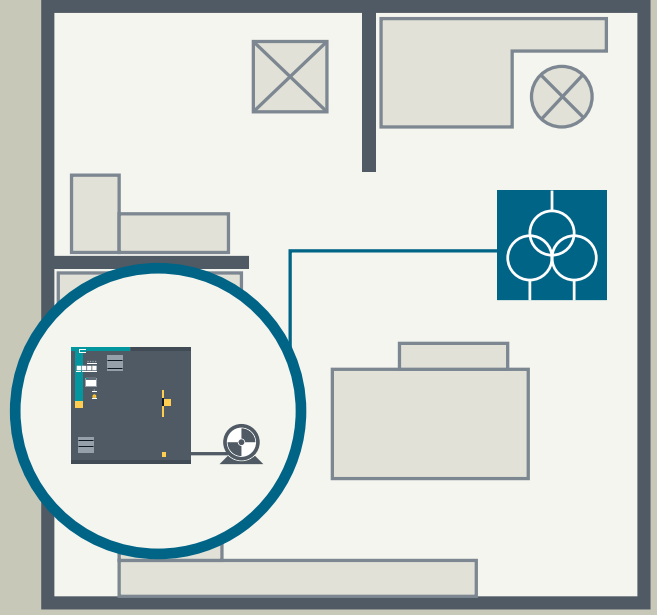
# SINAMICS PERFECT HARMONY GH150

## Separate transformer

Separate transformers allow a flexible plant layout ...

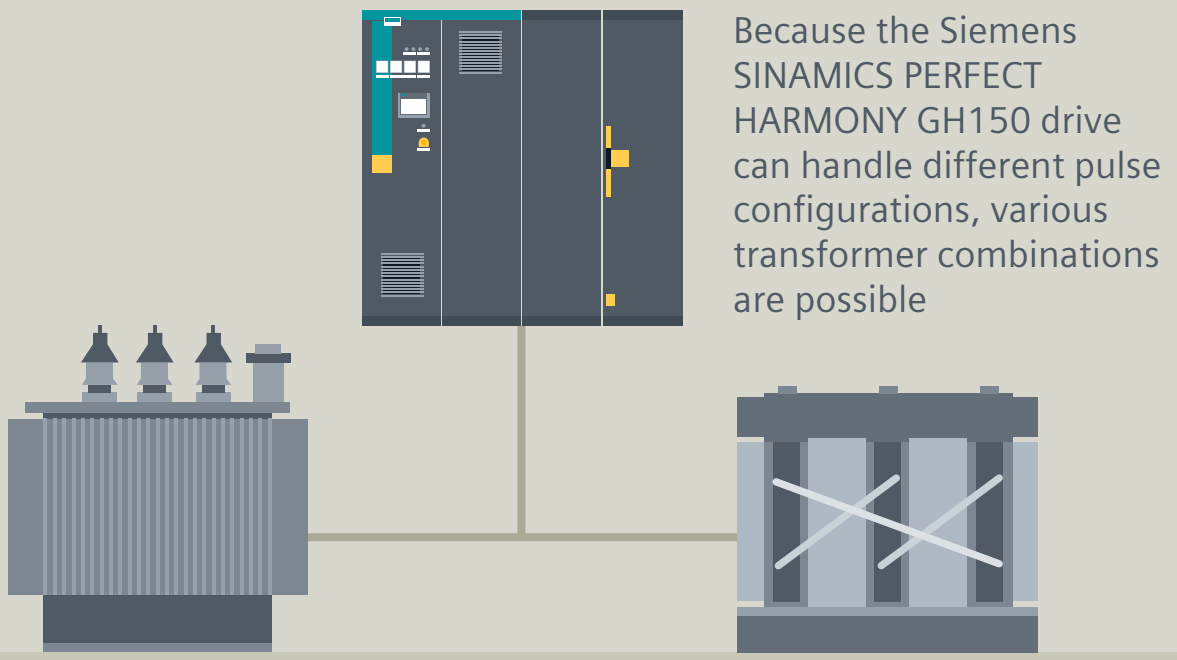


Placement in a separate room for added safety



Flexible placement for perfect plant utilization and space saving

### ... free transformer selection



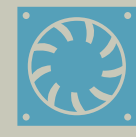
Because the Siemens SINAMICS PERFECT HARMONY GH150 drive can handle different pulse configurations, various transformer combinations are possible

Liquid filled transformer

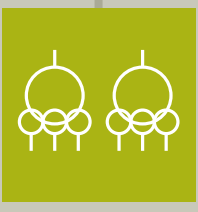
Dry type transformer



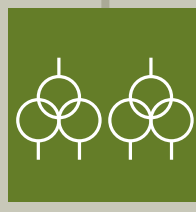
Oil-cooled



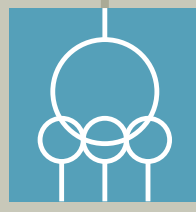
Air-cooled



36 pulse



24 pulse



18 pulse



12 pulse

### Harmonics

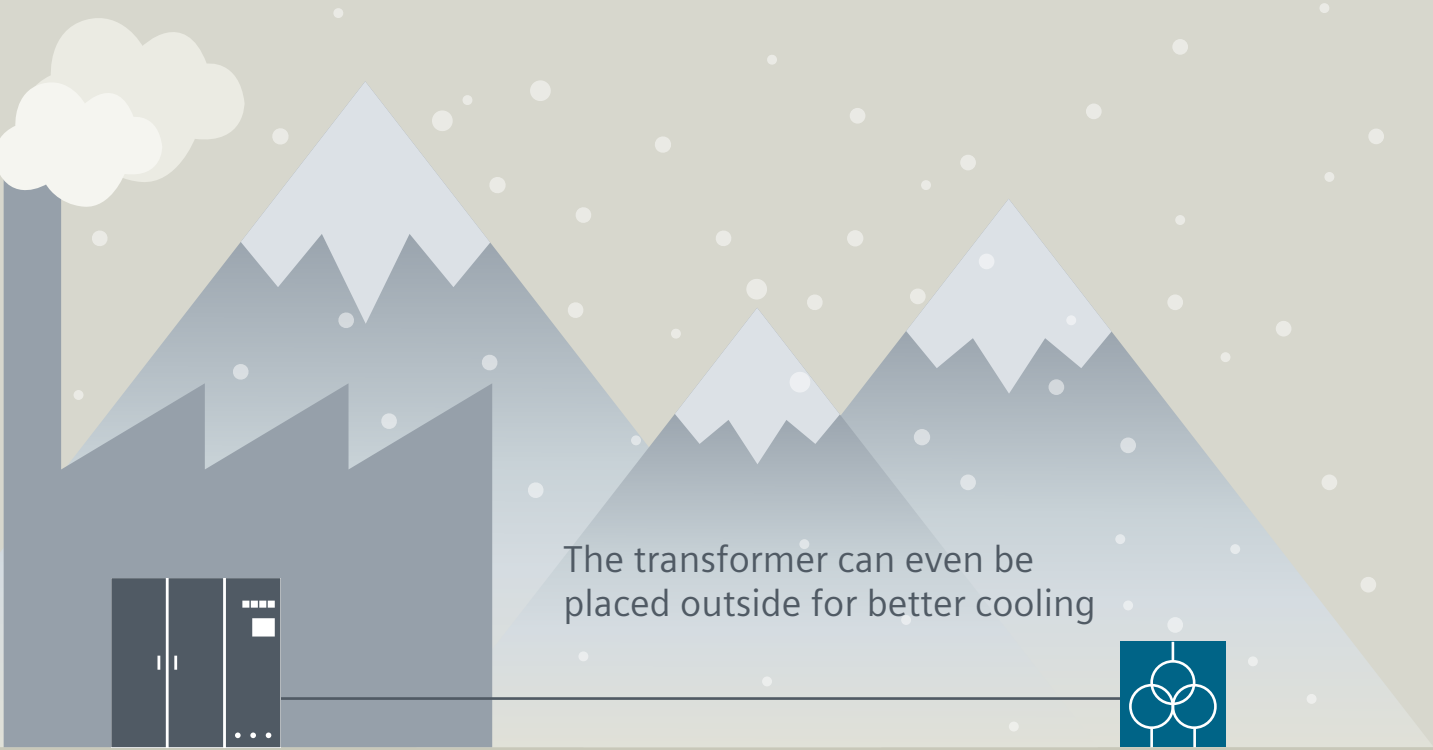


### Size of transformer



### ... and transformer placement

Various cooling options ensure an optimal adaption to the local conditions



Siemens SINAMICS PERFECT HARMONY drives ensure 99 percent availability and boost productivity with proven technology

- High availability
- Increased productivity
- Greater reliability
- Plant flexibility
- Cost efficiency