

CATALOG NO. MS17TB

TYPE 3R ENCLOSURE (RAINPROOF) TOP OR BOTTOM FEED.

DEVICE RATING: 100 AMPS MAXIMUM, 600 VAC MAXIMUM, THREE PHASE, FOUR WIRE FOR USE ON 208Y/120, 240/120 DELTA\*, 480/277, OR 480/240 DELTA\* VAC SYSTEMS. METER SOCKET RATING: 100 AMPS CONTINUOUS. CONNECT DELTA HIGH PHASE TO THE RIGHT HAND TEST BLOCK.

THIS DEVICE HAS A MAXIMUM SHORT CIRCUIT CURRENT RATING OF 10,000 RMS SYMMETRICAL AMPERES AT 600 VAC MAXIMUM. (WATTHOUR METER NOT INCLUDED IN THE SHORT CIRCUIT CURRENT RATING). THE ACTUAL RATING IS DEPENDENT ON THE MAIN BREAKER OR FUSE INSTALLED AHEAD OF THIS DEVICE IN ACCORDANCE WITH THE TABULATION BELOW.

MAX short circuit current rating in RMS symmetrical Amperes	MAX VAC	When protected by a remote *Breaker or *Fuse Device
200,000	600	Class J or T Fuse
100,000	600	Class RK5 Fuse
50,000	300	Class T Fuse (300V)
42,000	480	Class RK1 Fuse
65,000	240	Murray Type MP-MT or Siemens Type HQP Breaker
42,000	240	Murray Type MP-MT or Siemens Type HQP Breaker
22,000	240	Murray Types MP-HT or Siemens Type QPH
10,000	240	Any Murray or Siemens Breaker or Fuse

\*FUSE or \*BREAKER RATING MUST BE GREATER THAN OR EQUAL TO THE DEVICE SHORT CIRCUIT CURRENT RATING.

TERMINAL RANGES - AWG AND TORQUE (LB-IN)

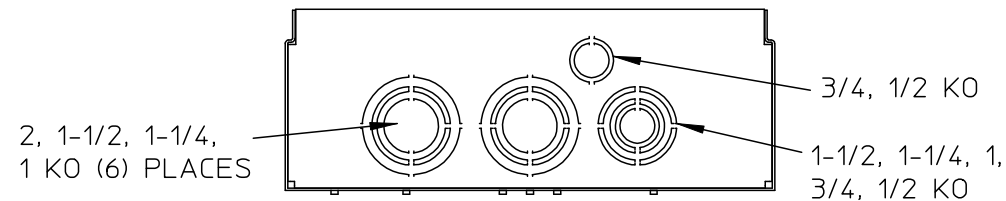
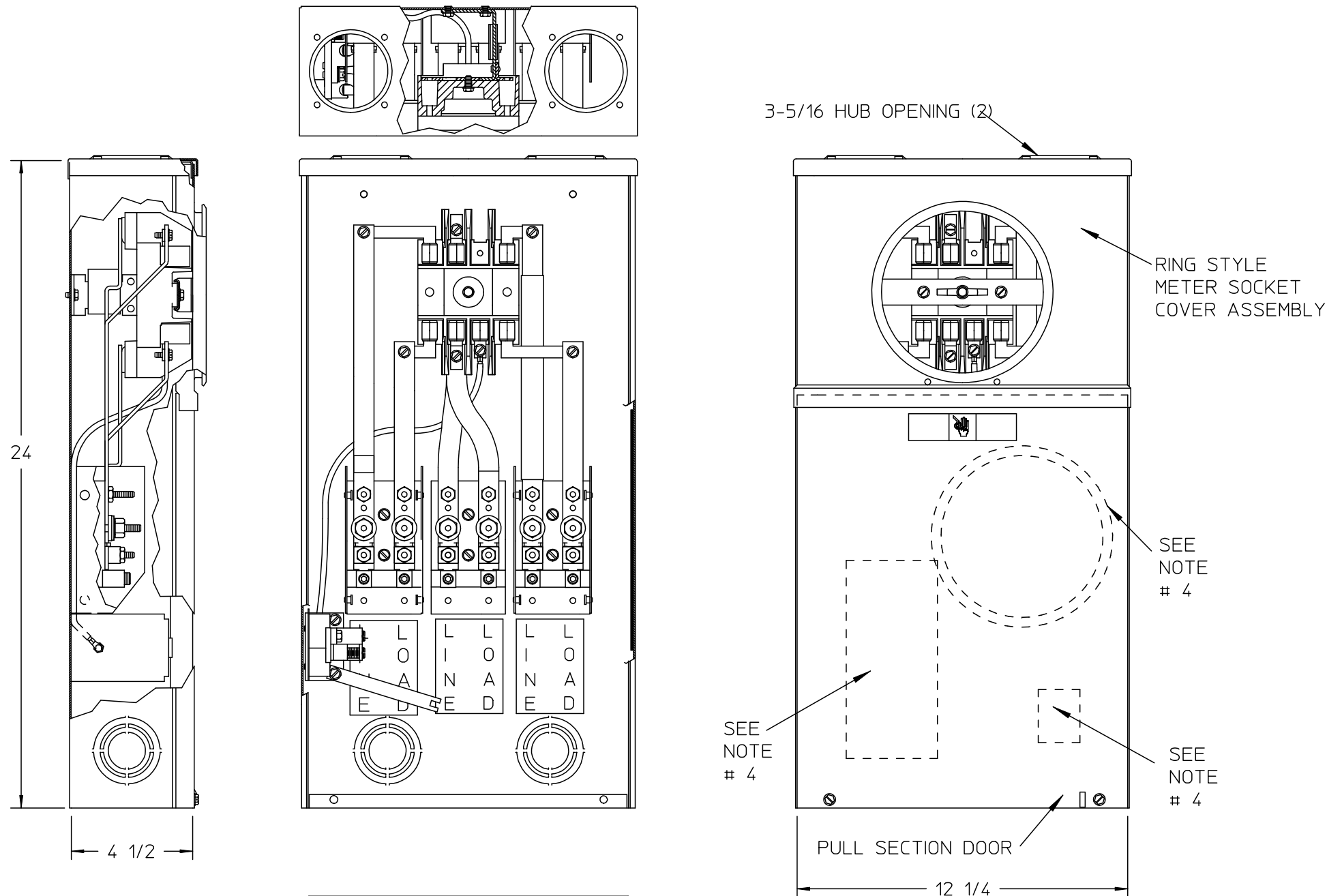
TEST BLOCK LINE & LOAD: #2/0-6 (110).  
 NEUTRAL #1/0-14; #1/0-3 (50), #4-6 (45), #8 (40), #10-14 (35).  
 TEST BLOCK CIRCUIT CLOSING (DISCONNECT) NUT (5/8" ACROSS FLATS); TORQUE 50 LB-IN.

TERMINALS SUITABLE FOR USE WITH 60/75° C, AL/CU INSULATED WIRE.

FOR EQUIPMENT GROUND BAR ORDER ECLX SERIES. IF HUB IS REQUIRED SELECT FROM LIST BELOW.

RX TYPE HUBS

SIZE	CAT. NO
1 1/4"	EC38597
1 1/2"	EC38598
2"	EC38599
2 1/2"	EC38600



NOTES:

1. FINISH: GRAY
2. CABINET: 16 GA GALV STEEL.
3. 100 AMP, 600 VAC, 3PHASE, 4 WIRE
4. SEALING RING, HUB COVER PLATE ASSEMBLY, AND NEMA INSTRUCTION SHEET PLACED IN INSIDE OF BOX BEFORE PULL-SECTION COVER IS SECURED.
5. UL LISTED - E30413
6. EUSERC DRAWING NUMBER 304.

© 2015 Copyright Siemens Industry, Inc.

**TALON**

**RAINPROOF COMBINATION METERING**

Description:

**SKT 100A 7T (2)HO EUSERC**

CJD 11-07-16 DO NOT SCALE DRAWING Dwg No: MS17TB