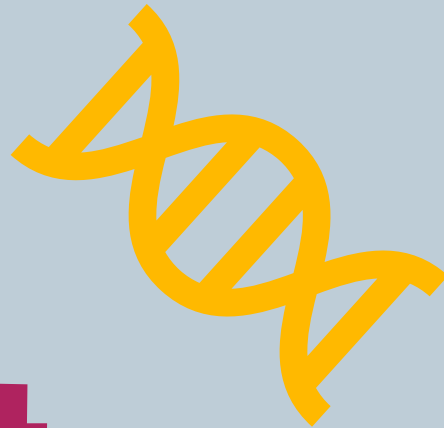
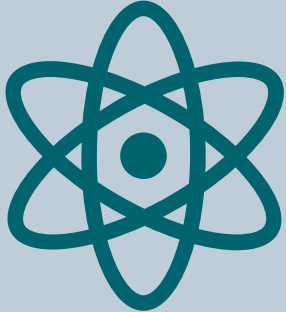


SIEMENS

Ingenuity for life



Science Quiz

Answer Book

[siemens.co.uk/education](https://www.siemens.co.uk/education)



Did you know?

The gravitational pull on Mars is only 38% of the gravitational pull on Earth.

That means if you weigh 70kg on Earth you would weigh only 27kg on Mars!

Question 1

What is the name of the force that pulls objects towards the centre of the earth?

Gravity

Question 2

Which planet is nicknamed "The Red Planet"?

Mars

Question 3

Which animal appears first in the dictionary?

Aardvark

Question 4

How many bones does the average human have?

206

Question 5

What is the chemical formula for carbon dioxide?

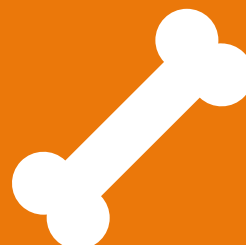
CO₂

Question 6

Unscramble 'nogeix' to spell an element in the periodic table.

Oxygen

At birth the human body is made up of 270 bones. The number of bones in a human skeleton decreases to 206 by adulthood after some bones are fused together.



Did you know?

Diamond and graphite are different forms of the same thing – carbon!



The carbon atoms in diamond and graphite are arranged in different patterns giving each form of carbon a different set of properties!

Question 7

What temperature does water boil at?

100°C

Question 8

What is the hardest known natural material?

Diamond

Question 9

Which substance is most used for pencil lead?

Graphite

Question 10

Who was the first person to walk on the moon?

Neil Armstrong

Question 11

Name all 6 basic animal groups.

- **Mammals**
- **Fish**
- **Birds**
- **Reptiles**
- **Amphibians**
- **Invertebrates**

Neil Armstrong was an astronaut and engineer. On the 20th July 1969 Neil Armstrong became the first person to walk on the Moon.



Photosynthesis is the process where energy from the sun changes carbon dioxide and water into glucose and oxygen inside a plant.



Question 12

What is the name of the chemical reaction that takes place inside a plant, producing food for it to survive?

Photosynthesis

Question 13

What is the only bird that can hover in the air and can also fly backwards?

Hummingbird

Question 14

What is the name of the process when a gas changes to a liquid?

Condensation

Question 15

A material which allows electrical current to pass through it is called what?

Electrical conductor



Did you know?

Electricity can travel almost as fast as the speed of light. That's about 300,000 km per second!

How did you score?

Stay curious about science
and explore STEM at home
with these awesome
DIY Science videos.
Scan the QR code to watch!



[siemens.co.uk/education](https://www.siemens.co.uk/education)