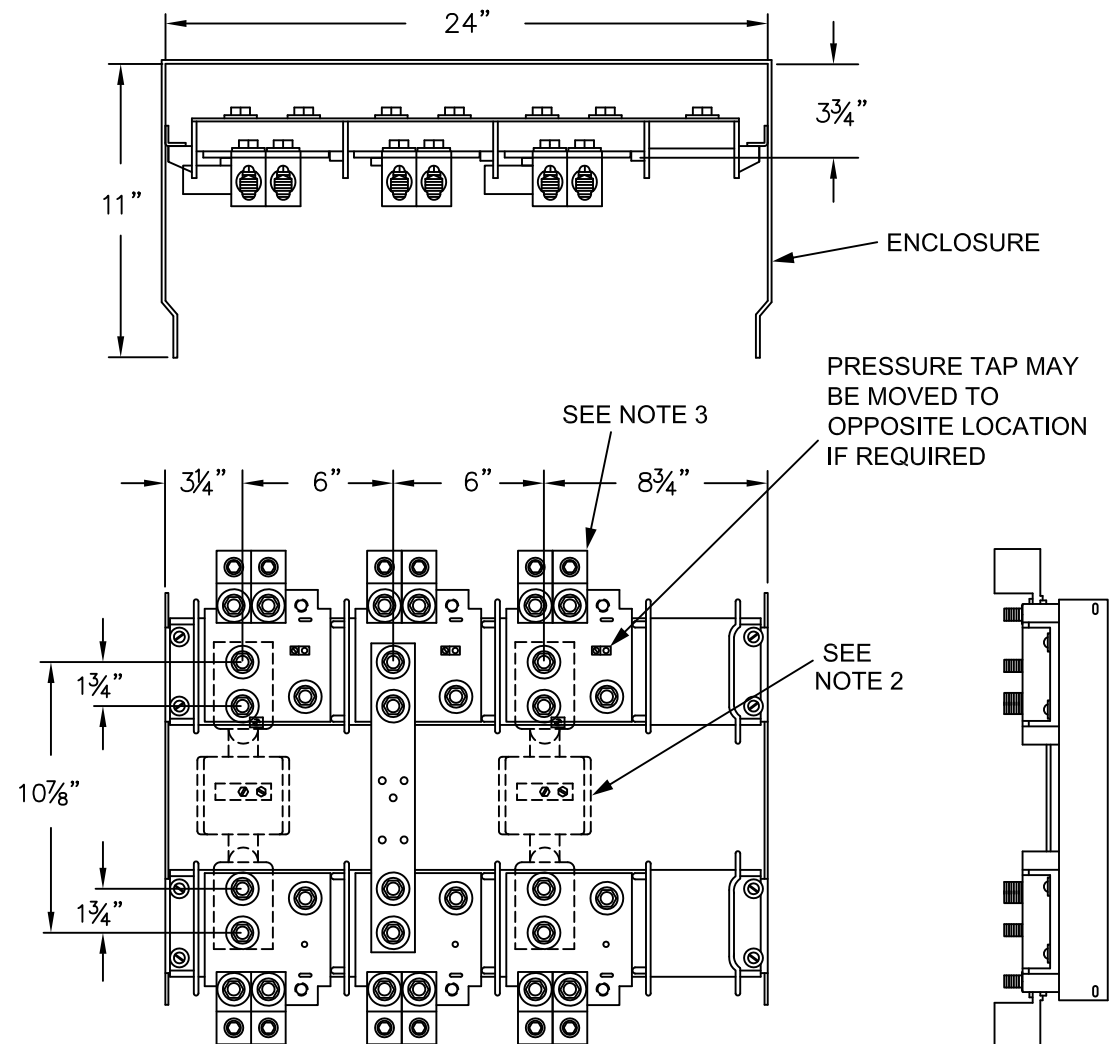


Catalog Number: T482411CT338MR

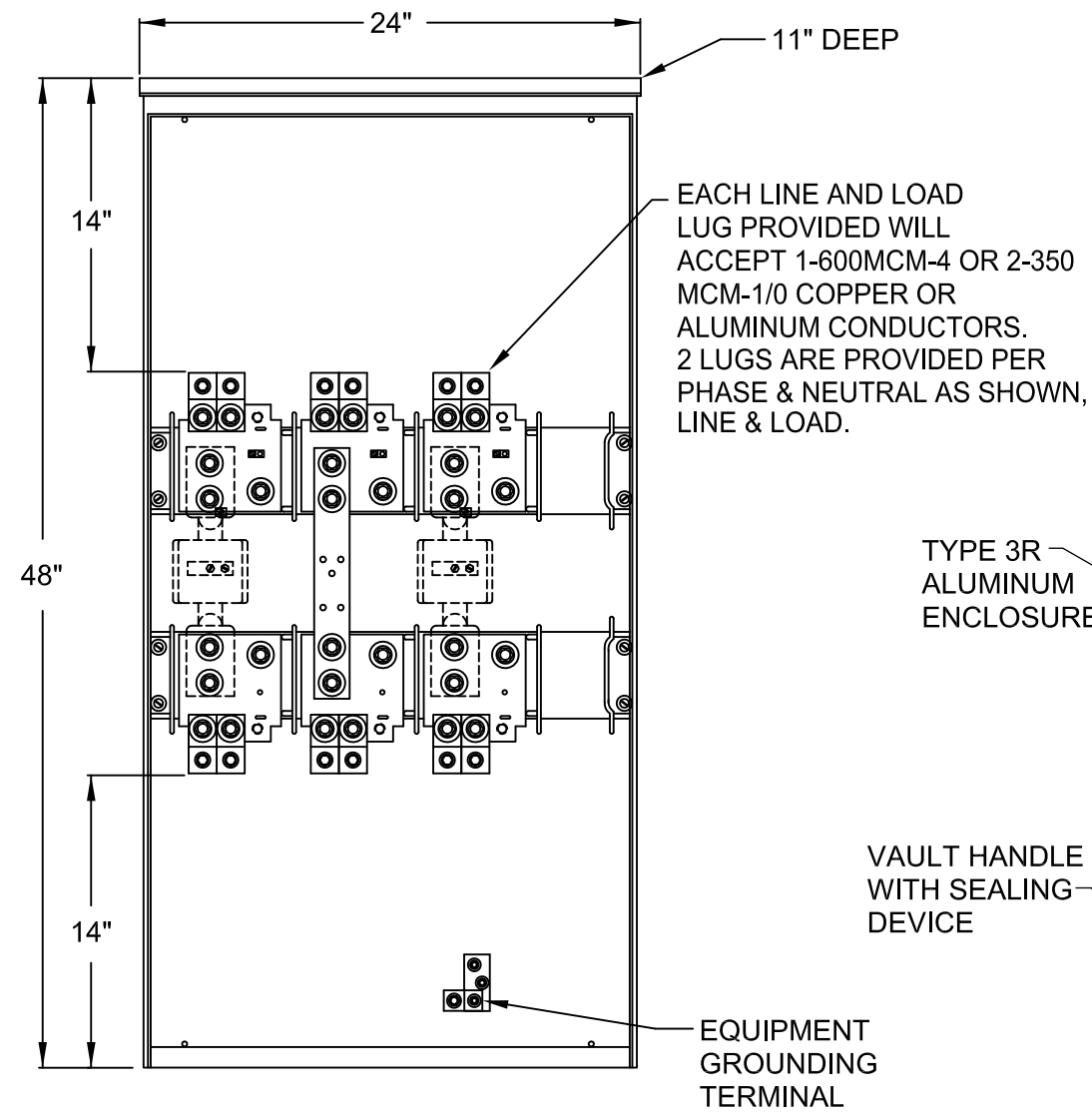
Amps	Volts Max.	Phase/Wires	Unprotected Fault Current Rating	Enclosure Size		
				Width	Height	Depth
600/800	250V	3 Phase, 3 Wire	65,000	24"	48"	11"



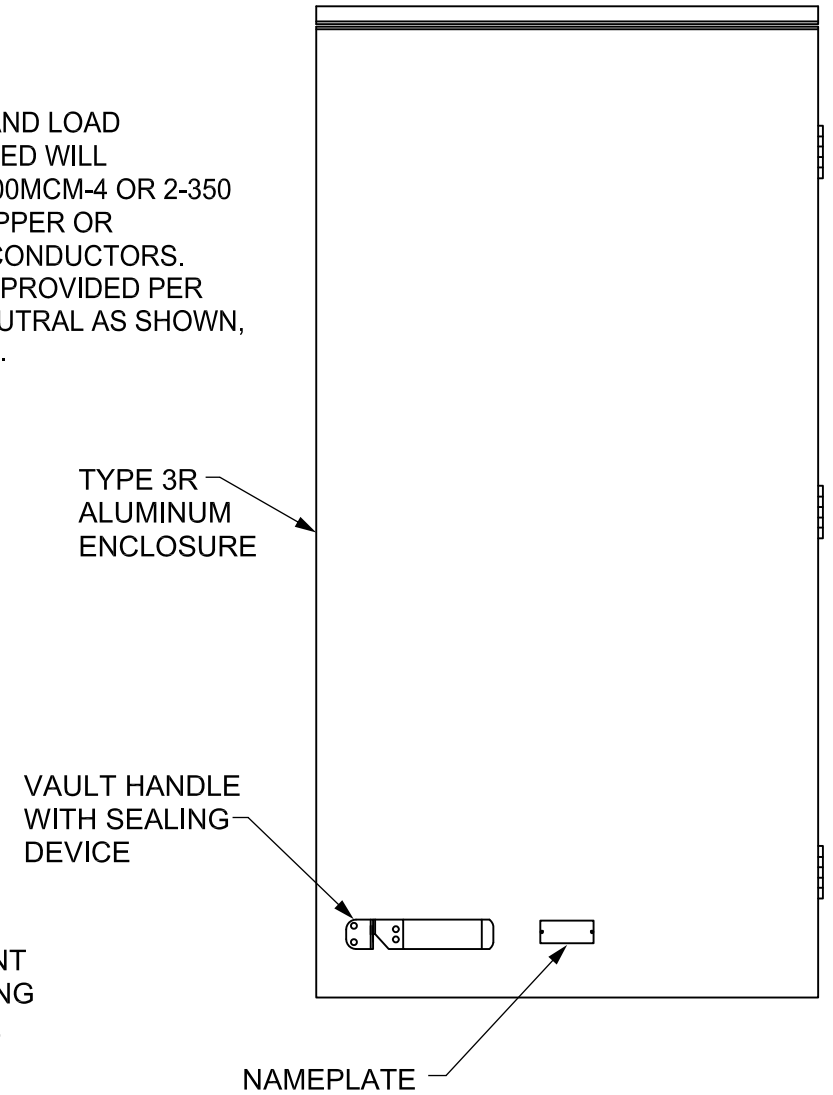
**INTERIOR DETAIL**



**FRONT INTERIOR VIEW**



**FRONT ENCLOSED VIEW**



**GENERAL NOTES:**

1. C/T AND LUG LANDING PADS AND NEUTRAL ARE RATED 800 AMPS.
2. CURRENT TRANSFORMERS ARE PROVIDED BY THE UTILITY CO.
3. EACH LINE AND LOAD LUG PROVIDED WILL ACCEPT 1-600MCM-#4 OR 2-350MCM-1/0 COPPER OR ALUMINUM CONDUCTORS. 2 LUGS ARE PROVIDED PER PHASE AS SHOWN, LINE & LOAD. 1 ADDITIONAL LUG CAN BE ADDED WITHOUT MODIFICATION.

**TALON**  
**Metering**

Description: **600/800A, 250V AC Max, 3Ph 3Wire, Outdoor Current Transformer Cabinet**