



| RailXplore Foresight



The powerful Decision Support Tool that maximizes the diagnosis and monitoring of assets for optimized operations and maintenance.

RailXplore Foresight

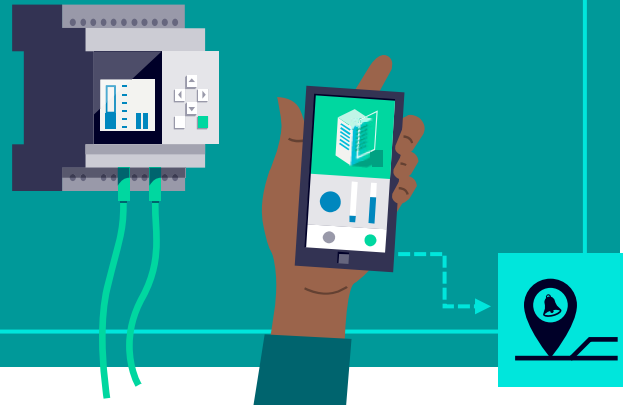
Product Description

RailXplore Foresight is a Decision Support Tool (DST) that helps infrastructure managers to tackle everyday operational and maintenance challenges. The solution provides diagnostics and

monitoring of railway signaling products and systems status to support customer maintenance staff in making optimal decisions and reduce the mean-time-to-repair.

RailXplore Foresight application

- ✓ Real-time monitoring
- ✓ User-friendly interface
- ✓ Web browser or mobile app
- ✓ Solution independent of trackside technology
- ✓ Machine learning technology



RailXplore Foresight ensures a secure connection to the railway asset with Siemens standard connectivity solutions:

 Common Technician's Facility (CTF)

- Collection of data from field signaling devices and systems

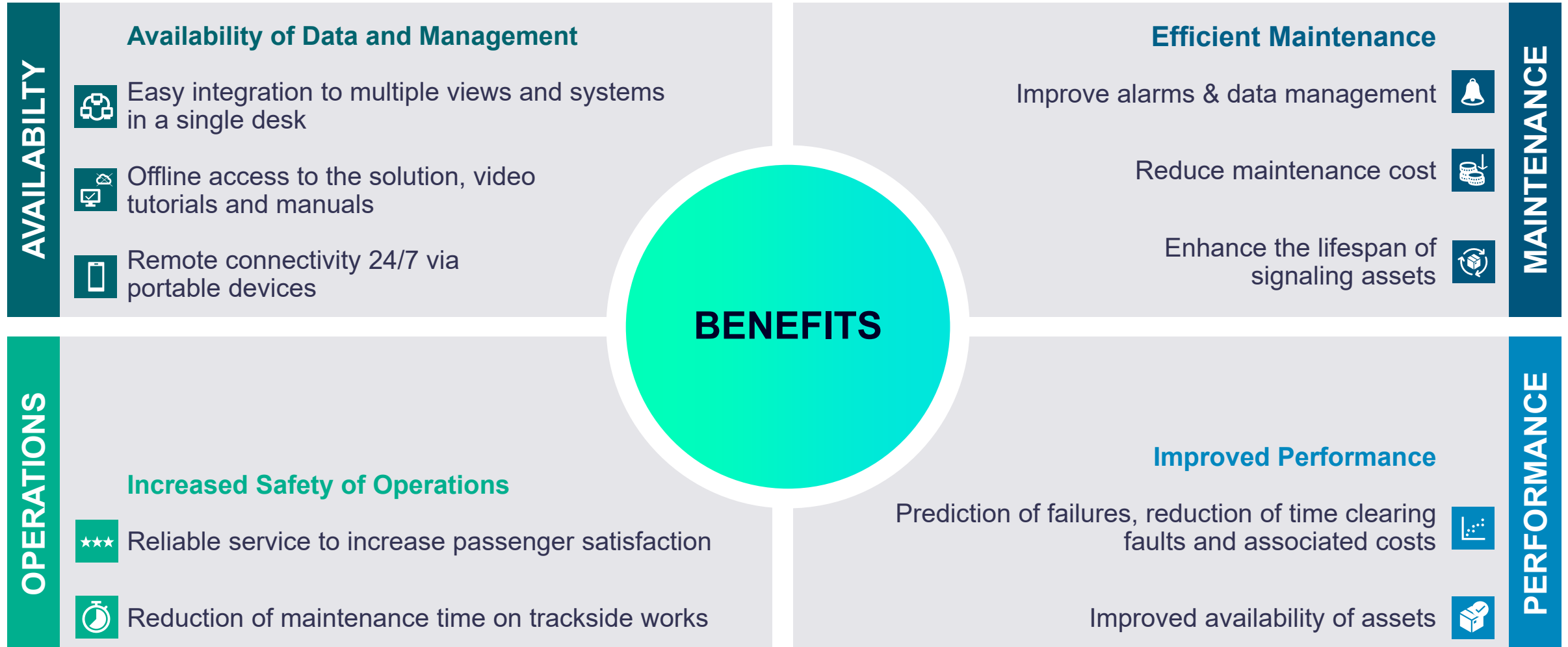
 CoreShield Connect

- Siemens edge platform
- Collection and standardization of data
- Enabler for IoT connectivity

 Cloud environment

- Siemens IoT cloud platform
- Data processing by using AI
- App environment builder

Benefits of RailXplore Foresight



Key Functionalities

Overview Display

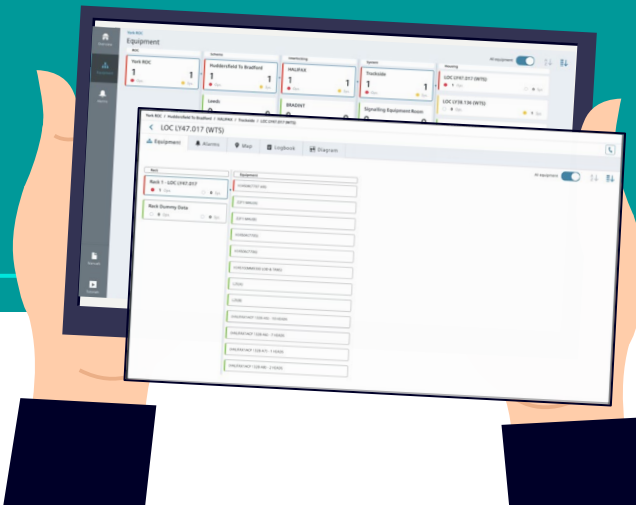
- Single desk for the integration of multiple schemes and systems
- Easy access to information and diagnostic data
- Storage of data assets in a single platform
- Access to the most recent uploaded information

Equipment Management

- Optimization of the lifespan of signaling assets
- Real-time view of the status of trackside equipment
- National coverage, allowing the integration of multiple schemes in a single workstation

User Access

- Single Sign On (SSO)
- Web browser and mobile app
- Integrated with GPS mobile navigation app
- Modern user experience



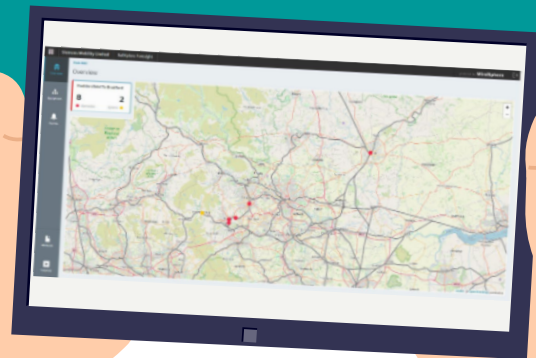
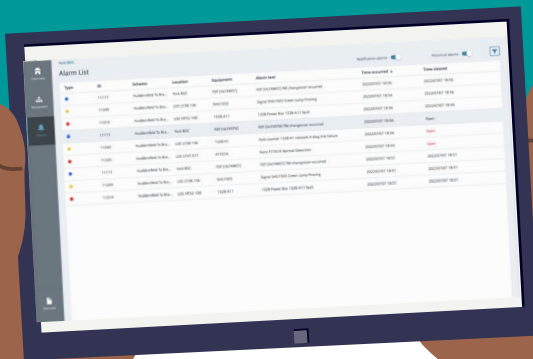
Key Functionalities

Indicated Alarms

- Expert system-guided resolution (based on expanding knowledge)
- Reduced time clearing faults and penalties associated
- Reduced maintenance efforts
- Colour-coded alarm representation

Overview Map

- Visual representation of the railway system
- Geolocation of trackside equipment
- Display of operation alarms



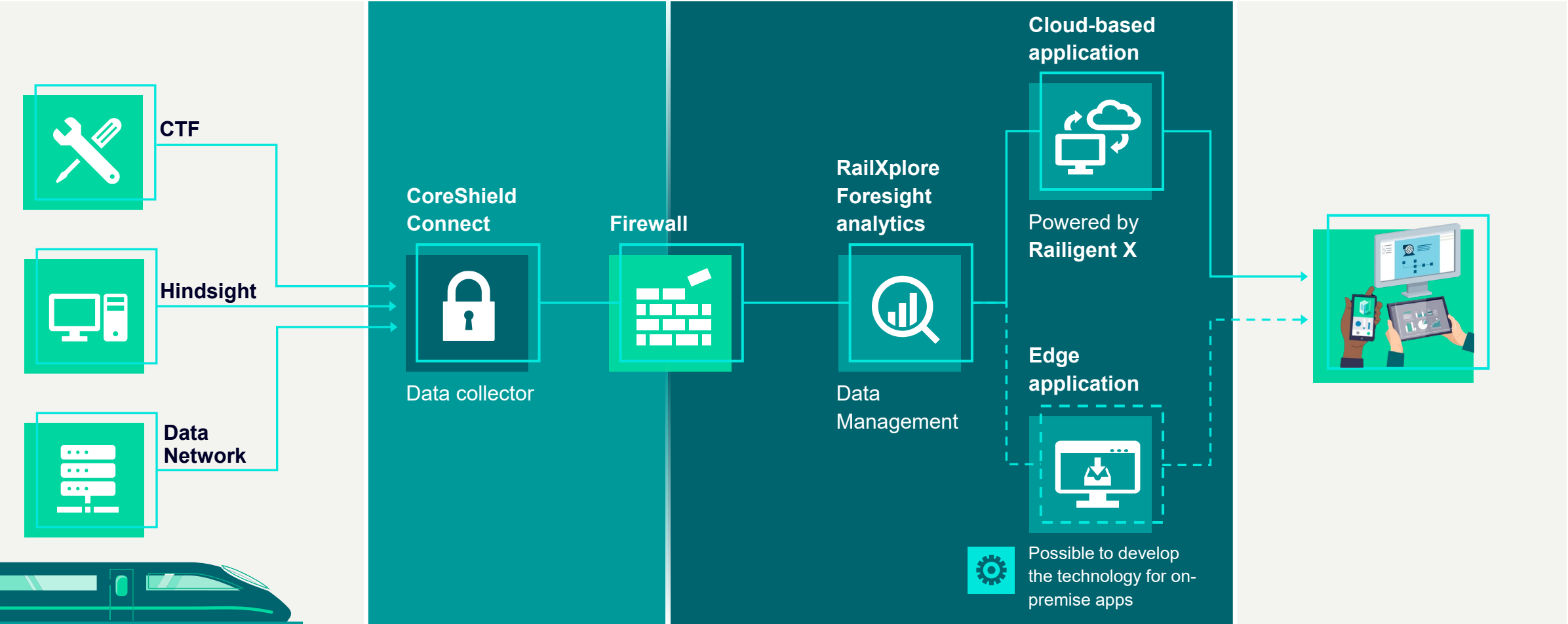
System Architecture

➤ Data sources

➤ System connectivity

➤ Data processing

➤ Output front end



References

Network Rail & York Rail Operating Centre

The United Kingdom

Siemens Mobility have collaborated with Network Rail signalling and telecoms engineering teams including front line operational maintenance representatives in the initial specification / development and testing of **RailXplore Foresight** and continue to maintain collaboration to further refine functionality in order to deliver NRs end user requirements.

RailXplore Foresight is currently deployed across 2 interlockings in the Huddersfield area of the UK. Within the next 3 months it is planned to be deployed to further interlockings managed from the York Rail Operating Centre (YROC).



| Contact

Jim Thwaite

Product Lifecycle Manager

Siemens Mobility GmbH
SMO RI R&D UK TP
17 Langley Park Way
Chippenham SN15 1GG
United Kingdom

Mobile: +44 7921 246176

E-mail: jim.thwaite@siemens.com

Disclaimer

© Siemens 2022

Subject to changes and errors. The information given in this document only contains general descriptions and/or performance features which may not always specifically reflect those described, or which may undergo modification in the course of further development of the products. The requested performance features are binding only when they are expressly agreed upon in the concluded contract.

All product designations may be trademarks or other rights of Siemens AG, its affiliated companies or other companies whose use by third parties for their own purposes could violate the rights of the respective owner.