



Reyrolle
Protection
Devices

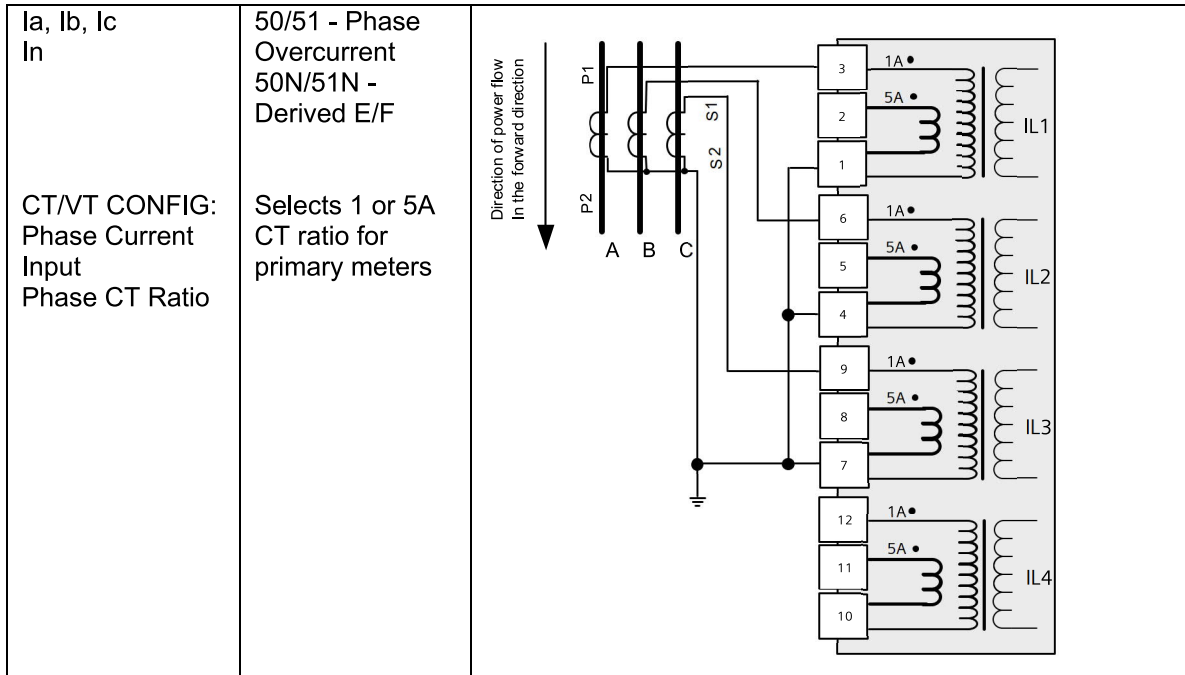
7SR10 Argus

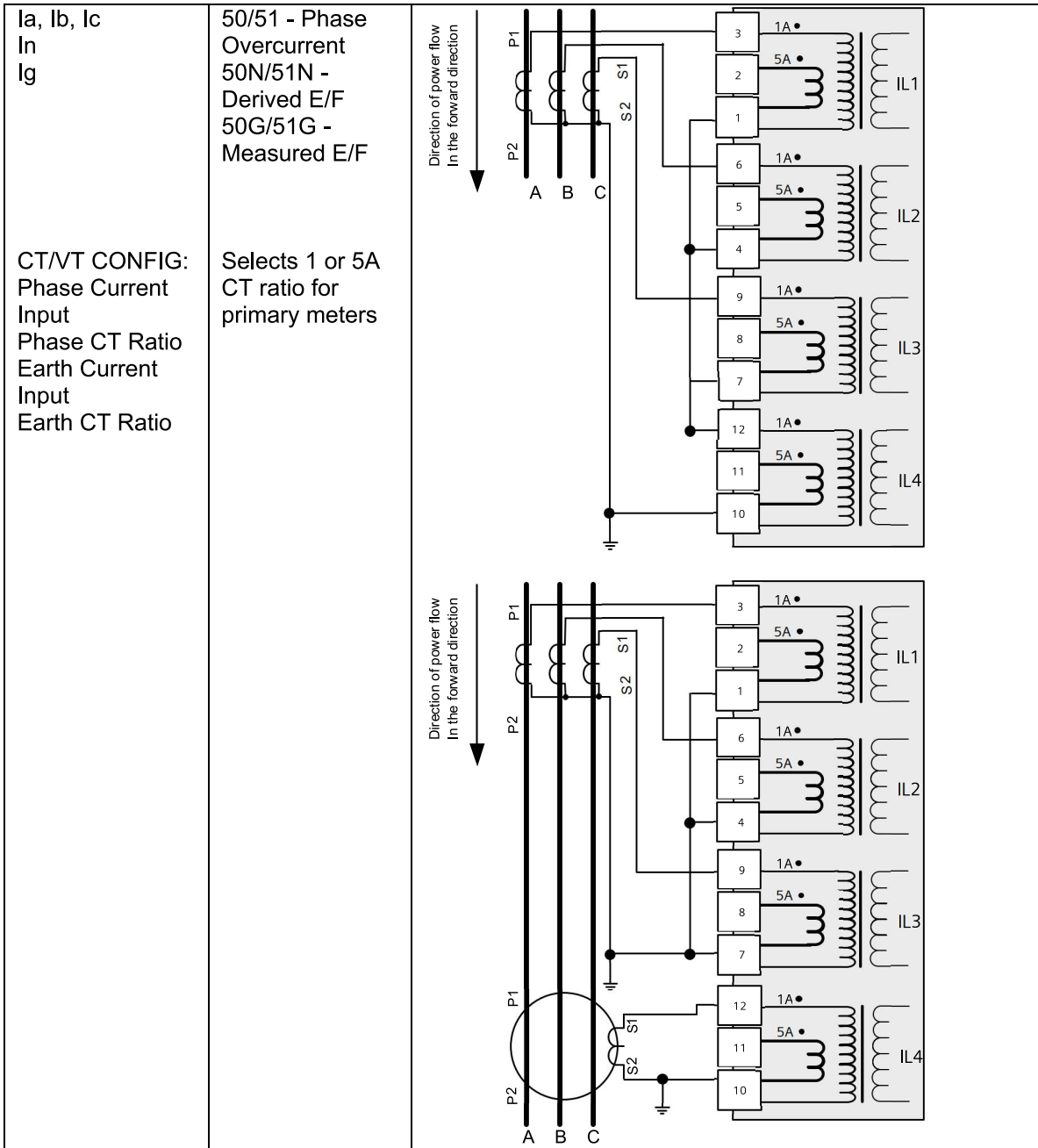
Overcurrent Relay

Schemi Tipici Inserzioni TA e TV

1.3 Current Transformer Configurations

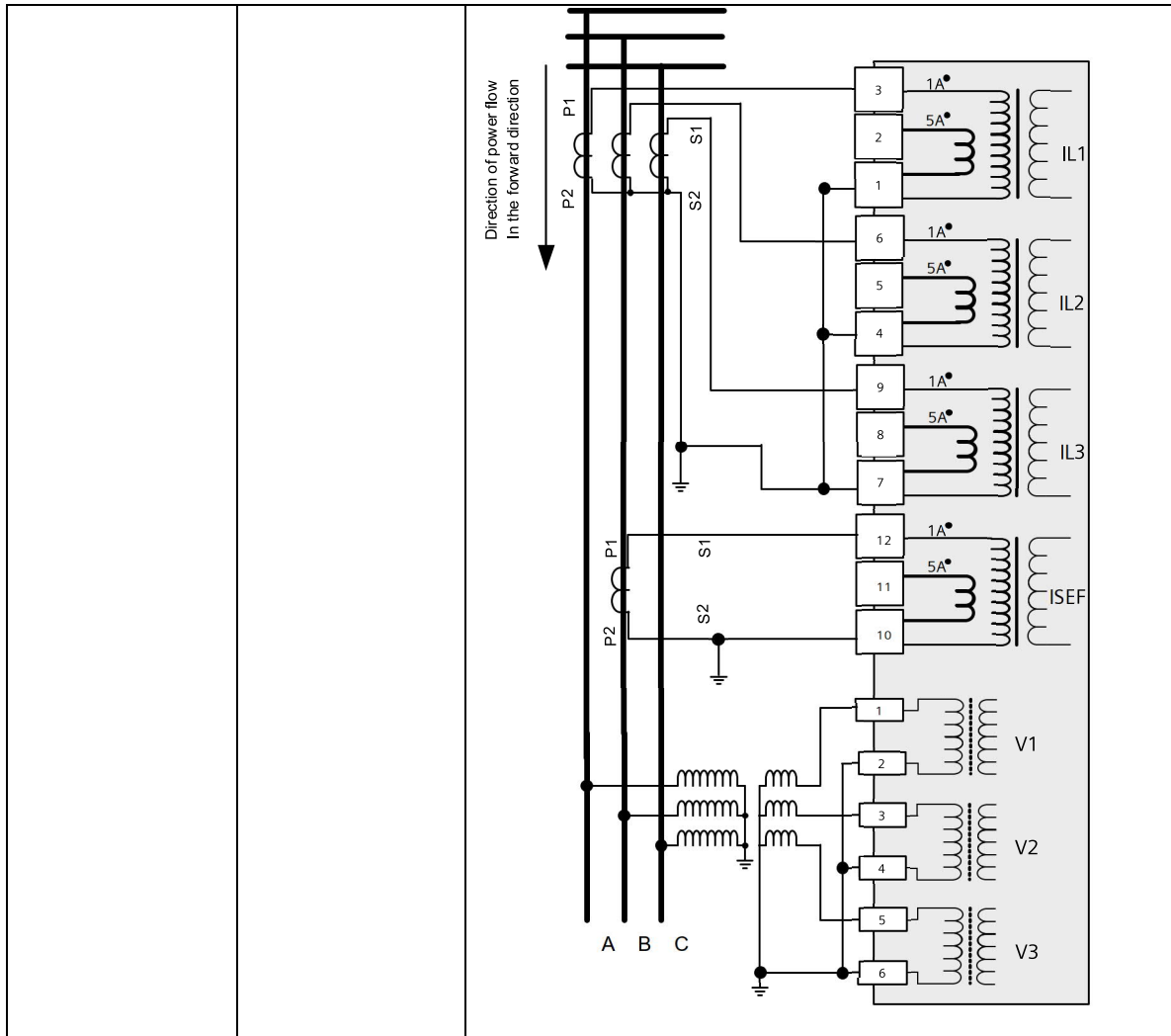
Relay Current Configuration Setting	Description	Connection
IG	50G/51G - Measured E/F	
ISEF	50SEF/51SEF - Measured Sensitive E/F	
IREF	64H – High Impedance Restricted E/F	





<p>la, lb, lc ISEF</p> <p>CT/VT CONFIG: Phase Current Input Phase CT Ratio Earth Current Input Earth CT Ratio</p>	<p>2 Phase CT only. For application on isolated or compensated networks.</p> <p>Phase Overcurrent SEF</p> <p>Selects 1 or 5A CT ratio for primary meters</p>	
<p>la, lb, lc In Ig</p> <p>CT/VT CONFIG: Phase Current Input Phase CT Ratio</p>	<p>Phase Overcurrent Derived E/F Measured Standby E/F</p> <p>Selects 1 or 5A CT ratio for primary meters</p>	

<p>Current Input(s): Ia, Ib, Ic</p> <p>Isef</p>	<p>Phase Overcurrent, Derived E/F &</p> <p>'B' Phase Sensitive Power</p>	
<p>CT/VT CONFIG: Phase Current Input</p>	<p>Selects 1 or 5A</p>	
<p>CT/VT CONFIG: Phase CT Ratio</p>	<p>CT ratio for primary meters</p>	
<p>CT/VT CONFIG: Earth Current Input</p>	<p>Selects 1 or 5A for Sensitive Power input</p>	
<p>CT/VT CONFIG: Earth CT Ratio</p>	<p>CT ratio for primary meters for Sensitive Power input</p>	

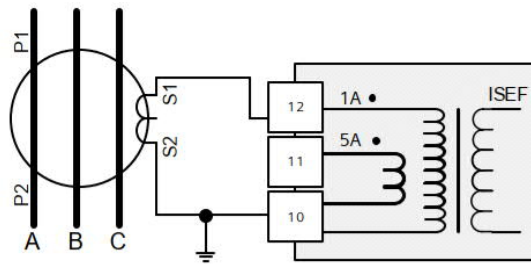


1.4 Voltage Transformer Configurations

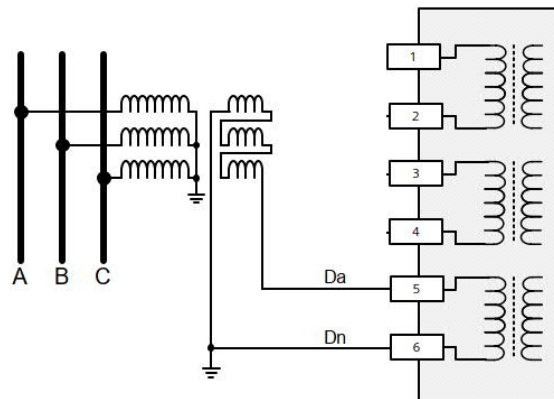
Relay Voltage Configuration Setting	Description	Connection
<p>Van, Vbn, Vcn</p> <p>Calculated NPS ZPS</p>	<p>67 & 67N & 67G 47, 59N, 27/59 & 81 Phase – Neutral Phase – Phase</p>	
<p>Va, Vb, Vc</p> <p>Calculated NPS</p> <p>No ZPS available</p>	<p>67 & 67N & 67G 47, 27/59 & 81 Phase – Neutral Phase – Phase</p>	
<p>Vab, Vbc, 3Vo</p> <p>Calculated Phase – Phase Phase Vca</p> <p>Calculated NPS ZPS</p>	<p>67 & 67N & 67G 47, 59N, 27/59 & 81 Phase – Neutral</p>	

1.5 SCHEMA BASE DI INSERIZIONE PER 67N (Conforme CEI 0-16)

Inserzione di TO e TV (Triangolo aperto) per funzione 67N



Inserzione TO



Inserzione TV (avvolgimento a triangolo aperto)