

**SIEMENS**

*Ingenuity for life*

*Industry Online Support*

Home

# S7-200 SMART OPC Communication with SCADA

S7 - 200 SMART / Version 2.3 / WinCC 7.4

<https://w3.siemens.co.in/automation/in/en/automation-systems/industrial-automation/s7-200-smart-plc/pages/default.aspx>

Siemens  
Industry  
Online  
Support



## Legal information

### Use of application examples

Application examples illustrate the solution of automation tasks through an interaction of several components in the form of text, graphics and/or software modules. The application examples are a free service by Siemens AG and/or a subsidiary of Siemens AG ("Siemens"). They are non-binding and make no claim to completeness or functionality regarding configuration and equipment. The application examples merely offer help with typical tasks; they do not constitute customer-specific solutions. You yourself are responsible for the proper and safe operation of the products in accordance with applicable regulations and must also check the function of the respective application example and customize it for your system.

Siemens grants you the non-exclusive, non-sub licensable and non-transferable right to have the application examples used by technically trained personnel. Any change to the application examples is your responsibility. Sharing the application examples with third parties or copying the application examples or excerpts thereof is permitted only in combination with your own products. The application examples are not required to undergo the customary tests and quality inspections of a chargeable product; they may have functional and performance defects as well as errors. It is your responsibility to use them in such a manner that any malfunctions that may occur do not result in property damage or injury to persons.

### Disclaimer of liability

Siemens shall not assume any liability, for any legal reason whatsoever, including, without limitation, liability for the usability, availability, completeness and freedom from defects of the application examples as well as for related information, configuration and performance data and any damage caused thereby. This shall not apply in cases of mandatory liability, for example under the German Product Liability Act, or in cases of intent, gross negligence, or culpable loss of life, bodily injury or damage to health, non-compliance with a guarantee, fraudulent non-disclosure of a defect, or culpable breach of material contractual obligations. Claims for damages arising from a breach of material contractual obligations shall however be limited to the foreseeable damage typical of the type of agreement, unless liability arises from intent or gross negligence or is based on loss of life, bodily injury or damage to health. The foregoing provisions do not imply any change in the burden of proof to your detriment. You shall indemnify Siemens against existing or future claims of third parties in this connection except where Siemens is mandatorily liable.

By using the application examples you acknowledge that Siemens cannot be held liable for any damage beyond the liability provisions described.

### Other information

Siemens reserves the right to make changes to the application examples at any time without notice. In case of discrepancies between the suggestions in the application examples and other Siemens publications such as catalogs, the content of the other documentation shall have precedence.

The Siemens terms of use (<https://support.industry.siemens.com>) shall also apply.

### Security information

Siemens provides products and solutions with Industrial Security functions that support the secure operation of plants, systems, machines and networks.

In order to protect plants, systems, machines and networks against cyber threats, it is necessary to implement – and continuously maintain – a holistic, state-of-the-art industrial security concept. Siemens' products and solutions constitute one element of such a concept.

Customers are responsible for preventing unauthorized access to their plants, systems, machines and networks. Such systems, machines and components should only be connected to an enterprise network or the Internet if and to the extent such a connection is necessary and only when appropriate security measures (e.g. firewalls and/or network segmentation) are in place.

For additional information on industrial security measures that may be implemented, please visit <https://www.siemens.com/industrialsecurity>.

Siemens' products and solutions undergo continuous development to make them more secure. Siemens strongly recommends that product updates are applied as soon as they are available and that the latest product versions are used. Use of product versions that are no longer supported, and failure to apply the latest updates may increase customer's exposure to cyber threats.

To stay informed about product updates, subscribe to the Siemens Industrial Security RSS Feed at: <https://www.siemens.com/industrialsecurity>.

# Table of contents

	<b>Warranty and liability</b> .....	<b>2</b>
<b>1</b>	<b>Introduction</b> .....	<b>4</b>
	1.1 Overview.....	4
	1.2 Components used .....	4
<b>2</b>	<b>Engineering</b> .....	<b>5</b>
	2.1 Hardware setup .....	5
<b>3</b>	<b>Engineering</b> .....	<b>6</b>
	3.1 Description of interface.....	6
	3.2 Project integration .....	6
	3.3 Operation.....	21
<b>4</b>	<b>Appendix</b> .....	<b>22</b>
	4.1 Service and support .....	22
	4.2 Support.....	23
	4.3 Links and literature .....	23
	4.4 Change documentation .....	23

# 1 Introduction

## 1.1 Overview

The controller consists of S7-200 Smart PLC including the Ethernet communication port. Via Ethernet (TP: Twisted-Pair) the controller is connected to the PC (Personal Computer). OPC Server, which provides the data. The PC ACCESS is shipped with S7-200 Smart. OPC Server, displays the data from the OPC Server.

## 1.2 Components used

This application example has been created with the following hardware and software components:

Table 1-1

Component	Number	Article number	Note
CPU ST20	0	6ES7-288-1ST20-0AA0	
CPU ST30	0	6ES7-288-1ST30-0AA0	
CPU ST40	4	6ES7-288-1ST40-0AA0	
CPU ST60	0	6ES7-288-1ST60-0AA0	
S7 MICROWIN SMART V2.4	1	6ES7 288-SW01-0AA0	
WinCC 7.4	1		
S7-200 PC Access SMART V2.3	1		

This application example consists of the following components:

Table 1-2

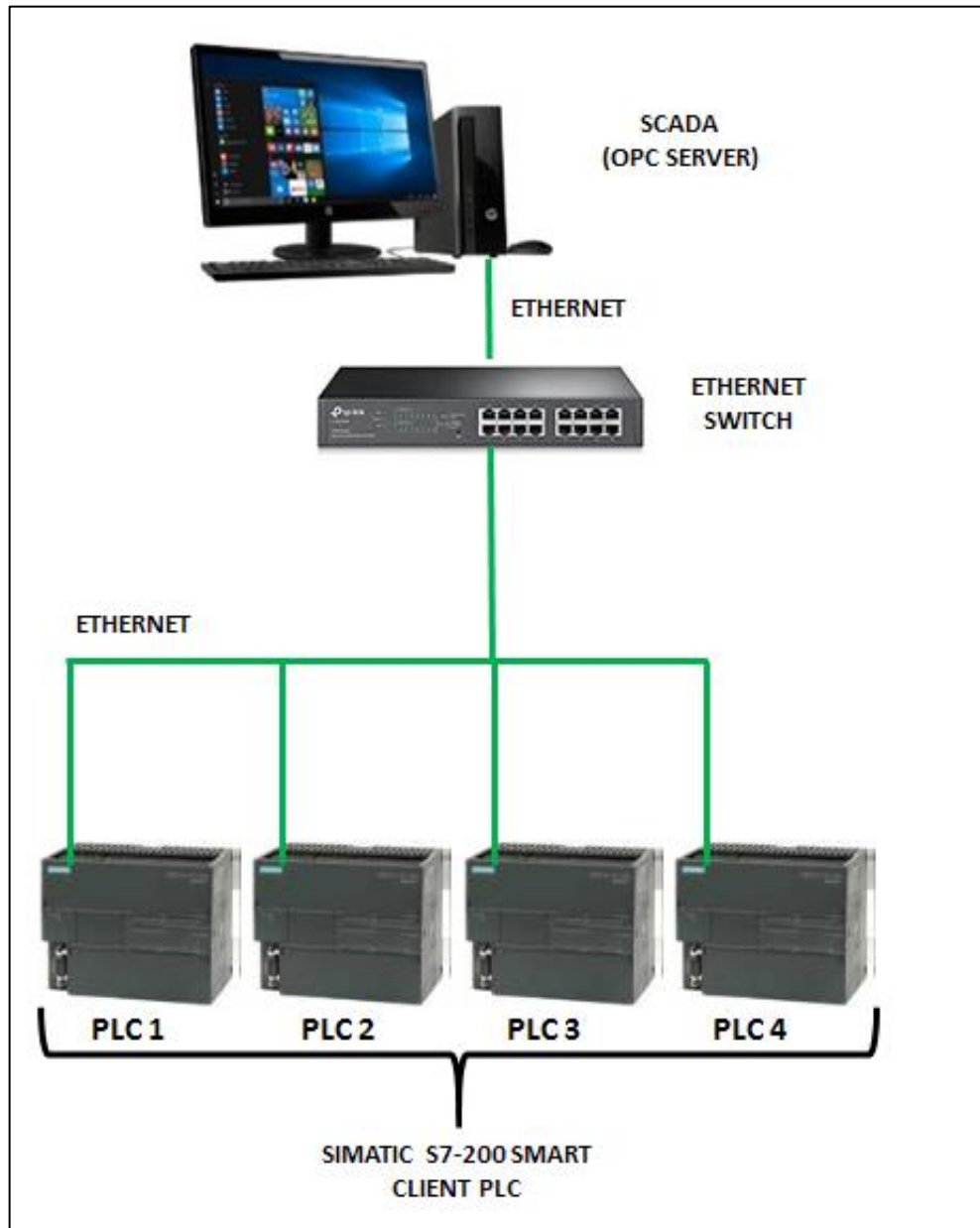
Component	File name	Note



## 2 Engineering

### 2.1 Hardware setup:

The figure below shows a schematic overview of the most important components of the solution:



## 3 Engineering

### 3.1 Description of interface

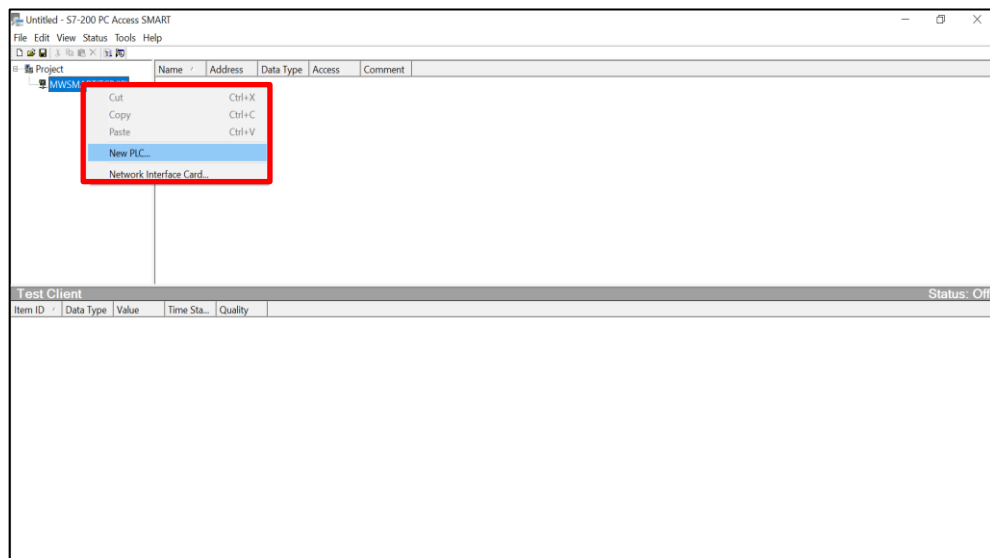
There is no driver for communication with the S7-200 SMART CPU in WinCC, so communication via Ethernet between WinCC and the S7-200 SMART CPU can only be done via OPC. As the Server side of the OPC, the S7-200 SMART CPU only needs to set the IP address. The PC is used as the client side of the OPC to establish a PC Station with the S7-200 SMART.OPC Server under WinCC Explorer software to communicate with the S7-200 SMART. After the PC Station is set up, the implementation steps in WinCC are as follows:

### 3.2 Project integration

#### 1. Establish all the Tags to be used in WinCC Explorer in PC ACCESS software.

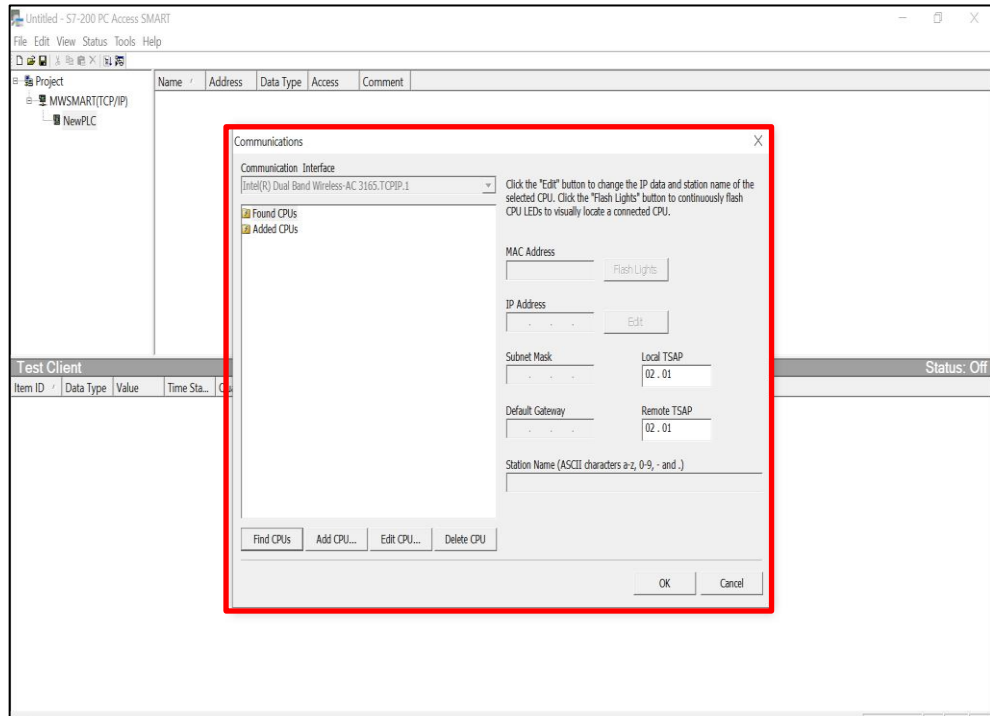
First create all the Tags to be used in the PC ACCESS as mention below. The following settings have to be made in the software configuration to open S7-200 PC Access SMART S7-200 PC access smart that allows you to monitor all configured PLCs data.

1. Double click on icon of S7-200 PC Access SMART.
2. After clicking icon, a window will appear in which you have to click on project tree.
3. In project tree, right click on MWSMART (TCP/IP) and select New PLC.

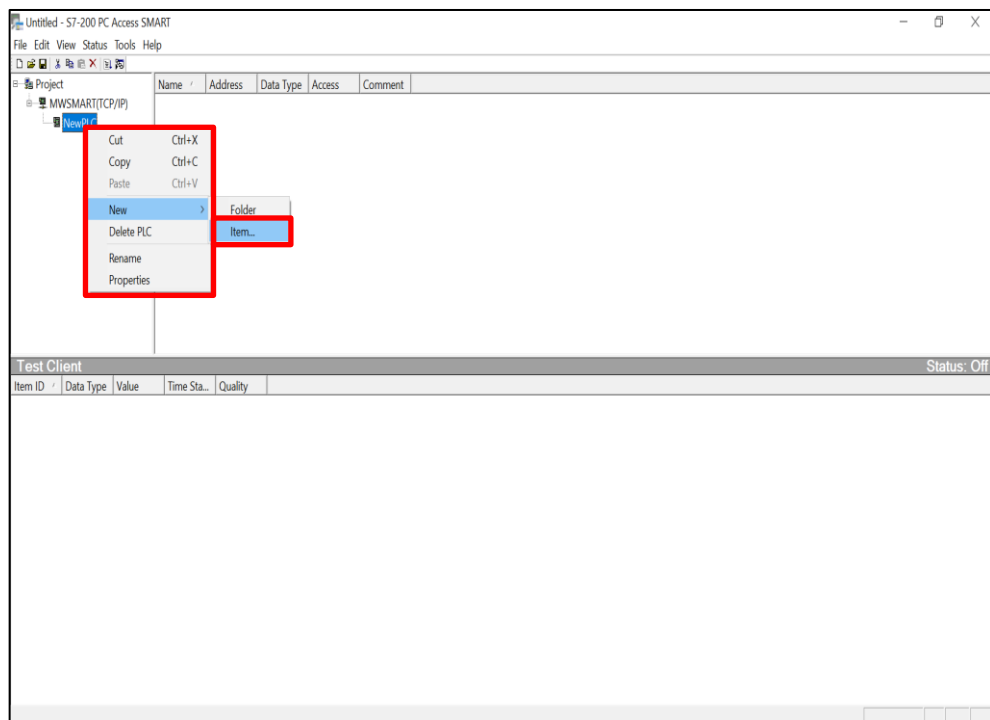


4. The Communication Interface window will open, and then click on Find CPUs.
5. Select the IP address of CPU for communication then click on "OK".
6. Repeat the step 4 to step 6 for another PLC with different IP address.
7. Renaming of PLC can be done by right click on New PLC and select Rename option.
8. You can also change IP Address by Right click on New PLC, click on properties.
9. Then communications window will appear, click on find CPU.
10. As you select find CPU, it will show connected CPU to the PC.
11. Then click on "OK".

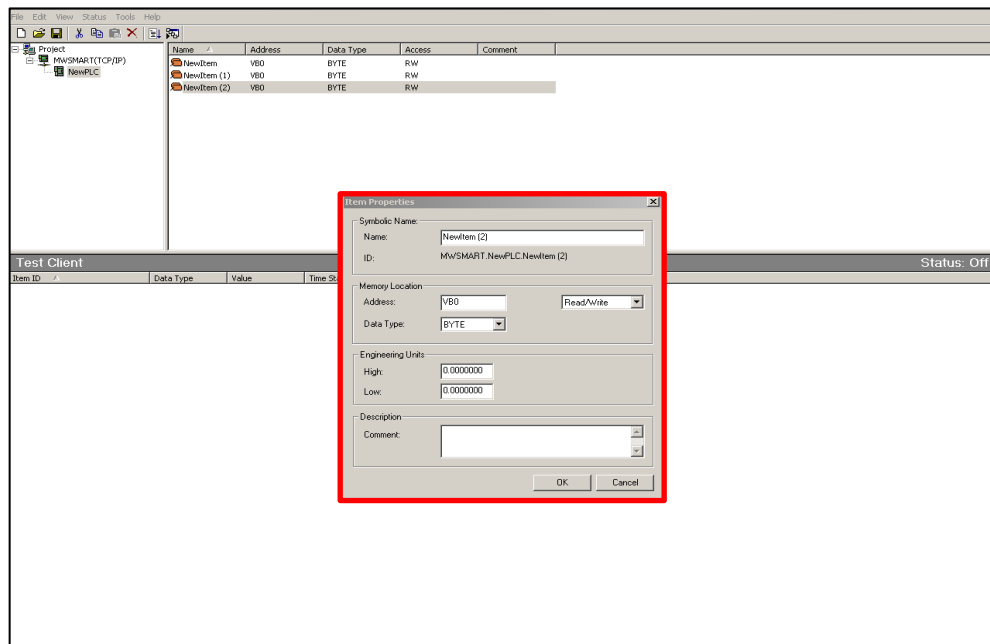
### 3 Engineering



12. In project tree, right click on New PLC then select New → Item.

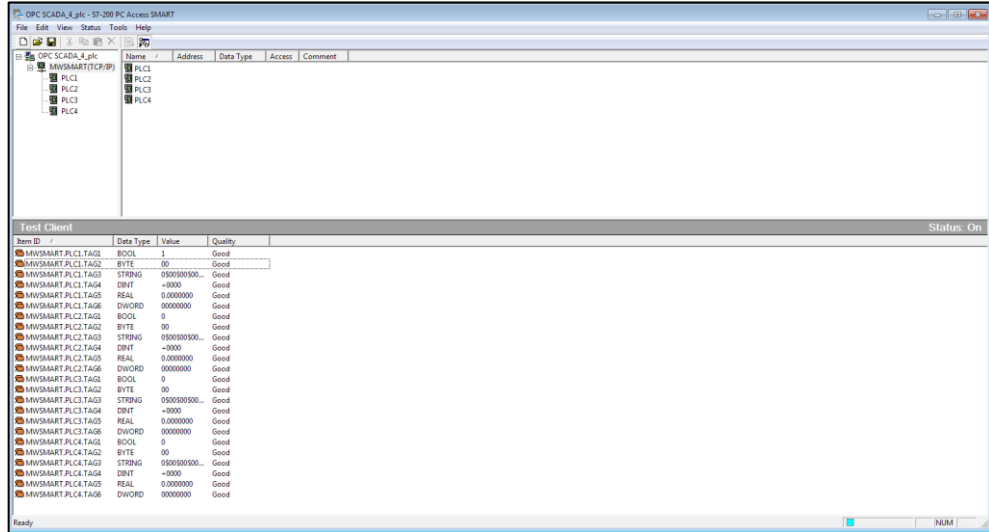


13. Item properties window will be open.



14. In Item Properties, change Symbolic Name (Name) and Memory Location (Address) and select Data Type accordingly then click on OK.
15. Repeat the step13 to step15 for New Item (New Tag).
16. To monitor the added items Click on MWSMART (TCP/IP) then Click on' Add Current Items to Test Client" icon in tool bar the click on save file then Test Client Status.
17. If PLC is properly connected to PC then in Test client window, check the communication result it will show good quality otherwise it show bad quality.





18. If the communication quality is "bad", the communication is unsuccessful and you need to check if the software configuration and hardware connection are correct.
19. Minimize the S7-200 PC Access SMART window.

**Note:**

The tag need to be display in scada need to configure in PC Access.  
 OPC Communication supports all data types.

## 2. Opening of New Project & Adding a new driver in WinCC Explorer.

Double click on "WinCC Explorer". Open a new project in the WinCC software, right-click on "Tag Management" and select "Open" in the shortcut menu. In the "WinCC Configuration Studio" window that opens, right-click "Tag Management" and select "Add New Driver" in the shortcut menu to add the " OPC " driver. Figure 1. Shown.

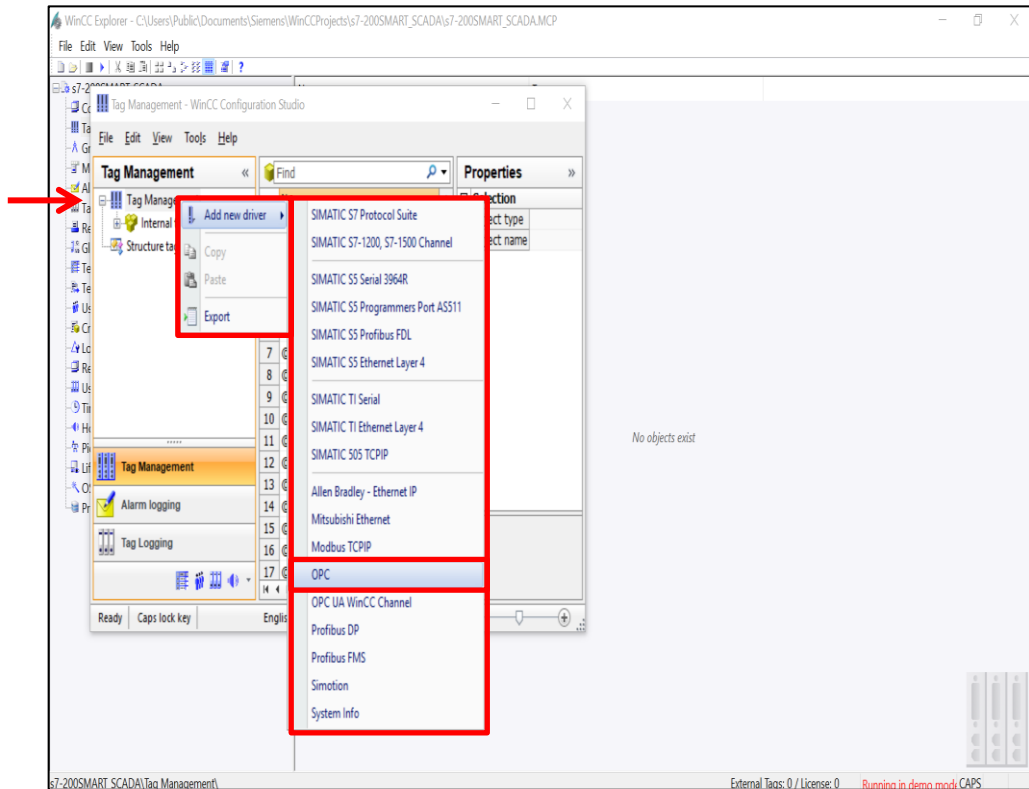


Figure 1. Adding a new drive "OPC"

### 3. Searching and adding tags defined in PC ACCESS in WinCC

First right click on "OPC Groups" and click on "System parameters" in the shortcut menu. In the pop-up "OPC Item Manager" window extend Local and select "S7200SMART.OPCServer" and click on the "Browse Server" button. In the "Filtering criteria" window that pops up, select "Next" to search. As shown in Figure2.

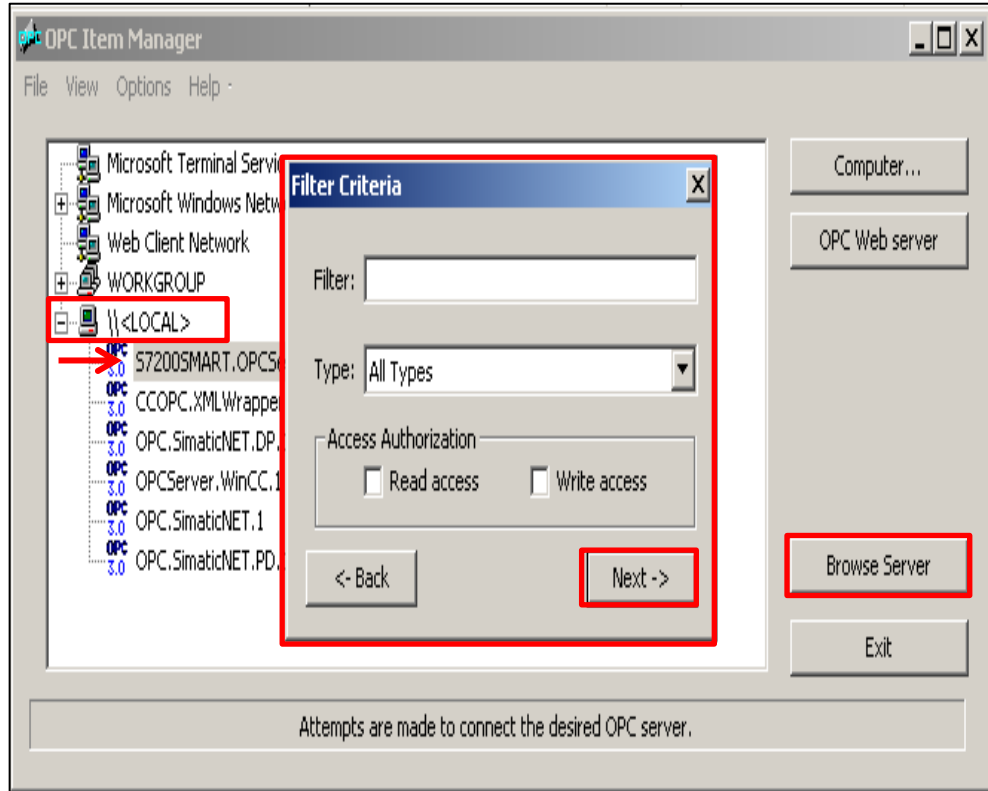


Figure 2. Select browse server

**4. Create a new connection and add the required Tags**

Select the desired Tag in the Tag list, click the "Add Item" button to add the required Tag, and you will automatically be asked to create a new connection and add the Tag to the connection, as shown in Figure 3 & 4. If you need to add more than one Tag, repeat the steps as described above.

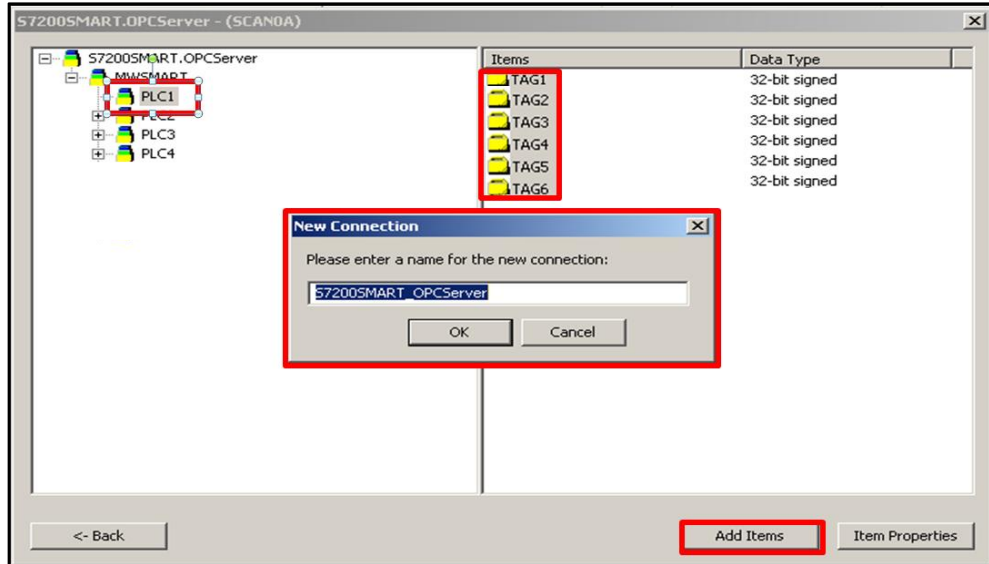


Figure 3. Establishing a new connection

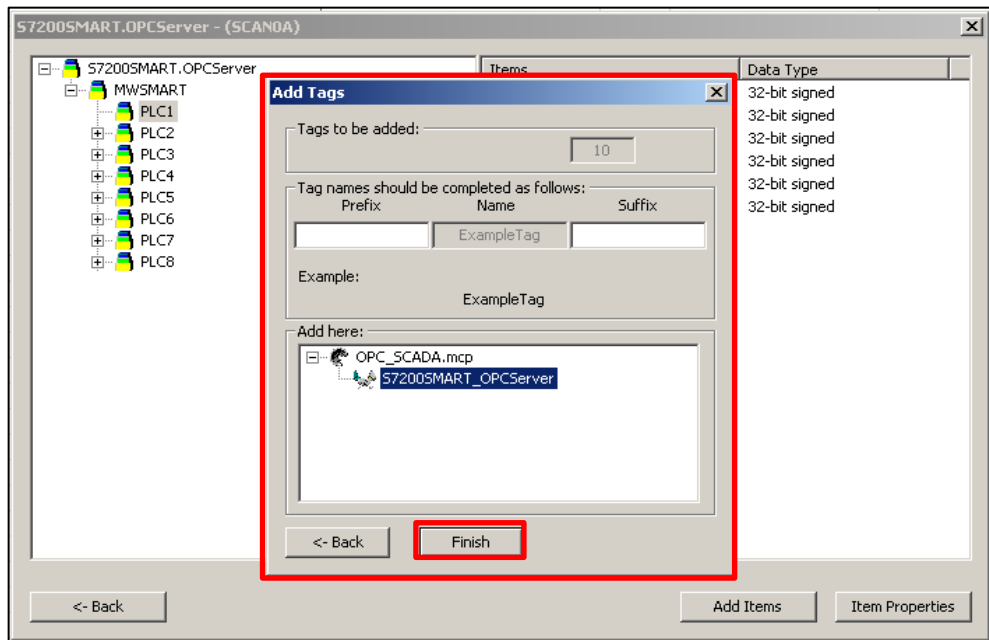


Figure 4. Adding Tags

Figure 3 & 4 Adding Tags and establishing the new connection. Once the Tags have been successfully added, the OPC connections and Tags that have been added are displayed in the tag management in WinCC, as shown in Figure5. Shown.Right click on S7200SMART OPC Server, then select New Group. Rename New Group as per PLCs named in S7-200 PC Access SMART software. Once you rename, click on S7200SMART OPC Server go to column number 6 (Group) then tagwise select PLC.

After tagwise select PLC minimize the Tag Management window.

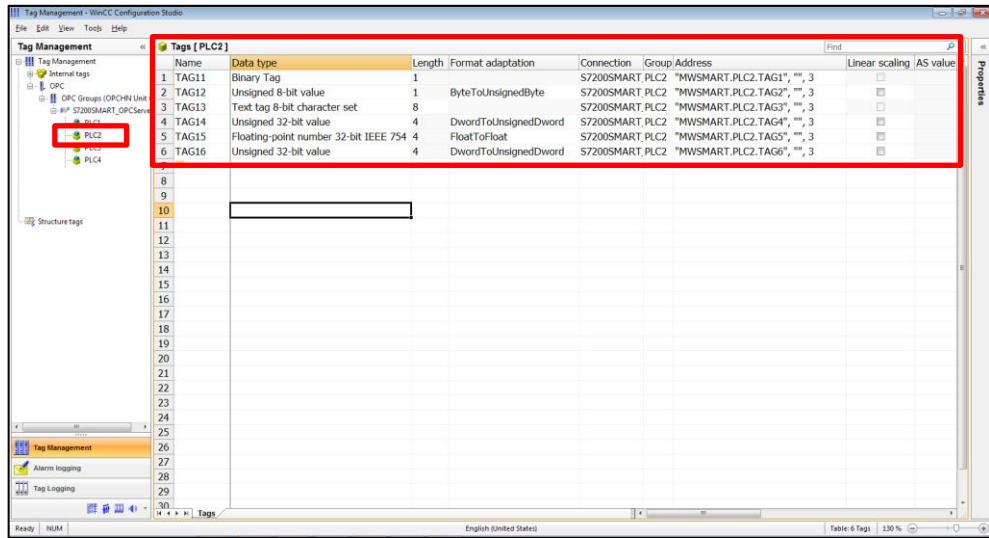


Figure 5. Successfully added Tags from PC ACCESS

### 5. WINCC creates & monitors the screen

In WinCC Explorer open Graphics Designer. WINCC creates the screen and monitors the New screen in the Tag WINCC, adds the “input/output field”, and selects the OPC Tag for it, as shown in Figure 6. Goto WINCC Explorer to Activate WINCC to test SCADA and S7-200 SMART OPC communication. To create new screen go to Graphics Designer, accordingly give tags and delay as shown in figure 6.

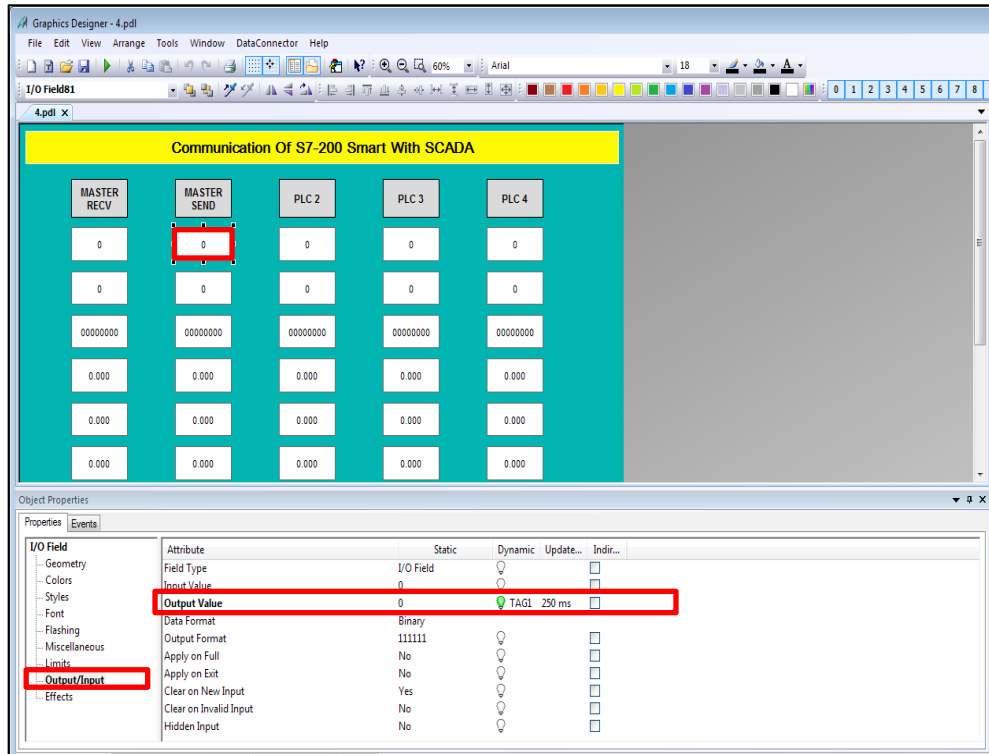


Figure 6. I/O Field , their tag and time delay



## 6. Script Design

In WinCC Explorer window, in project tree, right click on global script. In global script, select Open VBS Editor then in the pop-up Global Script VBS Window will appear then select Actions right click on Action → New → Action(Alt + F3) (which is in workplace). Start writing script. You have to save Script file according to project path.

Note: Script file will be save by .bac extension.

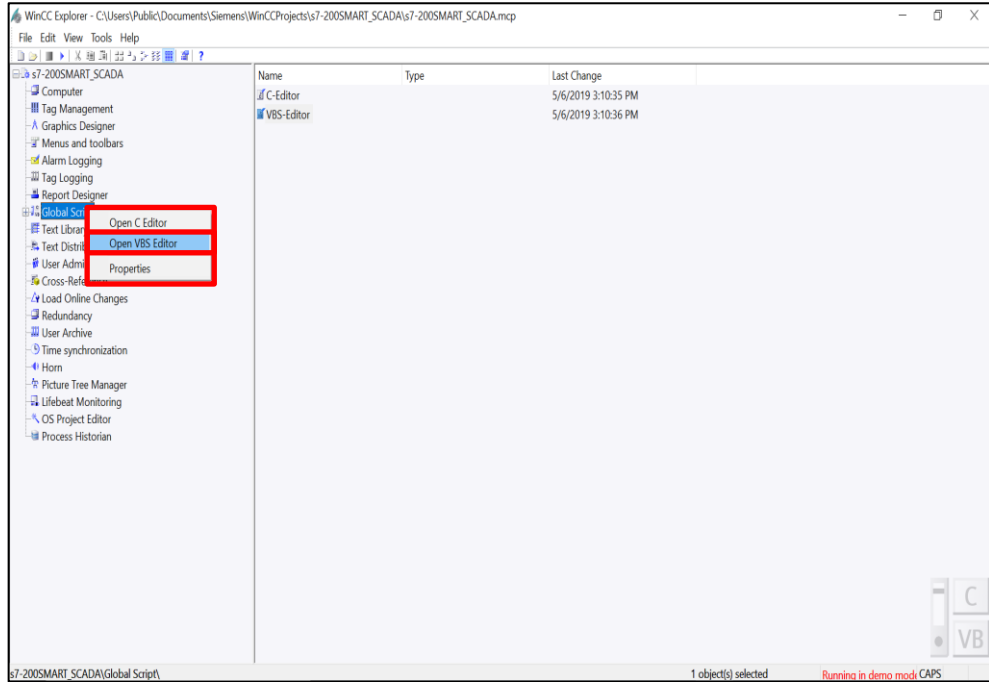


Figure 7. Global Script→Open VBS Script

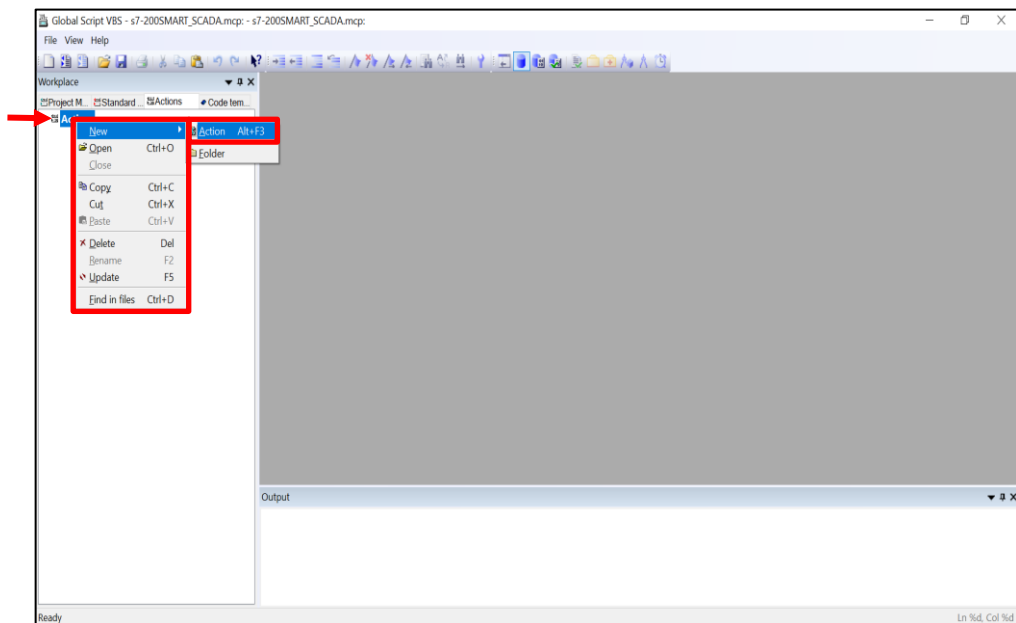


Figure 8. Script file generation

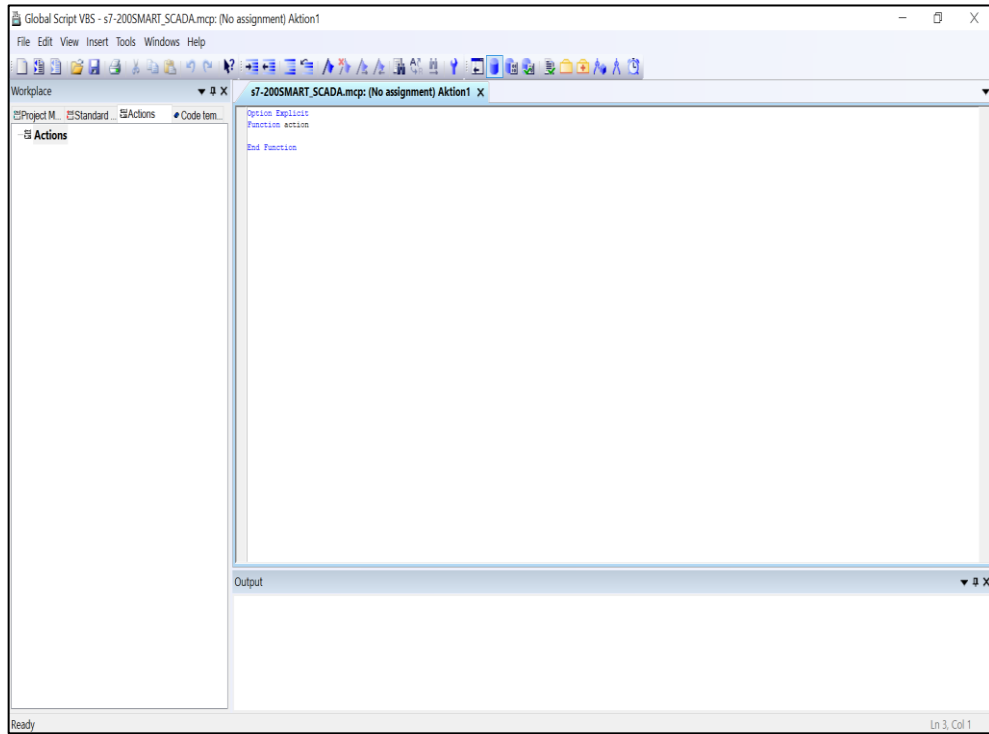


Figure 9. Script window

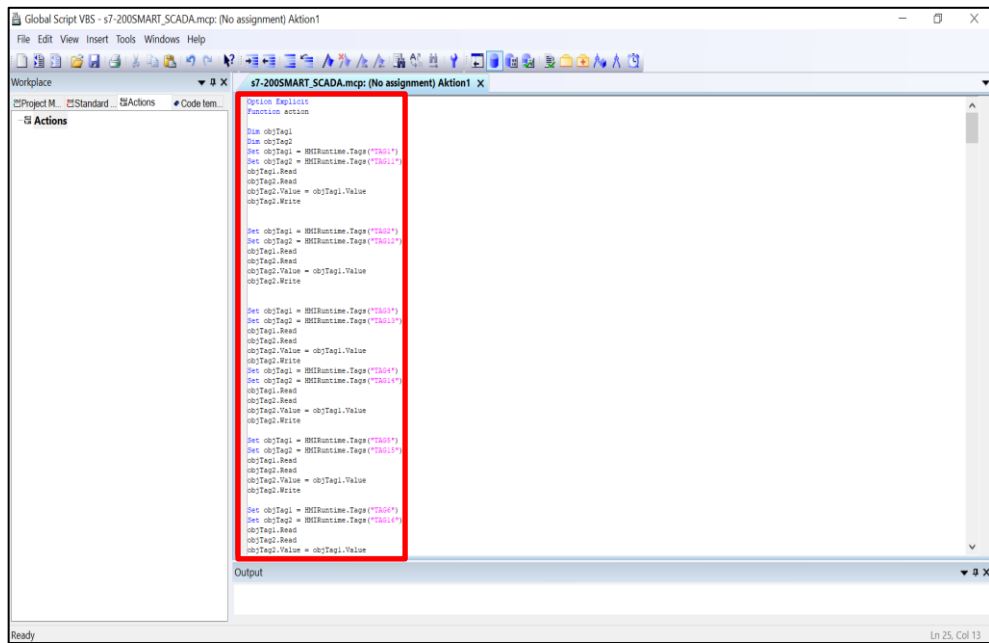


Figure 10. Script

### 7. Script File:

```
Option Explicit  
Function action  
Dim objTag1  
Dim objTag2
```

```
Set objTag1 = HMIRuntime.Tags("TAG1")  
Set objTag2 = HMIRuntime.Tags("TAG11")  
objTag1.Read  
objTag2.Read  
objTag2.Value = objTag1.Value  
objTag1.Write  
objTag2.Write
```

```
Set objTag1 = HMIRuntime.Tags("TAG2")  
Set objTag2 = HMIRuntime.Tags("TAG12")  
objTag1.Read  
objTag2.Read  
objTag2.Value = objTag1.Value  
objTag1.Write  
objTag2.Write
```

```
Set objTag1 = HMIRuntime.Tags("TAG3")  
Set objTag2 = HMIRuntime.Tags("TAG13")  
objTag1.Read  
objTag2.Read  
objTag2.Value = objTag1.Value  
objTag1.Write  
objTag2.Write
```

```
Set objTag1 = HMIRuntime.Tags("TAG4")  
Set objTag2 = HMIRuntime.Tags("TAG14")  
objTag1.Read  
objTag2.Read  
objTag2.Value = objTag1.Value  
objTag1.Write  
objTag2.Write
```

```
Set objTag1 = HMIRuntime.Tags("TAG5")  
Set objTag2 = HMIRuntime.Tags("TAG15")  
objTag1.Read  
objTag2.Read  
objTag2.Value = objTag1.Value  
objTag1.Write  
objTag2.Write
```

```
Set objTag1 = HMIRuntime.Tags("TAG6")  
Set objTag2 = HMIRuntime.Tags("TAG16")  
objTag1.Read  
objTag2.Read  
objTag2.Value = objTag1.Value  
objTag1.Write  
objTag2.Write
```

```
Set objTag1 = HMIRuntime.Tags("TAG1")  
Set objTag2 = HMIRuntime.Tags("TAG21")  
objTag1.Read  
objTag2.Read
```

```
objTag2.Value = objTag1.Value  
objTag2.Write
```

```
Set objTag1 = HMIRuntime.Tags("TAG2")  
Set objTag2 = HMIRuntime.Tags("TAG22")  
objTag1.Read  
objTag2.Read  
objTag2.Value = objTag1.Value  
objTag2.Write
```

```
Set objTag1 = HMIRuntime.Tags("TAG3")  
Set objTag2 = HMIRuntime.Tags("TAG23")  
objTag1.Read  
objTag2.Read  
objTag2.Value = objTag1.Value  
objTag2.Write
```

```
Set objTag1 = HMIRuntime.Tags("TAG4")  
Set objTag2 = HMIRuntime.Tags("TAG24")  
objTag1.Read  
objTag2.Read  
objTag2.Value = objTag1.Value  
objTag2.Write
```

```
Set objTag1 = HMIRuntime.Tags("TAG5")  
Set objTag2 = HMIRuntime.Tags("TAG25")  
objTag1.Read  
objTag2.Read  
objTag2.Value = objTag1.Value  
objTag2.Write
```

```
Set objTag1 = HMIRuntime.Tags("TAG6")  
Set objTag2 = HMIRuntime.Tags("TAG26")  
objTag1.Read  
objTag2.Read  
objTag2.Value = objTag1.Value  
objTag2.Write
```

```
Set objTag1 = HMIRuntime.Tags("TAG1")  
Set objTag2 = HMIRuntime.Tags("TAG31")  
objTag1.Read  
objTag2.Read  
objTag2.Value = objTag1.Value  
objTag2.Write
```

```
Set objTag1 = HMIRuntime.Tags("TAG2")  
Set objTag2 = HMIRuntime.Tags("TAG32")  
objTag1.Read  
objTag2.Read  
objTag2.Value = objTag1.Value  
objTag2.Write
```

```
Set objTag1 = HMIRuntime.Tags("TAG3")  
Set objTag2 = HMIRuntime.Tags("TAG33")  
objTag1.Read  
objTag2.Read  
objTag2.Value = objTag1.Value  
objTag2.Write
```

```
Set objTag1 = HMIRuntime.Tags("TAG4")
Set objTag2 = HMIRuntime.Tags("TAG34")
objTag1.Read
objTag2.Read
objTag2.Value = objTag1.Value
objTag2.Write
```

```
Set objTag1 = HMIRuntime.Tags("TAG5")
Set objTag2 = HMIRuntime.Tags("TAG35")
objTag1.Read
objTag2.Read
objTag2.Value = objTag1.Value
objTag2.Write
```

```
Set objTag1 = HMIRuntime.Tags("TAG6")
Set objTag2 = HMIRuntime.Tags("TAG36")
objTag1.Read
objTag2.Read
objTag2.Value = objTag1.Value
objTag2.Write
```

```
Set objTag1 = HMIRuntime.Tags("TAG31")
Set objTag2 = HMIRuntime.Tags("TAG151")
objTag1.Read
objTag2.Read
objTag2.Value = objTag1.Value
objTag2.Write
```

```
Set objTag1 = HMIRuntime.Tags("TAG32")
Set objTag2 = HMIRuntime.Tags("TAG152")
objTag1.Read
objTag2.Read
objTag2.Value = objTag1.Value
objTag2.Write
```

```
Set objTag1 = HMIRuntime.Tags("TAG33")
Set objTag2 = HMIRuntime.Tags("TAG153")
objTag1.Read
objTag2.Read
objTag2.Value = objTag1.Value
objTag2.Write
```

```
Set objTag1 = HMIRuntime.Tags("TAG34")
Set objTag2 = HMIRuntime.Tags("TAG154")
objTag1.Read
objTag2.Read
objTag2.Value = objTag1.Value
objTag2.Write
```

```
Set objTag1 = HMIRuntime.Tags("TAG35")
Set objTag2 = HMIRuntime.Tags("TAG155")
objTag1.Read
objTag2.Read
objTag2.Value = objTag1.Value
objTag2.Write
```

```
Set objTag1 = HMIRuntime.Tags("TAG36")
Set objTag2 = HMIRuntime.Tags("TAG156")
```

```
objTag1.Read  
objTag2.Read  
objTag2.Value = objTag1.Value  
objTag2.Write
```

```
End Function
```



### 3.3 Operation

**Result:** Communication result of WinCC Explorer and PC Access.

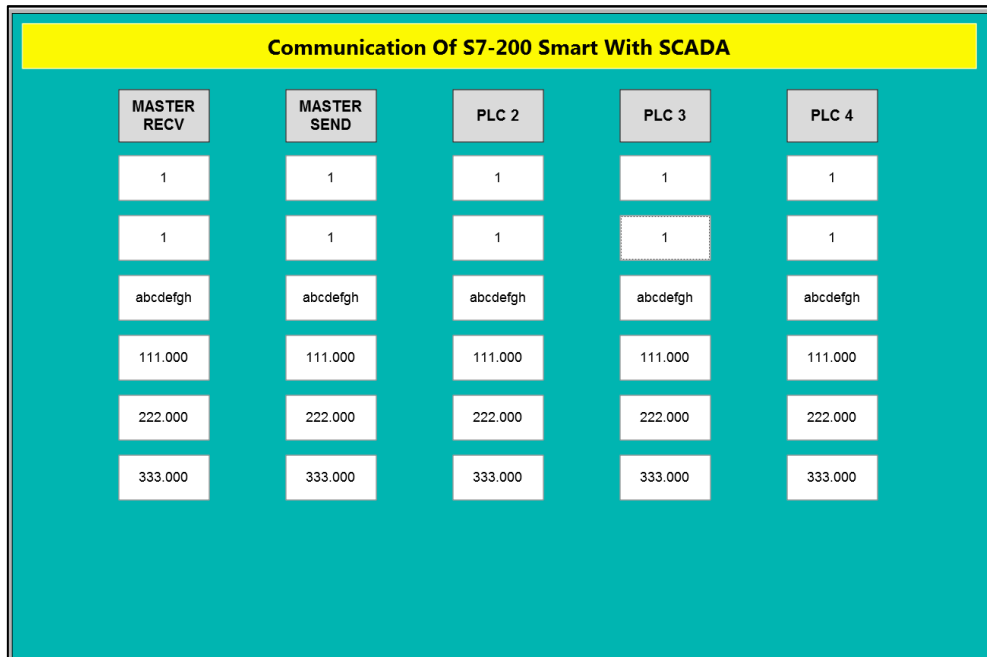


Figure1. Data transfer in WinCC Explorer.

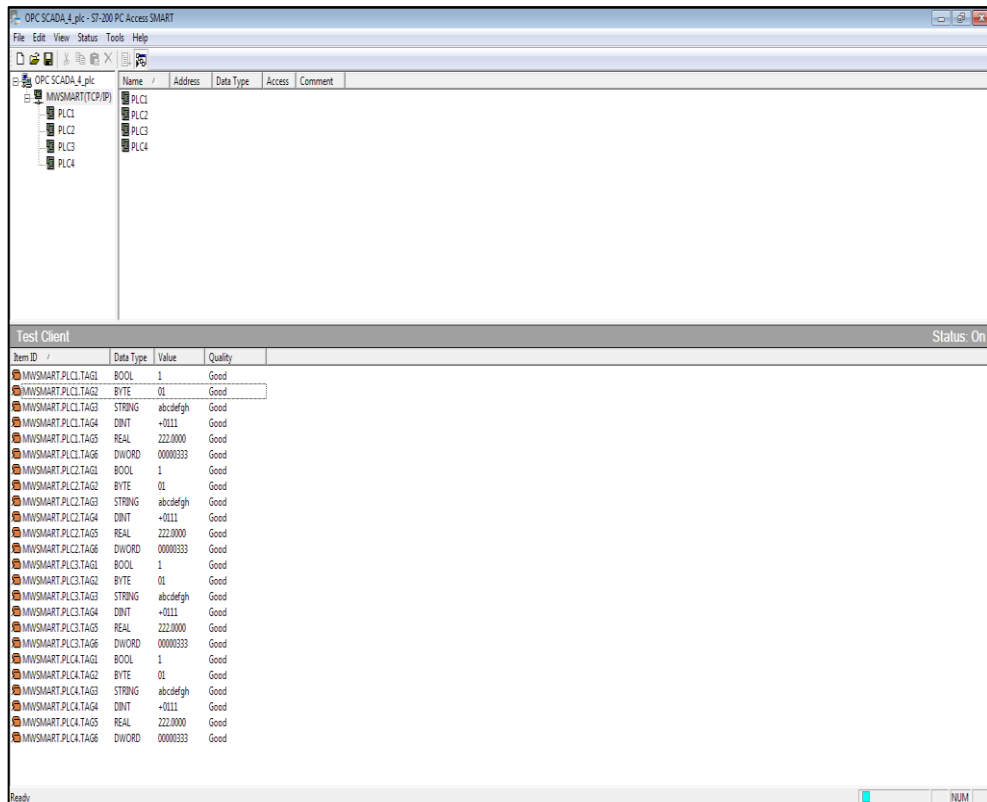


Figure2. Data transfer in PC Access.

## 4 Appendix

### 4.1 Service and support

#### Industry Online Support

Do you have any questions or need assistance?

Siemens Industry Online Support offers round the clock access to our entire service and support know-how and portfolio.

The Industry Online Support is the central address for information about our products, solutions and services.

Product information, manuals, downloads, FAQs, application examples and videos – all information is accessible with just a few mouse clicks:

[support.industry.siemens.com](http://support.industry.siemens.com)

#### Technical Support

The Technical Support of Siemens Industry provides you fast and competent support regarding all technical queries with numerous tailor-made offers

– ranging from basic support to individual support contracts. Please send queries to Technical Support via Web form:

[www.siemens.com/industry/supportrequest](http://www.siemens.com/industry/supportrequest)

#### SITRAIN – Training for Industry

We support you with our globally available training courses for industry with practical experience, innovative learning methods and a concept that's tailored to the customer's specific needs.

For more information on our offered trainings and courses, as well as their locations and dates, refer to our web page:

[www.siemens.com/sitrain](http://www.siemens.com/sitrain)

#### Service offer

Our range of services includes the following:

- Plant data services
- Spare parts services
- Repair services
- On-site and maintenance services
- Retrofitting and modernization services
- Service programs and contracts

You can find detailed information on our range of services in the service catalog web page:

[support.industry.siemens.com/cs/sc](http://support.industry.siemens.com/cs/sc)

#### Industry Online Support app

You will receive optimum support wherever you are with the "Siemens Industry Online Support" app. The app is available for Apple iOS, Android and Windows Phone:

[support.industry.siemens.com/cs/ww/en/sc/2067](http://support.industry.siemens.com/cs/ww/en/sc/2067)

## 4.2 Support

Siemens Ltd  
 DI FA AS  
 Thane Belapur Road  
 Thane 400601, India

Application Center  
 SUP FA  
 Email: rginslpresales-fa.in@siemens.com

## 4.3 Links and literature

Table 4-1

No.	Topic
\1\	Siemens Industry Online Support <a href="https://support.industry.siemens.com">https://support.industry.siemens.com</a>
\2\	Link to this entry page of this application example <a href="https://support.industry.siemens.com/cs/ww/en/view/Entry_ID">https://support.industry.siemens.com/cs/ww/en/view/Entry_ID</a>
\3\	

## 4.4 Change documentation

Table 4-2

Version	Date	Modifications
V1.0	MM/YYYY	First version