



GRIDSCALE X ADVANCED PROTECTION ASSESSMENT

Order Production Module

Efficiently extract database relay settings and generate reports

SIEMENS

At a glance

Order Production enables you to print the complete settings for any individual relay, all relays in a Local Zone of Protection, or all relays in a substation.

The challenge

Once you have set the relay in the database and verified the settings through various tests and simulations in other Advanced Protection Assessment modules, you would want to avoid human error while transferring those settings to paper form.

Our solution

Order Production offers a quick, effortless way of extracting relay settings from your database and reporting them without opportunity to introduce typographical errors. It's a basic function that can contribute significantly to increased productivity of your protection group.

Relay selection

Selection of relays for order production reports is done with the same Data Tree or intuitive, top-down search forms that are found throughout Advanced Protection Assessment. You begin by choosing a substation and then, optionally, Local Zones of Protection (which are roughly analogous to relay panels), protection schemes, and one or more individual relays. As you traverse the path, you may select one or all LZOPs in the substation, one or all protection schemes in an LZOP, or one or more separate relays. Once you have confirmed your selection, Order Production takes it from there, retrieving the relay settings from the database and reporting them on screen or in a Windows print file following the report format you have previously selected in the Preferences menu.

Standard header information

Most report formats utilize the report header data that you fill out in advance of selecting relays. The header form has fields for: Issued By, Issued Date, Checked By, Breakers Tripped, Project, and Notes. The information you enter is then incorporated in the report header at the top of each page.

Data-driven reports

At the present time, Order Production offers ten different report formats, eight that are intended to be setting sheets and two that are test reports. These reports follow designs

requested by individual utilities that conform with their specific needs. All reports are data driven; they usually report both electromechanical and digital relays although one is designed for a specific electromechanical relay. The settings of electromechanical relays are organized by the elements in the relay. Digital relay settings are reported in a single group. The Advanced Protection Assessment team can implement any user's design upon request. The first format is prepared at no charge; a nominal charge is made for subsequent formats. Reports may be sent to the screen for inspection, to a printer, or both.

Setting reports in database editor

For your convenience, a standard setting report is also offered from the Database Editor. This report is printed at the push of a button found in both the LZOP and Relay Data forms. The DBE report is a general summary of relay data. It includes reports of all elements as well as all "common tap" settings of digital devices.

Prefer to send settings to the field electronically?

Advanced Protection Assessment supports settings files direct from the vendors' software, including:

- ABB
- Alstom (Areva)
- Basler Electric
- Beckwith
- ERLPhase
- General Electric
- EnerVista
- Nanjing Nari-Relays Electric Co. (NARI)
- Schneider
- Schweitzer
- Siemens
- VAMP
- ZIV

For Siemens and Schweitzer, Advanced Protection Assessment can not only read the relay setting file, but we can also update an existing relay setting file with new values.

Please note: All models that include the above referenced manufacturer relay settings have been developed by Siemens Industry, Inc. The above referenced relay manufacturers are in

no way endorsing the use of Advanced Protection Assessment. Any and all trademarks are property of the respective owners.

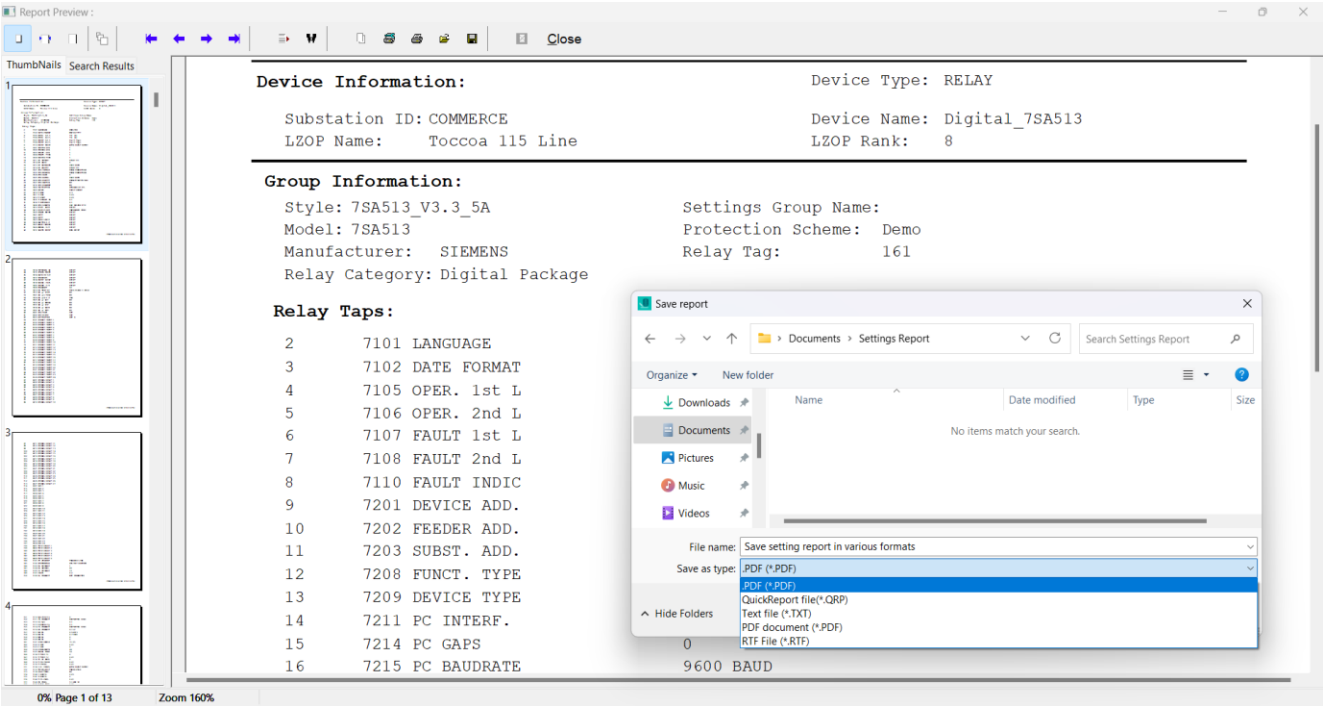


Figure 1: A convenient standard setting report can be printed in text, PDF, and RTF formats.

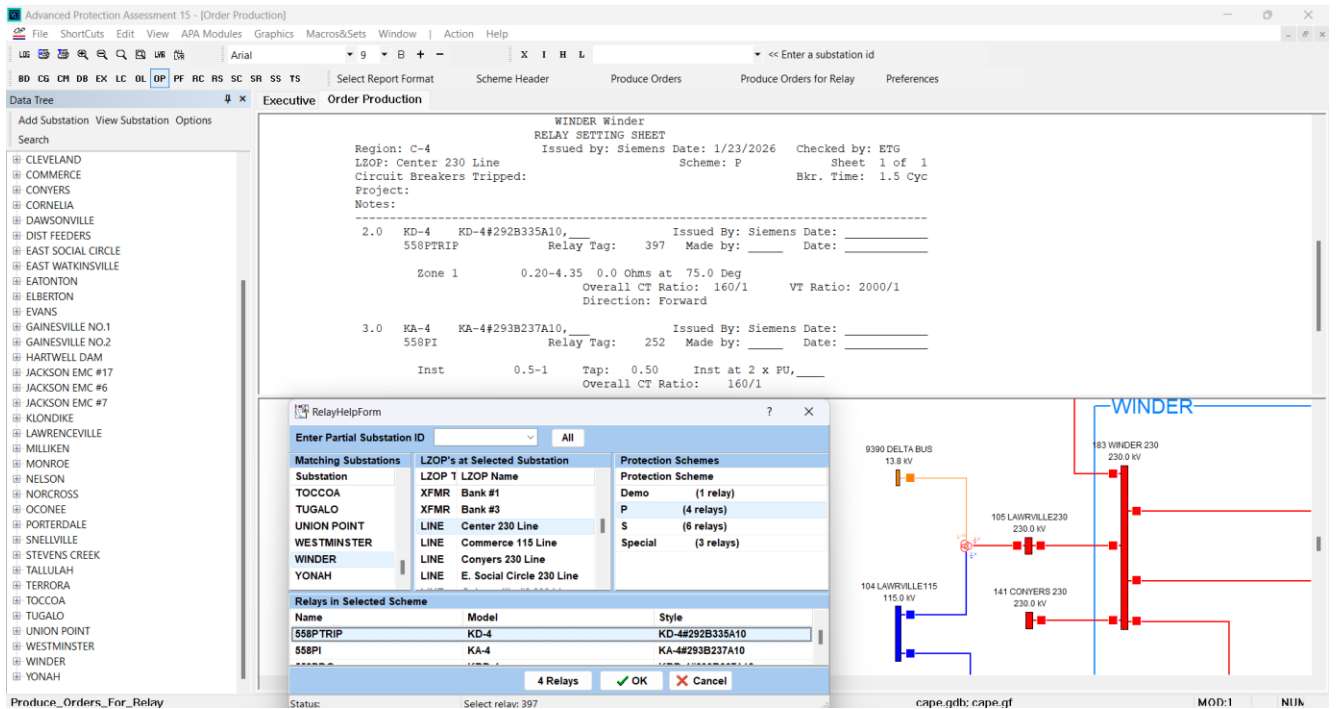


Figure 2: Select relays for order production reports using Advanced Protection Assessment's standard Data Tree or intuitive, top-down search forms. Order Production retrieves the relay settings from the database and reports them on screen or for printing.

Features

- Quick, intuitive relay selection
- Interactive entry of standard header information
- Variety of formats for data-driven reports
- Additional comprehensive relay setting report from within Database Editor

Published by

Siemens AG
Smart Infrastructure
Grid Software

Siemens Technopark
Humboldtstr. 64
90459 Nuremberg, Germany

For the U.S. published by

Siemens Industry Inc.

3617 Parkway Lane
Peachtree Corners, GA 30092
United States

For more information, please contact: Gridscale-X-APA-Contact.si@siemens.com

Article No. SIDG-T10039-00-7600 – Advanced Protection Assessment – Order Production Module

© Siemens 2026

Subject to changes and errors. The information given in this document only contains general descriptions and/or performance features which may not always specifically reflect those described, or which may undergo modification in the course of further development of the products. The requested performance features are binding only when they are expressly agreed upon in the concluded contract