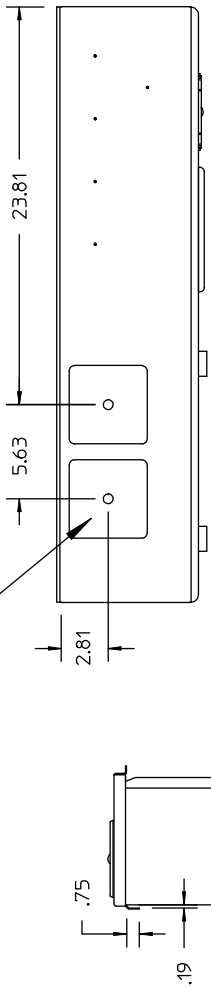


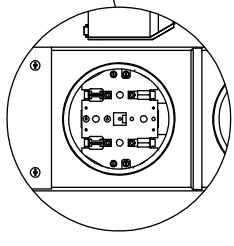
IF HUB IS REQUIRED THE CATALOG NOS. LISTED BELOW MAY BE USED

3".....S56856-2
 3-1/2".....S56857-2
 4".....S56858-2
 Cover Plate.....S56933

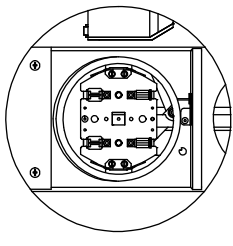
REMOVABLE HUB PLATE COVERING GASKETLESS HD TYPE HUB OPENING (INTERIOR RETAINING CHANNEL TYPE FOR MAX 4" CONDUIT)
 (2) PLACES



MOUNTING CHANNEL DETAIL

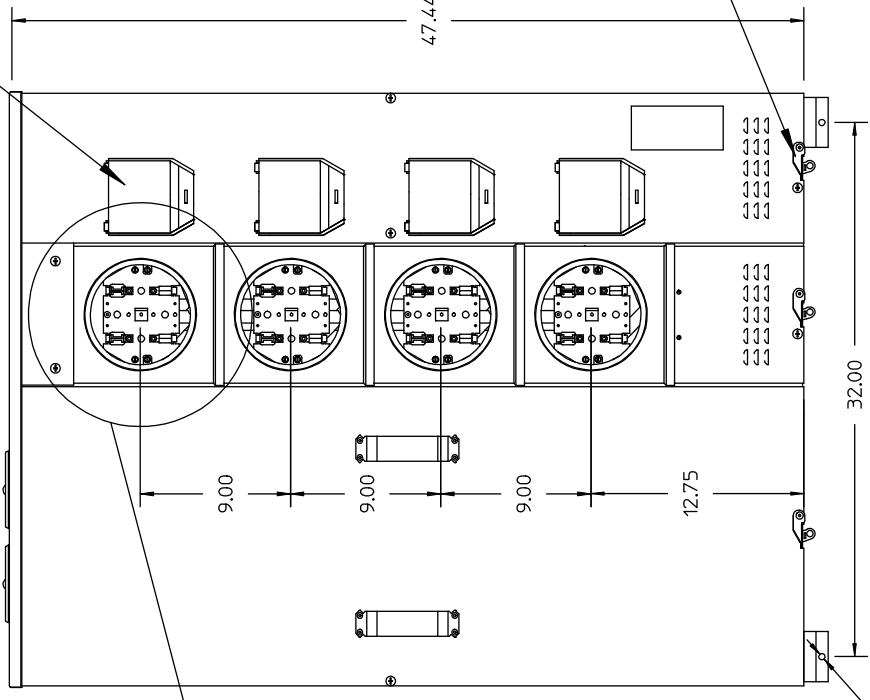


RING STYLE METER SOCKET COVER (INCLUDES ALUMINUM SNAP SEALING RING)



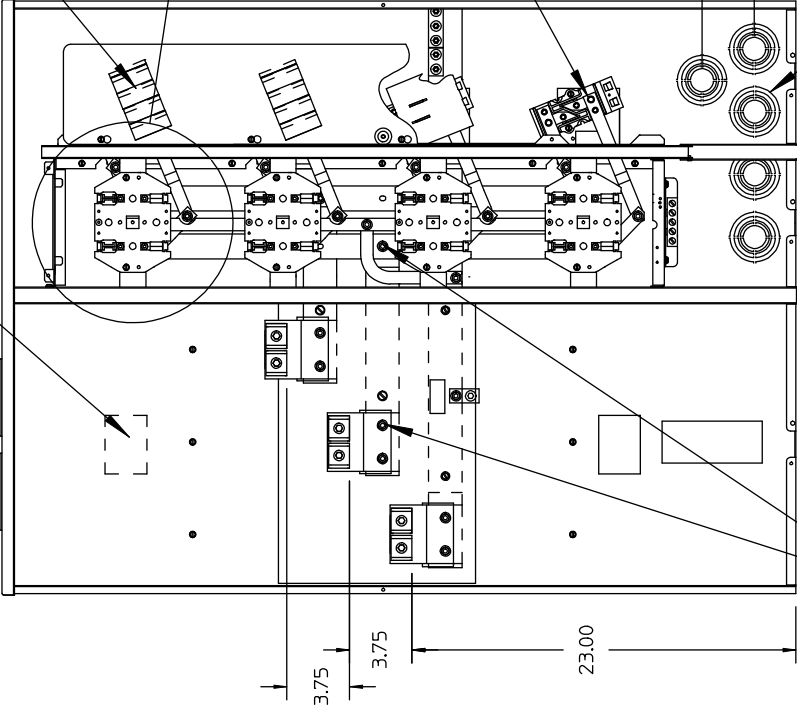
RINGLESS STYLE METER SOCKET COVER WITH BARREL LOCK PROVISIONS (SUPPLIED WITH STAINLESS STEEL LATCH & HASP WITH PROVISIONS FOR PADLOCKING)

TENANT BREAKER COVERS (PADLOCKABLE)



STAINLESS STEEL ROTARY LATCH

SEE NOTE #6

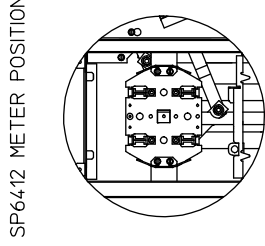
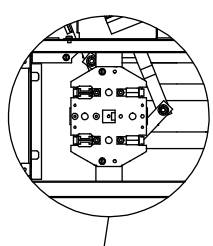
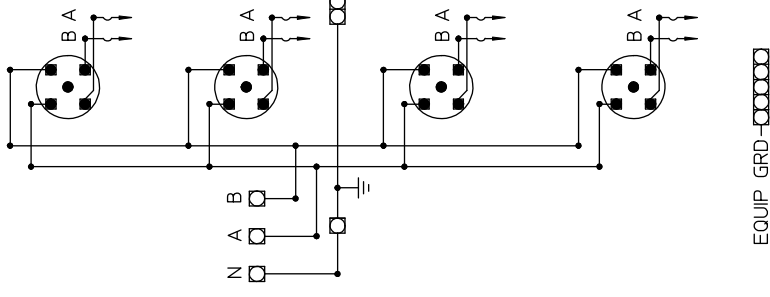


FRONT VIEW WITH COVERS REMOVED

BOLTED MAIN CONNECTION

2.5", 2", 1.5", 1.25", & 1" KO'S (5) PLACES

METER SOCKET COVER	NO. OF JAWS	FACTORY INSTALLED BYPASS	MAIN BUS RATING	BRANCH RATING	NO. OF POSITIONS	CATALOG NUMBER	SEMI-FLUSH MOUNTING KIT NO.	120/240VAC, 1Ø 3 WIRE OR 208Y/240VAC, 1Ø 3 WIRE (5TH JAW REQUIRED)		EUSERC STUD KIT	LINE LUG WIRE SIZES (AWG/KCMIL)		NEUTRAL & SERVICE GROUND	EQUIPMENT GROUNDING
								NO. OF INSTALLED BYPASS	BRANCH RATING		NO. OF POSITIONS	CATALOG NUMBER		
RING-TYPE	4	NONE	600A	200A	4	SP6412	MUSP642FK	MUNSK600	(2) #2 - 600 CU-AI	#6 - 250	SEE CIRCUIT BREAKER WIRE SIZE	#6 - 250	#12 - 2/0	
RINGLESS	5	NONE	600A	200A	4	SP6412RJ								



SP6412 METER POSITION
 SP6412RJ METER POSITION
 5TH TERMINAL SUPPLIED UNASSEMBLED

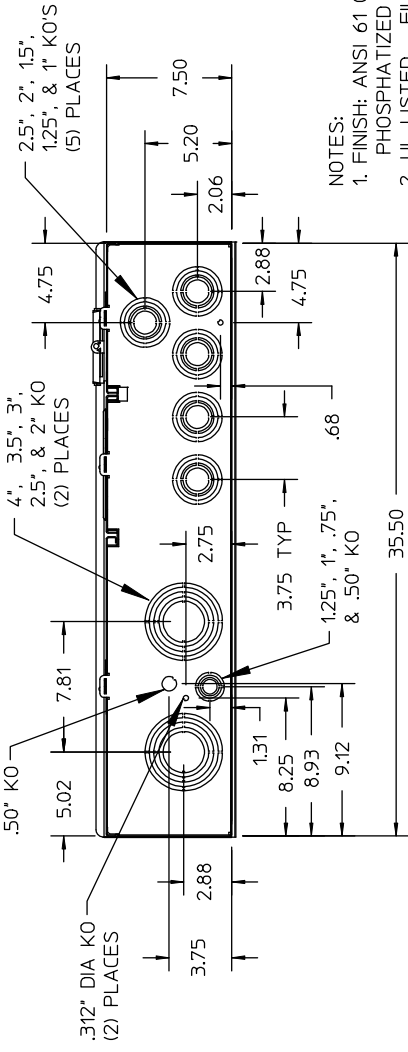
EQUIP GRD

UNLESS OTHERWISE SPECIFIED DIMENSIONS ARE IN INCHES
 TOLERANCES:
 XX .XXX
 XXX .XXX

HOLE DIAMETER
 ANGULAR
 UNDIMENSIONED 90° ANGLES

DWN	BDD	DATE	4/09/2007
CHK		DATE	
APVD		DATE	

- NOTES:
- FINISH: ANSI 61 GRAY BAKED POWDER COAT PAINT OVER G-90 GALVANIZED, PHOSPHATIZED STEEL
 - UL LISTED - FILE E10703
 - SUITABLE ONLY FOR USE AS SERVICE EQUIPMENT
 - SHORT CIRCUIT CURRENT RATING OF METER CENTER IS EQUAL TO THE RATING OF THE LOWEST INSTALLED TENANT SERVICE DISCONNECT.
 - MAIN CONNECTION POINTS RIGIDLY BOLTED WITH BOLT THAT HAS A MINIMUM CONICAL/SRING WASHER TO OR GREATER THAN BUS THICKNESS WITH A CONICAL/SRING WASHER AND HEX NUT.
 - ON "RJ" SUFFIX ENCLOSURES IDENTIFICATION LABEL AND INSTALLATION LABEL FOR INSTALLING 5TH TERMINAL ATTACHED AT THESE LOCATIONS.



-CONFIDENTIAL-PROPERTY OF
 Siemens Energy & Automation, Inc.
 Residential Products Division

UNI-PAK/ALL-IN-ONE METERING EQUIPMENT
 NEMA TYPE 3R ENCLOSURE
 600A MAXIMUM TENANT CIRCUIT BREAKERS

SIZE	ISSUE RELEASE NO.	DWG NO.	SP6412X	REV
B				
SCALE	DO NOT SCALE DRAWING	SHEET	1 OF 1	