



**SIEMENS**  
*Ingenuity for life*

## Remote Learning@SITRAIN

The new freedom in learning:  
Digital. Worldwide. Certified.

[siemens.com/sitrain-remote-learning](https://www.siemens.com/sitrain-remote-learning)



Remote Learning@SITRAIN

## Expert knowledge for all – via remote access

Industry is subject to rapid developments that are being further accelerated by digitization. Today's technologies are so complex that continuing education and regular training on training devices are essential in order to remain up to date.

This trend also makes it necessary to rethink learning. New training methods are needed that are flexibly applicable worldwide and at the same time make it possible to train on industrial products and systems directly, under the guidance of experts.

That's why we supplemented our SITRAIN – Training for Industry with Remote Learning@SITRAIN. This multifaceted training program covers the entire range of Siemens Industry and enables our customers and employees to train – remotely as well – on devices like the SIMATIC S7-1500 controller and SIMATIC PCS 7 distributed control system.

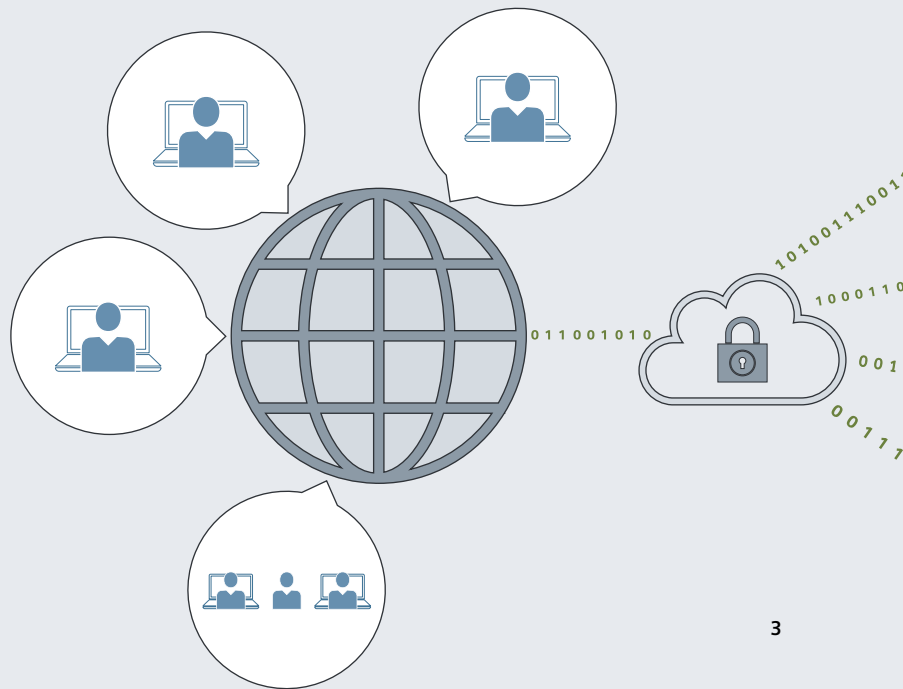
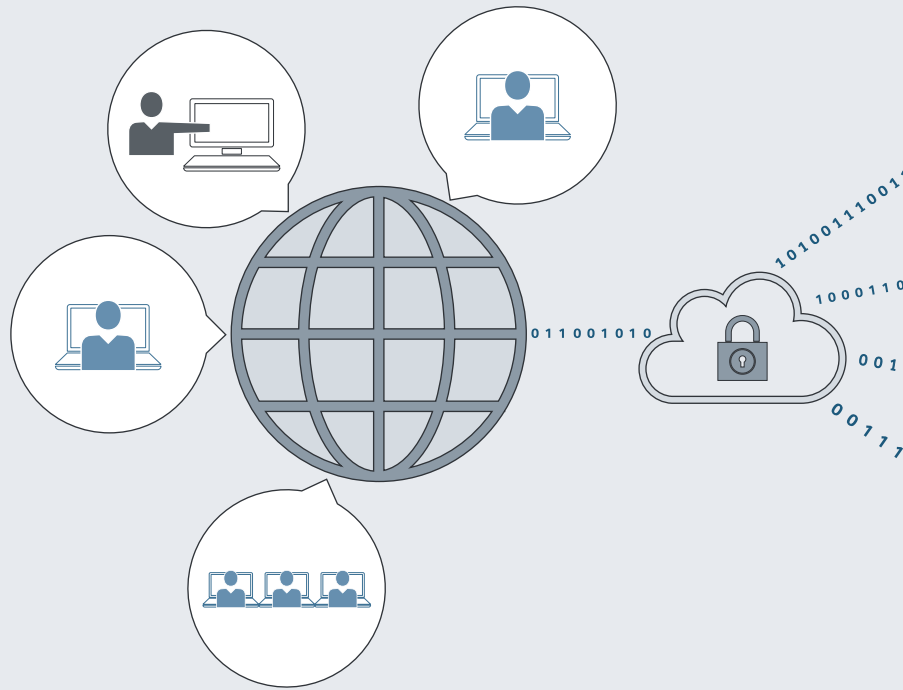
### **Digital. Worldwide. Certified.**

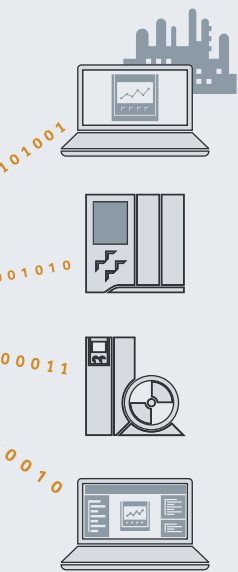
Remote Learning@SITRAIN is the innovative answer to the growing international demand for SITRAIN training courses. This kind of digital knowledge and information transfer makes it possible to attend courses taught by certified instructors and to access exclusive training devices by connecting participants to the trainer and training device remotely. Now anyone can gain expert knowledge directly on a training device!

To this end, SITRAIN is currently offering a comprehensive remote portfolio that is being continuously expanded.

Below you'll find an overview of the learning scenarios available to you from Remote Learning@SITRAIN.

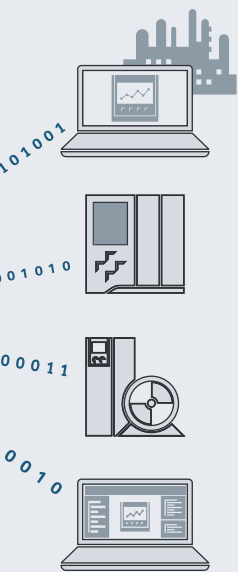
The Remote Learning@SITRAIN  
training options at a glance





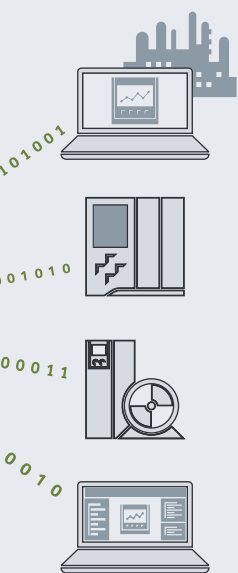
### Classroom training with remote access to training devices and virtual machines

Course participants gather in a training room with the trainer and access training devices located at SITRAIN via remote connection.



### Online instructor-led training with remote access to training devices and virtual machines

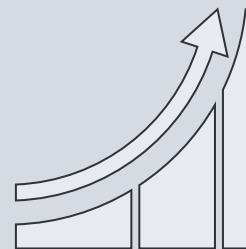
Participants and trainers are in different locations but are connected to one another online. Together they access training devices or virtual machines located at SITRAIN via remote connection.



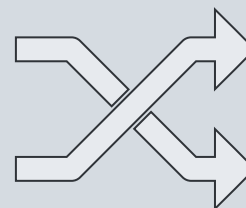
### Online self-paced training with remote access to training devices and virtual machines

This type of training takes place without a trainer. Participants are distributed worldwide and access training devices or virtual machines located at SITRAIN via a remote connection at various scheduled times.

## Benefits



Improve performance



Increase flexibility



Reduce costs



Certified experts



## Take advantage of Remote Learning@SITRAIN

### Expert knowledge via remote access

With Remote Learning@SITRAIN, you can participate in courses remotely from anywhere in the world. Expert knowledge is now more accessible than ever.

### Learn digitally

Digital knowledge and information transfer enables the fast and uncomplicated acquisition of knowledge. This method is ideal for software training and refresher courses.

### Independent of on-site training devices

Remote access makes it possible to offer courses on special training devices that would otherwise be extremely expensive to ship, are site-dependent, or are insufficiently available due to their limited numbers. This offering is especially beneficial for countries with restricted transport regulations.

### Reduce costs

Course participants have no travel costs to pay. And because the courses are taught on training equipment that doesn't have to be available on site, there are also no shipping costs for training devices.

**Find out more:**

**[siemens.com/sitrain-remote-learning](http://siemens.com/sitrain-remote-learning)**

**Experience Remote Learning@SITRAIN  
as part of the SITRAIN offering and take  
advantage of practical training from the  
manufacturer and directly applicable skills.**

**Published by  
Siemens AG 2016**

Digital Factory  
Information and Training Center  
Customer Consulting  
90475 Nuernberg, Germany  
Phone: +49 (0) 911 895-7575  
Fax: +49 (0) 911 895-7576

Austria:  
Phone: +43 (0) 51707-23797  
Fax: +43 (0) 51707-59192

Switzerland:  
Phone: +41 (0) 848 822-800  
Fax: +41 (0) 848 822-801

Article No.: DFCS-B10098-00-7600  
Printed in Germany  
Dispo 46332  
GuB/1748 WS 10162.0

Subject to changes and errors.  
The information given in this document only contains  
general descriptions and/or performance features  
which may not always specifically reflect those  
described, or which may undergo modification in  
the course of further development of the products.  
The requested performance features are binding  
only when they are expressly agreed upon in the  
concluded contract.

SITRAIN is a registered trademark of Siemens AG.  
All other designations in this document may represent  
trademarks whose use by third parties for their own  
purposes may violate the proprietary rights of the  
owner.

