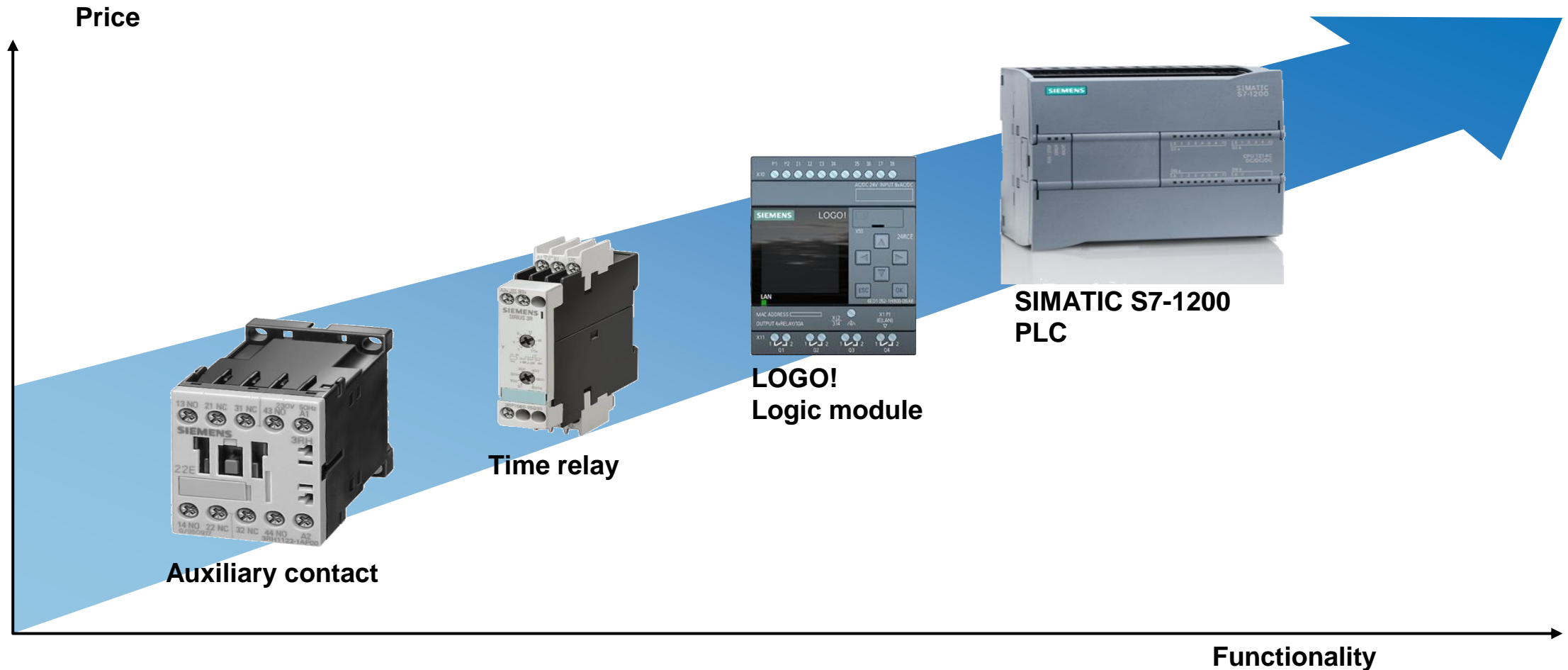


LOGO! V8.3 Stay in Touch Webinar

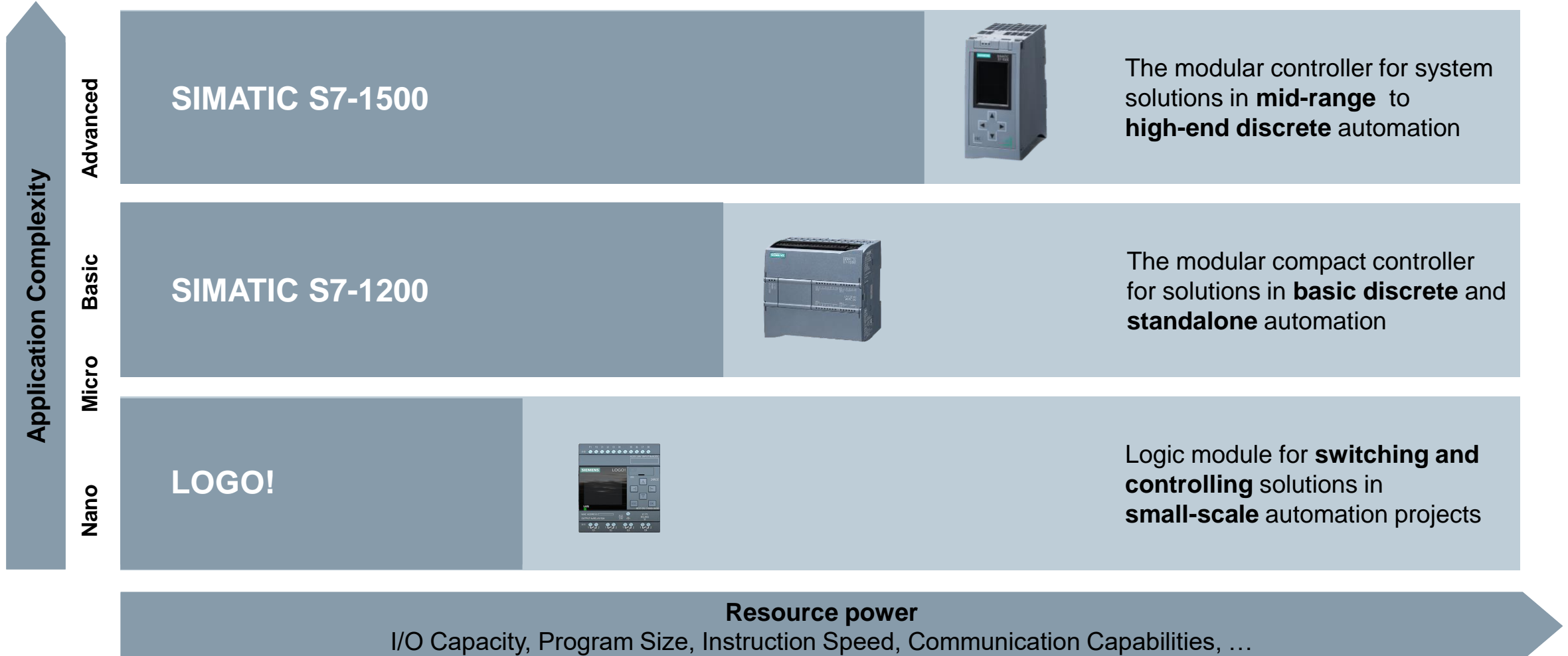
LOGO! Positioning

Closing the gap between auxiliary contacts and PLC

SIEMENS
Ingenuity for life



Modular controller positioning



LOGO! Highlights



Simple



- Intuitive useable software for Windows, Linux and Mac
- Useable without detailed training

Space-saving



- Replaces several conventional switching-devices
- Smaller switchboards
- Less wiring



Modular



- Optimised configuration
- Expandable as needed in future
- Available for all usual voltages
- Communication modules for GPS, SMS and KNX systems

Economical



- Short start-up time
- Less stock-keeping
- Little training efforts

LOGO! Highlights – Your benefits



All LOGO! devices include communication via Ethernet.

- LOGO! ⇔ LOGO!
- LOGO! ⇔ SIMATIC HMI
- LOGO! ⇔ SIMATIC S7 PLC
- LOGO! ⇔ Modbus TCP/IP
- LOGO! => PC (Access Tool)
- Time synchronization
- Cloud Connectivity

Display

- Message interface
- Adjustment of parameters
- Allows simple program changes



Temperature range
-20 ° C to 55 ° C

Integrated webserver

- Design websites with own images and icons - no HTML 5 knowledge necessary
- LOGO! or LOGO! TDE message text display
- LOGO! TDE with use of function keys

Micro SD-Card slot

- Easy uploading and downloading of programs to the LOGO!
- Usable for data-logging
- Storing LWE projects
- Know-How protection

LOGO! 8 Portfolio

SIEMENS
Ingenuity for life

LOGO! 8 base modules
Variants with and without display
LOGO! 8 expansion modules
Digital IOs and Analog IOs



LOGO! CSM Switch for junction box
LOGO! CMR 2040 for communication via
LTE, UMTS, GPS and Time synchronisation



LOGO! Power
Variants for DC 5 / 12 / 15
/ 24V



LOGO! TDE
External text display and
built in function keys



LOGO! CMK2000
For integration into KNX
building bus systems



LOGO! Technical Overview



12/24 RCE

24 CE

24 RCE

230 RCE



12/24 RCE (o)

24 CE(o)

24 RCE(o)

230 RCE(o)



- DM16 24
- DM16 24R
- DM16230R

- DM8 12,24R
- DM8 24/24R
- DM8 230R

AM2

AM2 RTD

AM2 AQ



TDE

The hardware

- 4 base modules with and without display, all with ethernet port
- 8 inputs 4 outputs, expandable
- Maximum configuration per
 - Single LOGO! configuration: 24 DI, 20 DO, 8 AI and 8 AO
 - In network-operation: 88 DI, 84 DO, 40 AI, 24 AO
- Variants for all common voltages:
 - 12/24 V DC, relays-outputs 10A, 4 inputs usable as 0-10V AI
 - 24 V DC, transistor-outputs, 4 inputs usable as 0-10V AI
 - 24 V AC DC, relays-outputs 10 A
 - 115 -240 V ACDC, relays-outputs 10A

LOGO! 8 expansion modules

- Digital:
 - DM8 with 4 DI/ 4 DO
 - DM 16 with 8 DI/ 8 DO (various voltages)
- Analog:
 - AM2 with 2 AI 0-10V,0/4-20mA
 - AM2 RTD with 2 AI for PT100/ PT1000 temperature sensors
 - AM2 AQ with 2 AO 0-10V,0/4-20mA

LOGO! Display and LOGO! TDE

- 6 lines each with 16 characters (20 characters at TDE)
- 3 Background colours for highlighting different messages
- TDE: 2 Ethernet Interfaces, 4 function keys

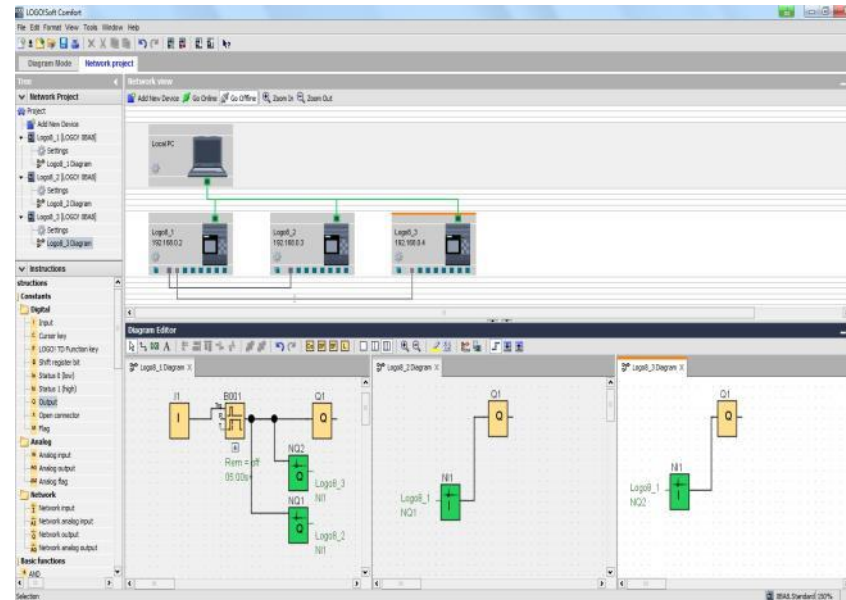
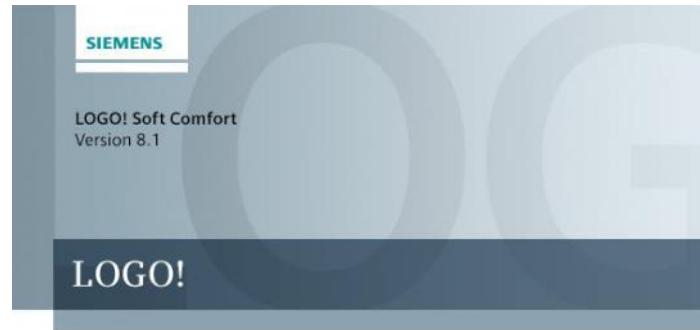
LOGO! Highlights - Software Innovations



LOGO! Soft Comfort V8.3



- Simple programming with drag and drop
- Program creation in Function Block Diagram (FBD) and Ladder Diagram (LAD)
- Automatic setting of temporary IP-addresses
- Data Logging
- User Defined Functions (UDF)
- Cloud Connection
- Simulation mode and Online Test mode



Single diagram mode



- Single LOGO! in the standard view

Network mode



- 16 participants in the network view including S7 and Modbus users
- 3 windows for individual programs
- All single programs in one project file

Free demo software



- All functions useable except uploading and downloading of programs from and to LOGO!

Free resources

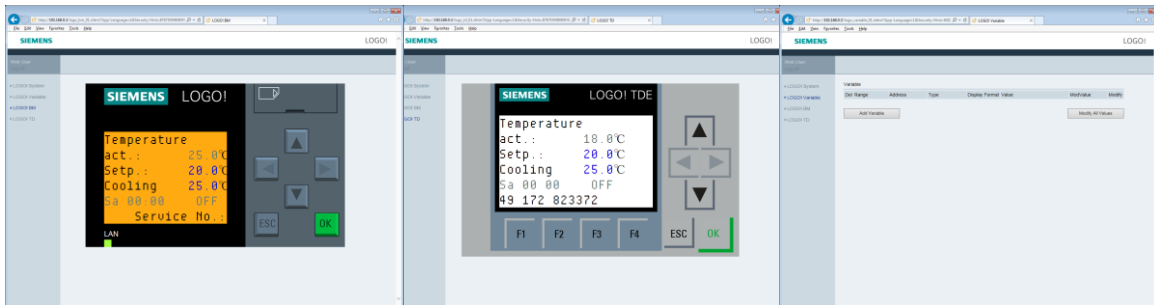


- Free Web-based training
- Large collection of pre-written application examples

LOGO! Integrated webserver options

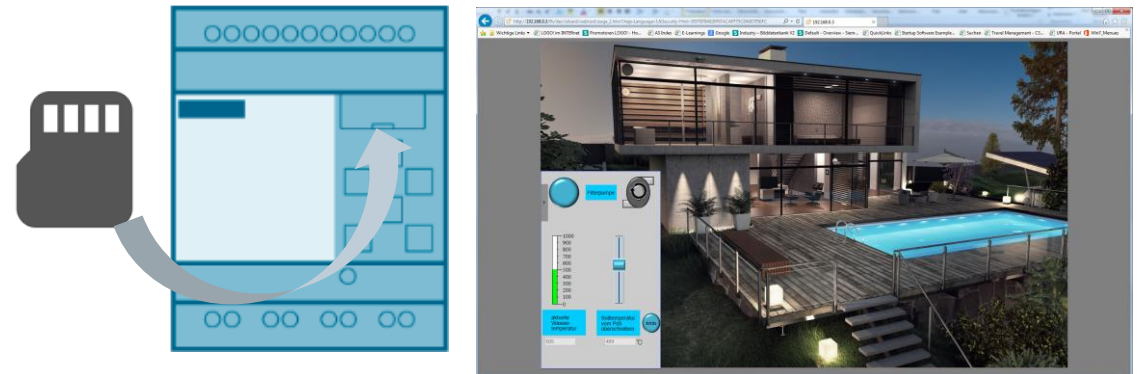
Standard Webserver:

- Integrated since LOGO! 8
- Displaying:
 - LOGO! device
 - LOGO! TDE with function buttons
 - Variable table



Customised Webserver:

- Creating websites using the free LOGO! Web Editor (LWE) tool (no additional knowledge necessary)
- Projects are editable by using HTML 5
- LOGO! Basic Module needs a Micro-SD card for saving the customised website on the local webserver

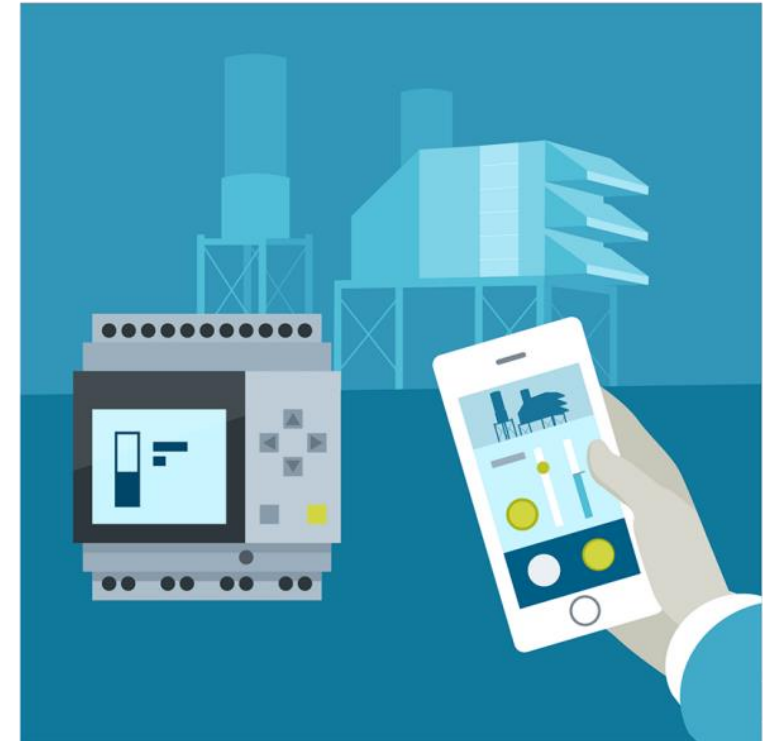
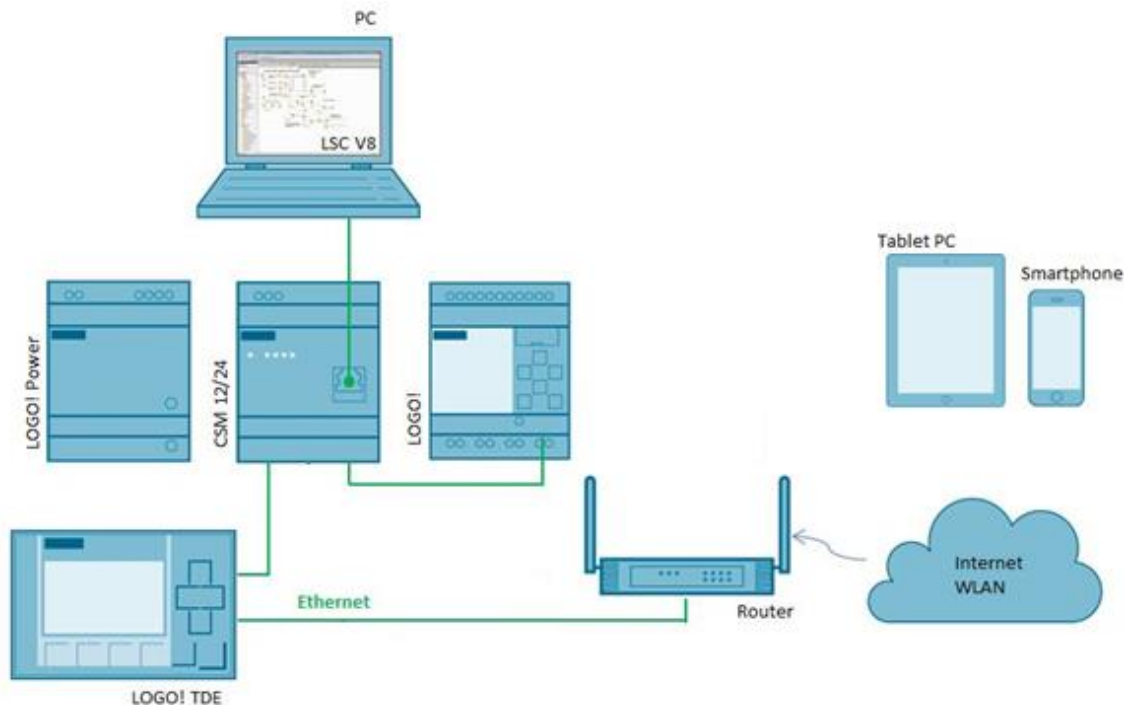


Both webservers use the same password and must be enabled in LOGO! Soft Comfort „Tools – Transfer – Access control“

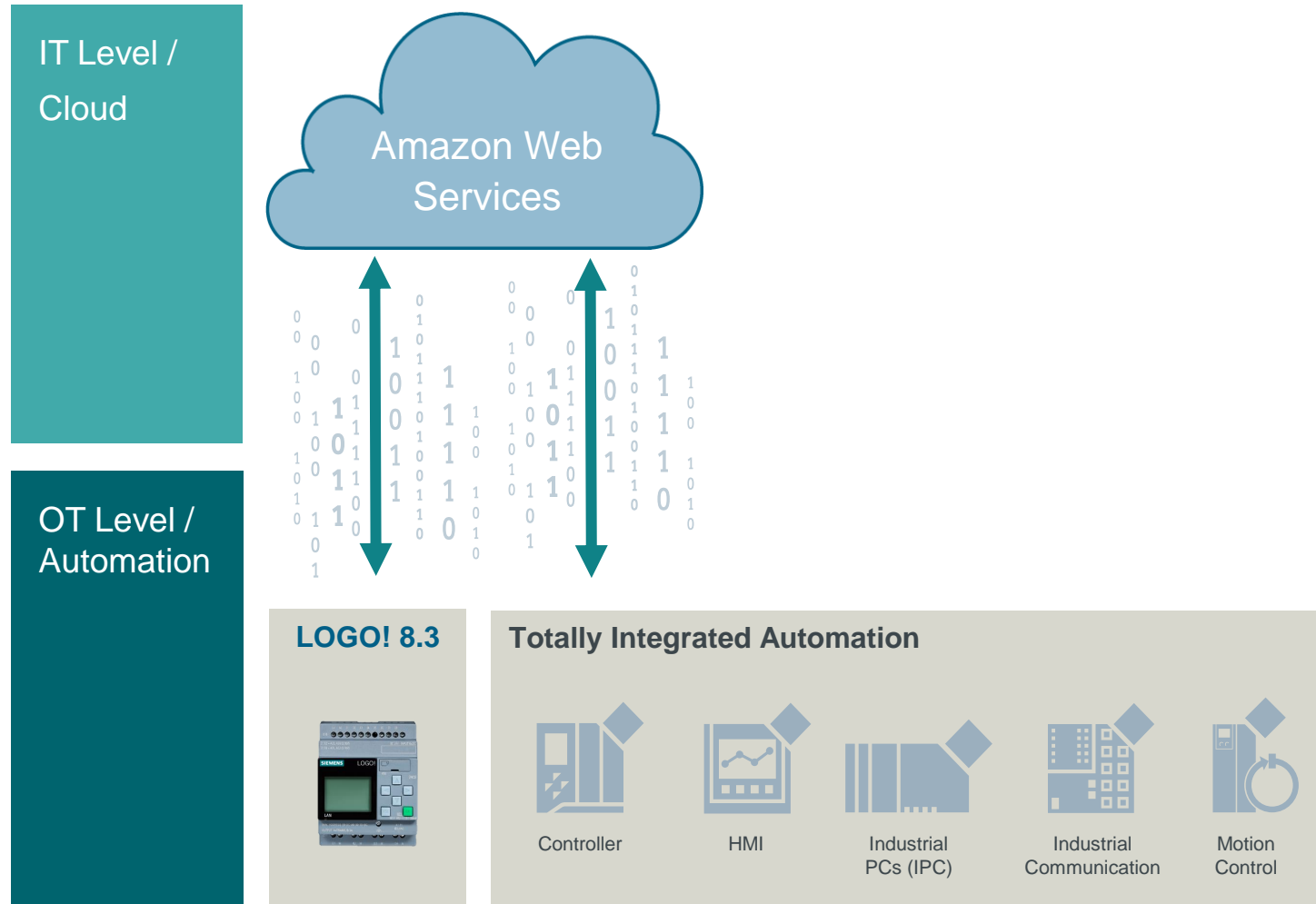
LOGO! Web Editor

The LWE allows to create customised websites, which are used to control and monitor LOGO! automated tasks:

- Design your own pages with your own pictures and icons with the free LWE Tool
- Individual user interfaces
- Controllable by any terminal device (just browser necessary)
 - Customizable resolution (according to your device)
- Location independent controlling (e.g. via smartphone)



LOGO! 8.3 – System overview new features



Cloud



- Use of additional Cloud-Services (Messaging, alarming, visualisation, data analysis, ...)
- Visualisation of „Cloud-Data“ by using LOGO! Web Editor V1.1 (Dashboard) or Cloud-Services
- Flexible user management

Security



- Webserver (HTTPS)
- Engineering (communication via TLS)
- Cloud Connection (MQTT via TLS)

Hardware



- Cloud-communication possible with LOGO! 8.3 Base Module
- Native communication via MQTT

LOGO! 8.3 – Highlights



IT/Cloud-
level

OT/
Automation
level



Functions
Cloud <ul style="list-style-type: none">• Use of LOGO! Web Editor V1.1 project for cloud data visualization• Upload LOGO! Web Editor V1.1 to cloud• Flexible user management• Additional cloud services
Usability <ul style="list-style-type: none">• Easy configuration in LOGO! Soft Comfort 8.3• LOGO! Web Editor „well known by users“
Hardware <ul style="list-style-type: none">• Cloud communication and configuration part of LOGO! Soft Comfort 8.3 and integrated in any LOGO! 8.3 Base Module

Benefits
<ul style="list-style-type: none">• Easy to configure and well known by our customers• Create/modify visualisation anywhere at any time
<ul style="list-style-type: none">• Wizard guided cloud connection setup• LOGO! typical usability• Improved visualization by using the existing LOGO! Web Editor knowledge
<ul style="list-style-type: none">• LOGO!, LOGO! Soft Comfort and LOGO! Web Editor go Cloud• Change of base module only, no additional expansion module necessary

LOGO! 8.3 – System overview new possibilities

IT/Cloud-
level



OT/
Automation
level

LOGO! 8.3



IT-Specialist

- Use of cloud services (Messaging, Alarming, visualization, data analysis, ...)
- Flexible user management
- and much more



IT-Beginner

- Visualization of „Cloud-Data“ by using LOGO! Web Editor V1.1 (Dashboard)
- LOGO! Web Editor V1.0 „well known by users“
- Flexible user management of cloud data



Benefits

- Cloud functionality for everyone
- In each LOGO! 8.3 Base Module integrated
- Use of existing IT infrastructure



Use cases

Home and Building Automation:

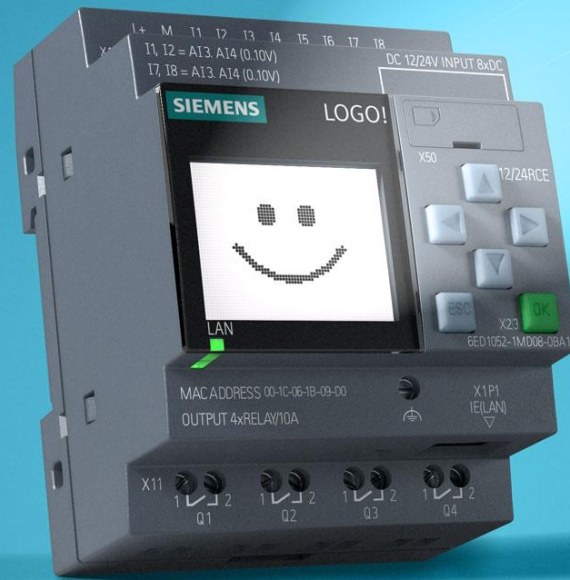
- Light control, ventilation control
- Sprinkler systems, swimming pools
- Door and gate access control
- Bells (e.g. school, church)

Distributed Systems:

- Street lights
- Irrigation plants
- Mobile Silos
- Vending machines
- Freezers

Backend Systems:

- Energy monitoring / analysis
- Smart-Grid in infrastructure
- PV Energy storage (Smart Battery)
- Devices → Smart Devices
- Prefabricators
- Machine Sharing



Further information about LOGO! 8.3

There will be no possibility to upgrade older Base Modules by Firmware update


Prices will not be changed

Full compatibility to all LOGO! 8 expansion modules

The order number of LOGO! Soft Comfort and Starter Kits will not be changed

Product overview



	LOGO! 8.3	LOGO!TDE	Starterkits
With Display	<ul style="list-style-type: none">• LOGO! 24CE 6ED1052-1CC08-0BA1• LOGO! 12/24RCE 6ED1052-1MD08-0BA1• LOGO! 24RCE 6ED1052-1HB08-0BA1• LOGO!230 RCE 6ED1052-1FB08-0BA1	LOGO!TDE 6ED1055-1MH08-0BA1 	<ul style="list-style-type: none">• LOGO! Starter Kit 6ED1057-3BA03-0AA8• LOGO! 8.2 Starter Kit 12/24RCE 6ED1057-3BA01-0AA8• LOGO! 8.2 TDE Starter Kit 6ED1057-3BA11-0AA8• LOGO! 8 12 /24RCE + KP300 Basic Starter Kit 6AV2132-0HA00-0AA1• LOGO! 8 12 /24RCE + KTP400 Basic Starter Kit 6AV2132-0KA00-0AA1• LOGO! 8 12 /24RCE + KTP700 Basic Starter Kit 6AV2132-3GB00-0AA1
Without Display	<ul style="list-style-type: none">• LOGO! 24CE 6ED1052-2CC08-0BA1• LOGO! 12/24RCE 6ED1052-2MD08-0BA1• LOGO! 24RCE 6ED1052-2HB08-0BA1• LOGO!230 RCE 6ED1052-2FB08-0BA1	The order numbers of Base Modules and TDE will change , the order numbers of Starter kits, Software and other modules will NOT change .	

LOGO! Start immediately



More information under:

[siemens.com/logo](https://www.siemens.com/logo)

Free demo software for download:

<https://support.industry.siemens.com/cs/bh/en/view/109782616>

LOGO! 8.3 Software Upgrade:

<https://support.industry.siemens.com/cs/bh/en/view/109783154>

Free web-based training:

[siemens.com/logo-wbt](https://www.siemens.com/logo-wbt)

Range of application examples:

[siemens.com/logo-application-examples](https://www.siemens.com/logo-application-examples)

Starter kits for you:

[siemens.com/logo-starterkit](https://www.siemens.com/logo-starterkit)



LOGO! Soft Comfort – Cloud Connection

SIEMENS
Ingenuity for life



LOGO! Web Editor – Cloud WebApp

SIEMENS
Ingenuity for life



Thank you for your attention

SIEMENS
Ingenuity for life



Natalie Kouby

LOGO! Product Manager

natalie.kouby@siemens.com

siemens.com/logo