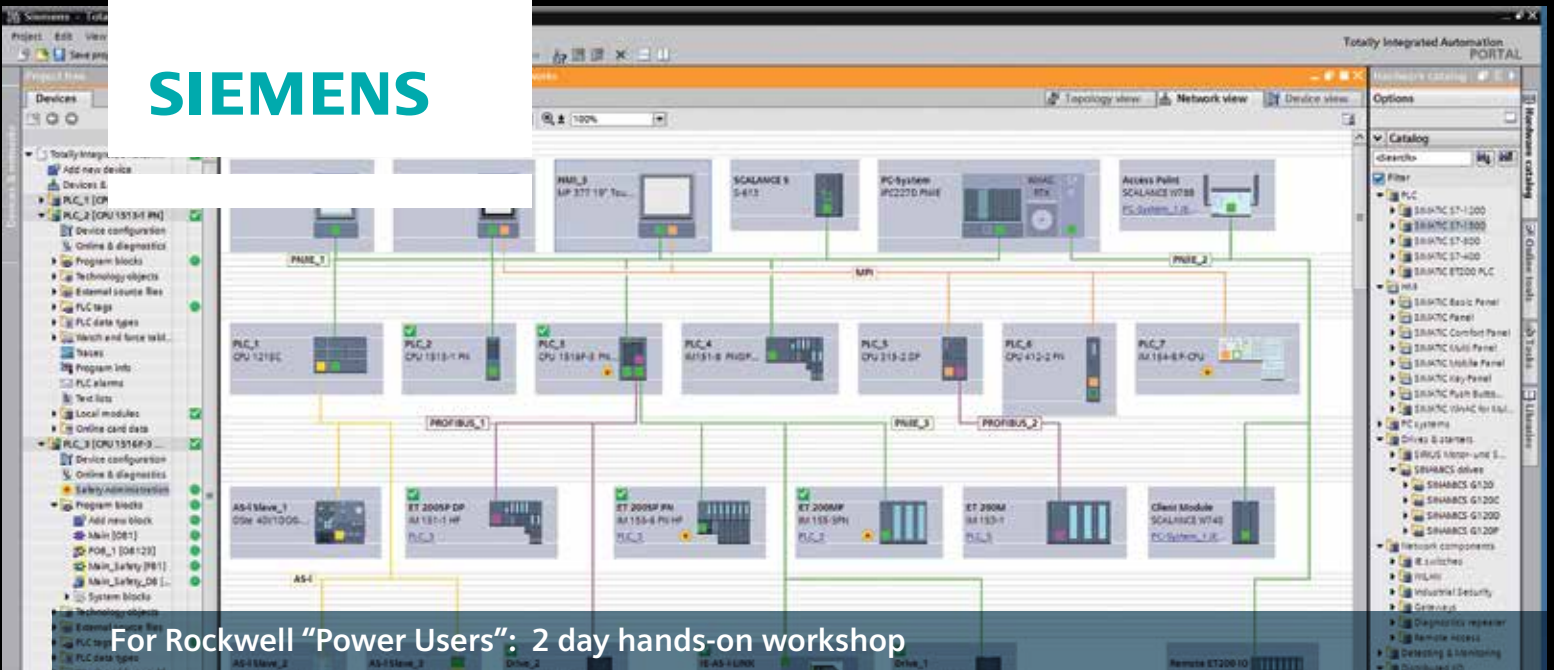


# SIEMENS



For Rockwell "Power Users": 2 day hands-on workshop

## How TIA Portal compares to RSLogix5000

**A single engineering framework for controllers, distributed I/O, HMI, drives, motion control and motor management – that's the TIA Portal.**

- **Integrated "no programming" system diagnostics**, automatically generated during device configuration
- **One common tag database** for less mistakes
- Ability to **create custom libraries** to be shared across your corporate servers for easy creation of company standardization for projects
- An **overall Project Management tool** allows for complete system (multiple controllers, HMIs, networks, etc.) to be programmed, monitored, saved and stored all in one software package
- **Easy to use**, intuitive system functions for less clicks and faster engineering: Easy implementation wizards, drag and drop between editors, and more!
- **Additional time-saving functions** like online/offline comparisons, pictorial system view with online diagnostics, no PC-required Trace functions, and the ability to make code modifications while in "run" state without stopping the PLC

**The TIA Portal reduces your engineering time by up to 30%, allowing you to beat deadlines, achieve flexible manufacturing, and minimize downtime.**

### Who should attend?

People who design and program systems with extensive Rockwell programming experience

### What the TIA Portal can do for you?

- **Increase your system visibility** with a common database
- **Reduce your engineering time** with a single, easy programming tool
- **Reduce your downtime** with "no programming" integrated diagnostics

### What will you learn?

- TIA Portal vs. Studio 5000 layout, programming aspects and structured environment similarities/differences
- How to apply your current Studio 5000 programming knowledge to TIA Portal
- How to start a successful TIA Portal project – leave with this on a flash drive
- How easy the TIA Portal is to use, program and understand
- How to use advanced TIA Portal functions like integrated "no programming" diagnostics

Contact your local Siemens Sales Representative for a class near you!

Digital Factory

## Class Agenda

	Day 1	Day 2
8:30am - 9:00am		Check-in / Breakfast
9:00am - 12:00pm		Hands-on Workshop
12:00pm - 1:00pm		Lunch
1:00pm - 5:00pm		Hands-on Workshop

## Workshop Topics

- Hardware
- Software
- Projects
- Tags
- Online edits/downloading
- Programs (routines, AOIs, function, function blocks)
- Reference projects
- Libraries
- HMI development
- Drives
- Diagnostics
- Trending
- PLC to PLC communication
- Q&A



[Take a guided video tour of the TIA Portal](#)

## See what others are saying who attended this workshop...

**“Excellent comparison of Siemens and Rockwell systems. Instructor is very knowledgeable!”**

**“Great overview. From my Rockwell background, I was able to understand a lot of TIA concepts.”**

**“The basics of the class – explaining Siemens based on Rockwell experience – was very helpful to me.”**

**“This is an excellent class for first time users to Siemens!”**



Siemens Industry, Inc.  
3333 Old Milton Parkway  
Alpharetta, GA 30005

1-800-241-4455  
info.us@siemens.com

[usa.siemens.com/tia-portal](http://usa.siemens.com/tia-portal)

Subject to change without prior notice.  
Order No: AMFL-R2TIA-0715  
All rights reserved.  
Printed in USA  
©2015 Siemens Industry, Inc.

The information provided in this brochure contains merely general descriptions or characteristics of performance which in case of actual use do not always apply as described or which may change as a result of further development of the products. An obligation to provide the respective characteristics shall only exist if expressly agreed in the terms of contract.

All product designations may be trademarks or product names of Siemens AG or supplier companies whose use by third parties for their own purposes could violate the rights of the owners.