

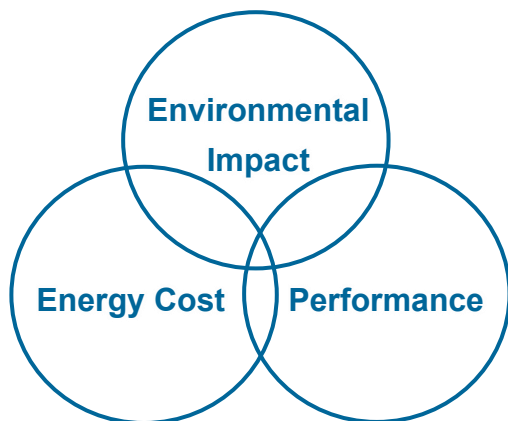
ELECTRIFICATION X

Sustainability/Energy Management

First step towards efficient processes

The incessant growth in electricity demand, increased shared of renewables, electrification, infrastructure aging and IoTization are key challenges for smooth energy transition.

For continuous improvement, a strategic approach is required to maintain a balance between production performance, cost and environmental impact. This demands transparency on all aforementioned factors as the first step.



Improve energy efficiency – proactive approach












Sustainability/Energy Management in Electrification X addresses a wide range of audience from management to shop floor level. From a global energy performance overview to device level data transparency, you can monitor, track, improve and report all key performance indicators.

The module delivers a comprehensive summary of your facility which helps identify potential hotspots for improvement. Simultaneously, you can accelerate your response to anomalies and variance with the help of notifications.

The monitoring and analytics solution offers energy performance evaluation against other business KPIs to further support energy strategy, operation, maintenance and decarbonization roadmap. Added value stems from customizable and timely reporting.

Your benefits

Electrification X – Sustainability/Energy Management is tailored to overcome your challenges and provides competitive advantage with enhanced value around energy efficiency, cost optimization, carbon emission reduction, energy mix optimization & continuous improvement. The following aspects support to scale the magnitude:

-  Scalable, flexible & secure solution
-  24/7 enhanced data transparency & reporting for all global locations (individual as well)
-  Monitoring, tracking & reporting of energy, cost and emission KPIs
-  Saving potential and anomalies identification
-  Generate accurate insights into energy drivers and improve forecasting
-  Accelerated approach to managing tariff & peak
-  Optimum use of renewable energy
-  Empower data-driven decision-making to optimize investments and achieve sustainability goals effectively
-  Optimized energy strategy & roadmap
-  Increased employee awareness and timely access to relevant reports
-  Enable continuous improvement

Functions at a glance

Energy Overview & Cost Analysis

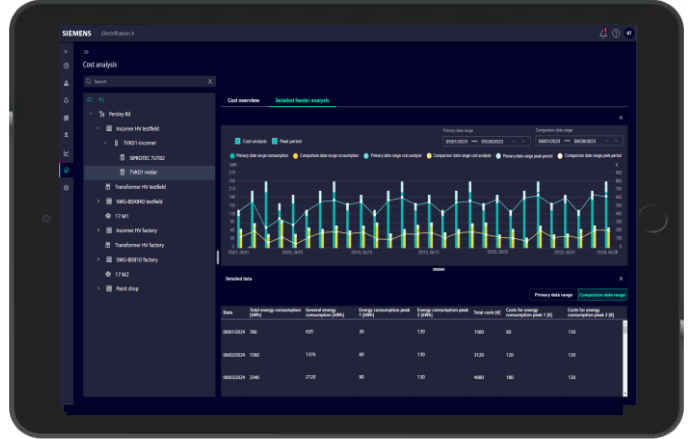
- Geographical location view of overall and individual energy performance.
- Energy cost overview w.r.t source mix & cost centers.
- Notifications & alarm against anomalies.



Energy Performance Overview

Energy Benchmarking

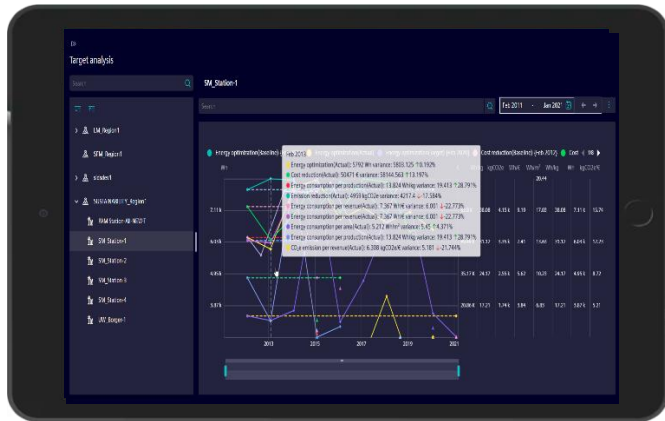
- Customizable asset analysis within & across peer facilities.
- User specific visualization of top contributors and meter data (including virtual meter, electricity meters and flowmeters).
- Exportable energy and unit price details at each location.



Data Comparison Across Location(s)

Energy Target Setting & Customizable Roadmap

- Track progress towards energy and decarbonization goals by plotting energy, cost, emissions or EnPI(s) target(s) across the roadmap.
- Identify gaps, validate initiatives, and support data-driven decisions, enabling timely course correction and sustained impact.



Energy Target Analysis

Energy Analytics & Customizable Reporting

- Use regression model to correlate energy, cost, and emission with influencing, creating accurate baselines for comparison.
- Generate and schedule customizable reports covering energy consumption, cost, emissions, and EnPI(s).



Regression Analysis & Reporting

Published by
Siemens AG

Smart Infrastructure
Electrification & Automation
Mozartstr. 31C
91052 Erlangen, Germany

For more information, please contact Customer Support:
[siemens.com/energy-automation-support-contact](https://www.siemens.com/energy-automation-support-contact)

For the U.S. published by
Siemens Industry Inc.

3617 Parkway Lane
Peachtree Corners, GA 30092
United States