



All Images Siemens AG

Website design made easy

The new web server feature of the latest LOGO! 8 version enables websites to be easily built and customized with no need for HTML skills.

The desire for customizable websites has been expressed ever since LOGO! 8 was launched. With the latest version of the logic module, that wish has been made a reality. Thanks to

the free LOGO! Web Editor tool, users can create custom websites featuring their own images and icons – with no need for any HTML knowledge.



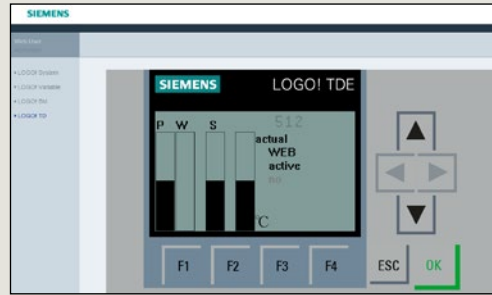


Figure 1

The logic module’s previous web server was based on the message texts in the user program and could additionally use the function keys of the LOGO! TDE external display to control the steps of the process (Figure 1).



Figure 2

Web server functionality has been upgraded with the facility for users to create their own pages. Again, this version requires no HTML skills, and furthermore, Siemens offers a free tool with which users can design LOGO! websites themselves. The tool is included on the current LOGO! Soft Comfort DVD and can also be downloaded from the logic module’s website – allowing anyone to try out their own page designs.

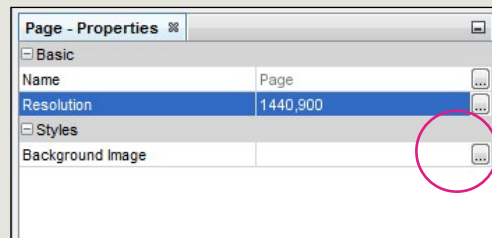


Figure 3

First, extract the LWE (LOGO! Web Editor) tool to your local hard disk; install it – for which you will need administrator rights; and then run it (Figure 2). You can now create a new project, specifying its name and storage location. Right-click on “Page” in the project tree on the left to add a name and additional pages.

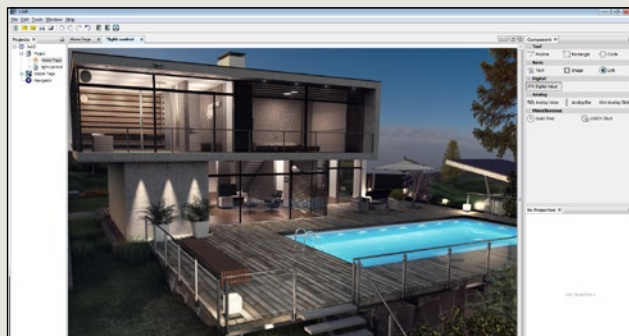


Figure 4

Click within the workspace and in the “Page – Properties” box on the right you can set the resolution (Figure 3). Click on the “Browse” icon to select and apply a background image (Figure 4).

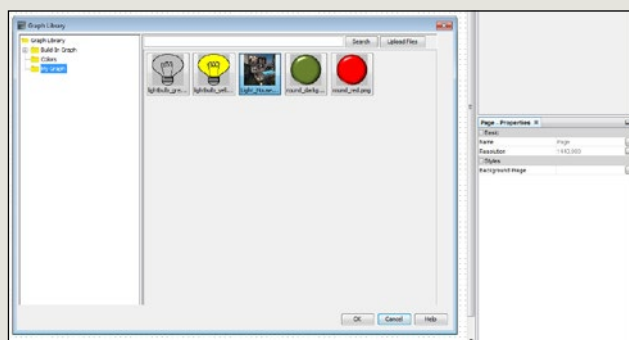


Figure 5

The icon on the far right opens up the Graph Library containing many standard icons. Under “My Graph” (C:\Program Files\lwellwelres\Graph Library) you can include your own images and icons (Figure 5).

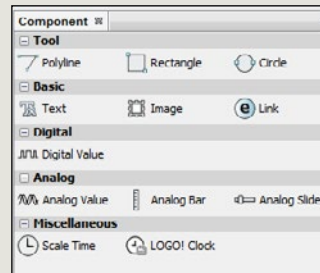


Figure 6

At the top-right of the screen is the “Component” window with the controls (Figure 6).

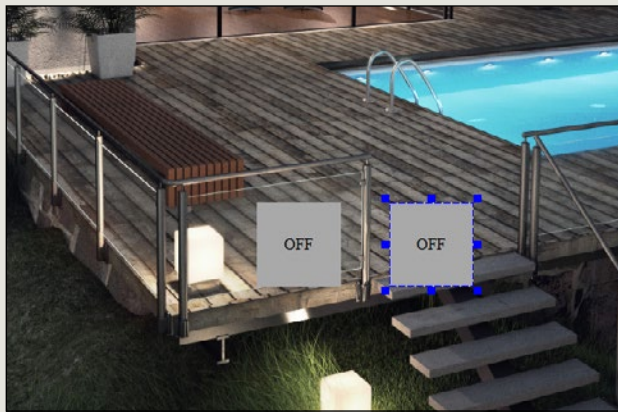


Figure 7

Drag-and-drop the elements you want from there into the workspace (Figure 7).

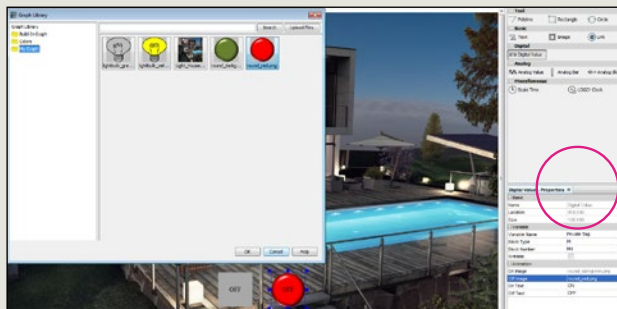


Figure 8

Now insert a switch and a lamp. Both are digital values. For an image of a switch icon, choose a button and link it to a flag capable of receiving text input. This enables you to operate a switching function in the LOGO! program from a mobile device (Figure 8).

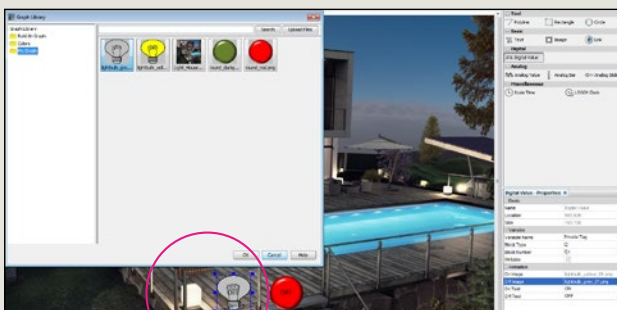


Figure 9

The second digital value is linked to an output Q1, to operate the lamp (Figure 9).

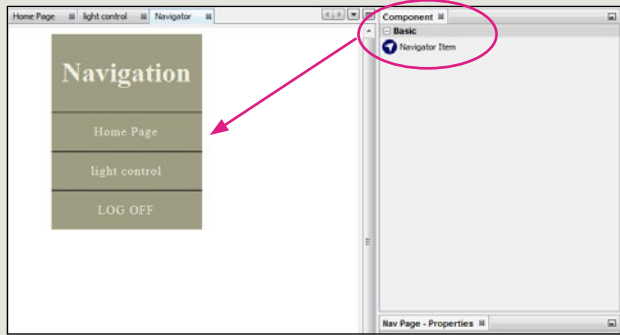


Figure 10

Now you can configure the navigation. Double-click on "Navigation" in the project tree on the left to open the workspace. Again using drag-and-drop, insert a navigator item into the Navigation box and in Properties link it to your navigation page (Figure 10).

Save the project, or transfer it to a LOGO! controller. It is necessary that you insert a "FAT 32"-formatted microSD card in the logic module to do so.

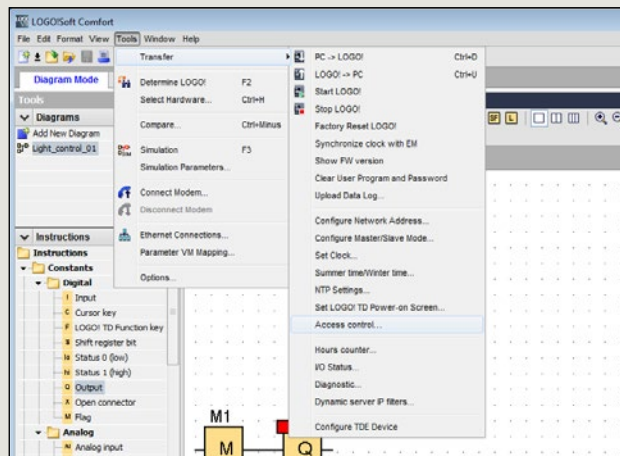


Figure 11

Next, enable access rights for the web server in LOGO! (Figure 11) and assign a password (Figure 12). You will need the LOGO! Soft Comfort engineering software for this.

Open a web browser and select the LOGO! IP address and your user-specific pages – and your self-created website will appear (Figure 13). ■

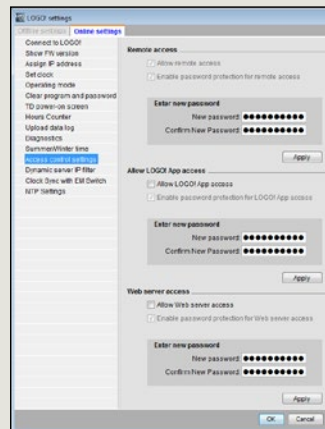


Figure 12



Figure 13

You can download the LOGO! Web Editor tool free of charge from: siemens.com/logo-software

➤ siemens.com/logo
 ✉ josef.ploch@siemens.com