

A photograph of four business professionals in a modern office hallway. On the left, a man in a light grey shirt and trousers holds a black folder and gestures while talking to a woman in a white shirt and light trousers who is holding a clipboard. On the right, a man in a light sweater and trousers holds a black folder and points upwards while talking to a woman in a light blue cardigan and beige dress who is holding a clipboard. Next to her, another man in a light blue shirt and grey trousers holds a black folder and looks towards the group. The background is a plain, light-colored wall.

COMOS Training Calendar 2018/2019

www.siemens.com/comos

Scan this code
for further
informations.



COMOS Training Offer

Whether you're looking for basic knowledge for first-time users or specialist know-how for experts and administrators – the COMOS Training Center always offers you the right training for your requirements.

Structured, practise-oriented training courses

Regardless of whether you work as a COMOS user or administrator, our requirement-oriented COMOS training courses provide substantial support in achieving your learning success.

COMOS training cooperation partner WIFI in Austria

In order to provide adequate education and trainings for COMOS in Austria, Siemens is cooperating with WIFI Vienna since 2015.

WIFI supports Siemens by providing class rooms and infrastructure and with the administration of trainings. COMOS contents are trained by experienced Siemens staff.

COMOS training in German language

For German trainings **please check the German Training Calender in the [Internet](#).**

<http://www.automation.siemens.com/mcms/plant-engineering-software/de/comos-training>

From “first-time users” to “COMOS experts”

AStarting with the obligatory COMOS Training Platform (Basic), you can expand your capabilities across the entire breadth of the COMOS software, or acquire expert know-how via our three-stage Administrator Training. Our range of courses with its wide variety of combination options supports you in acquiring comprehensive know-how that can be immediately applied, and in building up sound knowledge of COMOS in theory and practice. Please note, however, that some training courses require prior knowledge of certain topics. You can find the relevant details, as well as the content and duration of courses, in the training descriptions

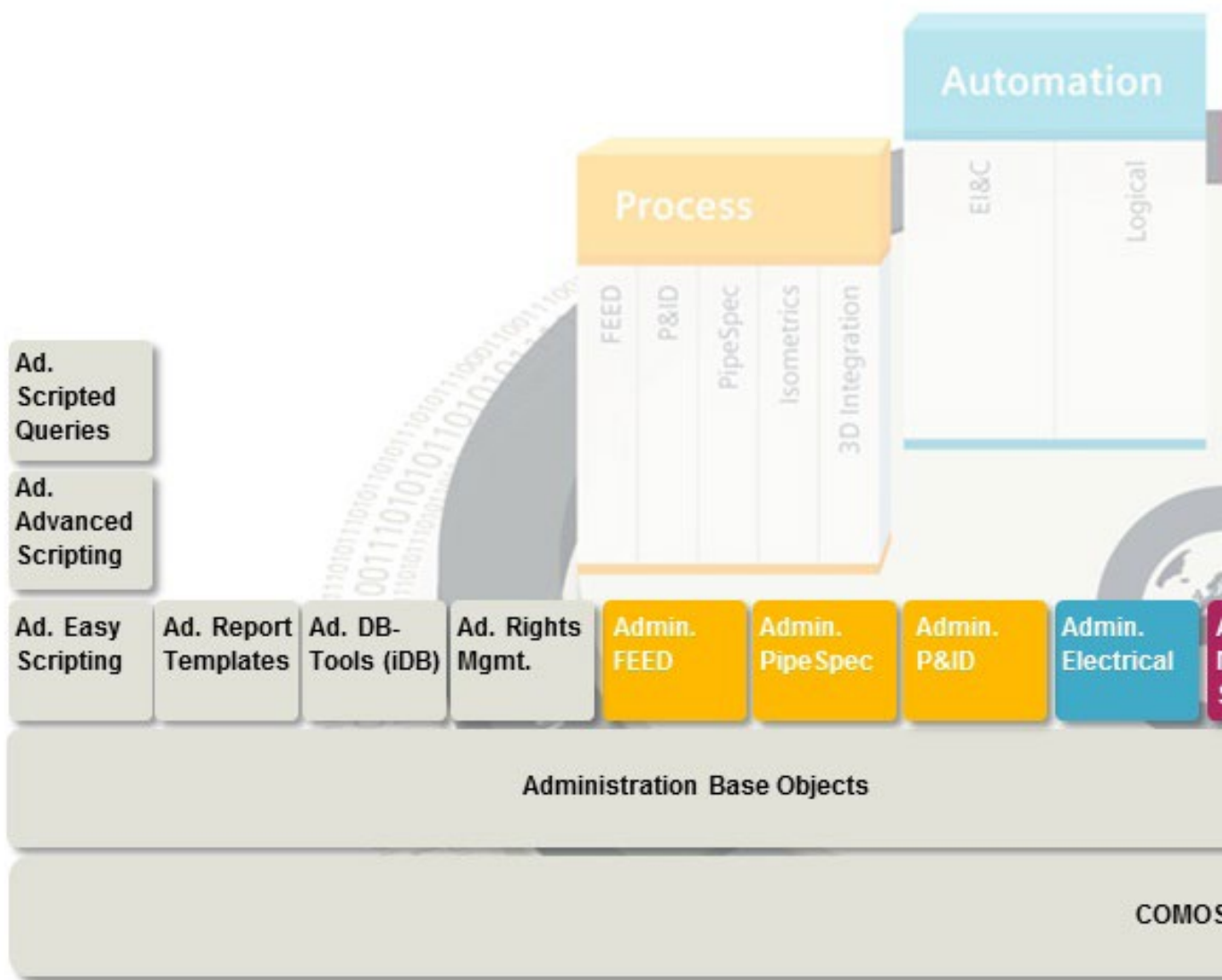
Field-proven standard range, or customized training

All courses are held in venues with the most up-to-date equipment at our location in Essen, or on your own premises if desired.

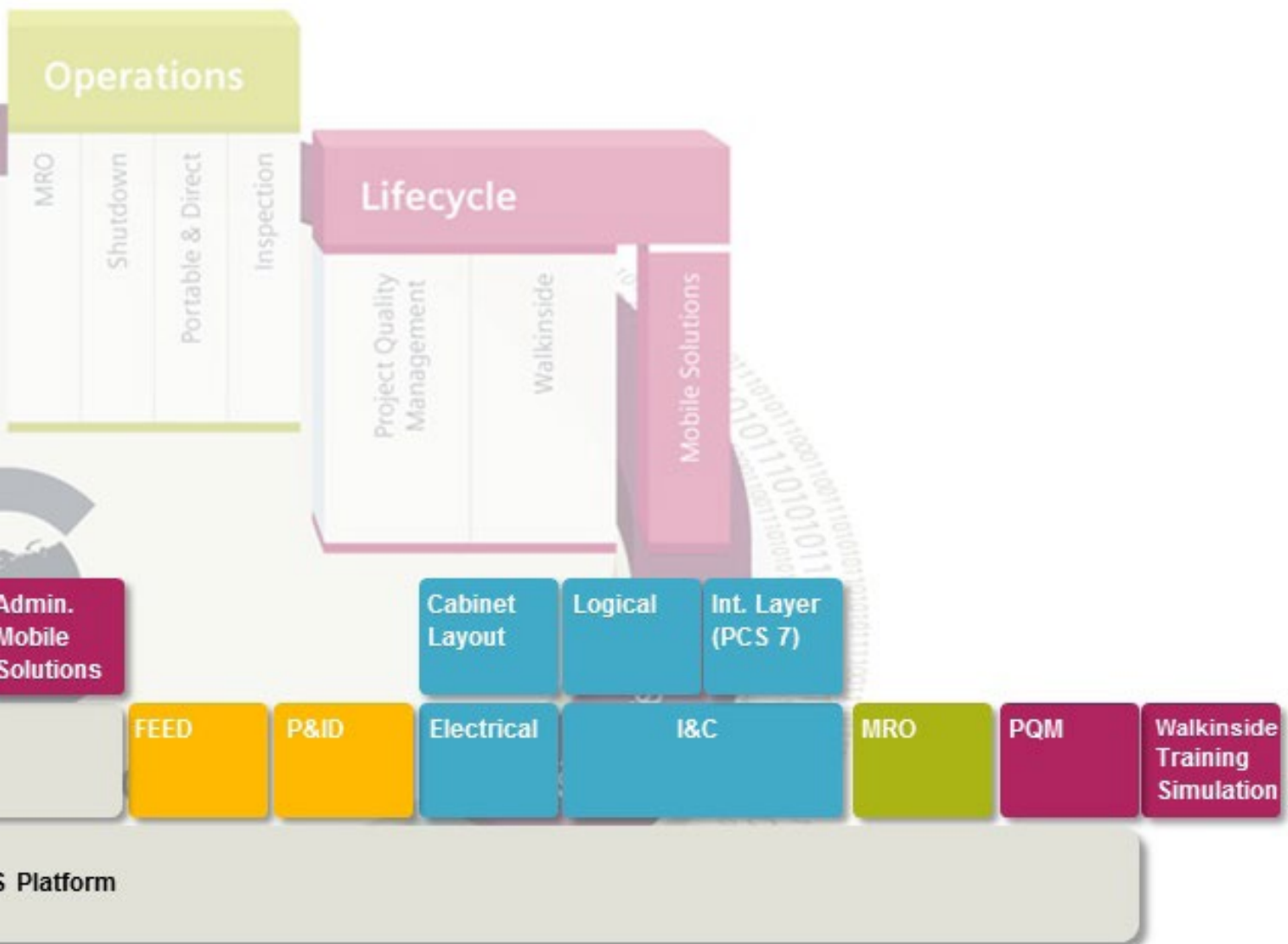
Our trainings are done in English and bases on the standard software and database as it is originally delivered.

All courses can also be booked in other languages based on request. If you should have further requirements for special content or individual topics, please contact us.

Training Portfolio and Learning Path



s for COMOS and COMOS Walkinside



Training Calendar October

Date	Essen, Germany	USA
01. Oct.		
02. Oct.		
03. Oct.		
04. Oct.		
05. Oct.		
06. Oct.		
07. Oct.		
08. Oct.		
09. Oct.		
10. Oct.		
11. Oct.		
12. Oct.		
13. Oct.		
14. Oct.		
15. Oct.		
16. Oct.		
17. Oct.		
18. Oct.		
19. Oct.		
20. Oct.		
21. Oct.		
22. Oct.		
23. Oct.		
24. Oct.		
25. Oct.		
26. Oct.		
27. Oct.		
28. Oct.		
29. Oct.		
30. Oct.		
31. Oct.		

Date	Essen, Germany	USA
01. Nov.		
02. Nov.		
03. Nov.		
04. Nov.		
05. Nov.		
06. Nov.		
07. Nov.		
08. Nov.		
09. Nov.		
10. Nov.		
11. Nov.		
12. Nov.		
13. Nov.		
14. Nov.		
15. Nov.		
16. Nov.		
17. Nov.		
18. Nov.		
19. Nov.		
20. Nov.		
21. Nov.		
22. Nov.		
23. Nov.		
24. Nov.		
25. Nov.		
26. Nov.		
27. Nov.		
28. Nov.		
29. Nov.		
30. Nov.		

Date	Essen, Germany	USA
01. Dec.		
02. Dec.		
03. Dec.		
04. Dec.		
05. Dec.		
06. Dec.		
07. Dec.		
08. Dec.		
09. Dec.		
10. Dec.	Platform	
11. Dec.	Platform	
12. Dec.	Instrumentation & Control	
13. Dec.	Instrumentation & Control	
14. Dec.	P&ID (only for partners)	
15. Dec.		
16. Dec.		
17. Dec.	Walkinside Training Simulation	
18. Dec.	Walkinside Training Simulation	
19. Dec.	Administration Base Objects	
20. Dec.	Administration Base Objects	
21. Dec.	Administration Right Management	
22. Dec.		
23. Dec.		
24. Dec.		
25. Dec.		
26. Dec.		
27. Dec.		
28. Dec.		
29. Dec.		
30. Dec.		
31. Dec.		

er 2018 - March 2019

Date	Essen, Germany	USA
01. Jan.		
02. Jan.		
03. Jan.		
04. Jan.		
05. Jan.		
06. Jan.		
07. Jan.		
08. Jan.		
09. Jan.		
10. Jan.		
11. Jan.		
12. Jan.		
13. Jan.		
14. Jan.		
15. Jan.		
16. Jan.		
17. Jan.		
18. Jan.		
19. Jan.		
20. Jan.		
21. Jan.		
22. Jan.		
23. Jan.		
24. Jan.		
25. Jan.		
26. Jan.		
27. Jan.		
28. Jan.		
29. Jan.		
30. Jan.		
31. Jan.		

Date	Essen, Germany	USA
01. Feb.		
02. Feb.		
03. Feb.		
04. Feb.		
05. Feb.		
06. Feb.		
07. Feb.		
08. Feb.		
09. Feb.		
10. Feb.		
11. Feb.		
12. Feb.		
13. Feb.		
14. Feb.		
15. Feb.		
16. Feb.		
17. Feb.		
18. Feb.		
19. Feb.		
20. Feb.		
21. Feb.		
22. Feb.		
23. Feb.		
24. Feb.		
25. Feb.	Platform	
26. Feb.	Platform	
27. Feb.	Instrumentation & Control	
28. Feb.	Instrumentation & Control	

Date	Essen, Germany	USA
01. Mar.	P&ID (only for partners)	
02. Mar.		
03. Mar.		
04. Mar.		
05. Mar.		
06. Mar.		
07. Mar.		
08. Mar.		
09. Mar.		
10. Mar.		
11. Mar.		
12. Mar.		
13. Mar.		
14. Mar.		
15. Mar.		
16. Mar.		
17. Mar.		
18. Mar.		
19. Mar.		
20. Mar.		
21. Mar.		
22. Mar.		
23. Mar.		
24. Mar.		
25. Mar.		
26. Mar.		
27. Mar.		
28. Mar.		
29. Mar.		
30. Mar.		
31. Mar.		

Training Calendar April 2

Date	Essen, Germany	USA
01. Apr.	Administration Base Objects	
02. Apr.	Administration Base Objects	
03. Apr.	MRO	
04. Apr.	MRO	
05. Apr.	mobile MRO worshop (only for partners)	
06. Apr.		
07. Apr.		
08. Apr.		
09. Apr.		
10. Apr.		
11. Apr.		
12. Apr.		
13. Apr.		
14. Apr.		
15. Apr.		
16. Apr.		
17. Apr.		
18. Apr.		
19. Apr.		
20. Apr.		
21. Apr.		
22. Apr.		
23. Apr.		
24. Apr.		
25. Apr.		
26. Apr.		
27. Apr.		
28. Apr.		
29. Apr.		
30. Apr.		

Date	Essen, Germany	USA
01. May		
02. May		
03. May		
04. May		
05. May		
06. May		
07. May		
08. May		
09. May		
10. May		
11. May		
12. May		
13. May		
14. May		
15. May		
16. May		
17. May		
18. May		
19. May		
20. May		
21. May	Platform	
22. May	Platform	
23. May	MRO	
24. May	MRO	
25. May		
26. May		
27. May		
28. May		
29. May		
30. May		
31. May		

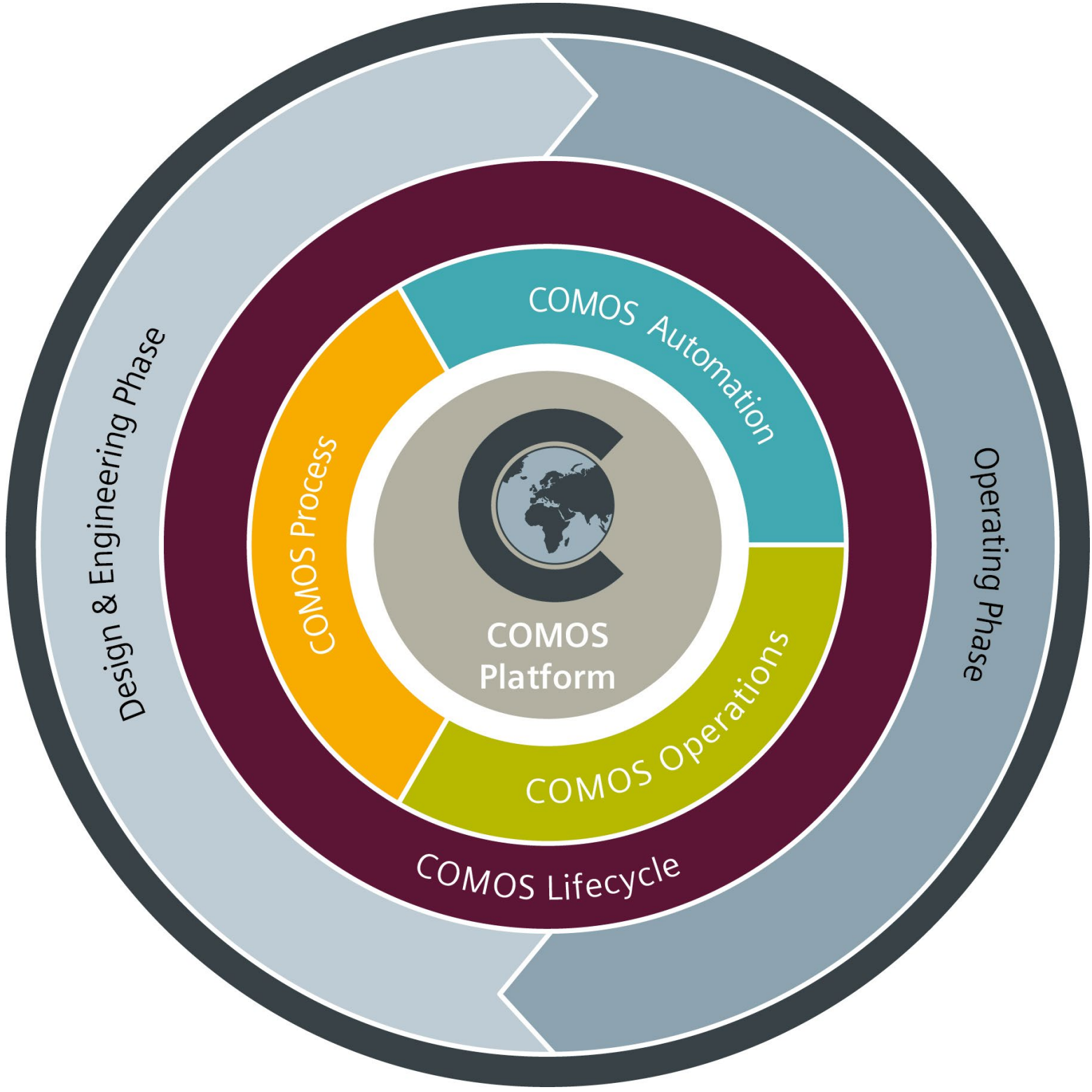
Date	Essen, Germany	USA
01. Jun.		
02. Jun.		
03. Jun.		
04. Jun.		
05. Jun.		
06. Jun.		
07. Jun.		
08. Jun.		
09. Jun.		
10. Jun.		
11. Jun.		
12. Jun.		
13. Jun.		
14. Jun.		
15. Jun.		
16. Jun.		
17. Jun.		
18. Jun.		
19. Jun.		
20. Jun.		
21. Jun.		
22. Jun.		
23. Jun.		
24. Jun.		
25. Jun.		
26. Jun.		
27. Jun.		
28. Jun.		
29. Jun.		
30. Jun.		

019 - September 2019

Date	Essen, Germany	USA
01. Jul.	Platform	
02. Jul.	Platform	
03. Jul.	Instrumentation & Control	
04. Jul.	Instrumentation & Control	
05. Jul.	P&ID (only for partners)	
06. Jul.		
07. Jul.		
08. Jul.	Walkinside Training Simulation	
09. Jul.	Walkinside Training Simulation	
10. Jul.	Administration Base Objects	
11. Jul.	Administration Base Objects	
12. Jul.	Administration Right Management	
13. Jul.		
14. Jul.		
15. Jul.		
16. Jul.		
17. Jul.		
18. Jul.		
19. Jul.		
20. Jul.		
21. Jul.		
22. Jul.		
23. Jul.		
24. Jul.		
25. Jul.		
26. Jul.		
27. Jul.		
28. Jul.		
29. Jul.		
30. Jul.		
31. Jul.		

Date	Essen, Germany	USA
01. Aug.		
02. Aug.		
03. Aug.		
04. Aug.		
05. Aug.		
06. Aug.		
07. Aug.		
08. Aug.		
09. Aug.		
10. Aug.		
11. Aug.		
12. Aug.		
13. Aug.		
14. Aug.		
15. Aug.		
16. Aug.		
17. Aug.		
18. Aug.		
19. Aug.		
20. Aug.		
21. Aug.		
22. Aug.		
23. Aug.		
24. Aug.		
25. Aug.		
26. Aug.		
27. Aug.		
28. Aug.		
29. Aug.		
30. Aug.		
31. Aug.		

Date	Essen, Germany	USA
01. Sep.		
02. Sep.		
03. Sep.		
04. Sep.		
05. Sep.		
06. Sep.		
07. Sep.		
08. Sep.		
09. Sep.		
10. Sep.		
11. Sep.		
12. Sep.		
13. Sep.		
14. Sep.		
15. Sep.		
16. Sep.	Platform	
17. Sep.	Platform	
18. Sep.	Instrumentation & Control	
19. Sep.	Instrumentation & Control	
20. Sep.	P&ID (only for partners)	
21. Sep.		
22. Sep.		
23. Sep.	Administration Base Objects	
24. Sep.	Administration Base Objects	
25. Sep.	MRO	
26. Sep.	MRO	
27. Sep.	mobile MRO worshop (only for partners)	
28. Sep.		
29. Sep.		
30. Sep.		



COMOS Training Platform



Contents

The COMOS Platform training is aimed at planning engineers, drafters or future COMOS administrators. Participants learn about the philosophy of COMOS, how to handle the Navigator, and how to create structures and engineering objects. They are also introduced to tools such as queries and bulk processing, and to interfaces and working layers.

Target Group

Planners, drafters, engineers, project team members

Prerequisite

Windows user knowledge

Overview

- COMOS-projects and interface
- Navigator and tabs, COMOS objects
- COMOS objects
- Basics for queries
- Queries and bulk processing
- Documents and lists
- Interfaces
- Working layers

Duration: 2 days

Number of participants: min. 3, max. 6 persons



COMOS Training FEED

Contents

During the COMOS FEED training, participants learn how to use practice-oriented methods and processes to import simulation data and carry out process front end engineering with all the relevant objects, drawing types and documents in COMOS.

Target Group

Planners, drafters, engineers, project team members

Prerequisite

COMOS Training Platform

Overview

- Creating structures and objects
- Editing and placing objects
- Importing simulation data
- Case management and process data management
- Mass balancing
- Knowledge database & PFD conversion
- Revision and redlining
- Copy methods

Duration: 2 days

Number of participants: min. 3, max. 6 persons

COMOS Training P&ID



Contents

During the COMOS P&ID training, participants learn how to use practice-oriented methods and processes to carry out graphical, process engineering planning with all the relevant objects, drawing types and documents in COMOS.

Target Group

Planners, drafters, engineers, project team members

Prerequisite

COMOS Training Platform

Overview

- Creating structures and objects
- Editing and placing objects
- Pipes
- Objects for process engineering
- Measurement functions
- Revision and redlining
- Copy methods
- Further functionalities

Duration: 2 days

Number of participants: min. 3, max. 6 persons



COMOS Training Instrumentation & Control

Contents

During the COMOS Instrumentation & Control (I&C) training, participants learn to use practice-oriented methods and processes to carry out I&C engineering, create measuring and actuating functions and draft position diagrams using the COMOS EI&C module.

Target Group

Planners, drafters, engineers, project team members

Prerequisite

COMOS Training Platform

Overview

- Structure engineering
- Positions and functions within I&C engineering
- Requests / manufacturer devices
- Loop diagram and its automatism
- Programmable logic controller / connection elements
- Connecting and marshalling
- Signal engineering and loop document manager
- Revisions

Duration: 2 days

Number of participants: min. 3, max. 6 persons

COMOS Training Logical



Contents

This is an advanced training for the experienced users with knowledge gained in the COMOS I&C training. Participants learn how to handle signals, actions, step sequences and function diagrams with the COMOS module Logical.

Target Group

Planners, developers (automation), engineers, project team members

Prerequisite

COMOS Training Instrumentation & Control

Overview

- Basics
- Function diagrams
- Step sequences
- Further blocks / functionalities

Duration: 1 day

Number of participants: min. 3, max. 6 persons



COMOS Training Electrical Engineering

Contents

During the COMOS Electrical Engineering (EE) training, participants learn how to use practice-oriented methods and processes to carry out electrical engineering and create circuit diagrams with the COMOS module EI&C.

Target Group

Planners, drafters, engineers, project team members

Prerequisite

COMOS Training Platform

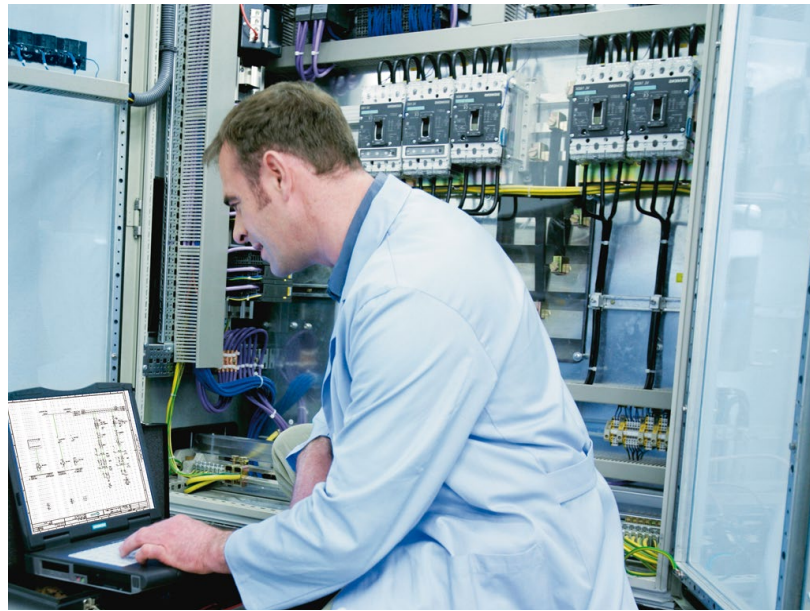
Overview

- Structure engineering
- Objects in electrical engineering
- Placing objects in circuit diagrams
- Potentials and terminal strips
- Contacts and contact surfaces
- Cables and connections
- Controllers and manufacturer devices
- Single line diagrams and revisions

Duration: 2 days

Number of participants: min. 3, max. 6 persons

COMOS Training Cabinet Layout



Contents

The Cabinet Layout training is intended as an advanced course for experienced users with knowledge gained in the COMOS Electrical Engineering training. Participants learn how to use methods and tools for planning control cabinets with the COMOS module EI&C. The focus is on creating and synchronizing views and equipping cabinets and rails.

Target Group

Planners, drafters, design engineers, engineers, project team members

Prerequisite

COMOS Training Electrical Engineering

Overview

- Objects and structures for cabinet systems
- Working with the cabinet design
- Working with layout designs
- Cable routing / collision check

Duration: 1 day

Number of participants: min. 3, max. 6 persons

COMOS Training MRO



Contents

The COMOS MRO (Maintenance, Repair & Overhaul) training is aimed at beginners in the areas "Maintenance" and "Plant operation". Participants learn about the basic functionalities of the COMOS module MRO and will work on different Maintenance methods and scenarios.

Target Group

Technicians, engineers, project / maintenance staff

Prerequisite

COMOS Training Platform

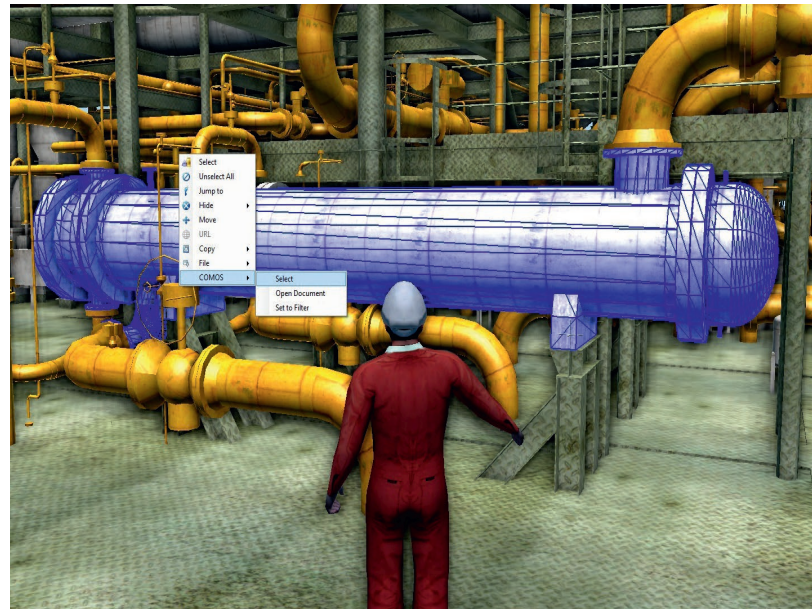
Overview

- MRO project
- Planned maintenance
- Resource management
- Reactive maintenance
- Plugin "Maintenance Demon"
- Plugin "Direct Login"
- MRO settings

Duration: 2 days

Number of participants: min. 3, max. 6 persons

COMOS Training Training Simulation



Contents

This training conveys an introduction to the application "COMOS Walkinside" and is related to the Walkinside products "Viewer", "Editor" and "Instructor". With the help of an existing 3D model, it covers viewer and navigation functionalities and the handling of avatars. Another focus is the set up and handling of scenarios within the 3D environment of a simulated plant. This training is intended for instructors who develop and create maintenance and incidents scenarios. Instructors will learn how to configure a training set up for several trainees and how to evaluate and check the training results.

Target Group

Plant engineers and instructors, specialized in 3D plant simulation and operator training

Prerequisite

Windows user knowledge

Overview

- Opening and viewing a 3D model
- Using viewing functionalities
- Running a scenario
- Creating a scenario
- Working with action types and inventory list
- Creating incidents
- Setting light and creating a full scenario
- Running a scenario in instructor mode

Duration: 2 days

Number of participants: min. 3, max. 6 persons



COMOS Training Integration Layer (PCS 7)

Contents

During the COMOS Integration Layer (PCS 7) training, participants gain an insight into process-oriented and object-oriented data exchange between COMOS and the SIMATIC PCS 7 that allows efficient integration of planning and automation processes. Using a training project as an example, participants learn about a typical workflow, especially preparation and administration within the COMOS software.

Target Group

Planners, developers (automation), engineers, project team members

Prerequisite

COMOS Training Instrumentation & Control or
COMOS Training Logical

Overview

- COMOS / PCS 7 interface
- Import control module types (CMTs)
- Hardware engineering in COMOS
- Software engineering in COMOS
- Configuration Tool and Excel import
- Function plan/standard function/interlock logic
- Working with the connection manager and reports
- Data exchange between COMOS and SIMATIC PCS 7

Duration: 2 days

Number of participants: min. 3, max. 6 Personen

COMOS Training

PQM



Contents

The COMOS training PQM intends to convey the basic system settings and basic functions for document management. Focus topics are the methods for checking in, importing, exporting and the handling of document packages. At the beginning of the training the required configuration, project settings and simple administration tasks are trained.

Target Group

COMOS users working the fields of document, quality, supplier or COMOS project management

Prerequisite

COMOS Training Platform

Overview

- Preparation and configuration
- Administration and customizing
- Importing documents
- Managing documents
- DVM document package
- Document transfer: Export / import
- Transmittals
- Further functionalities

Duration: 2 days

Number of participants: min. 3, max. 6 Personen



COMOS Training Administration Base Objects

Contents

During the COMOS Administration Base Objects training, students acquire the practical knowledge and skills needed by the COMOS administrator to manage and extend the data-base, base object catalogs, tabs and symbols.

Target group

Experienced COMOS users, starting with COMOS administration

Prerequisite

COMOS Training Platform

Overview

- COMOS base project
- COMOS base objects
- Base objects for unit structure
- Handling of the context menu
- Tab & attribute catalog
- Handling of attributes
- Assigning standard tables and tabs
- Handling of symbols

Duration: 2 days

Number of participants: min. 3, max. 6 persons

COMOS Training Administration Report Templates



Contents

During the COMOS Administration Report Templates training, students acquire the practical knowledge and skills required to create, modify and manage individual lists, datasheets and document templates in COMOS.

Target group

COMOS administrators

Prerequisite

COMOS Training Administration Base Objects

Overview

- Structure for document templates
- Queries
- Lists with automatic layout
- Lists with manual layout
- Single page / multi page data sheets
- Dynamic data sheets
- Interactive reports

Duration: 2 days

Number of participants: min. 3, max. 6 persons



COMOS Training Administration Database Tools (iDB)

Contents

The training contains short introductions to tools and plugins in the industrial database, which ensure proper and effective handling of customized base objects. The key topics of the five tools are organizing and retrieving base objects on the one hand, bulk creation and bulk processing of base objects on the other hand.

Target group

COMOS administrators

Prerequisite

COMOS Training Administration Base Objects, preferable familiar with iDB

Overview

- Attribute tool: Create and search
- Attribute tool: Tabs and bulk import
- Processing base objects and icons
- Managing scripts and hardcoding

Duration: 1 day

Number of participants: min. 3, max. 6 persons

Please note:

Training contents refer to industrial database (iDB) only. For experienced administrators, which are using cDB, this training might be interesting for getting a deeper insight into iDB.

COMOS Training Administration Easy Scripting



Contents

The training conveys the first steps for the topic "Scripting in COMOS" and is directly extending the base data know-how you have gained in "Administration Base Objects". It contains simple, practice oriented examples how attribute values or objects symbols are controlled und automated by scripts. Focus is the usage and configuration of prepared, "ready to use" codes (in VB Script) with IF and FOR-statements.

Target group

COMOS administrators, starting with scripting in COMOS

Prerequisite

COMOS Training Administration Base Objects

Overview

- Calculating attribute values
- Dynamic attribute values
- Extending object symbols
- Extending the context menu

Duration: 1 day

Number of participants: min. 3, max. 6 persons

Please note:

This training is not supposed to convey programming methods and skills in a fundamental and structured way.

So, for your training success practical programming skills are not required, but you should bring interest, curiosity and affinity for this topic.



COMOS Training Administration Advanced Scripting

Contents

During the COMOS Administration Advanced Scripting training, the experienced COMOS administrators acquire the practical knowledge and skills required to automate, extend and individually adapt objects, documents and processes in COMOS with the help of scripting.

Target group

COMOS administrators, specializing in scripting

Prerequisite

COMOS Training Administration Base Objects and programming skills

COMOS Training Administration Easy Scripting (for students without programming skills)

Overview

- COMOS scripting basics
- COMOS objects
- Script library and clipboard scripts
- COMOS object model
- Navigation and symbol design
- Attributes
- Collections
- Managing scripts and hardcoding

Duration: 2 days

Number of participants: min. 3, max. 6 persons

COMOS Training Administration Scripted Queries



Contents

This training is extending the know-how gained in "Administration Advanced Scripting" and conveys knowledge needed to script and automate queries. Besides an introduction to database search for engineering objects, several scenarios for scripting within queries will be demonstrated with the help of examples. Also, tools and supporting features for the handling of scripts will be explained.

Target group

Experienced COMOS administrators

Prerequisite

COMOS Training Administration Advanced Scripting and basic scripting skills

Overview

- Database search and script block "Action"
- Queries with scripting
- Queries via scripting and object debugger
- Using the "Search Manager"

Duration: 1 day

Number of participants: min. 3, max. 6 persons



COMOS Training Administration PipeSpec

Contents

The COMOS Training Administration PipeSpec is focused on COMOS administrators and conveys the creation and management of pipe parts and pipe specs. A sample pipe spec with already existing pipe parts will be created, which also contains the fastening material for an automated bolt calculation.

Finally, the use of pipe specs in engineering projects with 2D and 3D views will be demonstrated.

Target Group

Planners, engineers, project team members specialized in pipeline construction

Prerequisite

COMOS Training Administration I

Overview

- System of standards
- Standard geometry tables
- Managing a pipe part catalog
- Pipe spec administration
- Bolt sets
- Pipe spec in basic und detail engineering

Duration: 2 days

Number of participants: min. 3, max. 6 persons

COMOS Training Administration Rights Management



Contents

The COMOS Training Administration Rights Management is imparting the principle methods and functionalities for managing users and rights. It covers topics like object rights, user groups, user roles and first steps for working with the USERS project. The training is focused on beginners and based on standard functions in COMOS

Target group

Experienced COMOS users, specializing in project and COMOS administration

Prerequisite

COMOS Training Administration based Objects

Overview

- User and object management
- Working areas
- Groups
- Roles

Duration: 1 day

Number of participants: min. 3, max. 6 persons



COMOS Training Administration FEED

Contents

The training Administration FEED is extending directly the base data know how you have gained in "Administration Base Objects" and conveys all steps for creating and configuring a customized FEED object (CDevice, device). Key aspects are the definition of design cases, preparation of simulation data import and the required document templates and attribute mapping.

Target group

Experienced COMOS users, specialized in COMOS administration in the area of process engineering / design

Prerequisite

COMOS Training Administration Base Objects

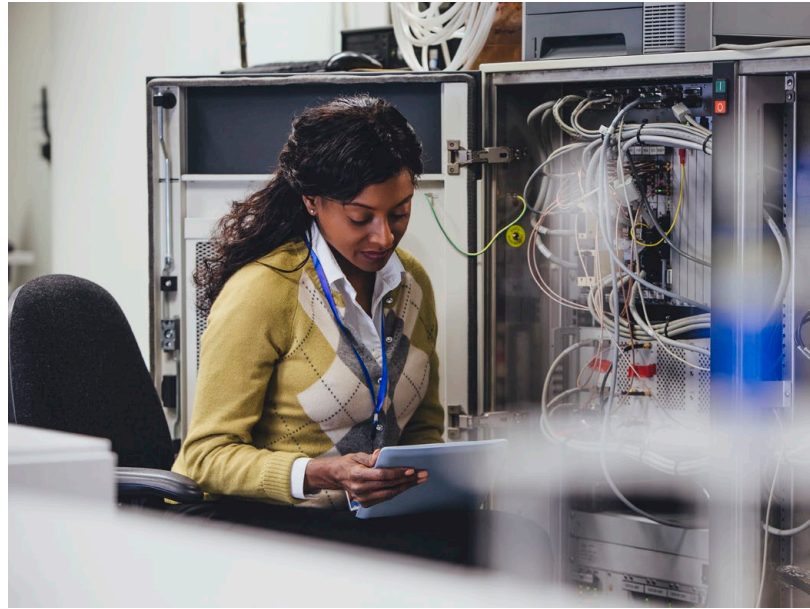
Overview

- Creating and preparing base objects
- Creating document templates
- Importing simulation data
- Preparing and mapping attributes

Duration: 1 day

Number of participants: min. 3, max. 6 persons

COMOS Training Administration P&ID



Contents

The COMOS Training Administration P&ID is extending seamlessly the basic know-how for base objects and is conveying specific topics regarding process engineering. One key aspect is the configuration of object symbols via textfunctions. The second part of the training contains several methods for configuring, linking and mapping of attributes..

Target group

COMOS administrators in the area of process engineering

Prerequisite

COMOS Training Administration Base Objects

Overview

- Subsymbols via attributes
- Subsymbols via elements
- Configuring and linking attributes
- Using mapping tables

Duration: 1 day

Number of participants: min. 3, max. 6 persons



COMOS Training Administration Mobile Solutions

Contents

The training Administration Mobile Solutions conveys the exemplary and simplified installation of a local environment for running COMOS Mobile Solutions. The second part of the training contains the usage and configuration of COMOS web functionalities. Focus points are: Configuring a key parameter and information dashboard and document handling.

Target group

COMOS administrators

Prerequisite

COMOS Training Administration Base Objects

Overview

- Installing a baseline
- Installing SQL database and web sites
- Configuring the COMOS Web Dashboard
- Using basic web-functionalities

Duration: 1 day

Number of participants: min. 3, max. 6 persons

Please note:

This training will be conducted on dedicated training hardware only. Functionalities for MobileMRO and Android devices are not part of the contents.

COMOS Training Administration Electrical



Contents

The COMOS Training Administration Electrical is extending seamlessly the basic know how for base data and is conveying specific topics regarding electrical engineering. Key aspects are creating and configuring object symbols, working with the so-called engineering tasks, by which workflows can be automated, and the handling of templates.

Target group

COMOS administrators in the area of electrical engineering

Prerequisite

COMOS Training Administration Base Objects

Overview

- Handling subsymbols and attributes
- Handling subsymbols and elements
- Basics for engineering tasks
- Creating and managing templates

Duration: 1 day

Number of participants: min. 3, max. 6 persons

With the wide range of training courses to acquire directly applicable, comprehensive know-how and increase your knowledge. COMOS training aimed at first-time users, experienced users and to persons who work in the future in the context of projects with COMOS.

In addition, the three-stage training program for COMOS administrators gives you the opportunity to deepen the knowledge and skills.

Individual training is offered on request, tailored to your specific needs.

Siemens Industry Software GmbH

Kruppstr. 16

D-45128 Essen

Phone: +49 (0) 201 31937 157

E-Mail: training.comos@siemens.com

www.siemens.com/comos