

SIEMENS

QUICK REFERENCE GUIDE TO REPLACING MCFs IN THE GCP 4000

Document Number SIG-QG-10-01

Version A.1

WARNING

DURING MODULE CHANGE OUT, SOFTWARE CHANGE, REBOOT, AND CALIBRATION PROCEDURES, WARNING DEVICES MAY NOT OPERATE AS INTENDED. TAKE ALTERNATE MEANS TO WARN PEDESTRIANS, EMPLOYEES AND VEHICULAR TRAFFIC.

NOTE

Verify that replacement MCF is compatible with the currently installed MEFs.

1. Copy the new MCF to the laptop in a folder in the C:\Safetran\DT directory or another convenient folder on the PC which will be used to install the software.
2. Connect the serial cable between the PC and the CPU module DIAG (CP) port.

DIAG (CP) Port



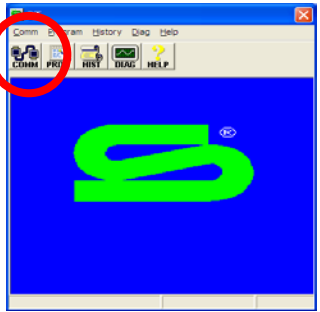
3. Open the DT software by double clicking on the DT icon on the desktop, or by double clicking on the DT.exe file found in C:\SAFETRAN\DT\.

NOTE

DT screens may vary slightly depending on version used. Data displayed will depend on actual MCF installed.

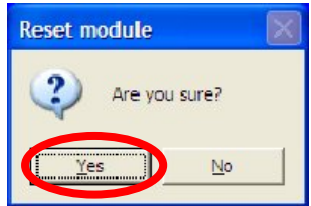
4. Select the **COMM** button.

COMM Button

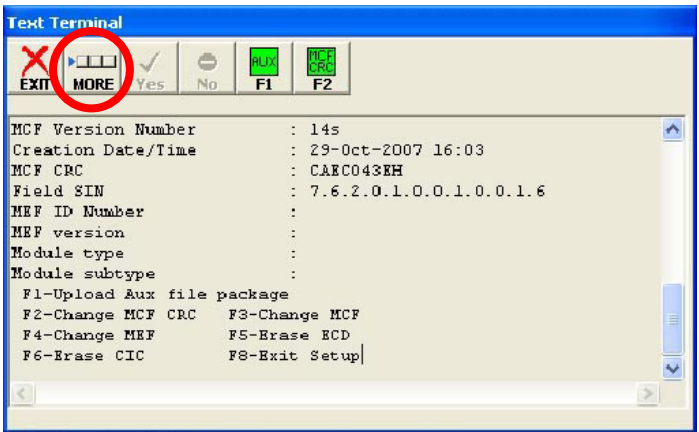


5. A menu will appear. Select **Install Software**.

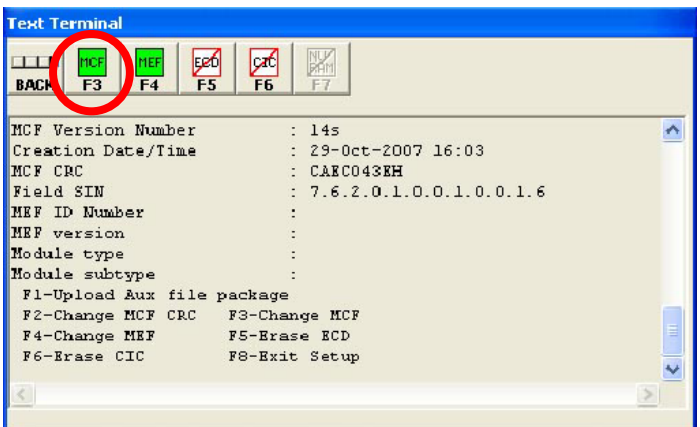
6. A dialog box prompt will ask if you are sure you want to **RESET MODULE**. Select the **YES** button.



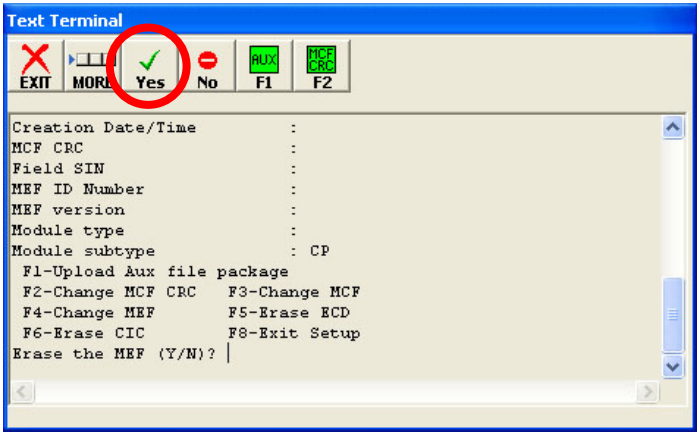
7. The following Text Terminal screen will appear. Select the **MORE** button.



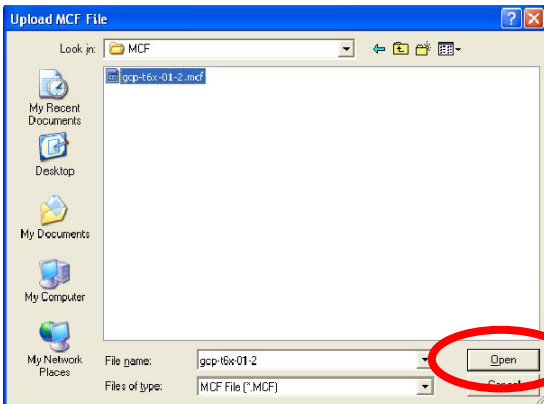
8. Select the **MCF/F3** button.



9. At the **Erase the MCF (Y/N)?** prompt, type **Y** or select the **YES** button.

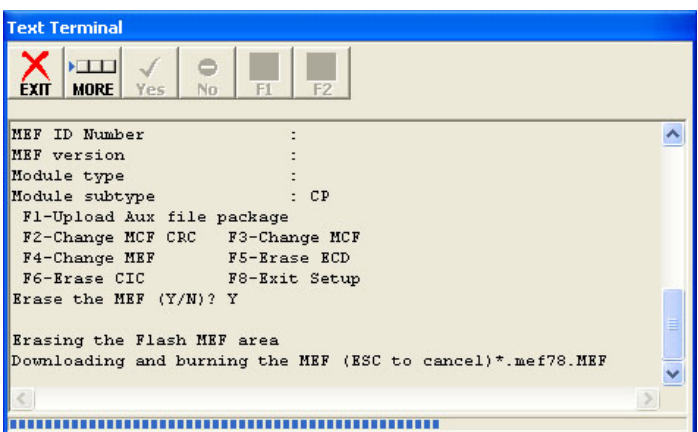


10. After erasing the previous MCF, the following dialog box will appear.



11. Select the file to be installed (**gcp-t6x-01-2** in the example above). Select the **Open** button. The file installation may take a few minutes.

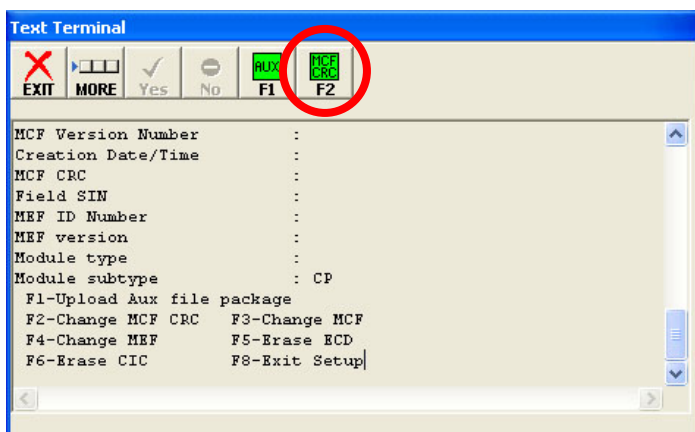
12. While the file is downloading, progress will be indicated on the bottom line of the window.



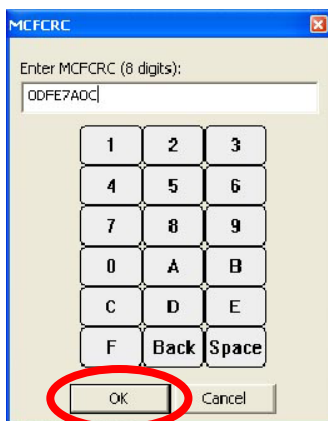
NOTE

After the blue progress bar stops, the CPU loads a copy of the file to the ECD on the chassis. This is indicated on the DT screen and on the 4 character display on the CPU as **LOADING TO ECD**. Wait until this process completes before proceeding.

13. When complete, the DT returns to the following screen. Now change the MCF CRC. Select the **MCF CRC/F2** button.



14. The following dialog box will be displayed. Enter the CRC issued with the software revision instructions. The CRC will always be 8 characters consisting of 0 through 9 and A through F. Select the **OK** button.



15. When the MCF installation is complete, Select the **EXIT** button, then select the **CLOSE** button to return to the DT screen.

WARNING

AFTER INSTALLING NEW SOFTWARE, INITIAL PROGRAMMING OR PROGRAMMING CHANGES, TESTS MUST BE PERFORMED TO VERIFY PROPER OPERATION OF THE GCP SYSTEM PRIOR TO PLACING THE SYSTEM IN SERVICE.