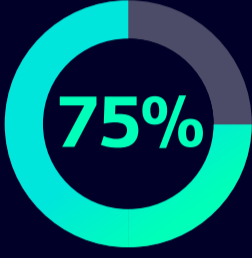




How to boost safety and security for all in healthcare

Threats to safety are real

Physical security in healthcare environments is an immediate and ongoing concern. According to the U.S. Bureau of Labor Statistics, the health care and social service industries are experiencing the highest rates of injuries caused by workplace violence.



As cited by OSHA, 75% of workplace assaults that are reported annually in the U.S. happen in healthcare settings.

Emergency departments are a primary area of concern. In fact, nearly half of emergency physicians report they've been physically assaulted at work according to an American College of Emergency Physicians (ACEP) survey.

Assessing the risks

Threats to security in hospitals fall into three main categories:



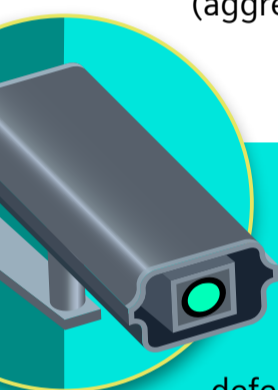
1 Increase of assaults on healthcare professionals
(aggression to staff)



2 Disruptions to healthcare services and operations
(emergencies like fires, power outages, and technical failures)

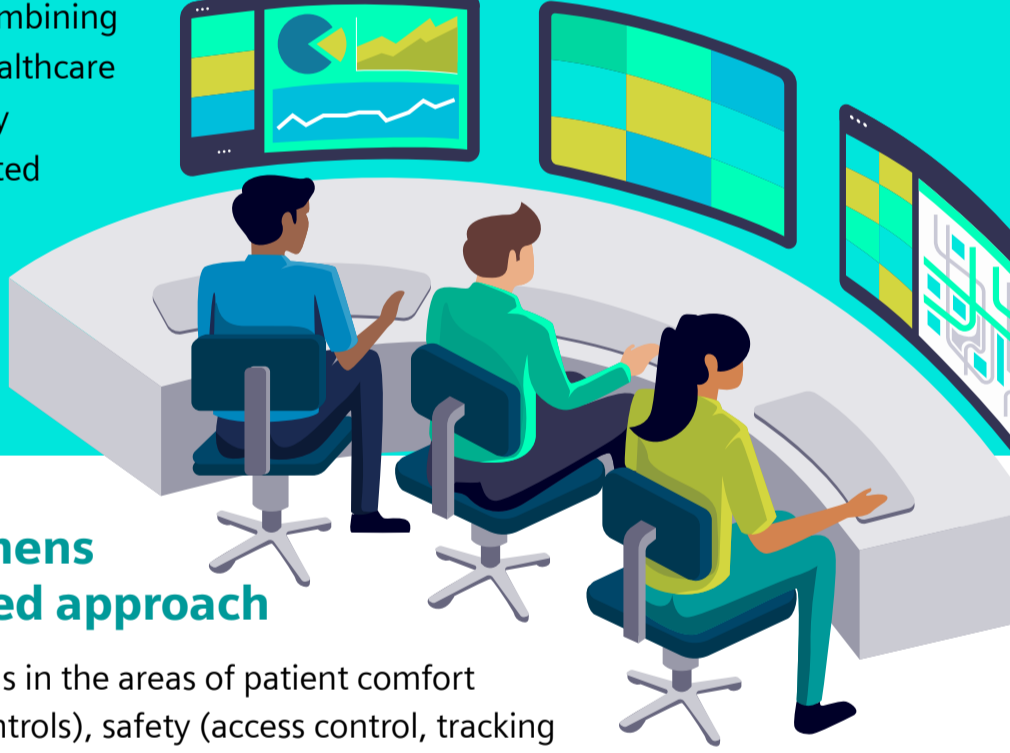


3 Destruction of hospital assets
(disorderly conduct, vandalism, theft, or acts of terrorism)



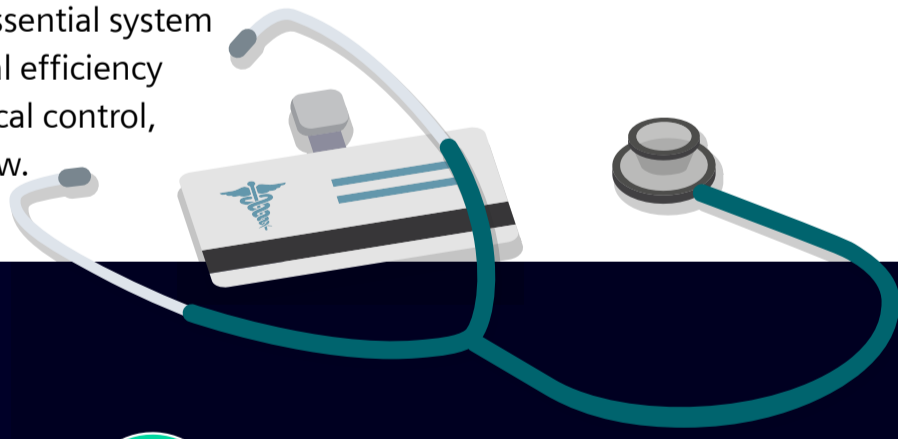
Security systems like access control and video surveillance can provide much needed reassurance. In fact, the best approach to realize the full potential is to integrate multiple technologies in a manner that strengthens the layers of defense. However, integrating diverse systems can be challenging.

Experts like Siemens help by combining the practical knowledge of a healthcare facility with the latest in security technologies to provide integrated control platforms, which can increase situational awareness and speed response.



Elements of the Siemens unified and integrated approach

Siemens offers security solutions in the areas of patient comfort (room-based environmental controls), safety (access control, tracking and alerting, video monitoring, fire protection), compliance (critical storage and lab monitoring, essential system reporting), and operational and clinical efficiency (command center, lighting and electrical control, and advanced analytics), to name a few.



Examples include:



SiPass integrated access control

- Wireless locks to secure cabinets for critical supplies
- Restrict parking lot access to certain patients or staff
- Integration with panic buttons



Suspect follower

- Software enables facility security staff to track suspects through multiple camera views and track a suspect or object as they move throughout a building or campus.



Siveillance video monitoring

- Monitor who is coming and going for situational awareness
- Monitor activity in specific critical or restricted area
- Analytics to help identify opportunities for the healthcare facility in their future planning, number of people coming in and out of the facility each day.



Gunshot detection

- Sensors are used to identify, discriminate, and report gunshots to the police within seconds of a shot being fired.
- Siemens has integrated gunshot detection systems into command-and-control platforms (like Desigo CC, video management systems (like Siveillance Video or SiPass integrated), as well as the Siemens mass notification system. This enables faster response by first responders, and better situational awareness for staff, visitors and patients.



Reference

Learn how the University of Tennessee Health Science Center, located in downtown Memphis, integrated multiple building technologies– including a robust command and control security system – to offer better safety and security for healthcare education faculty, students and the greater community coming for healthcare services, by partnering with Siemens Smart Infrastructure.

To learn more about how Siemens can help you with your security and safety needs visit our website.