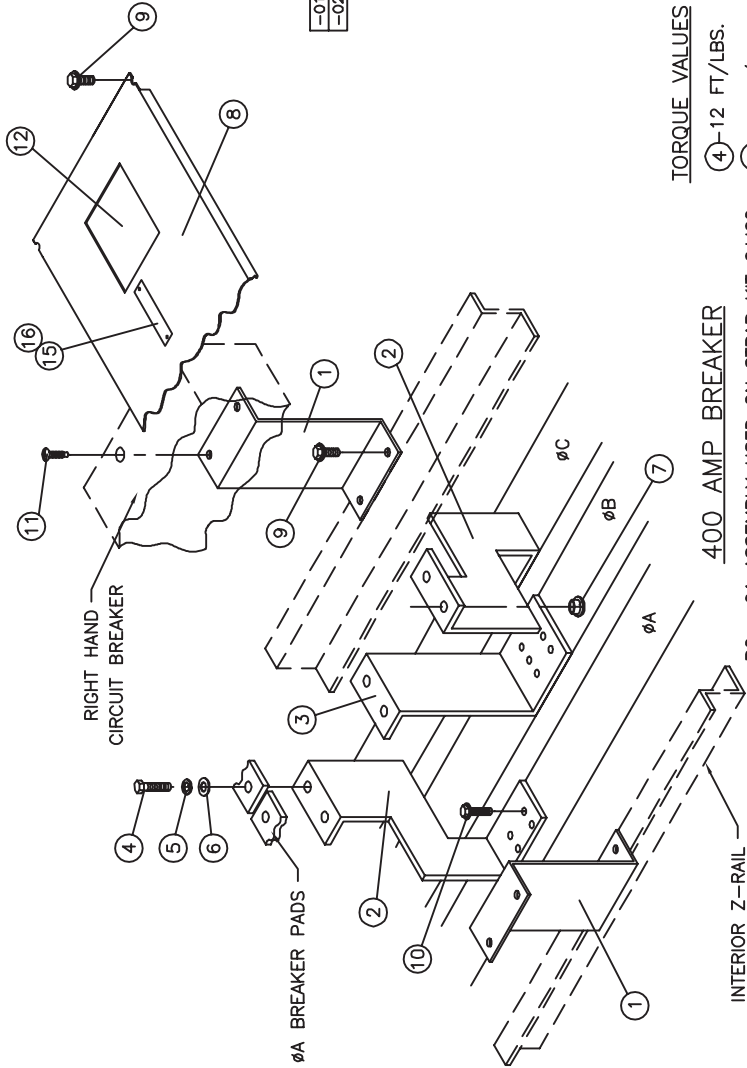


Dwg No. 12-5721  
 Title Block  
 Proj. No.  
 Rev. 11

-02	-01	ITEM	PC. NO.	DESCRIPTION
2	2	1	11-6398-01	MOUNTING BRACKET
2	2	2	16-6974-01	ØAC BRANCH BUS
1	1	3	16-6949-02	ØB BRANCH BUS
6	6	4	11-1566-07	5/16" X 1-1/4" HHMS
6	6	5	11-1618-04	5/16" LOCK WASHER
6	6	6	11-1615-06	5/16" FLAT WASHER
6	6	7	11-1620-04	5/16-18 INSERT
1	1	8	12-6139-01	FRONT PLATE
6	6	9	11-1553-02	1/4-20 X 3/8" SHWHISW
2	2	10	11-B-2022-05	STRAP-BUS HARDWARE KIT
4	4	11	11-1542-14	1/4-20 X 2-3/4" SRHMS
1	1	12	12-5531-11	FILLER PLATE ASSEMBLY
1	-	13	31-1223-01	INSTRUCTION SHEET
1	1	14	15-A-1027-01	CARTON LABEL
2	2	15	11-7505-01	CIRCUIT I.D. CARD
2	2	16	11-7506-01	CARD HOLDER
4	-	17	11-1546-03	1/4-20 X 5/8" HHMS
4	-	18	11-1618-03	1/4" LOCK WASHER
4	-	19	11-1615-04	1/4" FLAT WASHER
-	-	20	11-1580-02	3/8-16 X 1" RISNB
-	-	21	11-1622-01	3/8-16 BELLEVILLE WASHER NUT
1	1	22	48001057	CARTON
-	1	23	11-5570-02	SERIES 5 CONVERSION KIT
-	1	24	31-1169-01	INSTRUCTION SHEET
-	1	25		
-	1	26	12-B-2105-04	NEUTRAL LUG ASSEMBLY
1	-	27	12-B-2105-06	NEUTRAL LUG ASSEMBLY

-01 CAT# 6JJ62  
 -02 CAT# SJ2D



**TORQUE VALUES**

- ④-12 FT/LBS.
- ⑩-72 IN/LBS.

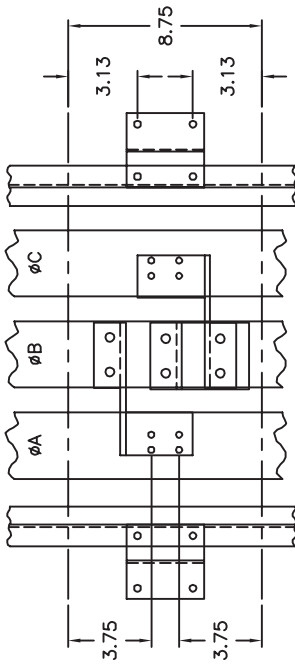
**400 AMP BREAKER**

PC. -01 ASSEMBLY USED ON STRAP KIT 6JJ62  
 PC. -02 ASSEMBLY USED ON STRAP KIT SJ2D

FOR ITE BREAKER TYPES:  
 JD2, JJ6, JL6, HJ6, JXD2  
 JXD2, JXD6, JD6, HJD6, HHJD6

**⚠ DANGER**

Hazardous voltage.  
 Will cause death or serious injury.  
 Keep out.  
 Qualified personnel only.  
 Disconnect and lock off all power before working on this equipment.



Unless otherwise specified dimensions are in inches  
 Tolerances are non-cumulative and are as follows unless specified otherwise.  
 .XX ± .030  
 .XXX ± .015  
 Angular ± 2°  
 Do not scale drawing

Date	C.N.	Rev
4-12-84	0864	0
7-15-88	1945	1
2-16-89	1A-066	2
11-30-90	1A-280	3
1-31-91	1A-280B	4
7-22-91	1A-939	5
2-11-92	1B-190	6
11-11-92	1B-359	7
5-8-95	1B-908	8
04-12-04	1C-831A	9
7-31-06	1C-831B	10
		11

Confidential - Property of  
**Siemens Industry, Inc.**  
 Building Technologies Division

JD FRAME TWIN MOUNTING  
 SERIES 6 BRANCH

Dwg No. 12-5721  
 Scale NONE  
 Sheet 1 of 1

FOR USE WITH JXD2, JXD6, JD6 AND HJD6 FRAME BREAKERS MOUNTED IN SPP/FPP/S5/F2/P5 PANELBOARDS (DEEP BOX).