

TIA Portal V17 – Novedades

TIA Portal

Highlights of TIA Portal V17

Joaquín Sanz Ferrándiz

TIA Portal Product Manager -Controllers

RC-ES DI FA S7-PROD

Spain

E-mail joaquin.sanz@siemens.com

LinkedIn: www.linkedin.com/in/joaquinsanzferrandiz



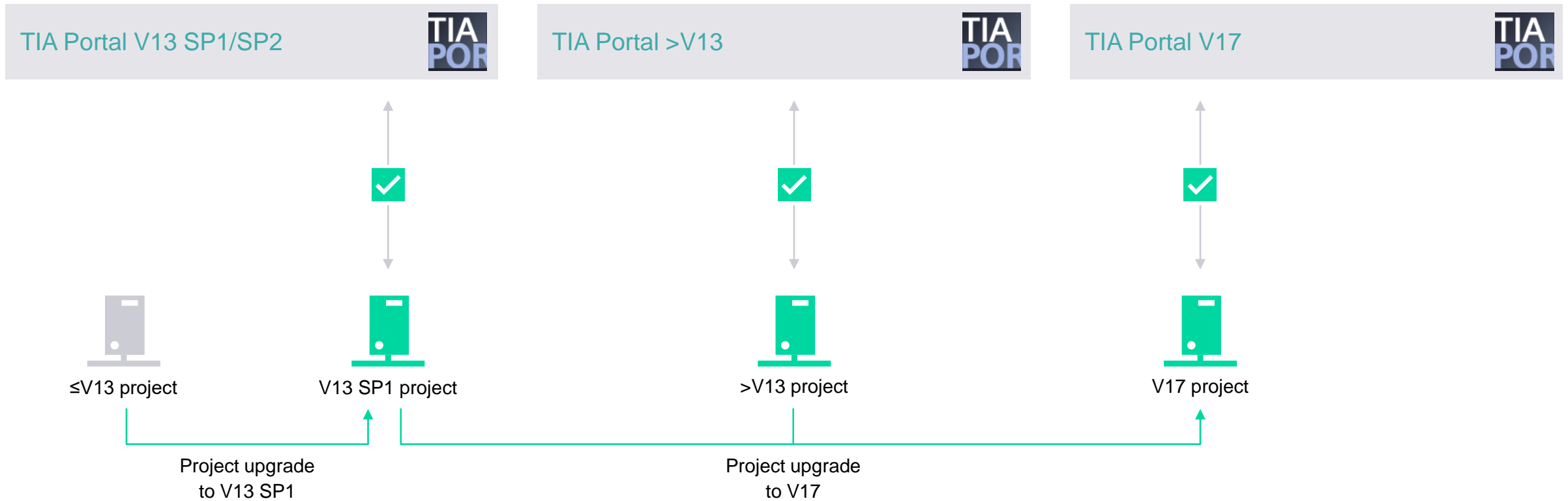
TIA Portal

Highlights of TIA Portal V17

- **TIA Portal Novedades V17**
- **S7-1500 FW 2.9**
- **S7-1200 FW 4.5**
- **S7-1500 R/H FW 2.9**
- **Seguridad en TIA Portal V17**
- **Novedades en los Addons**

TIA Portal V17

Upgrading projects



Side-by-side installation of V13 SP1/SP2 up to V17 allows access to all project versions.
The V17 license can be used for all available versions from V11.

TIA Portal V17

Licencias - Modalidades de suministro Software/SUS

Versión completa

Para uso en producción (con CoL)

Suministro ONLINE



- Con cuenta de usuario y contraseña en SIOS
- Descarga vía OSD con el ALM
- Indicar dirección de correo electrónico de quién hará la descarga

Suministro físico



- El SW se remite a la dirección postal indicada en el momento del pedido.

TIA Portal V17

Licencias - Diferencias entre un update, service pack y un upgrade

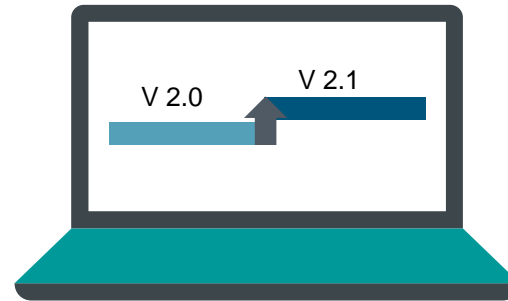
Update



Las actualizaciones eliminan posibles errores del programa y cierran cualquier brecha de seguridad



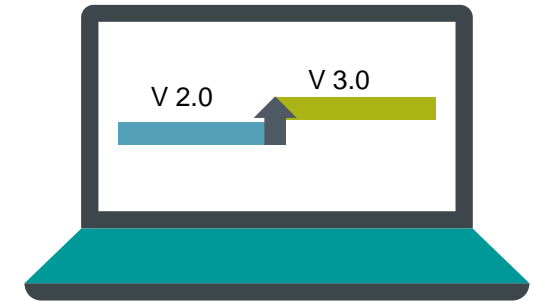
Service pack



Service packs contienen una compilación de actualizaciones y funciones adicionales para actualizar productos de software



Upgrade



Las nuevas versiones de programas o actualizaciones proporcionan una gama ampliada de funciones. El SUS suministra las actualizaciones de forma gratuita dentro del periodo de vigencia



TIA Portal V17

Licencias - ¿Qué es un SUS?

Con la compra del Software Update Service

Recibirá todas las actualizaciones de su software SIMATIC gratis durante un año.



Requisito

Necesaria la última licencia del software

Precio

Aproximadamente un 20% del precio del software

Beneficios

Rápido y a la última

Las actualizaciones y los service packs están disponibles nada mas lanzados al mercado



Proactivo

Recibirás automáticamente el software por correo y se notificará via mail



Transparente

Administración gestión de los contratos SUS con el SUS Manager



Costes predecibles

Para las actualizaciones del software con una cuota anual acorde



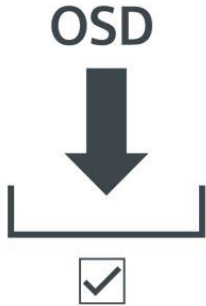
Oferta: SUS
15/08/2021

TIA Portal V17

Licencias

Licencia

6ES7822-1AE07-0YA5



SIMATIC STEP 7 Prof. V17; Floating License para descargar; software de ingeniería en el TIA Portal; software, documentación y clave de licencia para descarga; clase A; en 6 idiomas: de,en,fr,es,it,zh; ejecutable en Windows 7 (64 bits), Windows 10 (64 bits), Windows Server 2012 R2/2016; para configuración de SIMATIC S7-1200/1500, SIMATIC S7-300/400/WinAC, SIMATIC Basic Panels Dirección de e-mail imprescindible para la entrega

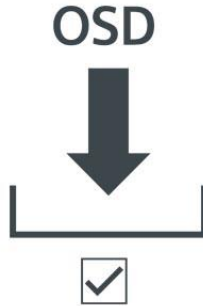
6ES7822-1AA07-0YA5



SIMATIC STEP 7 Prof. V17; Floating License; software de ingeniería en el TIA Portal; SW y documentación en DVD; clave de licencia en memoria USB; clase A; en 6 idiomas: de,en,fr,es,it,zh; ejecutable con Windows 7 (64 bits), Windows 10 (64 bits), Windows Server 2012 R2 (64 bits), Windows Server 2016/2019 (64); para configuración de SIMATIC S7-1200/1500, SIMATIC S7-300/400/WinAC, SIMATIC Basic Panels Contenido: juego (4 DVD + 1 USB)

Upgrade

6ES7822-1AE07-0YE5



SIMATIC STEP 7 Prof. V17; Upgrade V11...V15-> V17 o V11/2010...V15/2017-> V17/2017 SR1 o bien 2006...2010-> V17/2017 SR2 Combo Floating License DL; ingeniería Software en el TIA Portal; también es válido para Upgrade de V11 Single Licenses; software, documentación y clave de licencia para descarga; clase A; en 6 idiomas: de,en,fr,es,it,zh; ejecutable en Windows 7 (64 bits), Windows 10 (64 bits), Windows Server 2012/16 (64); Dirección de e-mail imprescindible para la entrega

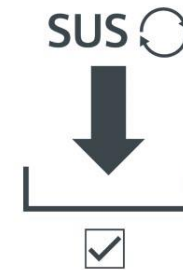
6ES7823-1AA07-0YE5



SIMATIC STEP 7 Prof. V17; Upgrade V11...V15-> V17 o V11/2010...V15/2017 -> V17/2017 SR2 o bien 2006...2010-> V17/2017 SR2 Combo Floating License; ingeniería Software en el TIA Portal; también es válido para Upgrade desde V11 (Single Licenses); SW y documentación en DVD; clave de licencia en memoria USB; clase A; en 6 idiomas: de,en,fr,es,it,zh; ejecutable en Windows 7(64 bits), Windows 10 (64 bits), Windows Server 2012/16/19 (64) ; para configurar SIMATIC S7-1200/1500, S7-300/400/WinAC, SIMATIC Basic Panels

SUS

6ES7822-1AE00-0YY0



SIMATIC STEP 7 Professional Servicio de actualización del software (SUS) descarga para TIA Portal; En el marco de este contrato obtendrá durante un año todas las versiones actuales del software. El contrato se prolonga automáticamente 1 año si no se rescinde 3 meses antes de su vencimiento. Plazo de vigencia de suministro y de prestaciones: 1 año a partir de la fecha de la factura. Requisitos para el cierre: versión actual del software Dirección de e-mail necesaria para la entrega

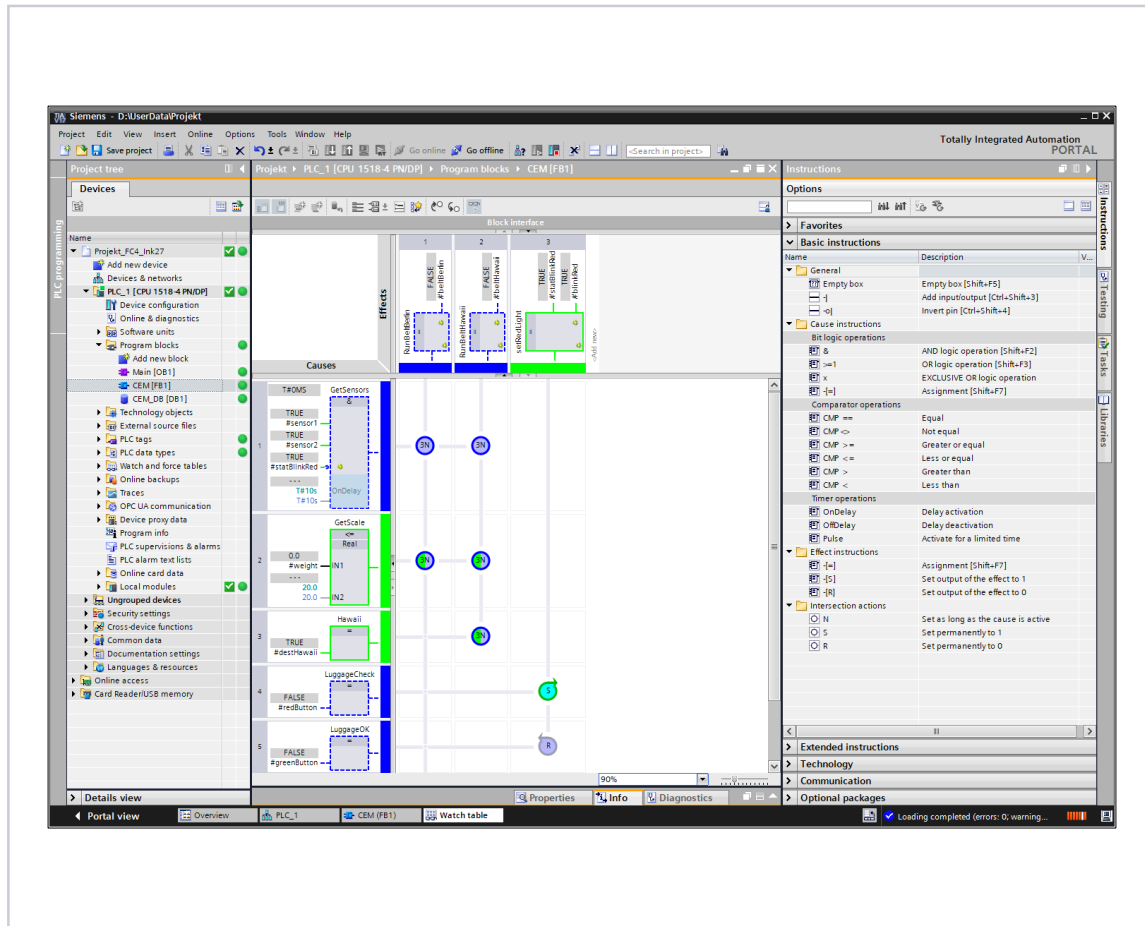
6ES7822-1AA00-0YL5



SIMATIC STEP 7 Professional Servicio de actualización del software (SUS) para STEP 7 en el TIA Portal; En el marco de este contrato obtendrá durante un año todas las versiones actuales del software. El contrato se prolonga automáticamente 1 año si no se rescinde 3 meses antes de su vencimiento. Plazo de vigencia de suministro y de prestaciones: 1 año a partir de la fecha de la factura. Requisitos para el cierre: versión actual del software

TIA Portal V17

Cause Effect Matrix (CEM)



What are the advantages of the CEM?

Efficient and simple programming

→ No need for high-level language expertise

Programming errors easy to detect

→ Perfect clarity thanks to matrix structure

Can be run on S7-1200 and S7-1500

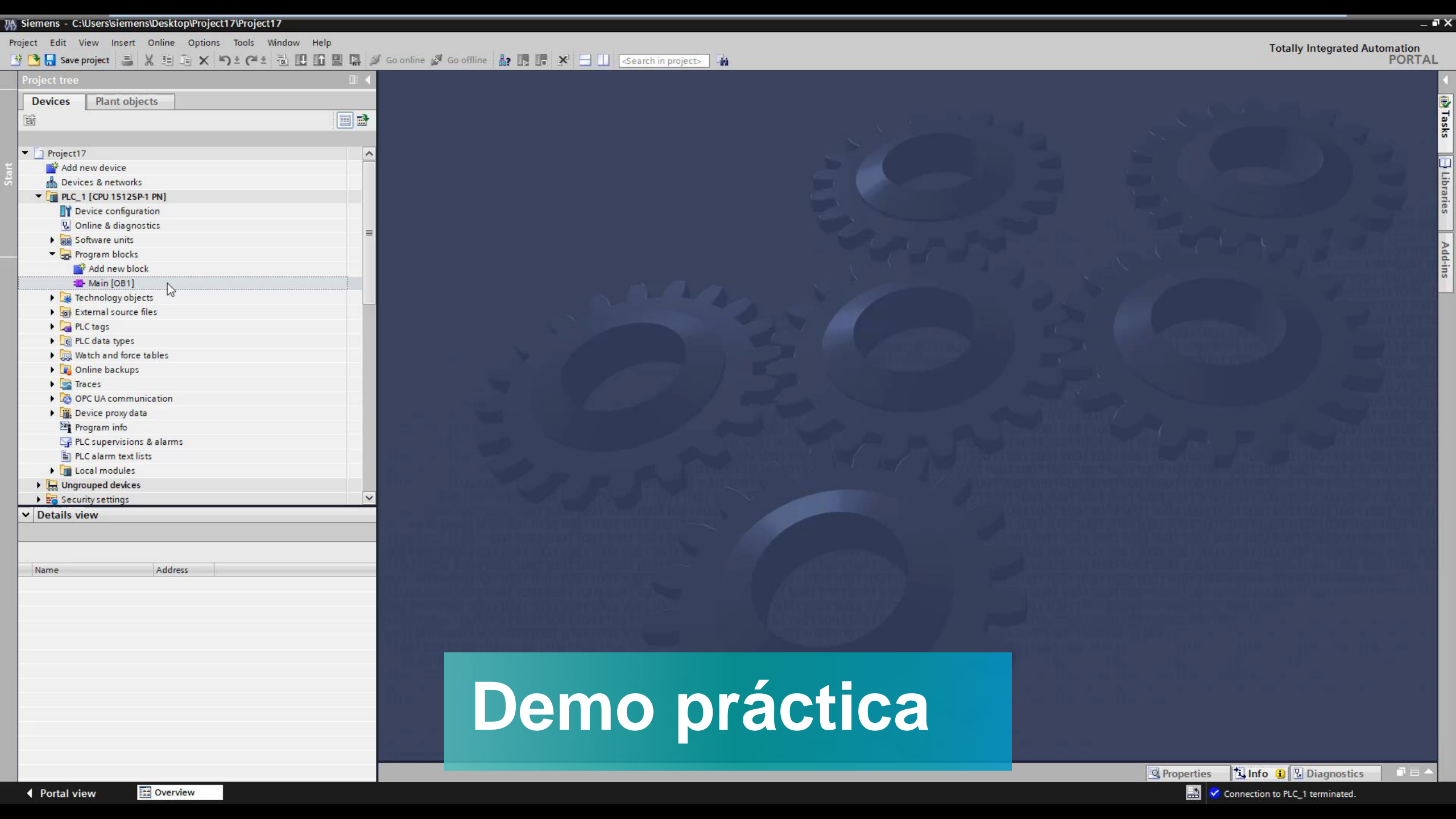
→ Provides solutions for both small and large installations

Group supervisions

→ Programming of M from N dependencies

Unique portfolio element

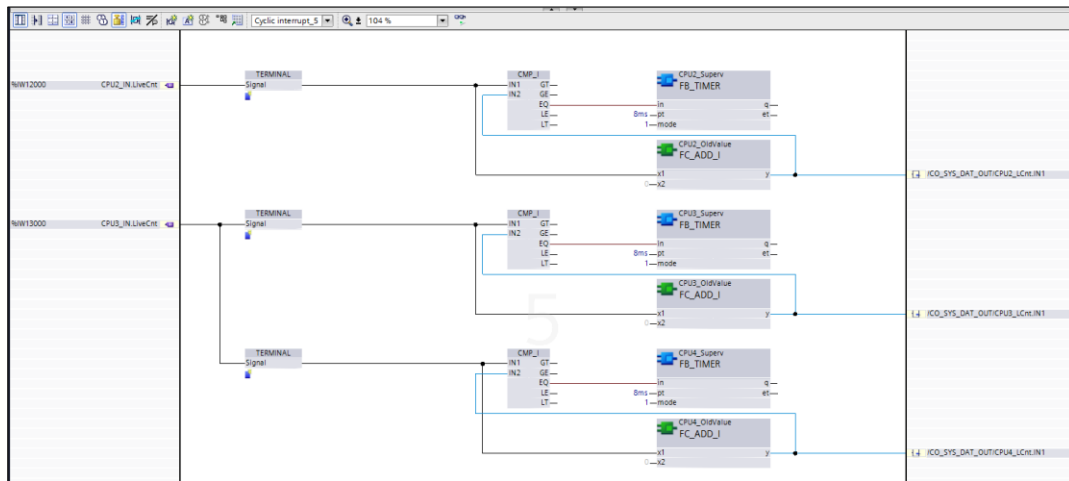
→ CEM, a new innovative programming language in TIA Portal



Demo práctica

TIA Portal V17

SIMATIC STEP 7 CFC V17



CFC for S7-1500

Graphical programming for S7-1500

→ **Signal flows easy to draw**

Integration of all other S7 programming languages

→ **Use of CFCs to call other blocks**

Drawing page technology

→ **Program structuring in max. 20 charts**

Use of chart-in-chart

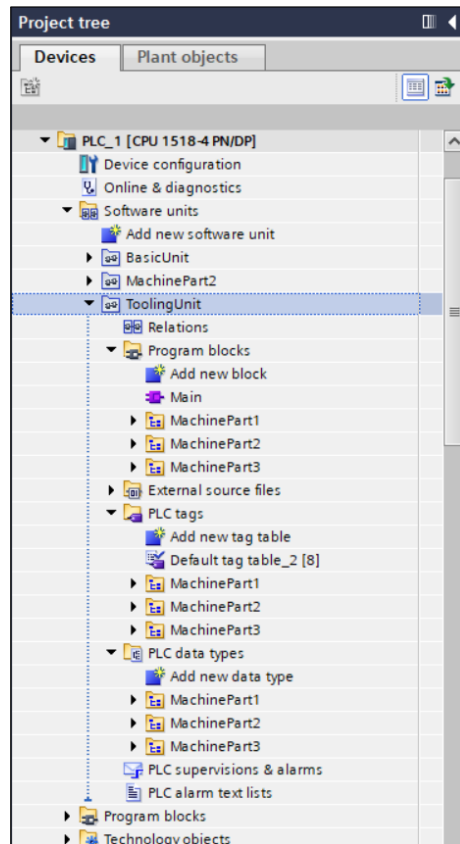
→ **Hierarchical structuring of the program portal**

Migration from TDC to S7-1500

→ **Re-use of customer expertise with CFC**

TIA Portal V17

Loading/uploading group structure to CPU



Function

During the download, the group structure (also under software units) for the following objects is also loaded onto the CPU:

- Program blocks
- PLC tags
- PLC data types

Restoration of group structure in offline project during:

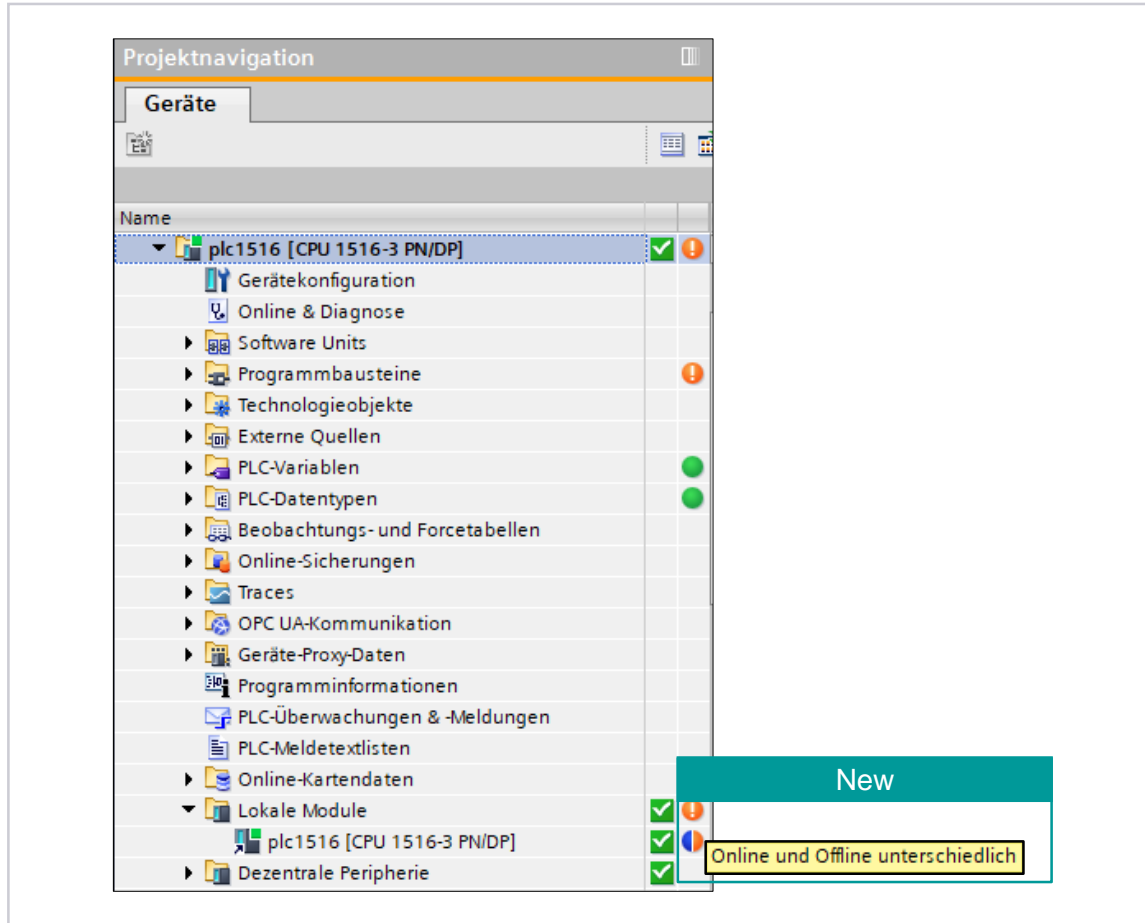
- Loading of CPU as new station
- Complete software upload (the offline program and the group structure are deleted and replaced by the online program)

Benefits

Access to group structure even when offline program is not available.

TIA Portal V17

Global offline/online comparison



Function

Comparison of compiled offline hardware configuration in TIA Portal with the online hardware configuration on the device:

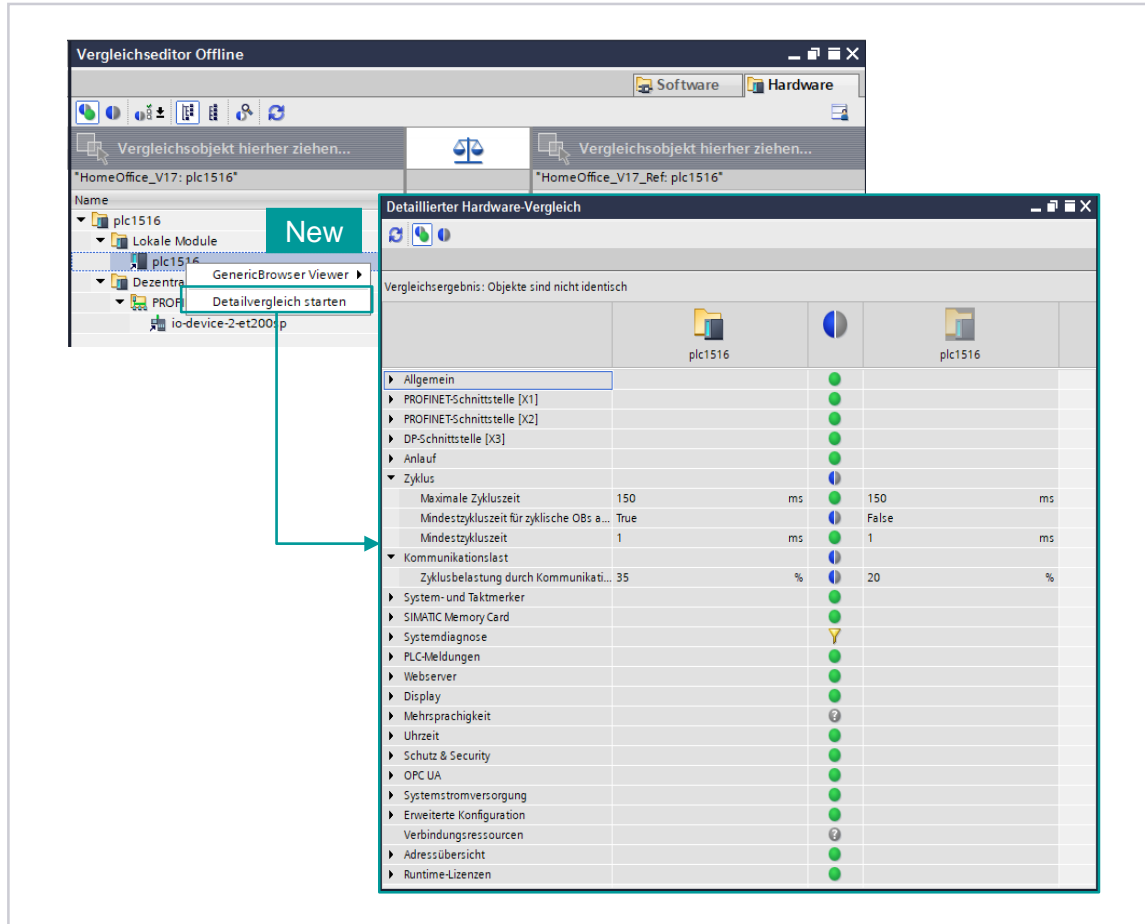
- Quick overview
- Distributed I/O for the PLC is taken into account
- Based on checksums and takes user inputs into account

Application

- Offline and online configurations are identical
- Offline and online configurations differ
- User inputs and compiled offline configuration differ:
 - Compiling the hardware configuration to apply changes
 - Unintentional inputs: "Undo" or re-open project

TIA Portal V17

Global offline/online comparison



Function

Comparison of two offline configurations at parameter level

- Allows the comparison of PLCs with the connected centralized/distributed I/O.
- Ideal for comparing the current configuration with a reference configuration.
- An indirect offline/comparison of the configuration at parameter level is possible using the intermediate step "Upload".

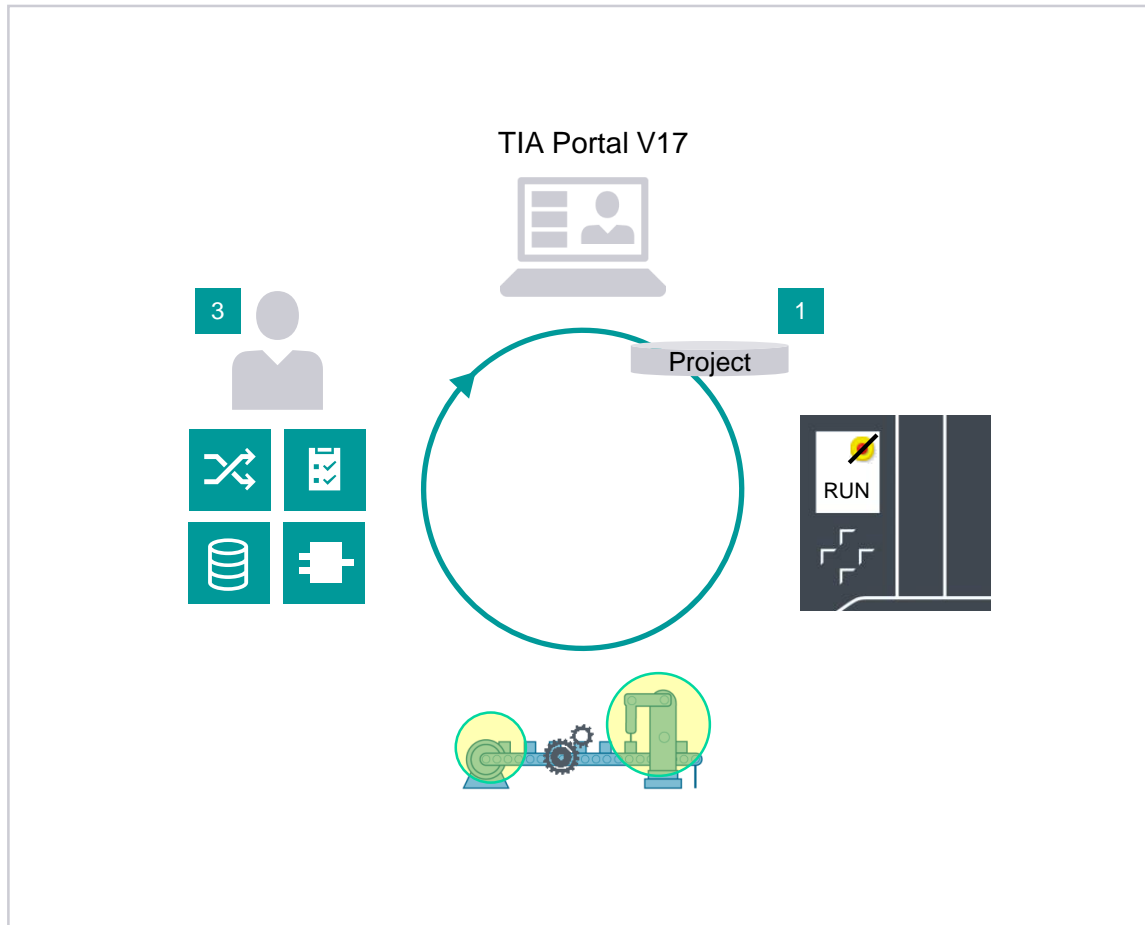
Note

Intended extensions:

- Filter options
- Assignment of parameters
- Supports further modules

TIA Portal V17

Safety - Fast Commissioning



Fast Commissioning workflow

1. Download prepared project to controller.
2. Deactivate Safety mode and activate Fast Commissioning mode
3. Perform adjustments in safety program during operation
4. Finalize project by full compile
5. Final download of the safety program
6. Activation of Safety mode and re-initialization by STOP – START of CPU

Benefits

- Increased efficiency when commissioning the safety program
- Shorter compile times during commissioning
- Adjustments of safety program during deactivated safety mode
- More control in case of time limited deactivated Safety mode

TIA Portal V17

Extended library functions – overview

Name	Status	Version	Author	Comment	Last change	Original library
Project library						
Types						
Add new type						
LAnyAxis						
LAxisCtrl						
LBC						
LBC_AnalogInput		V 1.0.0				
LBC_AnalogOutput		V 1.0.0				
LBC_AnalogScale		V 1.0.0				
LBC_Description		V 1.0.0				
LBC_DigitalSignal		V 1.0.0				
LBC_DriveControl_StdPlc		V 1.0.0				
V 1.0.0 [default]		V 1.0.0	Siemens Simat..	First Release	2/16/2021 5:24:39.201 PM	Standardization_Library_LBC
V 0.9.13		V 0.9.13	ConradM	adapted docu	2/16/2021 11:15:31.435 PM	Standardization_Library_LBC
V 0.9.12		V 0.9.12	ConradM	correct spelling mistakes	2/15/2021 10:01:58.367 PM	Standardization_Library_LBC
LBC_DriveControl_TecPlc		V 1.0.0				
LBC_MotorStarter		V 1.0.0				
LBC_StarDeltaStarter		V 1.0.0				
LBC_ThreeWayActuator		V 1.0.0				
LBC_TwoHandControl		V 1.0.0				
LBC_TwoWayActuator		V 1.0.0				
LBC_typeDiagnostics		V 1.0.0				
LBC_typeInterfaceCommands		V 1.0.0				
AnalogSignals						
DigitalSignal						
DriveControl						
LBC_typeDriveControlConfiguration		V 1.0.0				
LBC_typeDriveControlInterface		V 1.0.0				
V 1.0.0 [default]		V 1.0.0	Siemens Simat..	First Release	2/16/2021 5:24:39.478 PM	Standardization_Library_LBC
V 0.9.21		V 0.9.21	ConradM	correct spelling mistakes	2/15/2021 10:01:56.274 PM	Standardization_Library_LBC
LBC_typeDriveControlProcessValues		V 1.0.0				
V 1.0.0 [default]		V 1.0.0	Siemens Simat..	First Release	2/16/2021 5:24:39.493 PM	Standardization_Library_LBC
V 0.9.20		V 0.9.20	GeierB	Update UDTs	2/12/2021 11:53:00.288 AM	Standardization_Library_LBC

New functions

Easy development and maintenance of library types

- New filter functions for project library and global libraries
- Logic changes in the control program and comment changes do not require version adjustment of dependent types
- Change of type version behavior
 - The user can define a "default" type version for library types
 - The highest type version is thus no longer mandatory for library actions
 - The library functions (e.g. updating, ...) are executed on the "default" version
- Easy overview of the library status via status display
- Simple updating of selected types via the Global Library

Translating global libraries

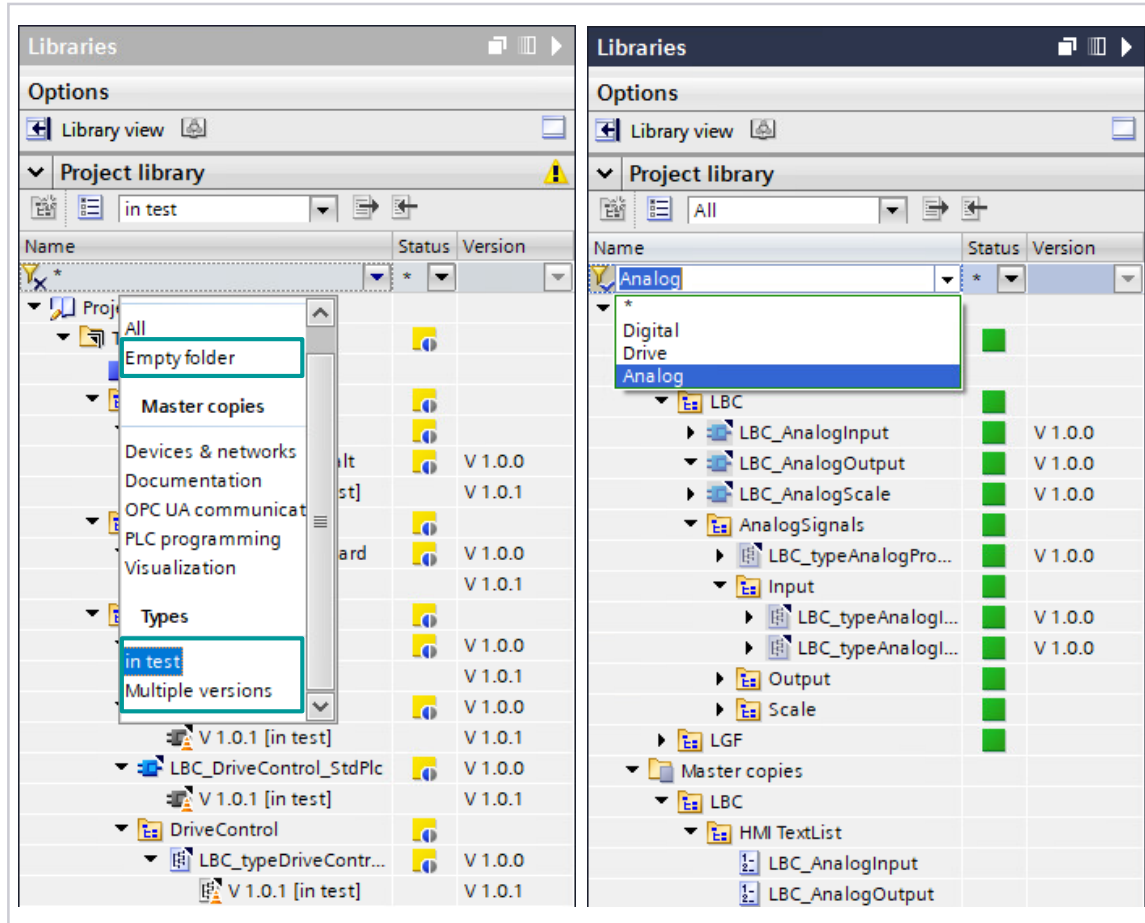
- When importing the translated types, a new version is created

Extended functions for creating copy templates

- When creating copy templates, the folder structures are retained

TIA Portal V17

Extended library functions – new filter functions

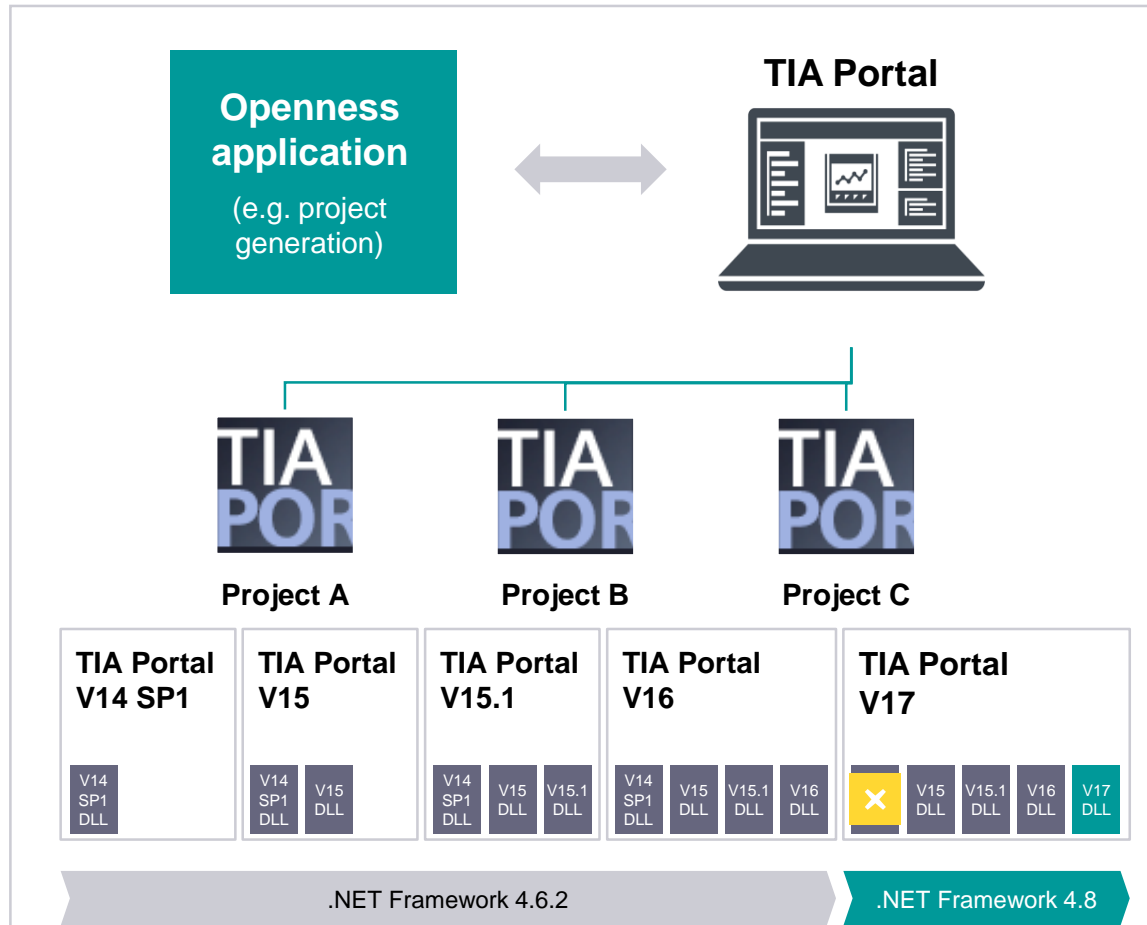


New filter functions for libraries

- New predefined library filters
 - Empty folder
 - "In test" types
 - Types with multiple versions
- Filter by text in entire library content
- All filter functions can be combined
- "Expand all" function for quick view of the filter result

TIA Portal V17

TIA Portal Openness



Extensions for project generation

- Creating instance DBs for FBs in the following languages:
 - As of V16: ProDiag
 - As of V17: LAD, FBD, IL/STL, SCL, Graph, Cause Effect Matrix (CEM)
- Write access to the OB attribute "PriorityNumber"
- Blocks or data types from "ExternalSourceGroup" can be generated directly into a subgroup
- Direct read access to DB tags and write access to their "StartValue" attribute

Benefits

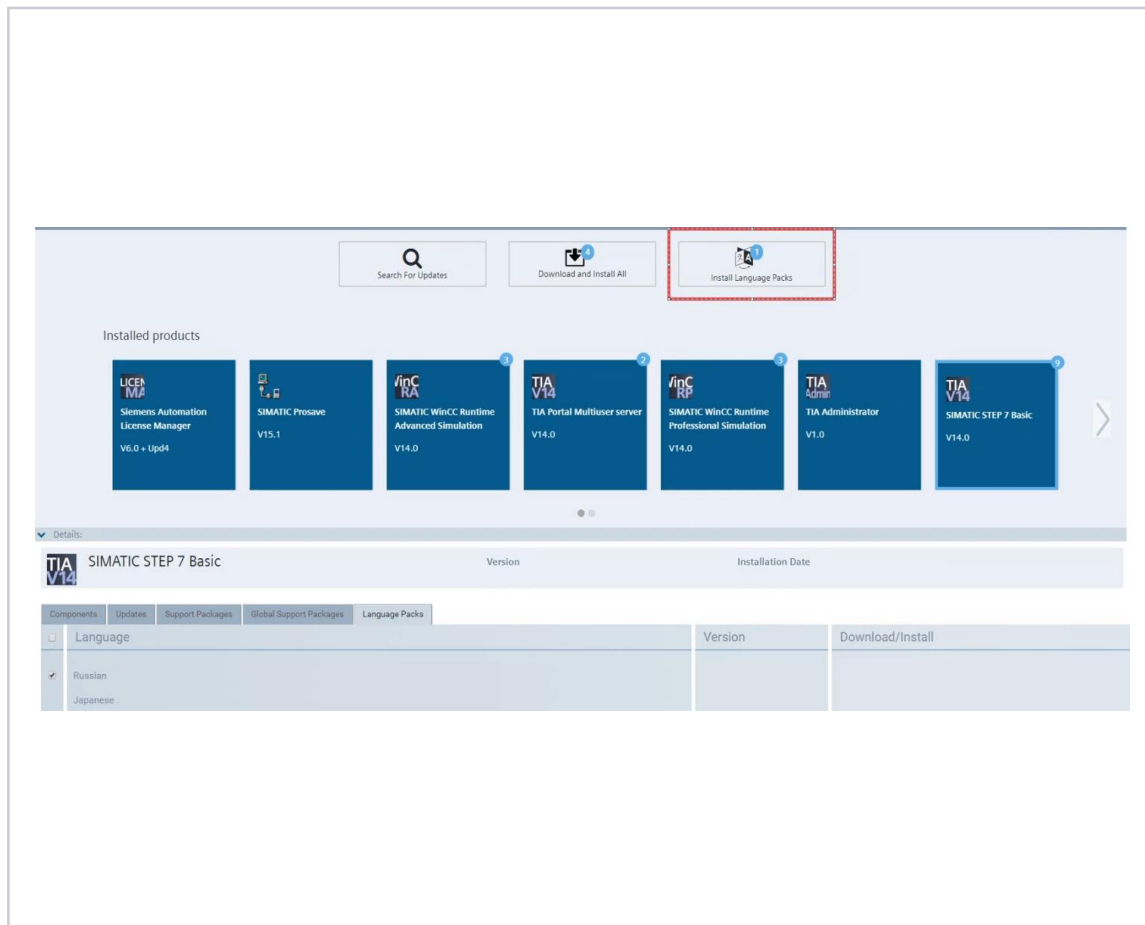
Using the new functions, the project generation workflows can be performed with a wider range using the Openness application.

This enables more efficient generation of TIA Portal projects.

TIA Portal V17

TIA Portal language packs

Language
Packs



In TIA Portal from Version 17, the following user interface languages are available via the TIA Administrator:

- French
- Italian
- Spanish

- Japanese¹
- Korean¹
- Russian¹

The languages

German – English – Chinese

are made available immediately during installation of the TIA Portal.

¹ online help in English

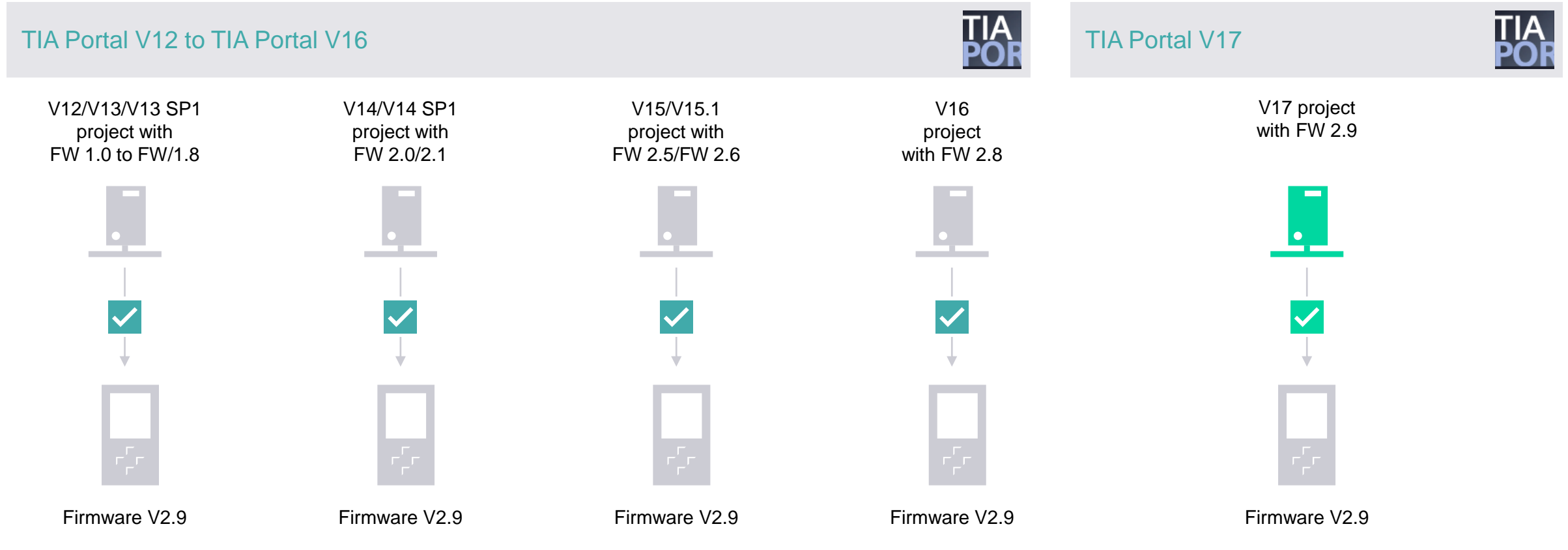



S7-1500 FW 2.9

Novedades

S7-1500 FW2.9

Spare parts compatibility S7-1500 and ET 200 CPUs – FW 2.9 with older TIA Portal versions

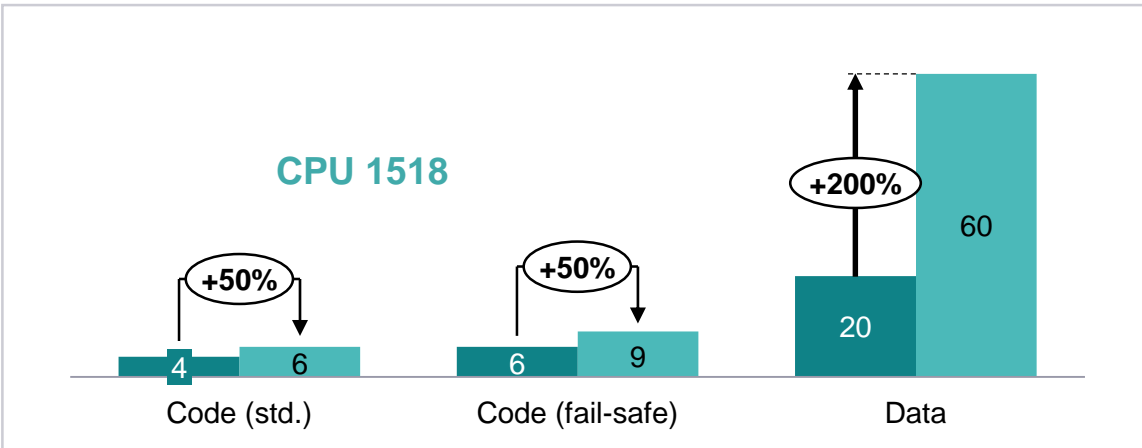


Full spare part functionality: Online support: ID 109744163 

New functions can be used with TIA Portal V17 and firmware V2.9

S7-1500 FW2.9

CPU 1518 with extended configuration limits



■ TIA Portal V16 (FW 2.8) ■ TIA Portal V17 (FW 2.9)

CPU 1518 with existing hardware inf TIA Portal V17:

- **+50%** program memory
- **+200%** data memory

for applications with enhanced requirements regarding code memory and data memory

Increase in configuration limits for ET 200 and S7-1500 CPUs:

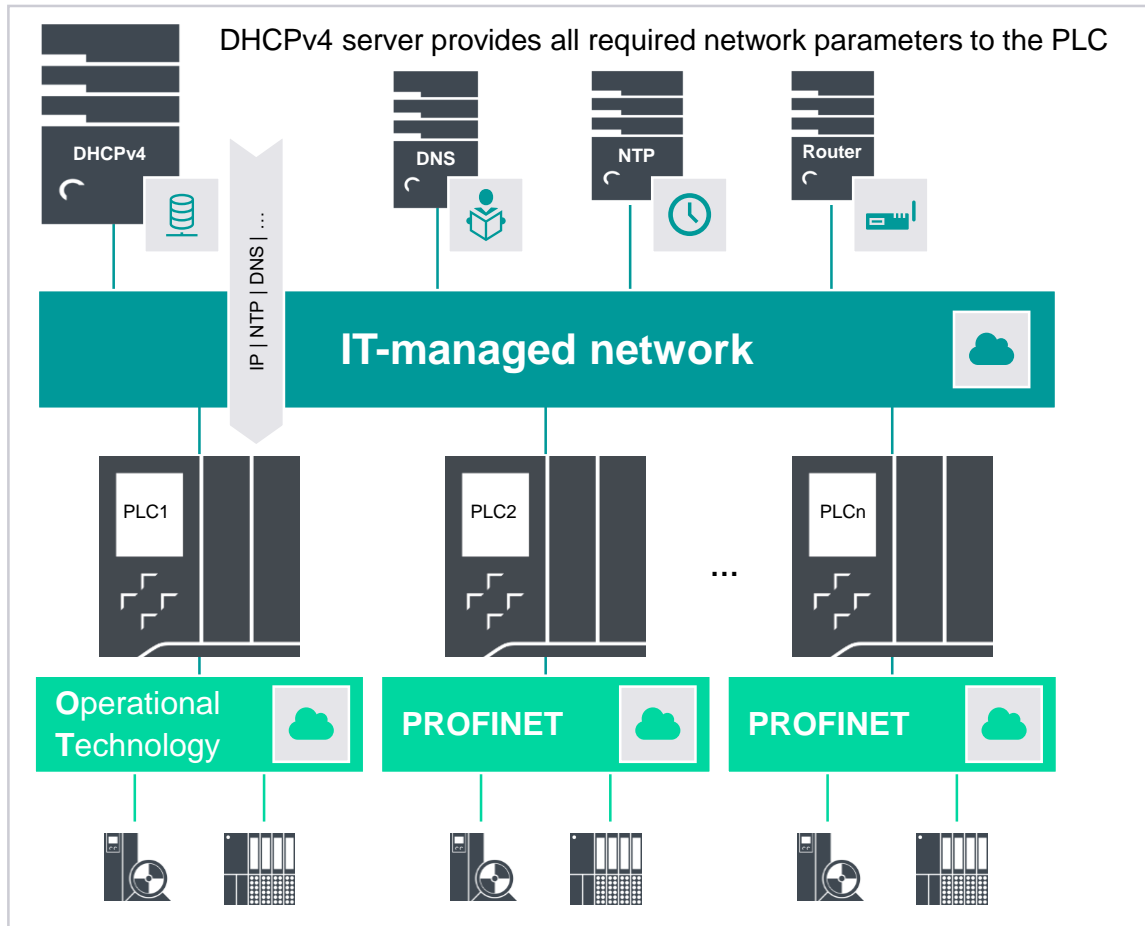
- 128 UDP multicast circuits for the CPUs 1517/1518
- Increase in the number of blocks for the controllers CPU 1510SP up to CPU 1515 (including CPU 1513R/1515R)
Details are described in the technical specifications of each CPU

Benefits

Extensions e.g. for the usage of **structured** programming

S7-1500 FW2.9

DHCP - Dynamic assignment of the network configuration



DHCP – Dynamic Host Configuration Protocol

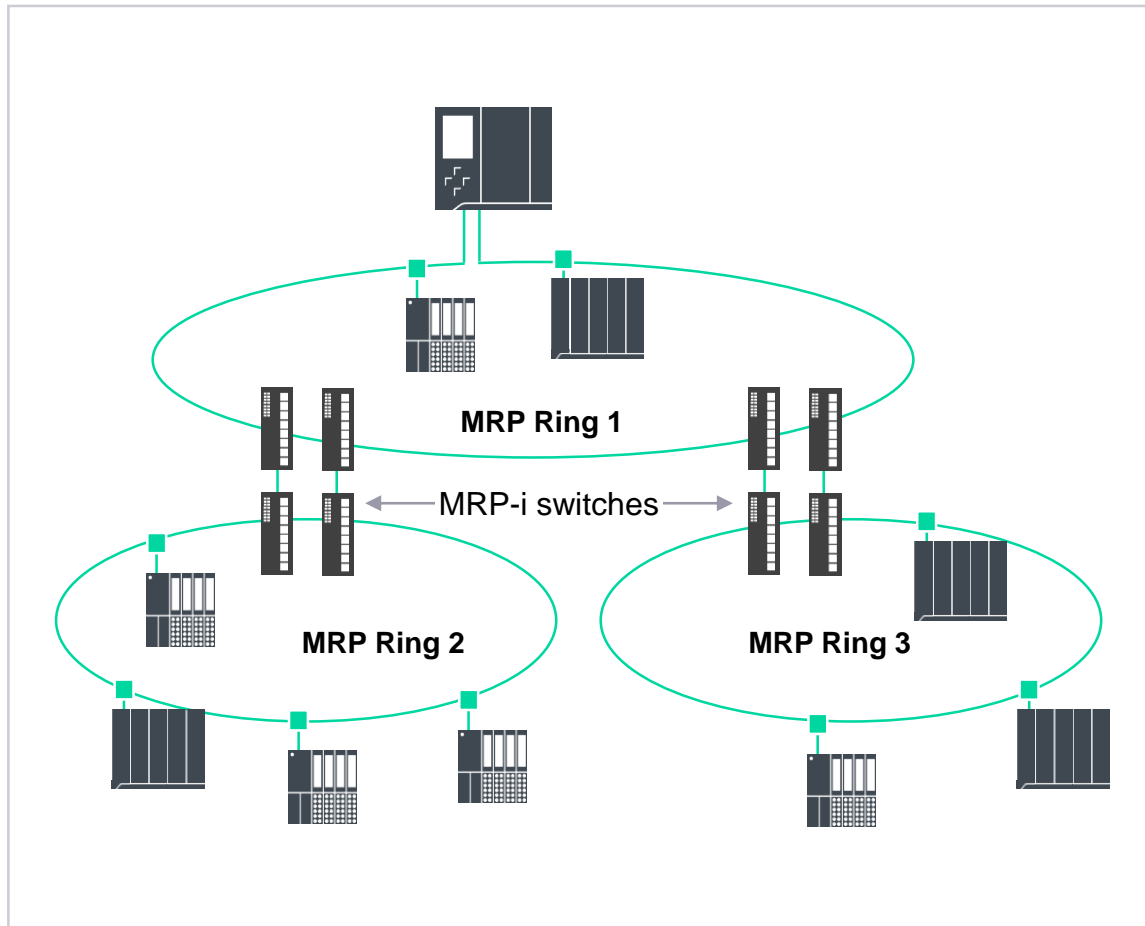
- **New:** The CPU can be connected to an existing network without additional manual configuration of the CPU's network interface.
- **New:** The CPU can request network parameters from a DHCPv4 server according to RFC2131:
 - IP address and subnet mask
 - Default IP router address
- Optional:
 - DNS server addresses
 - NTP server addresses
 - Host and/or domain name¹

Possible application areas

- Use of the CPU in IT-managed networks.
- Modular design of production plant (plug & produce)

¹ Parameters can also be supplied to the DHCP server by the CPU

S7-1500 FW2.9 Supports MRP Interconnect



MRP (Media Redundancy Protocol) Interconnect switches enable the coupling of multiple MRP rings

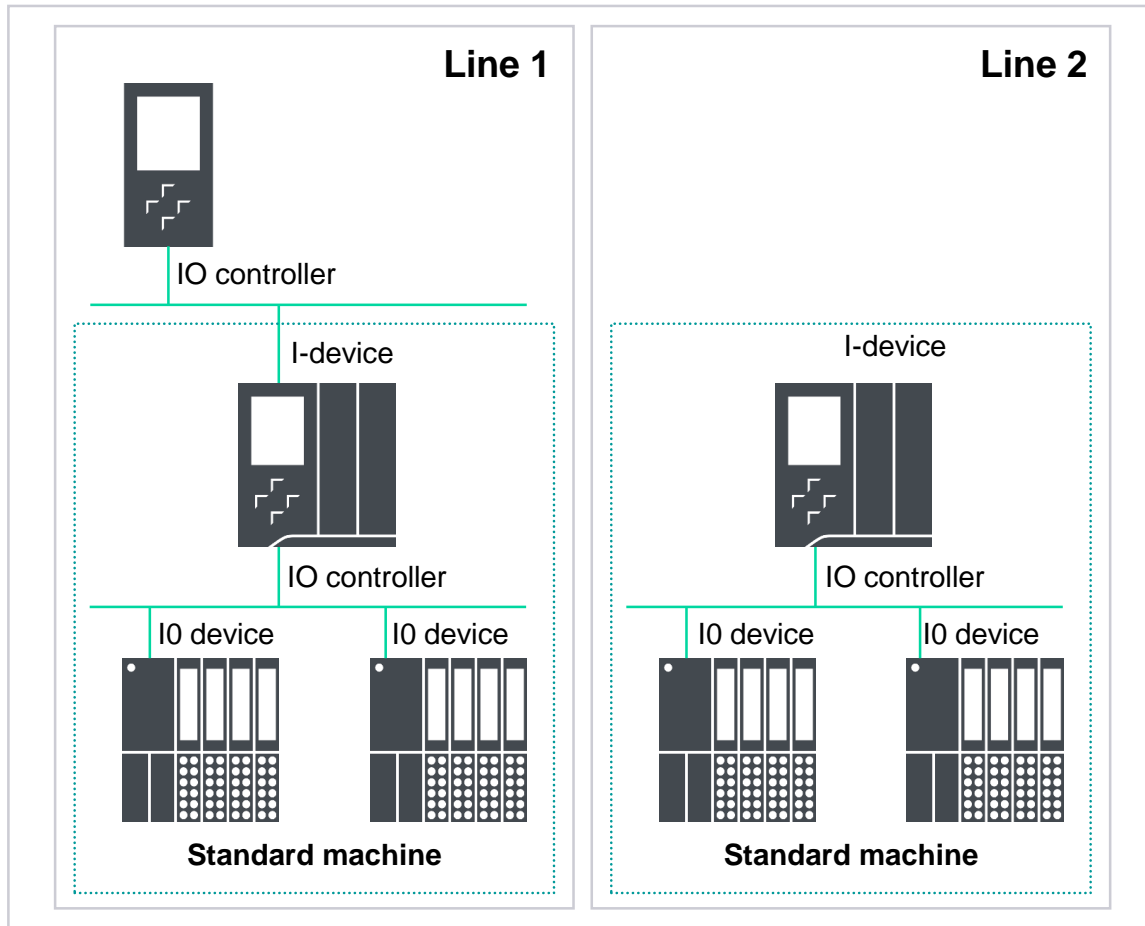
- Thanks to the redundant switch architecture, the coupled network is still able to function even if a switch fails
- Coupling of up to 11 MRP rings
- Can be used with the following SCALANCE switches:
XR500, XM400, XC200, XF204-2BA, XP200

Advantage

In total, more accessible devices can be operated on MRP rings

S7-1500 FW2.9

Deactivating/activating the I-device in the user program



- The I-device configuration of a CPU can be deactivated or re-activated by using the instruction "D_ACT_DP"
- If the IO controller is not available, the I-device CPU does not longer indicate an error via its ERROR LEDs (if the I-device function is deactivated by the user program)
- Pre condition: TIA Portal V17, CPU FW V2.9, CM 1542-1 FW V3.0

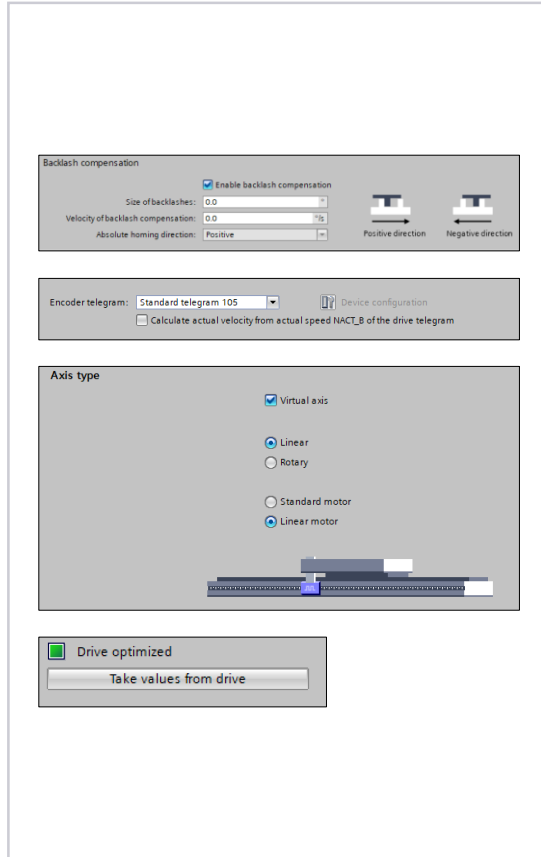
Customer benefits

- All standard machines have a uniform user program, regardless of whether there is an IO controller at the deployment site
- No annoying/confusing ERROR LED display

S7-1500 FW2.9

Motion Control - Extended functions on technology object axis

S7-1500 and S7-1500 T-CPU



Feature/function

Backlash compensation – compensate backlash in mechanics

Apply actual speed (NIST) from PROFIdrive telegram

Connection and configuration of linear motors

Automatic optimization of the axis

Extended functions of the drive and encoder connection via data blocks

Benefits

Increase in motion precision without additional programming effort

The speed determined in the drive is used for control. This helps achieve better control quality, especially for encoders with low resolution.

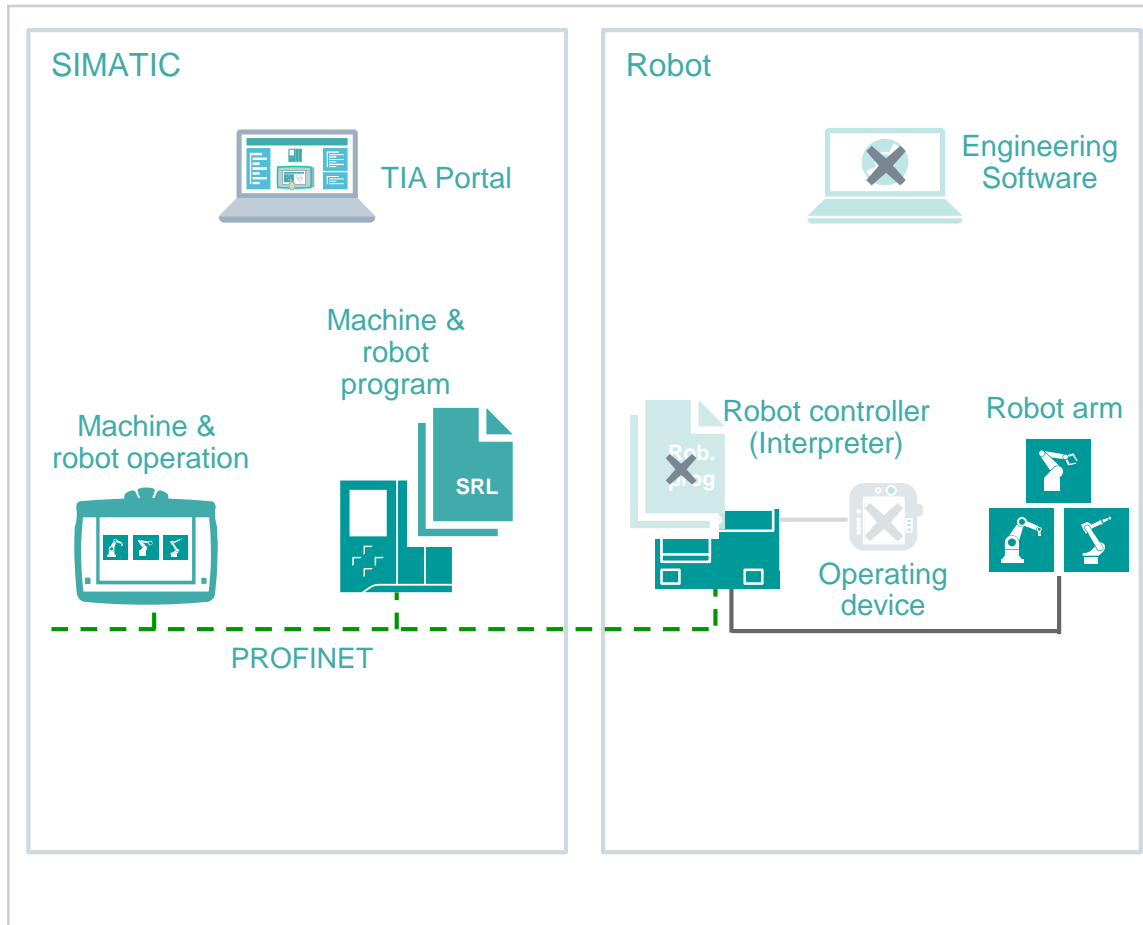
- Can be used for electric linear or hydraulic drives
- Unit of measurement "Force (N)" can be configured on the axis

- Automatic optimization of the axis with just a few clicks
- Optimization of the drive can be initiated in Startdrive and the parameters that are determined can be adopted automatically for the position controller.

Extension of programming options by using arrays and structures for connection via DBs

SIMATIC Robot Library

Robot programming in TIA Portal



Robot programming in TIA Portal with the SIMATIC Robot Library

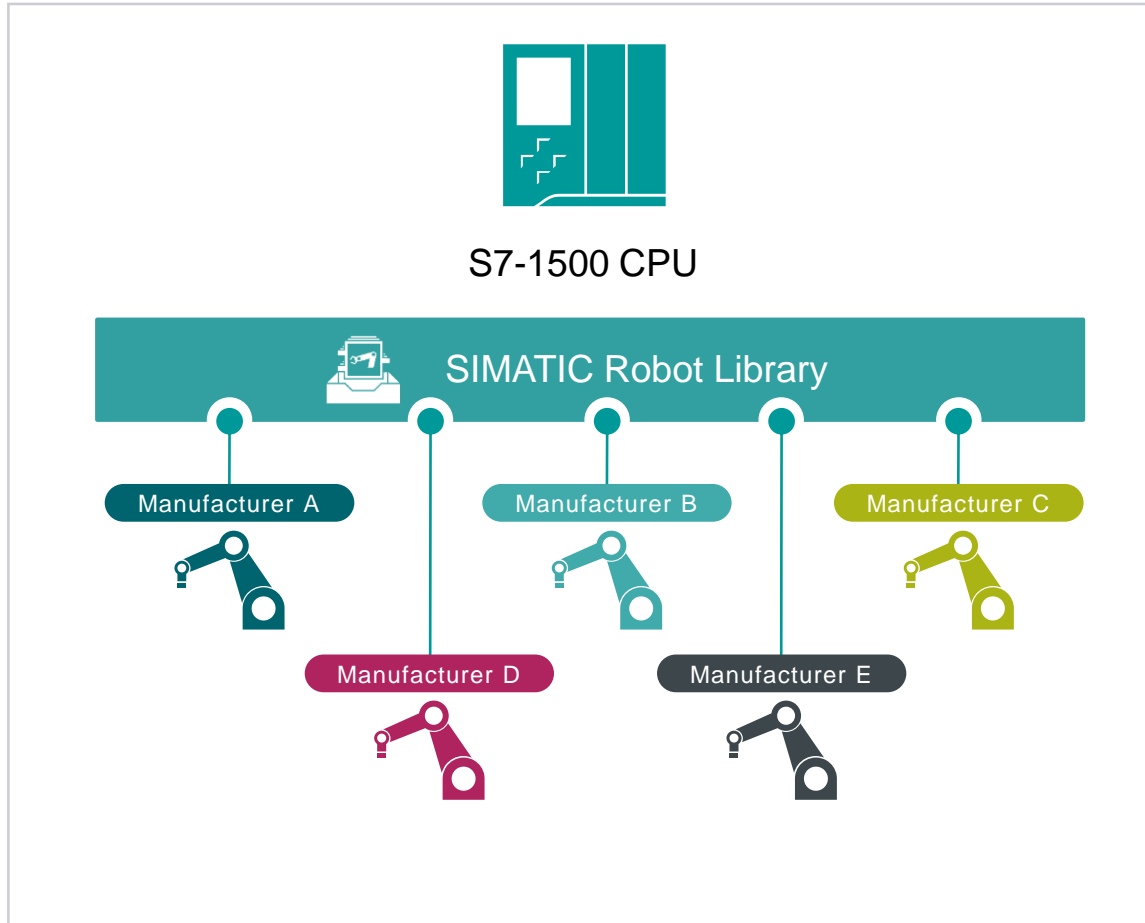
- One library to program robots of various brands within TIA Portal
- Will be based on a coming PNO Standard for robotics.
- Will be based on coming PLCopen certification for robotics
- Functions range from basic move commands (e.g. "MoveLinear") to advanced commands (e.g. "ForceControl")
- Library communicates with an interpreter on the robot controller
- Library is developed by Siemens while interpreter is developed by respective robot manufacturer

Customer Benefits

- Standardization for the robotics market
- Seamless programming auf robot and machine, no additional integration
- Uniform operation and engineering environment for PLC and robots
- Manufacturer-independent robot programming
 - No robot-specific programming experience required
 - Robot program is reusable for different robot vendors by just exchanging the connected robot
- Gateway for various, manufacturer-independent robotics solutions for all branches

SIMATIC Robot Library

One interface for all robot manufacturers



Unified programming of robots of various brands

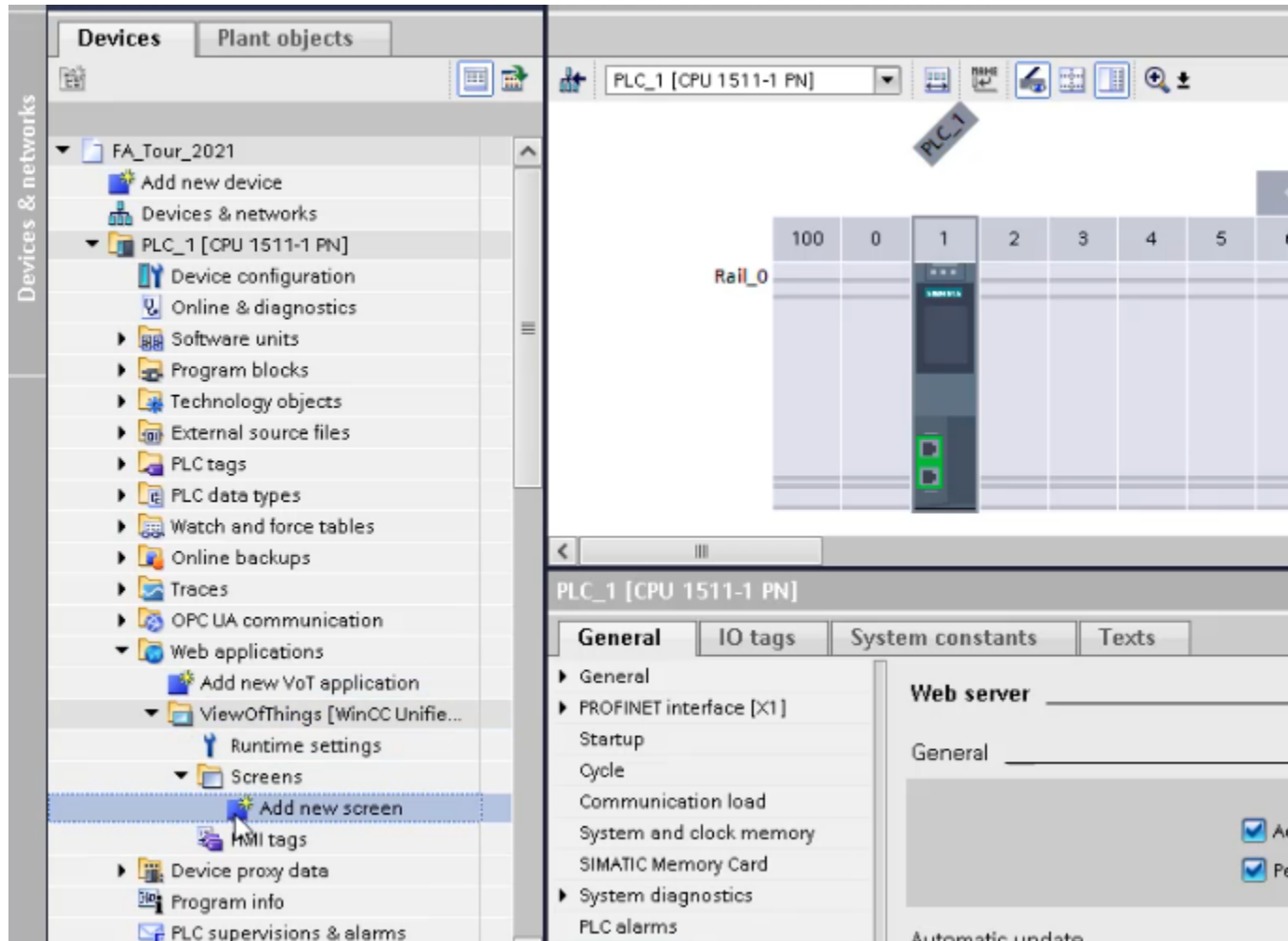
- All functions of the library were designed in close cooperation with multiple robot manufacturers
- Several of them have already confirmed the release date for their interpreter
- Currently* confirmed robot manufacturers
 - COMAU (Release: 04/2021)
 - STÄUBLI (Release: 05/2021)
 - UNIVERSAL ROBOT (Release: 09/2021)
 - KAWASAKI (Release: 10/2021)
 - KUKA (Release: 12/2021)
 - ABB (Release: 12/2021)
- Not yet confirmed robot manufacturers
 - EPSON
 - FANUC
 - PANASONIC
 - TECHMAN
 - YAMAHA
 - YASKAWA

** These confirmations are based on robot manufacturer statements!*

<https://support.industry.siemens.com/cs/ww/es/view/109796509>

S7-1500 FW2.9

WinCC Unified View of Things



Basic objects & Elements
(e.g. I/O field, button, gauge)

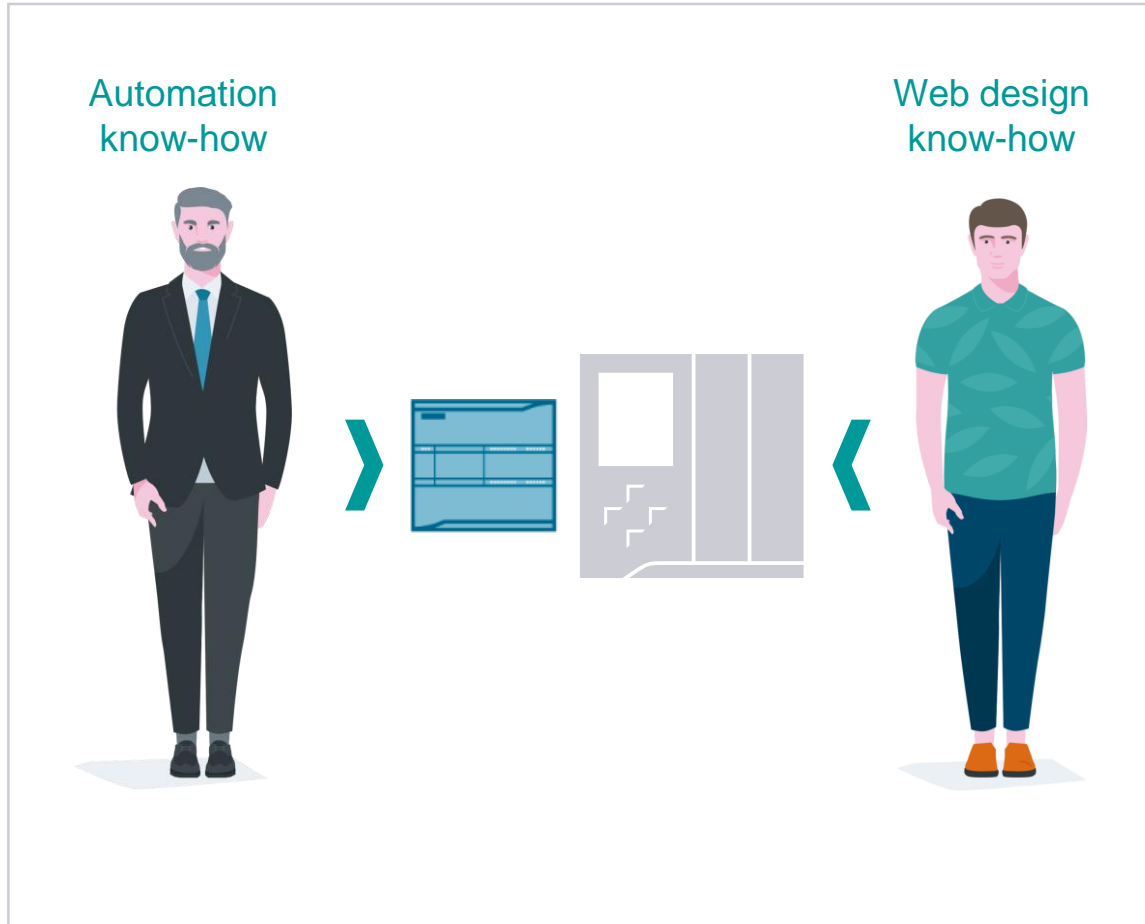
Graphics (incl. Dynamic SVG) as well as Screen
Windows to build screen architecture

Basic Scripting functionality with JavaScript in
screens

User Management with the S7-1500 Webserver

S7-1500 FW2.9 y S7-1200 FW 4.5

Web server innovations



Function

Loading user-defined web pages to the PLC without TIA Portal:

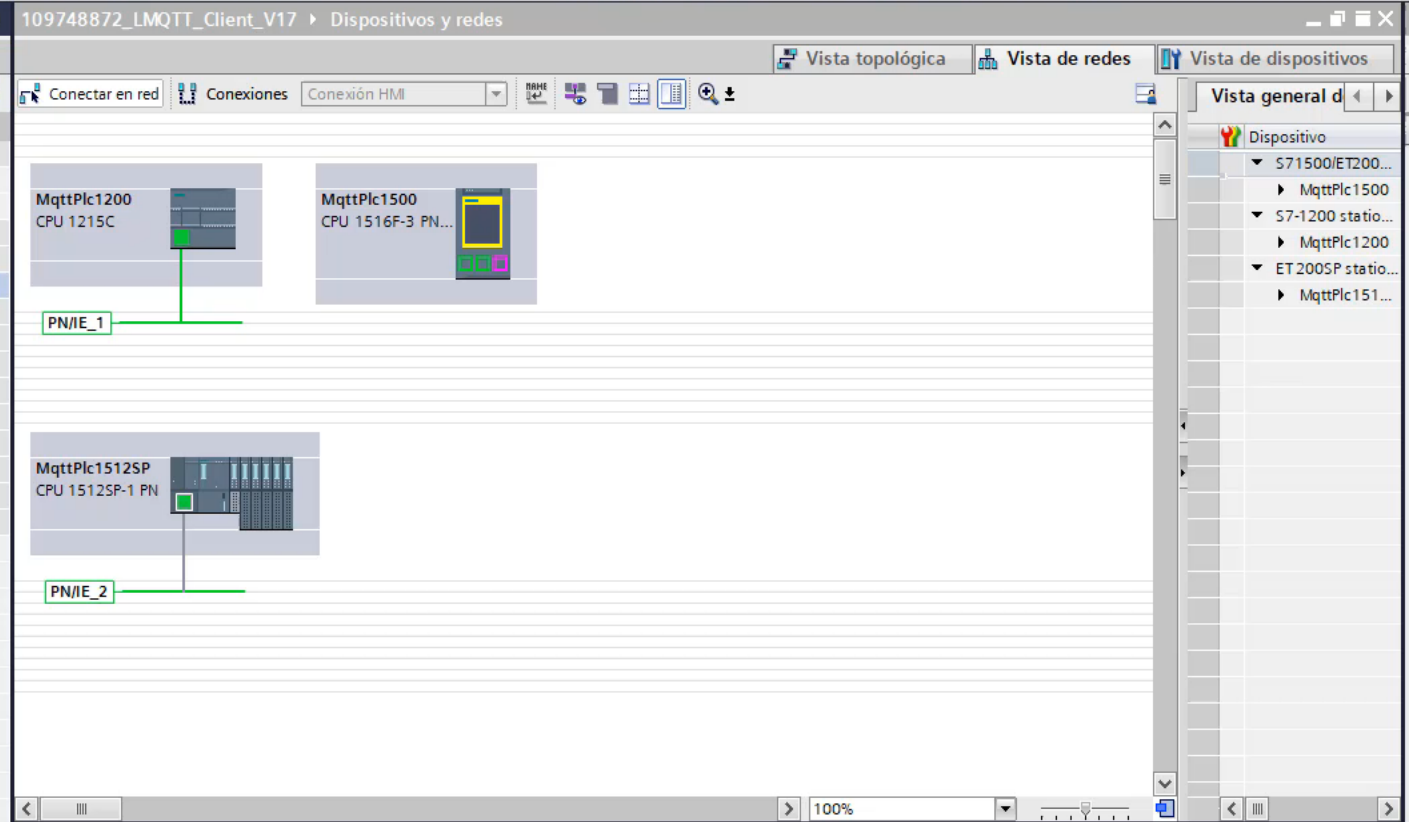
- New "Handle user-defined web pages" function right in the PLC's hardware properties register in TIA Portal
- Files can be transferred via the new JSON RPC 2.0 API
- Creating user-defined web pages without DB generation in TIA Portal
- User-defined web pages are stored on the PLC's load memory

Benefits of the function

- File transfer and update of user-defined web pages **without STOP → RUN**
- Better separation of domains Automation and web design
- Enables more wide ranging and technically sophisticated user-defined web pages The memory size of the application is only limited by the size of the memory card in the S7-1500 or by the load memory of the S7-1200
- Compatibility of spare parts is ensured as all previous mechanisms are still supported

Dispositivos Plant objects

- 109748872_LMQTT_Client_V17
 - Agregar dispositivo
 - Dispositivos y redes
 - MqttPlc1200 [CPU 1215C DC/DC/DC]
 - MqttPlc1500 [CPU 1516F-3 PN/DP]
 - MqttPlc1512SP [CPU 1512SP-1 PN]
 - Dispositivos no agrupados
 - Configuración de seguridad
 - Funciones para varios dispositivos
 - Datos comunes
 - Configuración del documento
 - Idiomas y recursos
 - Version Control Interface
 - Accesos online
 - Lector de tarjetas/memoria USB



Catálogo de hardware

Opciones

Catálogo

<Buscar>

Filtro Perfil: <Todos>

- Controladores
- HMI
- Sistemas PC
- Accionamientos y arranquadores
- Componentes de red
- Lectura y monitorización
- Periferia descentralizada
- Alimentación y distribución de corriente
- Dispositivos de campo
- Otros dispositivos de campo

Información

Dispositivo:

Referencia:

Versión:

Propiedades Información Diagnóstico

General Referencias cruzadas Compilar

Mostrar todos los avisos

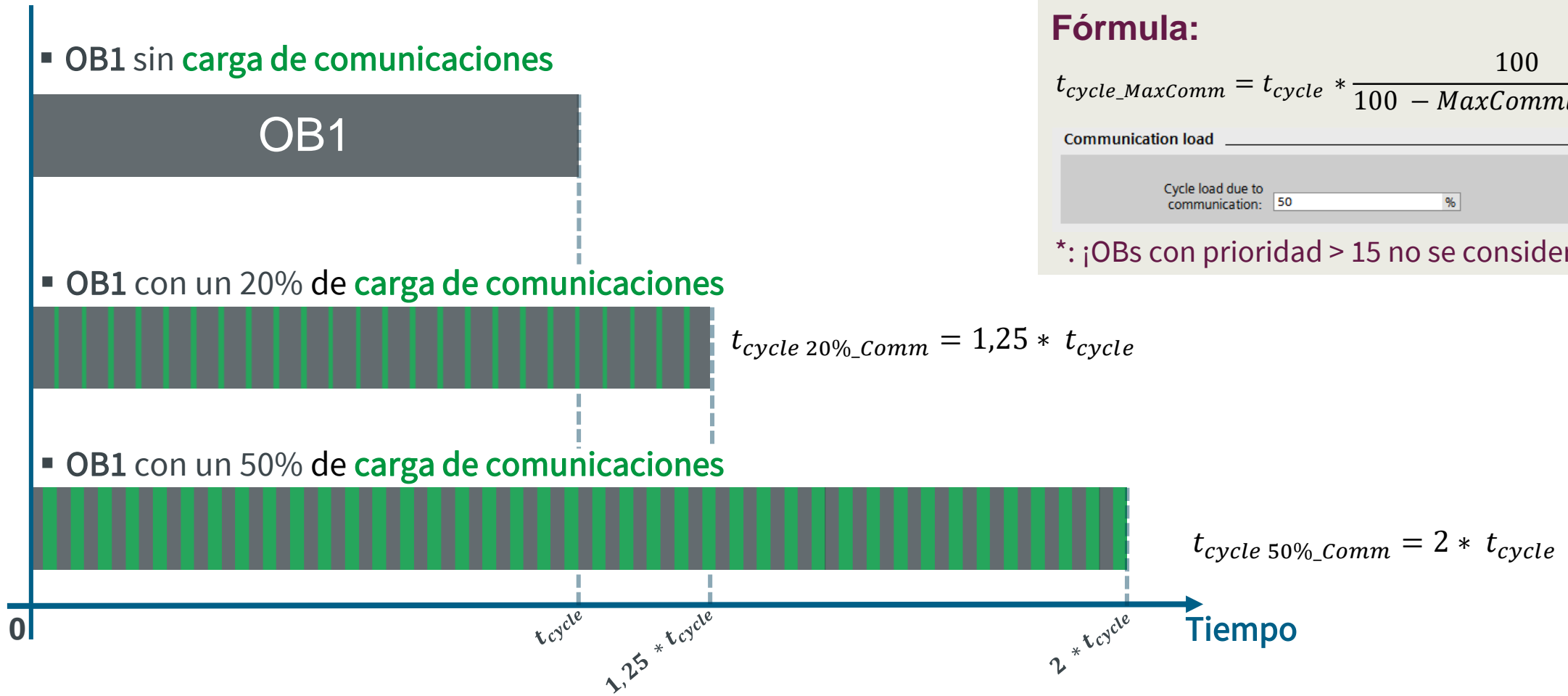
Compilación finalizada (errores: 0; advertencias: 0)

!	Ruta	Descripción	Ir a	?	Fallos	Adverten...	Hora
!	MqttPlc1512SP		↗	?	0	0	12:31:04
!	Configuración hardware		↗	?	0	0	12:31:04
!	Bloques de programa	El hardware no se ha compilado. La configuración es actual.	↗	?	0	0	12:31:05
!		No se ha compilado ningún bloque. Todos los bloques están...	↗	?	0	0	12:31:05
!			↗	?	0	0	12:31:05
!			↗	?	0	0	12:31:05

Demo práctica

S7-1500 FW2.9 y S7-1200 FW 4.5

Carga de comunicaciones



Fórmula:

$$t_{cycle_MaxComm} = t_{cycle} * \frac{100}{100 - MaxCommloadConf}$$

Communication load

Cycle load due to communication: %

*: ¡OBs con prioridad > 15 no se consideran!



S7-1200 FW 4.5

Novedades

S7-1200 FW 4.5 Spare Parts Compatibility

TIA Portal V12 to TIA Portal V16

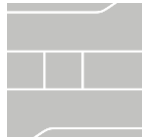


V12/V13/V13 SP1
project with
FW 1.0 to FW3.0



Firmware V4.5

V14/V14 SP1
project with
FW 4.0/4.1



Firmware V4.5

V15/V15.1
project with
FW 4.2/FW 4.3



Firmware V4.5

V16
project
with FW 4.4



Firmware V4.5

TIA Portal V17



V17 project
with FW 4.5



Firmware V4.5

Latest firmware version release: [Online support: ID 109771672](#)



New functions can be used with TIA Portal V17 and firmware V4.5

S7-1200 FW 4.5

Web server innovations



Function

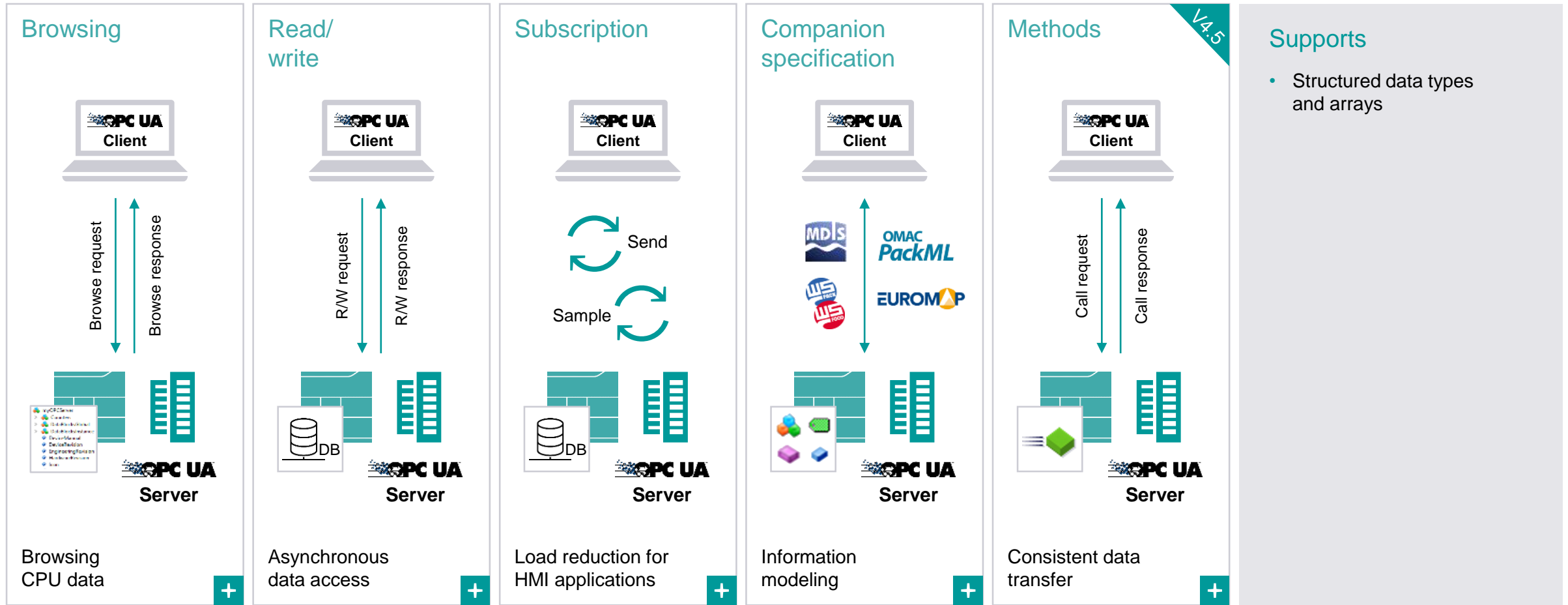
- Web server with JSON RPC2.0 as new "web data interface" for access to web server data such as
 - Process values (tag values)
 - CPU status and diagnostics data (in some cases)
- CPU web server response in JSON format

Advantages of the function

- Future basis for "state-of-the-art" creation of user-defined web pages
- JSON as web-compliant data format for simple linking to web data consumers, e.g. MES systems, SCADA systems
- JSON as a stable data format for accessing web server data, i.e. no adjustment of web client code (e.g. Java Script code) needed after firmware update
- Spare part compatibility as the new web data interface can be used in addition to the current options

S7-1200 FW 4.5

OPC UA – extended range of functions



S7-1200 FW 4.5

OPC UA – OPC UA server diagnostics in TIA Portal

Session/subscriptions diagnostics

Id	Name	Endpoint URL	Subscriptions	Monitored Items	Timeout	Last conta...
1880316684	urn:md2b0e6c:UnifiedAutomatio...	opc.tcp://192.168.2.11:4840	2	9	472 of 3000ms	2011-Dec...
2447554996	Subscription_2447554996		1	14 of 300		
2447554999	Subscription_2447554999		8	0 of 300		
472389832	urn:md2b0e6c:UnifiedAutomatio...	opc.tcp://192.168.2.11:4840	2	9	451 of 3000ms	2011-Dec...
2447554997	Subscription_2447554997		1	25 of 300		
2447554998	Subscription_2447554998		8	0 of 300		
3529949163	urn:md2b0e6c:UnifiedAutomatio...	opc.tcp://192.168.2.11:4840	2	9	427 of 3000ms	2011-Dec...
2447555000	Subscription_2447555000		1	4 of 300		
2447555001	Subscription_2447555001		8	0 of 300		

Connection resources

	Station resources				Module resources		
	Reserved		Dynamic		CPU 1215C D0D/QDC (R0...		
Maximum number of resources:	34	34	34	34	68	68	
	Maximum	Configured	Used	Configured	Used	Configured	Used
PG communication:	4	-	1	-	0	-	1
HMI communication:	12	0	0	0	0	0	0
S7 communication:	8	0	0	0	0	0	0
Open user communication:	8	0	0	0	0	0	0
Web communication:	2	-	0	-	0	-	0
OPC UA Client/Server communica...	0	-	0	-	1	-	1
Other communication:	-	-	0	0	0	0	0
Total resources used:	0	1	0	0	1	0	2
Available resources:	34	33		34	33	68	66

Additional diagnostic buffer entries for OPC UA server

- Activation/deactivation of the OPC UA diagnostic information by user in the CPU properties
- Summary possible in the event of message burst of diagnostic messages relevant to OPC UA and just one appearance in diagnostics buffer

Benefits

Faster analysis of information relevant to OPC UA in the event of an error

OPC UA diagnostic information in TIA Portal

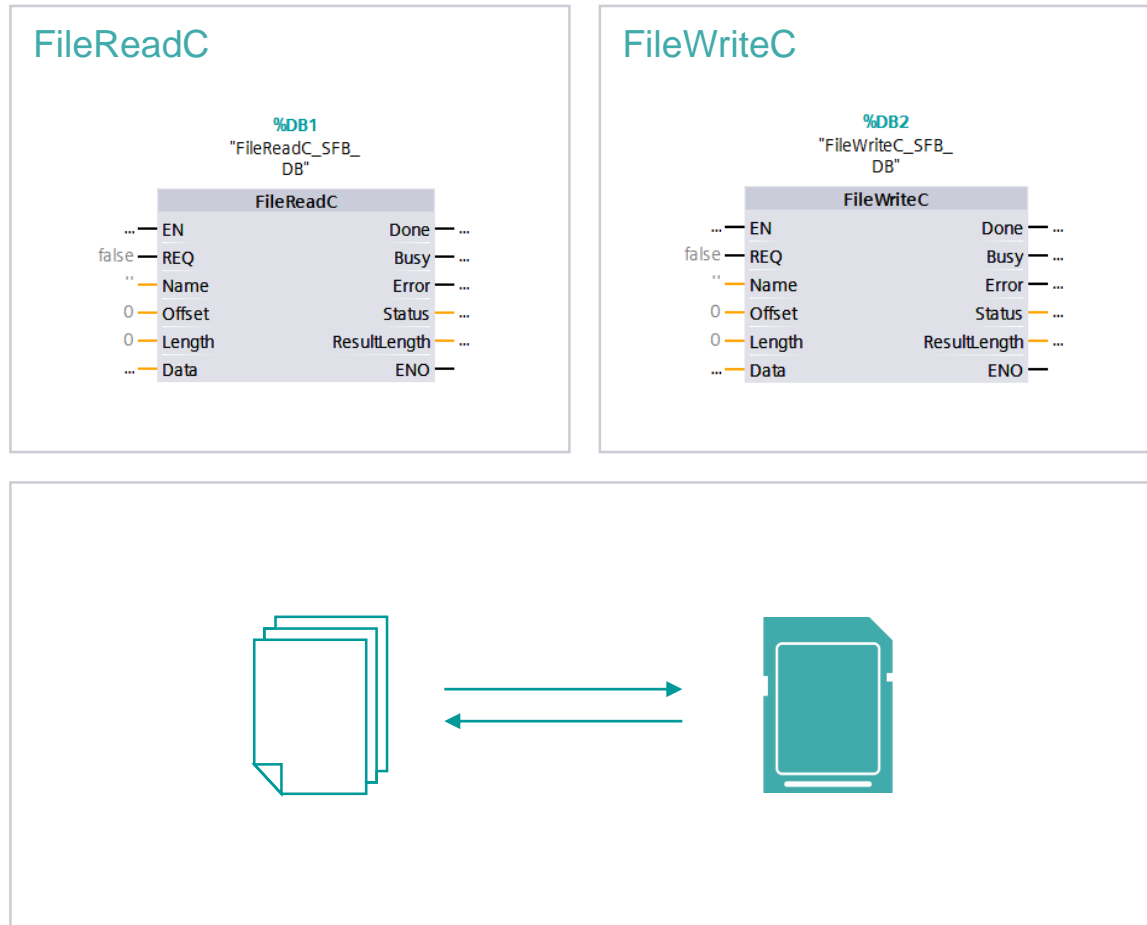
- Display of additional information concerning the OPC UA server via "Online & Diagnostics" on the CPU
- Provision of information on session and monitored items via "Sessions"
- Visualization of the number of OPC UA resources used in "Connection resources" in TIA Portal

Benefits

Additional diagnostic information available for fast and efficient error detection concerning OPC UA

S7-1200 FW 4.5

Import and export of ASCII files (files in binary format)



Function

- Read data from an ASCII file of the SIMATIC memory card, for example
- Write data to an ASCII file onto the SIMATIC memory card, for example
- Deletes a file – "FileDelete"

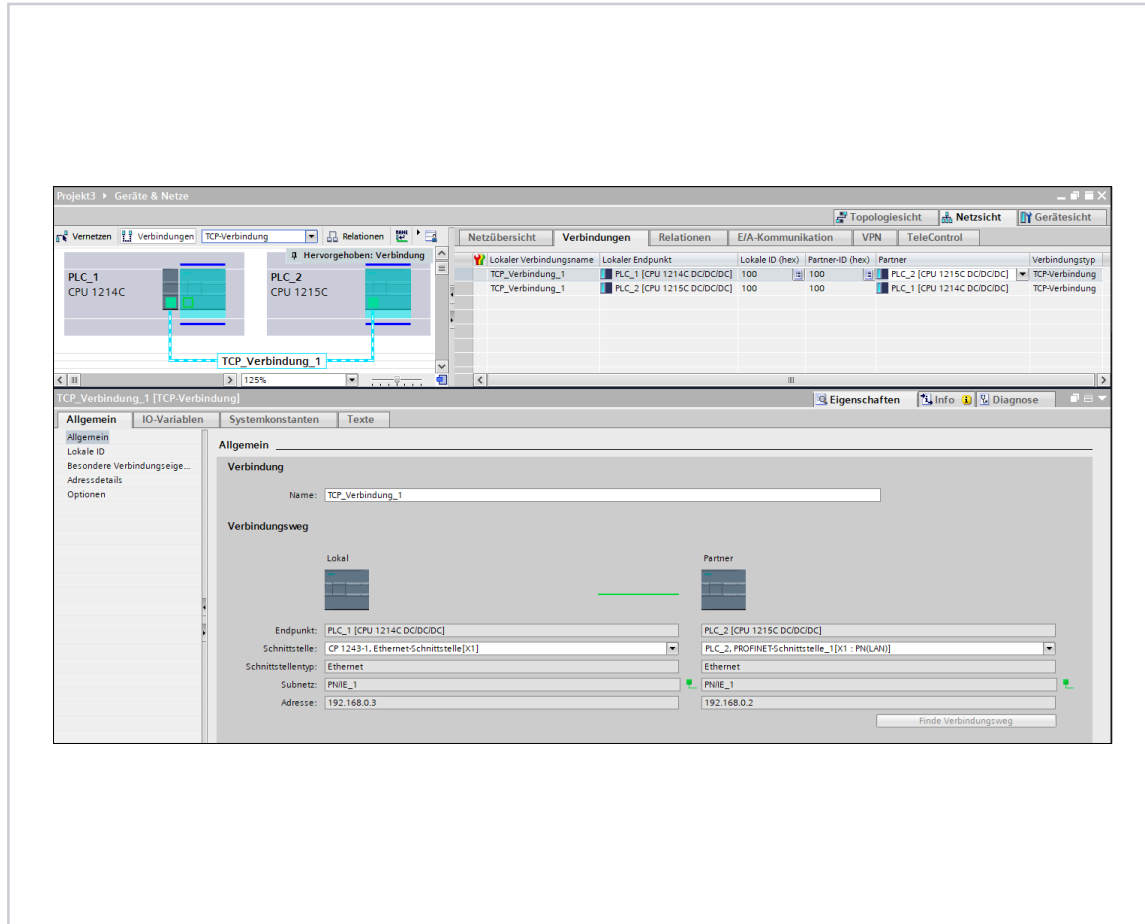
Customer benefits

Complex file structures are used in the free ASCII format on the SIMATIC memory card, e.g. to

- read in recipes for which CSV is not flexible enough
- read in complex parameter assignments or configuration files
- output complex files for documentation

S7-1200 FW 4.5

Configured OUC connections



Connection configuration in HWCN for

- TCP
- UDP
- Iso-on-TCP

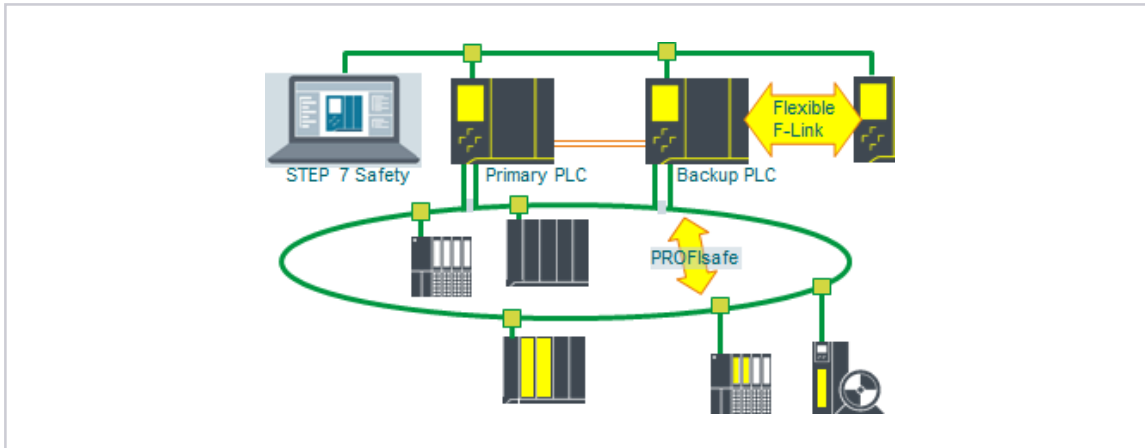
Enables connection to be established in RUN without TCON or T_DISCON

The image features two Siemens SIMATIC S7-1500 industrial controllers in the foreground, with their screens displaying 'RUN-Redundant' status and 'CPU 1517H-3 PN' specifications. In the background, a computer monitor shows a network topology diagram with various nodes and connections. A semi-transparent teal banner is overlaid on the bottom left, containing the main title. The bottom of the image has a white footer with copyright and website information.

S7-1500 H & R FW 2.9 Novedades

S7-1500 H&R FW 2.9

Redundant controller with Safety: CPU 1518HF-4 PN



New PLC: CPU 1518HF-4 PN

- Engineering in STEP 7 Professional (TIA Portal) V17 and STEP 7 Safety
- Safety programming similar to non-redundant fail-safe PLC
- Support of PROFIsafe communication
- Supports flexible F-Link for fail-safe controller/controller communication
- 3rd Ethernet interface (X3) for redundant "north-bound" connection

Benefits

- No additional failsafe PLC required
- High level of availability for applications in combination with Safety

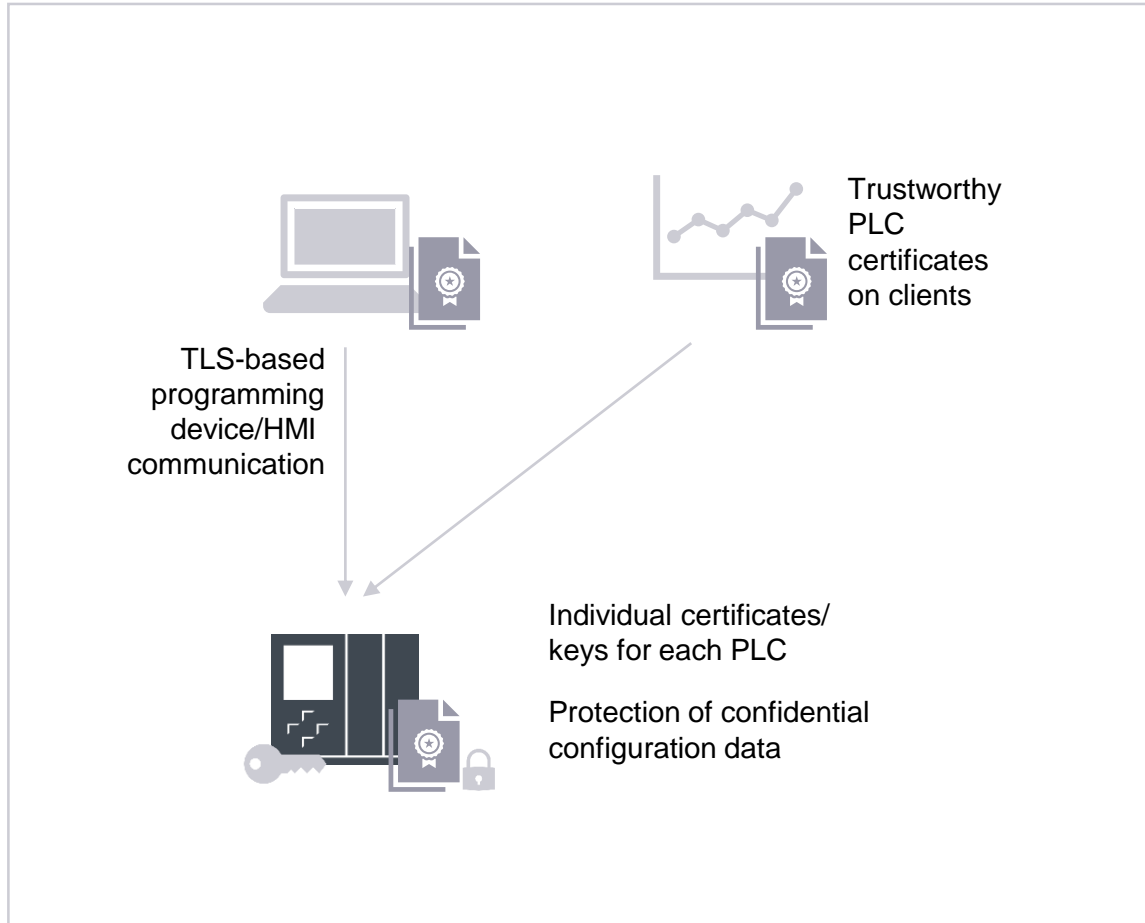
Seguridad en TIA Portal

Restricted © Siemens 2021

[siemens.es/simatic](https://www.siemens.es/simatic)

Security on TIA Portal

Enhanced security for SIMATIC programming device/HMI communication



Security improvements for programming device/HMI communication between TIA Portal / HMIs and S7-1200/1500 CPUs

- Communication security based on Internet-standard TLS¹
- PLCs use certificates to identify or authenticate themselves to engineering or HMI systems
- Certificates are generated automatically via TIA Portal or can be imported from external sources
- A compatibility mode can be activated for the previous and the new TLS-based communication at the same time
- Protection of sensitive configuration data in TIA Portal and the CPU is possible by means of a user-defined password (optional)

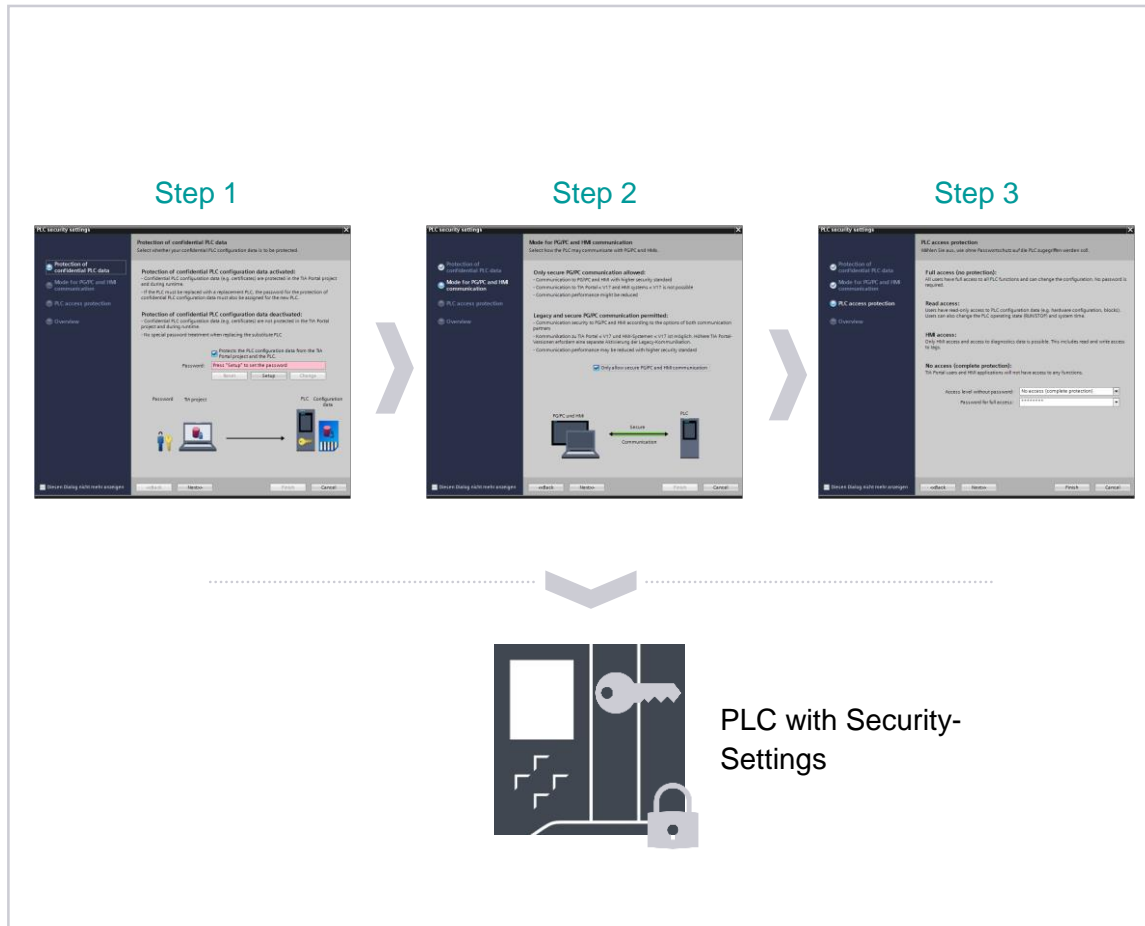
Benefits

- Enables unique identification of every PLC based on individual certificates
- Provides additional confidentiality protection by means of encrypted communication
- Protection of configuration data by means of individual passwords

¹ TLS – Transport Layer Security

Security on TIA Portal

Security Wizard for new PLC Security Mechanisms



Security Wizard

- The new Security Mechanisms are activated by default (Security-by-Default) in new PLC Firmware versions.
- When inserting a new CPU (S7-1500 FW v2.9, S7-1200 FW v4.5) a new Security Wizard appears automatically to configure the security mechanisms.
- Following configuration is done via the Security Wizard:
 - Protection of confidential PLC configuration data
 - Mode for secure PG/PC and HMI Communication
 - PLC Access Protection
- The Security Wizard can also be called again later from the Hardware Configuration.

Benefits

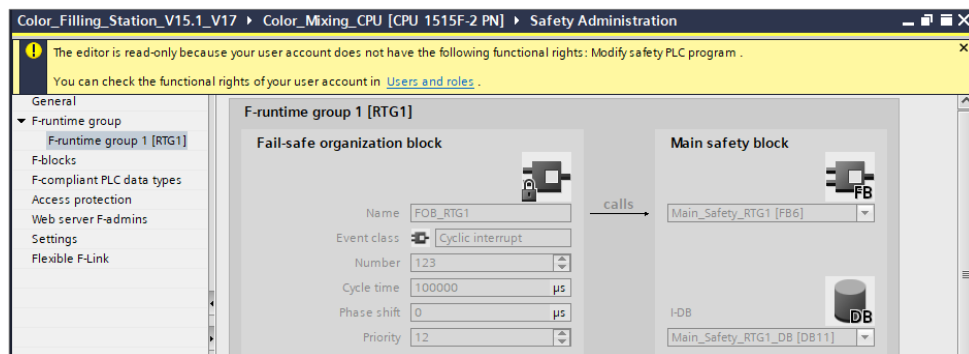
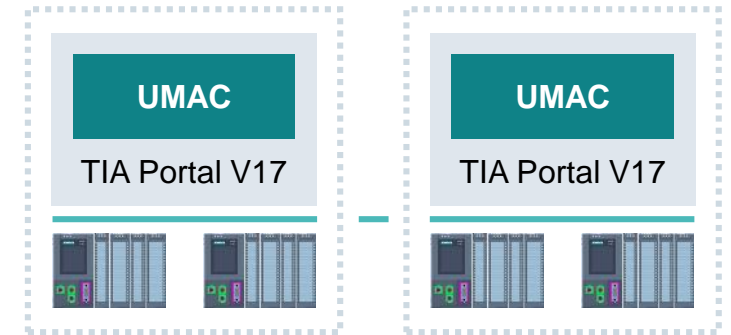
- Quick and easy configuration of the new PLC Security mechanisms in a single process step
- Supporting information to select suitable settings for own use case

Security on TIA Portal

TIA Portal User Management & Access Control (UMAC)

UMAC: User Management and Access Control

- Built-in functionality in TIA Portal
- Allows personalized access to TIA Portal projects
- Define project users, roles and assign them



Engineering rights	
Name	Group
<input checked="" type="checkbox"/> Open the project read-only	General
<input checked="" type="checkbox"/> Open and edit the project	General
<input checked="" type="checkbox"/> Monitor PLC program	PLC
<input checked="" type="checkbox"/> Modify PLC program online	PLC
<input checked="" type="checkbox"/> Download PLC	PLC
<input checked="" type="checkbox"/> Edit PLC program	PLC
<input type="checkbox"/> Modify safety PLC program	PLC
<input type="checkbox"/> Edit security device configuration	Security
<input type="checkbox"/> View security device configuration	Security
<input checked="" type="checkbox"/> Edit hardware configuration	General
<input checked="" type="checkbox"/> Modify	HMI
<input checked="" type="checkbox"/> Maintenance	HMI
<input checked="" type="checkbox"/> Download	HMI
<input type="checkbox"/> Manage users and roles	General
<input type="checkbox"/> Upgrade project	General
<input checked="" type="checkbox"/> Edit project via Openness API	General
<input checked="" type="checkbox"/> Import project texts	General
<input checked="" type="checkbox"/> Download to other devices	General
<input checked="" type="checkbox"/> Change library type versions	General

Árbol del proyecto

Dispositivos Plant objects

- UMAC
 - Agregar dispositivo
 - Dispositivos y redes
 - MqttPlc1200 [CPU 1215C DC/DC...
 - MqttPlc1500 [CPU 1516F-3 PN...
 - MqttPlc1512SP [CPU 1512SP-1 ...
 - Dispositivos no agrupados
 - Configuración de seguridad
 - Funciones para varios dispositivos
 - Datos comunes
 - Configuración del documento
 - Idiomas y recursos
 - Version Control Interface
- Accesos online
- Lector de tarjetas/memoria USB

Vista detallada

Módulo

- | Nombre |
|--------------------------------|
| Configuración de dispositiv... |
| Online y diagnóstico |
| Bloques de programa |
| Objetos tecnológicos |
| Fuentes externas |
| Variables PLC |
| Típos de datos PLC |
| Tablas de observación y for... |
| Backups online |
| Traces |
| Comunicación OPC UA |
| Datos de proxy de dispositi... |
| Información del programa |
| Listas de textos de aviso PLC |
| Módulos locales |
| Periferia descentralizada |

Vista del portal Vista general



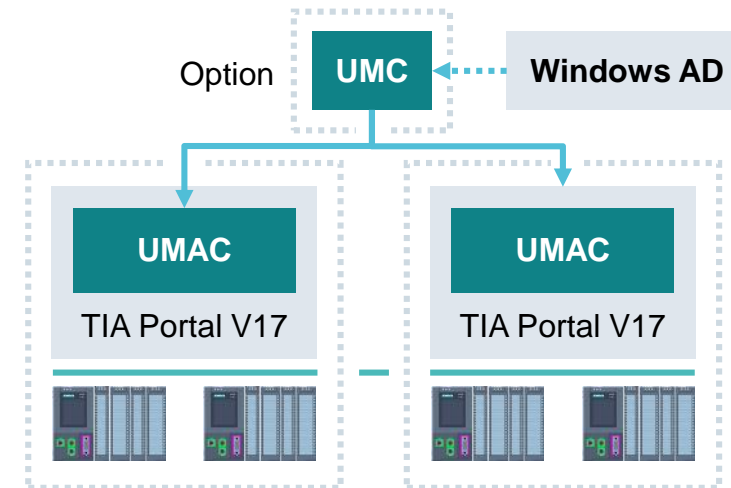
Demo práctica

Security on TIA Portal

TIA Portal User Management & Access Control (UMAC)

UMC: User Management Component

- Extends UMAC by optional use
- Manages users/groups outside TIA Portal projects
- Import of needed UMC users/groups into TIA Portal projects
- Assigning project roles to them
- Authenticates UMC users' logins afterwards





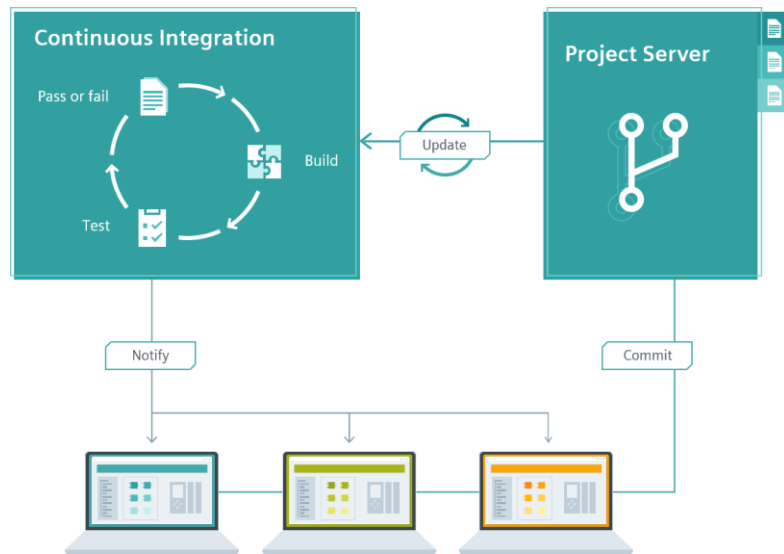
TIA Portal AddOns Novedades

© Siemens 2021

[siemens.es/simatic](https://www.siemens.es/simatic)

News on AddOns

Multiuser



Multiuser

- Local sessions can be saved on network drives and additionally as TIA Portal archive (single project)

TIA Portal project server

- All user IDs are now saved during check-in
- Export and import of projects is possible directly via the Administration Tool

Multiuser Openness

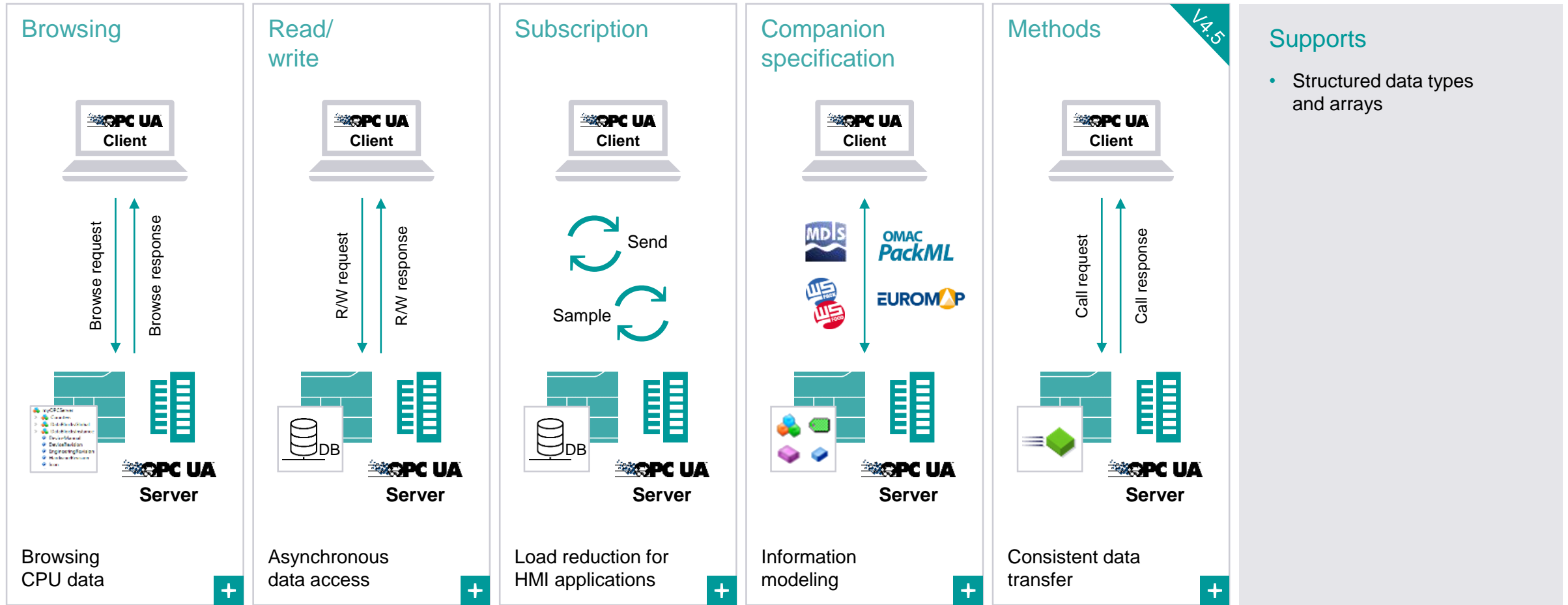
- Openness functions can be used in a Multiuser session. This allows the use of existing Openness applications within Multiuser Engineering
- With TIA Portal V17, new Multiuser Openness APIs are available for integrating multiuser workflows into your own automation processes
- Combining Openness functions and the new Multiuser Openness APIs enables efficient, automated Multiuser operations via own applications or in TIA Portal add-ins. For example this can be used for automated library comparison and update of plant projects

Multiuser commissioning

- With V17, the asynchronous Commissioning mode supports the loading of controllers with activated access protection and of program changes to the F program part in the background and thus reduces the downloading time

News on AddOns

OPC UA – S7-1200 V4.5



Supports

- Structured data types and arrays

News on AddOns

OPC UA – S7-1500 Alarms & Conditions

The top screenshot shows the 'Properties' dialog for 'PLC_4 [CPU 1516-3 PN/DP]' with the 'General' tab selected. Under 'OPC UA', the 'Server' sub-tab is active, showing options to 'Activate OPC UA server' (checked) and 'Enable 'Alarms And Conditions' on the OPC UA server' (checked). A blue arrow points to the 'Enable' checkbox.

The bottom screenshot shows the 'Events' window with the 'Alarms' tab selected. It displays a table of active alarms with columns for Acknowledged (A), Cleared (C), Time, Severity, Server/Object, SourceName, Message, EventType, and Active status.

A	C	Time	Severity	Server/Object	SourceName	Message	EventType	Active
		14:14:55.884	500	Quickstart Alar...	Internal	Events Raised	AuditEventType	
△		14:14:55.884	500	Quickstart Alar...	EastTank	The alarm severity has increased.	NonExclusiveLevelAlarmType	LowActive
△		14:14:55.884	500	Quickstart Alar...	NorthMotor	The alarm severity has increased.	ExclusiveDeviationAlarmType	High
△		14:14:55.884	500	Quickstart Alar...	SouthMotor	The alarm severity has increased.	TripAlarmType	Active
		14:14:56.898	500	Quickstart Alar...	Internal	Raising Events	SystemEventType	
		14:14:56.898	500	Quickstart Alar...	Internal	Events Raised	AuditEventType	
		14:14:57.912	500	Quickstart Alar...	Internal	Raising Events	SystemEventType	
		14:14:57.912	500	Quickstart Alar...	Internal	Events Raised	AuditEventType	
△		14:14:57.912	900	Quickstart Alar...	EastTank	The alarm severity has increased.	ExclusiveDeviationAlarmType	High
△		14:14:57.912	900	Quickstart Alar...	WestTank	The alarm severity has increased.	TripAlarmType	Active
△		14:14:57.912	900	Quickstart Alar...	SouthMotor	The alarm severity has increased.	NonExclusiveLevelAlarmType	LowLowActive

The 'Details' section below the table shows the following values:

Name	Value
Identifier	1:Metals/SouthMotor?Silver
AckedState/Id	False
ActiveState	"en-US", "Active"
ActiveState/EffectiveDisplayName	"en-US", "LowActive"
ActiveState/Id	True
ConditionName	Silver
ConfirmedState/Id	False
EventId	len=16, 0xf43d7759d2d0f4438a08baf449d7583f
EventType	NodeId
Message	"", "The alarm severity has increased."
Retain	True
Severity	500
SourceName	SouthMotor
Time	14:14:41.682

CPU messages can be transferred to OPC UA clients

Supported SIMATIC alarm types

- Programmed alarms/messages
- ProDiag messages
- System events

Per subscriptions Alarms, Conditions & Events can be subscribed by the client.

Program messages incl. associated values are provided by the OPC UA server.

Alarms requiring acknowledgement can be acknowledged from the OPC UA client (can be deactivated).

A "message burst" is displayed as "overload" and messages can be refreshed from the client.

Number of simultaneous messages:

	PLC Type	Small	Middle	Big
System Diagnostics		50	100	200
Program Alarms		100	200	400

Árbol del proyecto

Dispositivos Plant objects

- UMAC
 - Agregar dispositivo
 - Dispositivos y redes
 - MqttPlc1200 [CPU 1215C DC/DC/DC]
 - MqttPlc1500 [CPU 1516F-3 PN/DP]
 - MqttPlc1512SP [CPU 1512SP-1 PN]
 - Configuración de dispositivos
 - Online y diagnóstico
 - Software Units
 - Bloques de programa
 - Objetos tecnológicos
 - Fuentes externas
 - Variables PLC
 - Tipos de datos PLC
 - Tablas de observación y forzado permanente
 - Backups online
 - Traces
 - Comunicación OPC UA
 - Aplicaciones web
 - Datos de proxy de dispositivo
 - Información del programa
 - Supervisiones y avisos del PLC
 - Listas de textos de aviso PLC

Vista detallada

Nombre



Propiedades Información Diagnóstico

General

No hay 'propiedades' disponibles.

Actualmente no es posible visualizar propiedades. Es posible que no se haya seleccionado ningún objeto o que el objeto seleccionado no tenga propiedades visualizables.

Demo práctica

Tareas

Opciones

Buscar/reemplazar

Buscar:

Buscar sólo palabra completa

Mayúsculas/minúsculas

Buscar en estructuras subordinadas

Buscar en textos ocultos

Utilizar comodines

Utilizar expresiones regulares

Abajo

Arriba

Buscar

Reemplazar:

Todo el documento

Desde posición actual

Selección

Reemplazar Reempl. todo

Idiomas y recursos

Idioma de edición:

Idioma de referencia:

News on AddOns

OPC UA – Client compact blocks

Communication		
Name	Description	Version
OPC UA		
OPC UA client		V2.1
Establish session		
OPC-UA_Connect	Create connection	V1.0
OPC-UA_NamespaceGe...	Read namespace indexe	V1.0
OPC-UA_NodeGetHand...	Get handles for read an..	V1.0
OPC-UA_MethodGetHa...	Get handles for metho...	V1.0
OPC-UA_TranslatePathL...	Get actual NodeIds	V1.0
Data Access (DA)		
OPC-UA_ReadList	Read tags	V1.0
OPC-UA_WriteList	Write tags	V1.0
OPC-UA_MethodCall	Call method	V1.0
Clear session		
OPC-UA_NodeReleaseH...	Release handles for rea..	V1.0
OPC-UA_MethodReleas...	Release handles for me..	V1.0
OPC-UA_Disconnect	Close connection	V1.0
Diagnostics		
OPC-UA_ConnectionGe...	Read connection status	V1.0

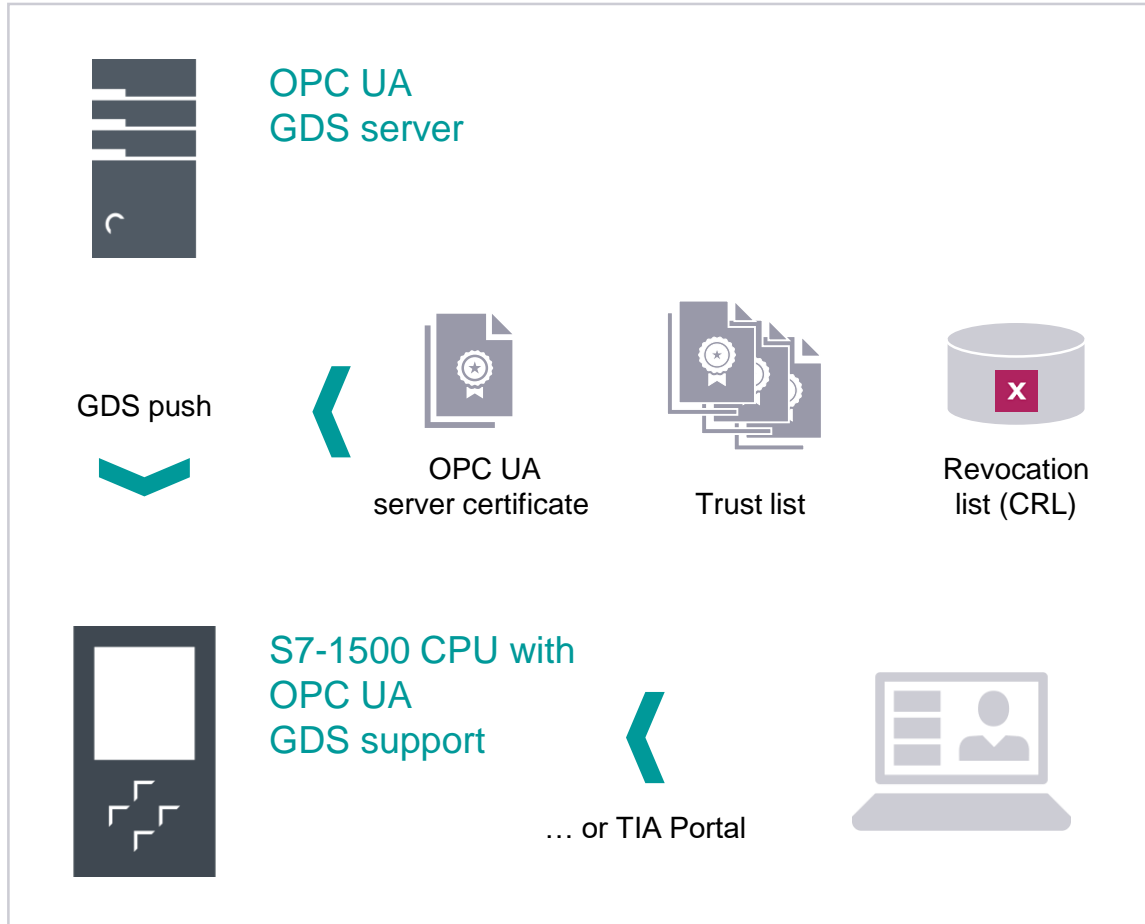
New, simplified blocks for handling

- Read
- Write
- Methods

Communication		
Name	Description	Version
S7 communication		V1.3
Open user communication		V7.0
OPC UA		
OPC UA client		V3.0
Compact blocks		
OPC-UA_ReadList_C	Create Connection and read Tags	V1.0
OPC-UA_WriteList_C	Create Connection and write tags	V1.0
OPC-UA_MethodCall_C	Create Connection and call method	V1.0

News on AddOns

OPC UA – Certificate management via OPC UA



- ✓ Certificate update during running
- ✓ Supports CRLs
- ✓ Access protection for certificate management
- ✓ Commissioning mode
 - Currently only for OPC UA and internal CPU interfaces, later also for other services and CP/CMs

News on AddOns

PLCSIM Advanced – Improvements in the new version



Compatibility maintained

- Compatible with TIA Portal V17 and projects from versions V14 to V17
- Support of user-defined protection of configuration data from TIA Portal
- Supports S7-1500 CPU firmware versions V1.8 – V2.9

Functionality extended

PLCSIM now supports the TIA Portal multilingual concept thanks to the subsequent loading of additional languages

CPU support extended

The control code for the following SIMATIC PLCs can now be loaded directly and simulated with PLCSIM

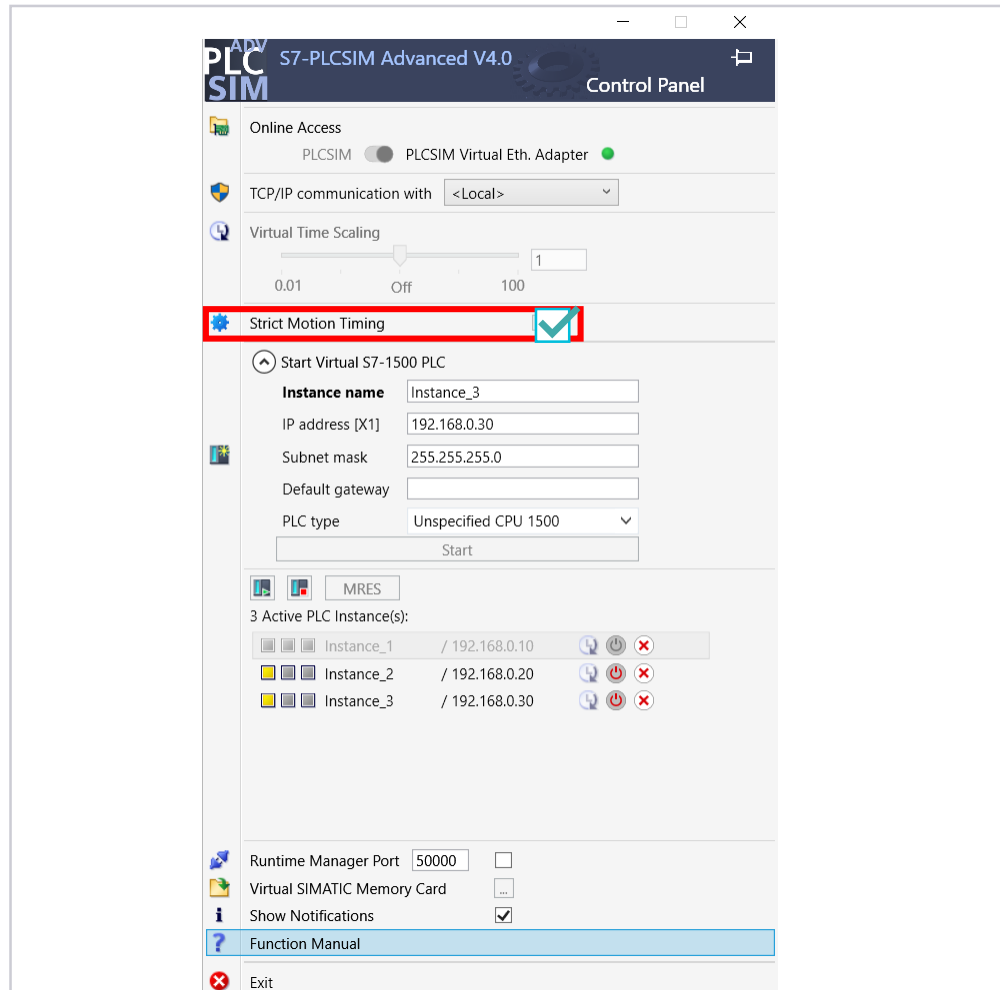
- SIMATIC Drive Controller S7-1504 D TF and S7-1507 D TF
- SIMATIC ET 200pro CPUs
- SIMATIC S7-1500 H(F)/R CPUs
- SIMATIC S7-1518 T/TF
- SIMATIC S7-SIPLUS CPUs
 - Equivalents of the supported standard CPU types

Performance improved

Improvements in user performance and memory usage thanks to removal of the redundant device view in PLCSIM. Customers use the device view in TIA Portal.

News on AddOns

PLCSIM Advanced – New operating mode “Strict Motion Timing”



New Function

To simulate the [Motion Control Functions for S7-1500 / S7-1500T CPUs](#) precise and identical to the real hardware a new operating mode have been implemented.

„Strict Motion Timing“

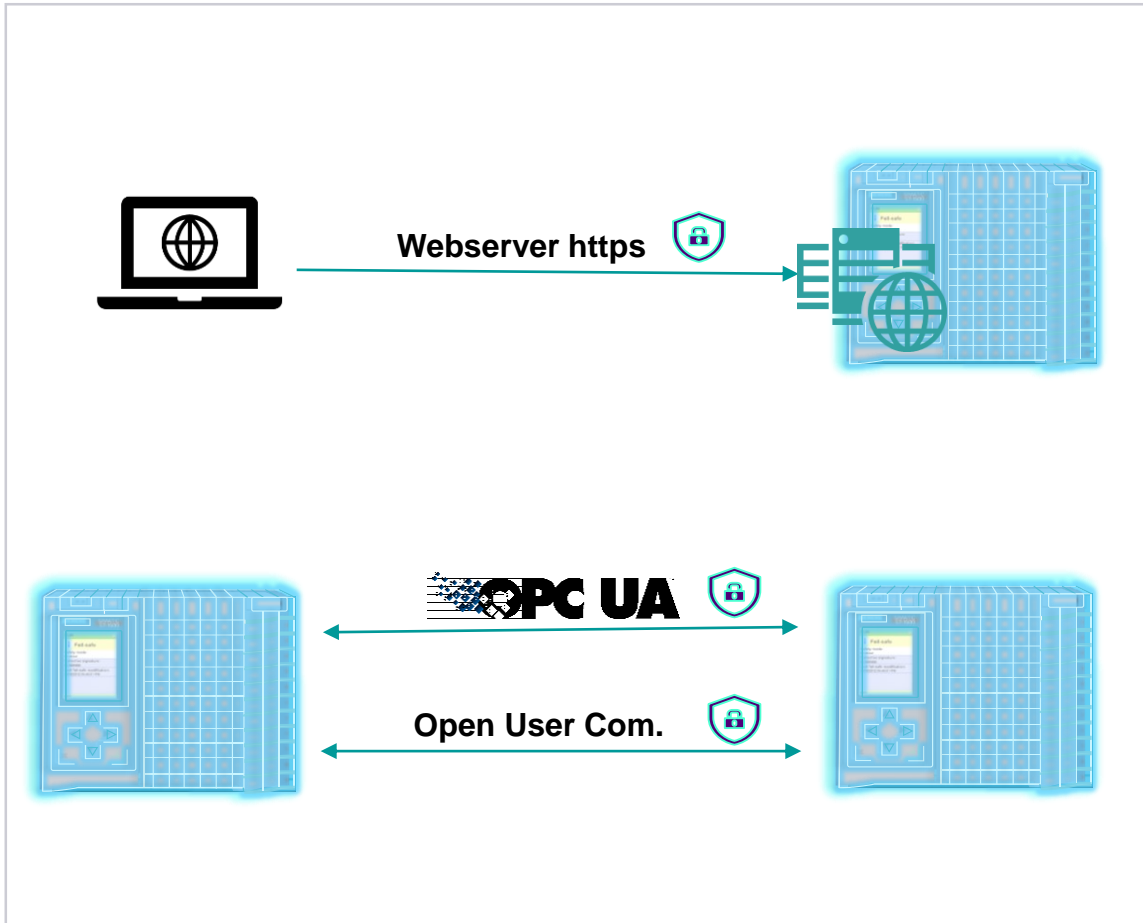
Strict Motion Timing “True” switches the buffer overflow detection "ON" (V3 behavior). The motion OBs are processed in each interval they called (e.g. 4 ms in cyclic mode). If the "Strict Motion Timing" mode is selected, the MC servo clock is synchronized with the PLC cycle in order to ensure the correct calculation analogous to the HW PLC including the original message behavior in the diagnostic buffer. The function can be specified globally via the GUI or via the configuration file and globally via the API and per running instance. With the virtual time, the running speed can be adapted to the PC performance in order to avoid a STOP of the virtual PLC.

Default Mode:

Strict Motion Timing "False" switches the buffer overflow detection "OFF" (V2 behavior). The Motion OBs are called in every interval (e.g. 4 ms), but may not be processed because they were overtaken by the PLC cycle. The simulation is high-performance, which is helpful for co-simulations, but can be imprecise in detail because movements may still be calculated after they have already been stopped. The virtual time scale can be used to accelerate or decrease, and the PLC instance does not switch to STOP due to buffer overflows.

News on AddOns

PLCSIM Advanced – Simulation of secured communication connections



Function

Expansion of the communication options to include secure connections analogous to the hardware CPU with firmware version V2.9 and STEP 7 V17

OPC UA

- Secured OPC UA connections

Webserver

- https – now also simulation of projected https connections
- Webserver User Management is supported

„open user communication“ (secured TCP communication)

- New instructions TSEND_C / TRCV_C and secured TCON

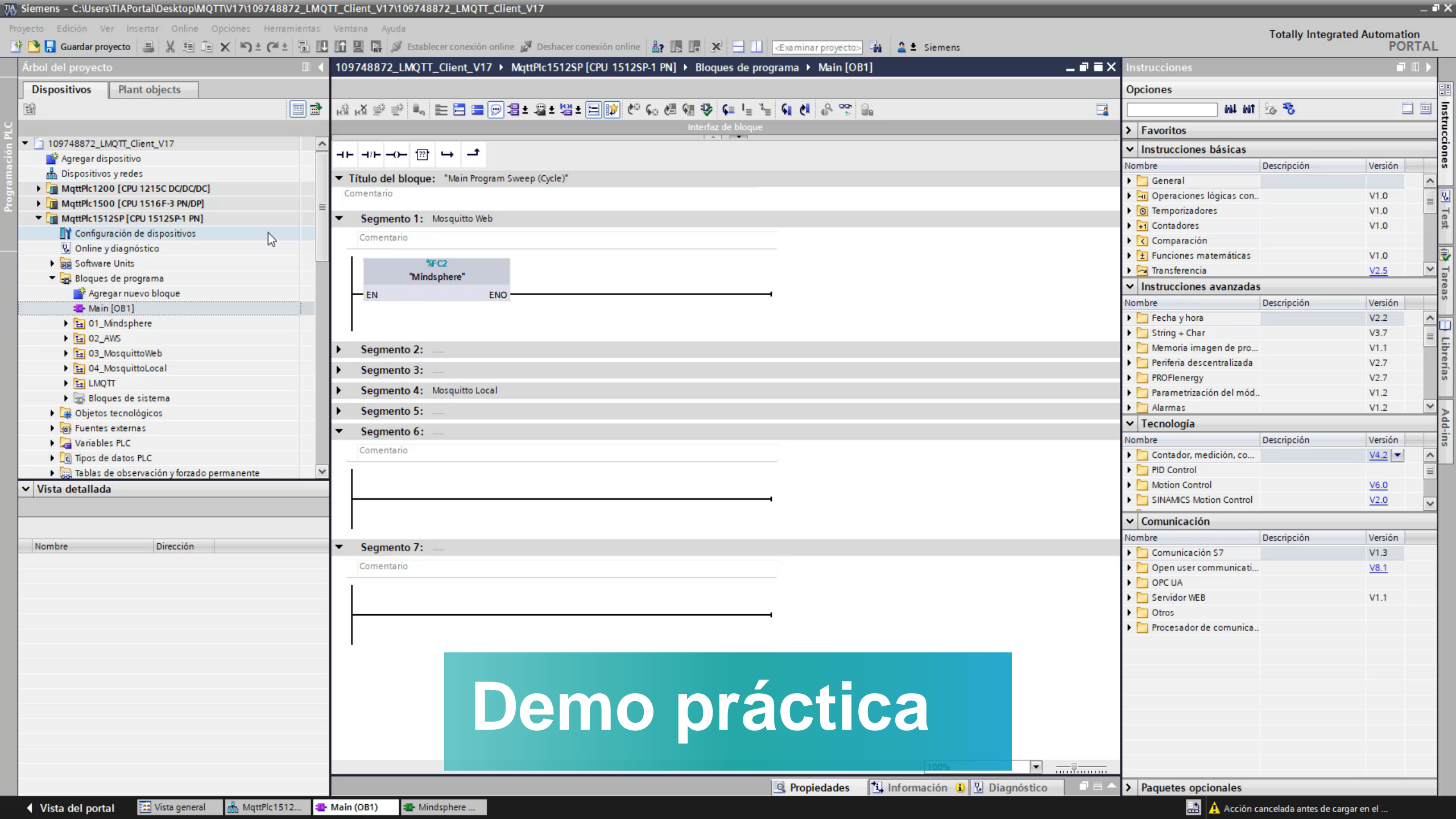
Details

Secure communication

TIA Portal V17 projects with V17 CPU firmware version V2.9 can also be loaded and executed on the S7-PLCSIM Advanced in secure, encrypted mode. This means that safe communication can be tested in the virtual controller without making changes to the automation project.

Compatibility mode

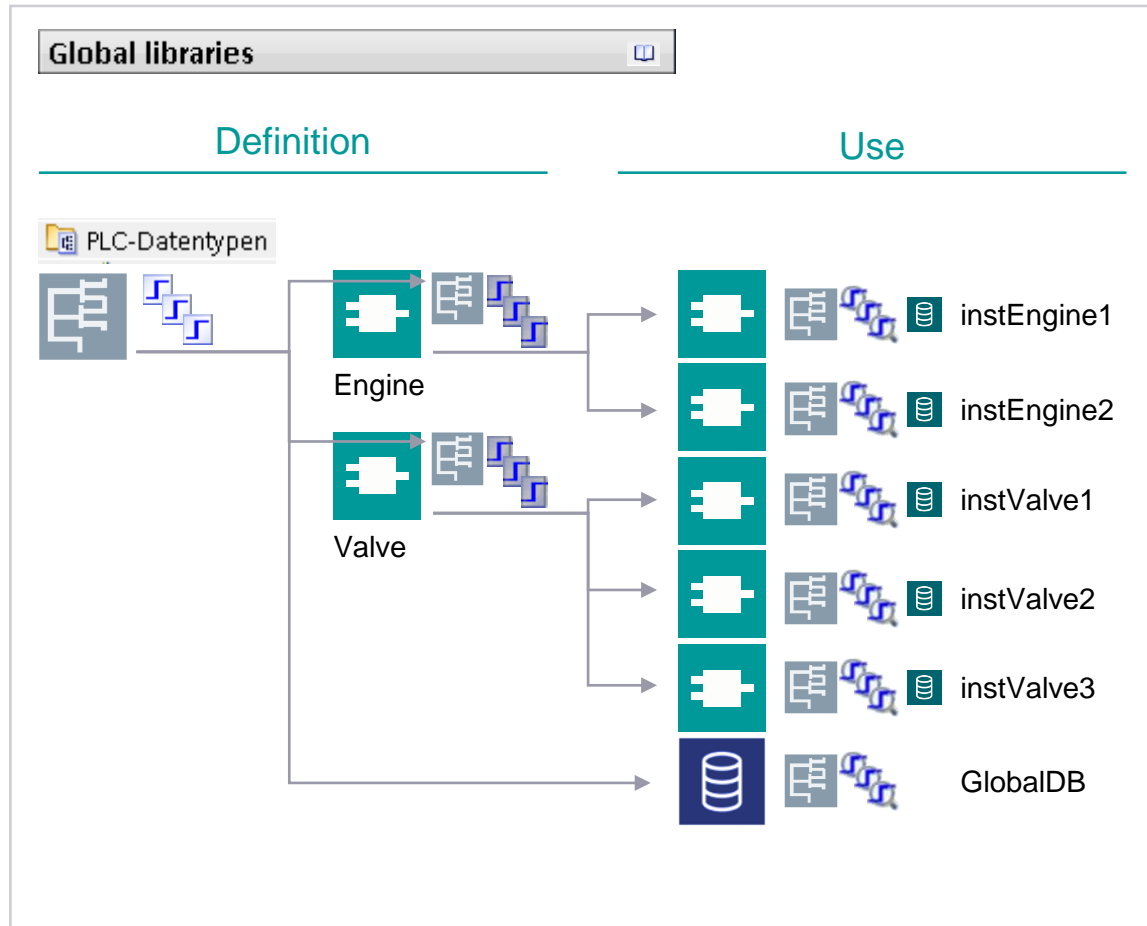
TIA Portal V17 projects with firmware versions V1.8-V2.8x can still be simulated in the previous mode.




Demo práctica


News on AddOns

ProDiag– Supervisions in PLC data types



 = editable supervision function at the type

 = supervision function is in a subordinate object

 = actual supervision instance (with supervision code)

Function

- Supervisions within the PLC data types now enable a comprehensive type instance concept for process diagnostics
- Changes now only necessary in one place!
- A ProDiag supervision block need not necessarily be assigned to instances of PLC data types (then no diagnostic function available)
- Additional supervisions are possible at the point of use for the PLC data type so that further diagnostics are available for instance-specific needs.

Customer benefits

- Time-saving possible thanks to central management of supervisions, e.g. in the library
- Fewer sources of error as there is no manual definition of supervisions at the places where data types are used.

TIA Portal – Catálogo de ofertas

SIEMENS

Contacto Spain

Productos y Servicios Soluciones para diferentes sectores Empresa

Search for ...

Productos y Servicios > Automatización Industrial > Sistemas de Automatización > Controladores SIMATIC > PLCs > Ofertas de Automatización

Ofertas de Automatización SIMATIC

Lo mejor de la automatización industrial al mejor precio.

Ponemos a tu disposición nuestras ofertas de automatización basadas en nuestros Controladores SIMATIC S7-1200 y S7-1500, la herramienta de ingeniería TIA Portal, así como las últimas programadoras FIELD PG M6 y Mini PLCs LOGO! 8. Nuestro objetivo es aportarte las herramientas que te permitan adentrarte en el mundo de la automatización industrial.



Mini PLC



Controladores Básicos



Controladores Avanzados



Field PGs



TIA Portal



Entrenadores



<http://siemens.es/starterkits>

SIEMENS

TIA Portal

Highlights of TIA Portal V17

Joaquín Sanz Ferrándiz

TIA Portal Product Manager -Controllers

RC-ES DI FA S7-PROD

Spain

E-mail joaquin.sanz@siemens.com

LinkedIn: www.linkedin.com/in/joaquinsanzferrandiz



Muchas gracias