

We take our responsibility towards the community very seriously and look for a variety of ways to measure the role we play and the lasting benefit we create.

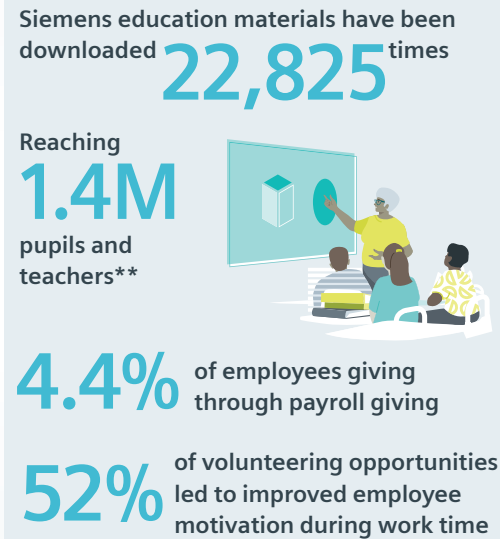
As a responsible business we allow our employees 2 paid volunteering days to participate in our community initiatives. It is our belief that by involving them directly with their communities on topics where our business can also leverage our expertise, we can together create lasting value for those communities.

The impact of these activities is measured and understood using our Business to Society methodology.

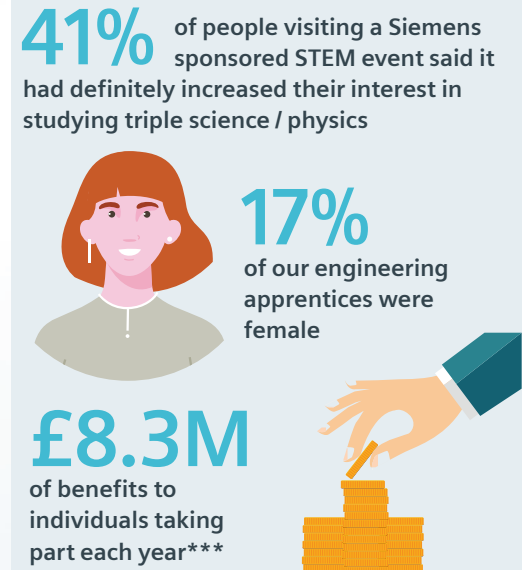
**Input**



**Outcome**



**Impact**



\*excluding Siemens Healthineers and Siemens Gamesa Renewables.

\*\*calculated using Engineering UK's methodology of download reach, where each download reaches 2 teachers and 58 pupils.

\*\*\*calculated using our new Experimental Cost Benefit Analysis Model.

**Corporate Citizenship UK 2018**