

# Terminal Blocks

## 8WA1 Terminals with Screw Connection

### Diode terminals and isolating terminals

#### Selection and ordering data

With insulating body of molded thermoplastic

Terminal size 2.5 · Assembly width 6 mm

Diode terminals · With screw connections on both sides with test facility for test plugs of 2.3 mm dia.

| Dimensions <sup>7)</sup> | Rated insulation voltage | Rated uninterrupted current | Description                 | Order No.             | Price |
|--------------------------|--------------------------|-----------------------------|-----------------------------|-----------------------|-------|
|                          | 250 V<br>$U_{RRM}^{1)}$  | 1 A                         | <b>Diode terminal</b>       | <b>8WA1 011-1EF20</b> |       |
|                          | 250 V<br>$U_{RRM}^{2)}$  | 0.25 A                      | <b>Diode terminal</b>       | <b>8WA1 011-1EF28</b> |       |
|                          | $U_Z = 2.4 V^{3)}$       | 0.25 <sup>4)</sup> A        | <b>Zener diode terminal</b> | <b>8WA1 011-1EF24</b> |       |

Through-type terminals with sectionalizing feature · With 2 holes for test plugs of 2.3 mm dia.

| Dimensions <sup>7)</sup> | Rated uninterrupted current               | Rated insulation voltage   | Description   | Order No.                          | Price |
|--------------------------|---|--|---|------------------------------------|-------|
|                          | 10 A                                      | AC 380 V, DC 450 V<br>(solder tags bent alternately up and down) | <b>Isolating terminal</b><br>with screw connection on both sides<br>with 1 screw and 1 solder connection  | <b>8WA1 501</b><br><b>8WA1 511</b> |       |
|                          | open insulating gap<br>AC 380 V, DC 450 V |  | Through-type terminals with sectionalizing feature are used for convenient current path isolation without disconnecting the conductors. At the sockets of the terminal screws, for example, it is possible to measure the loop impedance or to connect an ammeter into the circuit. The terminals can be connected in parallel by means of connecting combs. This means that the connectable conductor size is reduced by one step. |                                    |       |

#### Accessories

|  | Rated uninterrupted current | Description                              | Fig. No. | Order No.       | Price   |          |
|--|-----------------------------|--|----------|-----------------|---|----------|
|  | 10 A                        | <b>Barrier</b> width 1 mm                | ①        | <b>8WA1 820</b> |   |          |
|  |                             | <b>Jumper plug</b>                       | ③        | <b>8WA1 873</b> |   |          |
|  | 10 A                        | <b>Connection comb<sup>5)</sup></b>      | 2-pole   | ②               | <b>8WA1 822-7VF12</b><br><b>8WA1 822-7VF13</b><br><b>8WA1 822-7VF14</b> |          |
|  |                             | 3-pole                                   |          |                 |   |          |
|  |                             | 4-pole                                   |          |                 |   |          |
|  | 10 A                        | <b>Test plugs</b><br>(1 pack = 10 units) | white    | ④               | <b>8WA1 867</b>   | 1 packg. |
|  |                             | red                                      |          | <b>8WA1 868</b> | 1 packg.  |          |
|  |                             | blue                                     |          | <b>8WA1 870</b> | 1 packg.  |          |
|  | 10 A                        | <b>Reduction plug</b>                    | ⑤        | <b>8WA1 871</b> |   |          |

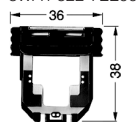
#### Terminal for components

Terminal size 1.5 · Assembly width 10 mm

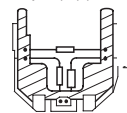
Terminal for components · With screw connections on both sides, for 2 conductors each · Plug with PCB for components

| Dimensions <sup>7)</sup> | Design               | Limit values<br>Current / Power loss | Description  | Order No.             | Price |
|--------------------------|----------------------|--------------------------------------|--|-----------------------|-------|
|                          | Space for components | 6.3 A<br>500 V <sup>6)</sup>         | <b>Terminal for components</b><br>(enclosure only)<br>For user to fit own components | <b>8WA1 011-1EE00</b> |       |
|                          |                      | 6.3 A/0.65 W                         | <b>Plug with PCB</b><br>for components and labelling plate<br>(20 mm × 9 mm)         | <b>8WA1 822-7EE00</b> |       |

8WA1 822-7EE00



8WA1 822-7EE00 fully equipped, example



Labelling accessories see page 15/40 - 43

- 1) Peak reverse voltage 1000 V.
- 2) Peak reverse voltage 4000 V.
- 3) Break-through voltage  $\pm 5\%$ .
- 4) Let-through current.
- 5) When used the conductor cross-section will be reduced by one terminal size.
- 6) To next terminal; internally determined by customer's components.
- 7) 25.4 mm = 1.00 inch.