

## Contents

---

### **Dry Type Transformers**

Amperage Rating Reference Tables	7-2
Catalogue coding system	7-3
<b>NRCAN Rated General Purpose Transformers</b>	
Commercial Dry Type Transformers	
Aluminium Winding	7-4
Copper Winding	7-5
Industrial Dry Type Transformers	
Aluminium Winding	7-6 – 7-7
Copper Winding	7-8 – 7-9
K Rated Industrial Dry Type Transformers	
Aluminium Winding	7-10
Copper Winding	7-11
Wiring Diagrams	7-12 – 7-13
Enclosure Figures	7-14 – 7-16

# Dry Type Transformers

## Amperage Rating Reference Tables

General

### Single Phase Transformer Amperage Ratings

Line Voltage (Volts)						
kVA	120	240	480	600	2400	4160
3	25.0	12.5	6.25	5.00	1.25	0.72
5	41.7	20.8	10.4	8.33	2.08	1.20
7.5	62.5	31.3	15.6	12.5	31.3	1.80
10	83.3	41.7	20.8	16.7	4.17	2.40
15	125	62.5	31.3	25.0	6.25	3.61
25	208	104	52.1	41.7	10.4	6.01
37.5	313	156	78.1	62.5	15.6	9.01
50	417	208	104	83.3	20.8	12.0
75	625	313	156	125	31.3	18.0
100	833	417	208	167	41.7	24.0
150	1250	625	313	250	62.5	36.1
200	1667	833	417	333	83.3	48.1
250	2083	1042	521	417	104	60.1
333	2775	1388	694	555	139	80.0

### Three Phase Transformer Amperage Ratings

Line Voltage (Volts)						
kVA	208	240	480	600	2400	4160
6	16.7	14.4	7.22	5.77	1.44	0.83
10	27.8	24.1	12.0	9.62	2.41	1.39
15	41.6	36.1	18.0	14.4	3.61	2.08
30	83.3	72.2	36.1	28.9	7.22	4.16
45	125	108	54.1	43.3	10.8	6.25
50	139	120	60.1	48.1	12.0	6.94
75	208	180	90.2	72.2	18.0	10.4
112.5	312	271	135	108	27.1	15.6
150	416	361	180	144	36.1	20.8
225	625	541	271	217	54.1	31.2
300	833	722	361	289	72.2	41.6
450	1249	1083	541	433	108	62.5
500	1388	1203	601	481	120	69.4
600	1665	1443	722	577	144	83.3
750	2082	1804	902	722	180	104
1000	2776	2406	1203	962	241	139
1500	4164	3608	1804	1443	361	208
2000	5551	4811	2406	1925	481	278

$$\text{kVA (1 phase)} = \frac{\text{volts} \times \text{amps}}{1000}$$

$$\text{kVA (3 phases)} = \frac{1,732 \times \text{volts} \times \text{amps}}{1000}$$

$$\text{Amps} = \frac{\text{kVA (1 phase)} \times 1000}{\text{volts}}$$

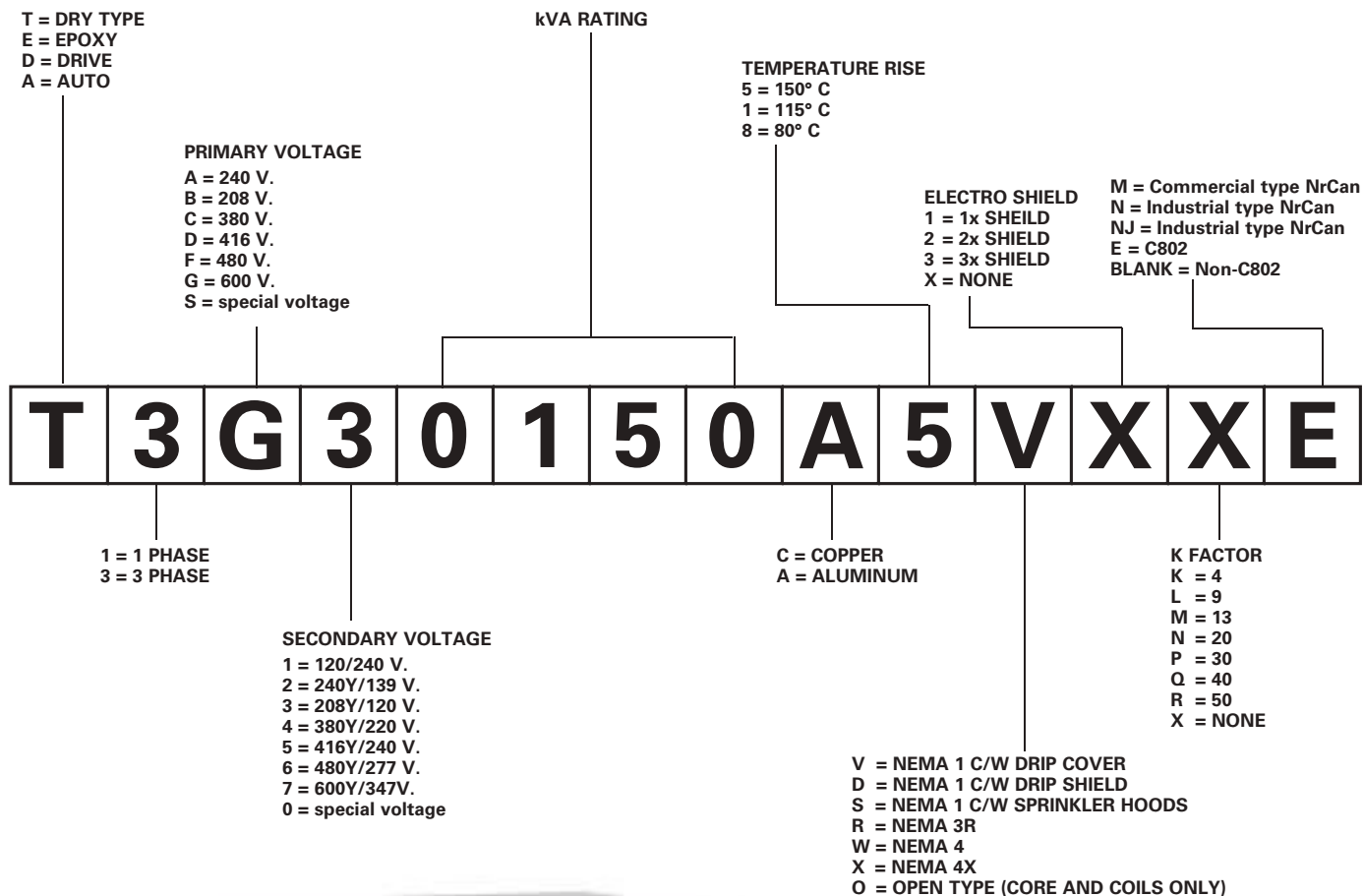
$$\text{Amps} = \frac{\text{kVA (3 phase)} \times 1000}{1,732 \times \text{volts}}$$

# Dry Type Transformers

## Catalogue Coding System

Selection

### CATALOGUE CODE



7  
**DRY TYPE TRANSFORMERS**

# NRCAN Rated General Purpose Transformers

## Commercial Type Aluminum Winding

*Selection*

### Features:

- Available transformer sizes are:
  - Single phase: 15 - 250 kVA
  - Three phase: 15 - 450 kVA
- All winding conductors are in aluminum
- Standard impedance at 60 Hz
- Insulation class 220
- Lugs up to 225 kVA
- Wall mounting brackets up to 75 kVA for three phase
- Standard audible sound level (Meets NEMA ST-20 standards)
- CSA certified (LR3902) and UL listed (E112313)
- 150°C temperature rise
- Enclosure Type: Heavy duty ventilated Type 3R standard
- Enclosure Finish: ANSI 61 Grey, UL50
- Impedance: Typically 3% to 6.5%

### 150°C Rise - Primary 600 V or 480 V

Catalogue Number	kVA	Mounting <sup>①</sup>	Taps <sup>②</sup>	Figure <sup>③</sup>	Dimensions						Weight		Wiring Diagram
					Height		Width		Depth		lbs	kg	
					in.	mm	in.	mm	in.	mm			

### Single Phase, Secondary 120 / 240 V

T1*10015A5RXXM	15	W/F	4 X 2.5	2	24	600	22	561	18	457	160	73	WD1
T1*10025A5RXXM	25	W/F	4 X 2.5	3	26	650	25	632	19	483	225	102	WD1
T1*10037A5RXXM	37.5	F	4 X 2.5	4	31	790	26	668	23	584	310	141	WD1
T1*10050A5RXXM	50	F	4 X 2.5	4	31	790	26	668	23	584	370	168	WD1
T1*10075A5RXXM	75	F	4 X 2.5	5	39	993	29	737	27	686	450	205	WD1
T1*10100A5RXXM	100	F	4 X 2.5	5	39	993	29	737	27	686	560	255	WD1
T1*10150A5RXXM	150	F	4 X 2.5	6	48	1219	38	960	30	762	820	373	WD2
T1*10200A5RXXM	200	F	4 X 2.5	6	48	1219	38	960	30	762	1000	455	WD2
T1*10250A5RXXM	250	F	4 X 2.5	7	56	1425	42	1062	36	914	1300	591	WD2

### Three Phase, Secondary 208 Y / 120 V

T3*30015A5RXXM	15	W/F	4 X 2.5	1	18	447	20	511	18	457	165	75	WD3
T3*30030A5RXXM	30	W/F	4 X 2.5	2	24	600	22	561	18	457	285	130	WD3
T3*30045A5RXXM	45	W/F	4 X 2.5	3	26	650	25	635	19	483	345	157	WD3
T3*30075A5RXXM	75	F	4 X 2.5	4	31	993	26	668	23	584	540	245	WD3
T3*30112A5RXXM	112.5	F	4 X 2.5	5	39	993	29	737	27	686	750	341	WD3
T3*30150A5RXXM	150	F	4 X 2.5	5	39	993	29	737	27	686	885	403	WD3
T3*30225A5RXXM	225	F	4 X 2.5	6	49	1229	38	960	30	762	1500	682	WD3
T3*30300A5RXXM	300	F	4 X 2.5	6	49	1229	38	960	30	762	1750	795	WD3
T3G30450A5RXXM	450	F	4 X 2.5	7	56	1422	42	1067	36	914	2400	1091	WD4



\* Primary Voltage – F = 480V, G = 600V. See page 7-3 for Catalogue Code Detail.

① W = Wall mount F = Floor mount

② Taps: Single phase: 15-250 kVA - 2 x FCAN, 2 x FCBN  
Three phase: 15-450 kVA - 2 x FCAN, 2 x FCBN

③ Please refer to enclosure figures on page 7-23

All weights and dimensions are approximate and subject to change without notice.

# NRCAN Rated General Purpose Transformers

## Commercial Type Copper Winding

*Selection*

### Features:

- Available transformer sizes are:
  - Single phase: 15 - 250 kVA
  - Three phase: 15 - 450 kVA
- All winding conductors are aluminum
- Standard impedance at 60 Hz
- Insulation class 220
- Lugs up to 225 kVA
- Wall mounting brackets up to 75 kVA for three phase
- Standard audible sound level (Meets NEMA ST-20 standards)
- CSA certified (LR3902) and UL listed (E112313)
- 150°C temperature rise
- Enclosure Type: Heavy duty ventilated Type 3R standard
- Enclosure Finish: ANSI 61 Grey, UL50
- Impedance: Typically 3% to 6.5%

### 150°C Rise - Primary 600 V or 480 V

Catalogue Number	kVA	Mounting <sup>①</sup>	Taps <sup>②</sup>	Figure <sup>③</sup>	Dimensions						Weight		Wiring Diagram
					Height		Width		Depth		lbs	kg	
					in.	mm	in.	mm	in.	mm			

#### Single Phase, Secondary 120 / 240 V

T1*10015C5RXXM	15	W/F	4 X 2.5	2	24	600	22	561	18	457	165	75	WD1
T1*10025C5RXXM	25	W/F	4 X 2.5	3	26	650	25	632	19	483	240	109	WD1
T1*10037C5RXXM	37.5	W/F	4 X 2.5	4	31	790	26	668	23	584	340	155	WD1
T1*10050C5RXXM	50	F	4 X 2.5	4	31	790	26	668	23	584	390	177	WD1
T1*10075C5RXXM	75	F	4 X 2.5	5	39	993	29	737	27	686	540	245	WD1
T1*10100C5RXXM	100	F	4 X 2.5	5	39	993	29	737	27	686	650	295	WD1
T1*10150C5RXXM	150	F	4 X 2.5	6	48	1219	38	960	30	762	960	436	WD2
T1*10200C5RXXM	200	F	4 X 2.5	6	48	1219	38	960	30	762	1080	491	WD2
T1*10250C5RXXM	250	F	4 X 2.5	7	56	1425	42	1062	36	914	1440	655	WD2

#### Three Phase, Secondary 208 Y / 120 V

T3*30015C5RXXM	15	W/F	4 X 4.5	1	18	447	20	511	18	457	185	84	WD3
T3*30030C5RXXM	30	W/F	4 X 2.5	2	24	600	22	561	18	457	300	136	WD3
T3*30045C5RXXM	45	W/F	4 X 2.5	3	26	650	25	635	19	483	390	177	WD3
T3*30075C5RXXM	75	W/F	4 X 2.5	4	31	993	26	668	23	584	635	289	WD3
T3*30112C5RXXM	112.5	F	4 X 2.5	5	39	993	29	737	27	686	815	370	WD3
T3*30150C5RXXM	150	F	4 X 2.5	5	39	993	29	737	27	686	980	445	WD3
T3*30225C5RXXM	225	F	4 X 2.5	6	48	1229	38	960	30	762	1600	727	WD3
T3*30300C5RXXM	300	F	4 X 2.5	6	48	1229	38	960	30	762	1850	841	WD3
T3*30450C5RXXM	450	F	4 X 2.5	7	56	1422	42	1067	36	914	3000	1364	WD4



7  
DRY TYPE  
TRANSFORMERS

\* Primary Voltage – F = 480V, G = 600V. See page 7-3 for Catalogue Code Detail.

① W = Wall mount      F = Floor mount

② Taps: Single phase: 15-250 kVA - 2 x FCAN, 2 x FCBN  
Three phase: 15-450 kVA - 2 x FCAN, 2 x FCBN

③ Please refer to enclosure figures on page 7-21 and 7-22

All weights and dimensions are approximate and subject to change without notice.

# NRCAN Rated General Purpose Transformers

## Industrial Type Aluminum Winding

Selection

### Features:

- 15 - 250 kVA single phase  
15 - 450 kVA three phase
- Aluminum winding -  
(standard 3 coil delta-wye  
three phase)
- High quality grain-oriented steel laminations
- Insulation class 220
- Compact and easy-to-install  
enclosure
- Quiet operation and adequate  
ventilation
- Epoxy Vacuum Impregnated (EVI)
- Manufactured to ISO standards upon request

### Options and Accessories:

- Electrostatic shield
- Special paint (other than ASA 61 grey)
- 115°C and 80°C temperature rise
- Operating frequencies other than 60 Hertz
- Special voltage (for domestic or  
export applications)
- Low loss and low noise special designs
- Anti-vibration pads
- Temperature probes
- Busbar to your specifications



### 150°C Rise - Primary 600 V or 480 V

Catalogue Number	kVA	Mounting <sup>①</sup>	Taps <sup>②</sup>	Dimensions						Weight		Noise level (dB)
				Height		Width		Depth		lbs	kg	
				in.	mm	in.	mm	in.	mm			

#### Single Phase, Secondary 120 / 240 V

T1*10015A5RXXN	15	W/F	4 X 2.5	30	762	18	457	14	349	169	77	50
T1*10025A5RXXN	25	W/F	4 X 2.5	33	838	21	533	16	400	227	103	50
T1*10037A5RXXN	37.5	W/F	4 X 2.5	33	838	21	533	16	400	277	126	50
T1*10050A5RXXN	50	W/F	4 X 2.5	33	838	21	533	16	400	350	159	50
T1*10075A5RXXN	75	F	4 X 2.5	47	1194	24	616	23	583	486	221	55
T1*10100A5RXXN	100	F	4 X 2.5	47	1194	24	616	23	583	572	260	55
T1*10150A5RXXN	150	F	4 X 2.5	51	1295	28	718	27	685	814	370	60
T1*10200A5RXXN	200	F	4 X 2.5	58	1473	32	820	30	761	1109	504	65
T1*10250A5RXXN	250	F	4 X 2.5	58	1473	32	820	30	761	1265	575	65

#### Three Phase, Secondary 208 Y / 120 V

T3*30015A5RXXN	15	W/F	4 X 2.5	26	660	18	464	15	375	207	94	45
T3*30030A5RXXN	30	W/F	4 X 2.5	31	775	23	578	18	451	335	152	45
T3*30045A5RXXN	45	W/F	4 X 2.5	31	775	23	578	18	451	381	173	45
T3*30075A5RXXN	75	F	4 X 2.5	31	775	23	578	18	451	396	180	50
T3*30112A5RXXN	112.5	F	4 X 2.5	37	940	28	705	22	552	596	270	50
T3*30150A5RXXN	150	F	4 X 2.5	37	940	28	705	22	552	734	333	50
T3*30225A5RXXN	225	F	4 X 2.5	46	1168	31	787	24	616	1092	495	55
T3*30300A5RXXN	300	F	4 X 2.5	53	1346	37	927	29	724	1635	742	55
T3*30450A5RXXN	450	F	4 X 2.5	53	1346	37	927	29	724	2176	987	55
T3*30500A5RXXN	500	CONSULT CUSTOMER SERVICE										
T3*30600A5RXXN	600											
T3*30750A5RXXN	750											
T3*31000A5RXXN	1000											

\* Primary Voltage - F = 480V, G = 600V. See page 7-3 for Catalogue Code Detail.

① W = Wall mount F = Floor mount

② Taps: Single phase: 15-250 kVA - 2 x FCAN, 2 x FCBN  
Three phase: 15-1000 kVA - 2 x FCAN, 2 x FCBN

All weights and dimensions are approximate and subject to change without notice.

# NRCAN Rated General Purpose Transformers

## Industrial Type Aluminium Winding

Selection

### Features:

- Large connection compartment for ease of wiring and installation
- Many sizes in stock and available for immediate shipment
- Quiet operation for installation flexibility
- Seismic certification for all units
- Space-saving design for easy handling and installation
- Termination lugs provided with transformer through 75 kVA
- Wall brackets available for units up to 75kVA
- Vibration isolation pads provide quiet operation
- Staggered front loop taps for easy connection
- CSA certified (163067) and UL listed (E78376)



### 150°C Rise - Primary 600V or 480V<sup>①</sup>

Catalogue Number	kVA	Mounting	Enclosure Figure <sup>④</sup>	Dimensions <sup>②</sup>										Weight lbs.
				A		B		C		D		E		
				inch	mm	inch	mm	inch	mm	inch	mm	inch	mm	

#### Three Phase, 480V Primary, 208 Y / 120 Secondary<sup>③</sup>

T3F30015A5RXXNJ	15	W/F	8	22	559	19	483	21	533	16	401	12	305	235
T3F30030A5RXXNJ	30	W/F	8	25	635	22	559	22	559	18	460	13	330	365
T3F30045A5RXXNJ	45	W/F	8	28	711	25	635	23.5	597	20	495	14.5	368	455
T3F30075A5RXXNJ	75	W/F	8	32	813	27	686	26	660	24	597	16	406	735
T3F30112A5RXXNJ	112.5	F	8	38	965	29	737	29	737	26	648	18	457	885
T3F30150A5RXXNJ	150	F	8	42	1067	33	838	32.5	826	30	762	21	533	1140
T3F30225A5RXXNJ	225	F	8	46	1168	35	889	37	940	31	782	25	635	1530
T3F30300A5RXXNJ	300	F	8	52	1321	35	889	37	940	31	782	25	635	1935

#### Three Phase, 600V Primary, 208 Y / 120 Secondary<sup>③</sup>

T3G30015A5RXXNJ	15	W/F	8	22	559	19	483	21	533	15.8	401	12	305	215
T3G30030A5RXXNJ	30	W/F	8	25	635	22	559	22	559	18.1	460	13	330	330
T3G30045A5RXXNJ	45	W/F	8	28	711	25	635	23.5	597	19.5	495	14.5	368	455
T3G30075A5RXXNJ	75	W/F	8	32	813	27	686	26	660	23.5	597	16	406	735
T3G30112A5RXXNJ	112.5	F	8	38	965	29	737	29	737	25.5	648	18	457	885
T3G30150A5RXXNJ	150	F	8	42	1067	33	838	32.5	826	30	762	21	533	1140
T3G30225A5RXXNJ	225	F	8	46	1168	35	889	37	940	30.8	782	25	635	1530
T3G30300A5RXXNJ	300	F	8	52	1321	35	889	37	940	30.8	782	25	635	1935

① Taps: 480v primary: FCAN 2@2.5%, FCBN 4@2.5%  
600v primary: FCAN 2@2.5%, FCBN 4@2.5%  
② See wiring diagram WD6 (page 7-20)

③ See wiring diagram WD5 (page 7-20)  
④ Please refer to enclosure figure on page 7-23 (Fig. 8)

# NRCAN Rated General Purpose Transformers

## Industrial Type Copper Winding

Selection



### Features:

- 15-250 kVA single phase  
15-300 kVA three phase
- Copper winding  
(standard 3 coil delta-wye three phase)
- High quality grain-oriented steel laminations
- Insulation class 220
- Compact and easy-to-install enclosure
- Quiet operation and adequate ventilation
- Manufactured to ISO standard upon request
- Epoxy Vacuum Impregnated (EVI)

### Options and Accessories:

- Electrostatic shield
- Special paint (other than ASA 61 grey)
- 115°C and 80°C temperature rise
- Operating frequencies other than 60 Hertz
- Special voltage (for domestic or export applications)
- Low loss and low noise special designs
- Anti-vibration pads
- Temperature probes
- Busbar to your specifications

### 150°C Rise - Primary 600 V or 480 V

Catalogue Number	kVA	Mounting <sup>①</sup>	Taps <sup>②</sup>	Dimensions						Weight		Noise level (dB)
				Height		Width		Depth		lbs	kg	
				in.	mm	in.	mm	in.	mm			

#### Single Phase, Secondary 120 / 240 V

T1*10015C5RXXN	15	W/F	4 X 2.5	30	762	18	457	14	349	185	84	50
T1*10025C5RXXN	25	W/F	4 X 2.5	30	762	18	457	14	349	227	103	50
T1*10037C5RXXN	37.5	F	4 X 2.5	33	838	21	533	16	400	321	146	50
T1*10050C5RXXN	50	F	4 X 2.5	33	838	21	533	16	400	352	160	50
T1*10075C5RXXN	75	F	4 X 2.5	33	838	21	533	16	400	453	206	55
T1*10100C5RXXN	100	F	4 X 2.5	47	1194	25	616	23	583	631	287	55
T1*10150C5RXXN	150	F	4 X 2.5	51	1295	28	718	27	685	805	366	60
T1*10200C5RXXN	200	F	4 X 2.5	51	1295	28	718	27	685	1043	474	65
T1*10250C5RXXN	250	F	4 X 2.5	58	1473	32	820	30	761	1342	610	65

#### Three Phase, Secondary 208 Y / 120 V

T3*30015C5RXXN	15	W/F	4 X 2.5	26	660	18	464	15	375	214	97	45
T3*30030C5RXXN	30	W/F	4 X 2.5	31	775	23	578	18	451	341	155	45
T3*30045C5RXXN	45	W/F	4 X 2.5	31	775	23	578	18	451	407	185	45
T3*30050C5RXXN	50	W/F	4 X 2.5	31	775	23	578	18	451	441	200	45
T3*30075C5RXXN	75	W/F	4 X 2.5	37	940	28	705	22	552	674	306	50
T3*30112C5RXXN	112.5	F	4 X 2.5	37	940	28	705	22	552	978	398	50
T3*30150C5RXXN	150	F	4 X 2.5	46	1168	31	787	24	616	1069	485	50
T3*30225C5RXXN	225	F	4 X 2.5	53	1346	37	927	29	724	1533	695	55
T3*30300C5RXXN	300	F	4 X 2.5	53	1346	37	927	29	724	1843	836	55

\* Primary Voltage – F = 480V, G = 600V. See page 7-3 for Catalogue Code Detail.

① W = Wall mount      F = Floor mount  
 ② Taps: Single phase: 15-250 kVA - 2 x FCAN, 2 x FCBN  
 Three phase: 15-300 kVA - 2 x FCAN, 2 x FCBN

All weights and dimensions are approximate and subject to change without notice.



# NRCAN Rated General Purpose Transformers

## Industrial Type Copper Winding

*Selection*

### Features:

- Large connection compartment for ease of wiring and installation
- Many sizes in stock and available for immediate shipment
- Quiet operation for installation flexibility
- Seismic certification for all units
- Space-saving design for easy handling and installation
- Termination lugs provided with transformer through 75 kVA
- Wall brackets available for units up to 75 kVA
- Vibration isolation pads provide quiet operation
- Staggered front loop taps for easy connection

### 150°C Rise - Primary 600V or 480V<sup>①</sup>

Catalogue Number	kVA	Mounting	Enclosure Figure <sup>④</sup>	Dimensions <sup>③</sup>										Weight lbs.
				A		B		C		D		E		
				inch	mm	inch	mm	inch	mm	inch	mm	inch	mm	
<b>Three Phase, 480V Primary, 208 Y / 120 Secondary<sup>②</sup></b>														
T3F30015C5RXXNJ	15	W/F	8	22	559	19	483	21	533	16	401	12	305	235
T3F30030C5RXXNJ	30	W/F	8	25	635	22	559	22	559	18	460	13	330	365
T3F30045C5RXXNJ	45	W/F	8	28	711	25	635	23.5	597	20	495	14.5	368	455
T3F30075C5RXXNJ	75	W/F	8	32	813	27	686	26	660	23.5	597	16	406	735
T3F30112C5RXXNJ	112.5	F	8	38	965	29	737	29	737	26	648	18	457	885
T3F30150C5RXXNJ	150	F	8	42	1067	33	838	32.5	826	30	762	21	533	1140
T3F30225C5RXXNJ	225	F	8	46	1168	35	889	37	940	31	782	25	635	1530
T3F30300C5RXXNJ	300	F	8	52	1321	35	889	37	940	31	782	25	635	1935
<b>Three Phase, 600V Primary, 208 Y / 120 Secondary<sup>③</sup></b>														
T3G30015C5RXXNJ	15	W/F	8	22	559	19	482.6	21	533	16	401	12	305	235
T3G30030C5RXXNJ	30	W/F	8	25	635	22	558.8	22	559	18	460	13	330	365
T3G30045C5RXXNJ	45	W/F	8	28	711	25	635	23.5	597	20	495	14.5	368	455
T3G30075C5RXXNJ	75	F	8	32	813	27	685.8	26	660	23.5	597	16	406	735
T3G30112C5RXXNJ	112.5	F	8	38	965	29	736.6	29	737	26	648	18	457	885
T3G30150C5RXXNJ	150	F	8	42	1067	33	838.2	32.5	826	30	762	21	533	1140
T3G30225C5RXXNJ	225	F	8	46	1168	35	889	37	940	31	782	25	635	1530
T3G30300C5RXXNJ	300	F	8	52	1321	35	889	37	940	31	782	25	635	1935

① Taps: 480v primary: FCAN 2@2.5%, FCBN 4@2.5%  
600v primary: FCAN 2@2.5%, FCBN 4@2.5%

③ See wiring diagram WD5 (page 7-20)

④ Please refer to enclosure figure on page 7-23 (Fig. 8)

② See wiring diagram WD6 (page 7-20)

# NRCAN Rated General Purpose Transformers

## K Rated - Industrial Type Aluminium Winding

Selection

Features:

- Large connection compartment for ease of wiring and installation
- Many sizes in stock and available for immediate shipment
- Quiet operation for installation flexibility
- Seismic certification for all units
- Space-saving design for easy handling and installation
- Termination lugs provided with transformer through 75 kVA
- Wall brackets available for units up to 75 kVA
- Vibration isolation pads provide quiet operation
- Staggered front loop taps for easy connection
- CSA certified (163067) and UL listed (E78376)



### 150°C Rise - Primary 600V<sup>①</sup>

Catalogue Number	kVA	Mounting	Enclosure Figure	Dimensions <sup>④</sup>										Weight lbs.
				A		B		C		D		E		
				inch	mm	inch	mm	inch	mm	inch	mm	inch	mm	
<b>Three Phase, 208 Y / 120 Secondary, K-4 Rated<sup>②</sup></b>														
T3G30015A5R1KNJ	15	W/F	8	22	559	19	483	21	533	16	401	12	305	210
T3G30030A5R1KNJ	30	W/F	8	25	635	22	559	22	559	18	460	13	330	310
T3G30045A5R1KNJ	45	W/F	8	28	711	25	635	23.5	597	20	495	14.5	368	400
T3G30075A5R1KNJ	75	F	8	32	813	27	686	26	660	24	597	16	406	585
T3G30112A5R1KNJ	112.5	F	8	38	965	29	737	29	737	26	648	18	457	775
T3G30150A5R1KNJ	150	F	8	42	1067	33	838	32.5	826	30	762	21	533	1000
T3G30225A5R1KNJ	225	F	8	52	1321	35	889	37	940	31	782	25	635	1315
T3G30300A5R1KNJ	300	F	8	60	1524	48	1219	43.5	1105	42	1067	27	686	1660

### Three Phase, 208 Y / 120 Secondary, K-13 Rated<sup>③</sup>

T3G30015A5R1MNJ	15	W/F	8	25	635	22	559	22	559	18	460	13	330	310
T3G30030A5R1MNJ	30	W/F	8	28	711	25	635	23.5	597	20	495	14.5	368	400
T3G30045A5R1MNJ	45	W/F	8	32	813	27	686	26	660	24	597	16	406	585
T3G30075A5R1MNJ	75	F	8	38	965	29	737	29	737	26	648	18	457	775
T3G30112A5R1MNJ	112.5	F	8	42	1067	33	838	32.5	826	30	762	21	533	1000
T3G30150A5R1MNJ	150	F	8	46	1168	35	889	37	940	31	782	25	635	1530
T3G30225A5R1MNJ	225	F	8	52	1321	35	889	37	940	31	782	25	635	1660
T3G30300A5R1MNJ	300	F	8	60	1524	48	1219	43.5	1105	42	1067	27	686	2460

① Taps: 480v primary: FCAN 2@2.5%, FCBN 2@2.5%  
600v primary: FCAN 2@2.5%, FCBN 2@2.5%  
② See wiring diagram WD5

③ See wiring diagram WD5  
④ Please refer to enclosure figure on page 7-23 (Fig. 8)

# NRCAN Rated General Purpose Transformers

## K Rated - Industrial Type Copper Winding

*Selection*

Features:

- Large connection compartment for ease of wiring and installation
- Many sizes in stock and available for immediate shipment
- Quiet operation for installation flexibility
- Seismic certification for all units
- Space-saving design for easy handling and installation
- Termination lugs provided with transformer through 75 kVA
- Wall brackets available for units up to 75 kVA
- Vibration isolation pads provide quiet operation
- Staggered front loop taps for easy connection
- CSA certified (163067) and UL listed (E78376)

### 150°C Rise - Primary 600V<sup>①</sup>

Catalogue Number	kVA	Mounting	Enclosure Figure <sup>④</sup>	Dimensions <sup>④</sup>										Weight lbs.
				A		B		C		D		E		
				inch	mm	inch	mm	inch	mm	inch	mm	inch	mm	
<b>Three Phase, 208 Y / 120 Secondary, K-4 Rated<sup>②</sup></b>														
T3G30015C5R1KNJ	15	W/F	8	22	559	19	483	21	533	15.8	401	12	305	235
T3G30030C5R1KNJ	30	W/F	8	25	635	22	559	22	559	18.1	460	13	330	335
T3G30045C5R1KNJ	45	W/F	8	28	711	25	635	23.5	597	19.5	495	14.5	368	400
T3G30075C5R1KNJ	75	F	8	32	813	27	686	26	660	23.5	597	16	406	660
T3G30112C5R1KNJ	112.5	F	8	38	965	29	737	29	737	25.5	648	18	457	885
T3G30150C5R1KNJ	150	F	8	42	1067	33	838	32.5	826	30	762	21	533	1140
T3G30225C5R1KNJ	225	F	8	52	1321	35	889	37	940	30.8	782	25	635	1530
T3G30300C5R1KNJ	300	F	8	60	1524	48	1219	43.5	1105	42	1067	27	686	1935
<b>Three Phase, 208 Y / 120 Secondary, K-13 Rated<sup>③</sup></b>														
T3G30015C5R1MNJ	15	W/F	8	25	635	22	559	22	559	18	460	13	330	310
T3G30030C5R1MNJ	30	W/F	8	28	711	25	635	23.5	597	20	495	14.5	368	400
T3G30045C5R1MNJ	45	W/F	8	32	813	27	686	26	660	24	597	16	406	585
T3G30075C5R1MNJ	75	F	8	38	965	29	737	29	737	26	648	18	457	775
T3G30112C5R1MNJ	112.5	F	8	42	1067	33	838	32.5	826	30	762	21	533	1000
T3G30150C5R1MNJ	150	F	8	46	1168	35	889	37	940	31	782	25	635	1530
T3G30225C5R1MNJ	225	F	8	52	1321	35	889	37	940	31	782	25	635	1660
T3G30300C5R1MNJ	300	F	8	60	1524	48	1219	43.5	1105	42	1067	27	686	2460

① Taps: 600v primary: FCAN 2@2.5%, FCBN 2@2.5%  
 ② See wiring diagram WD5 (page 7-20)  
 ③ See wiring diagram WD5 (page 7-20)

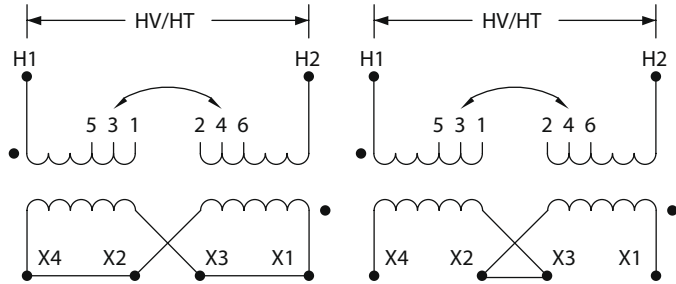
④ Please refer to enclosure figure on page 7-23 (Fig. 8)

# Dry Type Transformers

## Wiring Diagrams

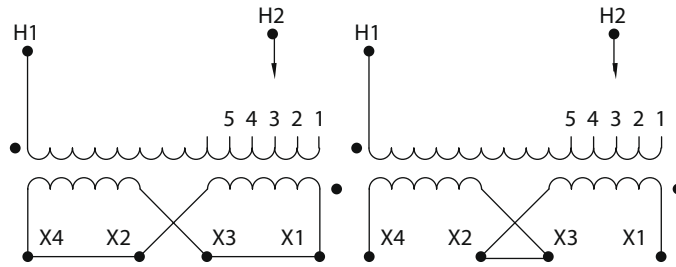
*Selection*

WD1 wiring diagram



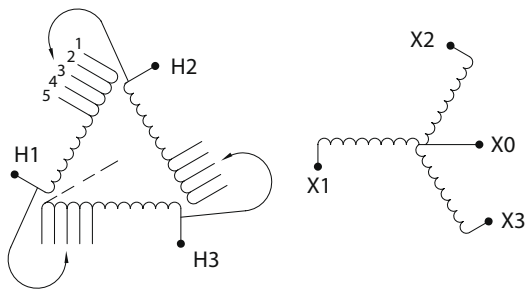
% Voltage	Primary Volts	Connect lines to	Inter-connect
105.0%	504 630	H1, H2	1-2
102.5%	492 615	H1, H2	2-3
100.0%	480 600	H1, H2	3-4
97.5%	468 585	H1, H2	4-5
95.0%	456 570	H1, H2	5-6
	Secondary Volts	Connect lines to	Inter-connect
	240	X1, X4	X2-X3
	120	X1 & X3, X2 & X4	X2-X4, X1-X3
	120/240	X1, X2, X4	X2-X3

WD2 wiring diagram



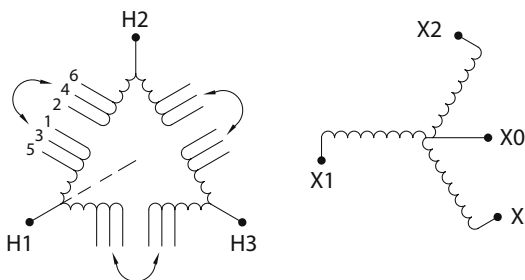
% Voltage	Primary Volts	Connect lines to	Inter-connect
105.0%	504 630	H1, H2	1
102.5%	492 615	H1, H2	2
100.0%	480 600	H1, H2	3
97.5%	468 585	H1, H2	4
95.0%	456 570	H1, H2	5
	Secondary Volts	Connect lines to	Inter-connect
	240	X1, X4	X2-X3
	120	X1 & X3, X2 & X4	X2-X4, X1-X3
	120/240	X1, X2, X4	X2-X3

WD3 wiring diagram



% Voltage	Primary Volts	Connect lines to	Inter-connect
105.0%	504 630	H1, H2, H3	1
102.5%	492 615	H1, H2, H3	2
100.0%	480 600	H1, H2, H3	3
97.5%	468 585	H1, H2, H3	4
95.0%	456 570	H1, H2, H3	5
	Secondary Volts	Connect lines to	Inter-connect
	208	X1, X2, X3	
	120	X1,X0 X2,X0 X3, X0	

WD4 wiring diagram



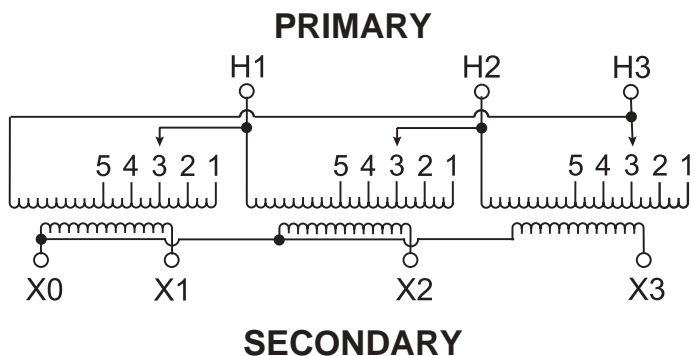
% Voltage	Primary Volts	Connect lines to	Inter-connect
105.0%	630	H1, H2, H3	1-2
102.5%	615	H1, H2, H3	2-3
100.0%	600	H1, H2, H3	3-4
97.5%	585	H1, H2, H3	4-5
95.0%	570	H1, H2, H3	5-6
	Secondary Volts	Connect lines to	Inter-connect
	208	X1, X2, X3	
	120	X1,X0 X2,X0 X3, X0	

# Dry Type Transformers

## Wiring Diagrams

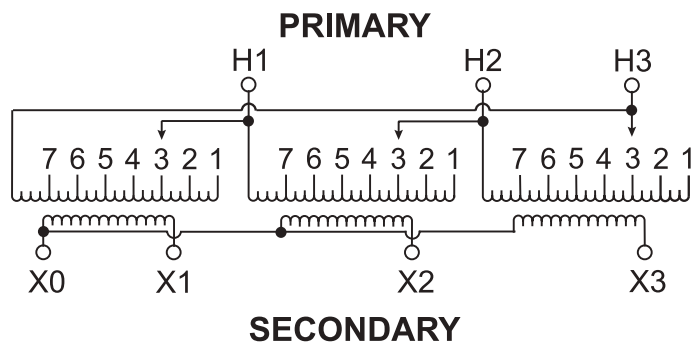
*Selection*

WD5 wiring diagram



Primary Volts	Connect lines to
630	H1,H2,H3
615	H1,H2,H4
600	H1,H2,H5
585	H1,H2,H6
570	H1,H2,H7
Secondary Volts	Connect lines to
208	X1,X2,X3
120	X0 - X1 or X2 or X3

WD6 wiring diagram

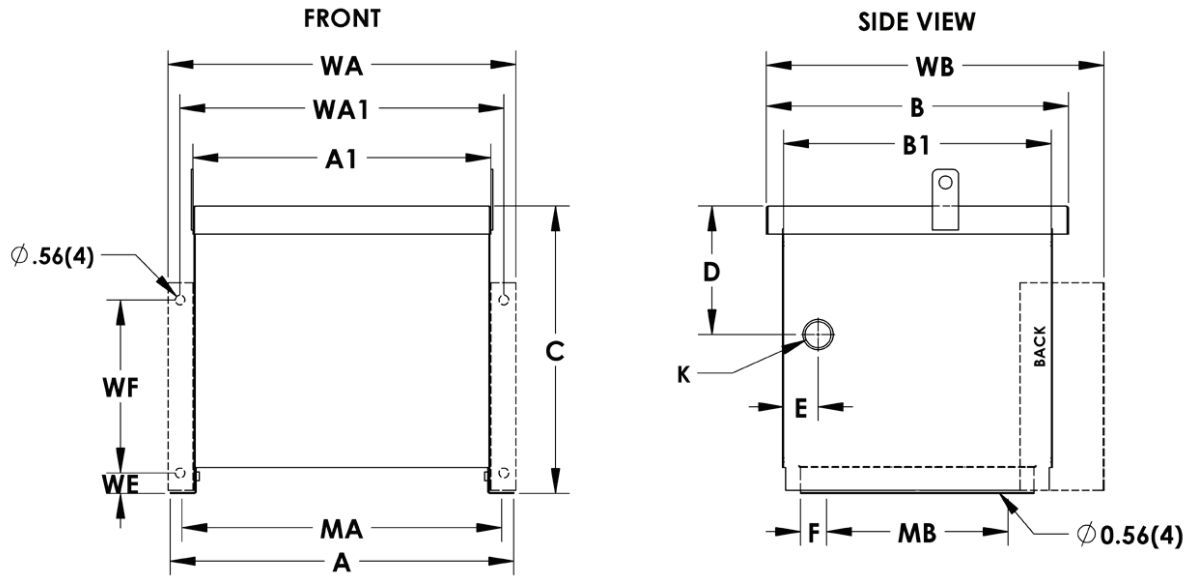


Primary Volts	Connect lines to
504	H1,H2,H3
492	H1,H2,H4
480	H1,H2,H5
468	H1,H2,H6
456	H1,H2,H7
444	H1,H2,H8
432	H1,H2,H9
Secondary Volts	Connect lines to
208	X1,X2,X3
120	X0 - X1 or X2 or X3

# Dry Type Transformers

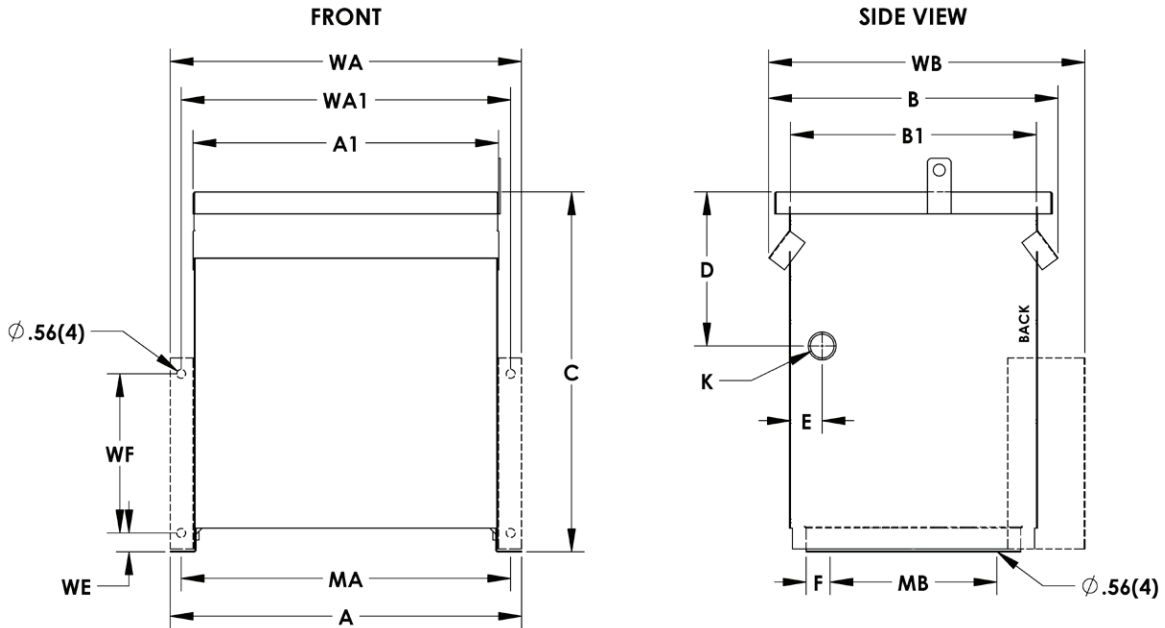
## Enclosure Figures

*Selection*



Enclosure	Dimensions in Inches															
	A	A1	B	B1	C	D	E	F	K	MA	MB	WA*	WA1*	WB*	WE*	WF*
FIG1	19.9	17.3	17.5	15.5	17.6	7.4	2.0	1.5	1.75 K.O.	18.5	10.5	20.1	18.7	19.5	2.2	10.0

\* Dimensions of enclosure when wall-mounting bracket installed (optional accessory component).



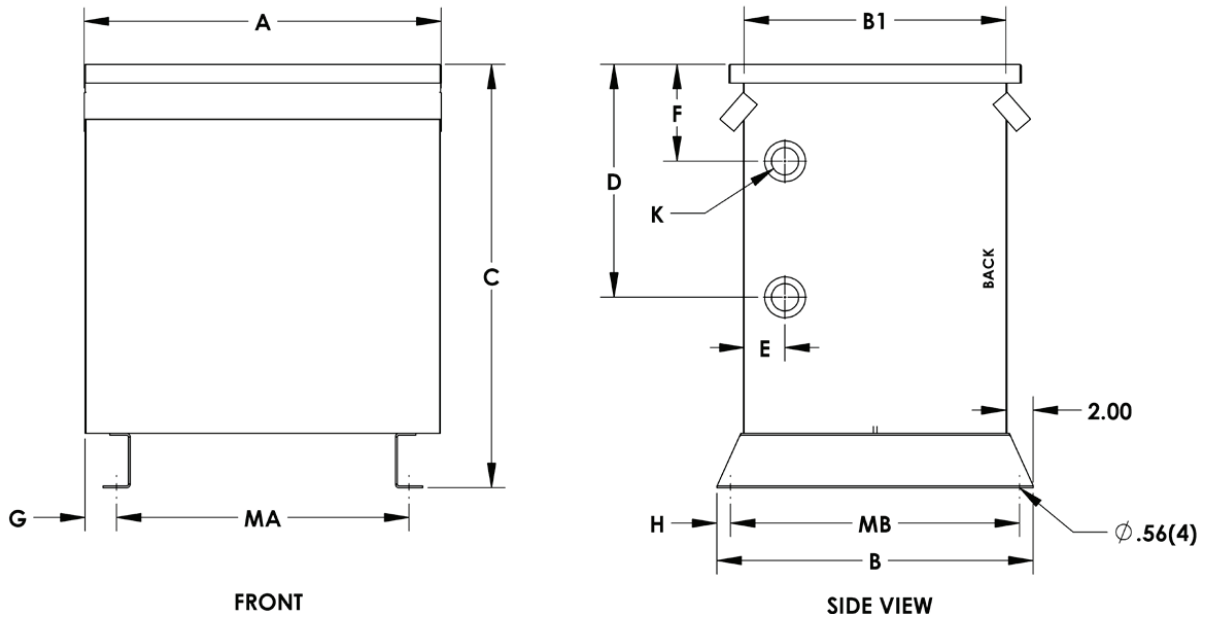
Enclosure	Dimensions in Inches															
	A	A1	B	B1	C	D	E	F	K	MA	MB	WA*	WA1*	WB*	WE*	WF*
FIG2	22.1	19.2	18.2	15.5	23.6	9.7	2.0	1.5	1.75 K.O.	20.8	10.5	22.1	20.8	19.9	2.2	10.0
FIG3	24.9	22.0	19.4	16.5	25.6	12.0	2.0	2.0	1.75 K.O.	23.5	10.5	24.9	23.5	21.0	2.2	10.0

\* Dimensions of enclosure when wall-mounting bracket installed (optional accessory component).

# Dry Type Transformers

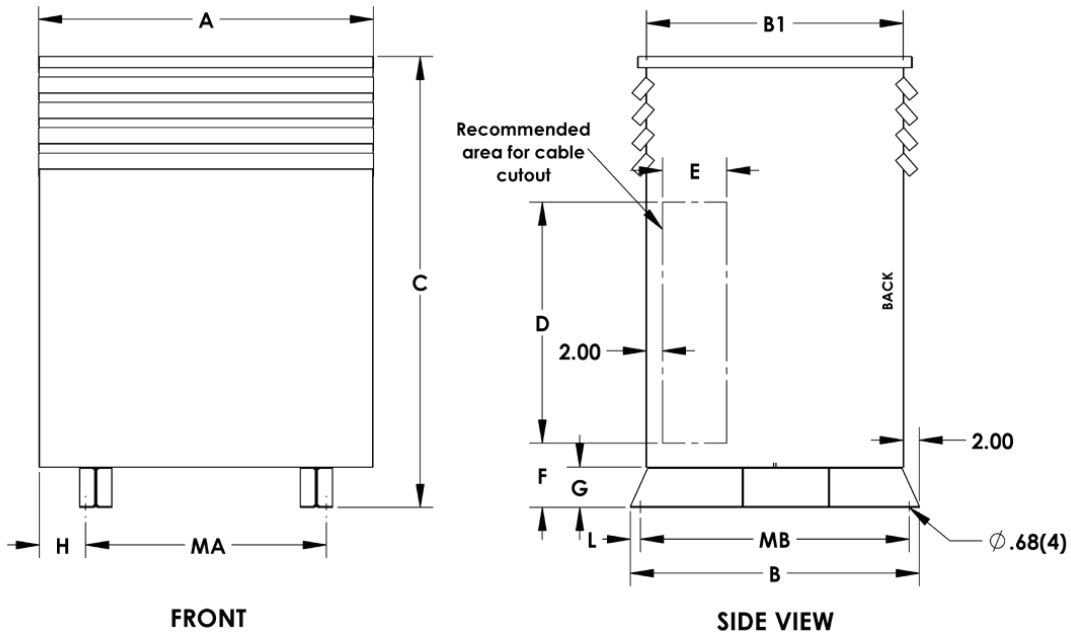
## Enclosure Figures

Selection



Enclosure	Dimensions in Inches											
	A	B	B1	C	D	E	F	G	H	K	MA	MB
Fig 4	26.3	23.3	19.3	31.1	17.1	3.0	7.1	2.3	1.0	2.0 x 3.0 K.O.	21.5	21.3
Fig 5	29.0	26.5	22.5	39.1	24.1	3.0	14.1	2.7	1.0	2.0 x 3.0 K.O.	23.5	24.5
Fig 6	37.8	30.0	26.0	48.4	33.4	3.0	23.4	6.8	1.0	2.0 x 3.0 K.O.	24.0	28.0

\* Dimensions of enclosure when wall-mounting bracket installed (optional accessory component).



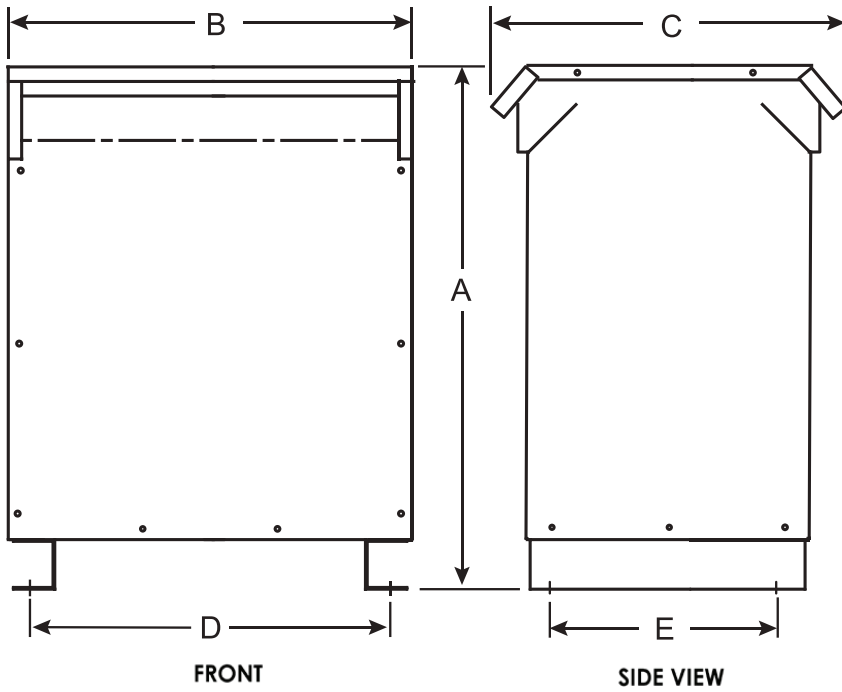
Enclosure	Dimensions in Inches											
	A	B	B1	C	D	E	F	G	H	L	MA	MB
Fig 7	41.8	36.0	32.0	56.1	30.0	8.0	8.0	5.0	5.9	0.8	30.0	34.5

\* Dimensions of enclosure when wall-mounting bracket installed (optional accessory component).

# Dry Type Transformers

## Enclosure Figures

*Selection*



Enclosure	
Fig 8	Enclosure figure 8 applies to all item numbers ending with NJ