



| Controlguide SCPS



The future of Track Worker Safety:
Leveraging the signaling system and mobile
devices to protect track workers and increase the
efficiency of track works.

Controlguide SCPS (Signalling Control Protection System)

Product Description

Working in the tracks comes with huge challenges. How to guarantee the safety of the track workers without unforeseen impact on train traffic? **Controlguide SCPS** provides protection to track workers by

The Controlguide SCPS solution

- ✓ Safe cloud-based application
- ✓ Possession management
- ✓ Timely warning system
- ✓ Automation of the alarm system
- ✓ Compatibility with wearable for personal protection
- ✓ Train detection via signaling system



using the signaling system to warn track workers of approaching trains and allow their passage only when the safety position of the worker is confirmed.

Controlguide SCPS offers an end-to-end solution. It interconnects the signaling system with track work personnel via a safe cloud application and mobile devices:



Signaling systems

- Tracking train location
- Interlocking, OCS, RBC, etc.



Cloud application

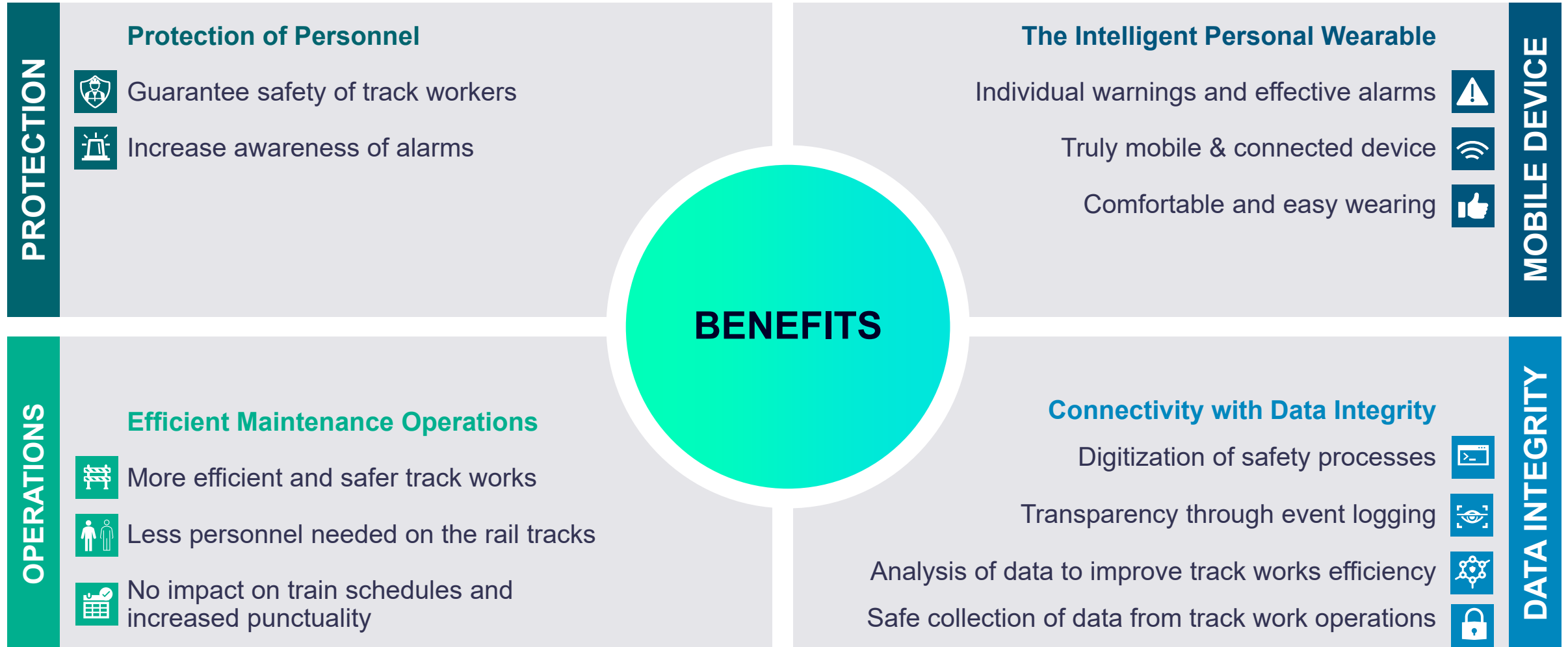
- Model of the business logic and country specific processes
- Setup, warning, and protection



Personal wearable

- Alarm device for track workers
- Wireless and easy to carry

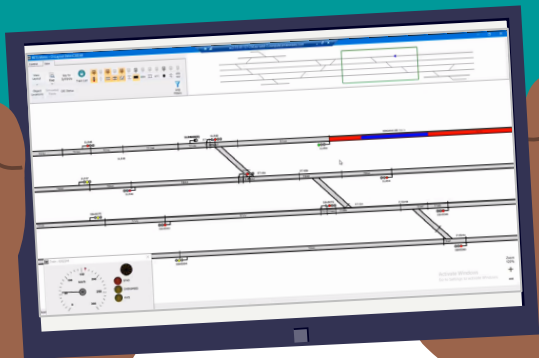
Benefits of Controlguide SCPS



Key Functionalities

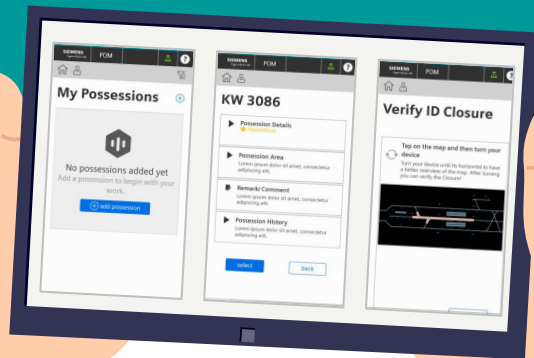
Fully Automated System

- Automatic detection of approaching trains without additional track equipment and transmission of warning alarms to track workers
- Assurance of worker protection and position tracking to backend office



Possession Management

- Remote protection request of the work zone from the track workers safety responsible
- Blockage of the work area to prevent trains to pass through, until track workers safety is ensured.



Timely Warning to Track Workers

- Track workers are warned in due time of approaching trains so they can move out of the tracks, confirm their position of safety and let the train pass without any impact on the train schedule



Key Functionalities of the personal wearable

Truly Mobile

- 12 hours battery capacity
- Wireless communication
- No physical installation on the trackside



Individual Warning

- LEDs and haptic (vibration) alarm
- Increased visibility of warnings
- Temperature resistant -20°C to +50°C
- IP65 rated



Comfortable Wearing

- Easy to put on
- Comfortable to wear
- Light weight (250 grams)



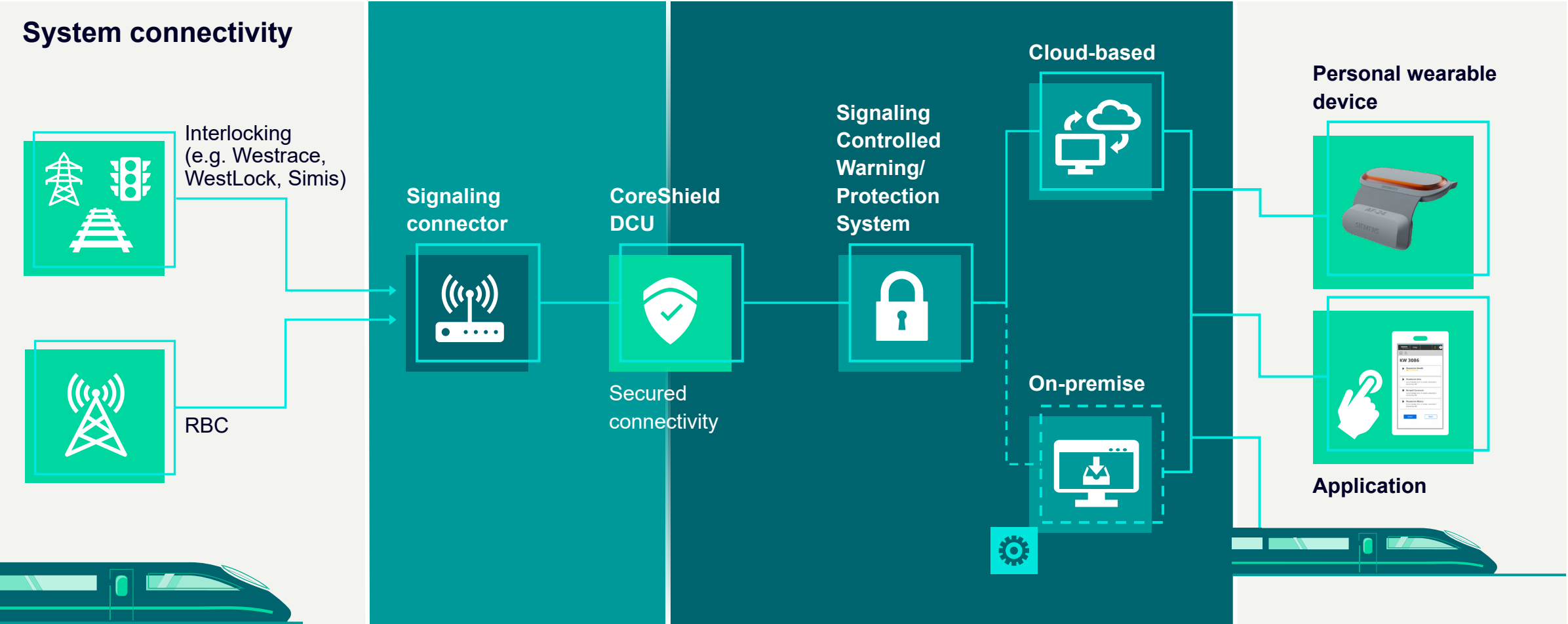
System Architecture

➤ Data sources

➤ System connectivity

➤ Data processing

➤ Output front end



| Contact

Pascal Marly

Product Lifecycle Manager

Siemens Mobility GmbH
SMO SWE RC-BE S
Avenue Fonsny 38
1060 Brussels
Belgium

Mobile: +32 47398 6650

E-Mail: pascal.marly@siemens.com

Disclaimer

© Siemens 2022

Subject to changes and errors. The information given in this document only contains general descriptions and/or performance features which may not always specifically reflect those described, or which may undergo modification in the course of further development of the products. The requested performance features are binding only when they are expressly agreed upon in the concluded contract.

All product designations may be trademarks or other rights of Siemens AG, its affiliated companies or other companies whose use by third parties for their own purposes could violate the rights of the respective owner.