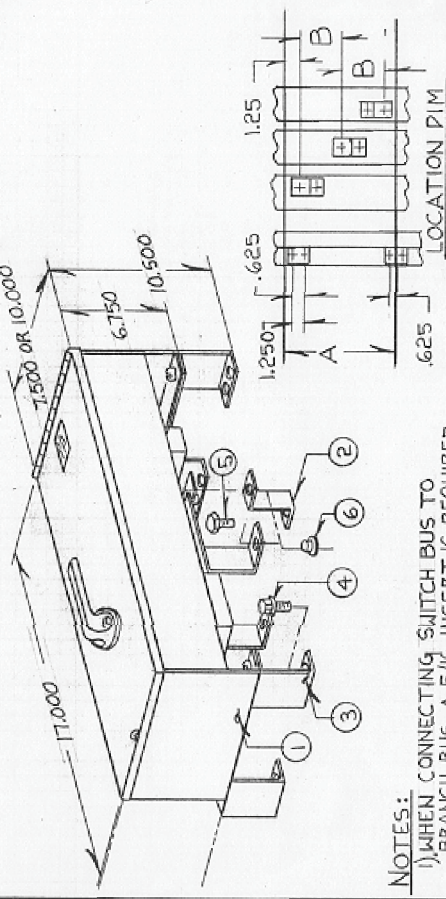


REVISIONS			
REV	C.N.	DESCRIPTION	DATE BY
0	1A036		8-26-88 RA
1	1A924		5-24-91 RA
2	1B-908		4-20-95 <i>Raw</i>



**NOTES:**  
 1) WHEN CONNECTING SWITCH BUS TO BRANCH BUS, A 5/16" INSERT IS REQUIRED IN ALUM. (ONLY) BRANCH BUS.  
 2) WHEN MULTIPLE UNITS ARE INSTALLED, EACH MOUNTING BRACKET SUPPORTS ONE CORNER OF TWO (2) UNITS.

FOR FUSIBLE CAT. NOS.	7 1/2" UNITS	10" UNITS
V7E2204	V7F3204	V7F2604
	V7F2604	V7F3604

TORQUE VALUES	
50 IN.-LBS. AL.	
72 IN.-LBS. CU.	

**⚠ DANGER**

**Hazardous voltage. Will cause death or serious injury.**

**Keep out. Qualified personnel only. Disconnect and lock off all power before working on this equipment.**

<b>CONFIDENTIAL - Property of Siemens Industry, Inc.</b>	
Siemens Industry, Inc. Building Technologies Division	
VACU-BREAK MOUNTING ▲ F2 BRANCH BUS KIT 7.500" x 10.000" SINGLE UNIT	
UNLESS OTHERWISE SPECIFIED DIMENSIONS ARE IN INCHES AND DECIMALS ARE NON-CUMULATIVE AND ARE OTHERWISE SPECIFIED OTHERWISE	REV 2
DATE 9-21-88	DWG NO. 11-B-2006-00
DATE 9-21-88	SCALE NTS
DATE 9-21-88	SHEET 1 OF 3

FOR USE WITH 7.5" AND 10" HIGH SINGLE UNITS (200A) MOUNTED IN SPP/FPP/S5/F2/P5 PANELBOARDS (DEEP BOX).

APVD	SH	DESCRIPTION	PC. NO.	QTY.
5-12-95		1 FUSIBLE SWITCH	CAT. NO. *	1
		2 VACU-BREAK BRANCH BUS	11-7025-01	3
		3 VACU-BREAK MOUNTING BRACKET	11-6043-01	4
		4 1/4-20 X 3/8 SHWSW	11-1553-02	8
		▲ 5 STRAP-BUS HARDWARE KIT	11-B-2022-05	1
		6		
		7 NEUTRAL LUG ASSEMBLY	12-B-2105-05	1
		8		
		9		
		10		
		11		
		12		
		13		
		14 INSTRUCTION SHEET	31-1242-01	1
		15 CARTON LABEL	15-A-1027-01	1
		16 CARTON	48000989	1
		17		
		18		
		19		
		20		
		21		
		22		
		23		
		24		
		25		
		26		
		27		
		28		
		29		
		30		
		31		
		32		
		33		
		34		
		35		
		36		
		37 * VACU-BREAK CAT. NO. F671D		
		38 7 1/2" UNITS - FOR FUSIBLE SWITCH CAT. NOS.		
		39 V7E2204		
		40 10" UNITS - FOR FUSIBLE SWITCH CAT. NOS.		
		41 V7F3204, V7F2604, V7F3604		
		42		
		43		
		44 MERCHANDISE KIT KIT. NO. F671D		
SH	5-12-95			
BY	RAW			
5-12-95				
4:1E-166B	12-11-09			
1:1C-831A	04-12-04			
1:1C-831B	07-24-06			
3:1E-053A	1-10-07			
Revisions	0: 1B-908			

Confidential - Property of Siemens Industry Norcross, GA Building Technologies Division	VACU-BREAK MOUNTING	11-B-2006-03
	COPPER BRANCH BUS F2	Dwg No.
	Title	Sht. 1 Of 1
		4 Rev.