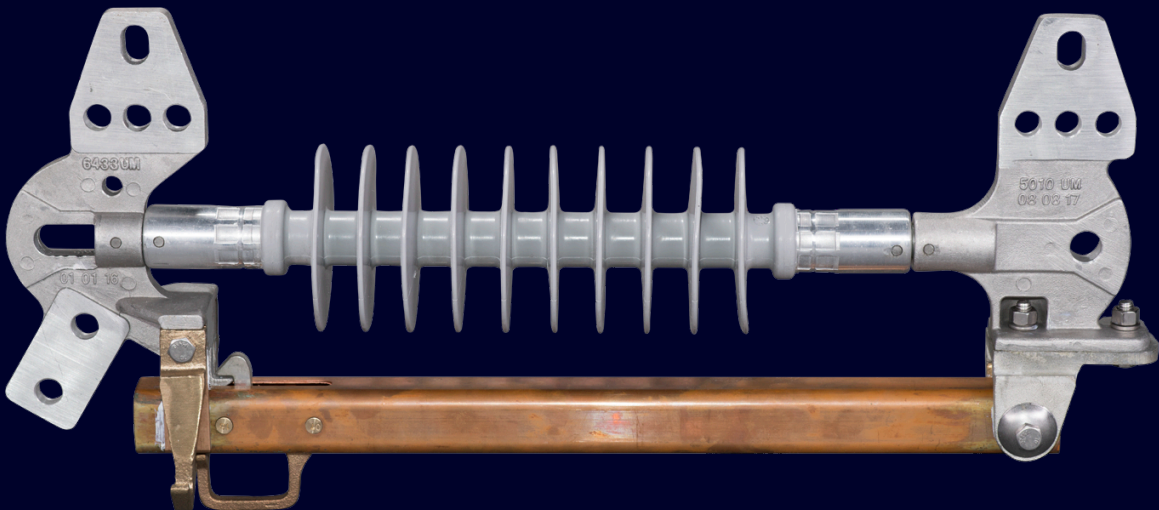


RUGGED AND RELIABLE

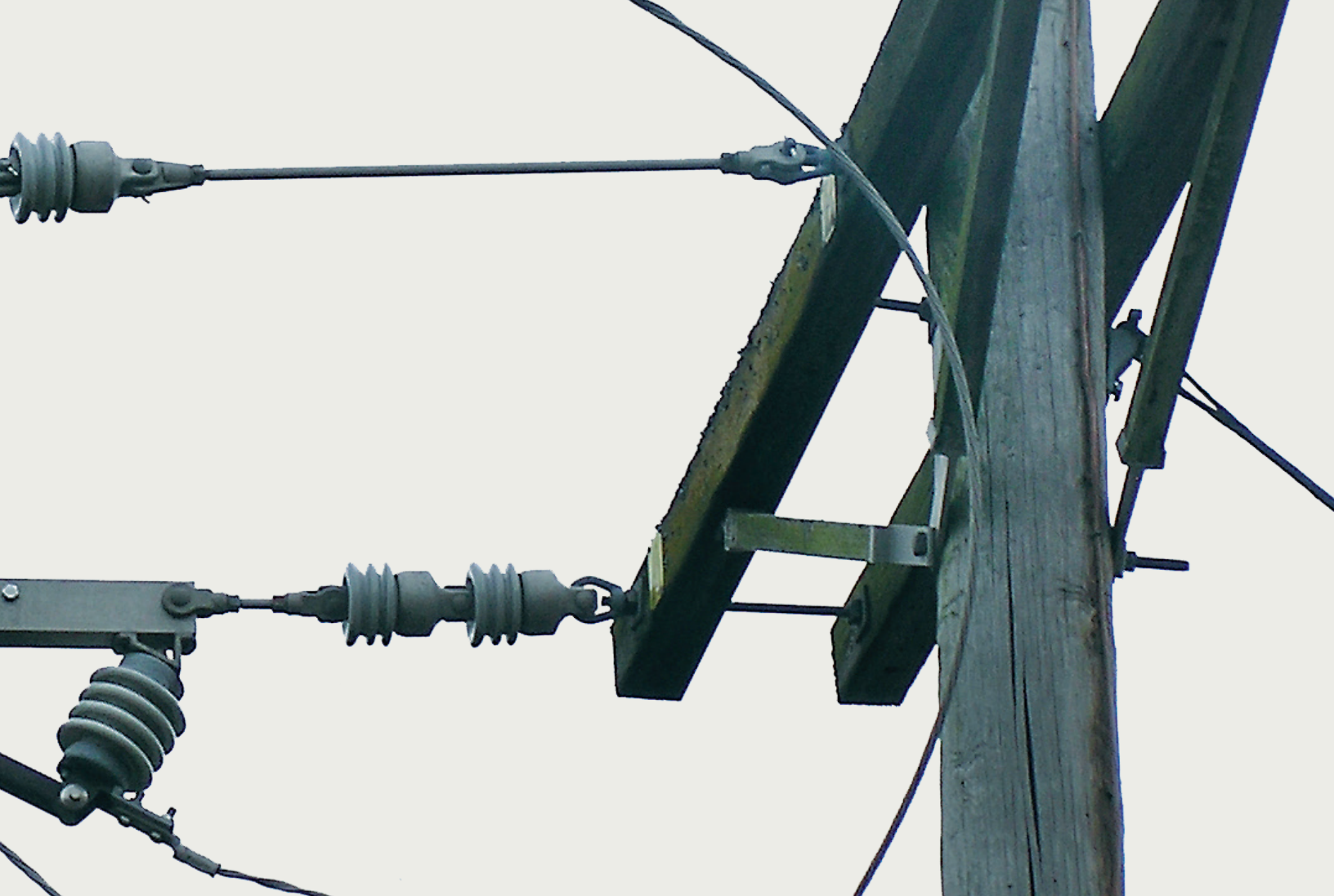
Distribution class **disconnect switches**

Types SE, SEL, LER, SER, E, and EF
usa.siemens.com/disconnectswitches





Siemens overhead disconnect switches, formally Bridges Electric Inc. have been manufactured since 1962. With a one-of-a-kind, robust, tubular blade system, our switches are rugged and close easily without facing alignment issues. Our United States based manufacturing plant along with our superior customer service team are conveniently located in Heber Springs, Arkansas. We strive to continuously improve the quality of our processes to provide products, documentation, and services meeting or exceeding our customers' expectations. By listening to our customers, we provide unique products including our SE/SEL series disconnect with closer arm based on a lineman's recommendation for a pull to open, pull to close in-line switch.

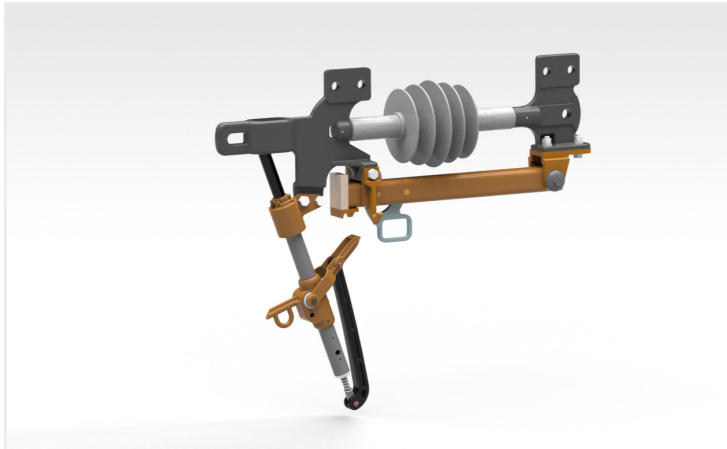


Index

Line tension disconnects	3	Type LER disconnect options and accessories	16
Type SE with loadbreak hooks	5	Type LER line tap disconnect	17
Type SE non-loadbreak	7	Type SER single insulator disconnect	19
Type SE with quick break	8	Type E distribution interrupter switch with Saf-T-Gap interrupter	21
Type SEL with Saf-T-Gap interrupter	9	Type EF distribution class disconnect with loadbreak hooks	23
Type SEL line tension disconnect with closer arm	10	Notes	25
Type SEL line tension disconnect accessories	11		
Type LER line tap disconnect	13		
Type LER with and without loadbreak hooks	14		
Type LERwith Saf-T-Gap interrupter	15		

Line tension disconnects

Ruggedly built and reliable, the type SE and type SEL line tension disconnects splice right on to the line. Offering quick and safe line maintenance, they safely support the conductor while providing the required insulation gap.

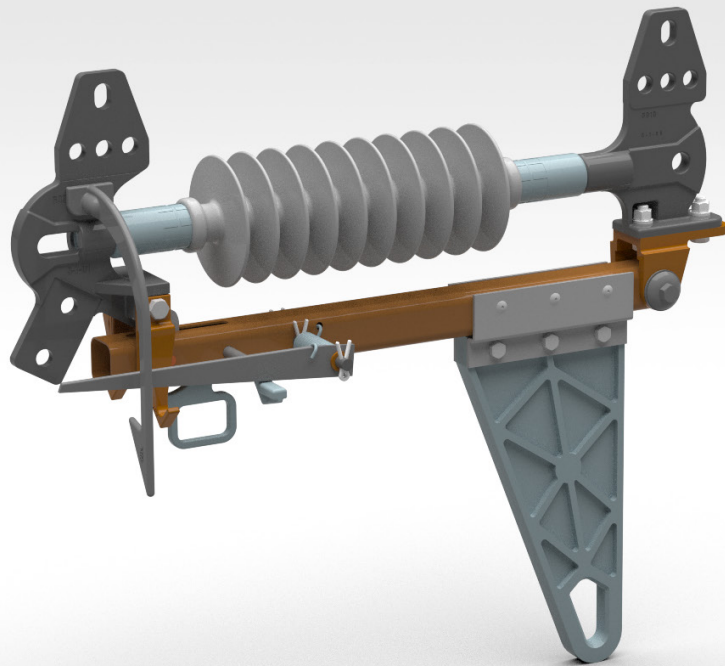


Type SE and type SEL line tension disconnects offer the following advantages:

- UV stabilized, polymer insulators
- Lightweight design minimizes conductor loading – may be used with smaller conductors
- Slim 4 1/4" diameter insulator profile – easier to cover for hot line work
- Rigid square tubular blade and high-pressure coin silver contacts
- Loadbreak hooks available
- Loadbreak versions available
- Quick break versions available
- Closer arm versions available.



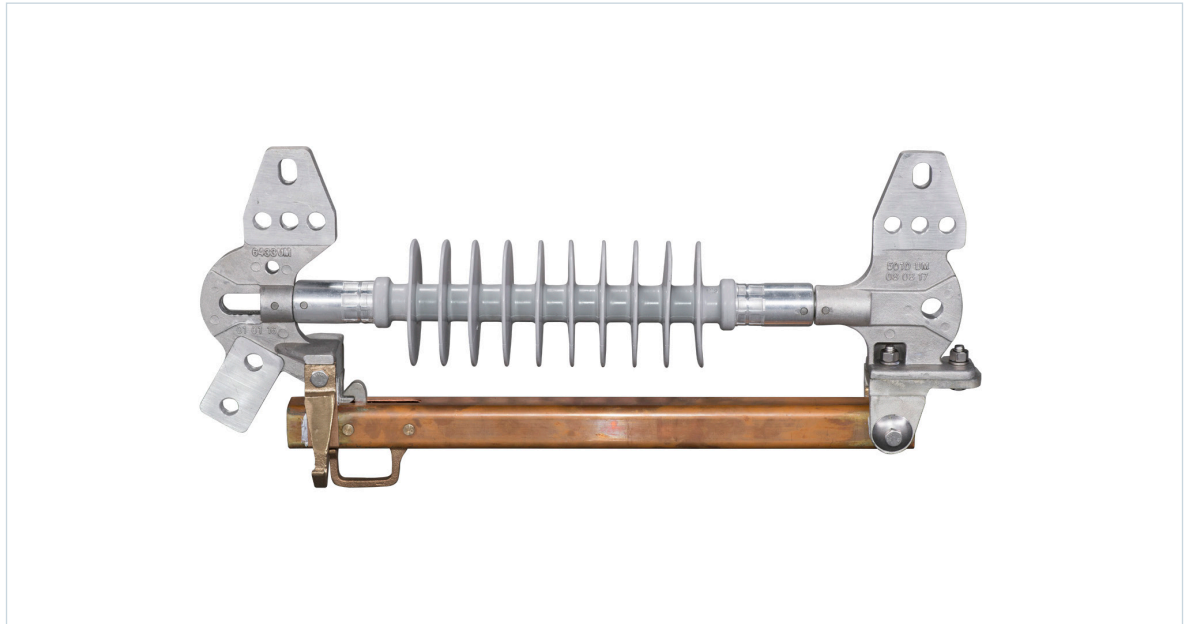
By listening to our customers, we provide unique products including our SE/SEL series disconnect with closer arm based on a lineman's recommendation for a pull to open, pull to close in-line switch."

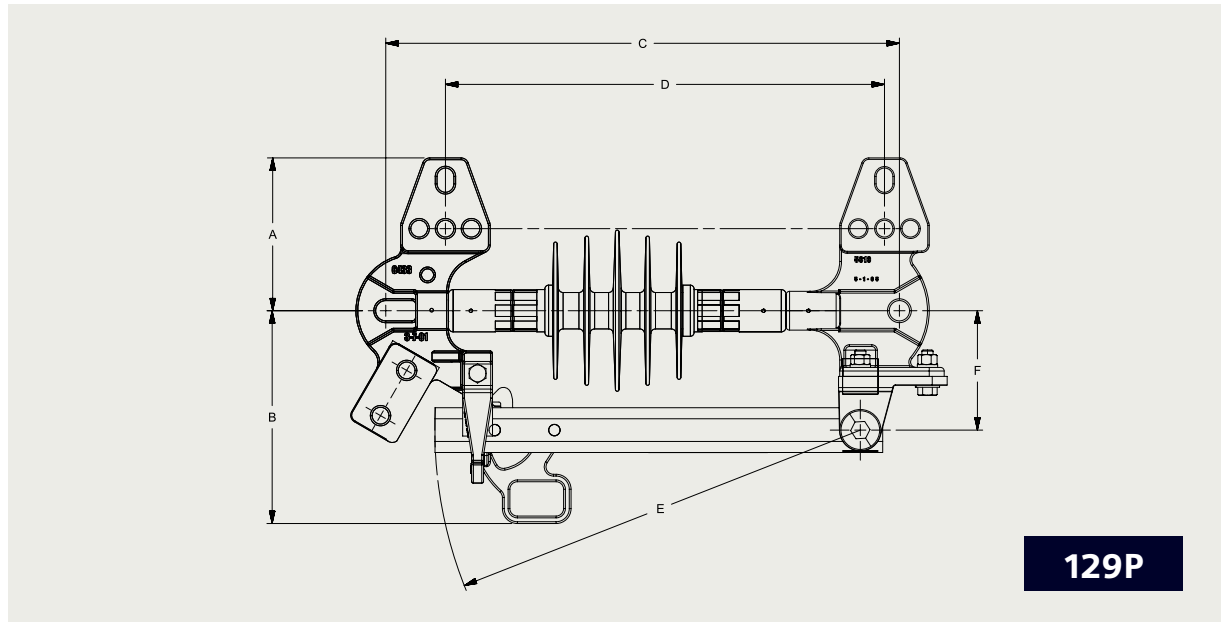


Type SE with loadbreak hooks

For use with a loadbreak tool

- Optional 180° blade catch on all 200 kV BIL SE switches with loadbreak hooks
- Tensile tested: 7,500 lbs.
- Ultimate tensile: 15,000 lbs.





Type SE with loadbreak hooks

Amps	Catalog #	Max. kV	kV BIL	Dimensions - inches						Polymer Net weight (lbs.)
				A	B	C	D	E	F	
600	127P	25	150	5.1	6.2	17.1	14.6	14.0	4.0	14
600	327P	38	200	5.1	6.2	22.7	20.2	19.6	4.0	13
900	129P	25	150	5.1	6.2	17.1	14.6	14.0	4.0	14
900	329P	38	200	5.1	6.2	22.7	20.2	19.6	4.0	14
1,200	195P	25	150	4.8	7.1	19.4	16.5	15.8	4.0	16
1,200	395P	38	200	4.8	7.1	24.9	22.0	21.4	4.0	16

Type SE non-loadbreak

For use where a loadbreak provision is not required

- Optional 180° blade catch on all 200 kV BIL SE switches with loadbreak hooks
- Tensile tested: 7,500 lbs.
- Ultimate tensile: 15,000 lbs.

Type SE with non-loadbreak

Amps	Catalog #	Max. kV	kV BIL	Dimensions - inches						Polymer Net weight (lbs.)
				A	B	C	D	E	F	
1,200	190P	25	150	4.8	7.1	19.4	16.5	15.8	4.0	16
1,200	390P	38	200	4.8	7.1	24.9	22.0	21.4	4.0	16

Type SE with quick break

The quality of an SE switch with the benefit of a quick-break device

- The quick-break option is available on all distribution class hookstick disconnects
- Optional 180° blade catch on all 200 kV BIL SE switches with quick break
- All other dimensions and ratings are the same as the standard switch equivalent.

Type SE part numbering table

	Position	1	2	3	4	5	6	7
Catalog #		■	■	■	P	O	O	O
Voltage and BIL								
25 kV, 150 kV BIL		1						
38 kV, 200 kV BIL		3						
Continuous current capacity								
600 A with load break hooks			2	7				
900 A with load break hooks			2	9				
1,200 A with load break hooks			9	5				
1,200 A without load break hooks			9	0				
Insulator								
Polymer insulators					P			
Options								
Quick break						Q	B	
Closer arm						V		
180° blade catch (not an option with closer arm)						C		
Catalog number example								
25 kV, 150 kV BIL		1						
600 A with load break hooks			2	7				
Polymer insulators					P			
Quick break						Q	B	
Closer arm								V
Final part number		1	2	7	P	Q	B	V

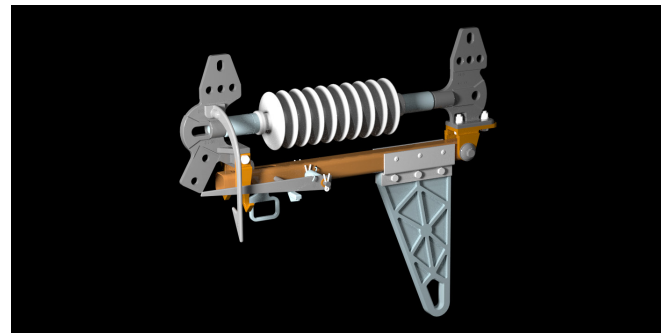
■ = Required O = Option code

Notes:

Add the letter "V" as a suffix to the catalog number (for example: 127PV) for closer arm.

Add "QB" as a suffix to the catalog number (for example: 127PQB) for quick break.

Polymer insulators are standard on all SE parts.



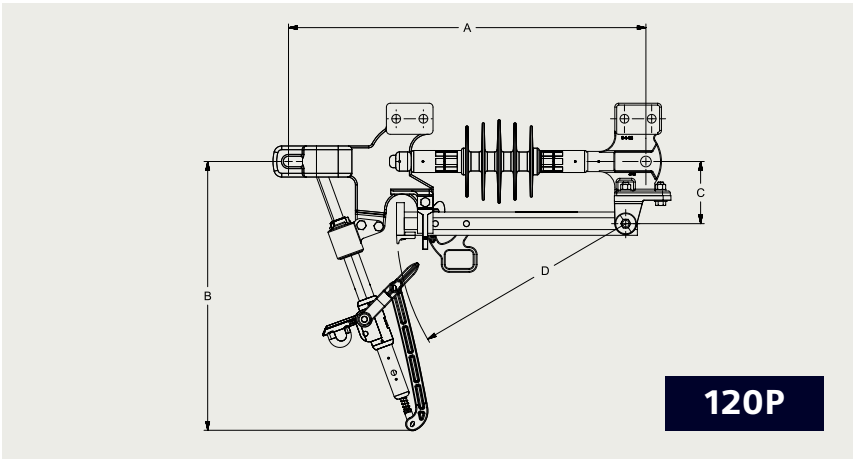
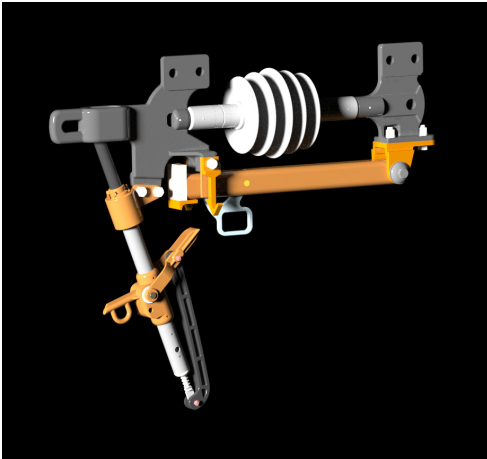
Type SEL with Saf-T-Gap interrupter

The type SEL offers all the benefits of the standard type SE switches plus the same high quality Saf-T-Gap expulsion interrupter. The plug-in Saf-T-Gap interrupter changes in seconds with a standard shotgun-style hookstick.

- Tensile tested: 5,000 lbs.
- Ultimate tensile: 10,000 lbs.
- Optional 180° blade catch on all 200 kV BIL SEL switches.

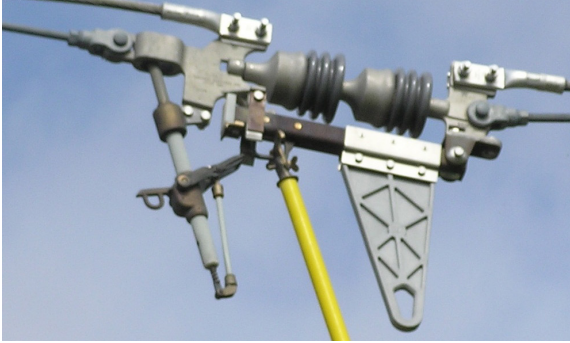
Type SEL with Saf-T-Gap interrupter

Amps	Catalog #	Max. kV	kV BIL	Dimensions - inches				Polymer
				A	B	C	D	Net weight (lbs.)
600	120P	25	150	22.9	17.0	4.0	14.5	15
600	340P	38	200	35.0	23.2	4.0	22.0	22
900	129P	25	150	22.9	17.0	4.0	14.5	14
900	349P	38	200	35.0	23.2	4.0	22.0	22

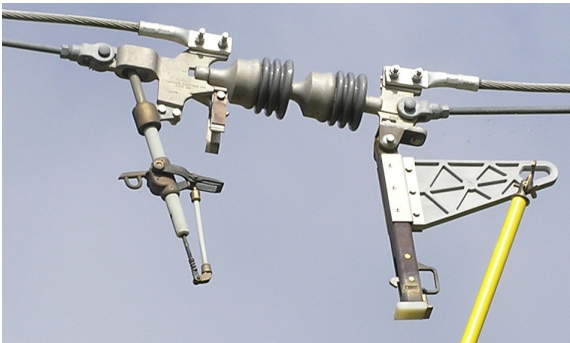


Type SEL

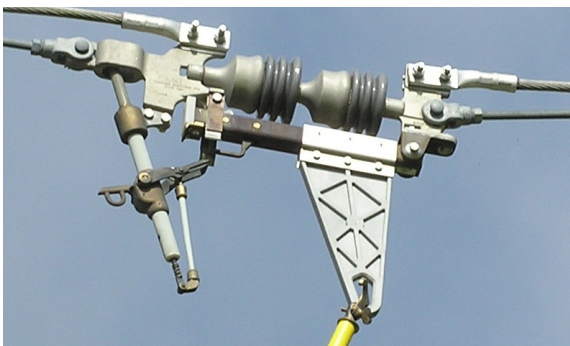
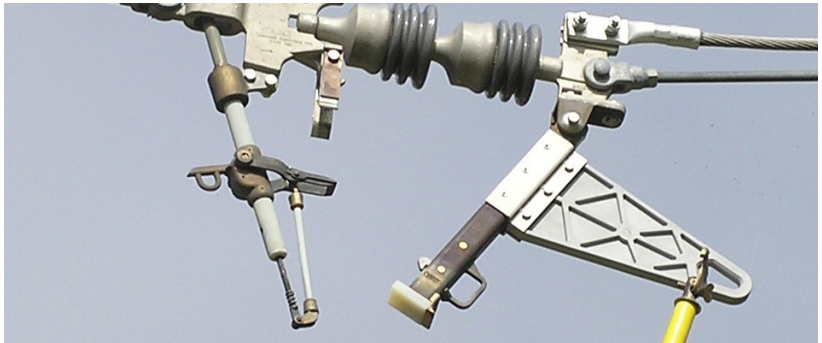
line tension disconnect with closer arm



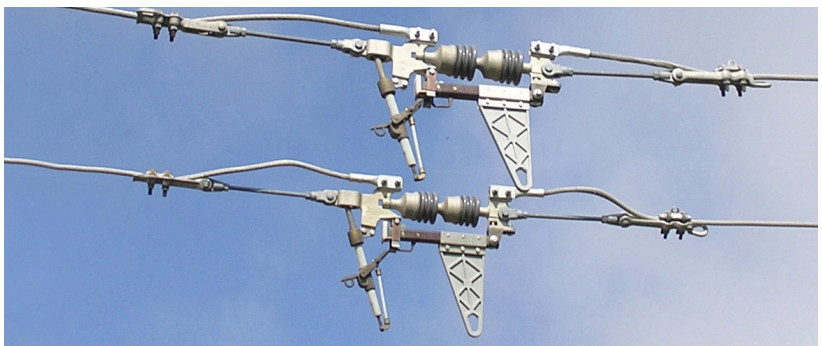
Pull the switch to open via the pull ring.



Pull the switch to close via the closer arm.



The closer arm option allows for installation of the switch farther away from the crossarm and is applicable to most type SE and type SEL switches.



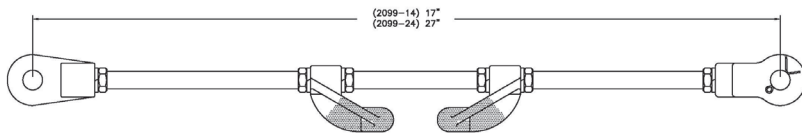
- Not compatible with switches having a 180° blade catch
- Add the letter "V" as a suffix to the catalog number (for example: 127PV)
- Retrofit kit available to retrofit existing type SE and type SEL switches.

Type SEL

line tension disconnect accessories

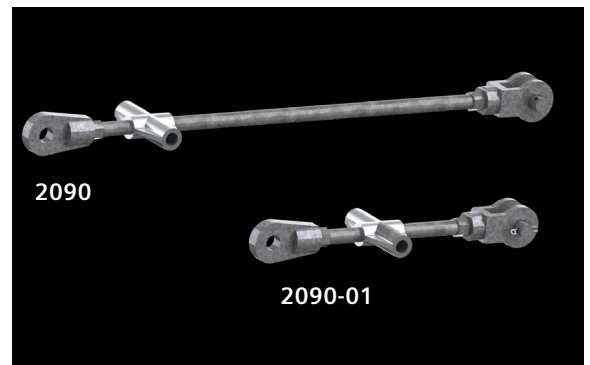
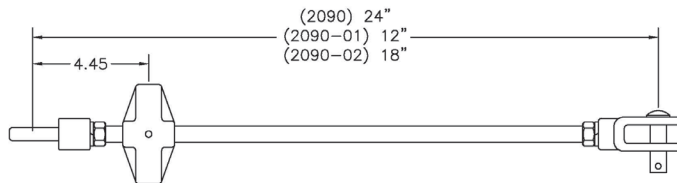
Stabilink clamping stabilizer:

- Mounts to any tie-top insulator
- Completely adjustable.



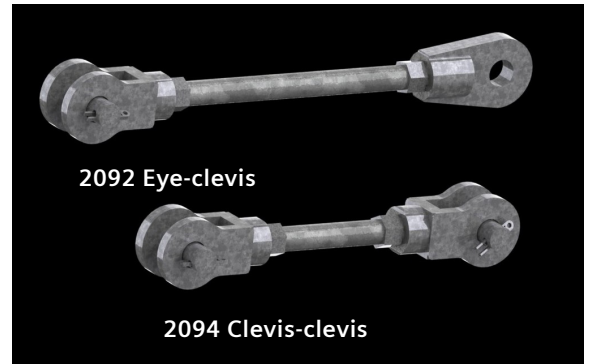
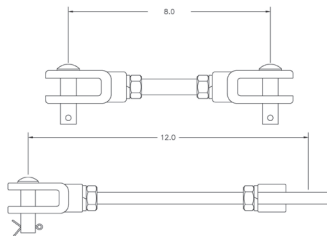
Trunnion links:

- End fittings may be rotated and re-tightened.



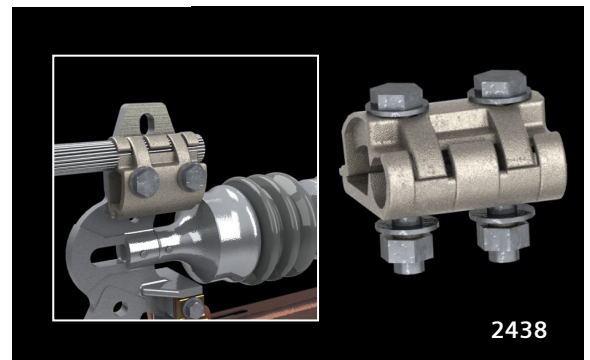
Extension links:

- End fittings may be rotated and re-tightened.



Cable connector:

- Hot tin-dipped red brass with stainless steel hardware
- Fits any 1.75" terminal
- Conductor ranges
 - #6 – 397.5 MCM ACSR
 - #4 – 500 MCM copper.



Type SEL

line tension disconnects

Type SEL part numbering table

	Position	1	2	3	4	5	6	7
Catalog #		■	■	■	P	O	O	O
Voltage, BIL, continuous and interrupting current								
25 kV, 150 kV BIL, 600 A		1	2	0				
38 kV, 200 kV BIL, 600 A		3	4	0				
25 kV, 150 kV BIL, 900 A		1	2	9				
38 kV, 200 kV BIL, 900 A		3	4	9				
Insulator								
Polymer insulators					P			
Options								
Quick break						Q	B	
Closer arm						V		
180° blade catch (not an option with closer arm)						C		
Catalog number example								
25 kV, 150 kV BIL, 600 A		1	2	0				
Polymer insulators					P			
Closer arm						V		
Final part number		1	2	0	P	V		

■ = Required O = Option code

Notes:

The root part number may have a "-##" suffix to indicate a particular design variant.

Add the letter "V" as a suffix to the catalog number (for example: 127PV) for closer arm.

Polymer insulators are standard on all SEL parts.

Type LER line tap disconnect

The type LER line tap disconnect is a rugged and reliable disconnect device that may be used either in tension or clamped onto the line for a wide array of cable-riser and crossover applications.

These switches feature a sturdy and well-ventilated square tubular copper blade and high-pressure silver contacts for superior current carrying characteristics.

In addition to a positive latch, all switches come with an exclusive opening mechanism to ease hookstick operation even after years in service.

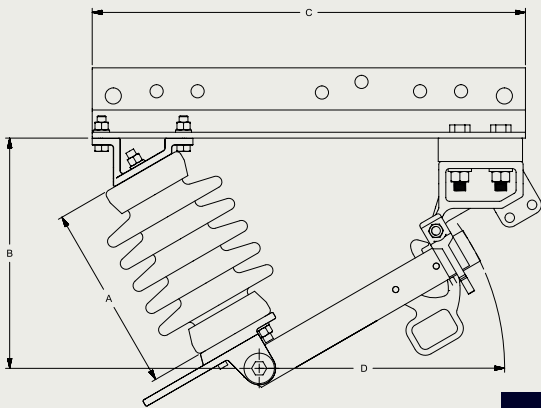
Many available options, accessories and mounting configurations make the type LER a flexible solution to any overhead line tap application where dependable operation in a lightweight package is required.



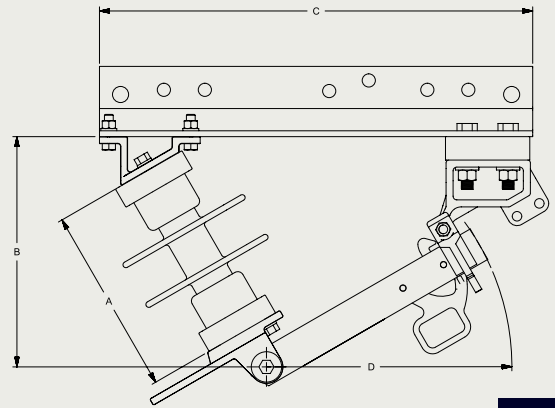
Type LER

with and without loadbreak hooks

For use with a loadbreak tool



264



264P

Type LER with loadbreak hooks

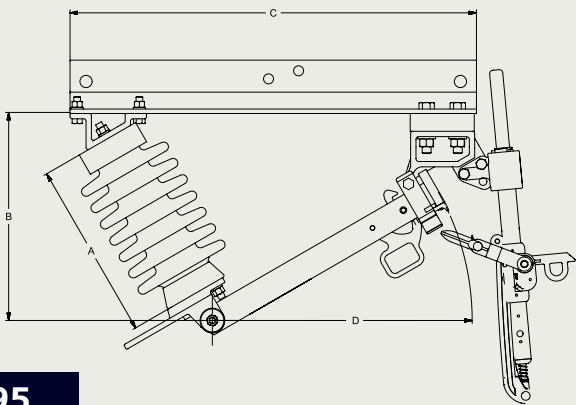
Amps	Catalog #	Max. kV	kV BIL	Dimensions - inches				Porcelain	Polymer
				A	B	C	D	Net weight (lbs.)	Net weight (lbs.)
600	264	15	110	8.0	9.9	18.5	10.5	19	19
600	364	25	150	10.0	11.6	25.0	14.8	21	17
600	464	38	150	10.0	11.6	25.0	14.8	21	20
900	294	15	110	8.0	9.9	18.5	10.5	21	18
900	394	25	150	10.0	11.6	25.0	14.8	23	18
900	494	38	150	10.0	11.6	25.0	14.8	23	19

Type LER without loadbreak hooks

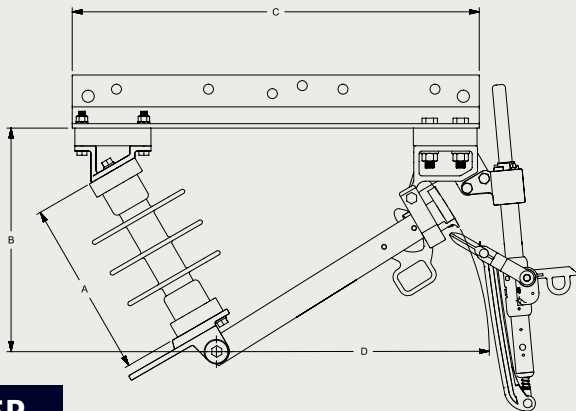
Amps	Catalog #	Max. kV	kV BIL	Dimensions - inches				Porcelain	Polymer
				A	B	C	D	Net weight (lbs.)	Net weight (lbs.)
600	267	15	110	8.0	9.9	18.5	10.5	19	14
600	367	25	150	10.0	11.6	25.0	14.8	21	14
600	467	38	150	10.0	11.6	25.0	14.8	21	14
900	297	15	110	8.0	9.9	18.5	10.5	21	17
900	397	25	150	10.0	11.6	25.0	14.8	23	17
900	497	38	150	10.0	11.6	25.0	14.8	23	17

Type LER with Saf-T-Gap interrupter

The type LER offers all the benefits of the standard type LER switches plus the same high quality Saf-T-Gap expulsion interrupter. The Saf-T-Gap interrupter changes in seconds with a standard shotgun-style hookstick.



395



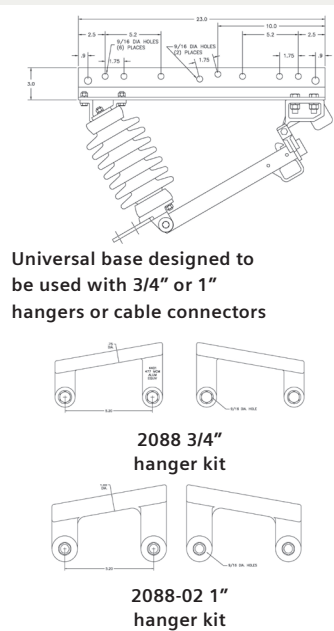
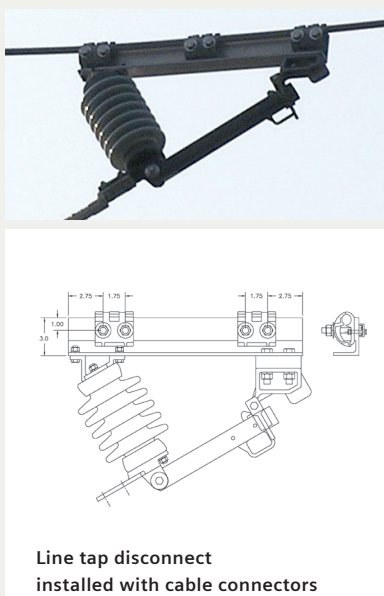
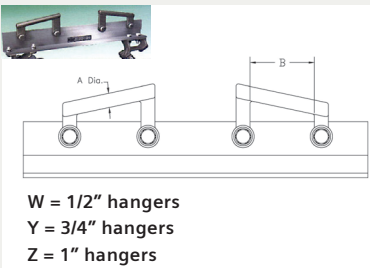
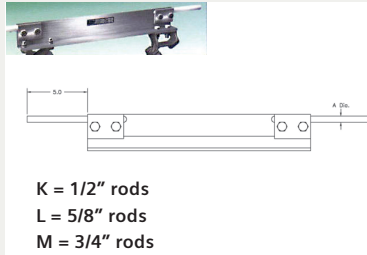
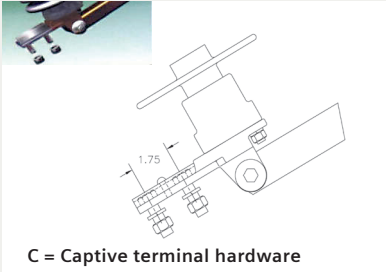
365P

Type LER with Saf-T-Gap interrupter

Amps	Catalog #	Max. kV	kV BIL	Dimensions - inches				Porcelain	Polymer
				A	B	C	D	Net weight (lbs.)	Net weight (lbs.)
600	265	15	110	8.0	9.9	18.5	11.1	23	20
600	365	25	150	10.0	11.6	23.0	15.3	25	22
900	295	15	110	8.0	9.9	18.5	11.1	24	21
900	395	25	150	10.0	11.6	23.0	15.3	26	22

Type LER

disconnect options and accessories



Type LER

line tap disconnect

Type LER part numbering table

	Position	1	2	3	4	5	6	7	8	
Catalog #		L	E	R	■	■	■	o	o	Option codes
Voltage and BIL										
15 kV, 110 kV BIL					2					
25 kV, 150 kV BIL					3					
38 kV, 200 kV BIL					4					
Continuous current capacity										
600 A						6				
900 A						9				
Load break provisions										
Load break hooks								4		
Saf-T-Gap interrupter								5		
None								7		
Options										
5/8" rods									L	
Polymer insulators									P	
3/4" hangers									Y	
1" hangers									Z	
Catalog number example										
25 kV, 150 kV BIL, 600 A					L	E	R	3	6	
Load break hooks									4	
Polymer insulators									P	
3/4" hangers										Y
Final part number		L	E	R	3	6	4	P	Y	

■ = Required o = Option code

Notes:

The root part number may have a "-##" suffix to indicate a particular design variant.



Type LER disconnect switches offer flexible solutions for overhead line tap applications where dependable operation in a lightweight package is required."

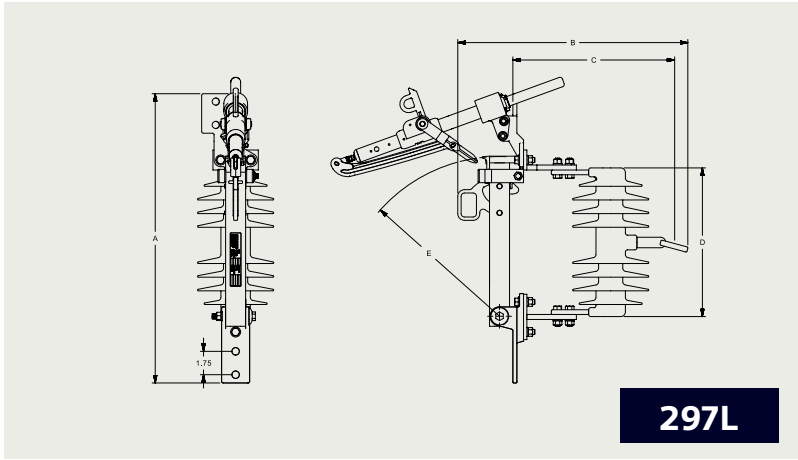


Type SER

single insulator disconnect

The type SER single insulator disconnect is a rugged and reliable disconnect where dependable operation in a lightweight package is required. These switches feature a sturdy and well-ventilated square tubular copper blade and high-pressure silver contacts for superior current carrying characteristics.

In addition to a positive latch, all switches come with an exclusive opening mechanism to ease hookstick operation, even after years of service. Many available options, accessories and mounting configurations make the type SER a flexible and low-cost switch solution.



*Shown with optional Saf-T-Gap load break interrupter

Type SER single insulator disconnect

				Dimensions - inches					Polymer
Amps	Catalog #	Max. kV	kV BIL	A	B	C	D	E	Net weight (lbs.)
600	267P	15	110	21.6	12.5	8.6	11.3	11.2	10
600	367P	25	150	25.3	14.4	10.5	14.8	15.3	18
600	467P	38	200	31.4	19.9	15.9	21.4	21.5	23
900	297P	15	110	21.6	12.5	8.6	11.3	11.5	11
900	397P	25	150	25.3	14.4	10.5	14.8	15.3	19
900	497P	38	200	31.4	21.0	15.9	21.4	21.5	24

Type SER

line tap disconnect



Type SER part numbering table

	Position	1	2	3	4	5	6	7	8	9
Catalog #	S	E	R	■	■	7	P	o	o	
Voltage and BIL										
15 kV, 110 kV BIL				2						
25 kV, 150 kV BIL				3						
38 kV, 200 kV BIL				4						
Continuous current capacity										
600 A					6					
900 A					9					
Insulator										
Polymer insulators							P			
Options										
Cable connectors									A	
Extended mounting bracket for crossarm mounting									B	1
Extended mounting bracket for crossarm mounting									B	2
Extended mounting bracket for crossarm mounting									B	3
Loadbreak hooks									H	
Plug-in Saf-T-Gap interrupter									L	
Quick break									Q	B
Hot line stud									S	
Catalog number example										
25 kV, 150 kV BIL				S	E	R	3	6	7	
Polymer insulator								P		
Quick break									Q	B
Final part number				S	E	R	3	6	7	P Q B

■ = Required

Note:

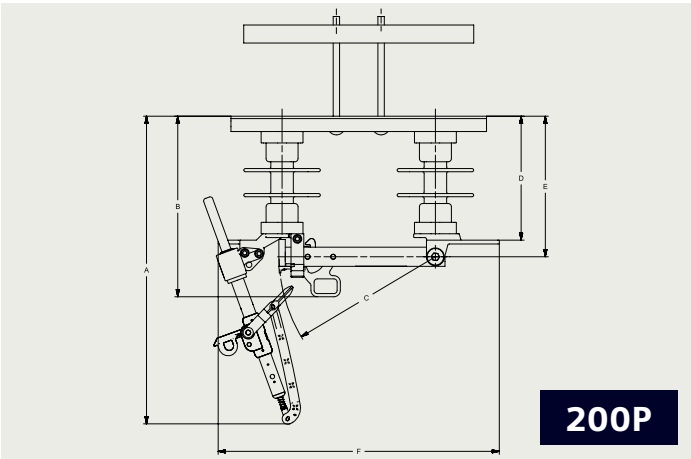
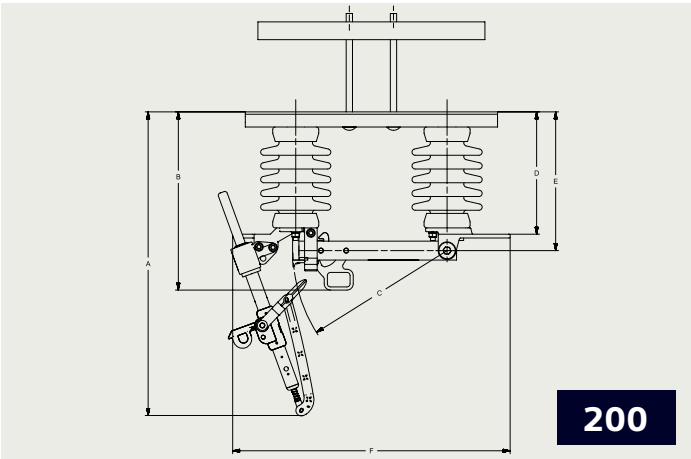
Polymer insulators are standard on all SER parts.

Type E distribution interrupter switch with Saf-T-Gap interrupter

The Saf-T-Gap interrupter changes in seconds with a standard shotgun-style hookstick

The type E interrupter switch is applicable on all circuits up to 600 amperes. Although a distribution class switch, the type E meets power class standards for the continuous current rating of 600 amperes. It is available in 15 kV and 25 kV ratings.

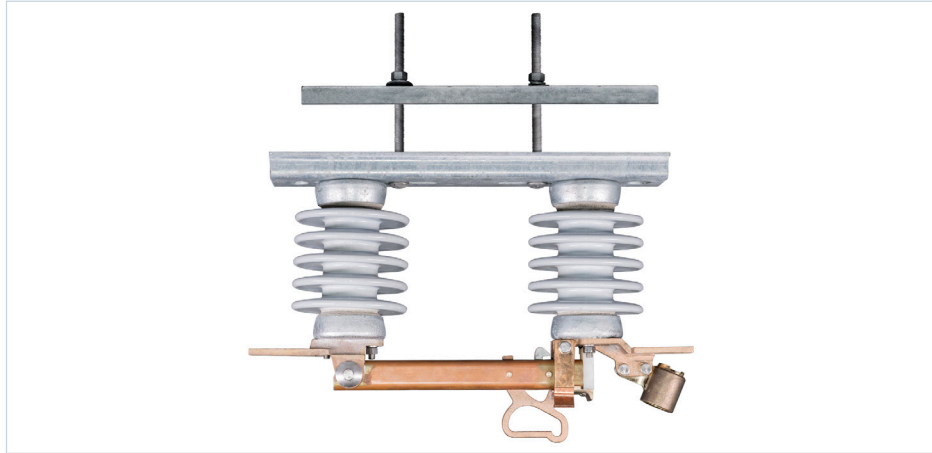
The Saf-T-Gap interrupter can be purchased as part of the original equipment or can be added later when live line switching may be required. It can be used for transformer magnetizing current, line charging current and loop switching, as well as emergency load dropping.



Type E distribution interrupter switch with Saf-T-Gap interrupter

Dimensions - inches										Porcelain	Polymer
Amps	Catalog #	Max. kV	kV BIL	A	B	C	D	E	F	Net weight (lbs.)	Net weight (lbs.)
600	200	15	110	23.5	13.2	12.3	9.7	11.0	22.0	43	39
600	300-01	25	150	25.5	15.2	15.3	11.7	13.0	25.0	49	43

Type E distribution interrupter switch with Saf-T-Gap interrupter



Type E part numbering table

	Position	1	2	3		4	5	
	Catalog #	■	■	■	-	O	O	Option codes
Voltage and BIL								
15 kV, 110 kV BIL, 600 A		2	0	0				
25 kV, 150 kV BIL, 600 A		3	0	0				
Options								
Quick break						Q	B	
Tinned terminals						T		
Backplate set						X		
Polymer insulators						P		
Cable connection						K		
Catalog number example								
15 kV, 110 kV BIL, 600 A		2	0	0	-			
Polymer insulators						P		
Tinned terminals							T	
Final part number		2	0	0	-	P	T	

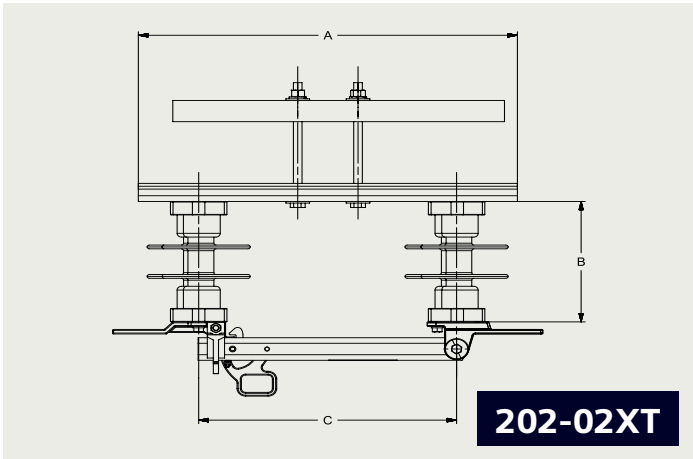
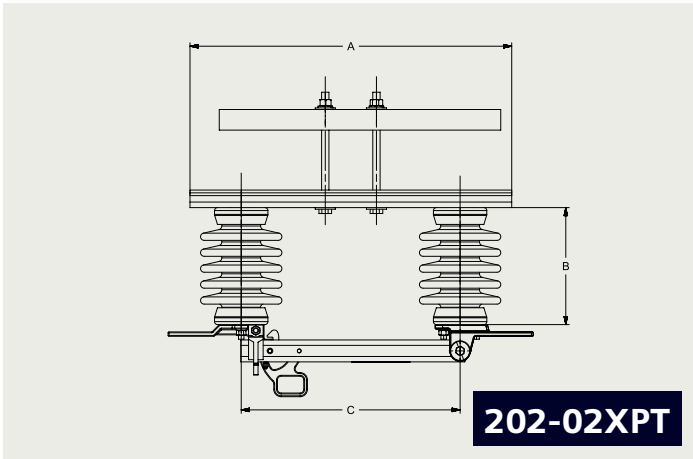
■ = Required O = Option code

Note:

The root part number may have a "-##" suffix to indicate a particular design variant.

Type EF distribution class disconnect with loadbreak hooks

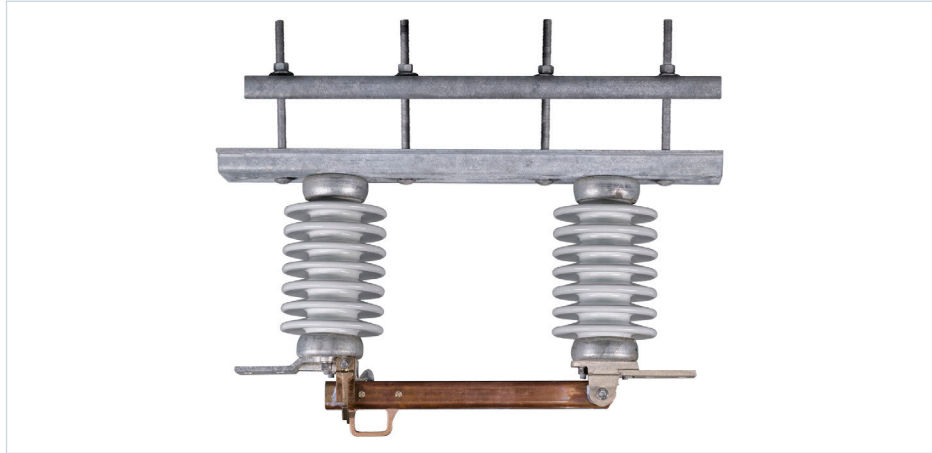
For use with a loadbreak tool



Type EF distribution class disconnect with loadbreak hooks

Amps	Catalog #	Max. kV	kV BIL	Dimensions - inches			Porcelain	Polymer
				A	B	C	Net weight (lbs.)	Net weight (lbs.)
600	202-02	15	110	22.0	8.0	15.0	37	34
900	202-03	15	110	22.0	8.0	15.0	38	35
600	302-02	25	150	22.0	10.0	15.0	39	37
900	302-03	25	150	22.0	10.0	15.0	40	37
600	402-02	38	150	27.5	10.0	15.0	39	40
900	402-03	38	150	27.5	10.0	15.0	40	35

Type EF distribution class disconnect with loadbreak hooks



Type EF part numbering table

	Position							
	1	2	3		4	5	6	7
Catalog #	■	■	■	-	■	■	O	O
Option codes								
Voltage and BIL								
15 kV, 110 kV BIL	2	0	2					
25 kV, 150 kV BIL	3	0	2					
38 kV, 150 kV BIL	4	0	2					
Continuous current capacity								
600 A					0	2		
900 A					0	3		
Options								
Quick break							Q	B
Tinned terminals							T	
Backplate set							X	
Double backplate set							X	X
Polymer insulators							P	
Cable connection							K	
Catalog number example								
15 kV, 110 kV BIL, 600 A	2	0	2	-	0	2		
Backplate set							X	
Polymer insulators								P
Tinned terminals								T
Final part number	2	0	2	-	0	2	X	P T

■ = Required O = Option code

Note:

The root part number may have a "-##" suffix to indicate a particular design variant.

Notes

[illegible]

Notes

This image shows a single sheet of white paper with horizontal blue or grey ruling lines. The lines are evenly spaced and run across the width of the page. There are no margins, text, or other markings on the paper.

Legal Manufacturer

Siemens Industry, Inc.
99 Bolton Sullivan Drive
Heber Springs, Arkansas 72543
United States of America
Telephone: +1 (800) 347-6659
usa.siemens.com/disconnectswitches
Order No. E50001-F630-A162-02-76US

This document contains a general description of available technical options only, and its effectiveness will be subject to specific variables including field conditions and project parameters. Siemens does not make representations, warranties, or assurances as to the accuracy or completeness of the content contained herein. Siemens reserves the right to modify the technology and product specifications in its sole discretion without advance notice.