


Installation Instructions

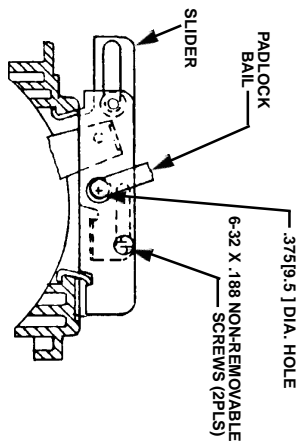
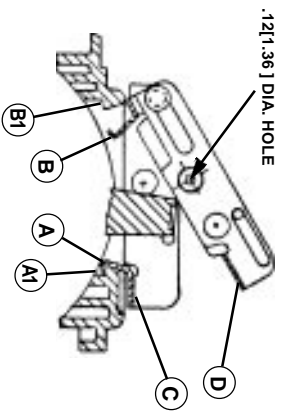
	<p>⚠ DANGER</p> <p>Hazardous Voltage Will cause death or severe injury. Turn power off supplying device before installing kit.</p>
---	--

⚠ SAFETY INSTRUCTIONS

NOTE: This instruction outlines the recommended installation procedure.

1. Turn power off supplying device before installing kit.
2. With breaker in tripped position, assemble padlocking device to breaker by positioning over handle as shown. Insert tab (A) into slot (A1). Pivot tab (B) into slot (B) until surface (D) is resting on surface (C).
3. Install 6-32 x .188 non-removable screws (2 pls). To padlock handle in "OFF" position move breaker handle to off and move slider to the left as shown above until .375[9.5] dia. holes line up padlock to be installed.

NOTE: To padlock circuit breaker in "ON" position, enlarge .12[1.36] dia. hole of slider to .375[9.5] dia. before assembly to breaker. File away burrs after drilling. Assemble padlocking device to breaker as explained above, then turn breaker "ON" and install padlock.



Dimensions
Inches
[Millimeters]