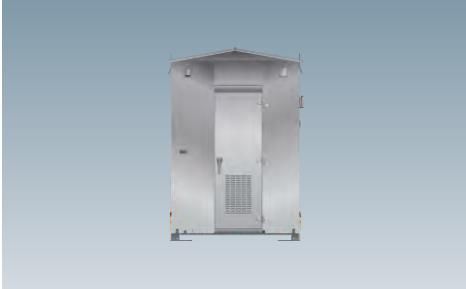


Instrument Housing Products



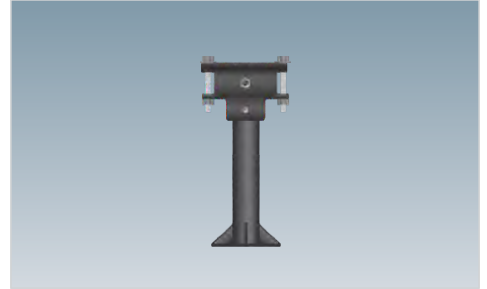
Instrument Houses

H1 - H2



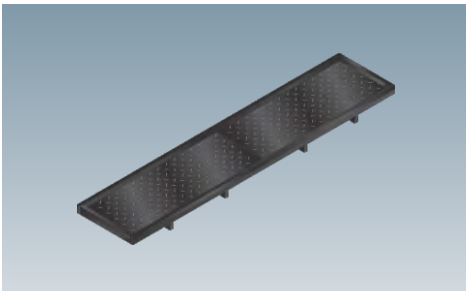
Instrument Cases

H3 - H4



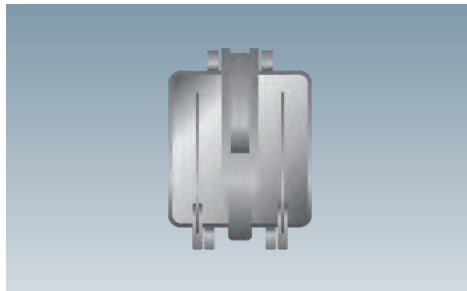
Pedestal Boxes

H5 - H10



Battery Trays and Racks

H11 - H14



Apparatus Boxes

H15 - H18



Relay Bars and Shelves

H19 - H22



Environmental Control Systems

H23 - H26





Instrument Houses

Overview



*Model A058400 Instrument House shown for reference purposes only!
Actual unit selected may vary in mounting and features.*

SIEMENS Instrument Houses are available in several sizes and configurations. Available in welded aluminum or steel shell construction with doors that can be completely removed or locked at 90° open position with included hooks and locking rods. Doors can be designed in a variety of arrangements.

Features

- Meets or exceeds applicable AREMA® specifications
- Available in multiple standard sizes from 4' (1.22m) x 4' (1.22m) to 8' (2.44m) x 8' (2.44m)
(other sizes may be available upon client request)
- Adjustable legs are for leveling of foundations
- Interior aerial outlet standard
- Interior ground terminal plate standard
- Interior light standard
- Exterior generator outlet standard
- Medium density fiberboard interior finished panels painted with fire retardant paint
- Ventilation louvers equipped with covers to reduce possible pests
- Steel shell variants are painted with primer and finish coated with aluminized paint
- Customizable interior configurations including wire chases, insulation, equipment racks / shelves and environmental control systems to host any client desired power and control components

SIEMENS Part Number	Dimensions			Material		Weight
	Width	Depth	Height	Aluminum	Steel	
4' x 4' Houses						
NYK:058400-44-XX	4 ft (1.22 m)	4 ft (1.22 m)	8 ft 7 5/8 in (2.63 m)	X	-	750.0 lbs (340.19 kgs)
NYK:051600-44-XX	4 ft (1.22 m)	4 ft (1.22 m)	8 ft 7 5/8 in (2.63 m)	-	X	920.0 lbs (417.31 kgs)
4' x 6' Houses						
NYK:058400-46-XX	4 ft (1.22 m)	6 ft (1.83 m)	8 ft 7 5/8 in (2.63 m)	X	-	950.0 lbs (430.91 kgs)
NYK:051600-46-XX	4 ft (1.22 m)	6 ft (1.83 m)	8 ft 7 5/8 in (2.63 m)	-	X	1,220.0 lbs (553.38 kgs)
6' x 6' Houses						
NYK:058400-66-XX	6 ft (1.83 m)	6 ft (1.83 m)	8 ft 9 3/4 in (2.69 m)	X	-	1,150.0 lbs (521.63 kgs)
NYK:051600-66-XX	6 ft (1.83 m)	6 ft (1.83 m)	8 ft 9 3/4 in (2.69 m)	-	X	2,020.0 lbs (916.26 kgs)
6' x 8' Houses						
NYK:058400-68-XX	6 ft (1.83 m)	8 ft (2.44 m)	8 ft 9 3/4 in (2.69 m)	X	-	1,350.0 lbs (612.35 kgs)
NYK:051600-68-XX	6 ft (1.83 m)	8 ft (2.44 m)	8 ft 9 3/4 in (2.69 m)	-	X	2,420.0 lbs (1,097.69 kgs)
8' x 8' Houses						
NYK:058400-88-XX	8 ft (2.44 m)	8 ft (2.44 m)	9 ft 10 in (2.99 m)	X	-	1,550.0 lbs (703.07 kgs)
NYK:051600-88-XX	8 ft (2.44 m)	8 ft (2.44 m)	9 ft 10 in (2.99 m)	-	X	2,820.0 lbs (1,279.13 kgs)



Instrument Cases

Overview



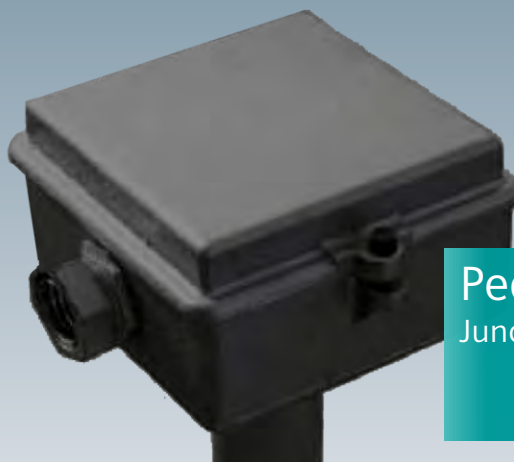
*Model A545210 Instrument Case shown for reference purposes only!
Actual unit selected may vary in mounting and features.*

SIEMENS Instrument Cases are available in several sizes and configurations. Available in welded aluminum or steel shell construction with doors that can be completely removed or locked at 90° open position with included hooks and locking rods. Doors can be designed in a variety of arrangements.

Features

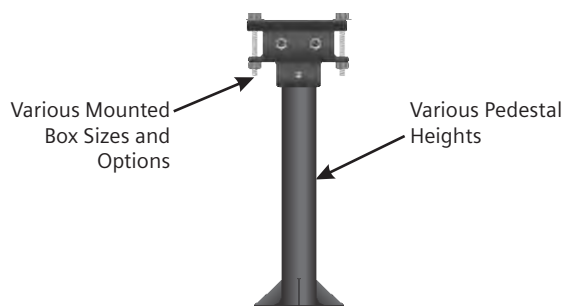
- Meets or exceeds applicable AREMA® specifications
- Available in multiple standard sizes from 41" (1.04 m) to 81" (5.08 m) wide
(other sizes may be available upon client request)
- Interior aerial outlet standard
- Interior ground terminal plate standard
- Interior light standard
- Exterior generator outlet standard
- Ventilation louvers equipped with covers to reduce possible pests
- Steel shell variants are painted with primer and finish coated with aluminized paint
- Customizable interior configurations including wire chases, insulation, equipment racks / shelves and environmental control systems to host any client desired power and control components

SIEMENS Part Number	Dimensions			Material		Weight
	Width	Depth	Height	Aluminum	Steel	
41" Wide Cases						
NYK:545210-410000	3 ft 5 in (1.04 m)	2 ft (0.61 m)	5 ft 1 3/4 in (1.57 m)	X	-	245.0 lbs (111.13 kgs)
NYK:567200-410000	3 ft 5 in (1.04 m)	2 ft (0.61 m)	5 ft 1 3/4 in (1.57 m)	-	X	380.0 lbs (172.37 kgs)
NYK:545110-410000	3 ft 5 in (1.04 m)	2 ft (0.61 m)	6 ft 2 3/4 in (1.90 m)	X	-	265.0 lbs (120.20 kgs)
NYK:567100-410000	3 ft 5 in (1.04 m)	2 ft (0.61 m)	6 ft 2 3/4 in (1.90 m)	-	X	410.0 lbs (185.97 kgs)
60" Wide Cases						
NYK:545210-600000	5 ft (1.52 m)	2 ft (0.61 m)	5 ft 1 3/4 in (1.57 m)	X	-	325.0 lbs (147.42 kgs)
NYK:567200-600000	5 ft (1.52 m)	2 ft (0.61 m)	5 ft 1 3/4 in (1.57 m)	-	X	460.0 lbs (208.65 kgs)
NYK:545110-600000	5 ft (1.52 m)	2 ft (0.61 m)	6 ft 2 3/4 in (1.90 m)	X	-	365.0 lbs (165.56 kgs)
NYK:567100-600000	5 ft (1.52 m)	2 ft (0.61 m)	6 ft 2 3/4 in (1.90 m)	-	X	490.0 lbs (222.26 kgs)
81" Wide Cases						
NYK:545210-810000	6 ft 9 in (2.06 m)	2 ft (0.61 m)	5 ft 1 3/4 in (1.57 m)	X	-	525.0 lbs (238.14 kgs)
NYK:567200-810000	6 ft 9 in (2.06 m)	2 ft (0.61 m)	5 ft 1 3/4 in (1.57 m)	-	X	560.0 lbs (254.01 kgs)
NYK:545110-810000	6 ft 9 in (2.06 m)	2 ft (0.61 m)	6 ft 2 3/4 in (1.90 m)	X	-	545.0 lbs (247.21 kgs)
NYK:567100-810000	6 ft 9 in (2.06 m)	2 ft (0.61 m)	6 ft 2 3/4 in (1.90 m)	-	X	620.0 lbs (281.23 kgs)



Pedestal Mounted Junction Boxes

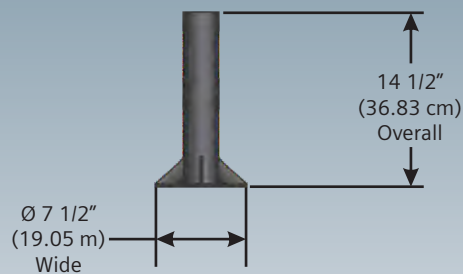
Overview



*Model A091463 Pedestal Mount Junction Box
shown for reference purposes only!
Actual unit selected may vary in mounting and features.*

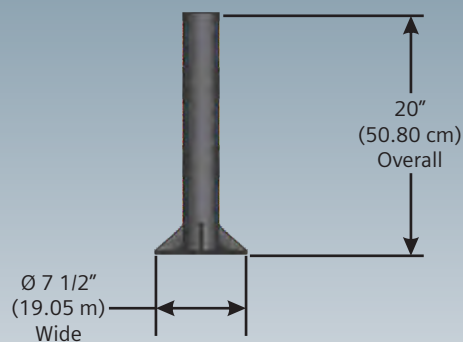
SIEMENS Pedestal Mounted box assemblies are available in several sizes and configurations. Cast iron box construction provides weathertight rugged protection against the elements while providing flexibility to place pedestal virtually anywhere.

NYK:093313-7



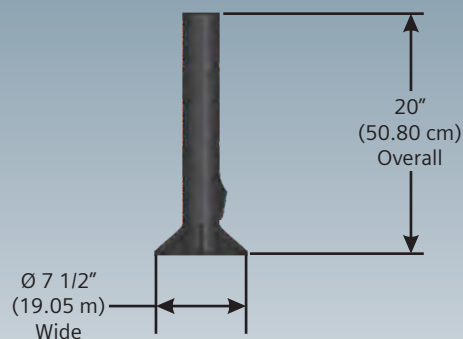
- Weight is approx. 26.0 lbs. (11.79 kgs.)
- Ø 2 7/8" (7.30 cm) pipe on Ø 7 1/2" (19.05 cm) base, 14 1/2" (36.83 cm) long

NYK:093463-11



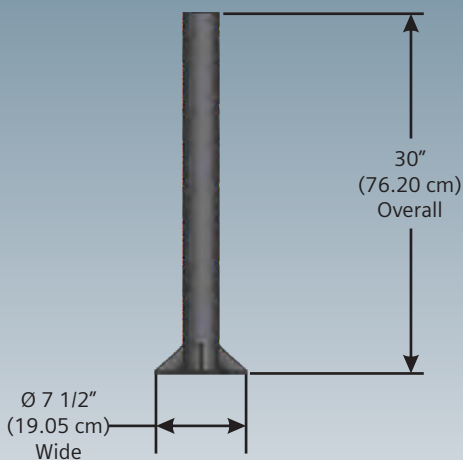
- Weight is approx. 36.0 lbs. (16.33 kgs.)
- Ø 2 7/8" (7.30 cm) pipe on Ø 7 1/2" (19.05 cm) base, 20" (50.80 cm) long

NYK:093463-89



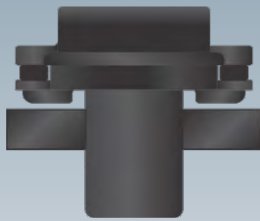
- Weight is approx. 38.0 lbs. (17.24 kgs.)
- Ø 2 7/8" (7.30 cm) pipe on Ø 7 1/2" (19.05 cm) base, 20" (50.80 cm) long
- Wire chase boot opening

NYK:093463-X3



- Weight is approx. 48.0 lbs. (16.33 kgs.)
- Ø 2 7/8" (7.30 cm) pipe on Ø 7 1/2" (19.05 cm) base, 30" (76.20 cm) long

NYK:091313-BX



- Weight is approx. 14.0 lbs. (6.35 kgs.)
- Ø 5 3/4" (14.61 cm) x 8" (20.32 cm) tall, Type 313 round terminal box design
- Integral base coupler to mount to Series One pedestals
- Neoprene gasket
- NO terminal blocks

NYK:091463-BX



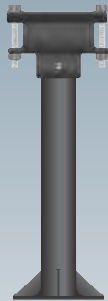
- Weight is approx. 14.0 lbs. (6.35 kgs.)
- 5 7/8" (14.92 cm) Wide x 4 1/2" (11.43 cm) Deep x 3" (7.62 cm) Tall Type 463 rectangular terminal box design (7" (17.78 cm) overall with mounting feet)
- Integral base coupler to mount to Series One pedestals
- Neoprene gasket
- NO terminal blocks

NYK:091626-BX



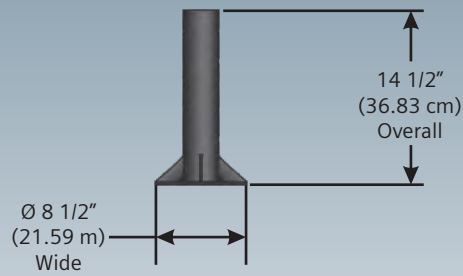
- Weight is approx. 16.0 lbs. (7.26 kgs.)
- 6 3/8" (16.19 cm) Wide x 5 5/8" (14.29 cm) Deep x 3 3/4" (9.53 cm) Tall Type 626 rectangular terminal box design (7" (17.78 cm) overall with mounting feet)
- (2) 007326 1/2" NPT cord grips
- Integral base coupler to mount to Series One pedestals
- Neoprene gasket
- NO terminal blocks

NYK:091463-224X



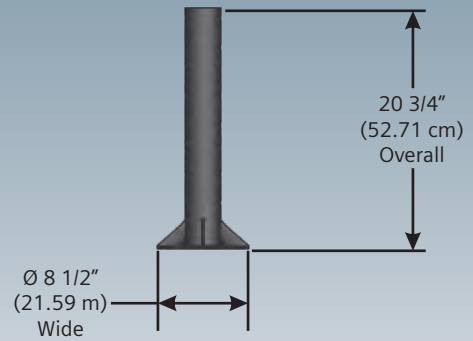
- Weight is approx. 50.0 lbs. (22.68 kgs.)
- (1) NYK:091463-BX terminal box assembly
- (1) NYK:093463-11 Series One pedestal
- (2) NYK:023274-23X terminal blocks

NYK:093374-4



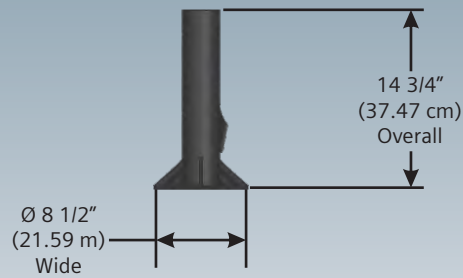
- Weight is approx. 26.0 lbs. (11.79 kgs.)
- $\text{Ø } 3 \frac{1}{2}"$ (8.89 cm) pipe on $\text{Ø } 8 \frac{1}{2}"$ (21.59 cm) base, $14 \frac{1}{2}"$ (36.83 cm) long

NYK:093374-26



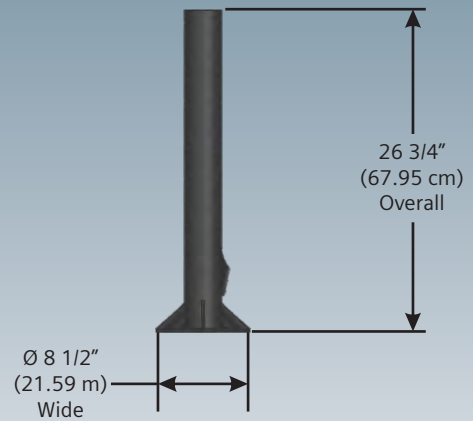
- Weight is approx. 26.0 lbs. (11.79 kgs.)
- $\text{Ø } 3 \frac{1}{2}"$ (8.89 cm) pipe on $\text{Ø } 8 \frac{1}{2}"$ (21.59 cm) base, $20 \frac{3}{4}"$ (52.71 cm) long

NYK:093374-28



- Weight is approx. 26.0 lbs. (11.79 kgs.)
- $\text{Ø } 3 \frac{1}{2}"$ (8.89 cm) pipe on $\text{Ø } 8 \frac{1}{2}"$ (21.59 cm) base, $14 \frac{3}{4}"$ (37.47 cm) long
- Wire chase boot opening

NYK:093374-27



- Weight is approx. 26.0 lbs. (11.79 kgs.)
- $\text{Ø } 3 \frac{1}{2}"$ (8.89 cm) pipe on $\text{Ø } 8 \frac{1}{2}"$ (21.59 cm) base, $26 \frac{3}{4}"$ (67.95 cm) long
- Wire chase boot opening

NYK:091428-CBX



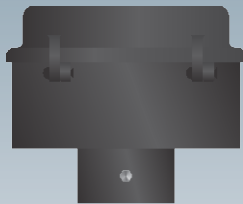
- Weight is approx. 26.0 lbs. (11.79 kgs.) including hardware
- 10" (25.4 cm) Wide x 7" (17.78 cm) Deep x 4 1/2" (2.04 cm) Tall Type 428 rectangular terminal box design (12" 3/4 (32.39 cm) Wide x 7 3/4" (19.69 cm) Deep x 13" (33.02 cm) Tall overall with hardware and integral base coupler)
- Integral base coupler to mount to Series Four pedestals
- Neoprene gasket
- NO terminal blocks

NYK:091428-223BX



- Weight is approx. 26.0 lbs. (11.79 kgs.) including hardware
- 10" (25.4 cm) Wide x 7" (17.78 cm) Deep x 4 1/2" (2.04 cm) Tall Type 428 rectangular terminal box design (12" 3/4 (32.39 cm) Wide x 7 3/4" (19.69 cm) Deep x 13" (33.02 cm) Tall overall with hardware and integral base coupler)
- (1) 1 1/2"-11 1/2 NPT threaded hole for fittings
- Integral base coupler to mount to Series Four pedestals
- Neoprene gasket
- NO terminal blocks

NYK:091428-1ABX

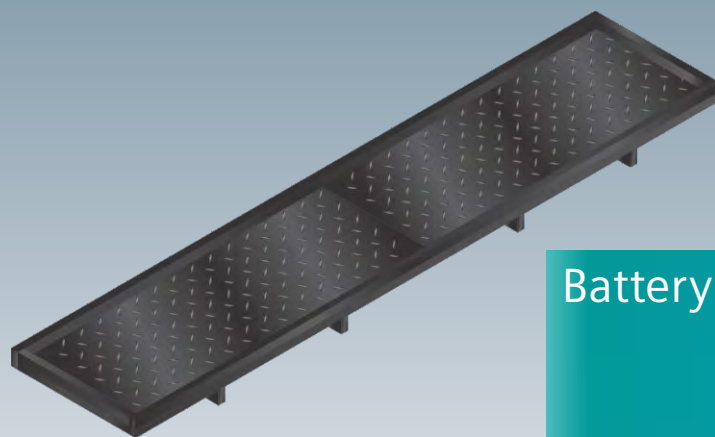


- Weight is approx. 34.0 lbs. (15.88 kgs.)
- 10" (25.4 cm) Wide x 7" (17.78 cm) Deep x 4 1/2" (2.04 cm) Tall Type 428 rectangular terminal box design (11" (27.94 cm) Wide x 10 3/16" (25.88 cm) Deep x 9" (22.86 cm) Tall overall with turn clasp, hinges and integral base coupler)
- Integral base coupler to mount to Series Four pedestals
- Neoprene gasket
- NO terminal blocks

NYK:091608-BX

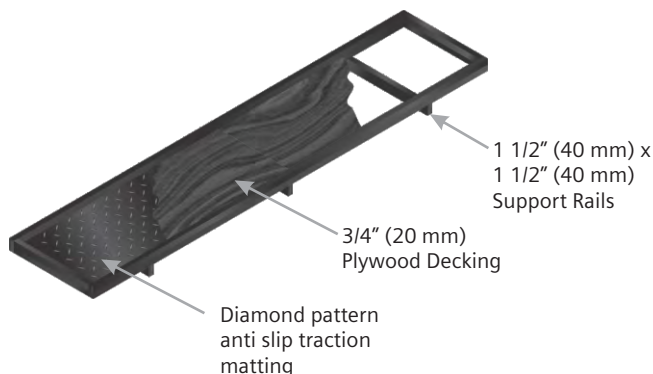


- Weight is approx. 28.0 lbs. (12.70 kgs.) including hardware
- 10" (25.4 cm) Wide x 10" (25.4 cm) Deep x 4 1/2" (2.04 cm) Tall Type 428 rectangular terminal box design (12" 3/4 (32.39 cm) Wide x 10 3/4" (27.31 cm) Deep x 13" (33.02 cm) Tall overall with hardware and integral base coupler)
- Integral base coupler to mount to Series Four pedestals
- Neoprene gasket
- NO terminal blocks



Battery Trays and Racks

Overview



*Model A058400 Instrument House shown for reference purposes only!
Actual unit selected may vary in mounting and features.*

SIEMENS Battery Trays are constructed for superior stability and rugged use. Made of plywood to prevent possible battery charge leakage. Then all joints are sealed with waterproof silicon beading in case of any type of spill or leakage inside the tray. Next they are coated with one of numerous specified finishes to prevent damage. Finally a diamond pattern tread anti slip traction matting is installed.

Features

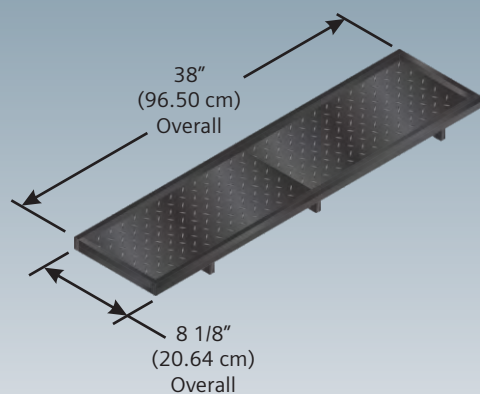
- Available in multiple lengths
- 3/4" Plywood decking and sides
- 1 1/2" (40 mm) x 1 1/2" (40 mm) (*nominal*) support rails
- Red oxide primer standard
- Silicon sealed waterproofed joints
- Various interior finishes available

Standard options

- Gray, white and black color
- Fire retardant latex, black acid resistance or water based enamel coating

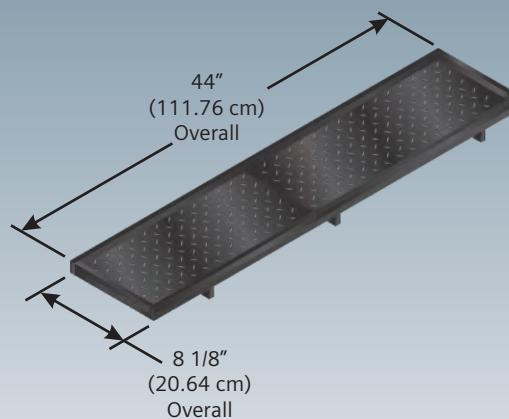
- Diamond pattern tread anti slip traction matting

NYK:170999-2



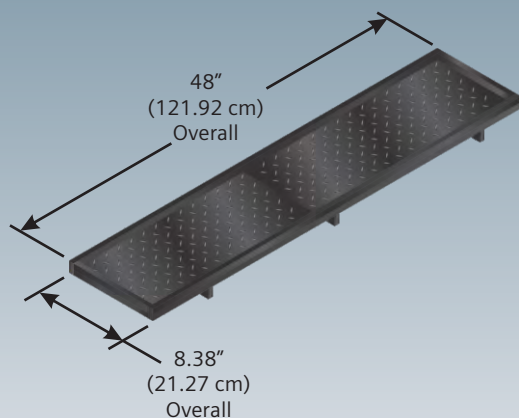
- Weight is approx. 8 lbs. (3.63 kgs.)
- 38" (96.50 cm) Wide x 8 1/8" (20.64 cm) Deep x 2 1/2" (6.35 cm) Tall
- 3/4" Plywood flooring
- Red oxide primer and black acid resistant finish
- (3) Support rails

NYK:170999-1



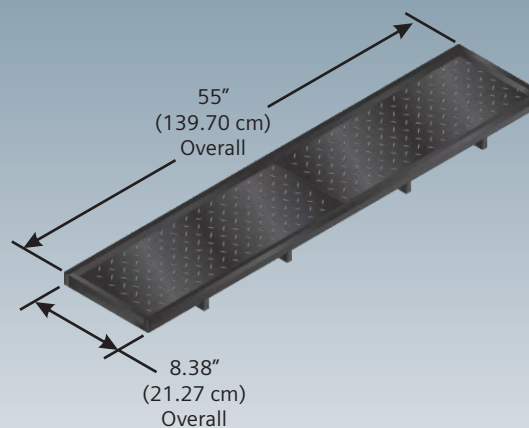
- Weight is approx. 10 lbs. (4.54 kgs.)
- 44" (111.76 cm) Wide x 8 1/8" (20.64 cm) Deep x 2 1/2" (6.35 cm) Tall
- 3/4" Plywood flooring
- Red oxide primer and black acid resistant finish
- (3) Support rails

NYK:170999-3



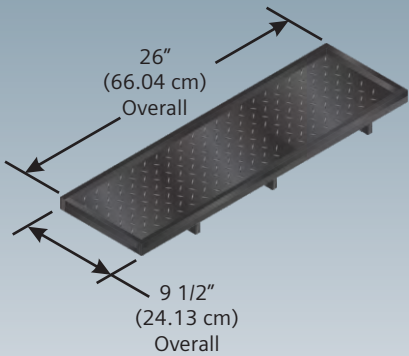
- Weight is approx. 12 lbs. (5.44 kgs.) including hardware
- 48" (121.92 cm) Wide x 8 3/8" (21.27 cm) Deep x 2 1/2" (6.35 cm) Tall
- 3/4" Plywood flooring
- Red oxide primer and black acid resistant finish
(Other finishes available upon request)
- Diamond pattern tread anti slip traction matting
- (3) Support rails

NYK:170999-4



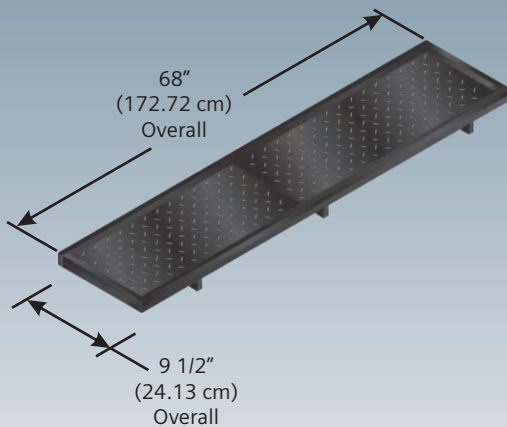
- Weight is approx. 16 lbs. (7.26 kgs.) including hardware
- 55" (139.70 cm) Wide x 8 3/8" (21.27 cm) Deep x 2 1/2" (6.35 cm) Tall
- 3/4" Plywood flooring
- Red oxide primer and black acid resistant finish
(Other finishes available upon request)
- Diamond pattern tread anti slip traction matting
- (3) Support rails

NYK:170999-7



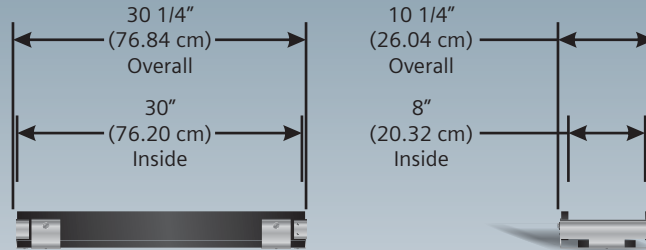
- Weight is approx. 6 lbs. (2.72 kgs.) including hardware
- 26" (66.04 cm) Wide x 9 1/2" (24.13 cm) Deep x 2 1/2" (6.35 cm) Tall
- 3/4" Plywood flooring
- Red oxide primer and black acid resistant finish (Other finishes available upon request)
- Diamond pattern tread anti slip traction matting
- (3) Support rails

NYK:170999-6



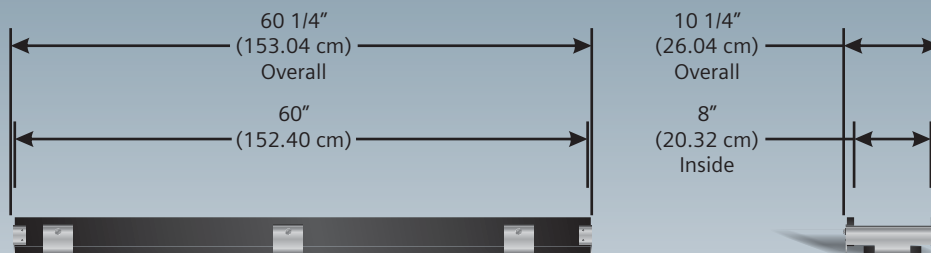
- Weight is approx. 24 lbs. (10.89 kgs.) including hardware
- 68" (172.72 cm) Wide x 9 1/2" (24.13 cm) Deep x 2 1/2" (6.35 cm) Tall
- 3/4" Plywood flooring
- Red oxide primer and black acid resistant finish (Other finishes available upon request)
- Diamond pattern tread anti slip traction matting
- (4) Support rails

NYK:051639-78X



- Weight is approx. 6 lbs. (2.72 kgs.) including hardware
- 30 1/4" (76.84 cm) Wide x 10 1/4" (26.04 cm) Deep x 3 15/16" (10.02 cm) Tall
- 3/4" Plywood flooring
- Red oxide primer and black acid resistant finish
- Aluminum support bracing
- (1) Tier

NYK:051640-52X1



- Weight is approx. 10 lbs. (4.54 kgs.) including hardware
- 60 1/4" (153.04 cm) Wide x 10 1/4" (26.04 cm) Deep x 3 15/16" (10.02 cm) Tall
- 3/4" Plywood flooring
- Red oxide primer and black acid resistant finish
- Aluminum support bracing
- (1) Tier



Overview



*Model A151504 Apparatus Box shown for reference purposes only!
Actual unit selected may vary in mounting and features.*

SIEMENS Apparatus Boxes assemblies are available in several sizes and configurations. Cast iron or aluminum box construction provides weathertight rugged protection against the elements while providing flexibility to place virtually anywhere.

The careful machining of these castings assures proper alignment of covers to housings. Gaskets are located between the cover and box to provide a weathertight seal.

Available for use with these boxes are a variety of connectors, adapter plates, outlets, and ventilators.

Equipment to be used in these boxes, such as terminals, arresters, resistors, etc., may be found in their appropriate sections of this catalog. Terminal boards of 3/4 inch wood, mounted in bottom of box, can be supplied for mounting of equipment.

NYK:151504-201A



**Apparatus Box 5" (12.70 cm) X 6" (15.24 cm)
(Empty)**

- Weight is approx. 10.6 lbs. (4.81 kgs.)
- (1) NYK:151504-201A apparatus box
- (1) NYK:132136-T11672 3 position switch

NYK:151504-201X



**Apparatus Box 5" (12.70 cm) X 6" (15.24 cm)
(Empty w/ Pushbutton)**

- Weight is approx. 11.9 lbs. (5.40 kgs.)
- (1) NYK:151504-201A apparatus box
- (1) NYK:025100-X100 start pushbutton

NYK:151504-204X



**Apparatus Box 5" (12.70 cm) X 6" (15.24 cm)
(Empty w/ Pushbutton and 2 Position Lever Switch)**


- Weight is approx. 12.6 lbs. (5.72 kgs.)
- (1) NYK:151504-201A apparatus box
- (1) NYK:025100-X101, 2 position lever switch
- (1) NYK:026160-37 black pushbutton
- (1) NYK:026160-38 red pushbutton

NYK:151504-X258



**Apparatus Box 5" (12.70 cm) X 6" (15.24 cm)
(Empty w/ Pushbutton and 2 Position Signal Switch)**

- Weight is approx. 12.4 lbs. (5.62 kgs.)
- (1) NYK:151504-201A apparatus box
- (1) NYK:132136-T11672 3 position switch

NYK:151504-X261		NYK:151504-X260	
			
<p>Apparatus Box 5" (12.70 cm) X 6" (15.24 cm) (Empty w/ 3 Position Key Switch)</p> <ul style="list-style-type: none">• Weight is approx. 12.4 lbs. (5.62 kgs.)• (1) NYK:151504-201A apparatus box• (1) NYK:151525-X29, 3 way key switch		<p>5.00" (12.70 cm) X 6" (15.24 cm) Apparatus Box with 2 Way Key Switch</p> <ul style="list-style-type: none">• Weight is approx. 12.4 lbs. (5.62 kgs.)• (1) NYK:151504-201A apparatus box• (1) NYK:151525-X30, 2 way key switch	



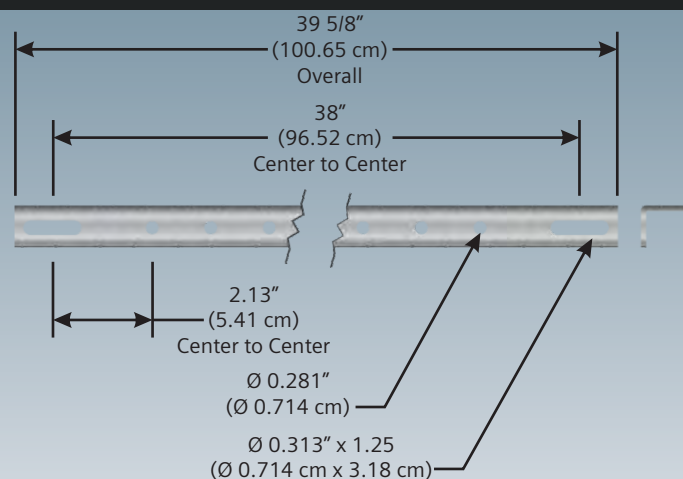
Overview



*Model A560024 Relay Bars shown for reference purposes only!
Actual unit selected may vary in mounting and features.*

SIEMENS Relay Bars and Shelves are constructed out of steel strips and allow for mounting of relays or components virtually anywhere in any instrument house or case.

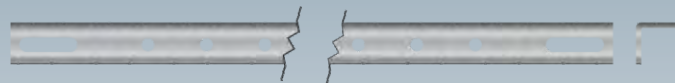
NYK:560024-1



Relay bar for 41" (1.04 m) Wide Cases

- Weight is approx. 4 lbs. (1.81 kgs.)
- 7/8" x 1" formed steel angle
- Gray enamel finish

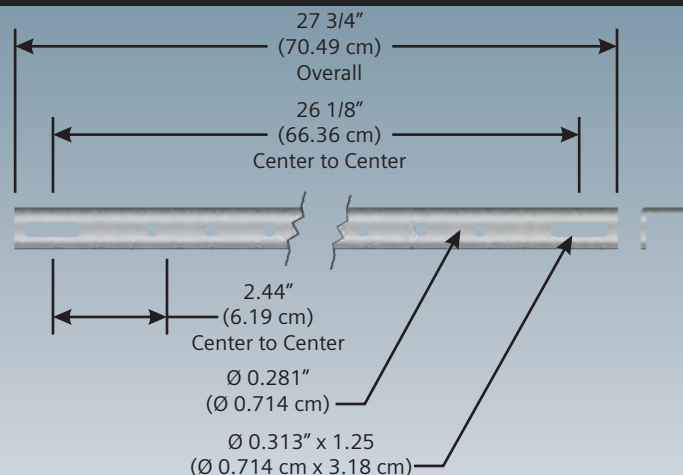
NYK:560024-1X



Relay bar for 41" (1.04 m) Wide Cases w/ Hardware

- Weight is approx. 6 lbs. (2.72 kgs.)
- (1) NYK:0560024-1
- Includes hardware (not shown)

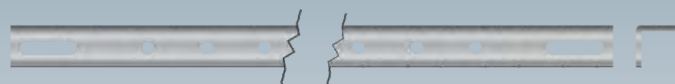
NYK:560024-2



Relay bar for 60" (1.52 m) Wide Cases

- Weight is approx. 3 lbs. (1.36 kgs.)
- 7/8" x 1" formed steel angle
- Gray enamel finish

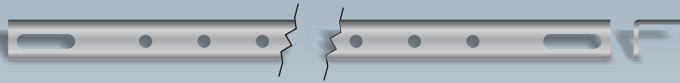
NYK:560024-2X



Relay bar for 60" (1.52 m) Wide Cases w/ Hardware

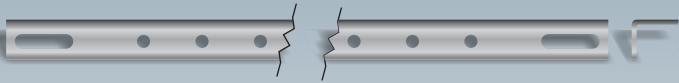
- Weight is approx. 5 lbs. (2.27 kgs.)
- (1) NYK:0560024-2
- Includes hardware (not shown)

NYK:560024-3X



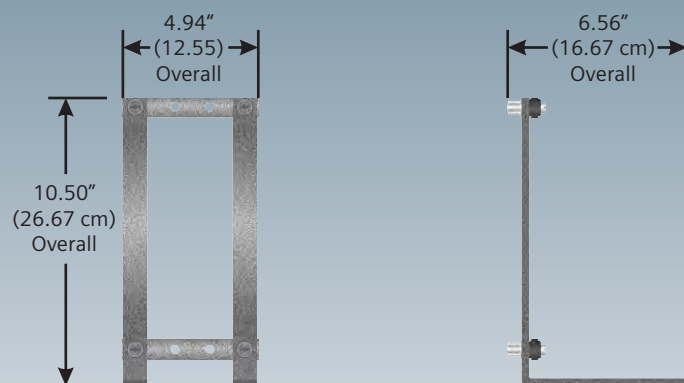
- Relay bar for 41" (1.04 m) Wide Cases w/ Hardware**
- Weight is approx. 6 lbs. (2.72 kgs.)
 - (1) NYK:0560024-1
 - Includes hardware

NYK:560024-4X



- Relay bar for 60" (1.52 m) Wide Cases w/ Hardware**
- Weight is approx. 5 lbs. (2.27 kgs.)
 - (1) NYK:0560024-2
 - Includes hardware

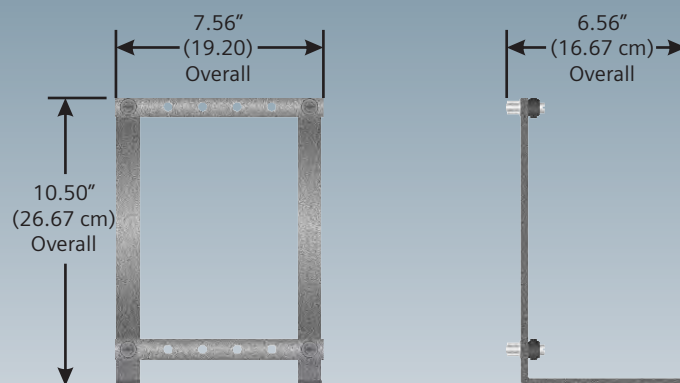
NYK:420000-54X



Relay Shelf, (1) ST-1 Relay

- Weight is approx. 2.2 lbs. (1.00 kgs.)
- Includes hardware

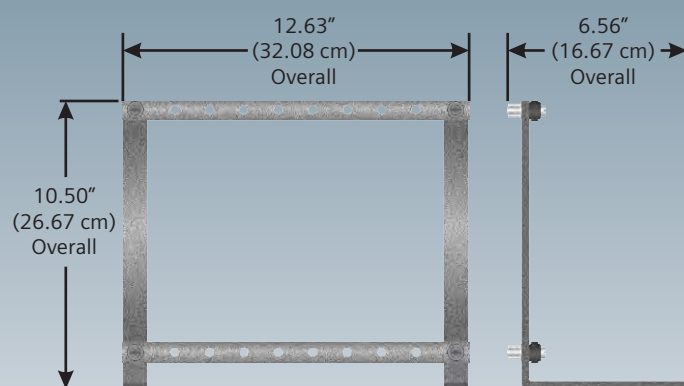
NYK:420000-55X



Relay Shelf, (2) ST-1 Relay

- Weight is approx. 3.0 lbs. (1.36 kgs.)
- Includes hardware

NYK:420000-56X



Relay Shelf, (4) ST-1 Relay

- Weight is approx. 5.2 lbs. (2.36 kgs.)
- Includes hardware



Environmental Control Systems

Overview



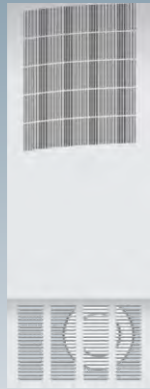
Various Environmental Control System components shown for reference purposes only! Actual unit selected may vary in mounting and features.

SIEMENS has a full line of heating, air conditioning and ventilation systems for virtually any instrument house design.

Air Conditioning Systems for instrument houses are of high quality, featuring high BTU output with minimum operating costs. A change-over thermostat is used, to insure proper transfer from air conditioning to heating and vice versa. A weather hood of steel or aluminum, depending on the type of house, is provided to protect the air conditioner and insure longer life of the unit.

Heating systems feature protected and efficient cast aluminum heating grids and directional louvered cover for circulation of warm air and even distribution.

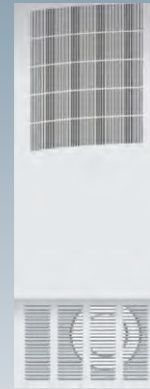
NYK:051894-281



Air Conditioner 230V, 6,000 BTU/HR

- Weight is approx. 125.00 lbs. (56.70 kgs.)

NYK:051894-282



Air Conditioner 230V, 19,000 BTU/HR

- Weight is approx. 197.00 lbs. (89.36 kgs.)

NYK:051620-38X



Heater 240V, 1,500W, w/ fan and frame

- Weight is approx. 8 lbs. (3.63 kgs.)
- 10.00" (25.4 cm) X 12.50" (31.75 cm) X 4.16" (10.57 cm)

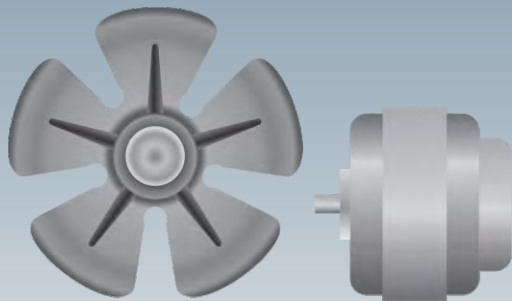
NYK:051620-X



Heater 240V, 4,000W, w/ fan and frame

- Weight is approx. 8 lbs. (3.63 kgs.)
- 10.00" (25.4 cm) X 12.50" (31.75 cm) X 4.16" (10.57 cm)

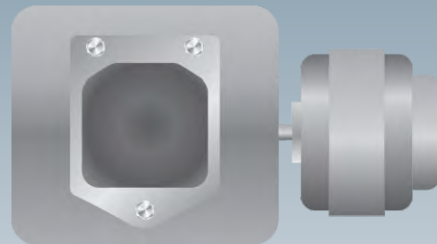
NYK:051894-35AX



Ventilation Fan

- Weight is approx. 4.4 lbs. (2.00 kgs.)
- 7" motor and fan assembly

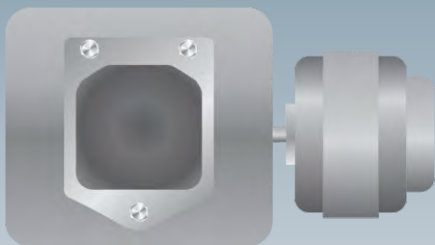
NYK:035035-7X



Ventilation Fan 110 VAC, w/ Aerial Inlet




- Weight is approx. 7.5 lbs. (19.05 kgs.)
- (1) 035035-500 aerial outlet

NYK:035035-503X



Ventilation Fan 220 VAC, w/ Aerial Inlet

- Weight is approx. 7.5 lbs. (19.05 kgs.)
- (1) 035035-500 aerial outlet

NYK:050971-26X		NYK:035908-1X	
			
<p>Cable Riser 36" (91.44 cm)</p> <ul style="list-style-type: none">• Weight is approx. 6.7 lbs. (17.02 kgs.)		<p>Cable Riser 18" (45.72 cm) w/ Foot Mount</p> <ul style="list-style-type: none">• Weight is approx. 11.4 lbs. (28.96 kgs.)	
NYK:050971-X		Optional Accessories	
		SIEMENS Part Number	Description
		NYK:035035-X	Aerial cable inlet
		NYK:051151-1	Cable support
		NYK:051128-AX	Door handle
		NYK:035049-X	Ground terminal
		NYK:051154-500X	Lamp socket
<p>Cable Riser 24" (60.96 cm) w/ Foot Mount</p> <ul style="list-style-type: none">• Weight is approx. 4.3 lbs. (10.92 kgs.)			