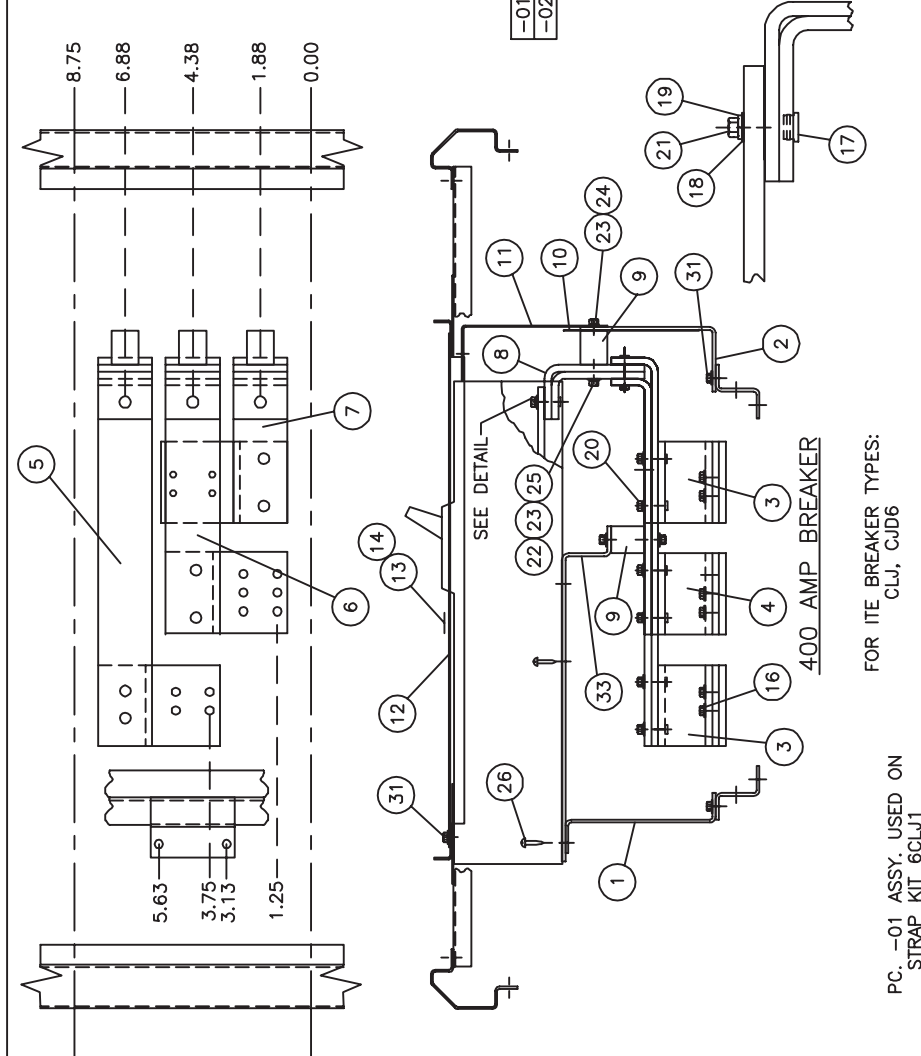


Third Angle Proj. Rev 10 12-5719 1 Sht

Autocad Filename



PC. -01 ASSY. USED ON STRAP KIT 6CLJ1
 PC. -02 ASSY. USED ON STRAP KIT SCJD

FOR ITE BREAKER TYPES:
 CLJ, CJD6

⚠ DANGER
 Hazardous voltage. Will cause death or serious injury.
 Keep out. Personnel only. Qualified personnel only. Disconnect and lock off all equipment before working on this equipment.

TORQUE VALUES:
 (16)-72 IN./LBS.
 (29)-20 FT./LBS.
 (20)(21)-12 FT./LBS.

-02	-01	ITEM	PC. NO.	DESCRIPTION
1	1	1	16-6114-01	MOUNTING BRACKET
1	1	2	16-6120-02	SUPPORT BRACKET
2	2	3	17-6788-02	ØAC JITNEY
1	1	4	17-6769-02	ØB JITNEY
1	1	5	12-6776-06	ØAC LONG CONNECTOR
1	1	6	12-6776-05	ØB CONNECTOR
1	1	7	12-6776-04	ØAC SHORT CONNECTOR
3	3	8	17-6770-02	PAD CONNECTOR
4	4	9	11-1800-02	1-1/4" INSULATOR
1	1	10	11-7721-01	BARRIER
1	1	11	11-6415-02	BARRIER
1	1	12	12-6194-02	COVER PLATE
1	1	13	11-7505-01	CIRCUIT I.D. CARD
1	1	14	11-7506-01	CARD HOLDER
15				
2	2	16	11-B-2022-05	STRAP-BUS HARDWARE KIT
12	12	17	11-1620-04	5/12-18 INSERT
12	12	18	11-1615-06	5/16" FLAT WASHER
12	12	19	11-1618-04	5/16" LOCK WASHER
6	6	20	11-1566-05	5/16-18 X 1" HHMS
6	6	21	11-1566-07	5/16-16 X 1-1/4" HHMS
6	6	22	11-1615-04	1/4" FLAT WASHER
8	8	23	11-1618-03	1/4" LOCK WASHER
4	4	24	11-1546-02	1/4-20 X 1/2" HHMS
4	4	25	11-1546-05	1/4-20 X 7/8" HHMS
4	4	26	11-1542-14	1/4-20 X 2-3/4" SRHMS
-	1	27	12-B-2105-04	NEUTRAL LUG ASSEMBLY
1	-	28	12-B-2105-06	NEUTRAL LUG ASSEMBLY
29				
30				
6	6	31	11-1553-02	1/4-20 X 3/8" SHHWS
1	1	32	12-5531-11	FILLER PLATE ASSEMBLY
1	1	33	16-6115-01	AUXILIARY MOUNTING BRACKET
1	-	34	31-1225-01	INSTRUCTION SHEET
1	1	35	15-A-1027-01	CARTON LABEL
1	1	36	48001057 ▲	CARTON
-	1	37	11-5570-02	SERIES 5 CONVERSION KIT
-	1	38	31-1187-01	INSTRUCTION SHEET
39				
40				

Unless otherwise specified dimensions are in inches and are as follows unless specified otherwise.
 .XX ±.050
 .XXX ±.015
 Angular ± 2'
 Do not scale drawing

Dwn TWT Date 3-30-87
 Chk JRM Date 9-5-91
 Apvd SH Date 9-13-91

Date	C.N.	Rev
84-001	3-30-87	0
84-071		1
84-093	7-15-88	2
1A-066	2-16-89	3
1A-077	6-08-89	4
1A-280	11-30-90	5
1A-939	7-22-91	6
1B-359	11-11-92	7
1B-908	5-8-95	8
1C-831A	04-12-04	9
1C-831B	7-31-06	10

Confidential - Property of
Siemens Industry, Inc.
 Building Technologies Division

CJD FRAME MOUNT
 SERIES 6 - BRANCH

Dwg No. 12-5719 Rev. 10
 Scale NONE Sheet 1 of 1

FOR USE WITH CJD6 FRAME BREAKERS MOUNTED IN SPP/FPP/S5/F2/P5 PANELBOARDS (DEEP BOX).