

CATALOG NUMBER: LG0202B1200JL6

FEATURES AND RATINGS

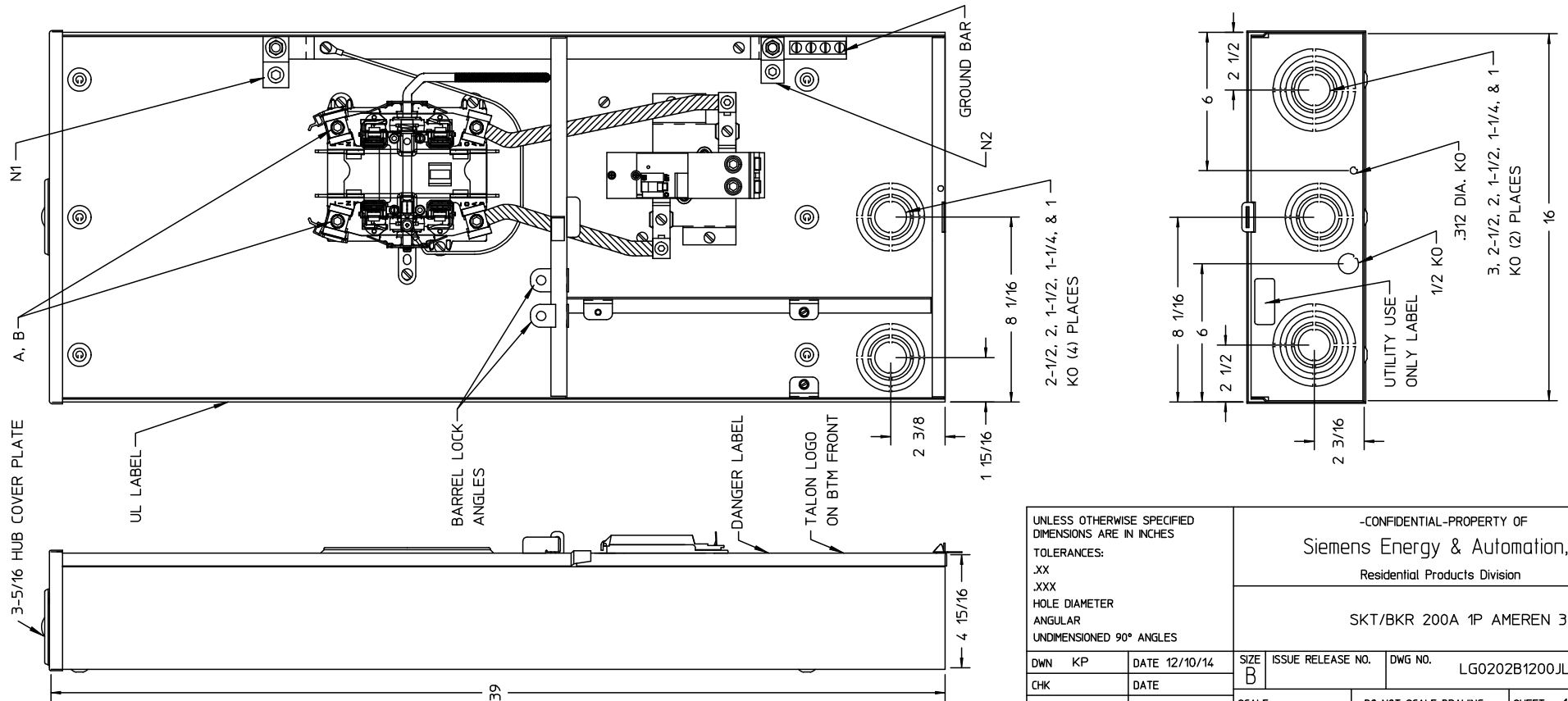
- PANELBOARD RATING:
- 200 AMPS MAX, 120/240 VAC, 1 PHASE, 3 WIRE
 - METER SOCKET RATING: 200 AMPS CONTINUOUS
 - 10,000 AMP SHORT CIRCUIT RATING
 - OUTDOOR ENCLOSURE (NEMA TYPE 3R)
 - RINGLESS, 5 JAW LEVER BYPASS
 - 200A BREAKER FACTORY INSTALLED
 - OVERHEAD & UNDERGROUND SERVICE

CONDUIT HUBS (RX TYPE)

TRADE SIZE	CATALOG NO.
1-1/4 INCH	EC38597 OR H38597-2
1-1/2 INCH	EC38598 OR H38598-2
2 INCH	EC38599 OR H38599-2
2-1/2 INCH	EC38600 OR H38600-2
HUB COVER PLATE	EC38595 OR H38595-1

PANELBOARD WIRE SIZES AND TORQUES

TERMINAL	WIRE SIZE	TORQUE
A, B	#6-350 kcmil	275 LB-IN
N1	#6-350 kcmil	375 LB-IN
N2	#6-250 kcmil	275 LB-IN
BRANCH BREAKER	SEE MARKINGS ON BREAKER	
GROUND BAR SLOTTED SCREWS	#14-1/0 AWG	50 LB-IN



UNLESS OTHERWISE SPECIFIED
DIMENSIONS ARE IN INCHES
TOLERANCES:
.XX
.XXX
HOLE DIAMETER
ANGULAR
UNDIMENSIONED 90° ANGLES

-CONFIDENTIAL-PROPERTY OF
Siemens Energy & Automation, Inc.
Residential Products Division

SKT/BKR 200A 1P AMEREN 39"

DWN KP	DATE 12/10/14	SIZE B	ISSUE RELEASE NO.	DWG NO. LG0202B1200JL6	REV
CHK	DATE	SCALE		DO NOT SCALE DRAWING	SHEET 1 OF 1
APVD	DATE				