

# SIMATIC PCS neo V4.0

Ready for all challenges

V4.0



## Improved control

The newest version of SIMATIC PCS neo boasts multiple improvements for plant operators in monitoring and control:

### Alarm out-of-service function for process areas or for individual alarms

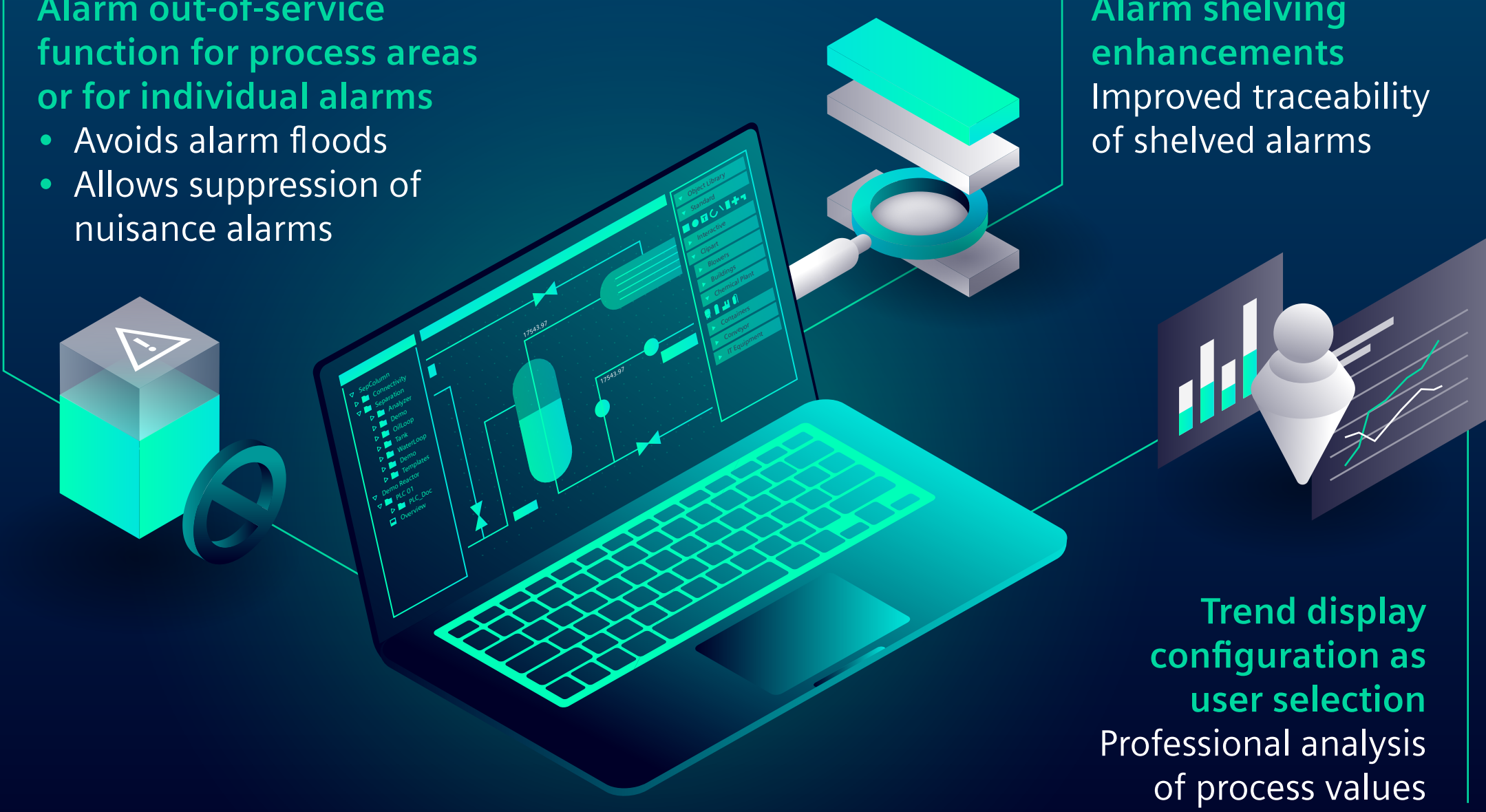
- Avoids alarm floods
- Allows suppression of nuisance alarms

### Alarm shelving enhancements

Improved traceability of shelved alarms

### Trend display configuration as user selection

Professional analysis of process values



## Jack-of-all-industries

Chemical, pharmaceutical, water & wastewater, and food and beverage (NEW Sugar NAHMAT Library): SIMATIC PCS neo is ready for the requirements of almost any industry.

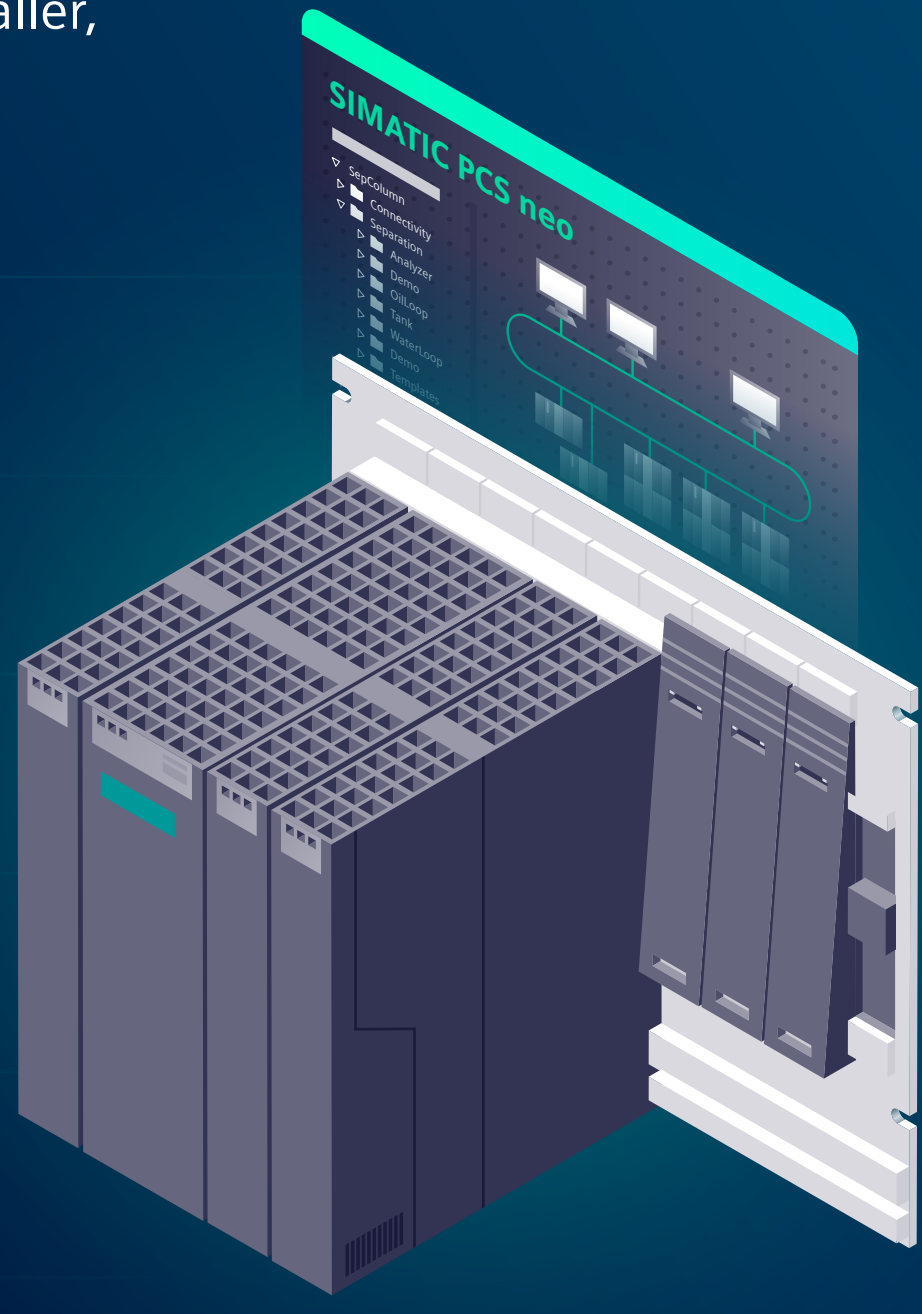


## Powerful and efficient

The newest SIMATIC S7-4100 controller generation is smaller, more efficient and designed for SIMATIC PCS neo.

### SIMATIC S7-4100

- COMPACT**  
30% smaller\*
- COMPATIBLE**  
Engineering-free switch from SIMATIC S7-410
- SUSTAINABLE**  
~50% less energy consumption\*
- MAINTENANCE-FREE**  
No battery or fan
- FUTURE-READY**  
With up to 6 PROFINET interfaces per station



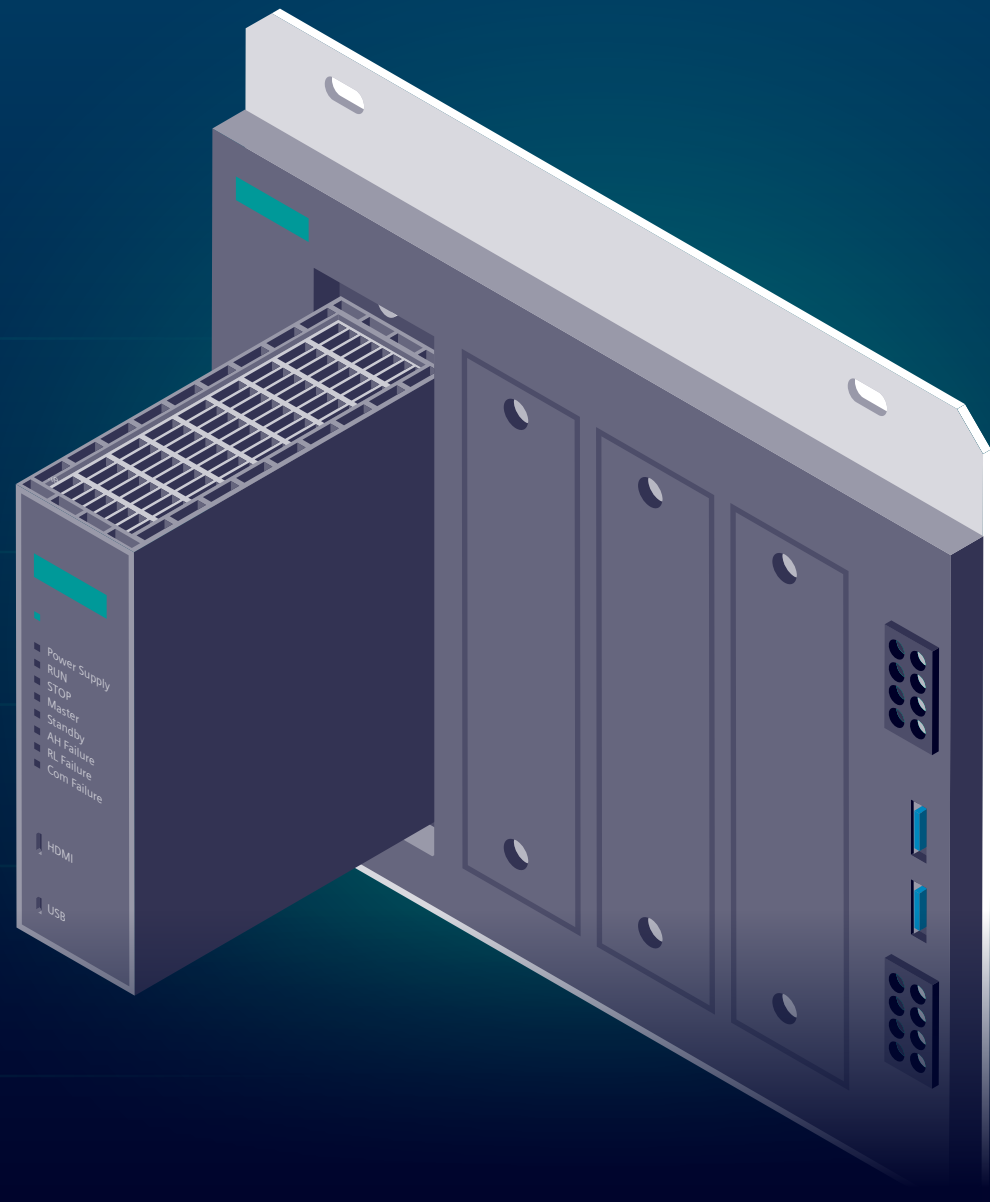
\*compared to SIMATIC S7-400

## Easy and secure data exchange

Version 4.0 features the fully integrated communication gateway SIMATIC CN 4100, which enables process data to be exchanged easily and with highest performance, availability and security between SIMATIC PCS neo and 3<sup>rd</sup> party plant sections or components both at the control and visualization level simultaneously. Full flexibility is ensured by support of various communication protocols like OPC UA.

### Communication Node SIMATIC CN 4100

- Allows for easy integration of plant sections and components
- Decreases the load for DCS controller
- Simplifies protocol engineering
- Increases plant security by segregating DCS and 3<sup>rd</sup> party networks

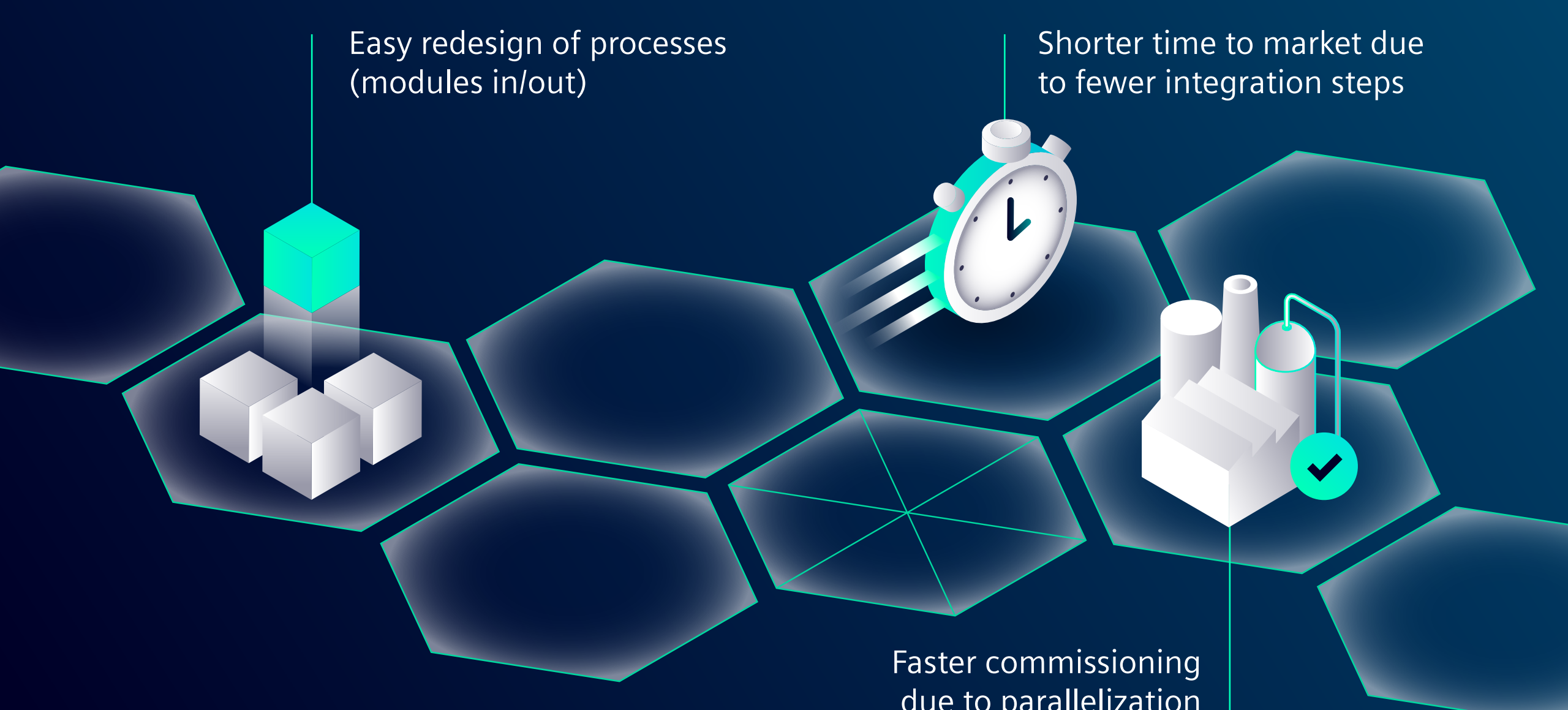


## Modular and flexible

Easy redesign of processes (modules in/out)

Shorter time to market due to fewer integration steps

Faster commissioning due to parallelization



## Highly scalable

As process plants get bigger and bigger thanks to networked systems, SIMATIC PCS neo keeps pace: version 4.0 offers a huge increase in scalability.

### SIMATIC PCS neo V3.1

Up to 32,000 POs (Process Objects)

Up to 32 controllers per project

### SIMATIC PCS neo V4.0

Up to 64,000 POs (Process Objects)

Up to 56 controllers per project

