

Catalog Numbers, Features and Ratings

|            |         |
|------------|---------|
| WET11200BU | 1-PHASE |
| WET31200BU | 3-PHASE |

- MODULE RATING: 1200 AMPS MAX, 240V AC MAX.
- 100,000 AIC RATING MAX.
- ADDED MOUNTING RAILS AND BRACKETS FOR SECURE MOUNTING
- FOR UNDERGROUND SERVICE ONLY
- EUSERC COMPLIANT CONSTRUCTION
- EUSERC DRAWING NO.S: 343 & 347.

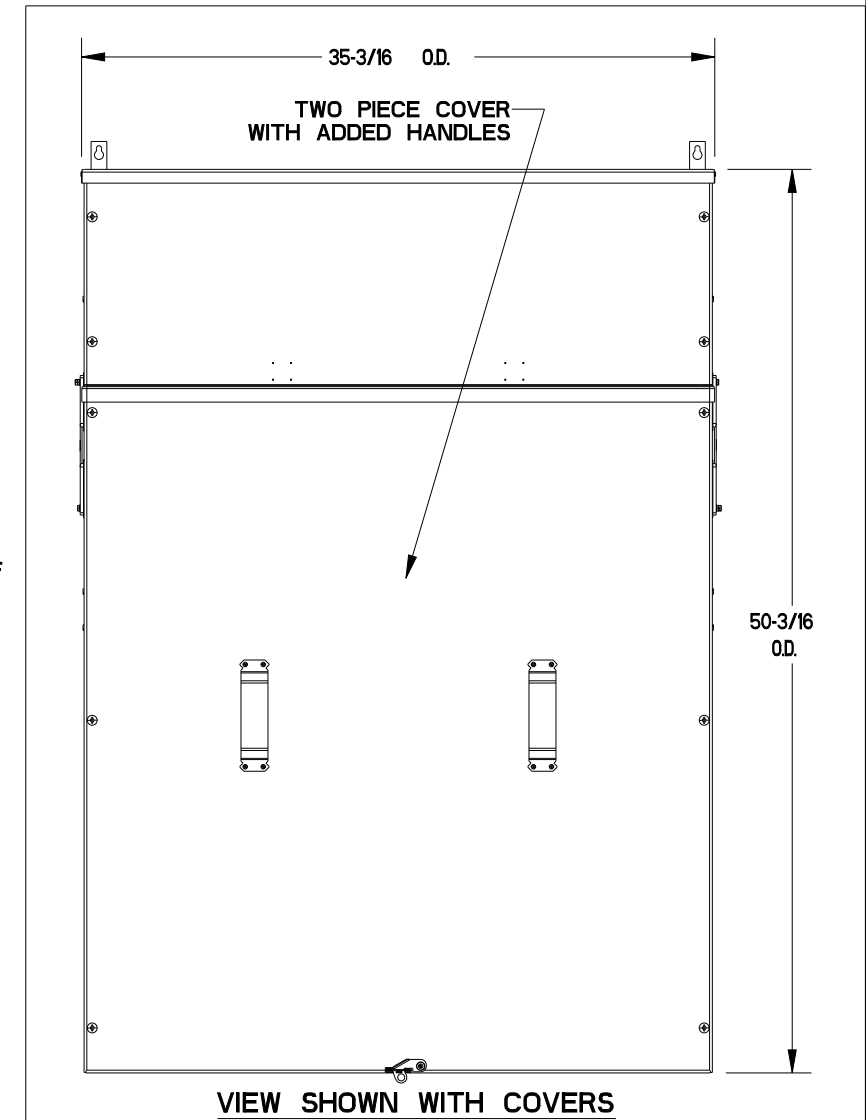
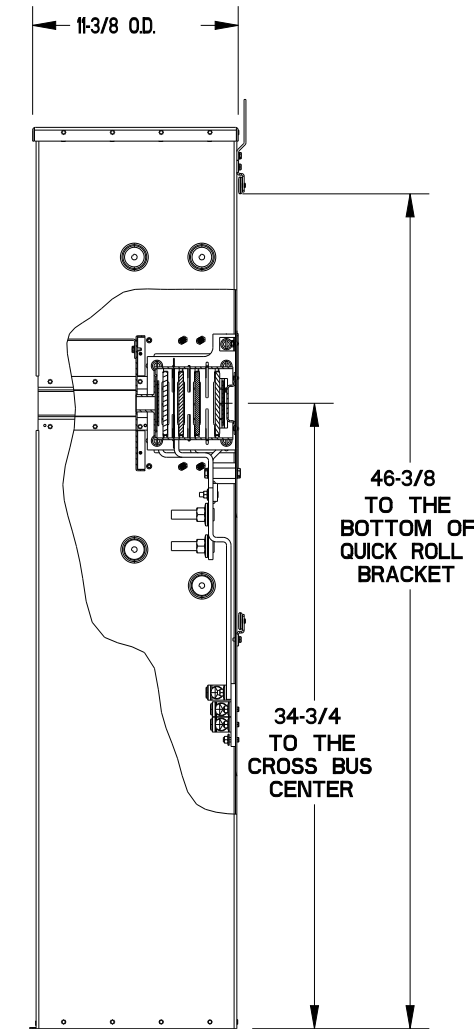
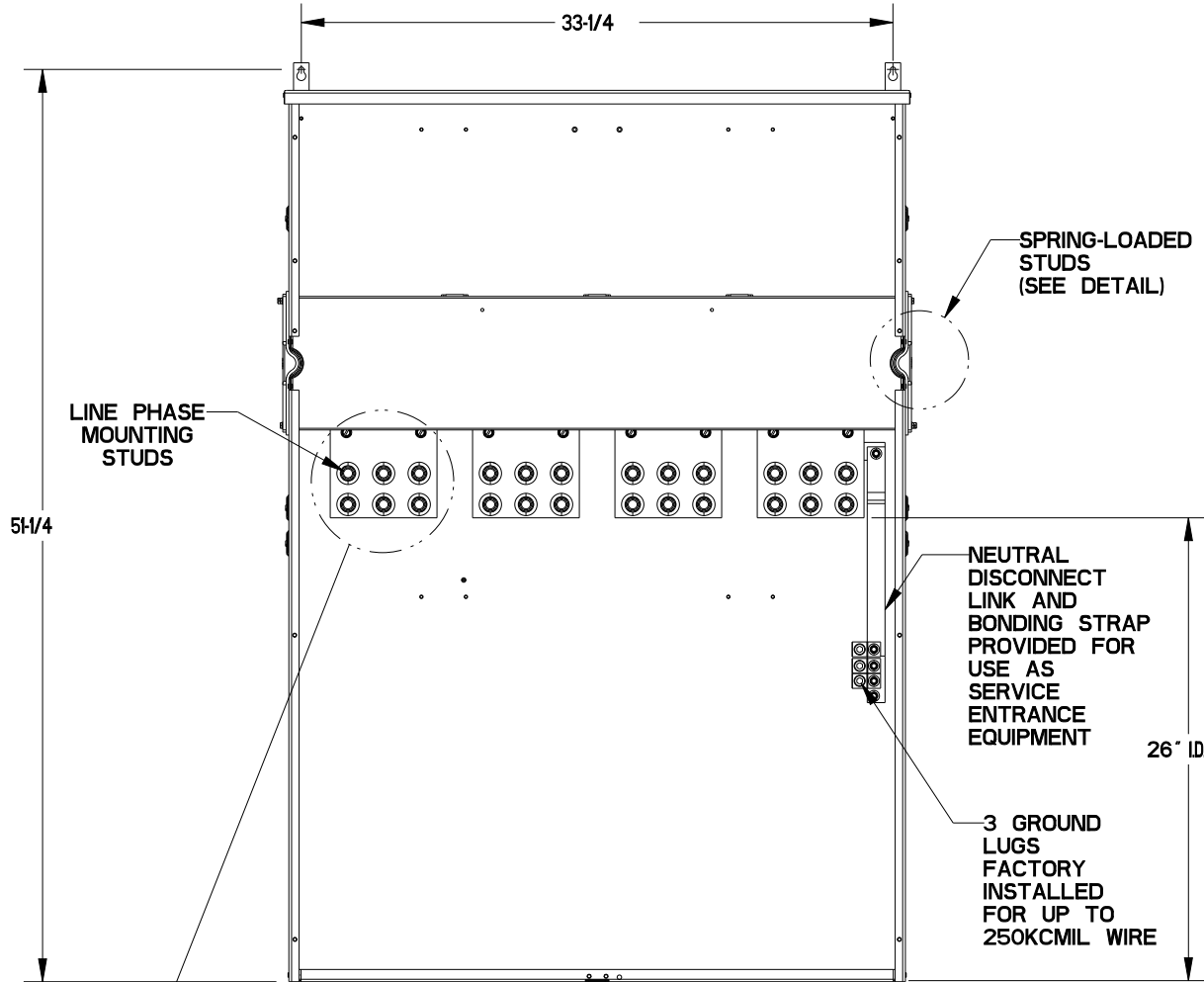
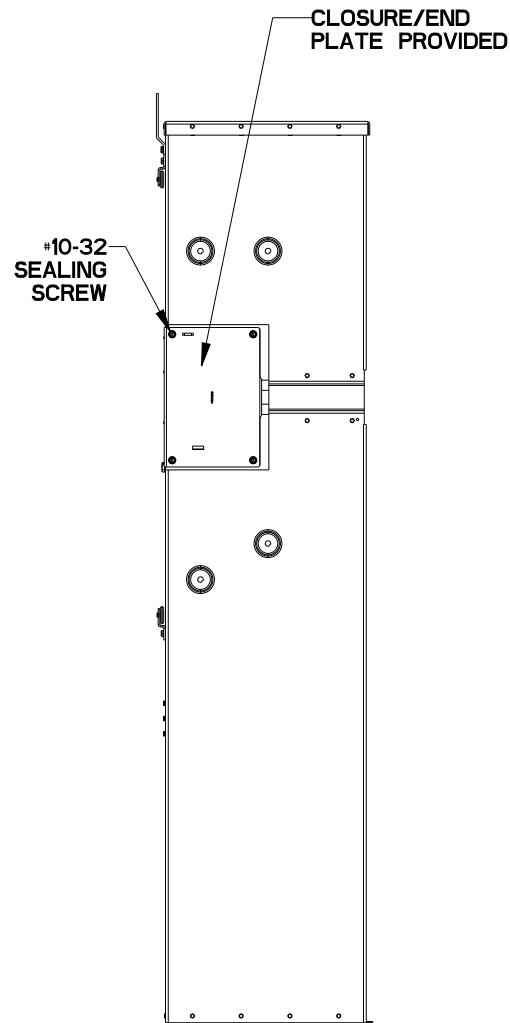
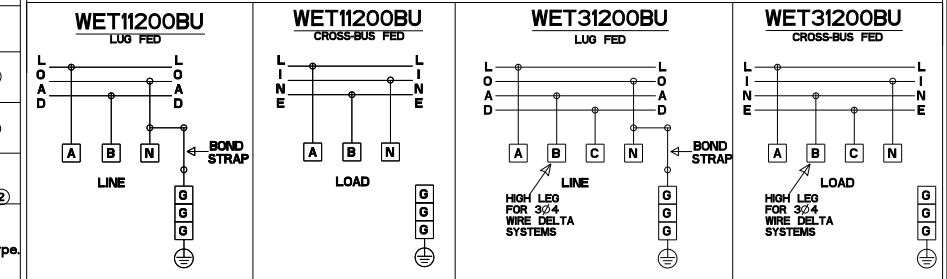
Replacement Parts, Accessories, and Additional Modules

| FOR USE WITH:           |                          |                              |
|-------------------------|--------------------------|------------------------------|
| Module Description      | Siemens Series No.       | Murray Series No.            |
| Main Breakers           | (W)MC, WB, WEB           | DB W                         |
| Switches                | WMP, WMS, WS, WES        | DPT W, DT W                  |
| Tap/Terminal Boxes      | WMTB, WTB, WET           | DTB W                        |
| Pull Boxes              | WMMB, WPB, WAPB          | DPB W                        |
| Meter Modules           | WMM, WxMM, WMT, WML, WMK | DG.W, DC.W, DL.W             |
| Extension Box           | WMEX                     | DS                           |
| Bussed Elbow            | BE                       | DL                           |
| Siemens Accessories     | Catalog Number           | Req'd Torque                 |
| Single Bolt Joint (1ph) | QC1 or SBJ1              | 400-480 LB-IN [35-40 FT-LBS] |
| Single Bolt Joint (3ph) | QC4 or SBJ4              |                              |
| GND Bar Kit             | ECLX069M                 | N/A                          |
| Hub Cover Plate         | ECHV000                  | N/A                          |

| Lugs for Phase and Neutral Connections (not supplied) |         |               |             |                     |                 |  |
|---|---------|---------------|-------------|---------------------|-----------------|--|
| NEMA Lug ①  | MFG     | Wire Range    | Type        | No. Wires per phase | Torque (lb-in.) |  |
| LK13750N2E  | SIEMENS | 500-750 KCMIL | MECHANICAL  | 3                   | 500②            |  |
| LK33750N2E  |         |               |             |                     |                 |  |
| LK14500N2E  | SIEMENS | 1/0-500 KCMIL | MECHANICAL  | 4                   | 500②            |  |
| LK34500N2E  |         |               |             |                     |                 |  |
| 2ACL-500  | ILSCO   | 500 KCMIL     | COMPRESSION | 4                   | N/A             |  |
| 2ACL-750  | ILSCO   | 750 KCMIL     | COMPRESSION | 3                   | N/A②            |  |

① Order one mechanical lug kit for mains and neutral. Contact Lug manufacturer for compression lug quantities supplied for each kit.  
 ② Kit contains more than one lug type. Reference kit instruction sheet for the actual torque value for each lug type.  
 ③ See lug manufacturer's instruction sheet supplied with the connector for tool, die and number of crimps.

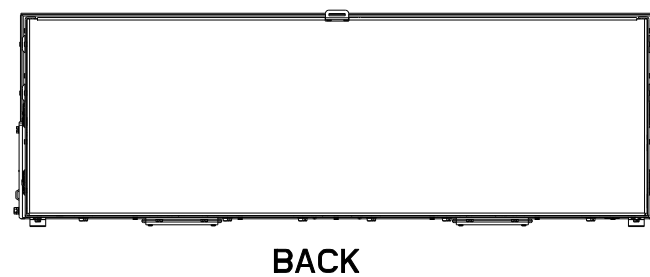
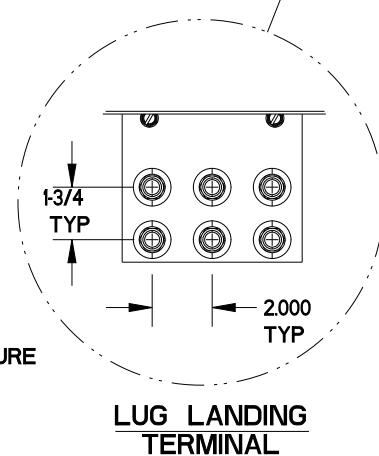
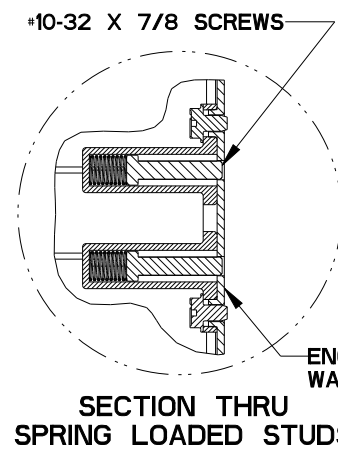
1200A Euserc Tap Box Schematics



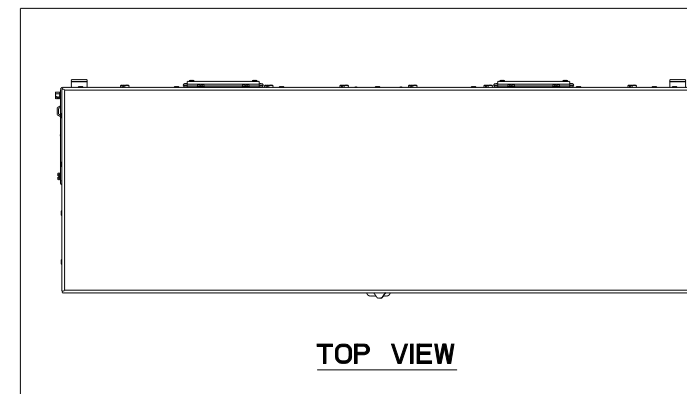
WET31200BU (3-PHASE) SHOWN VIEWS SHOWN WITHOUT COVERS

PARTIAL SECTION

VIEW SHOWN WITH COVERS



BACK



TOP VIEW

Siemens Industry, Inc.

PowerMod™ Tap Boxes

CATALOG NO.S:

WET11200BU and WET31200BU  
EUSERC Service Entrance Tap Boxes

SIZE B

DWG NO.:

1200A\_E\_SE\_TAP-BXS