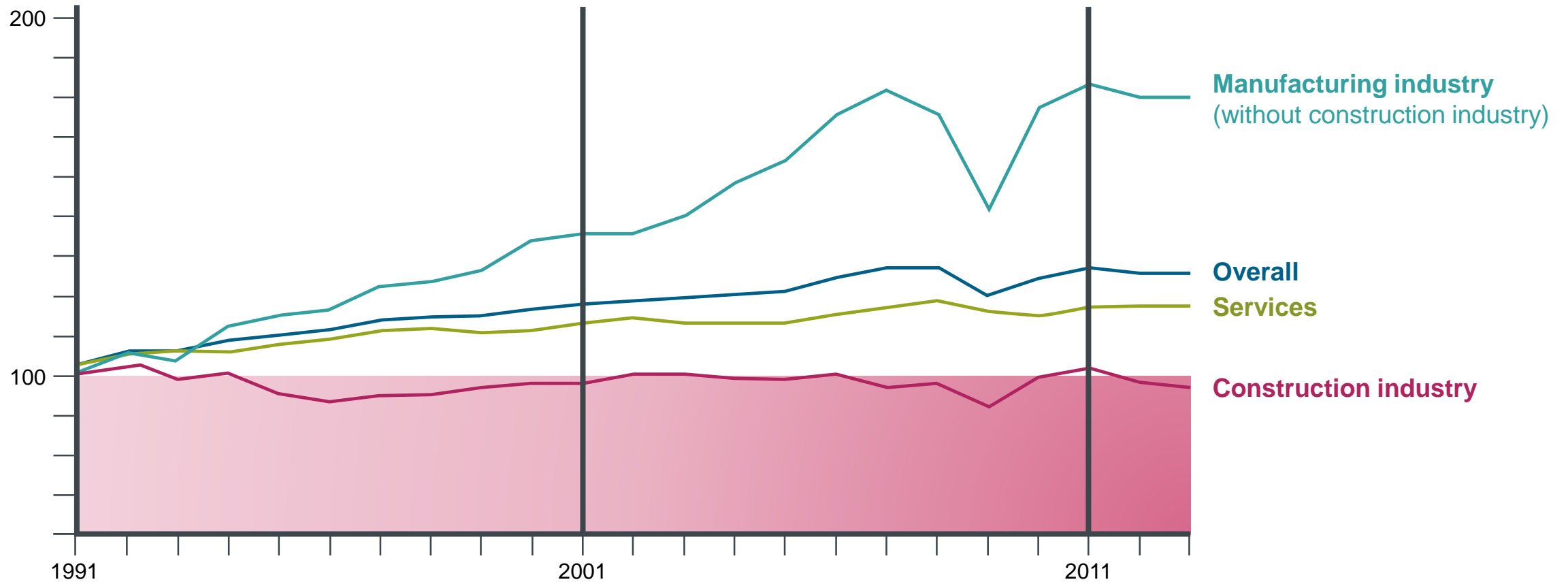


Open BIM

Wolfgang Hass
Principal Expert –
Press Conference December 4, 2018

The manufacturing industry faced similar challenges – How did it improve?

Productivity per employee



Source: Statistisches Bundesamt, Fachserie 18, Reihe 1.5, 2013; Volkswirtschaftliche Gesamtrechnungen

Construction sector realities driving the adoption of BIM

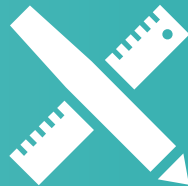
30%

of projects do not meet original program or budget



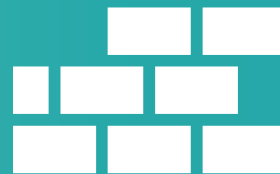
92%

of planners confirm that not all information is available when plans are made



37%

of materials used in construction become waste



10%

of the cost of a project is typically due to change orders



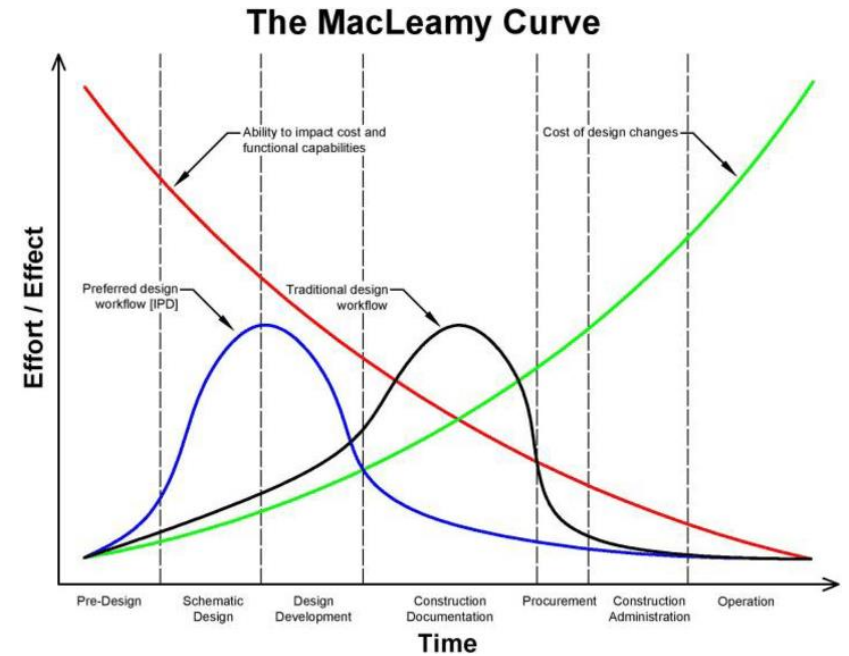
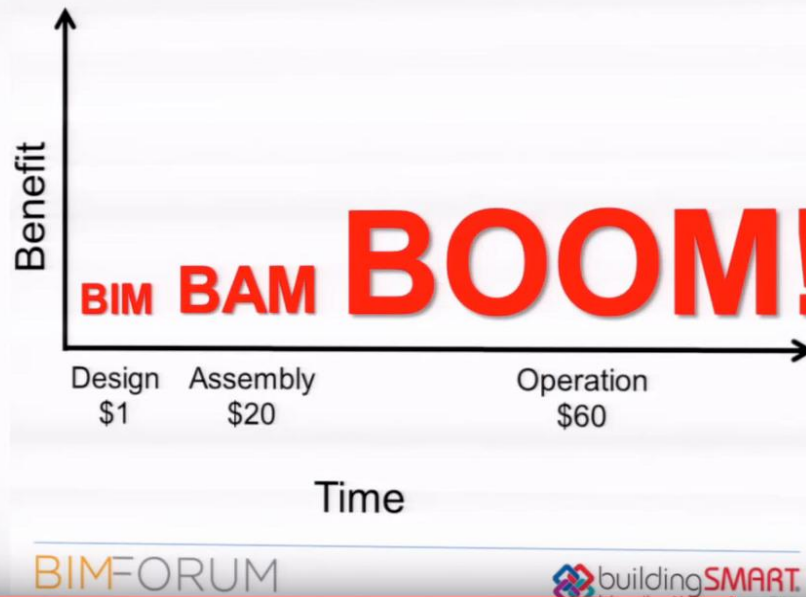
38%

of carbon emissions are from buildings, not cars



Source: CMAA Owners Survey, CMAA Industry Report, Economist Magazine

Restricted © Siemens Switzerland Ltd 2018



Phases of the building life cycle

Building Technologies' offerings

Products

Systems

Solutions

Applications

Dismantling

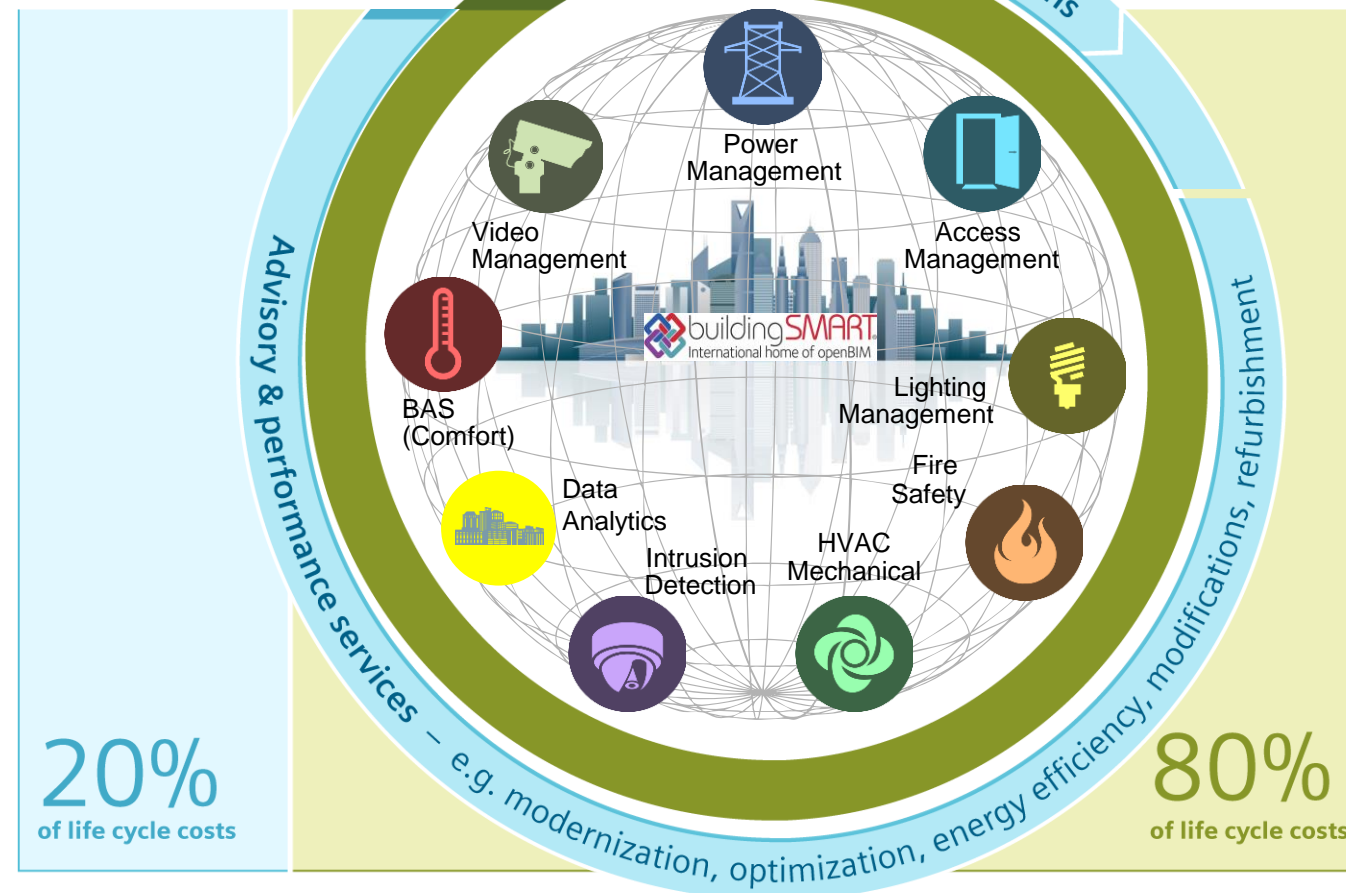
Building life cycle phases

Idea

Plan

Build

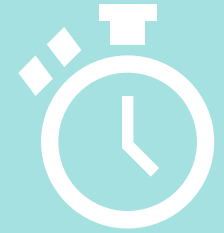
Operation



These are levers of success according to our experience

Data

Time



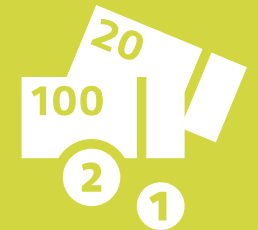
Process

Quality



Tools

Costs



Product Data – The base for BIM

BIM-compliant data according to ...

VDI 3805/ISO 16757

Data structures for electronic product catalogues for building services

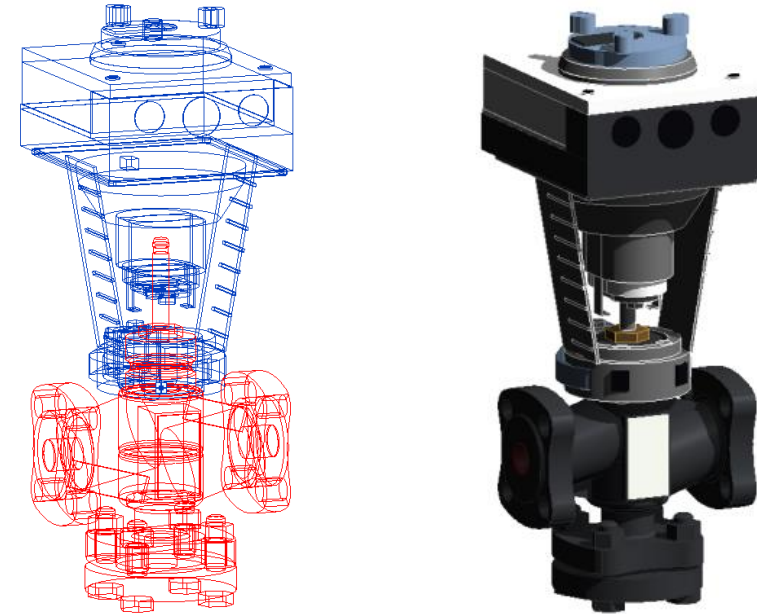
IFC/ISO 16739

Industry Foundation Classes (IFC) for data sharing in the construction and facility management industries

COBie standard

Construction Operations Building Information Exchange

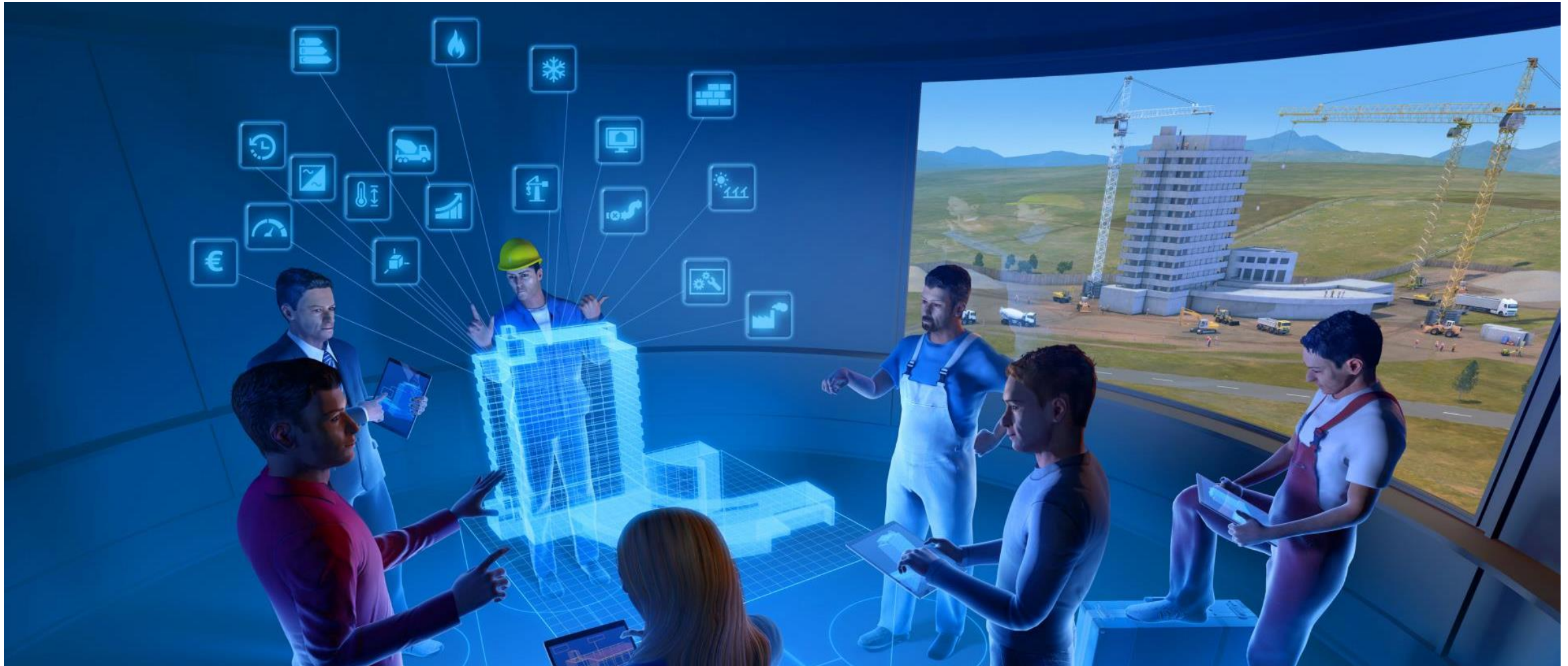
SIEMENS
Ingenuity for life



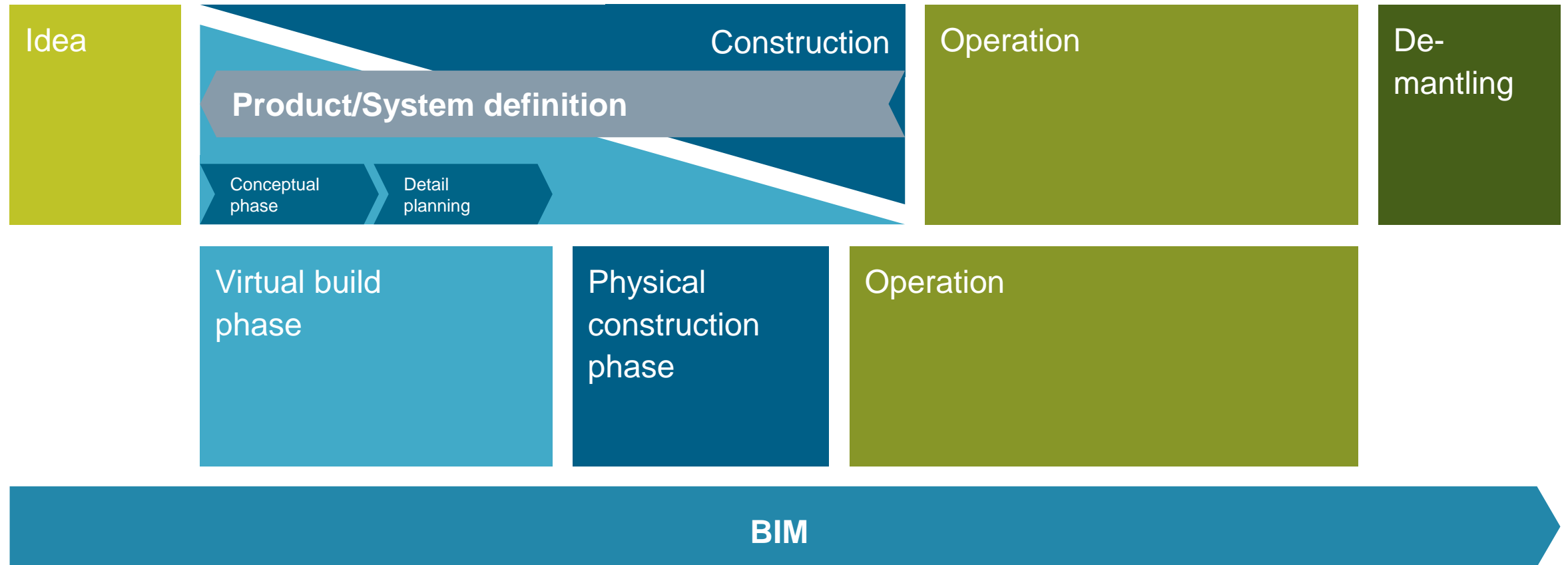
We already have **2,200** products available – and more to come

BIM Data today and tomorrow

SIEMENS
Ingenuity for life

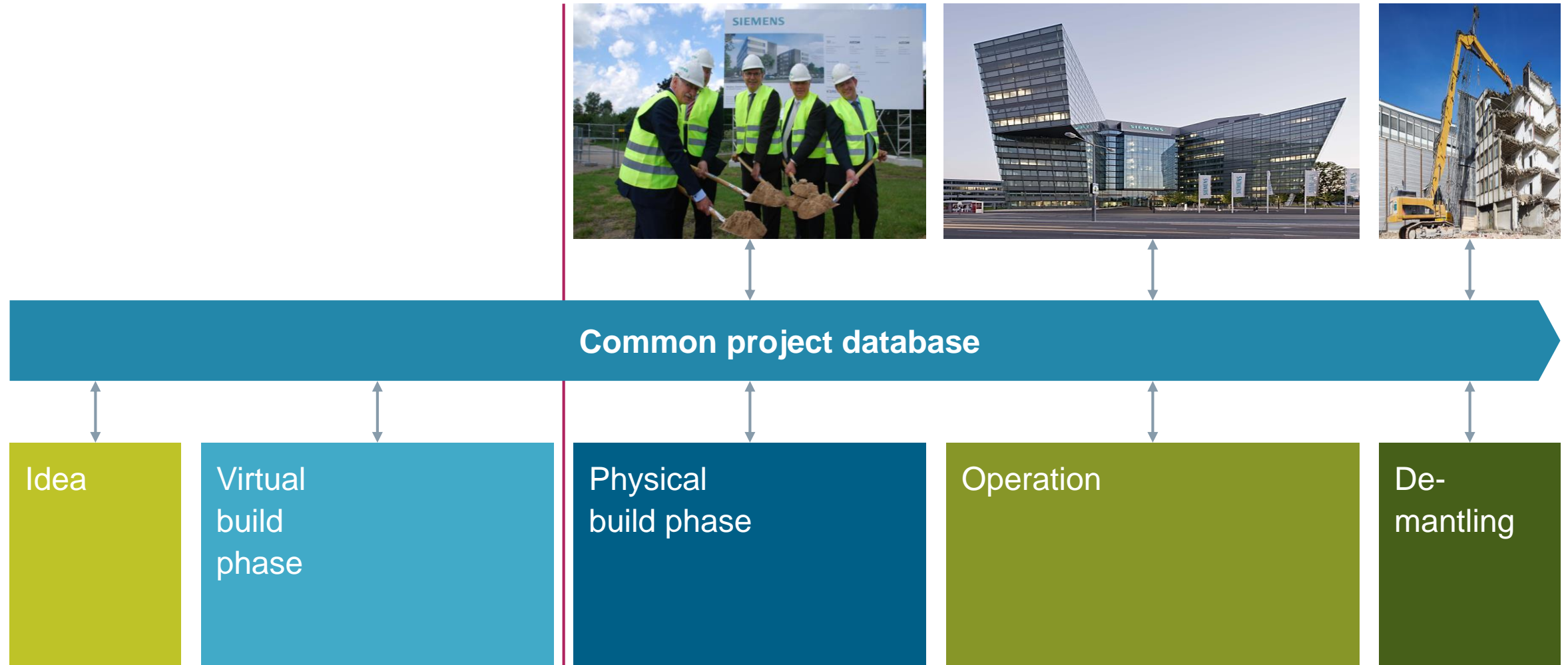


How does BIM change the construction process



The Digital Twin

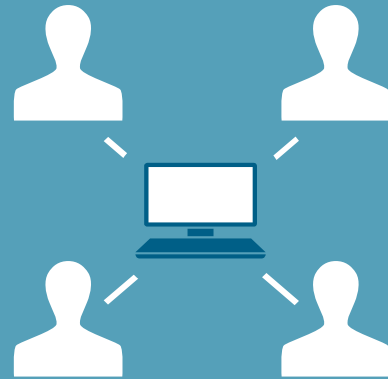
SIEMENS
Ingenuity for life





4 key elements of BIM

Plan and
build together



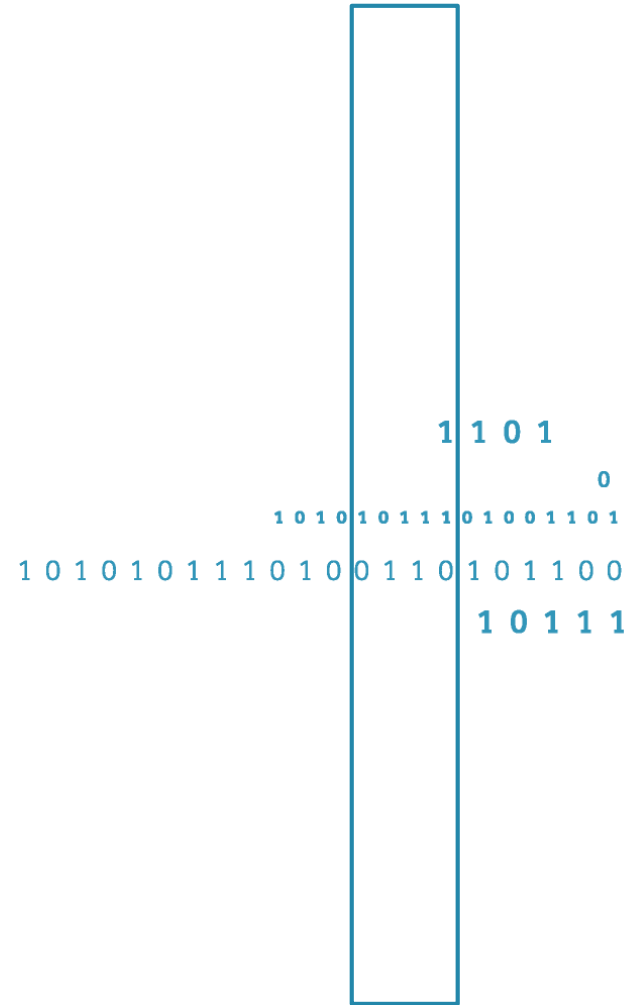
Create data
only once

Build twice



For the entire life-cycle

Change



Contact page

SIEMENS
Ingenuity for life



Wolfgang Hass
Principal Expert
Siemens Building Technologies

Theilerstrasse 1a
6300 Zug

E-Mail: wolfgang.hass@siemens.com

siemens.com