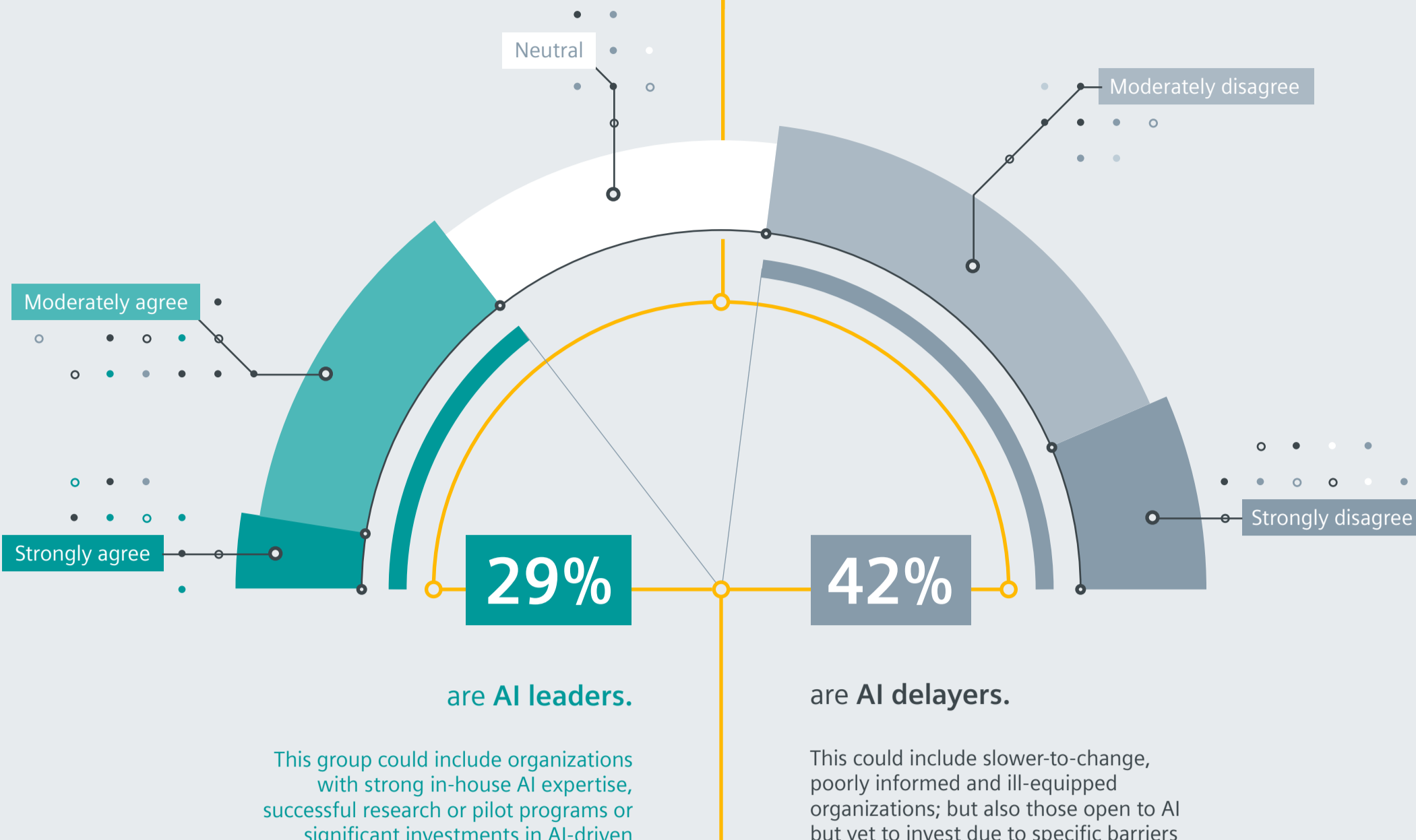


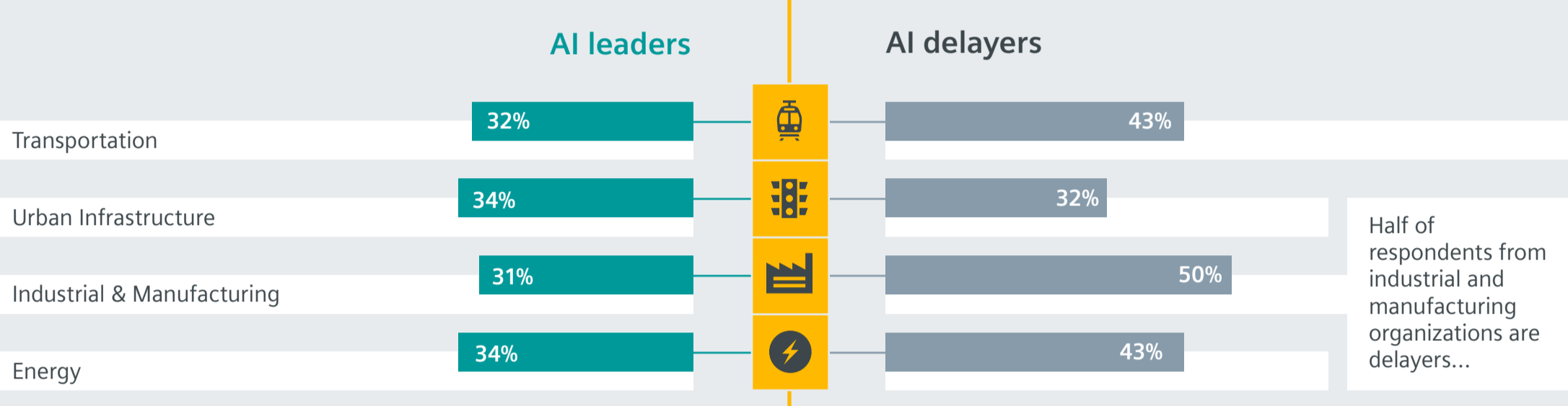
Top industrial AI organizations

What separates them from the rest?

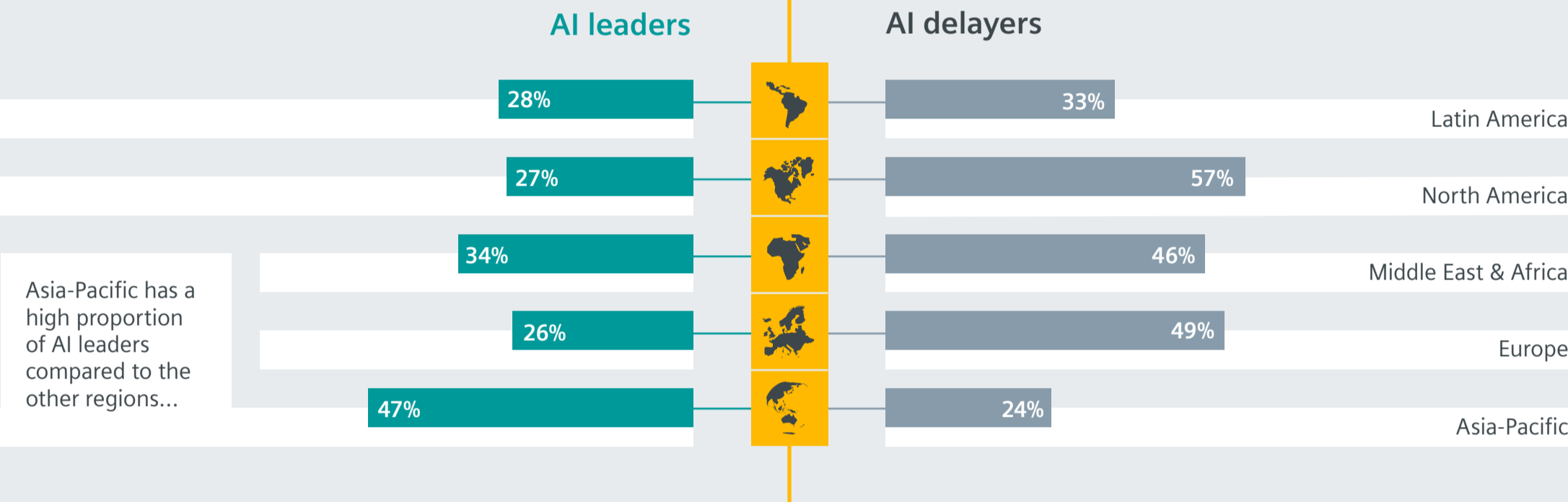
My organization is an industry leader in AI



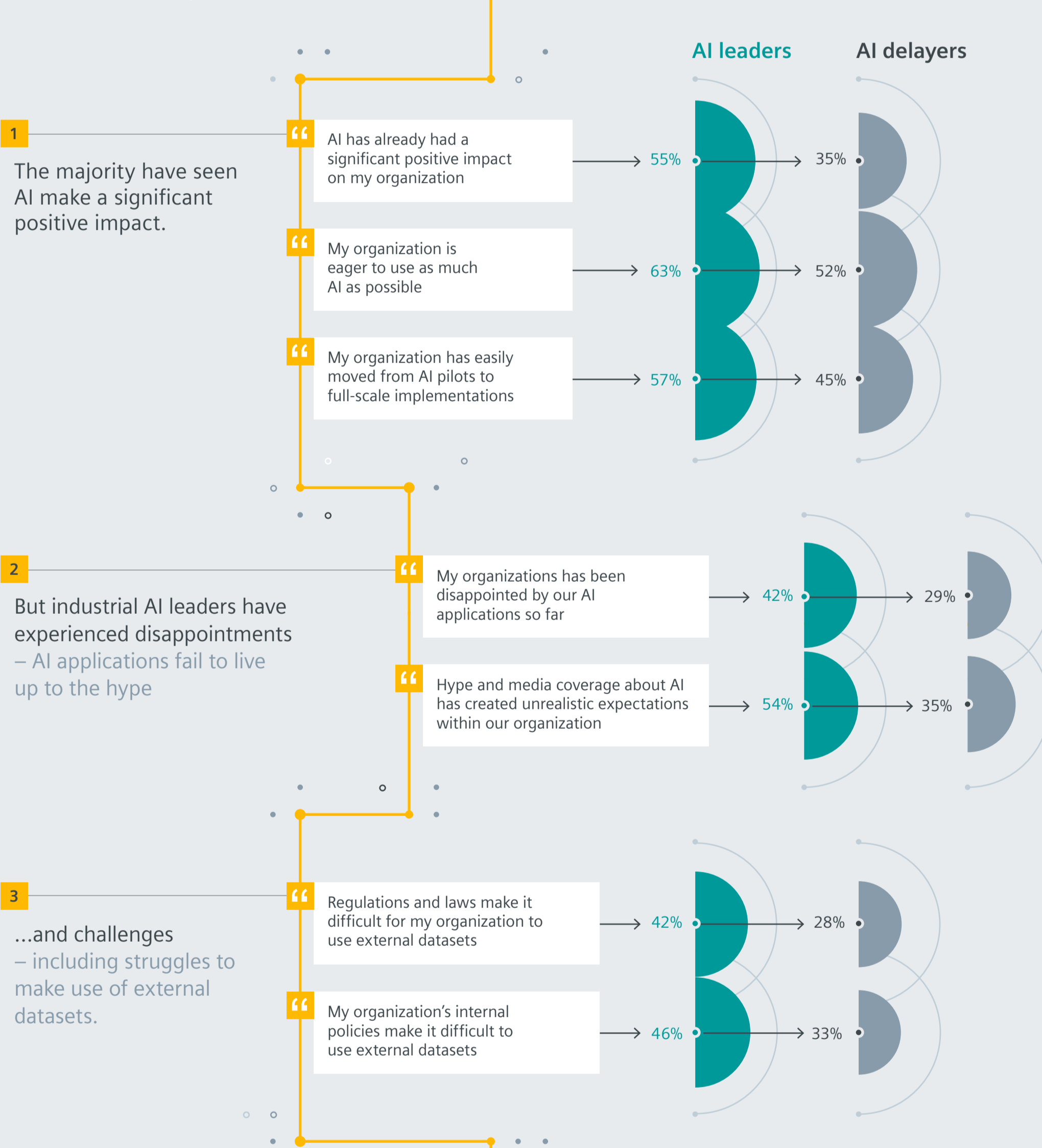
By industry



By region

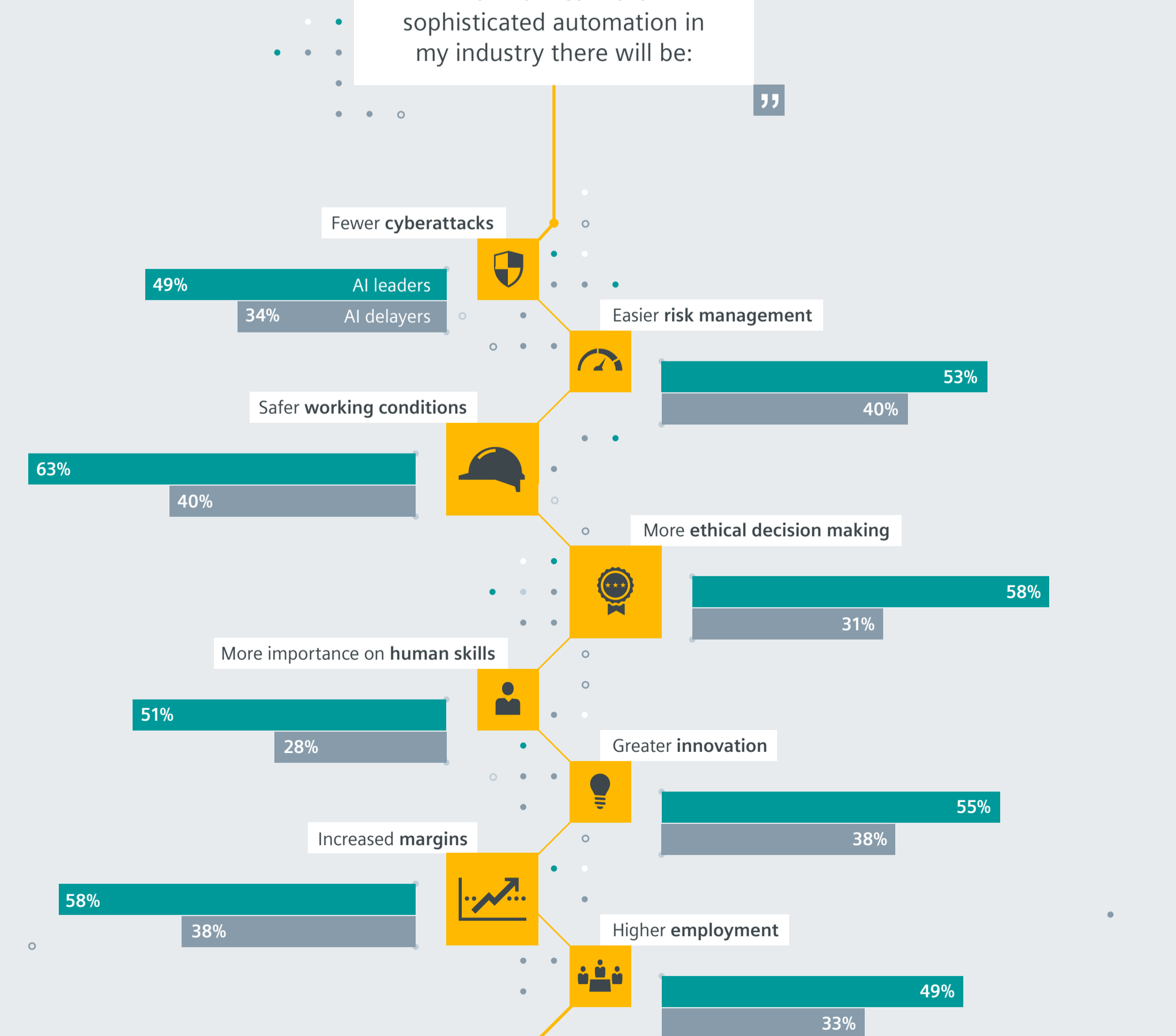


Leading organizations have moved more easily from pilots to full-scale implementations



But nevertheless, AI leaders are much more positive about the future of industrial AI than delayers.

As AI drives more sophisticated automation in my industry there will be:



1 Leaders in industrial AI have a distinct outlook for the present benefits and future potential of the technology.

2 They also understand the limitations and challenges, but nonetheless believe AI will have a positive impact.

3 AI delayers accelerating their AI strategy can expect a similar outlook to develop in their organizations as their journey into AI unfolds.

What is AI?
In this report, and the research that supports it, 'artificial intelligence' or 'AI' refers to a broad spectrum of methods or technologies that perform tasks which would normally require functions of human intelligence such as learning, judging, and problem-solving. This is more in keeping with the contemporary business understanding of AI, rather than any technical or academic conventions.

About the research
Siemens and our research partner conducted primary research into the uses of, attitudes to, and outlooks for AI in industrial organizations. We surveyed 515 senior business leaders in the energy, industrial/manufacturing, urban infrastructure, and transportation sectors. In order to qualify for the survey, respondents needed to be responsible for, involved in, or knowledgeable about their organization's existing or planned use of AI and related technologies, strategies, budgets, and applications. The research included respondents from North America, Latin America, Europe, the Middle East and Africa, and Asia-Pacific and was concluded in September 2019. All respondents were from organizations with an annual revenue of at least \$100 million.