

CATALOG NO. MC1020B1100EY

TYPE 3R ENCLOSURE (RAINPROOF) TOP FEED ONLY.

SUITABLE ONLY FOR USE AS SERVICE EQUIPMENT.
 DEVICE RATING: 100 AMPS MAXIMUM, 120/240 VAC (4 JAW), SINGLE PHASE, THREE WIRE, OR 208Y/120 VAC (5 JAW), SINGLE PHASE, THREE WIRE. METER SOCKET RATING: 100 AMPS CONTINUOUS.

THIS DEVICE HAS A MAXIMUM SHORT CIRCUIT CURRENT RATING OF 65,000 RMS SYMMETRICAL AMPERES AT 240 VAC MAXIMUM. (Wait-Hour meter not included in short circuit current rating). THE ACTUAL RATING IS DEPENDENT ON THE BRANCH BREAKER INSTALLED IN THIS PANELBOARD AND THE SERVICE DISCONNECT MAIN BREAKER INSTALLED IN THIS PANELBOARD. THE CORRECT BRANCH BREAKER AND MAIN SERIES COMBINATIONS TO BE USED WITH THE VARIOUS SHORT CIRCUIT CURRENT RATINGS ARE LISTED IN THE TABULATION BELOW. ANY CIRCUIT BREAKER INSTALLED OR REPLACED IN THIS PANELBOARD MUST BE MANUFACTURED BY SIEMENS AND MUST BE OF THE CORRECT TYPE AS INDICATED IN THE TABULATION BELOW.

MAX short circuit current rating in RMS symmetrical Amperes	Panelboard Main Installed Service Disconnect *Breaker	BRANCH BREAKER	
		Field Installed Branch Circuit Breaker Types	Field Installed Branch Circuit Breaker Types
65,000	Murray Type MP-MT	Murray MP-T, MP-HT, MP-MT, MH-T, MP-GT, MP-HGT, MP-ET, MP-HET, MP-AT, MP-HAT	
	Siemens Type HQP	Siemens QP, QPH, HQP, QT, QPF & QPHF, QE, QEH, QAF, QAFH	
22,000	Murray Type MP-HT	Murray MP-T, MP-HT, MP-MT, MH-T, MP-GT, MP-HGT, MP-ET, MP-HET, MP-AT, MP-HAT	
	Siemens Type QPH	Siemens QP, QPH, HQP, QT, QPF & QPHF, QE, QEH, QAF, QAFH	
10,000	Murray Type MP-T	Murray MP-T, MP-HT, MP-MT, MH-T, MP-GT, MP-HGT, MP-ET, MP-HET, MP-AT, MP-HAT, TALON LQ	
	Siemens Type QP	Siemens QP, QPH, HQP, QT, QPF & QPHF, QE, QEH, QAF, QAFH, TALON LQ	

*Breakers rating must be greater than or equal to the device short circuit current rating.

FOR 1" FILLER PLATE ORDER ECQF3. FOR EQUIPMENT GROUND BAR ORDER ECLX SERIES. FOR 5TH JAW ORDER EC5J. IF HUB IS REQUIRED SELECT FROM LIST BELOW.

RX TYPE HUBS

SIZE	CAT. NO.
1 1/4"	EC38597
1 1/2"	EC38598
2"	EC38599
2 1/2"	EC38600

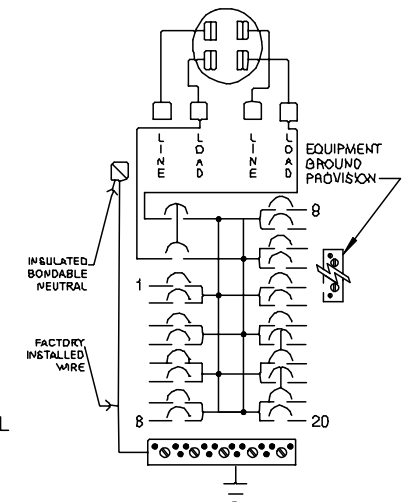
TERMINALS SUITABLE FOR USE WITH 60/75°C, AL/CU INSULATED WIRE

SIZE WIRE ONLY TO 60°C OR 75°C AMPACITY LIMITS AND IN ACCORDANCE WITH BREAKER MARKINGS AND WIRE BENDING SPACE REQUIREMENTS.

WIRE SIZE (AWG)	□	▣	⊙	●
2/0	110	-	-	-
1/0	110	50	-	-
1-3	110	50	45	-
4	110	45	45	-
6	110	45	45	35
8	-	40	40	25
10-14	-	35	35	20

TERMINAL WIRE RANGES (AWG)

- = (1) #2/0-6
- ▣ = (1) #1/0-14
- ⊙ = LIMITED TO (1) #1-14CU, #1-12AL OR (2 OR 3) *#10-14CU, #10-12AL
- = (1) #6-14CU, #6-12AL OR



TEST BLOCK CONTACT NUT (5/8" ACROSS FLATS): TORQUE TO 50 LB-IN.

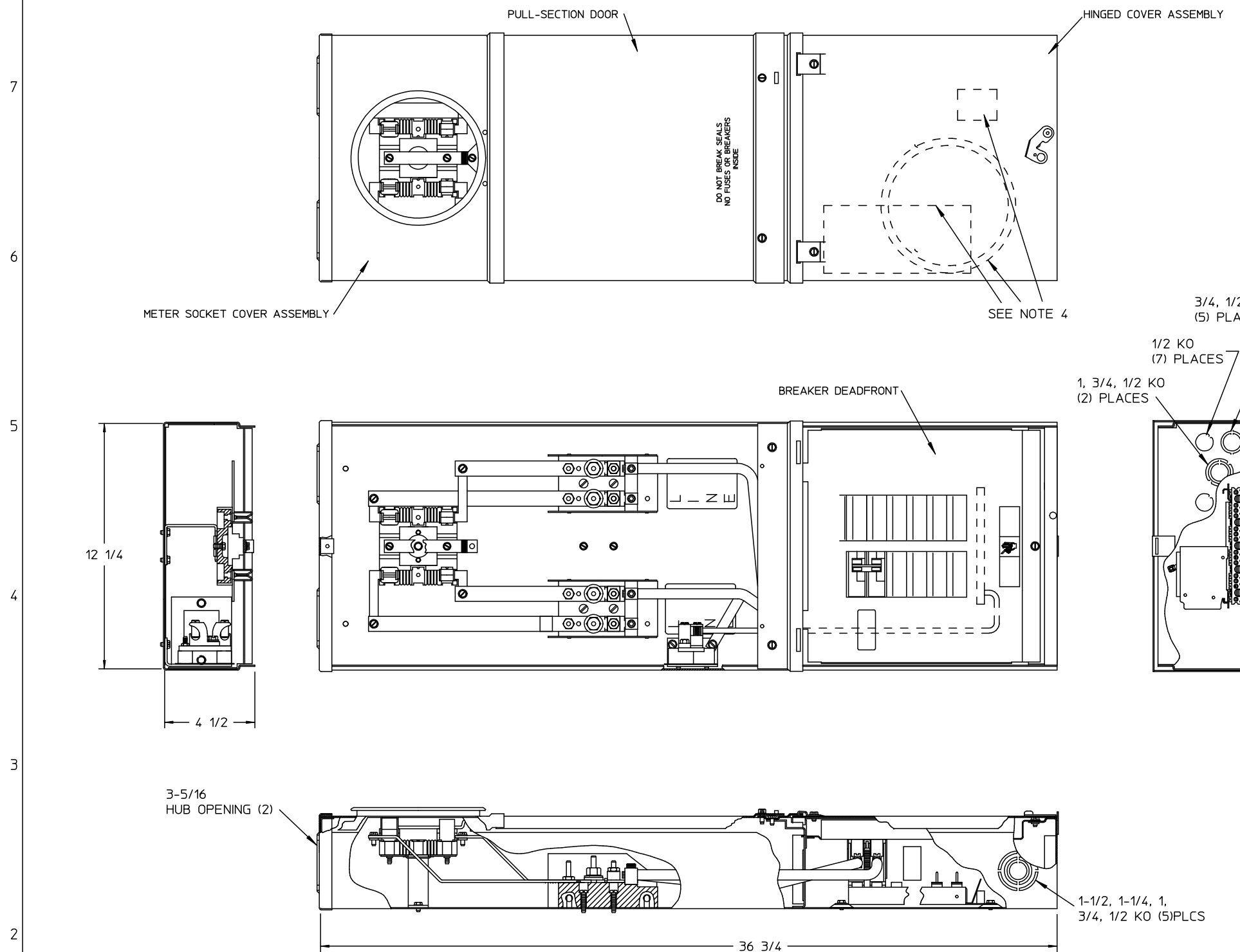
*ONLY EQUIPMENT GROUND TERMINAL MAY USE MORE THAN ONE CONDUCTOR PER TERMINAL.

UNLESS OTHERWISE SPECIFIED DIMENSIONS ARE IN INCHES
 TOLERANCES:
 .XX
 .XXX
 HOLE DIAMETER
 ANGULAR
 UNDIMENSIONED 90° ANGLES

-CONFIDENTIAL-PROPERTY OF
Siemens Energy & Automation, Inc.
 Residential Products Division

SKT 100A 1P HO (2) EUSERC

DWN	CJD	DATE 10-03-07	SIZE	ISSUE RELEASE NO.	DWG NO.	MC1020B1100EY	REV
CHK		DATE					
APVD		DATE	SCALE	DO NOT SCALE DRAWING	SHEET	1 OF 1	



- NOTES:
1. FINISH: GRAY
 2. CABINET: 16 GA GALV STEEL.
 3. 100 AMP, 120/240 VAC, 1PHASE, 3 WIRE
 4. SEALING RING, HUB COVER PLATE ASSEMBLY, NEMA INSTRUCTION SHEET PLACED INSIDE OF BOX BEFORE DEADFRONT IS SECURED.
 5. UL LISTED - FILE E27485