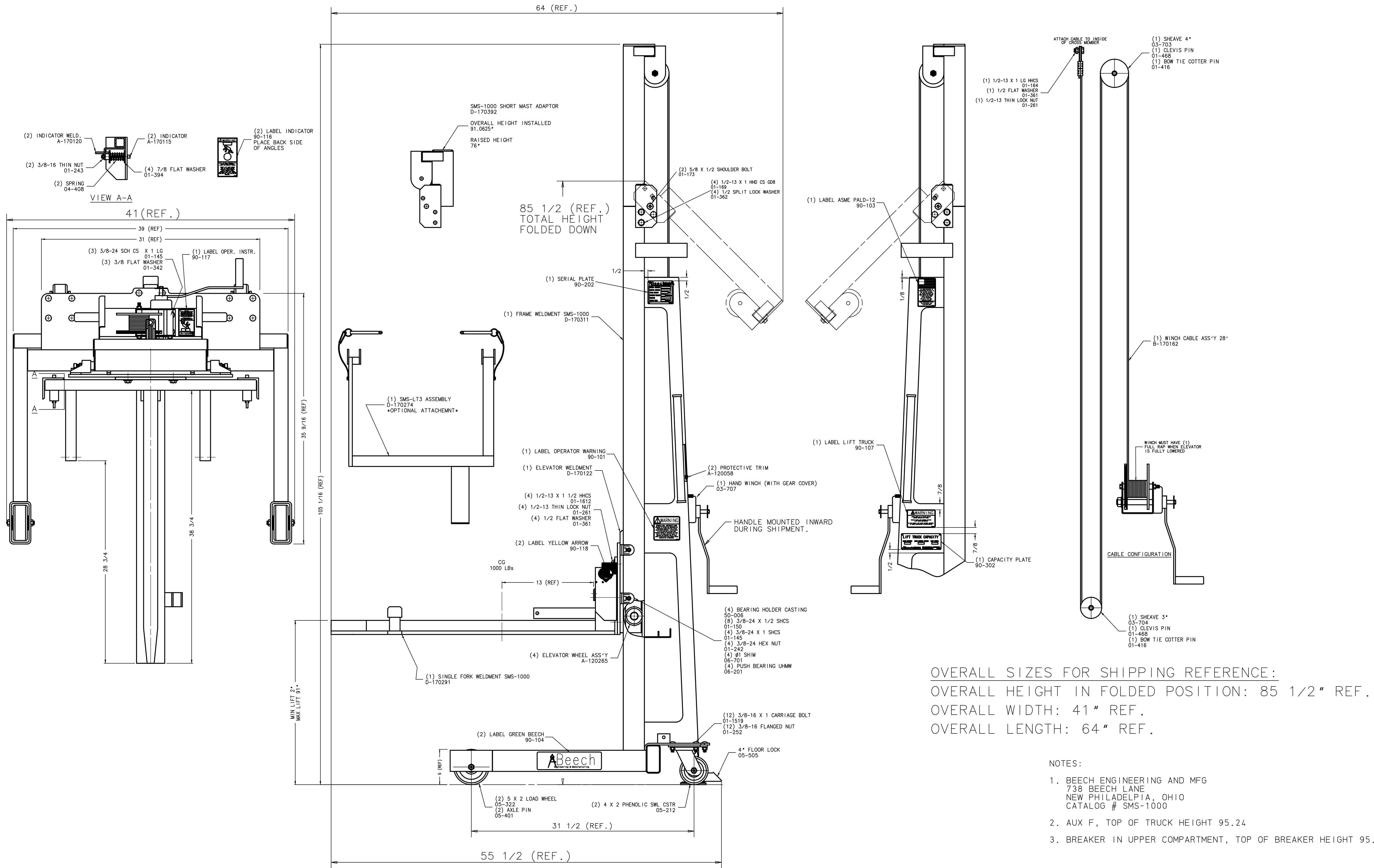


Als Betriebsheimnis anvertraut. Alle Rechte vorbehalten. Proprietary data, company confidential. All rights reserved. Confidant de titre de secret d'entreprise. Tous droits réservés. Confidado como secreto industrial. Nos reservamos todos los derechos.



OVERALL SIZES FOR SHIPPING REFERENCE:
 OVERALL HEIGHT IN FOLDED POSITION: 85 1/2" REF.
 OVERALL WIDTH: 41" REF.
 OVERALL LENGTH: 64" REF.

- NOTES:
- BEECH ENGINEERING AND MFG
738 BEECH LANE
NEW PHILADELPHIA, OHIO
CATALOG # SMS-1000
 - AUX F, TOP OF TRUCK HEIGHT 95.24
 - BREAKER IN UPPER COMPARTMENT, TOP OF BREAKER HEIGHT 95.95

SIMILAR TO: 18-822-415-072

Tolerance Toleranz (ISO) 1-Place decimal=0.06 2-Place decimal=0.03 3-Place decimal=0.01 Angular=1°	Material/Werkstoff	Mass : Masse Unit: Einheit inch	Paper size Format D Scale Maßstab NTS	12-02-2014 Date Datum	MGS Name	15-02-2007 Date Datum	POTTER Name	PTD-M1-R-D Department	RALEIGH Location	LIFT TRUCK (GM-SG) Designation Benennung	ISO-Projection Page Blatt
Released Freigegeben	Material No./Nr. 1	Material No./Nr. 2	14/0968 Date Datum	05 Revision	SIEMENS Company	GX-001-912-001 Item number Sachnummer	1 Page Blatt				