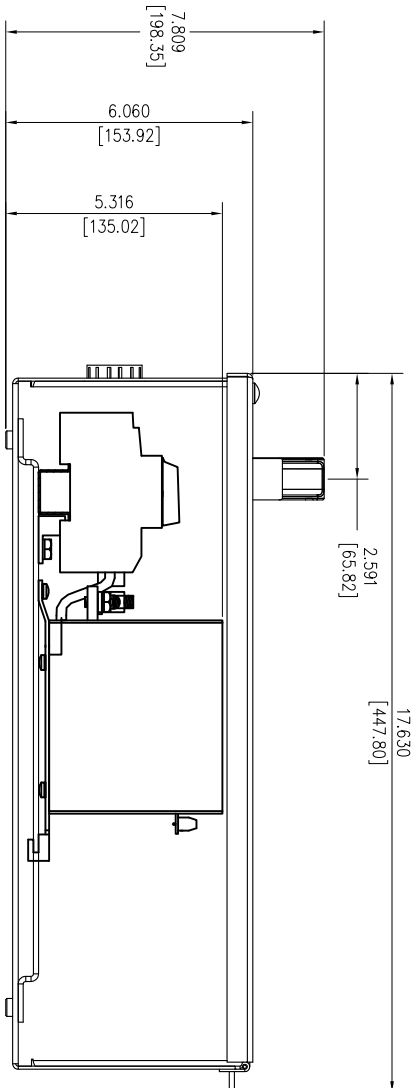
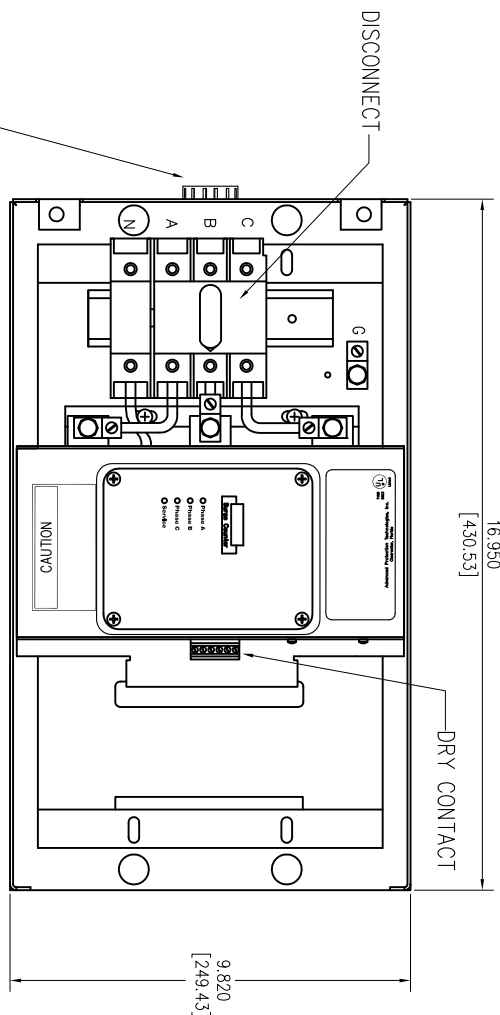
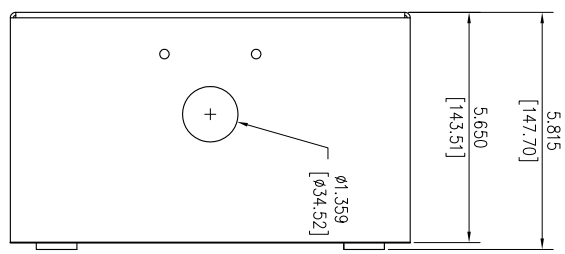


SURGE PROTECTIVE DEVICE (SPD)
WEIGHTS & DIMENSIONS
NEMA RATING: 1



ENCLOSURE SPECS:
DESC: U10E10 ENCLOSURE, HINGED
DIM: 10"H x 17"W x 6"D
MAT: GALVANEAL, 16 GAUGE
FINISH: POWDERCOAT ANSI 61 GRAY
NEMA RATING: 1
DEVICE WEIGHT: 9.4 LBS. (4.2KG.)

| Rev | C.N. | Date |
|-----|------|-------------------------|
| △ | - | Denotes latest changes. |
| □ | - | Critical dimension. |

| | | |
|--|-----------------|---|
| DESIGNED BY H. DRIGGERS | DATE 6/17/26 | Confidential - Property of Siemens Industry, Inc. Building Technologies Division |
| DRAWN BY MAG | DATE 6/17/26 | |
| TPS3-05 SERIES 100K-300K IN U10E10 ENCLOSURE | | Dwg No. 43D-TPS3-05-M SCALE NONE SHEET 1 of 1 |