

Industry trends TIA Portal in Digital Factory

Artificial Intelligence
Generative Design
Advanced Robotics
Individualization
Additive Manufacturing
Future of Automation
Edge Computing
Internet of Things

Digitalization

Essential market and customer requirements

SIEMENS
Ingenuity for life



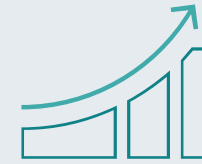
Speed



Flexibility



Quality



Efficiency

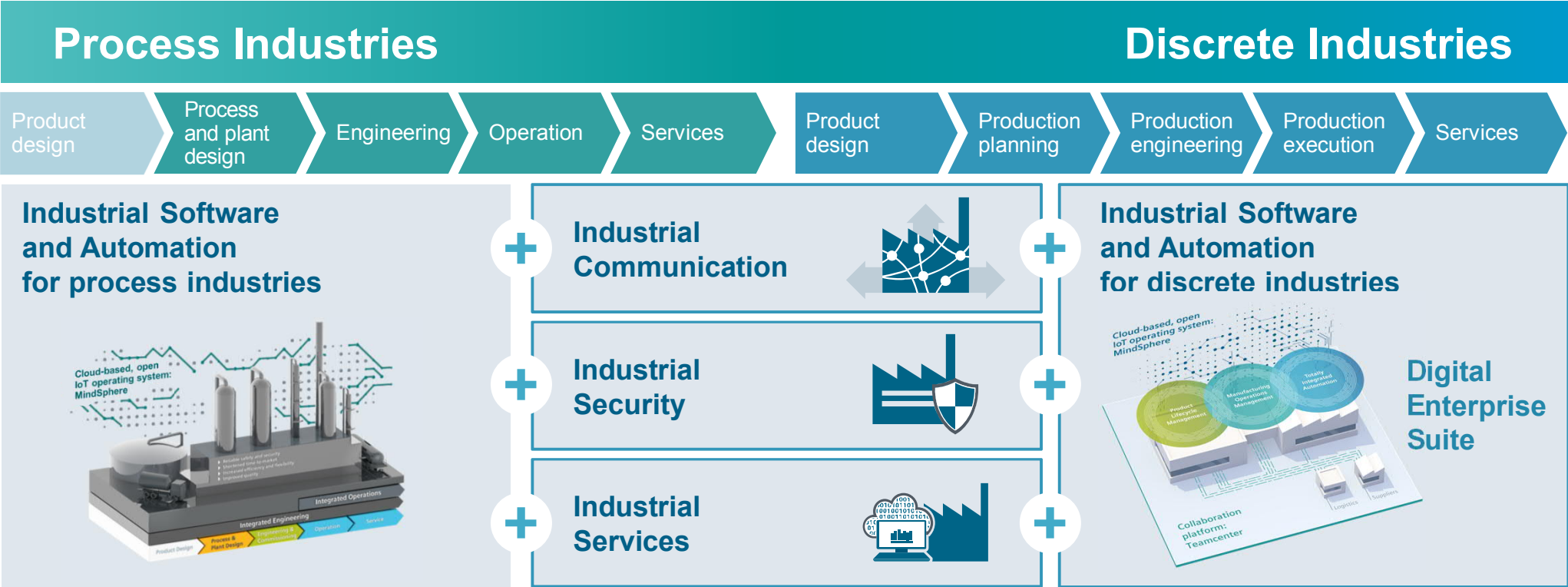


New business models



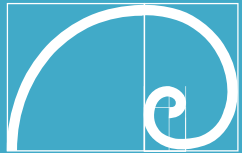
Security

Digital Enterprise

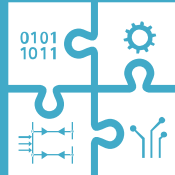


Technological forces transforming industry

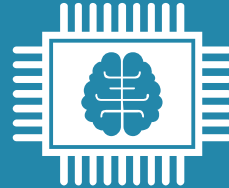
Changing the way products come to life



Generative design



Intelligent models



Intelligent automation



Additive manufacturing



Cloud ecosystems



Knowledge automation



System of systems



Advanced robotics

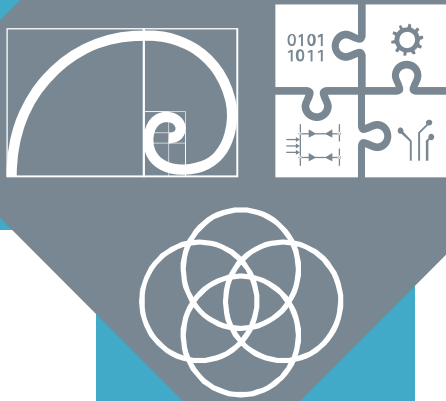


Big data analytics

Changing the way products are realized

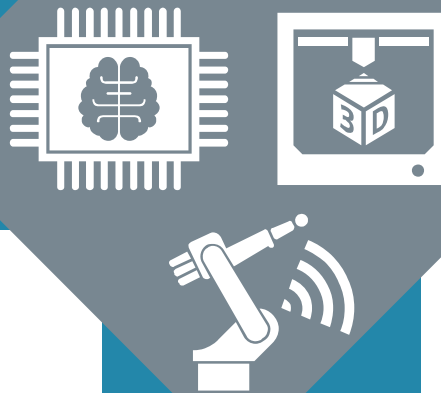
Changing the way products evolve

Ideation



System of systems

Realization



Advanced robotics

Utilization



Big data analytics

The most holistic Digital Twin

Digital Twin
Product

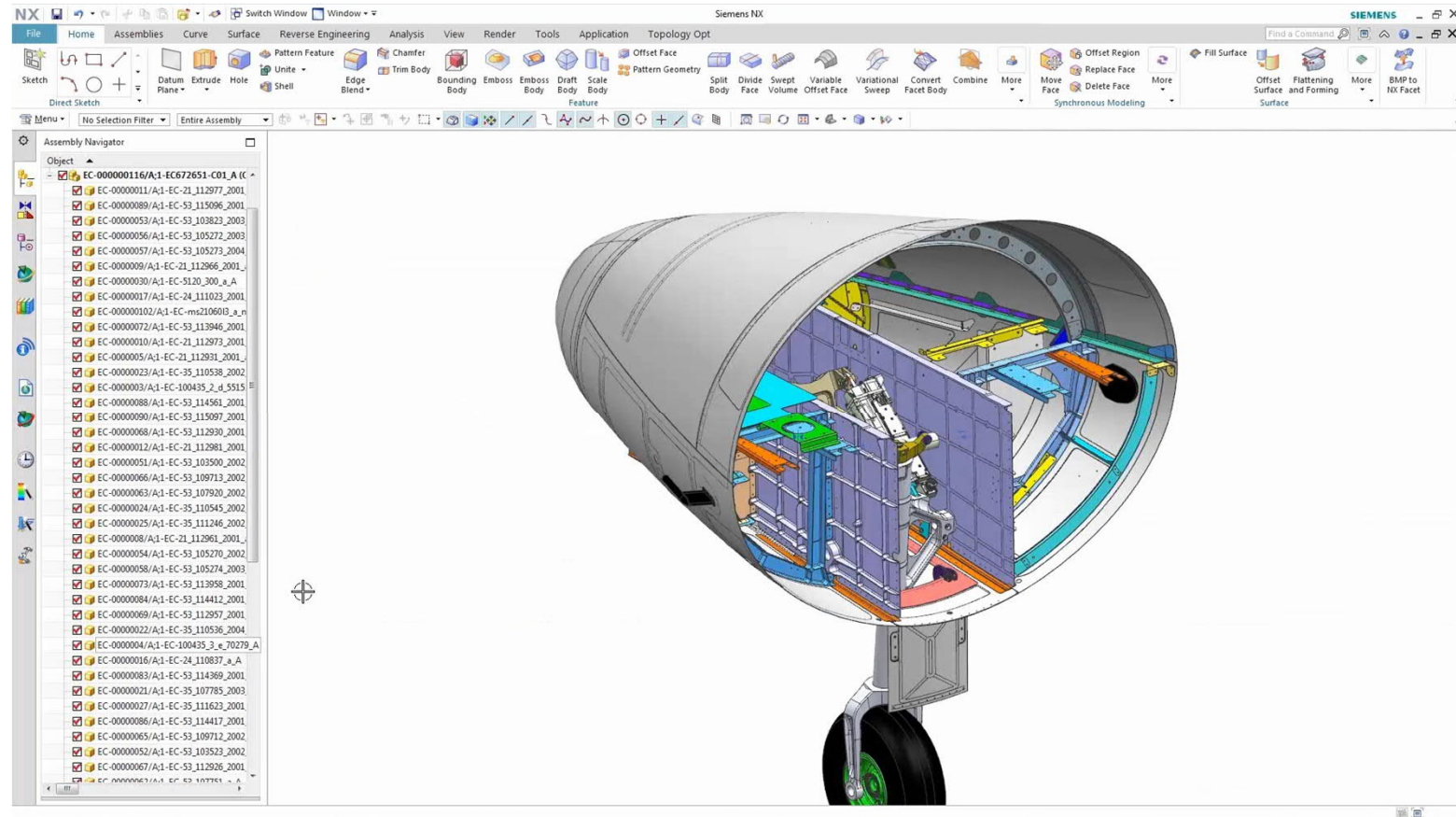
Virtual
product

Design, simulate and verify products digitally, including mechanics and multi-physics, electronics and management of software

Digital Twin Product



Design and simulate the product
NX CAD and Simcenter

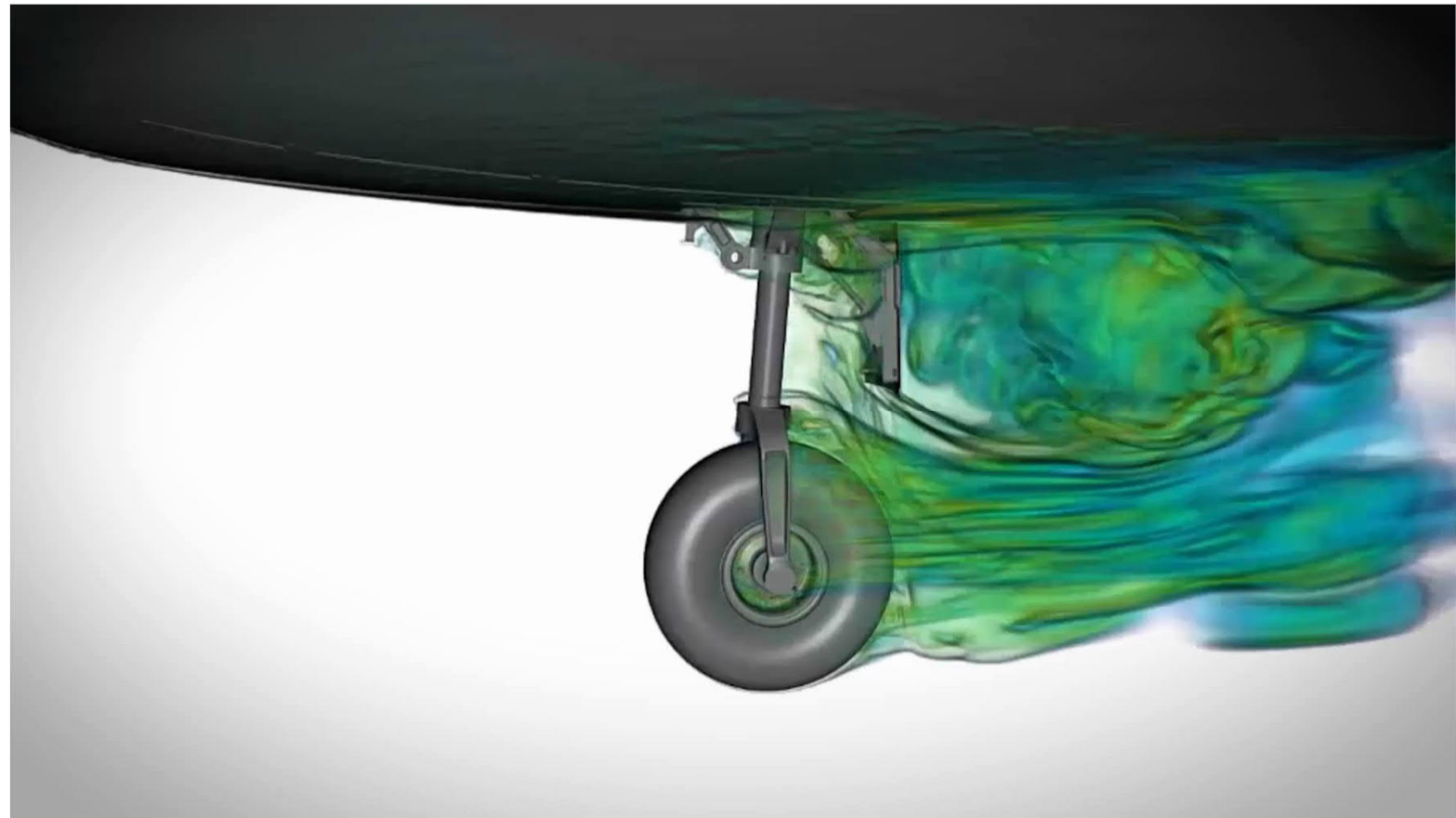


Digital Twin Product

SIEMENS
Ingenuity for life

Simulate
the physical
behavior

Simcenter

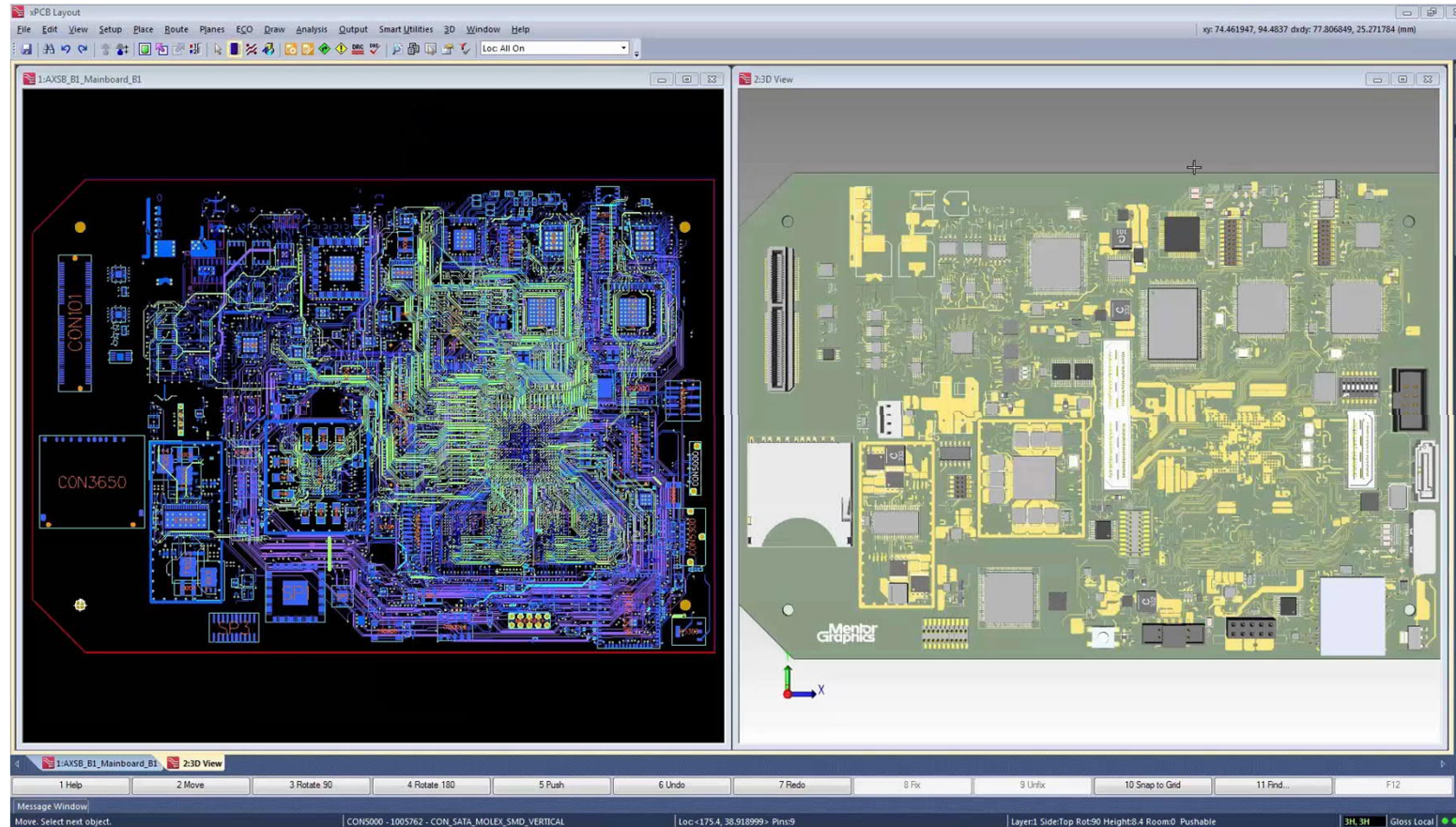


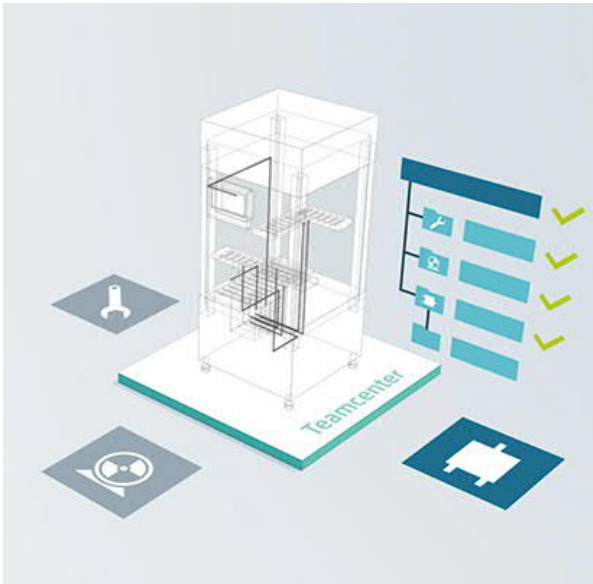
Digital Twin Product



Develop
integrated
electrical and
electronic
systems

Capital, Xpedition





Teamcenter and PLM integration

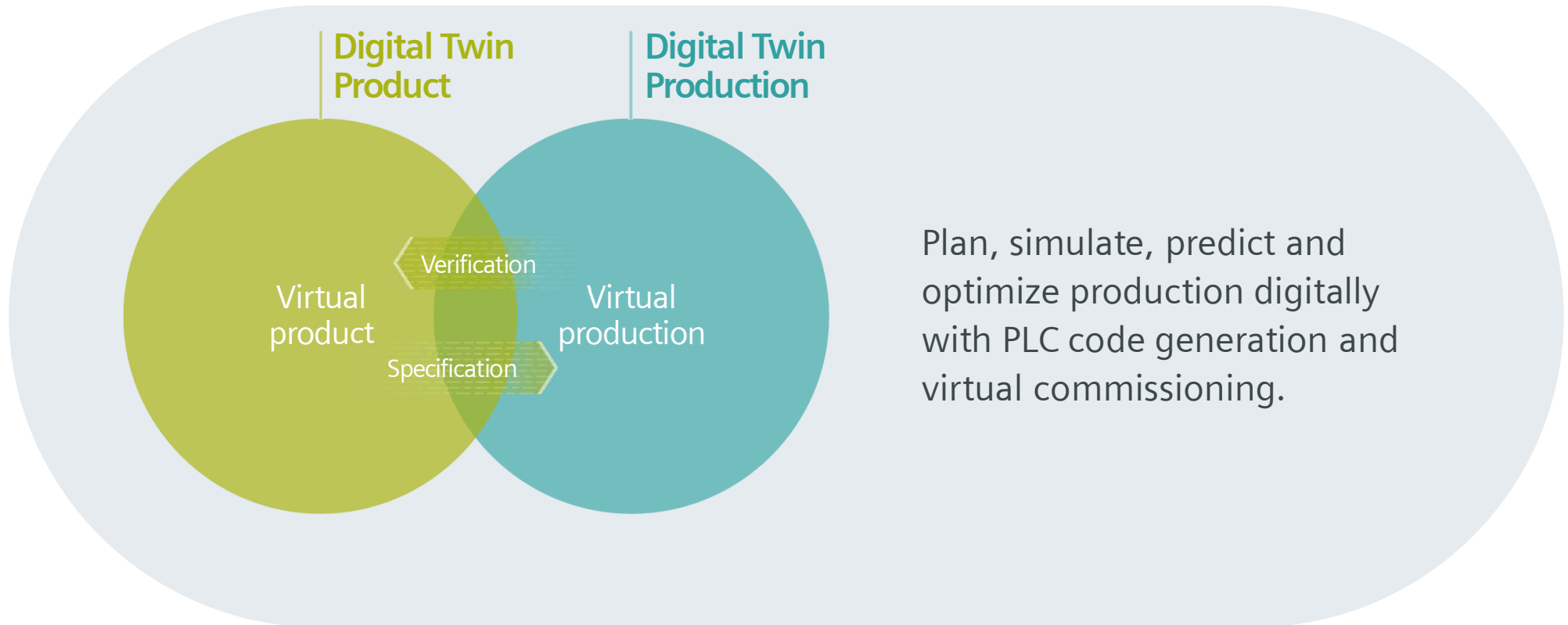
Benefits

- + No time-consuming search processes
- + Errors avoided thanks to consistent engineering data

Our offering

- TIA Portal
- Teamcenter

The most holistic Digital Twin



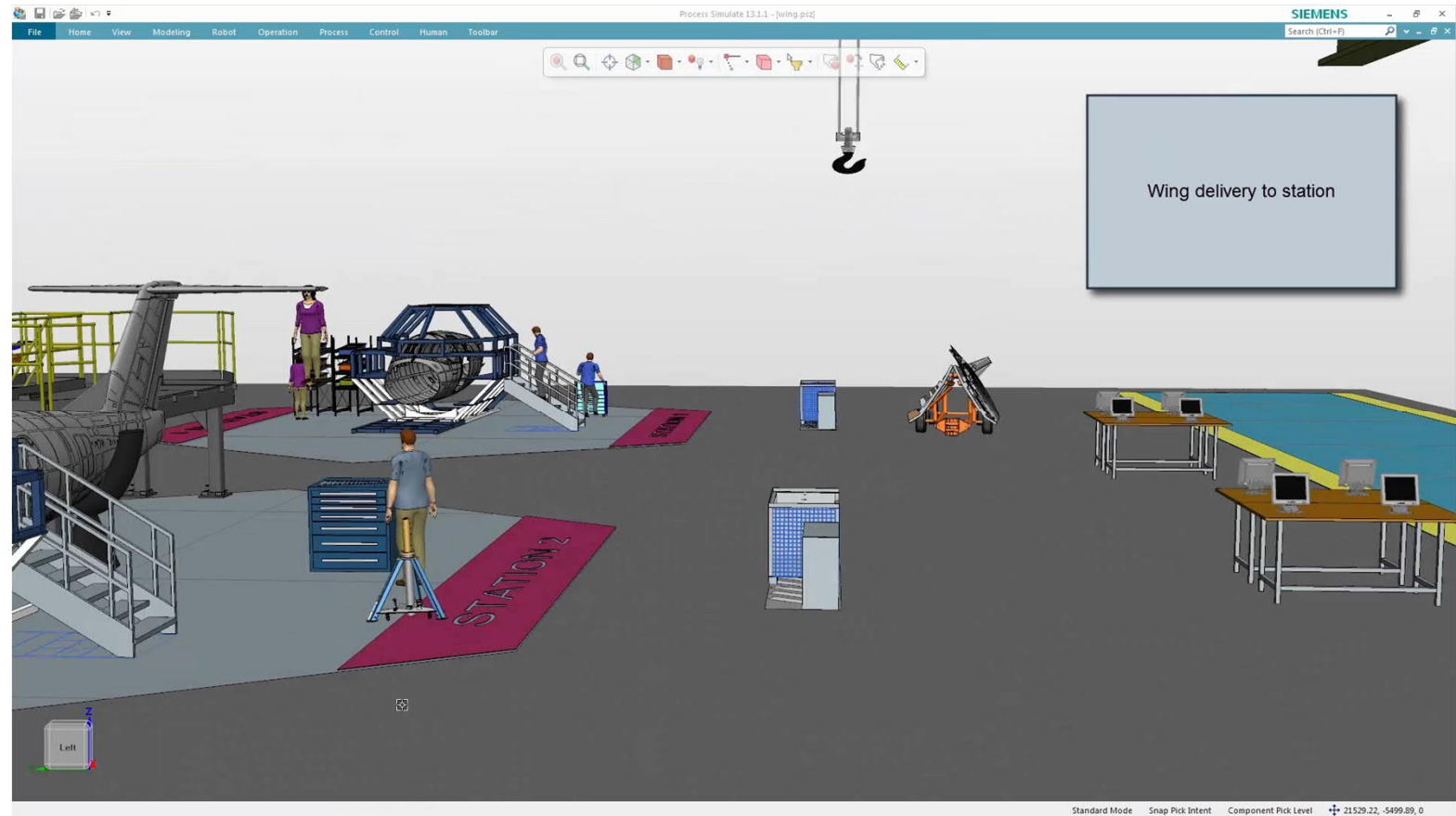
Plan, simulate, predict and optimize production digitally with PLC code generation and virtual commissioning.

Digital Twin Production



Simulate and optimize manufacturing assembly processes

Tecnomatix
Process Simulate,
Plant Simulation
Teamcenter



Digital Twin Production



Generate the PLC code in collaborative automation design

Automation Designer



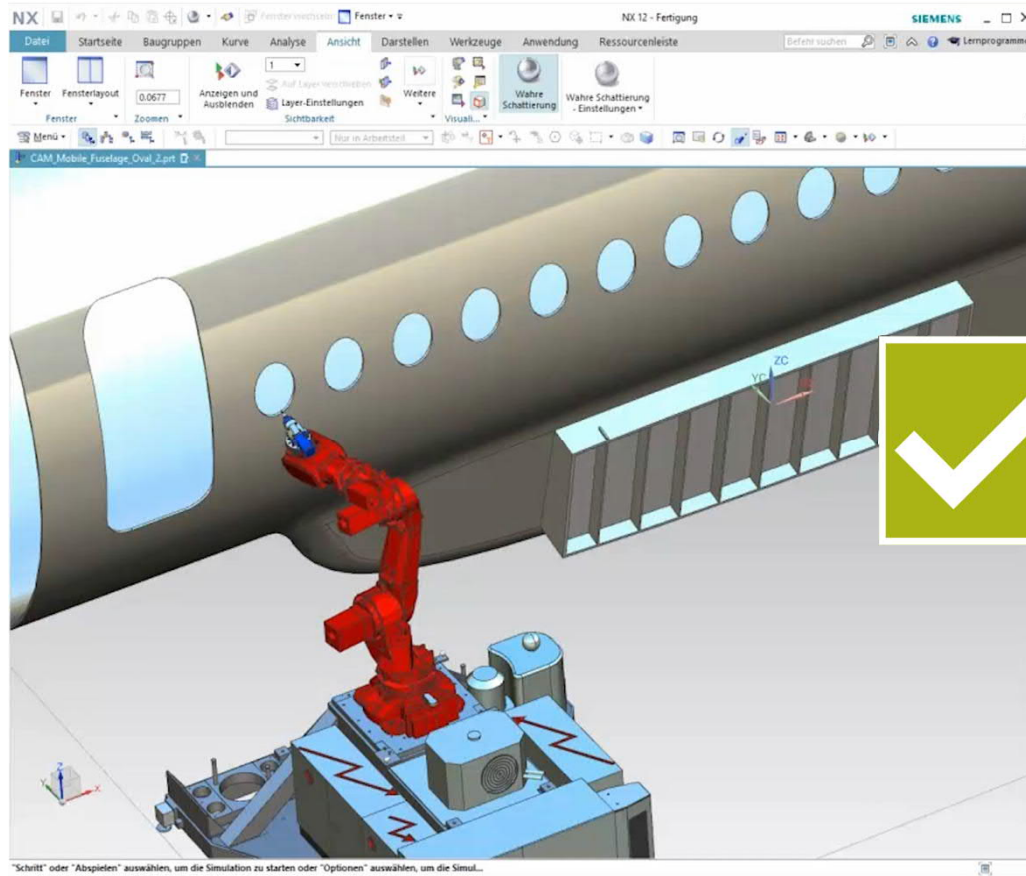
The screenshot displays the Siemens NX 12 - Automation Designer software interface. The main window shows a 3D CAD model of a robotic cell with two orange robotic arms. The interface includes a top menu bar with options like File, Home, Collaboration, Dynamic Navigation, View, Library Operations, HW Configuration, and Automation. Below the menu is a toolbar with various icons for object manipulation and configuration. On the left, the 'Function Aspect Navigator' shows a tree view of the project structure, including components like '=S01', '=H01', '=S01H01+UC01-K01', '=FC_S01H01', and '=IN01'. On the right, the 'Automation Navigator' shows a detailed view of the PLC configuration, including 'PLC Station', 'Program blocks', 'PLC tags', 'PLC data types', 'Local modules', 'Distributed I/O', and 'Field Devices'. The bottom status bar indicates the current object is 'RES_000042 in RES_000033/001;1-ROBOT1'. The Windows taskbar at the bottom shows the system clock as 6:57 PM on 3/31/2018.

Digital Twin Production

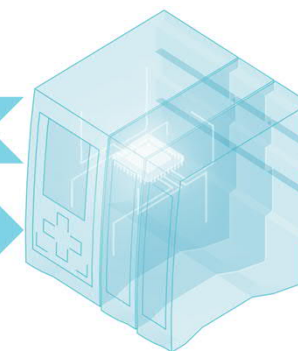


Validate the automation code in the virtual world

Mechatronics Concept Designer, SIMIT, PLCSIM Advanced, TIA Portal



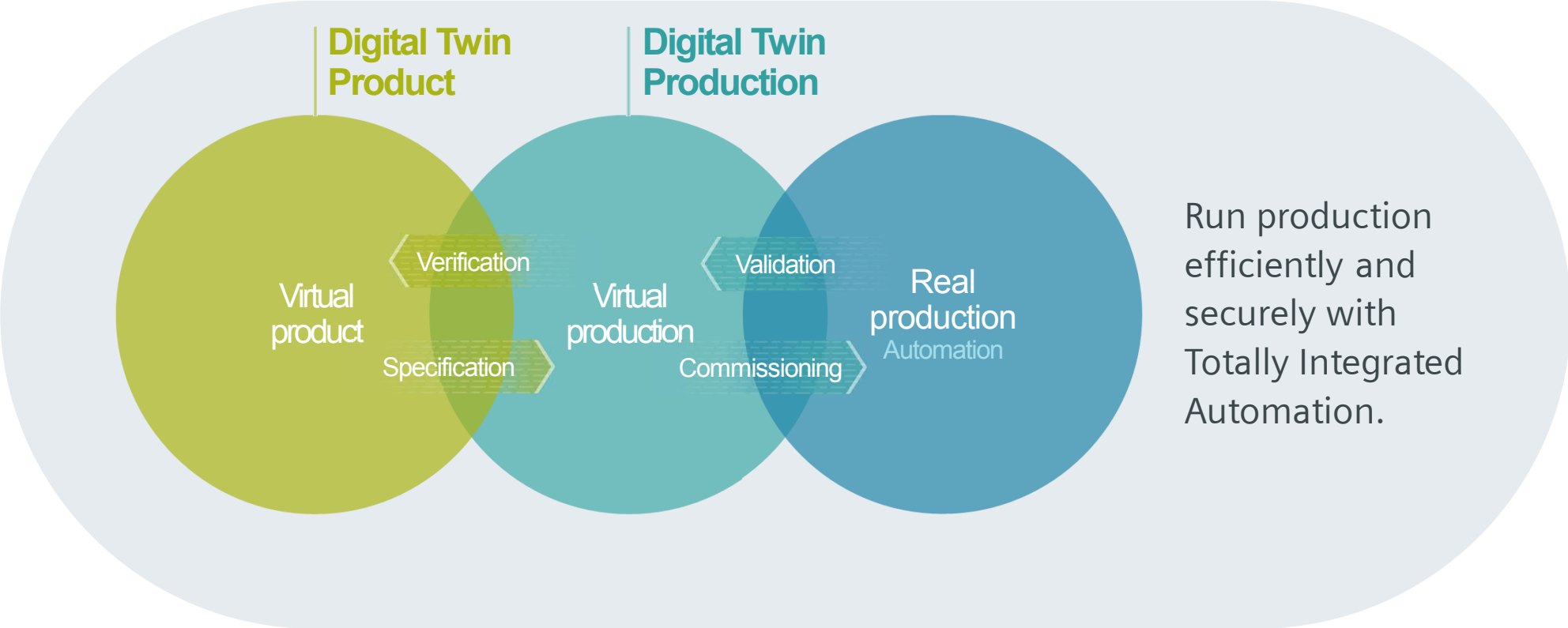
SINUMERIK 840D sl



Digital Twin of SIMATIC S7-1500

"Schritt" oder "Abspielen" auswählen, um die Simulation zu starten oder "Optionen" auswählen, um die Simul...

The most holistic Digital Twin

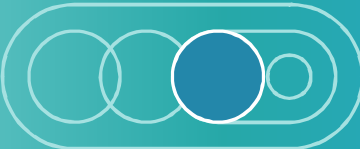


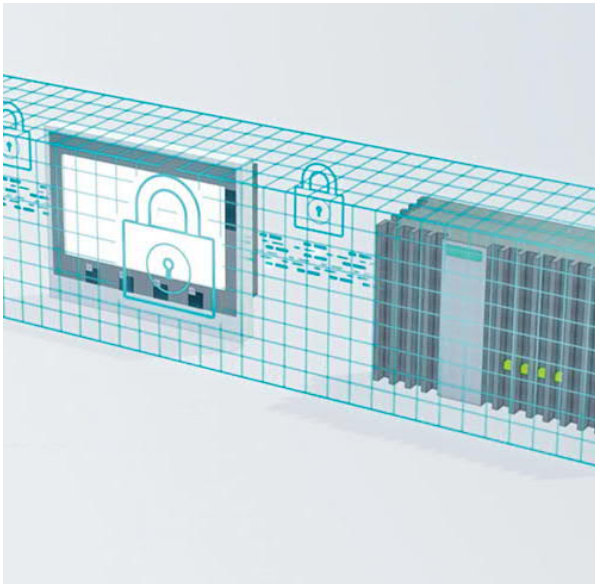
Run production efficiently and securely with Totally Integrated Automation.

Real production

Efficient
and secure
production
with TIA

SIMATIC, SINUMERIK,
SIMOTION, SIMOTICS,
SINAMICS, and SIRIUS





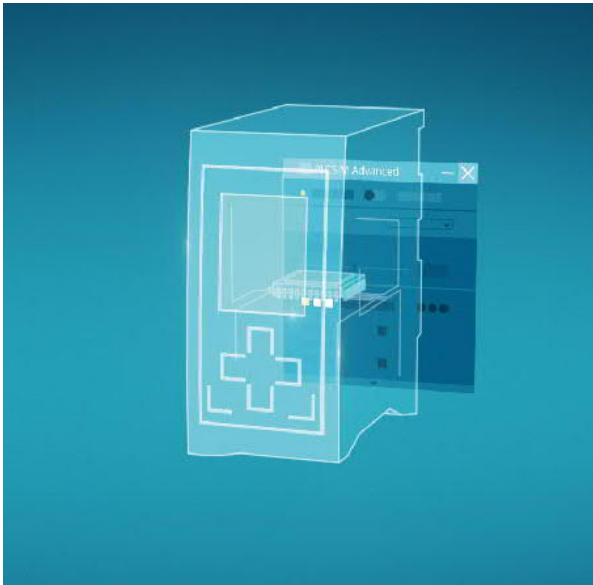
IEC 62443, the leading Industrial Security standard.

Benefits

- + Protection of productivity
- + Consistent, end-to-end security engineering
- + Comprehensive security concept

Our offering

- TIA Portal
- Industrial Security



More time in the office, fewer on-site errors

Benefits

- + 30% shorter development time thanks to parallel mechanical and automation engineering
- + Reduced error costs thanks to early detection
- + Easier to calculate costs for real commissioning

Our offering

- Virtual commissioning
- SIMATIC S7-PLCSIM Advanced
- Technomatix NX MCD
- TIA Portal



Making energy flows and energy consumption transparent

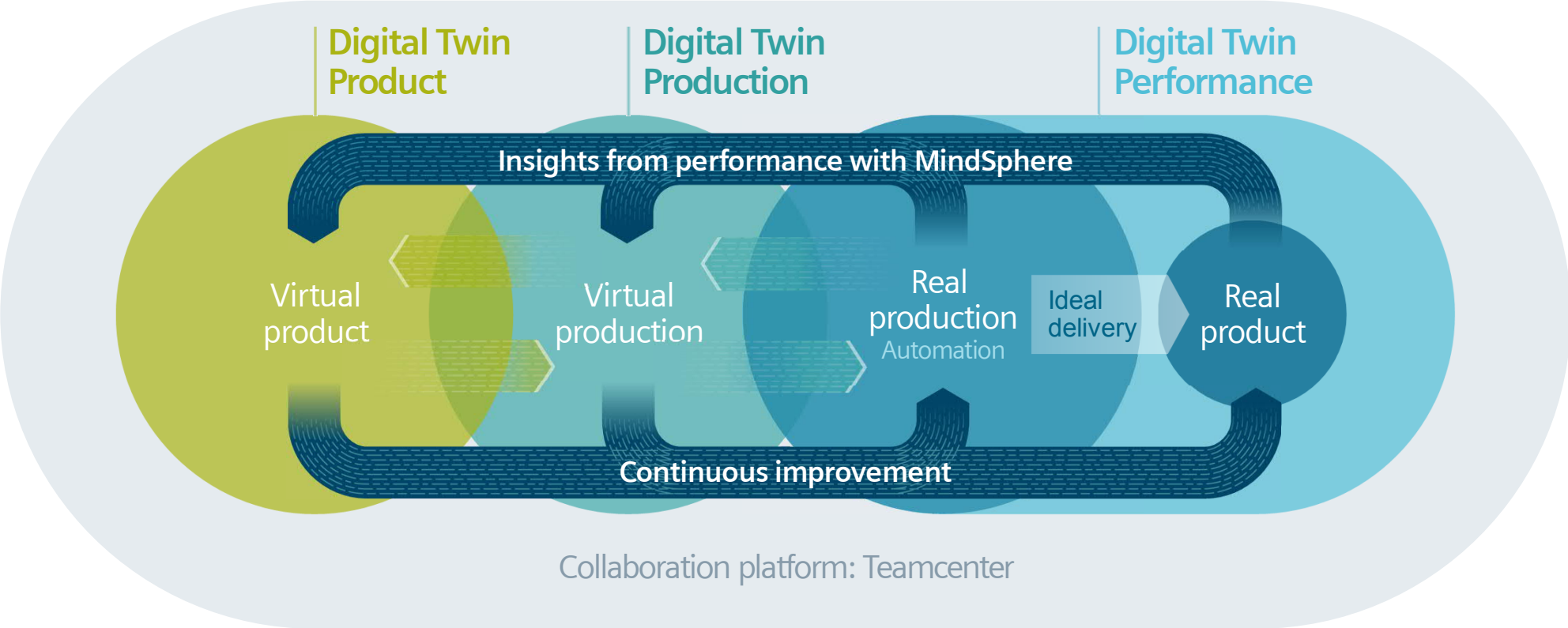
Benefits

- + In-depth energy analysis
- + Calculable energy consumption
- + Optimized production costs

Our offering

- SIMATIC Energy Suite
- SIMATIC Energy Manager PRO
- SIMATIC WinCC

Product and production improvement in the real world



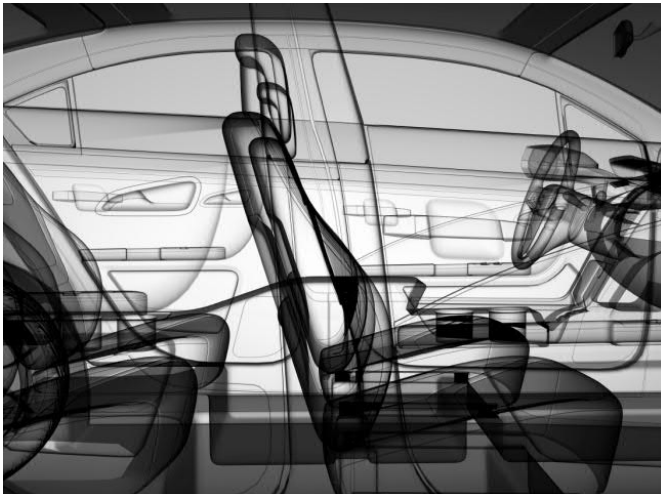
Development



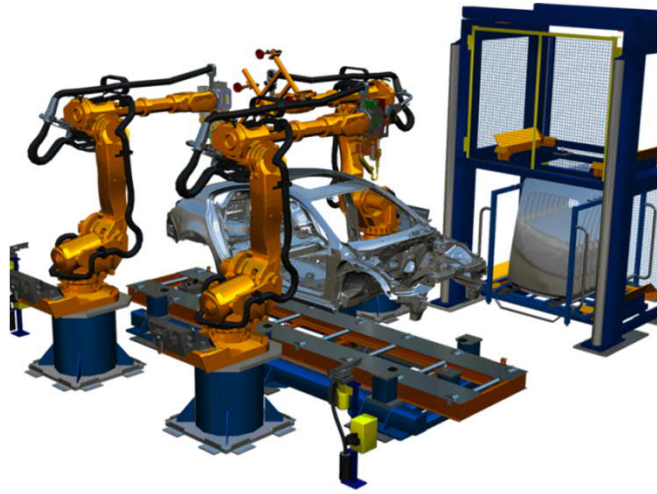
Production



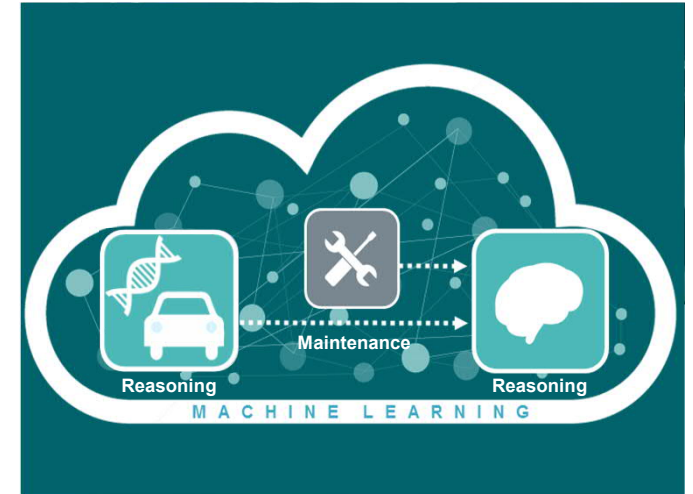
Services



Digital
Product
Twin

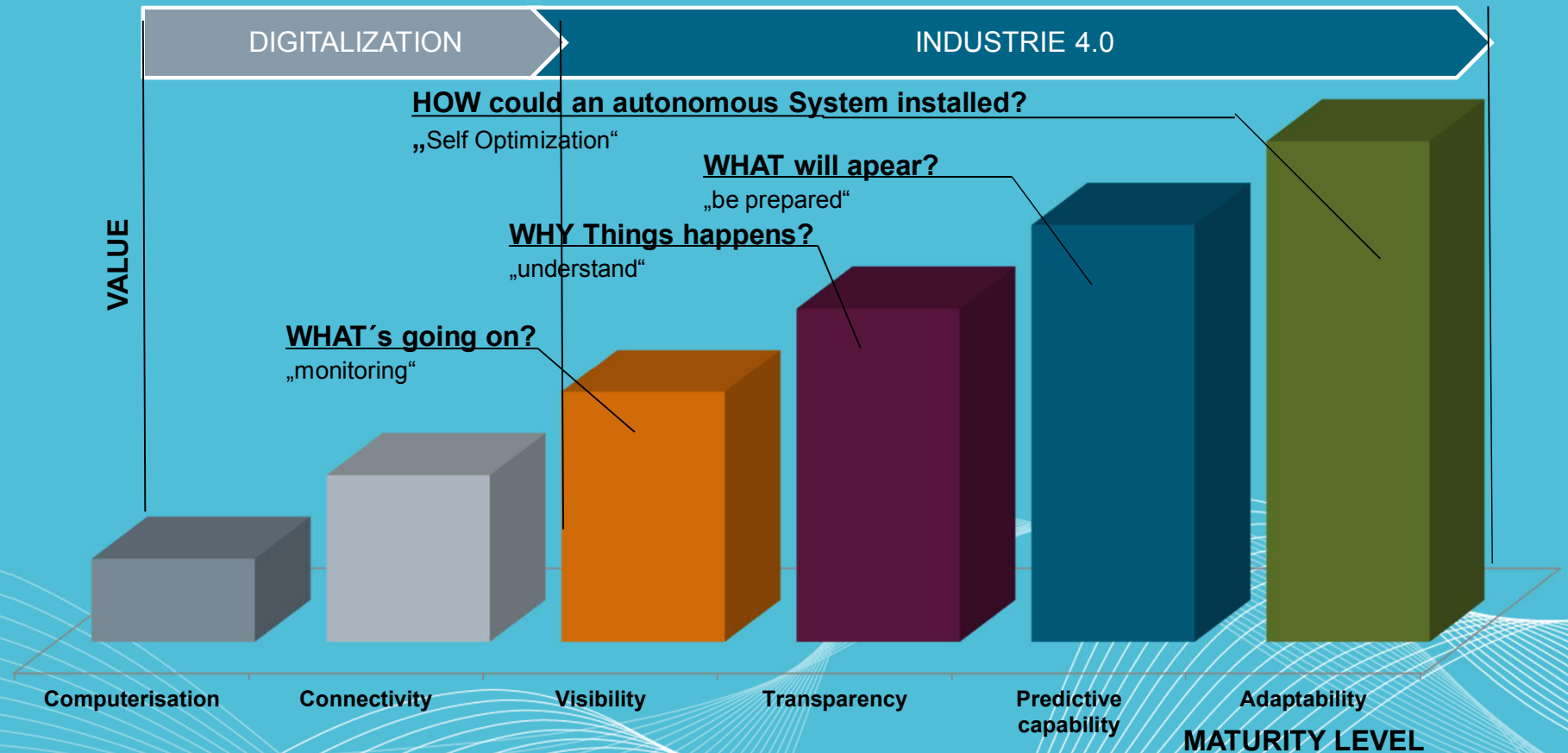


Digital
Production
Twin



Digital
Performance
Twin

Benefit-based development

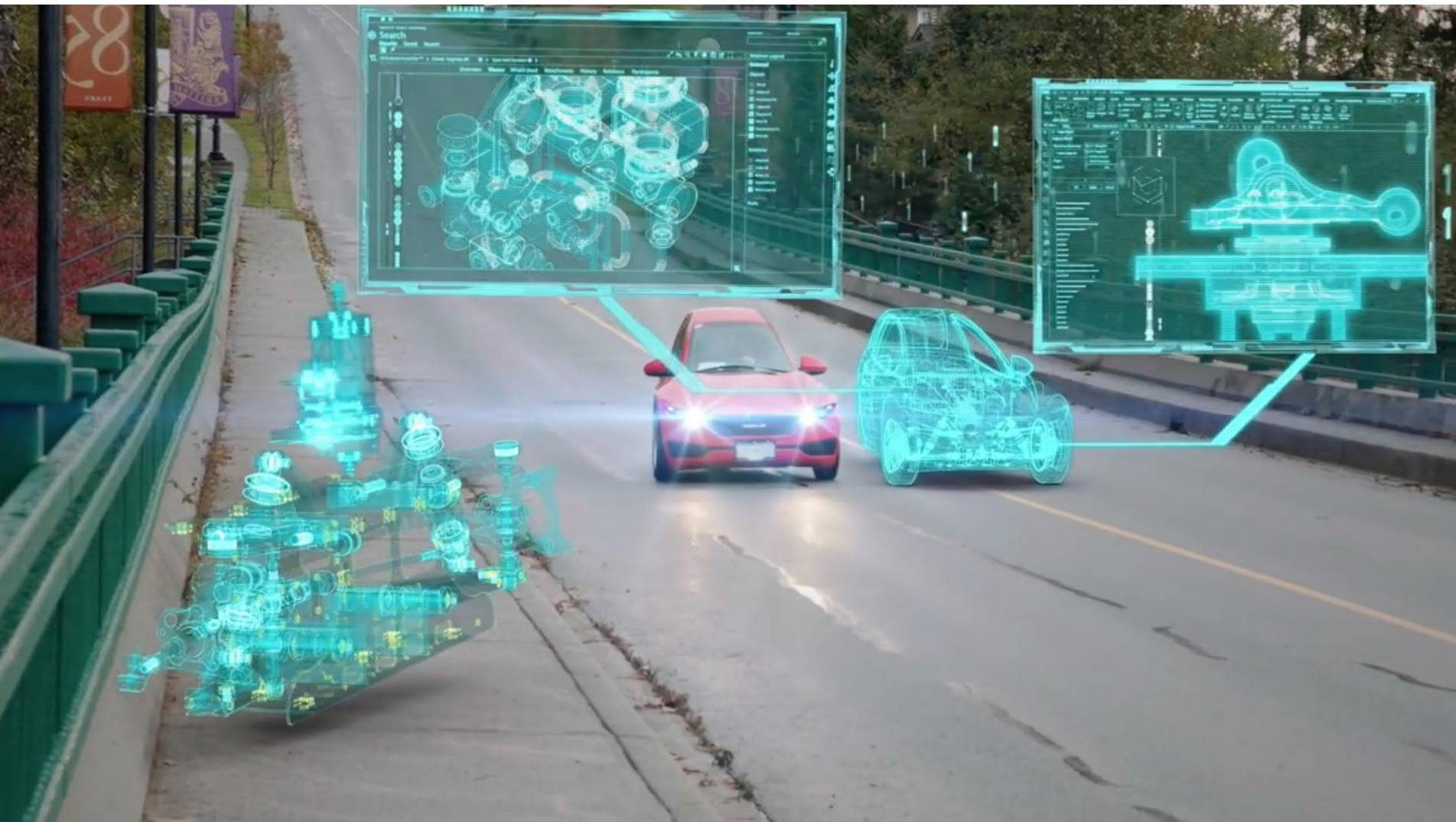


Stages in Industrie 4.0 development path (source FIR e.V. at RWTH Aachen University)

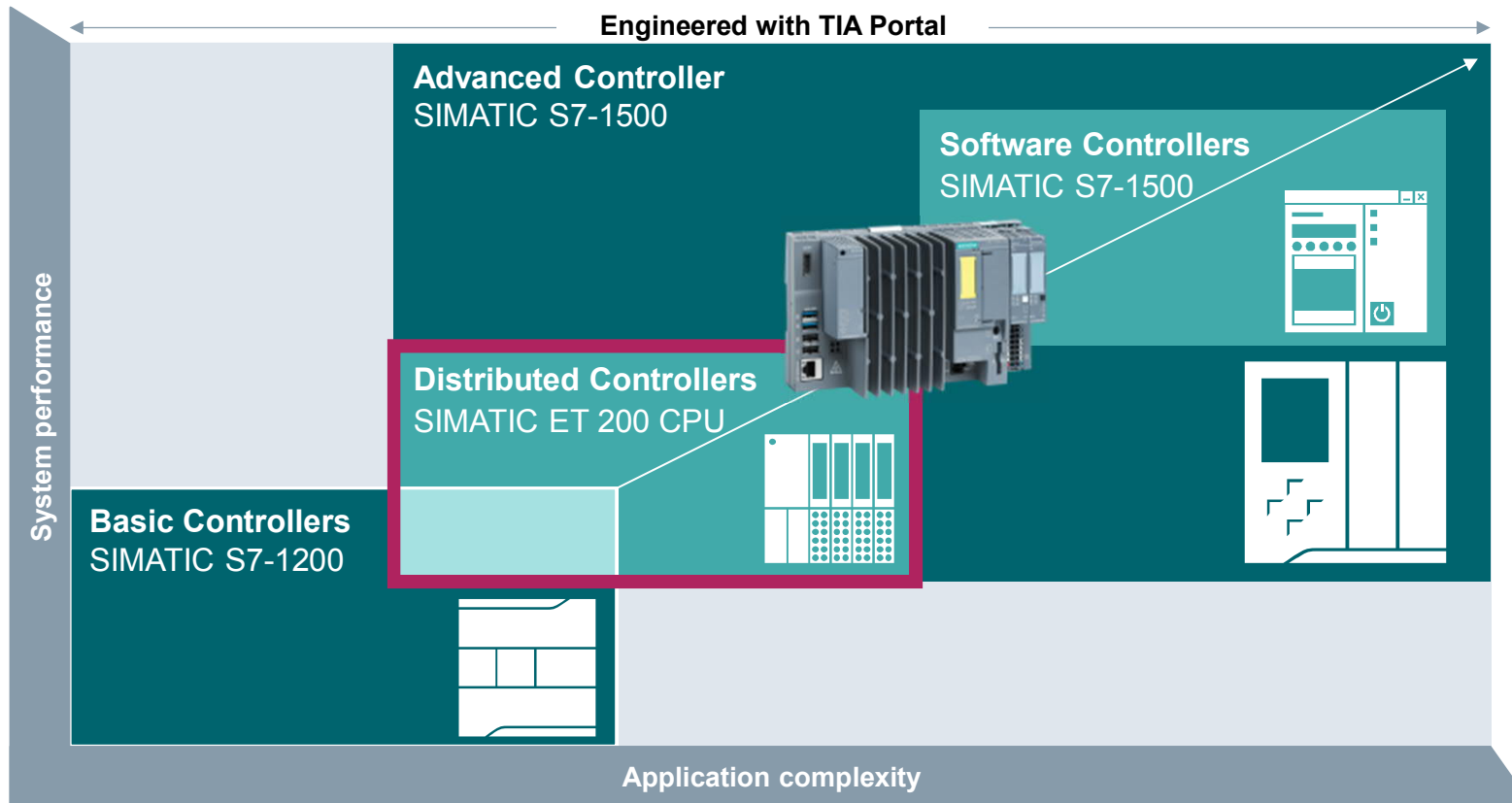
SIEMENS
Ingenuity for life

Make the
future yours.





SIMATIC ET 200SP Open Controller 2

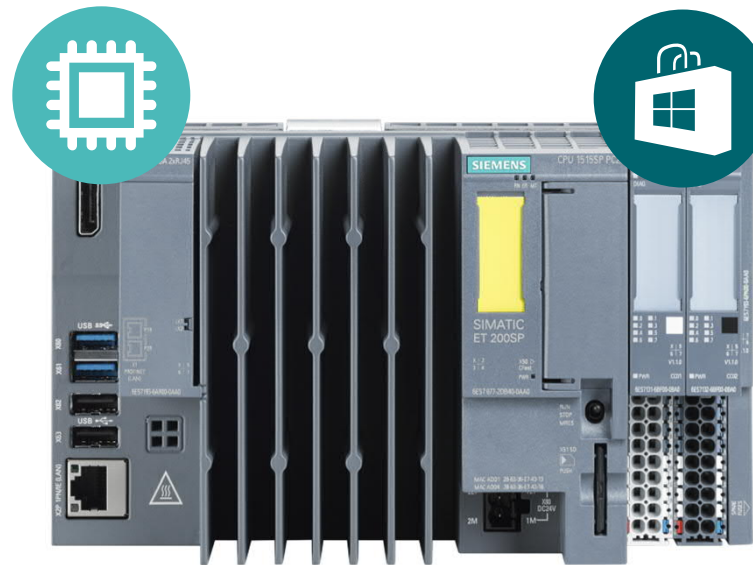


- Efficient engineering
- Innovative design
- Reliable diagnostics
- Safety Integrated
- Security Integrated
- Technology Integrated

SIMATIC ET 200SP Open Controller 2

Hardware

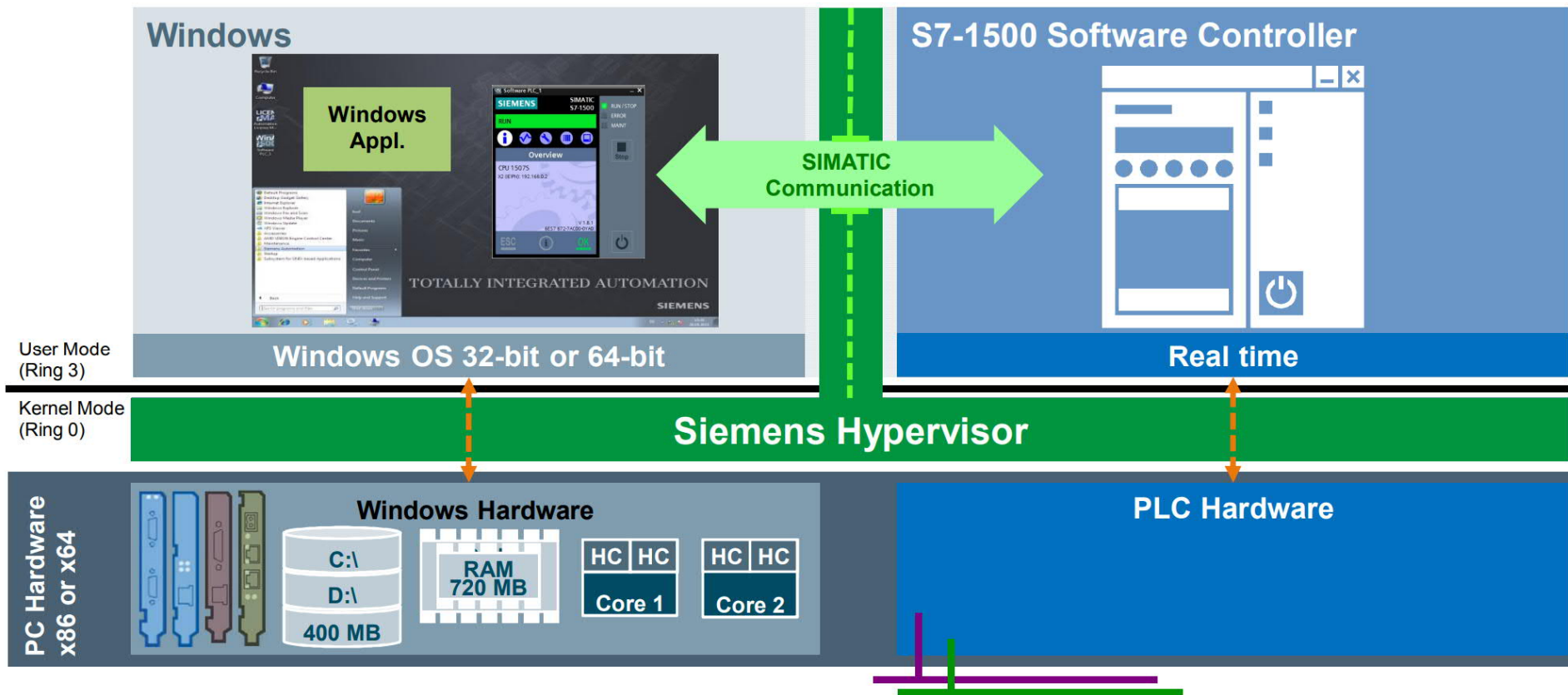
- Fanless design
- High temperature range (-20°C to 60°C)
- 8 GB RAM
- All PC interfaces onboard (DPP, USB, Gbit Ethernet)
- Exchangeable bus adapter for PROFINET IRT
- Integrated Run-Stop switch for the controller



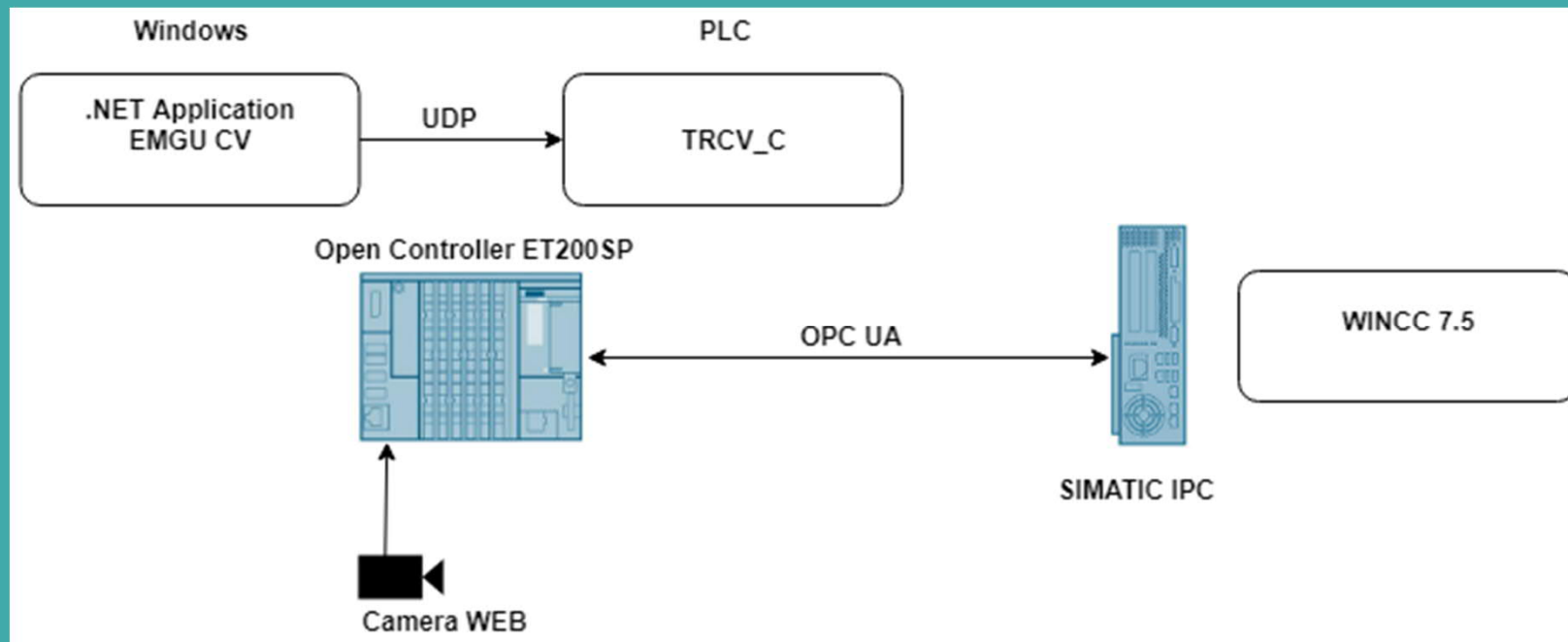
Software

- S7-1500 Software Controller already installed
- Optionally with installed WinCC RT Advanced visualization software
- Visualization also possible with multitouch functionality
- Windows 10 Enterprise 2016 LTSC 64 bit
- Restore via USB stick

SIMATIC ET 200SP Open Controller 2



SIMATIC ET 200SP Open Controller 2 – Application



Provider (data source)

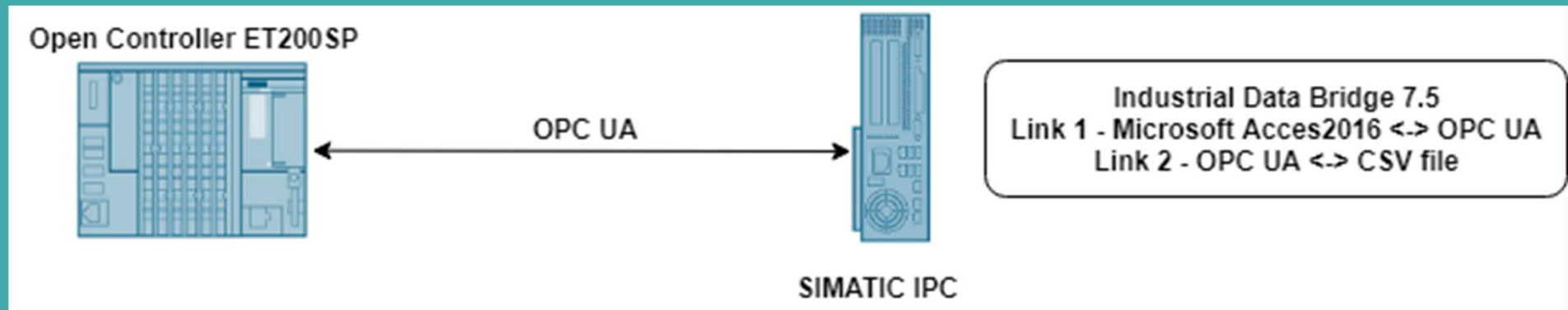
- ✓ MS Access 2003, 2007, 2010, 2013, 2016
- ✓ MS SQL Server 2005, 2008, 2008R2, 2012, 2014, 2016
- ✓ MySQL 3.5, 5.1.5.5, 5.6, 5.7
- ✓ Oracle 8i, 10g, 11g, 12c
- ✓ OPC Data Access 3.0
- ✓ OPC XML 1.01
- ✓ Send / Receive
- ✓ WinCC OLE DB 7.2, 7.3, 7.4, 7.4 SP1, 7.5
- ✓ WinCC UserArchive 7.2, 7.3, 7.4, 7.4 SP1, 7.5
- ✓ WinCC RT Prof.V13 SP1, V13 SP2, V14 SP1, V15
- ✓ OPC UA DA (1.0.3) Client

Industrial Data Bridge

Consumer (data target)

- ✓ CSV, TXT
- ✓ MS Access 2003, 2007, 2010, 2013, 2016
- ✓ MS SQL Server 2005, 2008, 2008R2, 2012, 2014, 2016
- ✓ MySQL 3.5, 5.1.5.5, 5.6.5.7
- ✓ Oracle 8i, 10g, 11g, 12c
- ✓ MS Excel 2003, 2007, 2010, 2013, 2016
- ✓ OPC Data Access 3.0
- ✓ OPC XML 1.01
- ✓ IDB OPC Server 7.5
- ✓ Send / Receive
- ✓ WinCC UserArchive 7.2, 7.3, 7.4, 7.4 SP1, 7.5
- ✓ Configurable TXT / HTML / XML
- ✓ WinCC RT Prof. V13 SP1, V13 SP2, V14 SP1 , V15
- ✓ OPC UA DA (1.0.3) Server (including status messages)

WinCC / Industrial Data Bridge



SIEMENS
Ingenuity for life

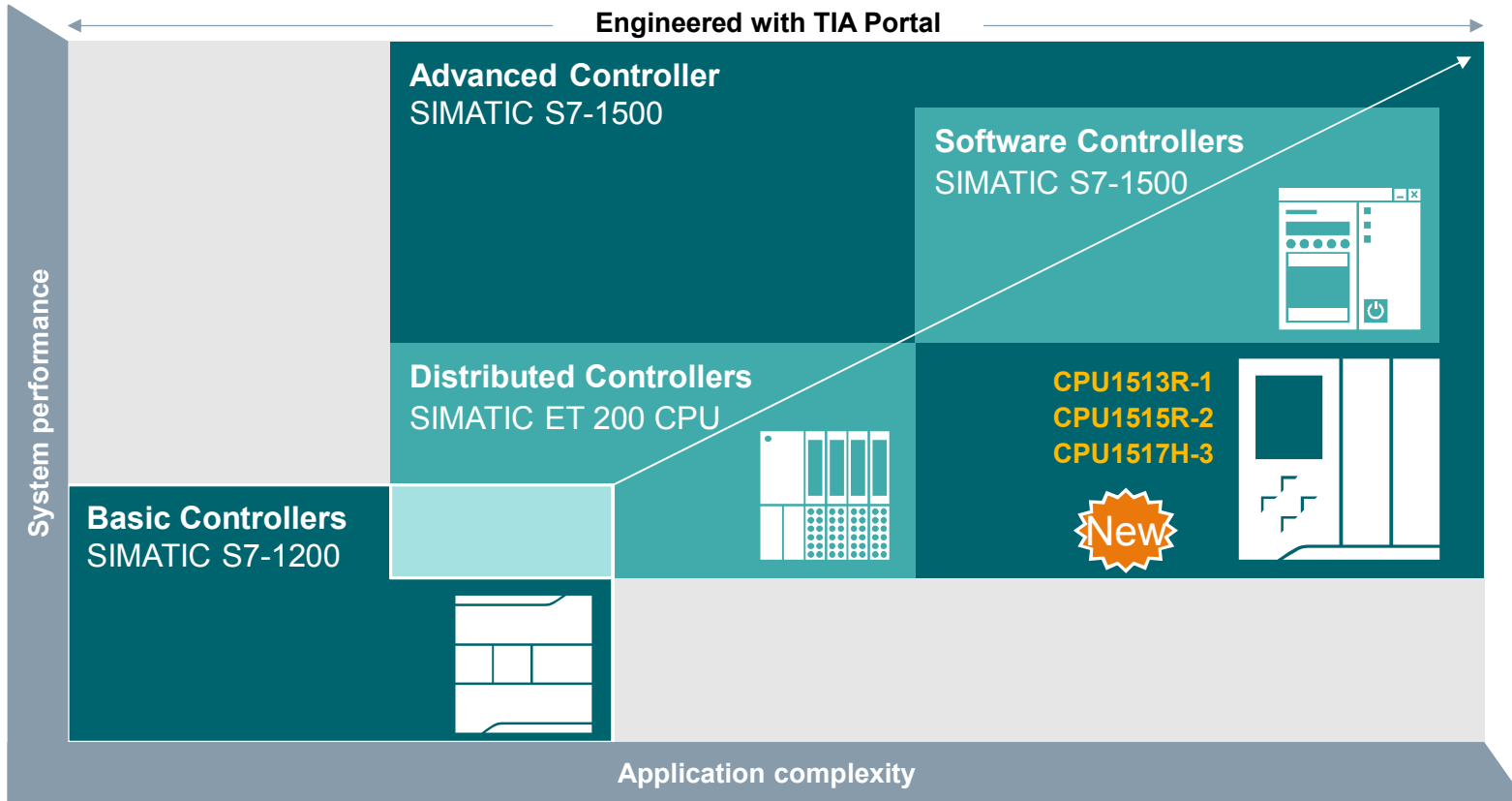


Engineered with TIA Portal

SIMATIC S7-1500 Redundant Systems

Unrestricted © Siemens AG 2018

siemens.de/S7-1500



Efficient Engineering

Innovative Design

Reliable Diagnosis

Safety Integrated

Security Integrated

Technology Integrated

SIMATIC S7-1500 Redundant systems



Consistent concept –
Identical synchronization
process

Scaling of the switching
performance over the **available
bandwidth** of the
sync connection

CPU type

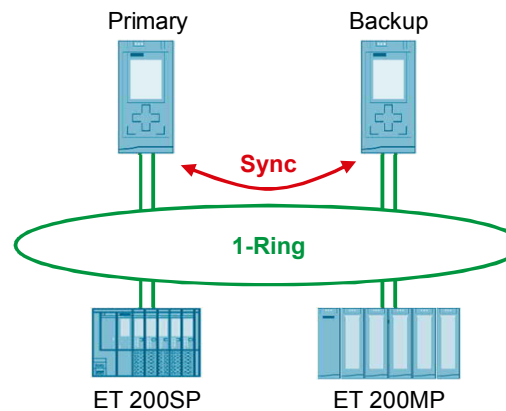
Synchronization

Switchover time

I/O systems

Type of connection

Redundant – S7-1500R



CPU 1513R/CPU 1515R

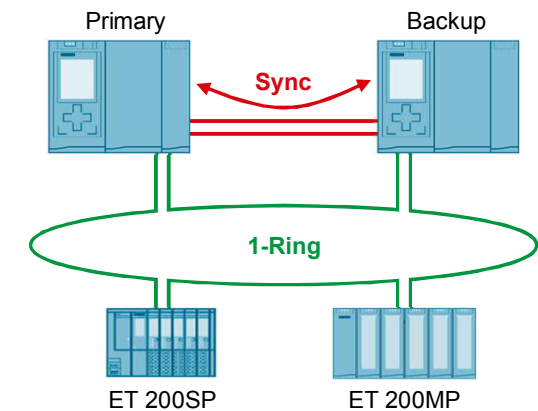
via **PROFINET Ring (MRP)**

200 – 500ms

ET 200SP and ET 200MP

Single connection (PN redundancy S2)

High available – S7-1500H



CPU 1517H

via **Sync-Module**

<100ms

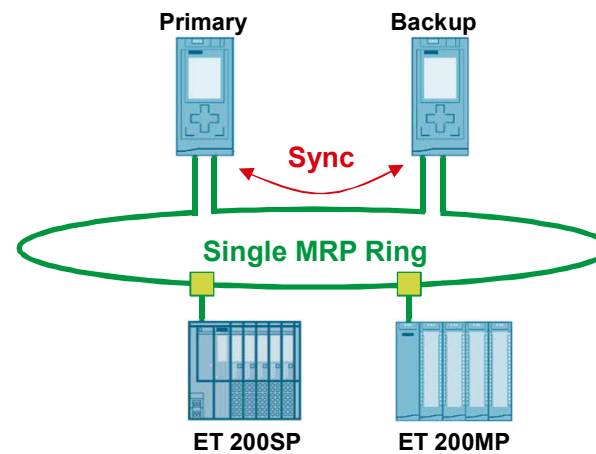
ET 200SP and ET 200MP

Single connection (PN redundancy S2)

Requirements for the PROFINET network configuration

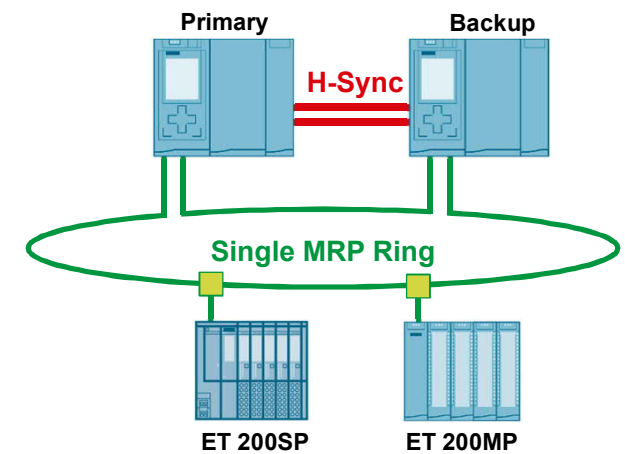
- MRP Ring (default setting in the configuration)
- PLC's need to be part of the ring

Redundant 1500R



Max. 16 devices in ring^{*)}

High Available 1500H



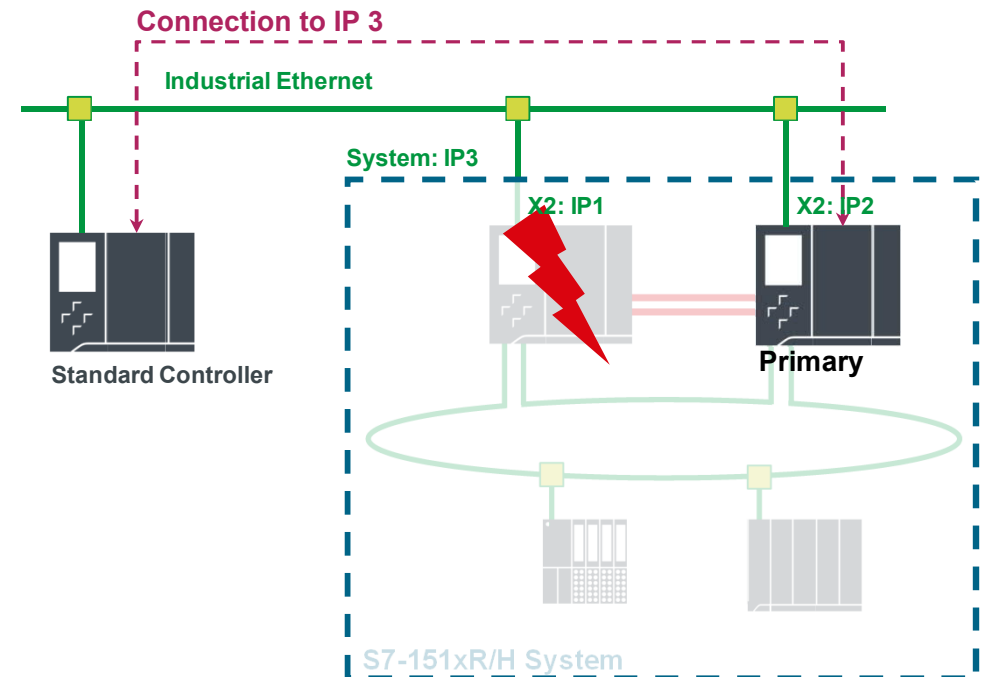
Max. 50 devices in ring^{*)}

^{*)} Recommendation

Communication System IP-Address – Switching Primary

Using System IP instead of PLC interface IP

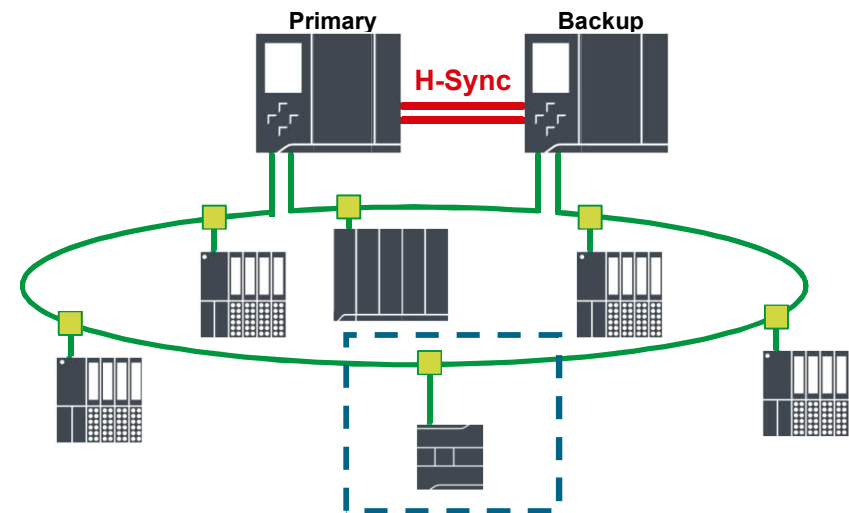
- Transparent communication between standard PLC and R/H-System
- The standard communication partner is automatically connected to the primary PLC



Communication System IP-Address in the PN-MRP-Ring

Include Standard Controllers in the MRP Ring

- The S7-1500R/H does not support Single PN Devices (S1) or iDevices.
- Nevertheless, it is possible to physically include a S7-1500/1200 per Switch or directly into the MRP Ring, to communicate to the H-System via OUC.



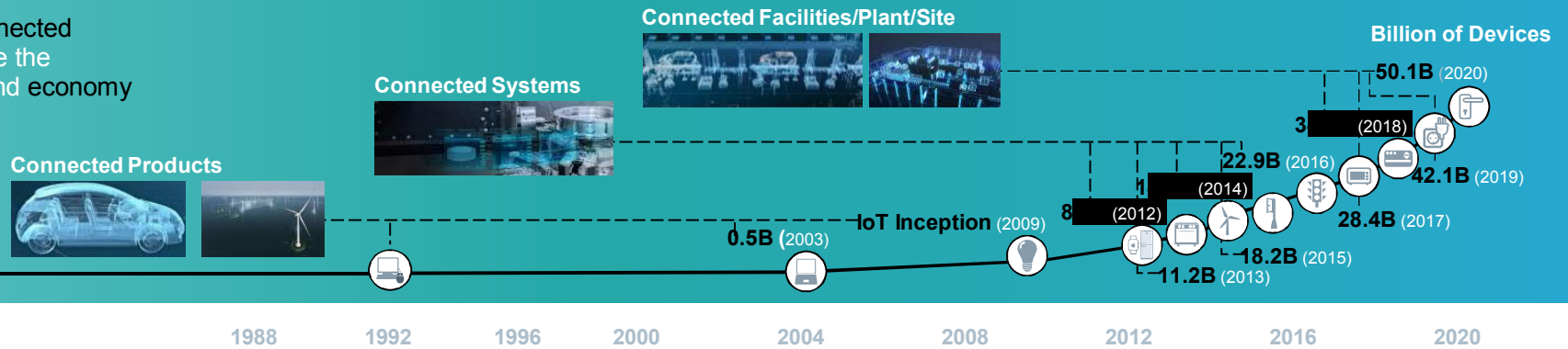
Digitalization creates opportunities and risks

Digitalization creates ...



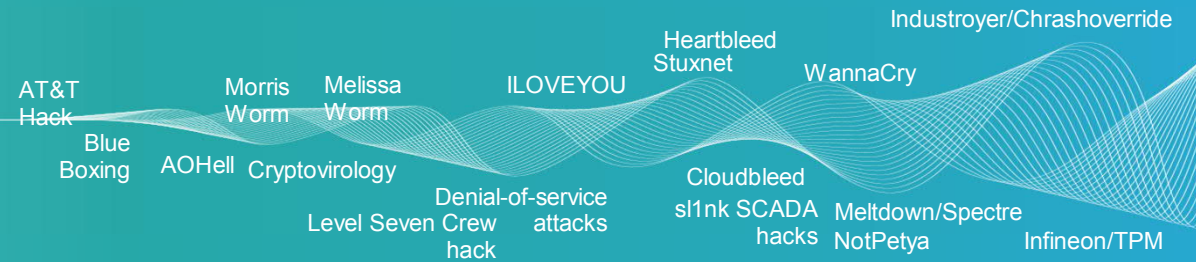
Opportunities

Billions of devices are being connected by the Internet of Things, and are the backbone of our infrastructure and economy



... and risks

Exposure to malicious cyber attacks is also growing dramatically, putting our lives and the stability of our society at risk



The background of the entire page is a panoramic view of the London skyline, featuring the Shard skyscraper on the left and St. Paul's Cathedral on the right, with the River Thames in the foreground. Overlaid on the top half of the image is a teal-colored data visualization consisting of a grid of squares and a line graph with several data points connected by lines. The Siemens logo and tagline are positioned in the top right corner.

SIEMENS
Ingenuity for life

MindSphere

The cloud-based, open IoT operating system

www.siemens.com/mindsphere

Why now?

85%



of potential assets remain unconnected.

Technology and Innovation for the Future of Production: Accelerating Value Creation
World Economic Forum, Mar 2017

64%



of respondents are either engaged in or planning an IIoT project in the next year.

Technology and Innovation for the Future of Production: Accelerating Value Creation
World Economic Forum, Mar 2017

It is the beginning of the era of digitalization

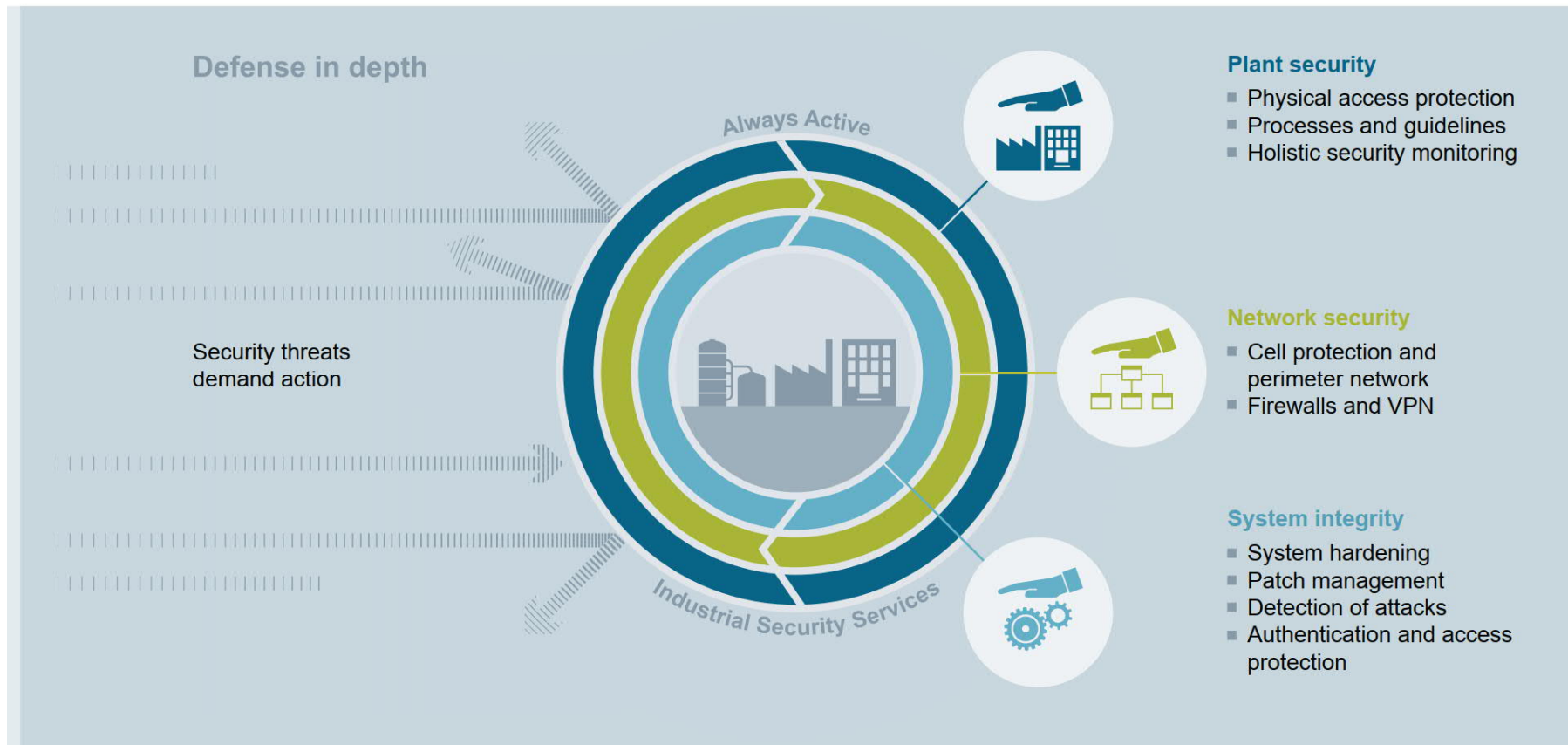
- Few organizations are currently realizing the full value of the IIoT, but it's only a matter of time

Early adopters receive the biggest gains

- Opportunity to proactively build major competitive advantages

More than half the market is investing in the IIoT

- Become industry leader with optimized processes





SCALANCE SC63x-2C

This high-performance industrial firewall appliance offers the following benefits:

- Cell protection via firewall – also configurable on a user-specific basis – with 600 Mbit/s and up to 1,000 firewall rules
- Bridge firewall for the protection of flat networks
- NAT/NAPT for communicating with serial machines with identical IP addresses
- Secured remote access via SINEMA Remote Connect
- Fiber optics for long distances (up to 200 km)
- Digital input for local activation of secured remote access
- Digital signal output via signal contact
- Console port for direct access via programming device
- Redundant 24 V DC power supply
- Versatile installation options for fast and reliable mounting
- Compact design with metal rear panel
- Simple device replacement using C-PLUG replacement medium for automatically saving configuration and engineering data
- Integration in redundant network structures by means of VRRPv3 and, with SCALANCE SC636-2C, additionally by means of MRP

SIMATIC IOT2040

SIEMENS
Ingenuity for life



SIMATIC quality – 24/7 operation

Expandability and connectivity

mPCIe, various standard interfaces and available protocol drivers

Performance and Deterministic

Intel Quark® CPU and 1 GB RAM

Openness

Free programmable in high-level languages

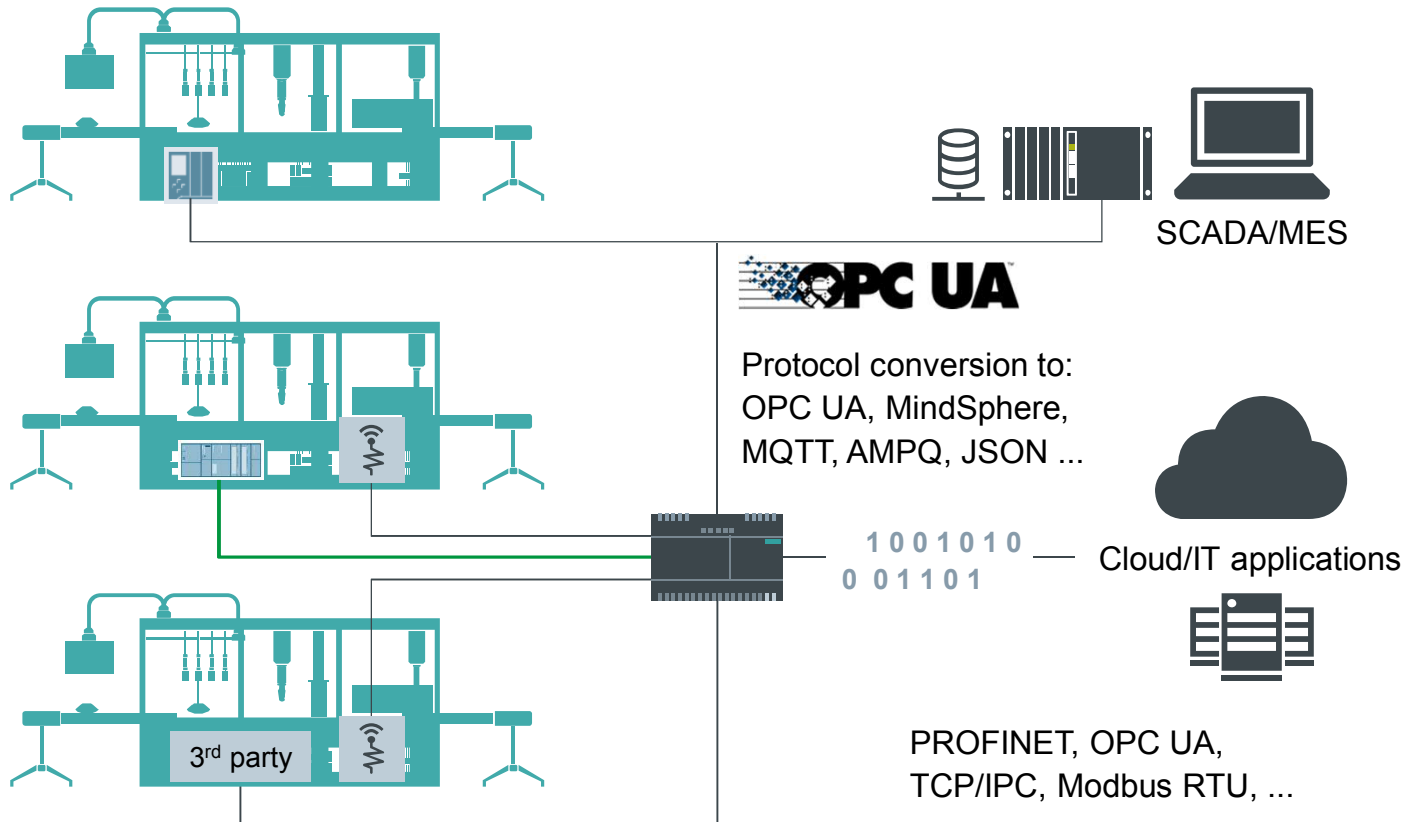
Automation.ConnecTed

Easy connection to automation level with PROFINET



SIMATIC IOT2040

SIEMENS
Ingenuity for life

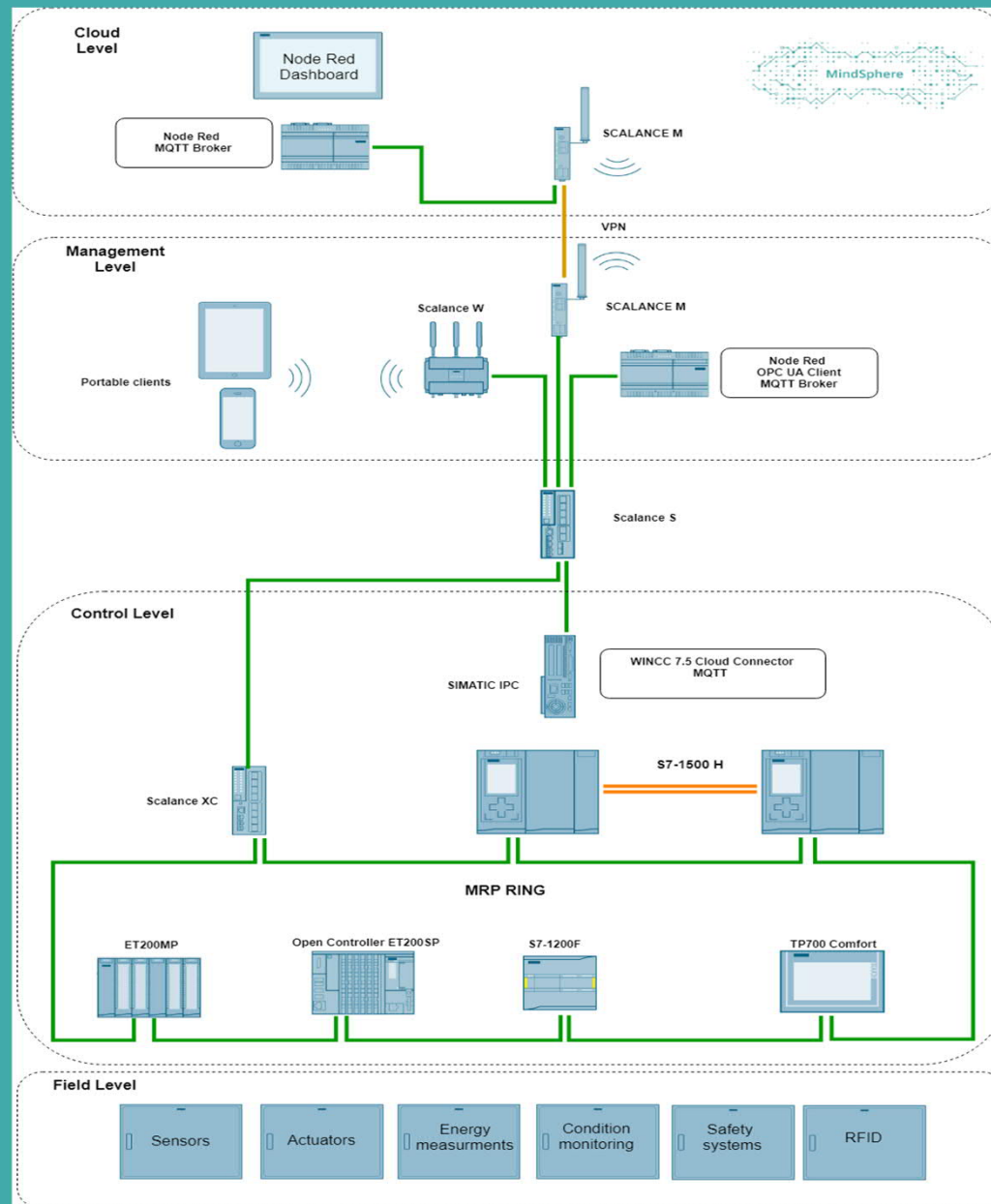


- Inter-connecting various sources
- Pre-processing/data acquisition with SIMATIC IOT2040
- Data transfer to company network or direct to cloud applications
- Use existing automation solution

SIMATIC IOT2040 complements automation portfolio

SIMATIC IOT2040 as cost-efficient and open data gateway for retrofitting existing concepts and make them "IoT ready"

Cloud Application



Future of Automation

Thought leadership

