

WHEREVER  
SERVICES  
ARE  
PRODUCED

# Windesk.fm CAFM Computer Aided Facility Management

Signumtte

01

02

Maintenance Management  
CMMS



03

04

BMS and Energy  
Management



05

06

Thank you

07



Windesk.fm CAFM



Soft Facilities  
Management



Workspace  
Management

WHEREVER  
SERVICES  
ARE  
PRODUCED

01\_  
signumtte

# Signumtte Profile

## Signum Technology

- 51% is the ARD Group Holding and 49% is the affiliate of Kontrolmatik Teknoloji
- Dedicated company to the excellence of operational process business
- R&D company, develops innovative software solutions to add new value to its customers
- Our main focus is the integrated workplace and facility management business domain
- Developing windesk.fm CAFM Platform for Facility marketplace
- Involved in 7 active PPP Projects of big City Hospital in Turkey – market leader
- Chosen provider for CMMS solutions at the Istanbul Financial Center, global financial services hub of Turkey

## signumtte: Some of Our References

### Health Group

**CCN HOLDİNG**  
CONSTRUCTION & CONCESSION NEXUS

- Mersin City Hospital
- Ankara City Hospital
- Ministry of Health

 **akfen**

- Isparta City Hospital
- Eskişehir City Hospital
- Tekirdağ City Hospital

 **RÖNESANS HOLDİNG**

Gaziantep City  
Hospital

 **GÜRİŞ**

Kutahya City  
Hospital

### Other Sector

 **iSTANBUL**  
FINANS MERKEZİ

**GALATAPORT**

 **bilesim**

**ICA**

**TETRA** 

 **ARDGRUP**  **Kontrolmatik  
Technologies**

**signumtte**

# signumtte: Our Business and Technology Partners

## Our Business Partners



## Our Technology Partners



WHEREVER  
SERVICES  
ARE  
PRODUCED

02\_

## windesk.fm CAFM Computer Aided Facility Management Software

# windesk.fm CAFM Vertical Applications

windesk.fm

## Computerized Maintenance Management System – CMMS

IoT Supported Digital Asset and Maintenance Management System

windesk.fm

## Soft Facilities Services

IoT Supported Field Support Services Management System



windesk.fm

## Workplace Management

Common Area - Rental Management System

windesk.fm

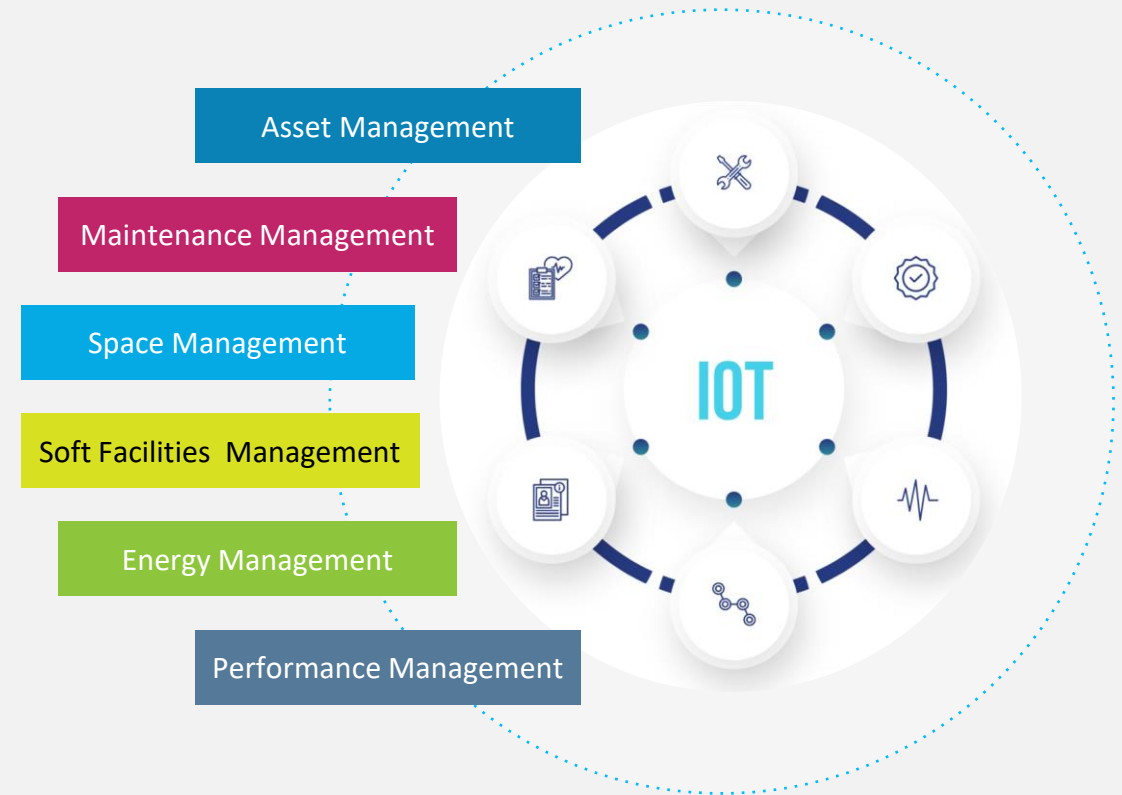
## BMS & IoT Integrations

AI, ML Supported Facility Performance and Risk Management System

Multiple Products on a Single Platform

## windesk.fm CAFM Platform

**windesk.fm** is a comprehensive **Computer Aided Facility Management** Solution addressing these challenges by leveraging technology, **data-driven** insights, and best practices in facility management to **optimize operations** and **improve efficiency**



# Windesk.fm CAFM Integrations

- Building Management System
- IoT Gateways
- Payment Solutions
- Legacy Applications



# Technology & Features

## Software Architecture

- Microservice Architecture
- PrimeReact – WEB Based UI
- Mobile App (Android & IOS)
- Embedded Data Warehouse
- Multi Tenant Ready

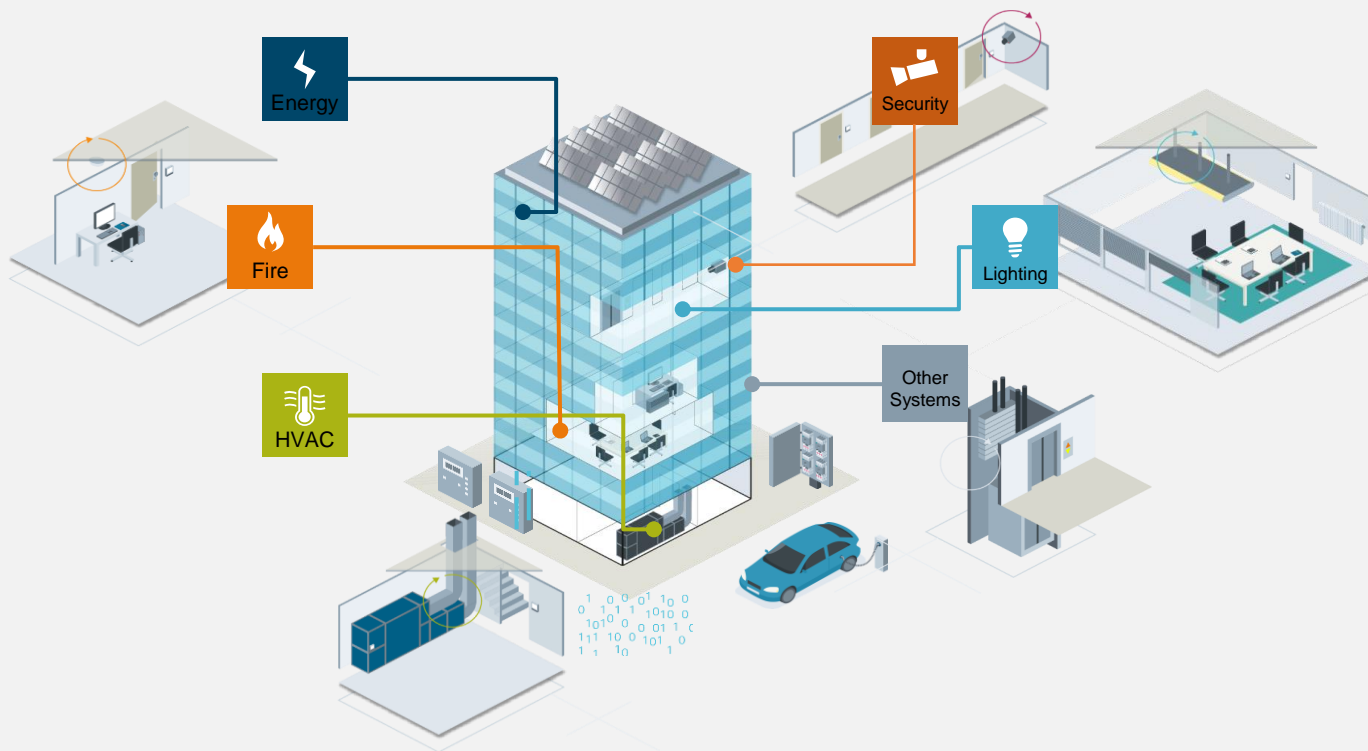
## Integration Layer

- BMS Systems
- IoT Gateway
- Legacy System – Webservices
- Payment Solutions

## Infra

- AWS
- OnPrem
  - Hosting - Private Cloud
  - Kubernetes/ Openshift Platform
  - High Available Architecture

# Windesk.fm CAFM Solution Scope



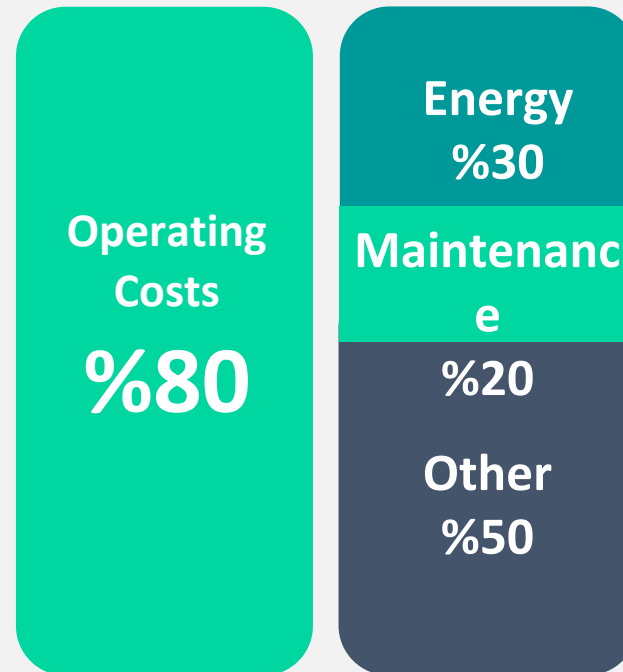
- Asset Lifecycle
- Building Lifecycle
- Technical Services
- Facilities Services
- Compliance /Regulations
- Environment Sustainability
- Energy Management

# Building-Facility Investment and Operation Cost Cycle



Total Building Life Cycle Cost

Life Cost



Operating Costs



- Legislation Regulations
- Legal Controls
- Human Errors
- Equipment Failures
- Power Outages
- Natural Disasters

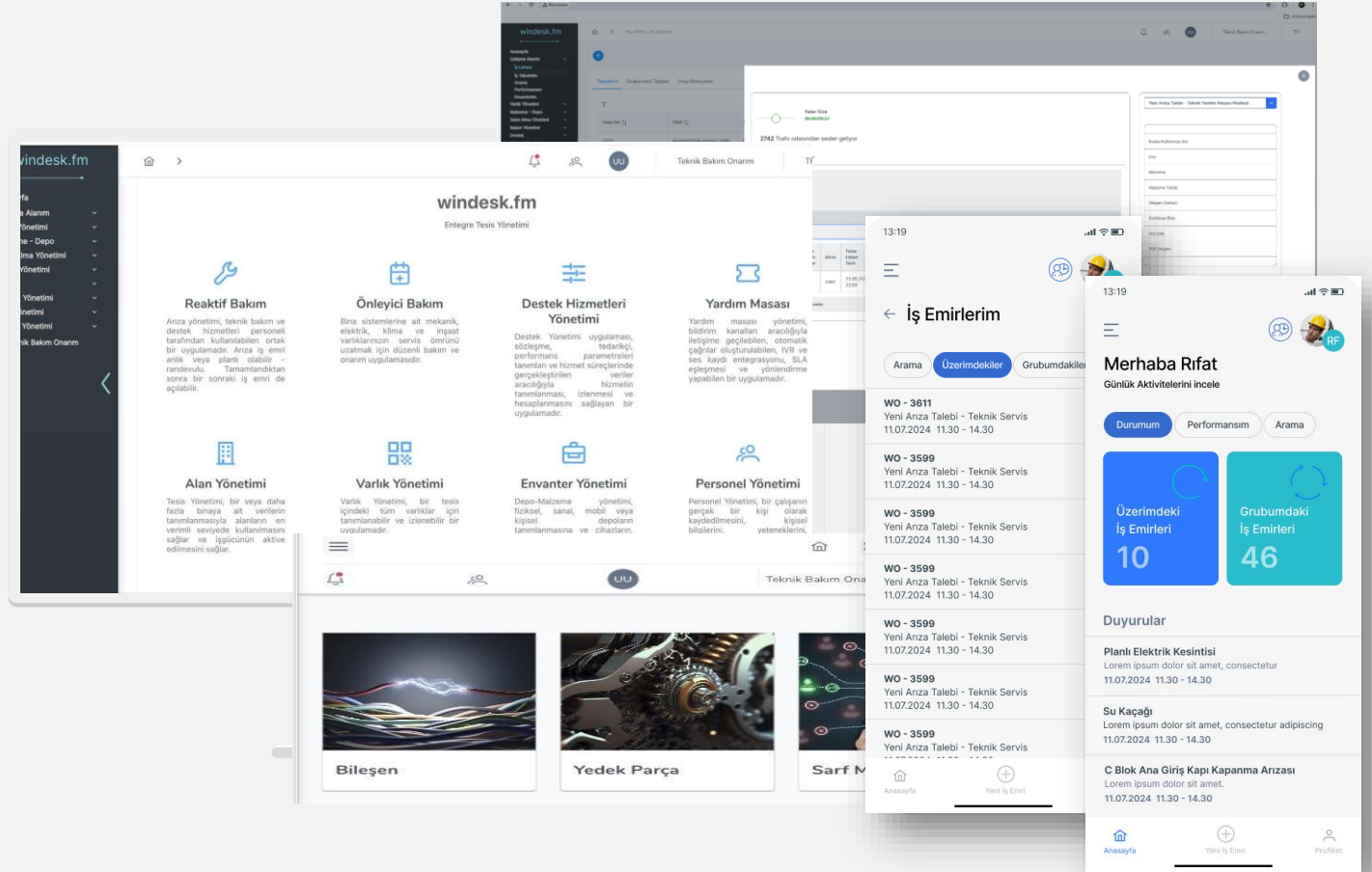
Legal Obligations and Risks

WHEREVER  
SERVICES  
ARE  
PRODUCED

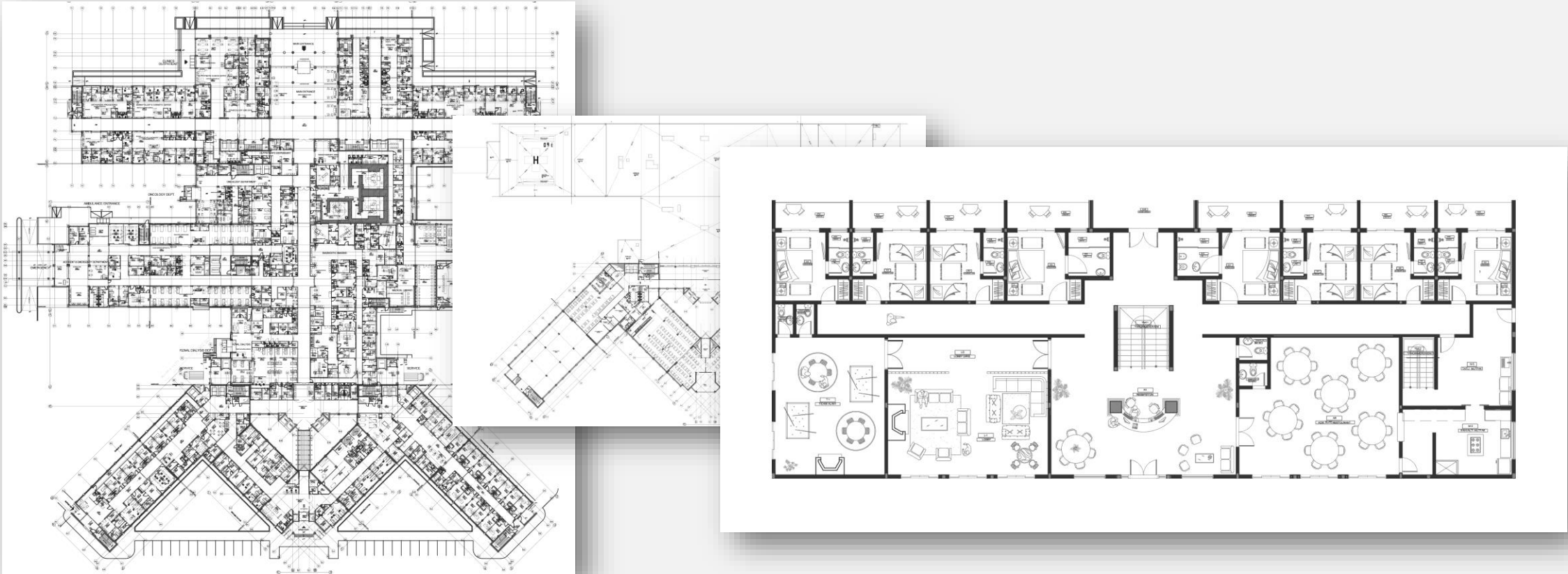
## 03\_ **windesk.fm CAFM Maintenance Management CMMS**

# Windesk.fm CAFM, Maintenance Management (CMMS)

- Workplace Management
- Asset Management
- Maintenance Management
- Work Order Management
- Fault Management
- IoT Solutions
- Material-Warehouse Management
- Contract Management
- Helpdesk
- Audit Management
- Reporting



# Space Management : Floor Plans

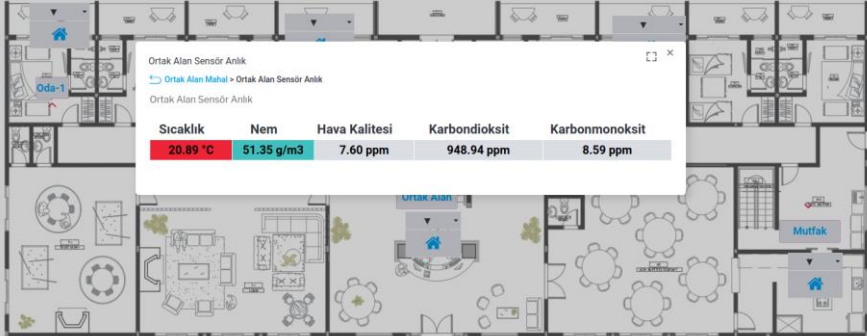


# Space Management : Floor Plans Sensor Placements – Monitoring

Otel Kat Planı



Otel Kat Planı



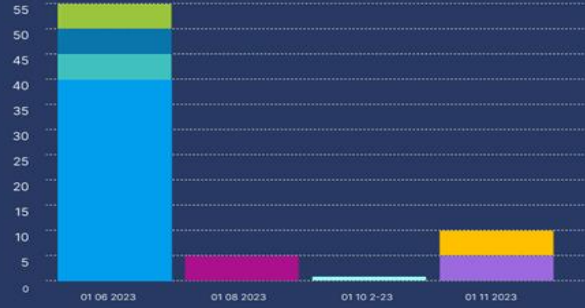
# Maintenance Management (CMMS) Reports and Dashboards

WO_ID	Cihaz	Kategori	Anıza Nedeni	Sorumlu	Açılma Tarihi	Kapanma Tarihi	Kapalı Kalma Süresi	Yedek Parça	Maliyet
WO_0001	ABC-R-1-SBK-15-UPS-1	UPS Cihazları	Fan Arızası	Elektrik Kürşat Ataman	11 06 2023 09:28 AM	11 06 2023 10:00 AM	00:30:00	Evet	9.800 TL
WO_0002	ABC-R-1-SBK-15-UPS-1	UPS Cihazları	Invertör Arızası	Elektrik İsmail Sarman	18 06 2023 07:32 AM	18 06 2023 07:45 AM	00:05:00	Hayır	-
WO_0003	ABC-R-1-SBK-15-UPS-1	UPS Cihazları	Kaynak Arızası	Elektrik Kürşat Ataman	14 06 2023 03:23 AM	14 06 2023 03:28 AM	00:10:00	Hayır	-
								Evet	65.800 TL
								Evet	168 TL
								Evet	1.000 TL
								Hayır	1.000 TL
								Evet	13.000 TL
								Hayır	-
								Evet	35.000 TL

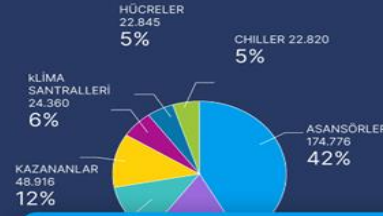
windesk.fm

CAFM – Dashboard – Teknik Onarım

2023 Arıza Adet Dağılımı



2023 Arıza Maliyet Dağılımı



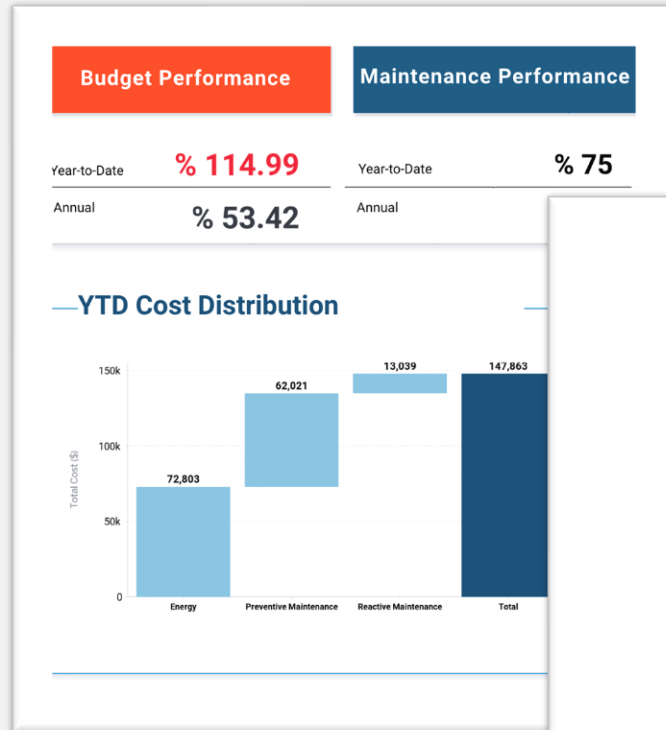
İş Emri Detayı

İş Emri No	WO-0001
Durum	Tamamlandı
Cihaz	ABC-R-1-SBK-UPS-1
Kategori	UPS Cihazları
Nedeni	Fan Arızası
Bildirimi	Koridor Yanık Kokuyor
İş Emri No	WO-0001
İş Emri Açıklaması	Elektrik Kürşat
İş Emri Açıklaması	Elektrik Kürşat
İş Emri Açıklaması	Fan Arızası
İş Emri Açıklaması	Fan yenisi ile değiştirilmiştir.
İş Emri Açıklaması	00:30:00
İş Emri Açıklaması	9.800TL

En Fazla Gelen 10 Arıza

Arıza Nedeni	Durumu	Kategori	Toplam
Salt Ekipman Arızası	Tamamlandı	Asansörler	14
Genel Bildirim	İşlemiz Kapatıldı	Asansörler	5
Fren Arızası	Tamamlandı	Asansörler	3
Geçersiz Bildirim	İşlemiz Kapatıldı	Asansörler	3
Kat Seviye Arızası	Tamamlandı	Asansörler	3
Kapı Arızası	Tamamlandı	Asansörler	2
Kat Seviye Arızası, Kontrol Kartı Arızası	Tamamlandı	Asansörler	2
Kullanıcı Hatası	Tamamlandı	Asansörler	2
Kullanıcı Bilgi Eksikliği	Tamamlandı	Asansörler	2
Motor Arızası	Tamamlandı	Klima Santralleri	2
Röle Arızası	Tamamlandı	Hücreler	2
Sensör Arızası	Tamamlandı	Asansörler	2

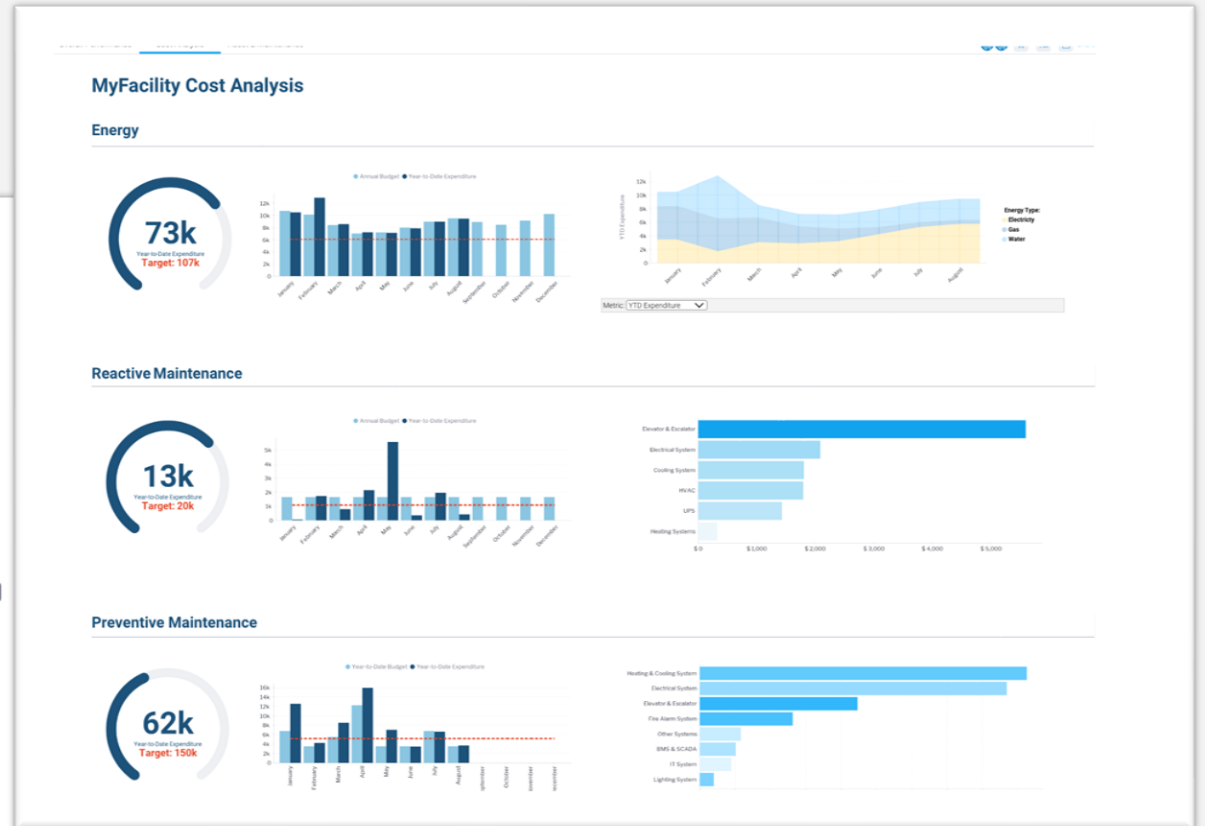
# Maintenance Management (CMMS) Dashboard



**HVAC Problem**

System Administrator | Published: 07-09-2024

Read by [Avatar] [Avatar]

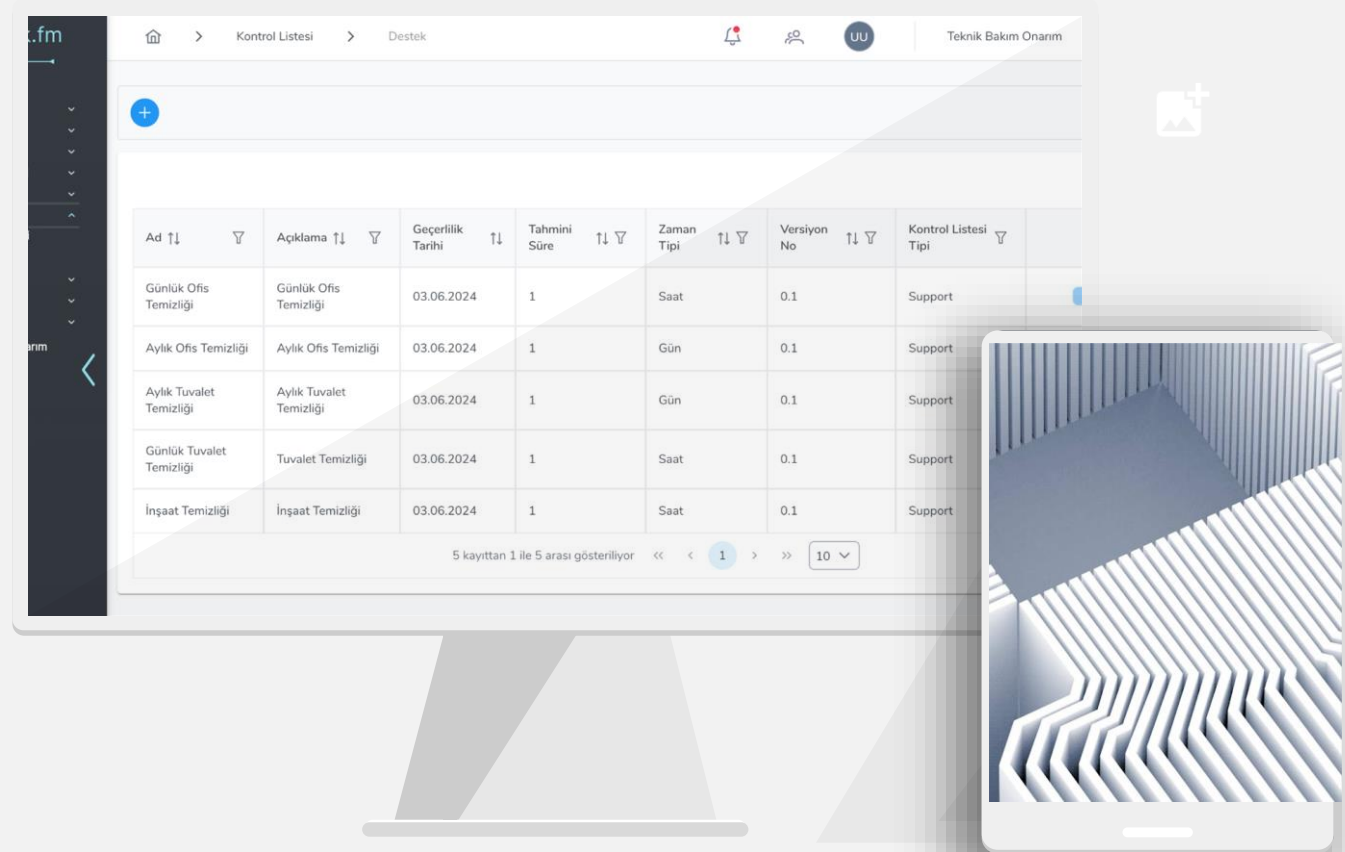


WHEREVER  
SERVICES  
ARE  
PRODUCED

## 04\_ **windesk.fm CAFM Service Management (Soft Facilities Services)**

# windesk.fm CAFM, Service Management (Soft Facilities Services)

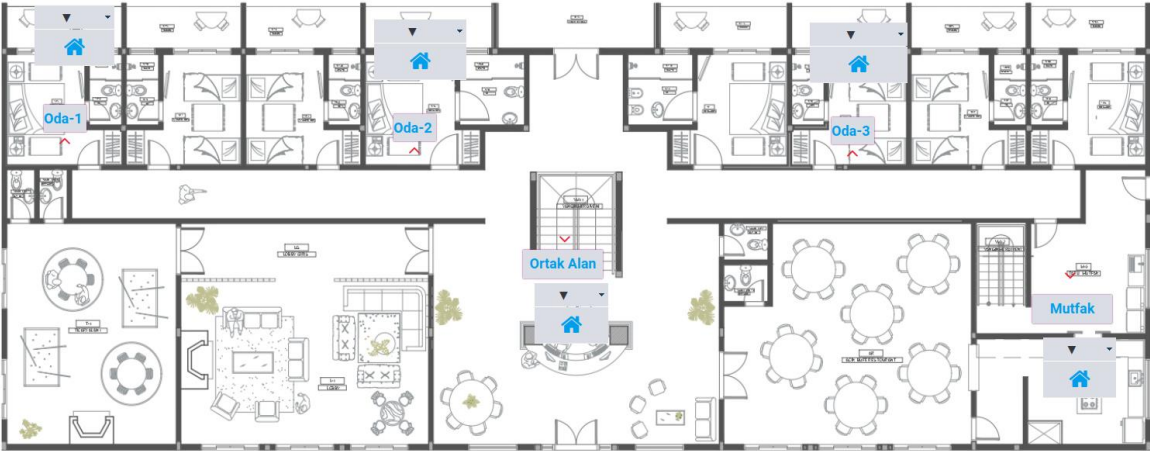
- Workplace Management
- Routine Task Management
- Instant Service Requests
- IoT Solutions
- Material-Warehouse Management
- Contract Management
- Helpdesk
- Staff Management
- Audit Management
- Survey Management
- Reporting



# Space Management : Floor Plans

## Smart Services – Monitoring & Management

Otel Kat Planı



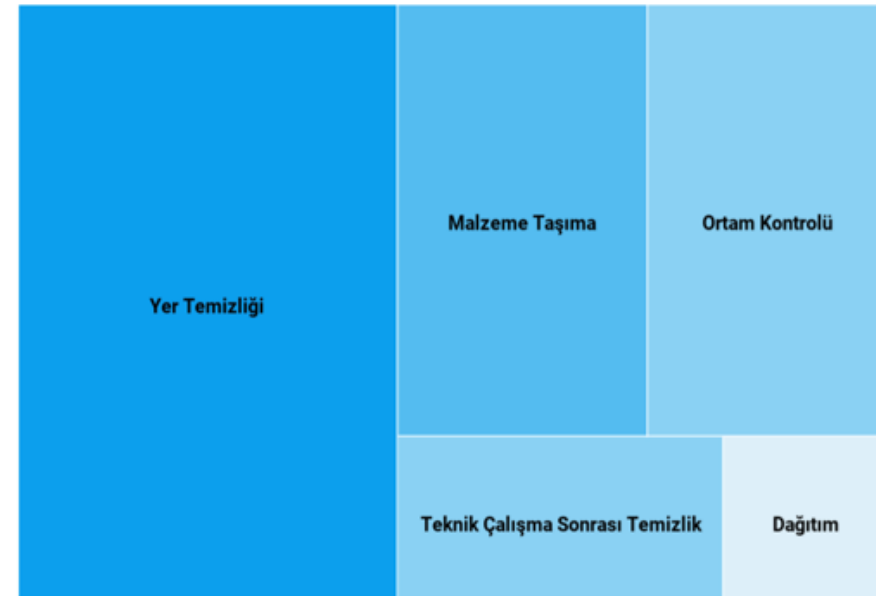
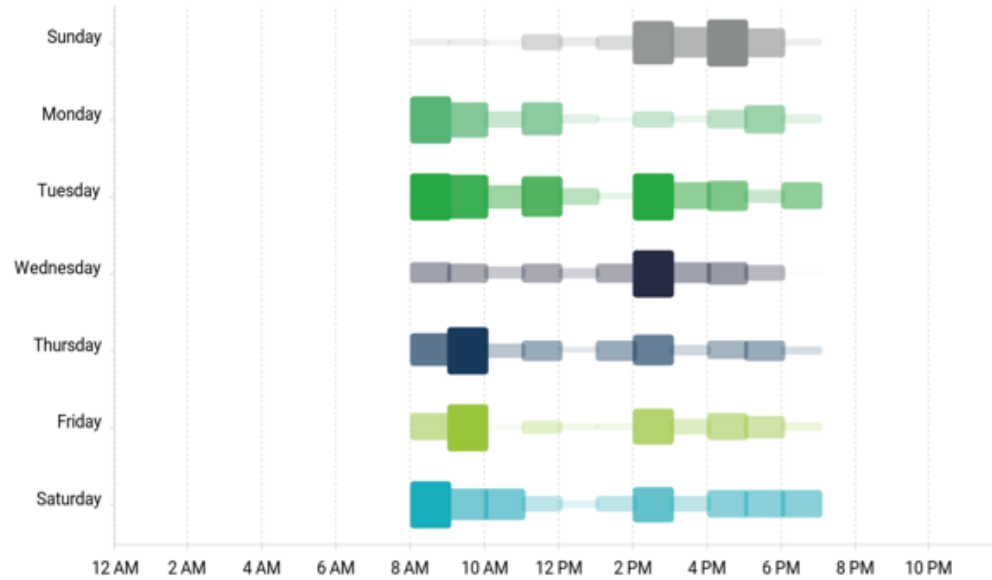
Otel Kat Planı

Sıcaklık	Nem	Hava Kalitesi	Karbondioksit	Karbonmonoksit
20.89 °C	51.35 g/m3	7.60 ppm	948.94 ppm	8.59 ppm

# windesk.fm CAFM, Service Management (Soft Facilities Services)

## Ek Hizmet Talep Yoğunluk Analizi

### Additional service Demand Density analysis



Adet: 0 9

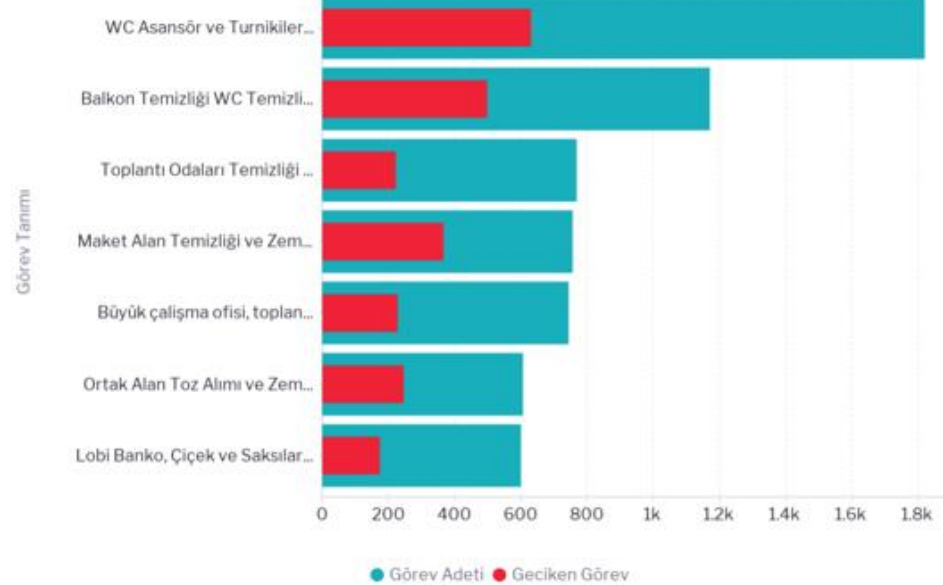
# Service Management (Soft Services) Reports and Dashboards

## PLANLI GÖREVLER

Planned tasks

Hedef Zamana Uyum Performansı

Target time adaptation performance



Şeflere Göre Planlı Görev Dağılımı

Planned task distribution according to chiefs



# Windesk.fm CAFM Unified Operation Center – On The Same Platform



Operation Management

Energy Efficiency



Real Time Monitoring



Data Driven Decision

WHEREVER  
SERVICES  
ARE  
PRODUCED

## 05 — windesk.fm CAFM BMS and Energy Management System

# windesk.fm CAFM, BMS and Operation Management (BMS Integration)

## Building Weak Flow Systems

**BMS SYSTEMS**  
**DesigoCC**

Aydınlatma  
Enerji  
Isıtma  
İklimlendirme  
Güvenlik  
Havalandırma

## Central Operations Management

**WINDESK**  
**CAFM**

Safety Security HVAC Lighting Power 3rd Energy Integration

Alarm Yönetimi Arıza Yönetimi Bakım Yönetimi Varlık Yönetimi Alan Yönetimi Hizmet Yönetimi

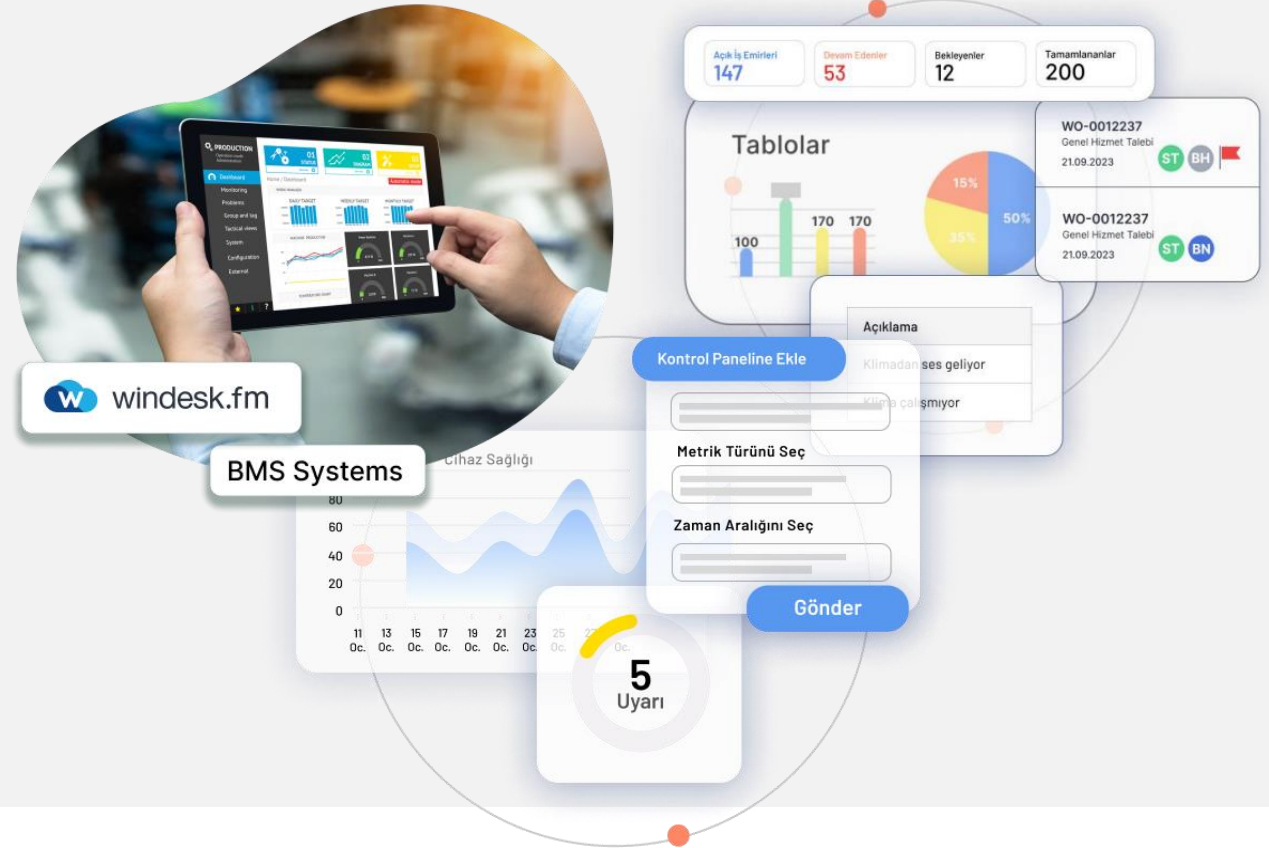
Software applications integration

# windesk.fm - BMS and Operations Management

## BMS & Operation Management System

windesk.fm CMMS  
+  
BMS and IoT Data  
+  
Operation Data  
+  
Makina Öğrenmesi  
=

**Analysis & Journey & Stories**

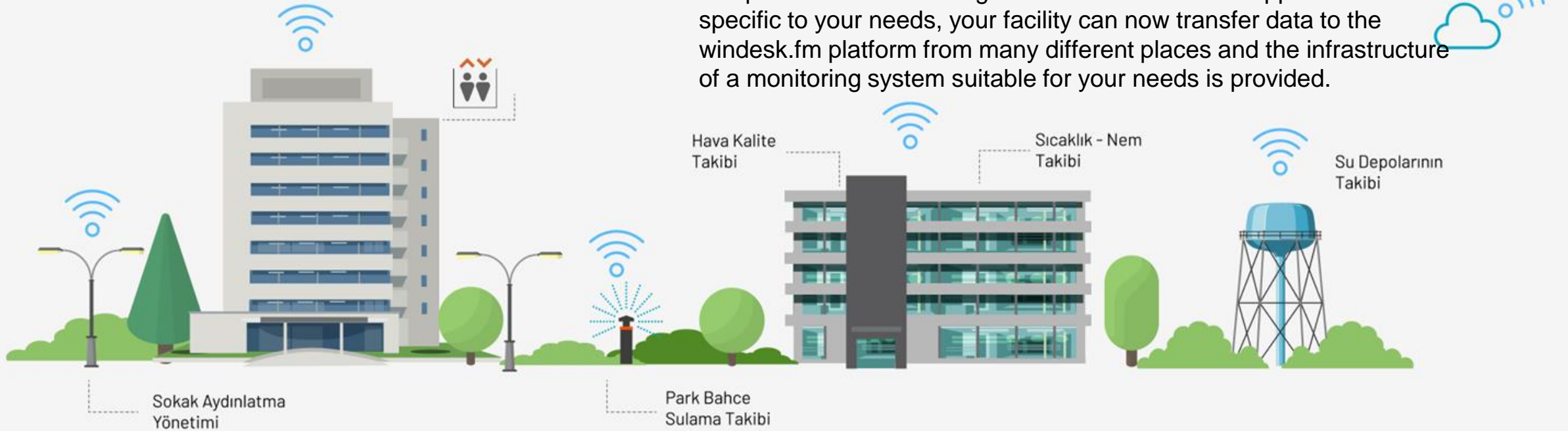


# windesk.fm Facility and Energy Management

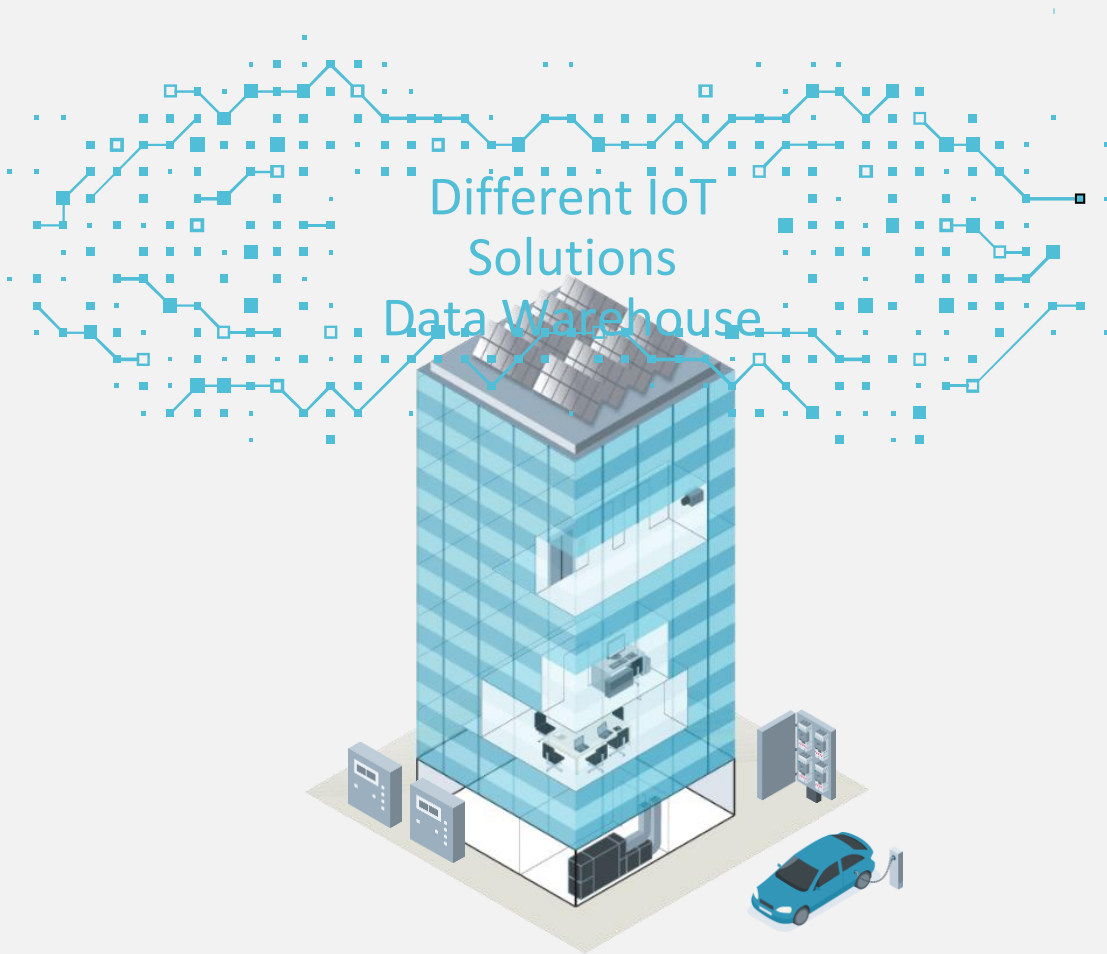
## Sustainability

### What does your facility actually tell you?

All kinds of equipment in the building that consumes energy and provides a service in return can be monitored with Windesk.fm. With independent IoT technologies and IoT Sensor and Application Modules specific to your needs, your facility can now transfer data to the windesk.fm platform from many different places and the infrastructure of a monitoring system suitable for your needs is provided.



# windesk.fm Facility and Energy Management



## Traceability and Comparison Analysis;

In the processes of supporting improving policies and practices such as green environment, green building, carbon footprint under the sustainability strategy, windesk.fm platform provides valuable report outputs and status results to the Managements by transferring the IoT sensor data collected from the facility, including operating scenarios, to the data environment, and by utilizing Machine Learning and Artificial Intelligence infrastructures.

## windesk.fm Facility and Energy Management



Improvement, efficiency increase and savings  
process management;

The output obtained after the analysis of the collected data is the point where the system starts to provide benefits. With the operation of project-specific rule sets (the same application may contain different scenarios in each project), a decision mechanism based on real data emerges.

Data is received from the air conditioning, mechanical and electrical systems in a building. This telemetry data is processed for each system/sensor. Again, a decision system is supported for improvement actions according to a reference value determined separately for each system.

# windesk.fm – Facility and Energy Management

## Energy Management System



Windesk.fm CAFM

+

IoT Applications (Monitoring)

+

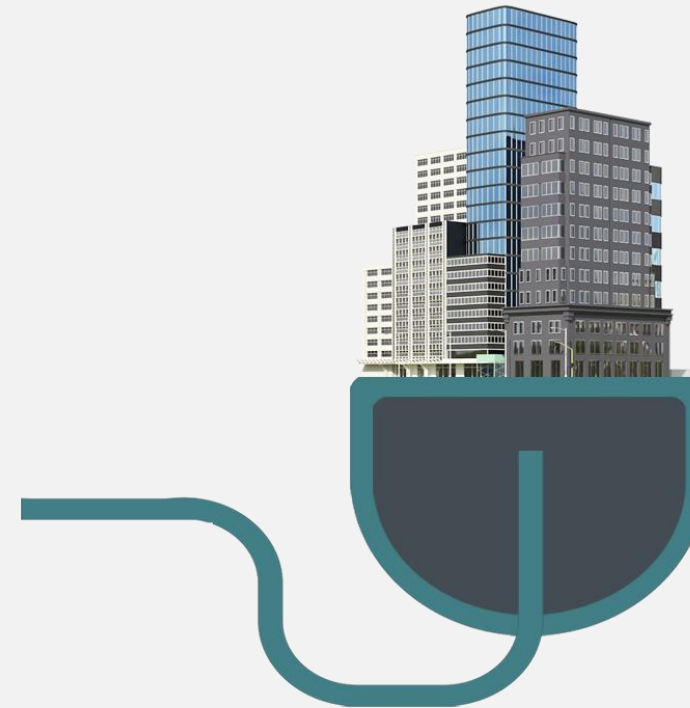
Data Warehouse

Analysis

+

Decision Support System

**Analysis & Journey & Stories**



WHEREVER  
SERVICES  
ARE  
PRODUCED

# 06\_ windesk.fm Workspace Management



# Windesk jointPlace – Workplace Management



## Space Management:

- Easily define and manage physical and virtual offices, fixed desks, common areas and event areas.
- Create feature sets for areas and customize them according to their intended use (e.g. quiet work areas, meeting rooms, etc.).
- Automate the use of entry/exit, meeting and event areas according to membership rights.

## Membership Management:

- Create different membership packages for long-term, short-term, daily and hourly use.
- Provide these packages as self-service on both web and mobile platforms, allowing users to easily purchase them.

## Invoicing and Payments:

- Integrate end-to-end digital payment and invoicing processes.
- Allow users to make payments and receive invoices online quickly and securely.

## Collaboration and Communication:

- Enable event organization, event tracking and guest management processes.
- Create an environment that increases collaboration within the coworking community.

# Windesk JointPlace - Workplace Management



## Reporting:

- Presenting the business's occupancy rates, income reports and space usage analyses in a detailed and understandable way.
- Providing comprehensive reports that will allow managers to optimize their business processes.

## Flexible User Experience:

- Offering users easy reservation and space management with a modern, user-friendly interface.
- Quick and seamless management of processes such as reservations, check-in/check-out.

## Comprehensive Management:

- The ability to centrally manage all coworking processes from a single platform.
- Integrated solutions that save businesses time and optimize processes.

## Scalable Solutions:

- A flexible and scalable structure that appeals to businesses of all sizes, from small businesses to large coworking networks.
- Providing a solution that is compatible with the growth of coworking businesses and constantly evolving.

# windesk.fm - Workspace Management



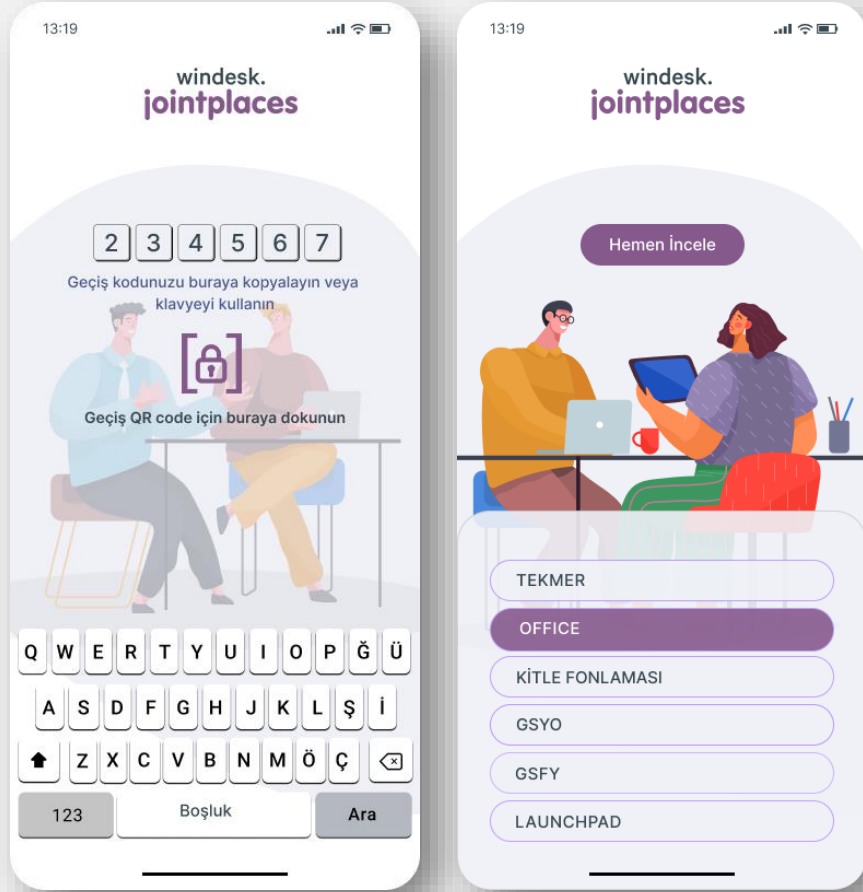
Create a workplace control your members will love with the Windesk.fm Workspace Management Module. Let them open the doors.

Connect with the community via iOS and Android mobile apps. View current and upcoming events in meeting rooms.

Easily recruit members, reserve and rent your spaces with mobile apps



# windesk.fm Workplace Management

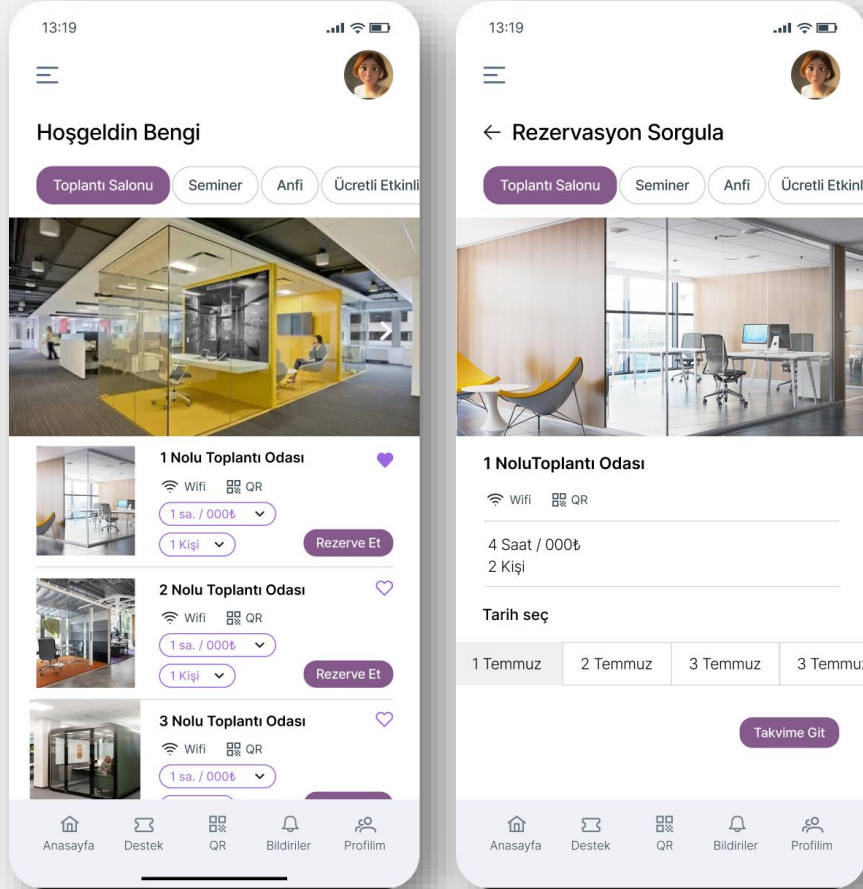


Develop a common language that everyone loves.  
Bring organized and practical methods to your business.

Generate more revenue by automating invoicing and payments.

Thanks to easy integration with payment systems, planning, booking and payment processes are easily completed in just a few clicks.

# windesk.fm Workplace Management

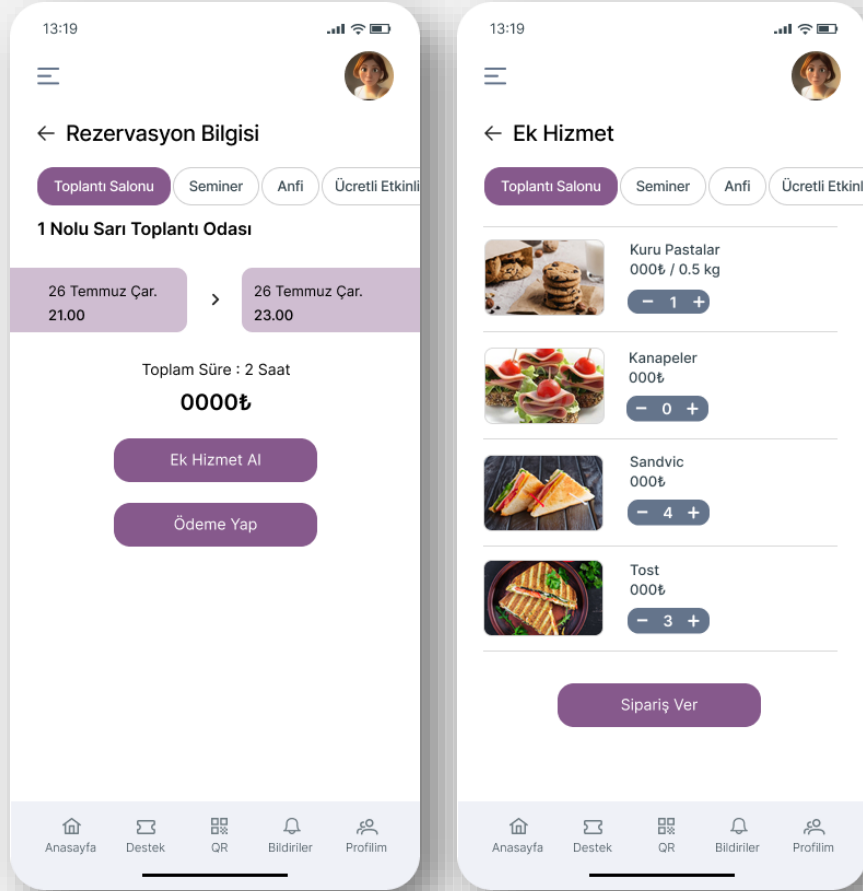


Develop a common language that everyone loves.  
Bring organized and practical methods to your business.

Generate more revenue by automating invoicing and payments.

By easy integration with payment systems,  
Planning, booking and payment processes are easily completed in just a few clicks by easy integration with payment systems.

# windesk.fm Workspace Management Application Scope



## USER APPS (Mobile Only)

- ✓ Mobile Door Keys
- ✓ Visitor - Guest App

- ▶ Member Apps
- ▶ Marketplace

- ⌚ Communication hub
- ⌚ CRM - (Sales Opportunity)
- ⌚ Digital checkin - checkout
- ⌚ **Customer Journey**

## ADMIN APPS (WEB & Mobile)

- ▶ Space Management
- ▶ Plan Management
- ⌚ Operation Management
- ⌚ Resource Management

# Windesk.fm CAFM License Model

## Hosting

- Private Cloud
- Public Cloud
- Min 50 user
- No installation cost

## On Prem

- Customer Data Center
- Server & Infra will be supplied by customer
- Implementation Services will be charged separately

# Thank you for your Attention

windesk.fm  
CAFM

WHEREVER  
SERVICES  
ARE  
PRODUCED

signumtte

This document and all information contained here in is the sole property of Signumtte. No intellectual property rights are granted by the delivery of this document or disclosure of its content. This document shall not be reproduced or disclosed to a third party without the express written consent of Signumtte. This document and its content shall not be used for any other purpose other than for which it is supplied.