

SIEMENS



VERSICHARGE BLUE™ AC

# Charging America

[usa.siemens.com/versichargeblue](http://usa.siemens.com/versichargeblue)





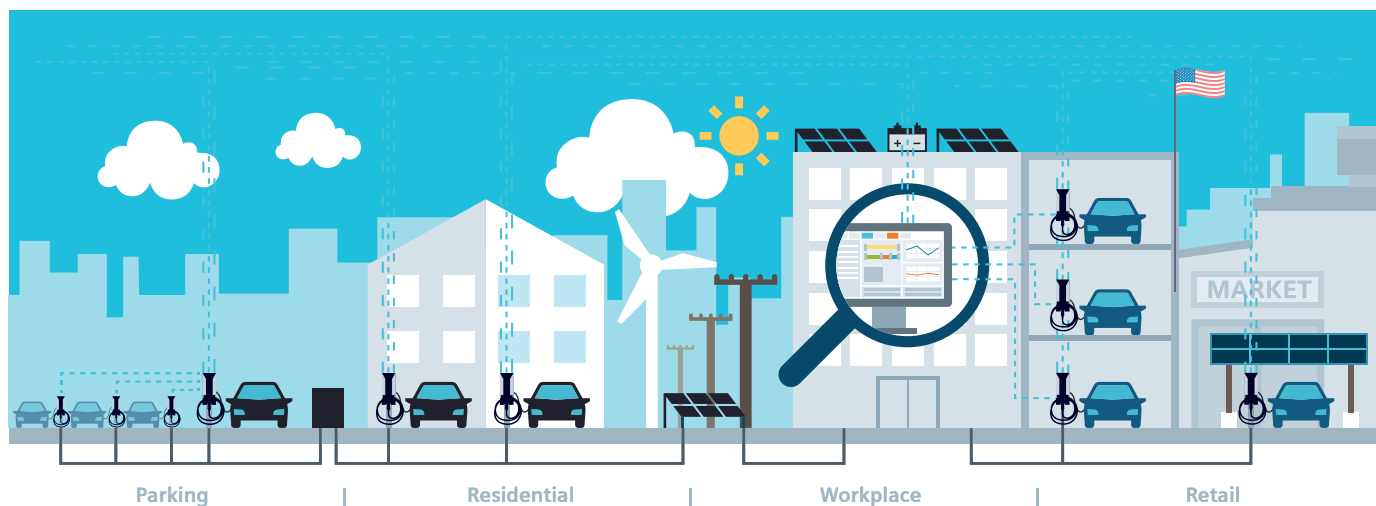
# The VersiCharge Blue™ AC

## Powerful, versatile, Buy American

Siemens VersiCharge chargers have stood for superior quality, ruggedness, and proven technology for more than a decade and have reliably provided thousands of charges to EV drivers worldwide. The VersiCharge Blue AC charger is continuing this tradition with several enhancements, a fresh and appealing design, and up to 11.5 kW of AC charging power that is manufactured in America. VersiCharge Blue provides best-in-class communication options and comes equipped with

a 25-foot cable and 5-year warranty and Energy Star certification.

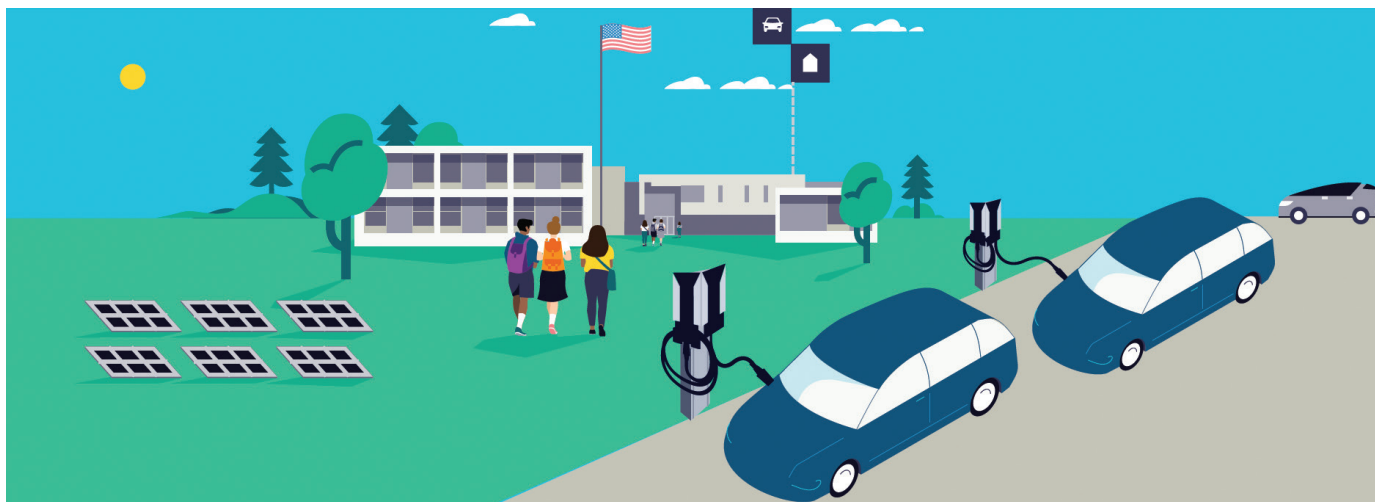
The VersiCharge Blue AC charger can be connected to the customer's preferred back-end system. The rugged and slender VersiCharge Blue charger is suitable for both indoor and outdoor use and can either be mounted on a wall or a supplementary post.



## The charger that is designed for everyone, everywhere

VersiCharge Blue is perfect for all applications, including workspaces, retail, hospitals, parking garages, airports, school campuses and multi-residential dwellings, as well as light to medium-duty fleets. This AC charger comes with an easy-to-use mobile application and can charge any standard EV.

The VersiCharge Blue charger is revenue accurate and offers cutting-edge technology that meets Buy American compliance. VersiCharge Blue aims to reduce dependence on other countries for key raw materials, components and other products vital to growing EV infrastructure.



# Making the difference for America

## Key features

Compatibility with all common EVs and applicable charging standards. In addition, the VersiCharge Blue AC charger is easy to use and have convenience features such as delayed and planned charging.

Rugged housing fit for outdoor applications (NEMA 4)

Integrated high performing dual band Wi-Fi

UL listed and tested to J1772 standard to ensure safety and interoperability with all standard EVs

UMTS LTE/4G connectivity for mobile-network communication

Status bar for information on authentication and charging

Status LEDs indicating connectivity, locked panel and use of remote control

Embedded metering

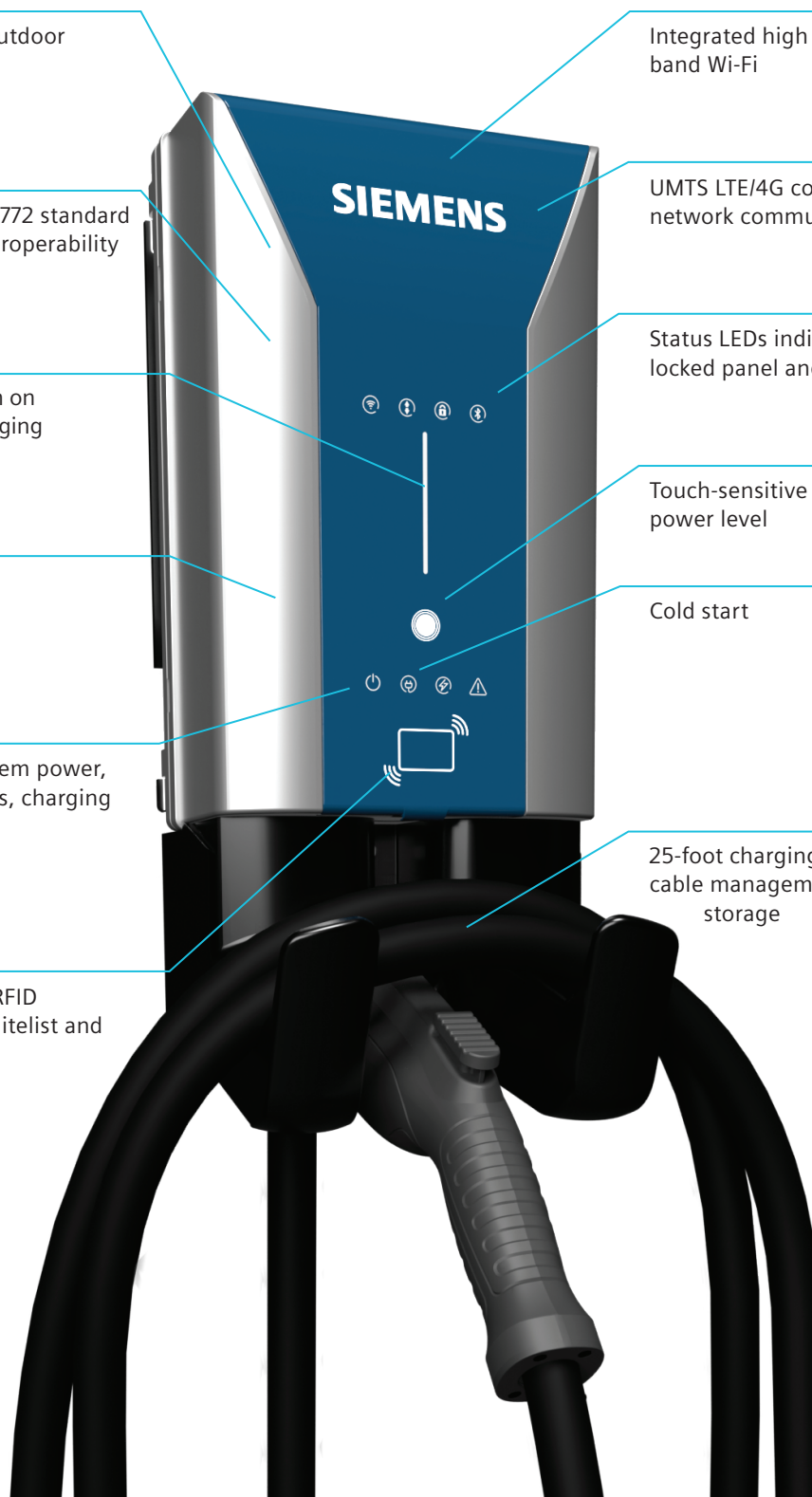
Touch-sensitive button for desired power level

Cold start

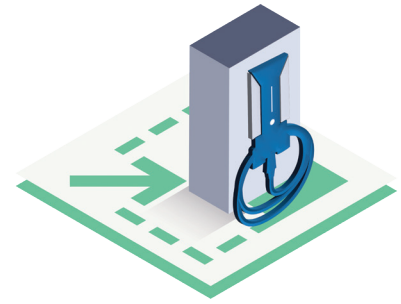
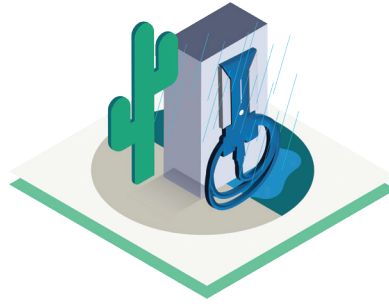
Status LEDs indicate system power, vehicle connection status, charging power and fault status

25-foot charging cable and integrated cable management for convenient storage

User authentication via RFID (MIFARE classic, local whitelist and synching via OCPP)



# Flexibility for the future



## State of the Art and Future Proof

- Energy Star certified
- Tested EV interoperability
- Easy setup using Sifinity Go mobile app (Android/iOS)
- Open payment options
- Buy American compliant
- Can be purchased through Sourcewell, GSA, BPA, and through our Siemens partners

## Robust and Reliable

- Indoor outdoor capable (NEMA 4)
- Designed to meet highest cybersecurity standards
- Industry leading safety features
- Rigorously tested by Siemens

## Intuitive Design

- Modular and extendable site configurations
- Various communication possibilities
- Wall or post mounted

## Smart building integration

The VersiCharge Blue AC charger offers various communication interfaces for seamless integration to local and remote networks.



Cellular  
Wi-Fi  
Ethernet



# VersiCharge Blue™ AC Series – Accessories

## Flexible posts for all applications

- PV fade-resistant and rust-resistant
- ADA compliant
- Single and dual post options
- Cable retraction system, 25-foot. cable
- Posts come with install kits for easy installation



Description	Catalog Number
VersiCharge dual post: 95 inches tall (side by side), with dual cable retraction. Comes with installation and includes 1-year warranty.	US2:VCPOSTCR2A
VersiCharge single post: 95 inches tall, with cable retraction. Comes with installation kit and includes 1-year warranty.	US2:VCPOSTCR1A
Standard Post: 48 inches tall, can support one or two chargers. Comes with install kit, made of aluminum. Includes 3-year warranty.	US2:VCPOSTGRY2
One cellular and one non-cellular 48 A commercial chargers, 1 year cell service for network sharing, 1 year of cloud services for two devices, 1 Dual side-by-side 72" integrated post with cable retraction system.	US2:VERSIPACK48CLO
Two 48 A Buy American cellular commercial chargers, 1 year cell service for network sharing, 1 year of cloud services for two devices, 1 Dual side-by-side 95" integrated post with cable retraction system.	US2:VERSIPACK48BAC
One 48 A cellular commercial charger, 1 year cell service, 1 year of cloud services, 1 single 72" integrated post with cable retraction system.	US2:VERSIPACK48AB1
One 48 A cellular Buy American commercial charger, 1 year cell service, 1 year of cloud services, 1 single 95" integrated post with cable retraction system.	US2:VERSIPACK48BA1

**Data plans for chargers:** Siemens offers chargers with data plans for customer convenience. See table below for data plans.

Description	Catalog Number
Multi-carrier pooled data plan: 1-year data plan, 1 GB capped monthly bandwidth (supports one cellular unit and one non-cellular unit). This is an annual fee.	US2:DATAPLAN1

## Sit back and relax, we have this covered with AC StartUp.

Our AC StartUp services ensure one company provides the startup and configuration of your AC chargers. We make certain the chargers are wired correctly and successfully paired to the cloud through Cellular, Ethernet, or Wi-Fi. Our goal remains to minimize the initial charger downtime and ensure interoperability.



### AC StartUp includes:

- All travel and living costs included in price
- Configuration and connection of the chargers to the Siemens cloud-based software-as-a-service platform
- Dedicated project engineer to work with the end user
- Remote site evaluation review to ensure everything is setup and ready to go
- Basic onsite AC charger review during startup
- A personalized experience to ensure a stress-free commissioning of chargers

Description	Catalog Number
Startup for up to 4 AC Chargers	US2:ACSTARTUP4
Startup for up to 10 AC Chargers	US2:ACSTARTUP10
Startup for more than 10 AC Chargers (Can only be added in COMPAS)	US2:ACSTARTUPBULK

## VersiCharge Blue™ AC Series – Technical Data

### Features and functions

Charging mode	Level 2
Vehicle connection	J1772 plug with 25-foot cable, 48 A / integrated cable management
AC power output	Split phase up to 11.5 kW (48 A) - requires a 60 A breaker
Mounting options	Wall and post mounting, see accessories
Touch button	Reset faults, perform factory reset
Charging status LEDs	Power, charging state, authentication
Communication status LEDs	Connected / not connected during operation
Network Sharing	Connects to one non-cellular unit by Wi-Fi (20 feet line of sight)
Load management	Via OCPP, Modbus RTU/TCP

### Communication

Interfaces	Wi-Fi, Ethernet, RS485 (Modbus RTU) and LTE, WCDMA with optional cellular plan
User authentication	RFID (local Whitelist, MIFARE); ISO15118-2 HW-ready
Configuration	Via Siemens mobile app (Sifinity Go), PC configuration tool, or Sifinity Setup
Back-end protocol	OCPP 1.6, upgradeable to OCPP 2.0.1
Software upgrade	Over-the-air (OTA)

### Electrical design

Power supply voltage	Single phase: 208 V / 240 V AC, 60 Hz
Rated current settings (A)	12, 16, 24, 32, 40, 48
Wire size	8 AWG / 6 AWG (90 °C rated wire)
Network type	Split phase
Energy metering	Embedded metering; NTEP units have +/- 1% accuracy**
Ground fault protection	20 mA
Over voltage protection	267 V (maximum 275 V)
Over current protection	Current +10% above configured threshold, minimum +2A, 5 seconds
Operating altitude	6,562 ft

### General design

Environmental rating	Indoor and outdoor, NEMA 4, IK 8
Dimensions (H x W x D)	16.10 in x 7.09 in x 3.78 in
Weight	22 lbs
Ambient conditions	Operating temperature: -22 °F to +122 °F, storage temperature: -40 °F to +140 °F, 98% non-condensing
Colors	Silver metallic (Pantone 10077), black holster, Dark blue (Pantone 7700)

### Certificates and standards

cUL listed	According to UL 1998, UL 991, UL2594/CSA C22.2 No.280/NMX-J-677-ANCE, UL 2231-1/CSA C22.2 No.281.1/ NMX-J-668-1, UL 2231-2/CSA C22.2 No.281.2/NMX-J-668/2-ANCE, UL 2251/CSA C22.2 No.282/NMX-J-678-ANCE
EMC	FCC Part 15.247, FCC Part 15B, FCC Part 15C
Energy Star Certification	Energy Star 1.2, NTEP certified
Warranty	3-year warranty for standard VersiCharge 48. 5-year warranty for VersiCharge Blue

		Maximum current	Model number	Wi-Fi and Ethernet	RFID identification	Embedded metering	LTE WCDMA	Installed SIM Card*	NTEP
Buy American Commercial "Blue" version	Cellular	48 A	8EM13155CG141GA2	✓	✓	✓	✓	✓	—
			8EM1315-5HG14-1GA2**	✓	✓	✓	✓	✓	✓

Back-end protocol: OCPP 1.6, upgradeable to OCPP 2.0.1

\*SIM card requires cell plan US2:DATAPLAN1 for activation

\*\*Metering accuracy only applicable to specified model number

### Notes:

This image shows a single sheet of white paper with horizontal ruling lines. The lines are evenly spaced and run across the width of the page. There are no margins, text, or other markings on the paper.

**Legal Manufacturer**

Siemens Industry, Inc.  
3617 Parkway Ln  
Peachtree Corners, GA 30092  
United States of America

Telephone: +1 (855) 950-6339, option 9, or visit  
[www.usa.siemens.com/createcase](http://www.usa.siemens.com/createcase) for service  
questions or inquiries

Article No. SIE-B40001-00-4AUS

This document contains a general description of available technical options only and its effectiveness will be subject to specific variables including field conditions and project parameters. Siemens does not make representations, warranties, or assurances as to the accuracy or completeness of the content contained herein. Siemens reserves the right to modify the technology and product specifications in its sole discretion without advance notice.