



INSTALLATION & OPERATION

**A53350 900 MHZ AND A53355 2.4 GHZ
ETHERNET SPREADSPECTRUM RADIO
(Cluster-Hub Point-to-Multipoint)**

JANUARY 2011 (REVISED JULY 2015)

**DOCUMENT NO. SIG-00-11-01
VERSION A.1**

Siemens Industry, Inc. Rail Automation
9568 Archibald Ave., Suite 100,
Rancho Cucamonga, California 91730
1-800-793-SAFE

Copyright © 2011 - 2015 Siemens Industry, Inc.
All rights reserved

PRINTED IN U.S.A.

PROPRIETARY INFORMATION

Siemens Industry, Inc. has a proprietary interest in the information contained herein and, in some instances, has patent rights in the systems and components described. It is requested that you distribute this information only to those responsible people within your organization who have an official interest.

This document or the information disclosed herein, shall not be reproduced or transferred to other documents or used or disclosed for manufacturing or for any other purpose except as specifically authorized in writing by **Siemens Industry, Inc.**

TRANSLATIONS

The manuals and product information of Siemens Industry, Inc. are intended to be produced and read in English. Any translation of the manuals and product information are unofficial and can be imprecise and inaccurate in whole or in part. Siemens Industry, Inc. does not warrant the accuracy, reliability, or timeliness of any information contained in any translation of manual or product information from its original official released version in English and shall not be liable for any losses caused by such reliance on the accuracy, reliability, or timeliness of such information. Any person or entity that relies on translated information does so at his or her own risk.

WARRANTY INFORMATION

Siemens Industry, Inc. warranty policy is as stated in the current Terms and Conditions of Sale document. Warranty adjustments will not be allowed for products or components which have been subjected to abuse, alteration, improper handling or installation, or which have not been operated in accordance with Seller's instructions. Alteration or removal of any serial number or identification mark voids the warranty.

SALES AND SERVICE LOCATIONS

Technical assistance and sales information on **Siemens Industry, Inc.** products may be obtained at the following locations:

SIEMENS INDUSTRY, INC. RAIL AUTOMATION
2400 NELSON MILLER PARKWAY
LOUISVILLE, KENTUCKY 40223
TELEPHONE: (502) 618-8800
FAX: (502) 618-8810
SALES & SERVICE: (800) 626-2710
WEB SITE: <http://www.rail-automation.com/>

SIEMENS INDUSTRY, INC. RAIL AUTOMATION
939 S. MAIN STREET
MARION, KENTUCKY 42064
TELEPHONE: (270) 918-7800
CUSTOMER SERVICE: (800) 626-2710
TECHNICAL SUPPORT: (800) 793-7233
FAX: (270) 918-7830

FCC RULES COMPLIANCE

The equipment covered in this manual has been tested and found to comply with the limits for a Class B digital device, pursuant to part 15 of the FCC Rules. These limits are designed to provide reasonable protection against harmful interference in a residential installation. This equipment generates, uses and can radiate radio frequency energy and, if not installed and used in accordance with the instructions, may cause harmful interference to radio communications. However, there is no guarantee that interference will not occur in a particular installation. If this equipment does cause harmful interference to radio or television reception, which can be determined by turning the equipment off and on, the user is encouraged to try to correct the interference by one or more of the following measures:

- Reorient or relocate the receiving antenna.
- Increase the separation between the equipment and receiver.
- Connect the equipment into an outlet on a circuit different from that to which the receiver is connected.
- Consult the dealer or an experienced radio/TV technician for help.

Modifications not expressly approved by the manufacturer could void the user's authority to operate the equipment under FCC rules.



RF EXPOSURE WARNING



All antenna installation and servicing is to be performed by qualified technical personnel only. When servicing or working at distances closer than 7 feet (2 meters), ensure the transmitter has been disabled. Depending upon the application and the gain of the antenna, the total composite power could exceed 100 watts EIRP. The antenna location should be such that only qualified technical personnel can access it, and under normal operating conditions no other person can come in contact or approach within 7 feet (2 meters) of the antenna.

DOCUMENT HISTORY

Version	Release Date	Sections Changed	Details of Change
A	NOV 2010		Initial Release
A.1	JUL 2015	All	Convert to Siemens format

TABLE OF CONTENTS

Section	Title	Page
	PROPRIETARY INFORMATION	ii
	TRANSLATIONS.....	ii
	WARRANTY INFORMATION	ii
	SALES AND SERVICE LOCATIONS	ii
	FCC RULES COMPLIANCE	iii
	DOCUMENT HISTORY	iv
	TABLE OF CONTENTS	v
	LIST OF FIGURES.....	x
	LIST OF TABLES.....	xi
	NOTES, CAUTIONS, AND WARNINGS.....	xii
	ELECTROSTATIC DISCHARGE (ESD) PRECAUTIONS.....	xiii
	GLOSSARY	xiv
	SECTION 1.....	1-1
1.0	PRODUCT DESCRIPTION.....	1-1
1.1	RADIO OVERVIEW	1-1
1.2	ORDERING INFORMATION.....	1-2
1.2.1	Hardware information	1-2
1.2.2	Firmware Information.....	1-5
1.3	INCLUDED RADIO COMPONENTS.....	1-5
1.4	POLE MOUNTING BRACKET INFORMATION	1-6
1.5	WALL MOUNT BRACKET (OPTIONAL).....	1-8
1.6	RADIO CONNECTORS.....	1-9
1.7	POWER INSERTER UNIT	1-11
1.8	OUTDOOR INTERCONNECT POWER / DATA CABLE (J1).....	1-13
1.9	RADIO ACCESSORIES	1-15
1.9.1	Pre-configured Power / Data Cables	1-15
	SECTION 2.....	1-1
2.0	NETWORK TOPOLOGIES AND APPLICATIONS	2-1
2.1	NETWORK TOPOLOGIES.....	2-1
2.1.1	Cluster-Hub Point to Multipoint.....	2-1
2.2	FUNCTIONAL OPERATION	2-2
2.2.1	Time Division Multiplex Operation	2-2
2.2.2	Master Hub Radio.....	2-3

2.2.3	Master Hub Allocation.....	2-3
2.2.4	Cycle Synchronization	2-4
2.2.5	Inbound Packet Flow	2-4
2.2.6	Outbound Packet Flow	2-5
2.2.7	Dynamic Bandwidth Allocation	2-6
2.2.8	New Remote Radio Acquisition	2-7
2.2.9	Packet Priorities.....	2-7
2.3	NETWORK SIZE AND PERFORMANCE	2-8
2.4	ENCRYPTION.....	2-9
2.5	CHANNEL RESTRICTION.....	2-10
	SECTION 3.....	2-1
3.0	ANTENNA INSTALLATION AND ALIGNMENT.....	3-1
3.1	ANTENNA INSTALLATION.....	3-1
3.2	SIEMENS ANTENNA KITS	3-2
3.3	ANTENNA ALIGNMENT	3-2
3.4	SPECTRUM ANALYSIS AND CHANNEL SELECTION	3-3
3.5	OUTPUT POWER LIMITS (FCC).....	3-4
3.6	OUTPUT POWER LIMITS (CE)	3-5
3.7	MAXIMUM PERMISSIBLE EXPOSURE (MPE) LIMITATIONS.....	3-5
	SECTION 4.....	3-1
4.0	INSTALLATION AND SETUP.....	4-1
4.1	bench checkout (using radio ethernet connections).....	4-1
4.2	BENCH CHECKOUT (USING RADIO AUXILIARY PORTS).....	4-3
4.3	FIELD INSTALLATION.....	4-4
4.3.1	Configuration	4-4
	SECTION 5.....	4-1
5.0	UPGRADING FIRMWARE.....	5-1
5.1	DESCRIPTION	5-1
5.2	INSTALLING NEW FIRMWARE THROUGH THE ETHERNET PORT	5-2
5.3	INSTALLING NEW FIRMWARE USING TELNET	5-4
5.4	INSTALLING NEW FIRMWARE USING THE RS-232 SERIAL PORT.....	5-5
5.5	FEATURE UPGRADES.....	5-7
	SECTION 6.....	5-1
6.0	COMMANDS.....	6-1
6.1	CONFIGURATIONS TECHNIQUES	6-1
6.1.1	Serial Console	6-1
6.1.2	Econsole/Ethernet	6-1

6.1.3	Telnet	6-1
6.1.4	UDP/IP Interface	6-2
6.2	COMMAND SYNTAX	6-2
6.3	CONFIGURATION MANAGEMENT COMMANDS	6-3
6.3.1	Change-Password	6-4
6.3.2	Display-Configuration	6-5
6.3.3	Load-Configuration	6-5
6.3.4	Lock	6-5
6.3.5	Save-Configuration	6-5
6.3.6	Unlock	6-6
6.4	MAJOR CONFIGURATION PARAMETERS	6-6
6.4.1	Distance-Max	6-6
6.4.2	Encryption	6-7
6.4.3	Ethernet	6-8
6.4.4	Node	6-8
6.4.5	rf-receive Setup	6-9
6.4.6	rf-transmit Setup	6-10
6.4.7	Single-Node-Reboot	6-10
6.5	INTERNET PROTOCOL (IP) MANAGEMENT COMMANDS	6-11
6.5.1	IP-Configuration	6-11
6.5.2	Ping	6-12
6.5.3	SNMP	6-12
6.5.4	UDP-Configuration	6-13
6.6	INSTALLATION AND LINK MONITORING COMMANDS	6-14
6.6.1	Antenna-Alignment-Aid	6-14
6.6.2	Monitor-Coverage	6-15
6.6.3	Monitor-Flow	6-15
6.6.4	Monitor-Link – Display Link	6-15
6.6.5	Show-Table	6-17
6.6.5.1	Status Table	6-17
6.6.5.2	Radios Table	6-17
6.6.5.3	Ethernet-Stations Table	6-17
6.6.5.4	Econsole Table	6-19
6.6.5.5	Properties	6-19
6.6.6	Spectrum-Analysis	6-19
6.6.7	Time-Analysis	6-19
6.7	FILE UTILITIES	6-20
6.7.1	Console-Speed-Bps	6-20

6.7.2	Copy-File	6-20
6.7.3	Delete-File	6-21
6.7.4	Directory.....	6-21
6.7.5	Download-File.....	6-21
6.7.6	Run-File	6-22
6.7.7	Set-Default-Program.....	6-22
6.8	EVENT LOGGING COMMANDS	6-22
6.8.1	Clear-Log	6-22
6.8.2	Display-Log.....	6-23
6.8.3	Max-Event.....	6-23
6.9	MISCELLANEOUS COMMANDS	6-24
6.9.1	Date	6-24
6.9.2	Help [Command Name].....	6-25
6.9.3	History.....	6-25
6.9.4	License.....	6-25
6.9.5	Logout.....	6-25
6.9.6	Reboot	6-25
6.9.7	Time	6-26
6.9.8	Version.....	6-26
	SECTION 7.....	6-1
7.0	NETWORK MANAGEMENT	7-1
7.1	TELNET	7-1
7.1.1	General	7-1
7.1.2	Starting a Telnet Session.....	7-1
7.1.3	Telnet Security.....	7-2
7.2	SNMP	7-2
7.2.1	Command Line Interface Verses SNMP.....	7-2
7.2.2	SNMP Description	7-3
7.2.3	Security Considerations in SNMP	7-3
7.2.4	Examples of Network Management Systems.....	7-4
7.2.5	A53350 and A53355 Management Information Base (MIB).....	7-4
7.3	udp command and data interface.....	7-5
7.3.1	Purpose.....	7-5
7.3.2	UDP Command Packet Format	7-5
	SECTION 8.....	7-1
8.0	ANTENNA CHARACTERISTICS, SITE SELECTION & PATH ANALYSIS	8-1
8.1	RF LINK DESIGN	8-1

8.1.1	Antenna Selection.....	8-1
8.1.2	Antenna Types.....	8-1
8.1.3	Directionality	8-2
8.1.4	Gain	8-2
8.1.5	Polarization	8-3
8.1.6	Antenna Orientation.....	8-3
8.2	RF PATH ANALYSIS.....	8-4
8.2.1	Line-of-Sight Requirements.....	8-4
8.2.2	Earth Curvature	8-5
8.2.3	Fresnel Zone.....	8-5
8.2.4	Atmospheric Refraction	8-6
8.2.5	Clearing Obstructions	8-7
8.3	RF LINK BUDGET CALCULATIONS.....	8-7
8.3.1	Transmit Power.....	8-8
8.3.2	Antenna Gain.....	8-9
8.3.3	Receive Signal Strength	8-9
8.3.4	Receive Sensitivity.....	8-9
8.3.5	Fade Margin.....	8-10
8.3.6	Cable Loss (Attenuation) – Manual Calculation	8-10
8.3.7	Connector Loss.....	8-11
8.4	ANTENNA GROUNDING AND PROTECTION.....	8-11
APPENDIX A		A-1
APPENDIX B		B-1
APPENDIX C		C-1
APPENDIX D		D-1
APPENDIX E		E-1
APPENDIX F		F-1

LIST OF FIGURES

Section	Title	Page
Figure 1-1	A53350 and A53355 ESSR Pole and Wall Mount Installations	1-1
Figure 1-2	Pole Mount Bracket Installation	1-6
Figure 1-3	Pole Mounting.....	1-7
Figure 1-4	Wall Mounting.....	1-8
Figure 1-5	A53350/A53355 Construction and Connection Locations.....	1-9
Figure 1-6	CAT-5 Outdoor Interconnect Power/Data Cable Diagram	1-13
Figure 2-1	Cluster-Hub Point to Multipoint Network	2-1
Figure 8-1	Earth Curvature, Fresnel Zone and Antenna Heights	8-4
Figure 8-2	Fresnel Zone Calculator	8-5
Figure 8-3	Fresnel Zone Definition	8-5
Figure 8-4	RF Link Budget Calculator.....	8-8

LIST OF TABLES

Section	Title	Page
Table 1-1	A53350 Included Components	1-5
Table 1-2	A53355 Included Components	1-5
Table 1-3	A53350/A53355 Connectors.....	1-10
Table 1-4	J2 Pin Assignments – 3-Pin Auxiliary Port Connector.....	1-10
Table 1-5	Power Inserter Description (AC or DC Input)	1-11
Table 1-6	“To LAN” (Data In) Ethernet Connector Pin Assignments.....	1-12
Table 1-7	“To Radio” (P+ Data Out) Ethernet Connector Pin Assignments	1-12
Table 1-8	Indoor/Outdoor CAT-5 Cable Components	1-14
Table 1-9	A53350/A53355 Radio Accessories	1-15
Table 1-10	Pre-configured CAT-5 Power / Data Cables for A53350/A53355 Radio.....	1-15
Table 1-11	Pre-configured CAT-5 Power/Data Tilt-Over Tower and House Cables	1-16
Table 3-1	Antenna Types.....	3-1
Table 3-2	Maximum Output Power (dBm)	3-4
Table 3-3	900 MHz – Minimum Distance Calculation to Avoid Antenna Radiation Hazard	3-5
Table 3-4	2.4 GHz – Minimum Distance Calculation to Avoid Antenna Radiation Hazard	3-5
Table 4-1	Common Configuration Parameters	4-4
Table 5-1	File Utility Command Summary	5-1
Table 6-1	Encryption Key Lengths.....	6-7
Table 6-2	Channel and RF Speed Ranges.....	6-10
Table 6-3	Zone Codes and Offsets.....	6-24
Table 7-1	UDP Command / Reply Packet Information	7-6
Table 7-2	Reply Code Field	7-6
Table 8-1	Antenna Types Available From Siemens	8-1
Table 8-2	900 MHz and 2.4 GHz Antenna Heights (Meters) to Clear the Earth and 60% of the Fresnel Zone	8-6
Table 8-3	Antenna Heights (Feet) to Clear the Earth and 60% of the Fresnel Zone	8-6
Table 8-4	RF Speed/Receiver Sensitivity	8-10
Table 8-5	Loss at 2.4 GHz and 900 MHz for Standard Coaxial Cable Types	8-10
Table 8-6	Attenuation Loss Per Connector Type.....	8-11
Table 8-7	Lightning Arrester / Surge Protection.....	8-12

NOTES, CAUTIONS, AND WARNINGS

Throughout this manual, notes, cautions, and warnings are frequently used to direct the reader's attention to specific information. Use of the three terms is defined as follows:

WARNING

WARNING
INDICATES A POTENTIALLY HAZARDOUS SITUATION WHICH, IF NOT AVOIDED, COULD RESULT IN DEATH OR SERIOUS INJURY. WARNINGS ALWAYS TAKE PRECEDENCE OVER NOTES, CAUTIONS, AND ALL OTHER INFORMATION.

CAUTION

CAUTION
REFERS TO PROPER PROCEDURES OR PRACTICES WHICH IF NOT STRICTLY OBSERVED, COULD RESULT IN A POTENTIALLY HAZARDOUS SITUATION AND/OR POSSIBLE DAMAGE TO EQUIPMENT. CAUTIONS TAKE PRECEDENCE OVER NOTES AND ALL OTHER INFORMATION, EXCEPT WARNINGS.

NOTE

NOTE
Generally used to highlight certain information relating to the topic under discussion.

If there are any questions, contact Siemens Industry, Inc. Application Engineering.

ELECTROSTATIC DISCHARGE (ESD) PRECAUTIONS

Static electricity can damage electronic circuitry, particularly low voltage components such as the integrated circuits commonly used throughout the electronics industry. Therefore, procedures have been adopted industry-wide which make it possible to avoid the sometimes invisible damage caused by electrostatic discharge (ESD) during the handling, shipping, and storage of electronic modules and components. Siemens Industry, Inc. has instituted these practices at its manufacturing facility and encourages its customers to adopt them as well to lessen the likelihood of equipment damage in the field due to ESD. Some of the basic protective practices include the following:

- Ground yourself before touching card cages, assemblies, modules, or components.
- Remove power from card cages and assemblies before removing or installing modules.
- Remove circuit boards (modules) from card cages by the ejector lever only. If an ejector lever is not provided, grasp the edge of the circuit board but avoid touching circuit traces or components.
- Handle circuit boards by the edges only.
- Never physically touch circuit board or connector contact fingers or allow these fingers to come in contact with an insulator (e.g., plastic, rubber, etc.).
- When not in use, place circuit boards in approved static-shielding bags, contact fingers first. Remove circuit boards from static-shielding bags by grasping the ejector lever or the edge of the board only. Each bag should include a caution label on the outside indicating static-sensitive contents.
- Cover workbench surfaces used for repair of electronic equipment with static dissipative workbench matting.
- Use integrated circuit extractor/insertor tools designed to remove and install electrostatic-sensitive integrated circuit devices such as PROM's (OK Industries, Inc., Model EX-2 Extractor and Model MOS-40 Insertor (or equivalent) are highly recommended).
- Utilize only anti-static cushioning material in equipment shipping and storage containers.

For information concerning ESD material applications, please contact the Technical Support Staff at 1-800-793-7233. ESD Awareness Classes and additional ESD product information are also available through the Technical Support Staff.

GLOSSARY

TERM	DESCRIPTION
AAR:	Association of American Railroads – An organization that establishes uniformity and standardization among different railroad systems.
ACSES:	Advanced Civil Speed Enforcement System
AREMA:	American Railway Engineering and Maintenance-of-way Association
Aspect:	(Signal Aspect) The appearance of a fixed signal conveying an indication as viewed from the direction of an approaching train. A cab signal conveying an indication as viewed by an observer in the cab.
ATCS:	Advanced Train Control System – An industry standard used in equipment communications.
BCM:	Base Control Module
BCP:	Base Communication Package, or Base Station
Boot:	Startup sequence for the microprocessor. On the GEO system this can be accomplished by removing then reseating the CPU module or by pulling the 30 A chassis fuse for a few seconds.
CAD:	Computer Aided Dispatch. An automated system for processing dispatch business and automating many of the tasks typically performed by a dispatcher. Abbreviated CAD (not to be confused with computer-aided design which is also known as CAD) is application software with numerous features and functions.
CDL:	Control Descriptor Language – The programming language used by application engineers to customize operation, settings, and behavior.
CDMA:	Code Division Multiple Access. A protocol used in cellular telephony.
Checksum:	A simple way to protect the integrity of data by detecting errors in data that are sent through space (telecommunications) or time (storage). It works by adding up the basic components of a message, typically the asserted bits, and storing the resulting value. Anyone can later perform the same operation on the data, compare the result to the authentic checksum and (assuming that the sums match) conclude that the message was most likely not corrupted.
CETC:	Centralized Electrification & Train Control
CLS:	Color Light Signal – The GEO module used to control and monitor Color Light Signals.
Configuration File:	When changes are made to the default settings in the MCF (Master Configuration File), the custom settings are maintained in the configuration file.
CPU III:	Next Generation GEO central processing unit (CPU) module.
CRC:	Cyclical Redundancy Check – Used to determine that data has not been corrupted.
CTC:	Centralized Traffic Control. This is also known as CAD for Computer Aided Dispatch. This is the system in the office used to control and monitor the railroad signaling system.
DATAGRAM:	In general, any ATCS packet. Several types of datagrams are defined for specific functions within an ATCS environment.
dB:	Decibels
dB _i	Abbreviation for decibels referenced to an isotropic (unipole) antenna.
dB _m	Abbreviation for decibels above (or below) one milliwatt.

TERM	DESCRIPTION
DC offsets:	Condition in which one rail is kept at one voltage relative to the other even when the track circuit is disconnected.
Debounce:	The amount of time an input must remain constant to be considered a valid input. Debounce prevents random spikes of electrical energy from energizing an input.
DIAG.:	Diagnostic
DHCP	Dynamic Host Configuration Protocol – An Internet protocol for automating the configuration of computers that use TCP/IP. DHCP can be used to automatically assign IP addresses, to deliver TCP/IP stack configuration parameters such as the subnet mask and default router, and to provide other configuration information. Note: DHCP on this radio only works in conjunction with Siemen’s Wayside Access Gateway (WAG).
DNS:	Domain Name Server
DOT Number:	Department of Transportation crossing inventory number assigned to every highway-railroad crossing. The number consists of six numbers with an alpha suffix.
Drop Delay	An internal delay time between when a function is ordered off and when it actually de-energizes.
DSU:	Data Service Unit
DT:	Diagnostic Terminal - Safetran’s PC-based diagnostic software.
DTMF:	Dual Tone Multi-Frequency - The tones on a telephone or radio keypad.
ECD:	External Configuration Device – The non-volatile memory device used for storing the module configuration file.
Echelon®:	A Local Area Network, LAN, used by Safetran equipment.
EEPROM:	Electrically Erasable Programmable Read-Only Memory. A type of non-volatile memory used in computers and other electronic devices to store small amounts of data that must be saved when power is removed. When larger amounts of static data are to be stored, a specific type of EEPROM called a flash memory is used.
ELS:	Serial Link extension board
EMP:	Edge Messaging Protocol. A common message format used for edge integration. Examples of integration edges are wireless transports and various messaging systems that may be used by the various railroads (e.g., using EMP to communicate between mobile applications and back office applications using wireless communications). EMP defines the message format, header, and operating rules which facilitate interoperable message transmission, reception, decoding, and routing.
Ethernet	An IEEE 802.3 standard for contention networks. Ethernet uses a bus or star topology and relies on the form of access known as Carrier Sense Multiple Access with Collision Detection (CSMA/CD) to regulate communication line traffic. Data is transmitted in variable-length frames containing delivery and control information and up to 1500 bytes of data. The Ethernet standard provides for baseband transmission at 10 or 100 megabits per second.
Firmware:	Software saved in ROM within a module and moved into main memory RAM for runtime use when the system is powered up.

TERM	DESCRIPTION
FRA:	Federal Railroad Administration. The purpose of FRA is to: promulgate and enforce rail safety regulations; administer railroad assistance programs; conduct research and development in support of improved railroad safety and national rail transportation policy; and consolidate government support of rail transportation activities.
GCP:	Grade Crossing Predictor – A train detection device used as part of a highway-railroad grade crossing warning system to provide a relatively uniform warning time.
GEO [®] :	Geographic Signaling System - GEO [®] is vital microprocessor-controlled signaling equipment manufactured by Safetran Systems Corporation. It monitors and controls switches, signals, and relays at wayside locations on the railroad.
GENI (F):	Genisys Field Protocol
GENI (O):	Genisys Office Protocol
GFT:	Ground Fault Tester – An optional external device connected to the Echelon LAN that constantly monitors up to two batteries for ground faults and indicates battery status.
GMT:	The time as measured on the prime meridian running through Greenwich, England: used in England and as a standard of calculation elsewhere. Also called Greenwich Mean Time, Greenwich Civil Time, Universal Time
GOL:	Geographic Object Library
GPS:	Global Positioning System.
HMAC:	Keyed-Hash Message Authentication Code. A type of message authentication code (MAC) calculated using a specific algorithm involving a cryptographic hash function in combination with a secret key.
HS:	Home Signal
Hz:	Hertz – Common reference for cycles per second or flashes per second.
Interconnection:	The electrical connection between the railroad active warning system and the traffic signal controller for the purpose of preemption.
IP:	Internet Protocol - ISO Model Layer 3 (network) protocol that performs proper routing of packets.
ITC:	Interoperable Train Control
ITCM:	Interoperable Train Control Message.
Interlocking:	An automatic or manual arrangement of signals and appliances so interconnected that their movements must succeed each other in proper sequence and for which interlocking rules are in effect.
IO or I/O:	Input/Output
kHz:	Kilohertz – 1000 Hz or 1000 cycles per second.
LAN:	Local Area Network – A limited network where the data transfer medium is generally wires or cable.
LCP:	Local Control Panel – A control and display interface device that allows field personnel to perform maintenance and troubleshooting procedures at a location.

TERM	DESCRIPTION
LED:	Light-Emitting-Diode - A solid-state indicator.
LIN:	Line - The GEO module used to transmit and receive coded track patterns over cable.
LNW	Linear Network topology.
LOD:	Light Out Detector - A device that monitors current flowing in a circuit such as a signal light, switch, etc., for the purpose of detecting a fault condition in the circuit.
LOR:	Lamp Out Relay - A GEO status indication using the DTU or the maintainer's interface that a signal lamp filament has been tested with current and failed.
LUI:	Local User Interface – Refers to the character display and keypad on the front panel of Safetran equipment.
MCF:	Module Configuration File
MEF:	Module Executable File
Module:	Physical package including PCBs and input/output terminals for connecting to external devices and equipment.
NTP:	Network Time Protocol. The NTP is a protocol used to synchronize the clocks in millions of servers, workstations and PCs of the public internet and private networks.
OCG:	Office Communication Gateway
OCE:	Office Configuration Editor – A program used to create configuration package files (Pac files) for iVIU PTC GEO, iVIU, VIU, GEO, CPU III, and GCP equipment.
Out Of Service:	The process for taking one or more pieces of equipment out of service for repair and/or maintenance.
Pac File:	A configuration Package File that can either be created in the office using the OCE.
PCB:	Printed Circuit Board
Pick Up Delay:	An internal delay time between when an input receives the signal to pick up and when it actually responds.
PTC:	Positive Train Control. An automated control system for railways that ensures the safe operation of rail vehicles using data communication between various control entities that make up the system.
PiP / PnP	Point to Point / Point to Multi-Point topology
Reboot:	To cause the system to restart by removing power for a few seconds, then reapplying power.
RJ-45:	Industry standard Ethernet port
RIO:	Relay Input Output Module
RS232:	Industry standard serial port.
RS-485:	A higher speed version of RS-232 that supports longer distances and multiple devices.
RTU:	Remote Telemetry Unit
RX:	Receive
RXD:	Receive Data

TERM	DESCRIPTION
Serial bus:	The communication path that carries messages between the CPU and I/O modules installed in the GEO chassis. The serial bus is a set of solder runs on the motherboard (backplane) of the chassis.
Signal aspect:	The appearance of a fixed signal conveying an indication as viewed from the direction of an approaching train; the appearance of a cab signal conveying an indication as viewed by an observer in the cab.
SIN:	Site (Subnode) Identification Number - A twelve-digit ATCS address representing the module as a subnode on the network.
SNMP:	Simple Network Management Protocol. SNMP is an Internet-standard protocol for managing devices on IP networks.
SNTP:	Simple Network Time Protocol. A simplified version of NTP where storage of state data is not required
SSH:	Secure Shell. SSH is a network protocol for secure data communication and remote command execution.
TCP/IP Network:	Transmission Control Protocol / Internet Protocol. The suite of communications protocols used to connect hosts on the Internet. TCP/IP uses several protocols, the two main ones being TCP and IP. TCP/IP is built into the UNIX operating system and is used by the Internet, making it the de facto standard for transmitting data over networks.
TDD	Radios setup in Point to Point or Point to Multi-Point configuration operates in Time Division Duplex (TDD) mode using a configurable size time slot.
Telnet	A protocol that enables an Internet user to log on to and enter commands on a remote computer or device linked to the Internet, as if the user were using a text-based terminal directly attached to that computer or device. Telnet is part of the TCP/IP suite of protocols. Also, a client program that implements the Telnet protocol.
Track circuit:	Defined by AREMA as "An electrical circuit of which the rails of a track form a part." A track circuit's limits are established by the use of insulated rail joints.
TRK:	Track – The GEO module used to transmit and receive coded track patterns for railroad track circuits.
True RMS AC+DC:	A scale on a multimeter that measures the effective combined AC and DC portions of the total voltage. Used to measure the pulsed output of a crossing controller. Measured as VRMS.
TSR:	Temporary Speed Restriction
TX:	Transmit
TXD:	Transmit Data
UAX:	Acronym for Upstream Adjacent Crossing (Xing). UAX inputs are used to receive prediction information from an upstream GCP as inputs to a downstream GCP when insulated joints are in the approach circuit.
UCN:	Unique Check Number – A number is used to detect file corruption.

TERM	DESCRIPTION
UDP:	User Datagram Protocol - A transport protocol used primarily for the transmission of network management information. Not as reliable as TCP.
ULCP:	Universal Local Control Panel – Same as LCP.
USB Port:	Universal Serial Bus Port
USB Drive:	Types of memory devices that plug into a USB port. These devices are commonly called flash drives or memory sticks.
UTC:	Coordinated Universal Time.
VHF Communicator:	Communications device used for remote operations and calibration as well as data communications.
VIU:	Vital Interface Unit. A device that monitors switch positions and signal aspects and then generates vital status messages reflecting the current state of the monitored equipment.
VLAN:	Virtual Local Area Network
VLO:	Vital Lamp Output – A software-driven vital hardware output which drives a lamp on a Colorlight Signal to display a commanded aspect and verifies the lamp is operational (not shorted or out).
VLP:	Vital Logic Processor -- The processor mounted on the CPU module that is responsible for vital processing.
VPI:	Vital Parallel Input – A vital input to a module, designed primarily to read the state of a vital signaling relay.
VRMS:	Volt Root Mean Square – See True RMS AC + DC above.
VTP:	Virtual Local Area Network (VLAN) Trunk Protocol. A Cisco proprietary Layer 2 messaging protocol that manages the addition, deletion, and renaming of VLANs on a network-wide basis. VTP reduces administration in a switched network. When you configure a new VLAN on one VTP server, the VLAN is distributed through all switches in the domain. This reduces the need to configure the same VLAN everywhere.
WAG	Wayside Access Gateway – Siemens assembly A53457 converts Echelon messages to Ethernet messages allowing Siemens equipment to use Ethernet Spread Spectrum radios for communications. WAG assembly A53457 also converts Echelon received messages to RS232 messages allowing the system to use modems for communication between Siemens equipment.
WAMS:	Wayside Alarm Management System – An office based application that communicates with and receives data from specially equipped crossings.
WCC/FPD:	Wayside Cluster Controller/Field Protocol Device. The WCC/FPD is often referred to as the Packet Switch. This equipment manages clusters of base stations and other communications links to the field. The WCC/FPD is installed in the office.
WCCMaint:	Software that runs on a PC used to configure and manage a network of WCC/FPD equipment. WCCMaint is often used to manage other communications equipment as well such as WCPs and BCPs.

TERM	DESCRIPTION
WIU:	Wayside Interface Unit. Term used to refer to the VIU in PTC applications.
WSM:	Wayside Status Messages. Messages in EMP format reflecting the status of vital functions at a wayside location. These vital functions include signal aspects and switch positions.

SECTION 1

PRODUCT DESCRIPTION

1.0 PRODUCT DESCRIPTION

1.1 RADIO OVERVIEW

The A53350 900 MHz and A53355 2.4 GHz Ethernet Spread Spectrum Radio is a license free radio that can be used to bridge Ethernet LAN's (Local Area Networks) across distances ranging from a few hundred feet to 30 miles (48 Km) and beyond.

This Installation & Operation Manual covers a specific topology consisting of a point-to-multipoint network with multiple hubs that provide hub-redundancy, RF-Link redundancy, and increased geographic coverage. This operation requires the radios to be operating a different firmware from the generic firmware that supports the Mesh/Tree network. All other topologies are detailed in the A53350 900 MHz and A53355 2.4 GHz Ethernet Spread Spectrum Radio Manual (Siemens document number: COM-00-10-15).



WARNING

THE A53350 AND A53355 ESSR ARE NON-VITAL PRODUCTS. CAUTION MUST BE TAKEN WHEN INTERFACING THE A53350 OR A53355 ESSR TO ANY VITAL SIGNAL OR CROSSING EQUIPMENT AS THE A53350 OR A53355 ESSR CAN NOT BE USED TO PERFORM, EITHER DIRECTLY OR INDIRECTLY, ANY VITAL FUNCTIONS. ENSURE THE A53350 OR A53355 ESSR IS INSTALLED PER MANUFACTURER'S INSTRUCTIONS, AND/OR ALL EQUIPMENT INTERCONNECTIONS ARE IN COMPLIANCE WITH RAILROAD PROCEDURES AND SPECIFICATIONS.



Outdoor Pole Mount



Indoor Wall Mount

Figure 1-1 A53350 and A53355 ESSR Pole and Wall Mount Installations

The A53355 is a Direct Sequence Spread Spectrum radio operating in the Industrial Scientific and Medical (ISM) 2.4 GHz band from 2400 to 2483 GHz and the A53350 on the ISM 900 MHz band from 902 MHz to 928 MHz. It is designed to provide a robust link under adverse conditions, often encountered in this unlicensed band. This includes the following features:

1. All the electronics are housed in an environmentally sealed enclosure rated for outdoor installation. The unit can be mounted in close proximity to the antenna, which increases system performance by avoiding RF cable losses or expensive rigid coax cables. The radio receives power over the CAT5 Ethernet cable.
2. The radio RF bandwidth is much narrower than other unlicensed devices in the 900 MHz or 2.4 GHz bands. This has several advantages, namely (i) the radio sensitivity is greatly improved allowing longer ranges, (ii) there are a much larger number of non-overlapping channels to choose from, and (iii) it is much easier to find an unused gap in a crowded spectrum.
3. For long range links in a crowded spectrum the most desirable receive frequencies at each end of the link are often different. In the A53350 or A53355, transmit and receive frequencies can be selected independently of each other.
4. The radio incorporates spectrum analysis and timing analysis tools, which allow the operator to quickly perform a survey of the RF environment without the need for spectrum analyzers.
5. Unique antenna alignment aid provides audio feedback proportional to the RSSI, freeing the installer's hands to adjust and tighten the antenna without having to hold or look at other instrumentation. (Requires auxiliary port audio adapter cable, Siemens P/N: Z706-00259-0000).

The radio implements a transparent bridge algorithm, where each unit automatically learns the addresses of all stations in the network and forwards over RF only the traffic that needs to be delivered to the remote units. This reduces the RF throughput required by the radio. If the radio is used standalone, an indoor "power inserter" unit combines the power and Ethernet data into a single CAT5 cable connected to the radio. Radio power can also be provided via connection to Siemens' A53457 Wayside Access Gateway (WAG) unit for installation requiring DC isolation or media conversion.

The A53350 or A53355 can be configured over a local serial interface using HyperTerminal, or over the Ethernet using the "Ethernet console" program (Econ) provided on CD. Once a unit is configured with an IP address it is possible to configure and monitor the unit using Telnet or SNMP. The radio firmware, in non-volatile memory, can also be updated remotely.

1.2 ORDERING INFORMATION

1.2.1 Hardware information

The following is the ordering information for the 900 MHz and 2.4 GHz ENET SSR Radios:

900 MHz

9000-53350-X0XX

No WAG	0
WAG	1

	Software	Encryption	Accessories
01	Mesh-Tree 32 Node Encryption Lock	Normal	Pole Clamp
02	ATC (Bombardier) Encryption Lock	Normal	Pole Clamp
03	ATC (Bombardier) Encryption Lock	Normal	Pole Clamp
04	Mesh-Tree 32 Node Encryption Lock	Normal	Pole Clamp
05	Cluster-Hub Encryption Lock	Normal	Pole Clamp
06	Cluster-Hub Encryption Lock	Normal	Euro Power Inserter Pole Clamp
07	Mesh-Tree 32 Node w/Roaming	Normal	Pole Clamp
08	Mesh-Tree 32 Node AES-128 Encryption	High (Export Restrictions)	Pole Clamp
09	ATC (Bombardier) AES-128 Encryption	High(Export Restrictions)	Pole Clamp
10	ATC (Bombardier) AES-128 Encryption	High (Export Restrictions)	Pole Clamp
11	Mesh-Tree 32 Node AES-128 Encryption	High (Export Restrictions)	USA Power Inserter Pole Clamp
12	Cluster-Hub AES-128 Encryption	High (Export Restrictions)	Pole Clamp
13	Cluster-Hub AES-128 Encryption	High (Export Restrictions)	Euro Power Inserter Pole Clamp
14	Mesh-Tree 32 Node w/Roaming AES-128 Encryption	High (Export Restrictions)	Pole Clamp
15	Cluster-Hub 900 MHz Ch Block AES-128 Encryption	High (Export Restrictions)	Pole Clamp
16	Cluster-Hub 900 MHz Ch Block Encryption Lock	Normal	Euro Power Inserter Pole Clamp
17	Cluster-Hub 900 MHz Ch Block Encryption Lock	Normal	DCV Power Inserter Flat Mount
18	Mesh-Tree 900 MHz Ch Block 32 Node w/Roaming Encryption Lock	Normal	Euro Power Inserter Pole Clamp
19	Mesh-Tree Linear Only	Normal	USA ACV Power Inserter Pole Clamp
20	Mesh-Tree 32 Node w/Roaming	Normal	USA ACV Power Inserter Pole Clamp
21	Cluster-Hub 900 MHz Ch Block Encryption Lock	Normal	No Power Supply No Mounting Hardware

2.4 GHz

9000-53355-X0XX

		Software	Encryption	Accessories
No WAG	0	01 Mesh-Tree 32 Node Encryption Lock	Normal	Pole Clamp
WAG	1	02 ATC (Bombardier) Encryption Lock	Normal	Pole Clamp
		03 ATC (Bombardier) Encryption Lock	Normal	Pole Clamp
		04 Mesh-Tree 32 Node Encryption Lock	Normal	Pole Clamp
		05 Cluster-Hub Encryption Lock	Normal	Pole Clamp
		06 Cluster-Hub Encryption Lock	Normal	Euro Power Inserter Pole Clamp
		07 Mesh-Tree 32 Node w/Roaming	Normal	Pole Clamp
		08 Mesh-Tree 32 Node AES-128 Encryption	High (Export Restrictions)	Pole Clamp
		09 ATC (Bombardier) AES-128 Encryption	High(Export Restrictions)	Pole Clamp
		10 ATC (Bombardier) AES-128 Encryption	High (Export Restrictions)	Pole Clamp
		11 Mesh-Tree 32 Node AES-128 Encryption	High (Export Restrictions)	USA Power Inserter Pole Clamp
		12 Cluster-Hub AES-128 Encryption	High (Export Restrictions)	Pole Clamp
		13 Cluster-Hub AES-128 Encryption	High (Export Restrictions)	Euro Power Inserter Pole Clamp
		14 Mesh-Tree 32 Node w/Roaming AES-128 Encryption	High (Export Restrictions)	Pole Clamp
		15 Cluster-Hub AES-128 Encryption	High (Export Restrictions)	USA Power Inserter Pole Clamp
		16 Cluster-Hub Encryption Lock	Normal	USA Power Inserter Pole Clamp
		17 Cluster-Hub Encryption Lock	Normal	DCV Power Inserter Flat Mount
		18 Mesh-Tree 32 Node w/Roaming Encryption Lock	Normal	Euro Power Inserter Pole Clamp
		19 Mesh-Tree 32 Node w/Roaming	Normal	USA ACV Power Inserter Pole Clamp

1.2.2 Firmware Information

The following is the Firmware included with the 900 MHz and 2.4 GHz ENET SSR units. Firmware is subject to change pending upgrades.

9vB50-A01 - (binary zipped file for downloads through the Ethernet port)

9vB50-A02 - (ASCII file for download through the serial port, or via Telnet)

1.3 INCLUDED RADIO COMPONENTS

Table 1-1 shows the components that are typically shipped with each A53350 and Table 1-2 shows the components for the A53355 radio.

Table 1-1 A53350 Included Components

DESCRIPTION	SIEMENS P/N
900 MHz Radio unit (outdoor type).	9000-53350-X0XX
Mounting Bracket Kit for securing the A53350 unit to an outdoor mast.	Z916-00056-0000
CD with this Operator's Manual, Econsole installer program, firmware files, RF Link Budget Calculator and Fresnel Zone Calculator.	Z224-9VA68-A01

Table 1-2 A53355 Included Components

DESCRIPTION	SIEMENS P/N
2.4 GHz Radio unit (outdoor type).	9000-53355-X0XX
Mounting Bracket Kit for securing the A53355 unit to an outdoor mast.	Z916-00056-0000
CD with this Operator's Manual, Econsole installer program, firmware files, RF Link Budget Calculator and Fresnel Zone Calculator.	Z224-9VA68-A01

1.4 POLE MOUNTING BRACKET INFORMATION

The radio is shipped with mounting hardware designed to easily mount the unit onto a pole outdoors. The radio can be secured to poles of up to 2.5 inches (6.3 cm) in diameter.

Before taking the radio into the field, assemble the mounting hardware as follows:

1. Using the two screws provided, secure the flat aluminum plate into the recessed channel on the back of the unit.
2. Thread the L shape bolt into the hole of the V shape bracket. The non-threaded segment of the bolt should be outside of the V bracket.

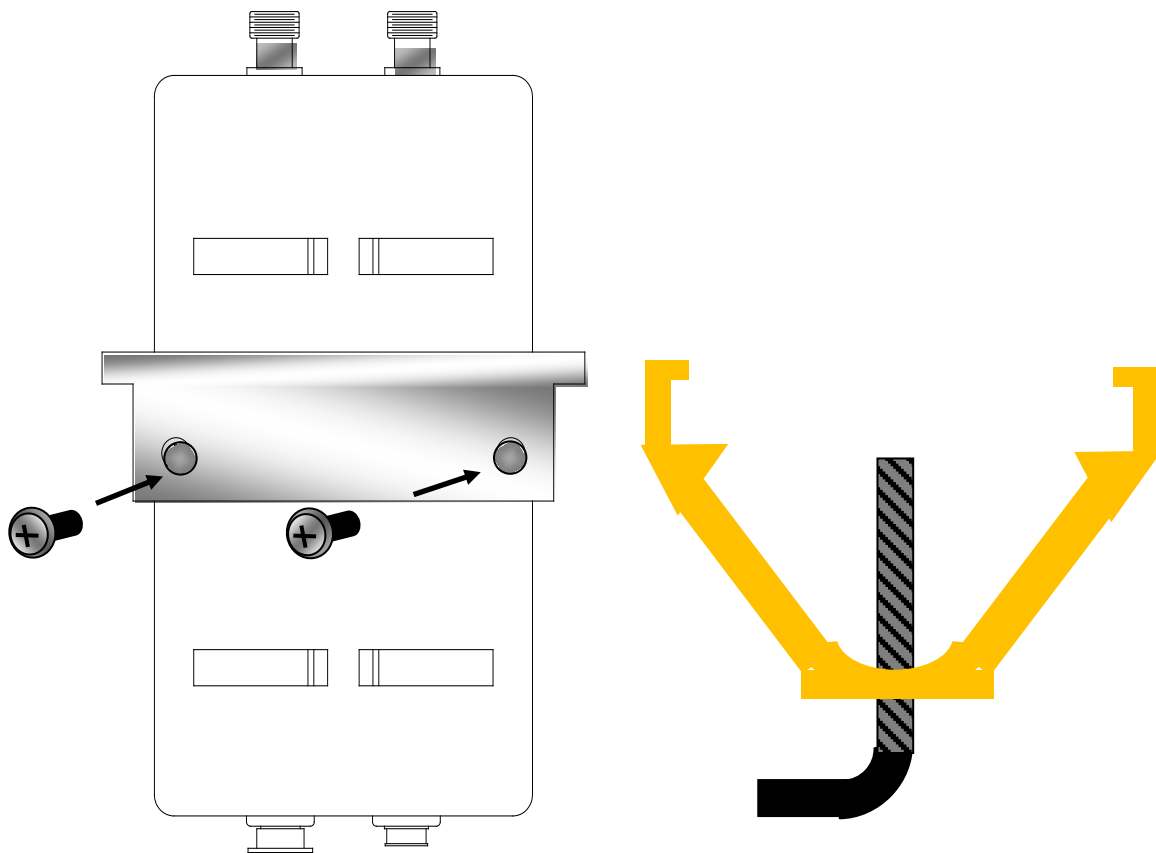
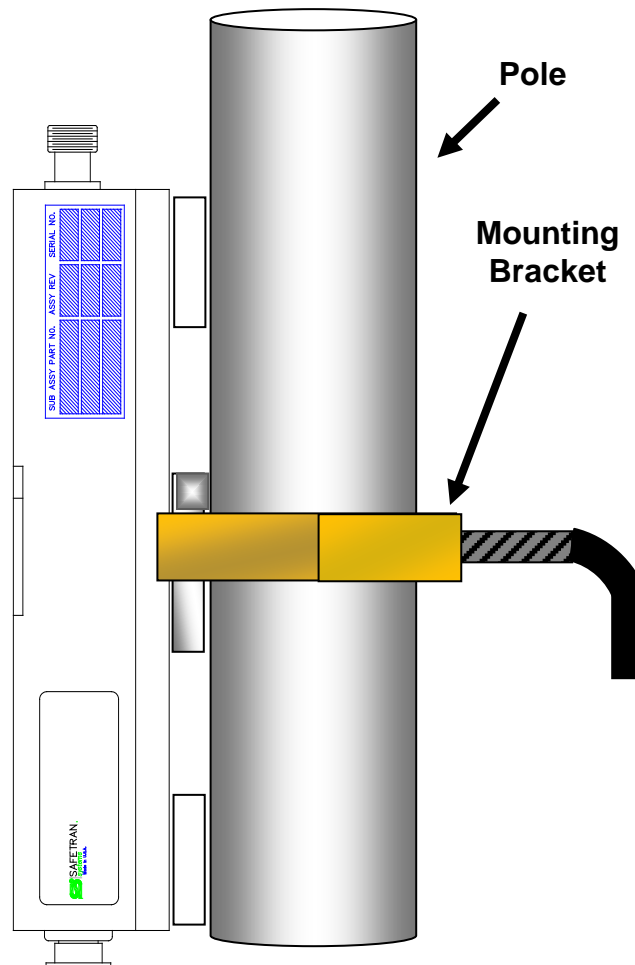


Figure 1-2 Pole Mount Bracket Installation

In order to secure the radio outdoors place the radio against a pole with the RF connectors facing up (see Figure 1-3) the back of the radio enclosure has four guiding feet that prevent it from sliding from side to side.

1. Place the V bracket around the pole, sliding its two grooves up into the aluminum plate on the back of the radio.
2. Once the grooves reach the stops, manually tighten the L shaped bolt so that it “bites” into the pole.



POLE MOUNT

Figure 1-3 Pole Mounting

1.5 WALL MOUNT BRACKET (OPTIONAL)

An optional Wall Mount Bracket is available for indoor installation of the A53350 and A53355 ESSR. To install the wall bracket follow the procedure below:

1. Mark hole locations using the bracket as a template.
2. Mount the screws into the wall allowing enough gap to slide on the bracket.
3. Slide the bracket on to the screws and secure.
4. Mount the A53350 or A53355 ESSR on to the bracket with the RF connectors facing up.

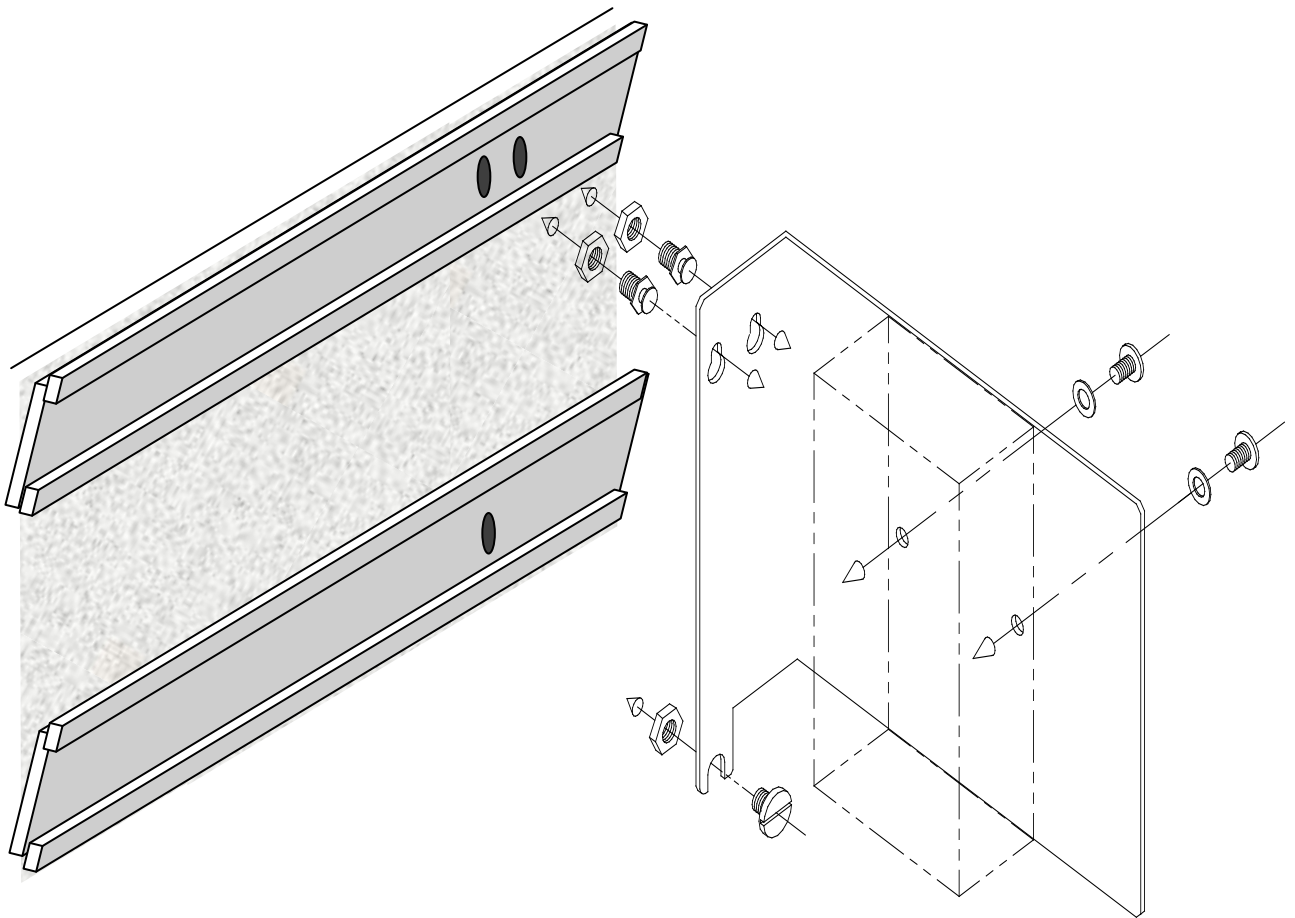


Figure 1-4 Wall Mounting

1.6 RADIO CONNECTORS

Figure 1-5 shows the A53350/A53355 construction. The radio is housed in a rectangular enclosure with two N-female connectors at the top for connection to RF antennas, and two special purpose connectors at the bottom for DC power, serial interface, Ethernet data and control.

The function of each connector is described in Table 1-3.

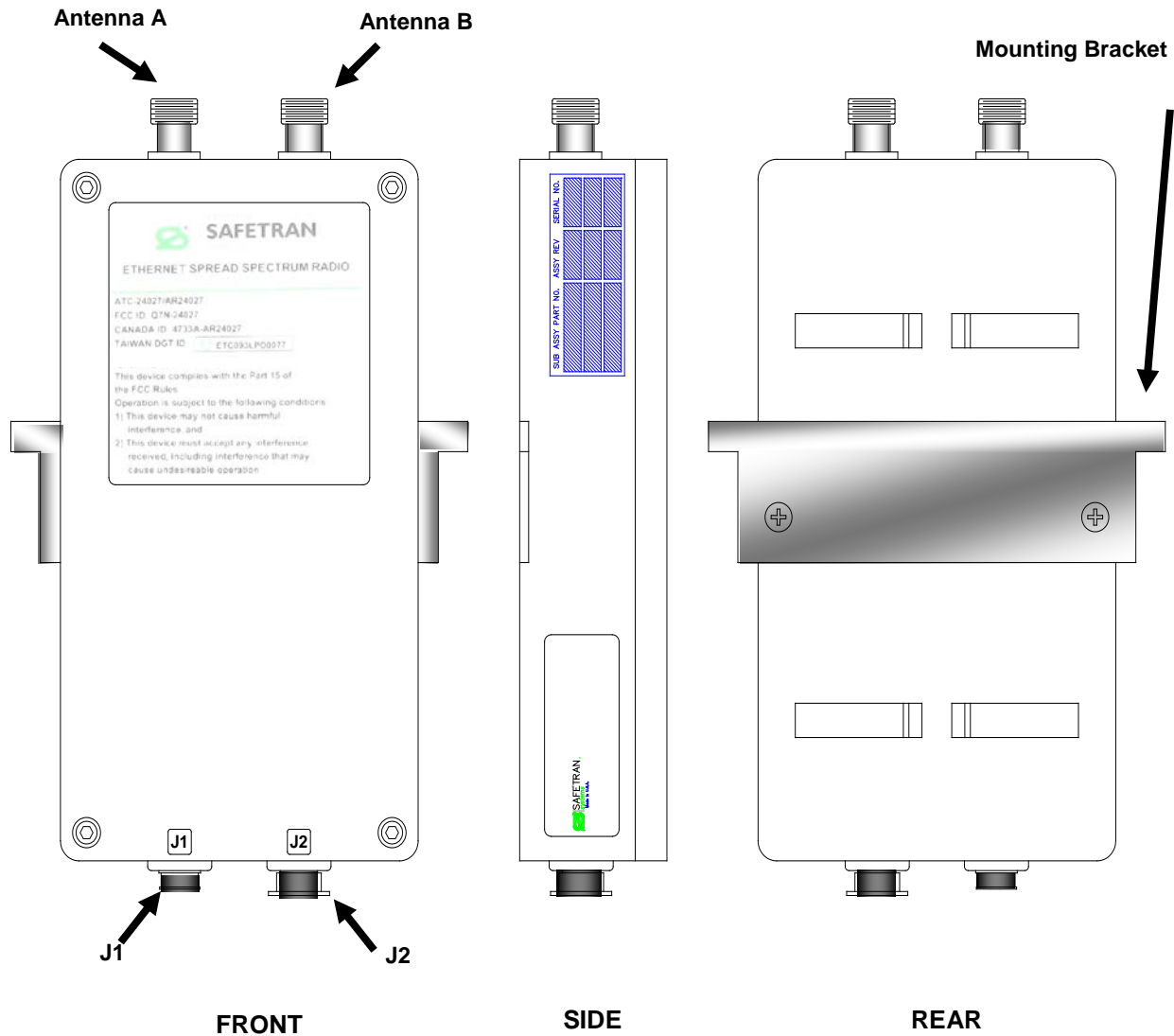


Figure 1-5 A53350/A53355 Construction and Connection Locations

Table 1-3 A53350/A53355 Connectors

CONNECTOR	TYPE	FUNCTION
A	N-Female	900 MHz/2.4 GHz RF connector to antenna A.
B	N-Female	900 MHz/2.4 Ghz RF connector to antenna B.
J1	Lumberg 8-pin male	10/100 Base-T data interface and DC power input (8 pin). Must be connected to a "Power Inserter Unit" or Siemens Wayside Access Gateway (WAG) unit with a CAT 5 cable.
J2	Lumberg 3-pin male	Auxiliary port (3 pin) used as an antenna alignment aid and for RS-232 console port.

An eight conductor CAT 5 cable must be connected between the A53350 or A53355 radio and a Power Inserter or WAG Unit. The wiring for this cable is shown in Figure 1-6 and APPENDIX E.

Table 1-4 shows the pin assignment of the three-pin auxiliary port connector. The unit is shipped with a cover on this connector. The connector can be used during installation as a console port and also as an audio antenna alignment aid. Two cables are available to convert from this non-standard 3-pin connector to either a DB-9 connector (for RS-232 console) or to a standard audio jack (for connection to headphones). See Table 1-10 for Siemens part numbers and APPENDIX E for cable diagrams.

Table 1-4 J2 Pin Assignments – 3-Pin Auxiliary Port Connector

PIN	SIGNAL NAME	ABBR.	DIRECTION
1	Receive Data	RD	Radio Output
2	Transmit Data	TD	Radio Input
3	Ground	GND	

1.7 POWER INSERTER UNIT

The Power Inserter Unit is available in two models: one for AC input, and one for DC input. The AC model includes a 24 VDC regulated power supply for connection to an AC outlet, whereas the DC model is strictly a DC power pass-through.

CAUTION

CAUTION

ENSURE THE INPUT VOLTAGE APPLIED TO THE DC POWER INSERTER DOES NOT EXCEED THE POWER INPUT SPECIFICATIONS OF THE RADIO, AS DAMAGE TO THE RADIO COULD RESULT.

NOTE

NOTE

A Power Inserter is not required in applications where a WAG is supplying power to the radio, unless the cable length exceeds 100 feet.

Each Power Inserter has two RJ45 connectors and a bi-color LED. The two RJ-45 connectors are labeled “To LAN (Data In)” and “To radio (P+ Data Out)”. See following tables for details.

Table 1-5 Power Inserter Description (AC or DC Input)

CONNECTOR / LED	TYPE	FUNCTION
To LAN Data In	RJ-45	10/100 Base-T to be connected to the Local Area Network. Use a straight through cable to connect to a hub and a crossover cable to connect directly to a computer or network node. See Table 1-7 for pin assignments.
To Radio P+ Data Out	RJ-45	Carries the DC power and Ethernet signals to the A53350 or A53355. See Table 1-8 for pin assignments.
LED (AC Power Inserter)	Amber/ Green	Amber: Indicates that the power inserter unit has power input, but no power is being drawn by the radio. Green: Indicates the radio is drawing power.
LED (DC Power Inserter)	Green	Indicates that there is DC power in the pigtail input.



WARNING

THE POWER INSERTER CONNECTOR LABELED “TO RADIO” OR “P+DATA OUT” INCLUDES DC VOLTAGE ON TWO OF THE PINS. IT MUST NOT BE CONNECTED TO A LAN AS THIS VOLTAGE MAY DAMAGE SOME LAN CARDS.

Table 1-6 “To LAN” (Data In) Ethernet Connector Pin Assignments

PIN	SIGNAL NAME	ABBR.	DIRECTION
1	Ethernet Tx	Tx (+)	Radio to Ethernet
2	Ethernet Tx	Tx (-)	Radio to Ethernet
3	Ethernet Rx	Rx (+)	Ethernet to Radio
4	(not connected)		
5	(not connected)		
6	Ethernet Rx	Rx (-)	Ethernet to radio
7	(not connected)		
8	(not connected)		

Table 1-7 “To Radio” (P+ Data Out) Ethernet Connector Pin Assignments

PIN	SIGNAL NAME	ABBR.	DIRECTION
1	Ethernet Tx	Tx (+)	Radio to Ethernet
2	Ethernet Tx	Tx (-)	Radio to Ethernet
3	Ethernet Rx	Rx (+)	Ethernet to Radio
4	VDC	DCV (+)	Power Inserter to Radio
5	VDC	DCV(+)	Power Inserter to Radio
6	Ethernet Rx	Rx (-)	Ethernet to Radio
7	Ground	GND(-)	Power Inserter to Radio
8	Ground	GND(-)	Power Inserter to Radio

1.8 OUTDOOR INTERCONNECT POWER / DATA CABLE (J1)

The interconnect cable between the Power Inserter or Wayside Access Gateway (WAG), and the A53350 or A53355 J1 carries the following signals:

- DC voltage to supply power to the A53350 or A53355.
- 10/100 Base-T Ethernet data.

Both of these signals are carried in a single CAT 5 cable. The system is designed to allow cable lengths up to 100 meters (300 feet).

NOTE For applications using a WAG, a Power Inserter is required when the cable length exceeds 100 feet.

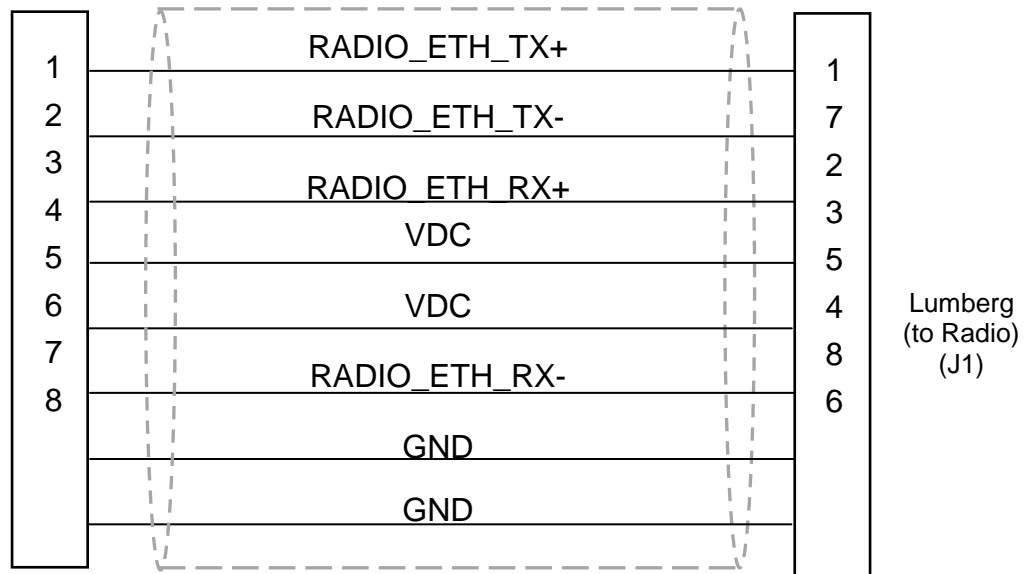


Figure 1-6 CAT-5 Outdoor Interconnect Power/Data Cable Diagram

Table 1-8 lists a few part numbers and sources of appropriate CAT 5 cable components for this application. See APPENDIX E for connector diagrams and assembly instructions.

Table 1-8 Indoor/Outdoor CAT-5 Cable Components

PART NUMBER	MANUFACTURER	DESCRIPTION
7919A	Belden	Shielded outdoor rated cable
18-241-31(gray) 18-241-11 (beige)	Superior Essex	Unshielded outdoor rated cable
5EXH04P24-BK- R-CMS-PV	CommScope	Unshielded outdoor rated cable
2137113 (ivory) 2137114 (gray)	General Cable	Unshielded outdoor rated cable
BC1002	Belden	Unshielded outdoor rated cable
0321-03	Lumberg	3-pin weatherproof connector, female, unshielded
0322-03	Lumberg	3-pin weatherproof connector, female, shielded
0321-08	Lumberg	8-pin weatherproof connector, female, unshielded
0322-08	Lumberg	8-pin weatherproof connector, female, shielded

1.9 RADIO ACCESSORIES

Table 1-9 shows the accessories available for the A53350 or A53355 radio and their Siemens part numbers.

Table 1-9 A53350/A53355 Radio Accessories

DESCRIPTION	SIEMENS P/N
AC Power Inserter Module. (110 VAC input to 24 VDC output)	Z932-00184-0000
DC Power Inserter Module. (24 VDC battery pass-through)	Z932-00186-0000
Auxiliary port 3-pin Console Cable for RS-232 connection.	Z706-00235-0000
Auxiliary port 3-pin Audio Adapter Cable with audio jack. (Used for antenna alignment aid)	Z706-00259-0000
CAT 5 Power / Data Cable for connection between A53350 radio and a Power Inserter Module or Siemens Wayside Access Gateway (WAG).	See Table 1-10
Lightning Arrester / Surge Protector – NF to NF 800 MHz - 2.1 GHz	Z803-00141-0000

1.9.1 Pre-configured Power / Data Cables

For ease of installation, several pre-configured power/data CAT-5 cables of various lengths are available from Siemens. These cables provide the proper wiring with a standard RJ-45 male connector on one end, and a Lumberg 8-pin female connector on the other. Table 1-10 shows a list of available cables and their corresponding Siemens part numbers.

Table 1-10 Pre-configured CAT-5 Power / Data Cables for A53350/A53355 Radio

DESCRIPTION	SIEMENS P/N
20 inch weatherproof CAT-5 power/data cable	Z706-00253-0000
5 foot weatherproof CAT-5 power/data cable	Z706-00236-0000
10 foot weatherproof CAT-5 power/data cable	Z706-00247-0000
20 foot weatherproof CAT-5 power/data cable	Z706-00254-0000
30 foot weatherproof CAT-5 power/data cable	Z706-00255-0000
50 foot weatherproof CAT-5 power/data cable	Z706-00237-0000
100 foot weatherproof CAT-5 power/data cable	Z706-00238-0000
* 200 foot weatherproof CAT-5 power/data cable	Z706-00248-0000
* 300 foot weatherproof CAT-5 power/data cable	Z706-00249-0000

* Power Inserter required

Table 1-11 shows a list of available tilt-over tower and house cables and their corresponding Siemens part numbers.

Table 1-11 Pre-configured CAT-5 Power/Data Tilt-Over Tower and House Cables

DESCRIPTION	SIEMENS P/N
20 foot weatherproof CAT-5 power/data tower cable	Z706-00283-0020
30 foot weatherproof CAT-5 power/data tower cable	Z706-00283-0030
50 foot weatherproof CAT-5 power/data tower cable	Z706-00283-0050
75 foot weatherproof CAT-5 power/data tower cable	Z706-00283-0075
100 foot weatherproof CAT-5 power/data tower cable	Z706-00283-0100
*200 foot weatherproof CAT-5 power/data tower cable	Z706-00283-0200
*300 foot weatherproof CAT-5 power/data tower cable	Z706-00283-0300
50 foot weatherproof CAT-5 power/data house cable	Z706-00284-0050
75 foot weatherproof CAT-5 power/data house cable	Z706-00284-0075
100 foot weatherproof CAT-5 power/data house cable	Z706-00284-0100

* Power Inserter required

SECTION 2 NETWORK TOPOLOGIES AND APPLICATIONS

2.0 NETWORK TOPOLOGIES AND APPLICATIONS

2.1 NETWORK TOPOLOGIES

The A53350 900 MHz and A53355 2.4 GHz Ethernet Spread Spectrum Radio can be deployed in a variety of topologies from a simple point-to-point link to complex networks with multiple hops, redundant nodes, and mobile nodes. This Installation & Operation Manual covers a specific topology consisting of a point-to-multipoint network with multiple hubs that provide hub-redundancy, RF-Link redundancy, and increased geographic coverage. This operation requires the radios to be operating a different firmware from the generic firmware that supports the Mesh/Tree network. All other topologies are detailed in the A53350 900 MHz and A53355 2.4 GHz Ethernet Spread Spectrum Radio Manual (Siemens document number: COM-00-10-15).

2.1.1 Cluster-Hub Point to Multipoint

The cluster hub consists of radios Hub-1 through Hub-N, which are at fixed locations and connected by a wired 100 MHz LAN. The multiple hub radios can be spaced far apart to increase the total RF coverage. Within the region covered by these hubs there may be multiple remote nodes which would typically be mounted on mobile vehicles. On the hub side the fixed user equipment (base-station) connects to the same LAN that interconnects all the hubs. On the mobile nodes the user equipment attaches to the Ethernet port of the remote radios.

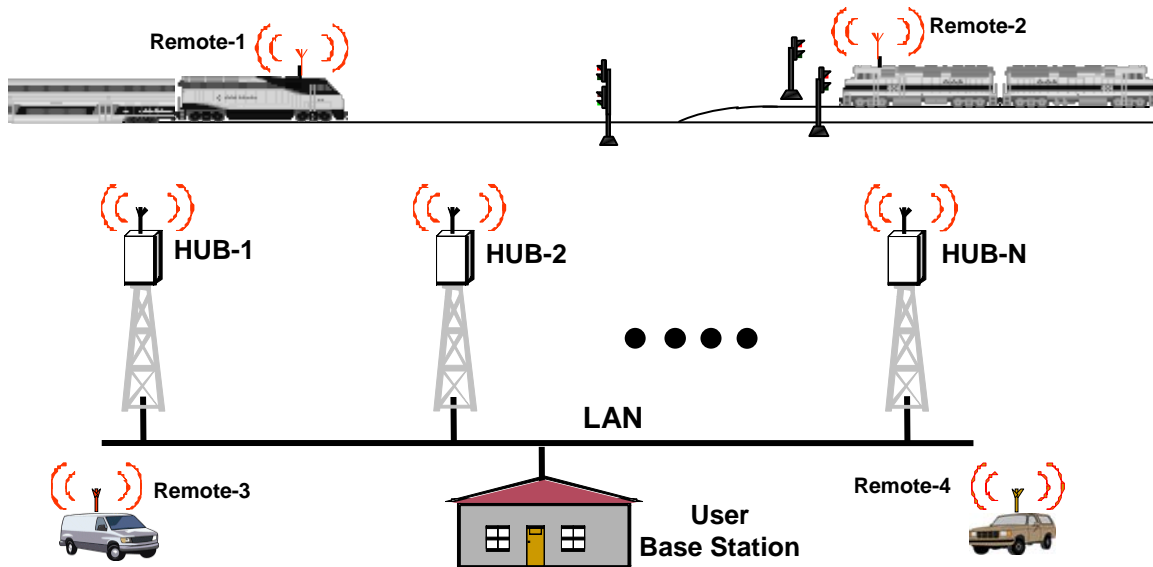


Figure 2-1 Cluster-Hub Point to Multipoint Network

The radio subsystem is designed to provide a reliable Point-to-Multipoint (PmP) communication network between the user base-station and the equipment connected to the remote radios. Once a vehicle is within the RF range of one or more hubs the radio subsystem automatically bridges the vehicle Ethernet LAN to the base-station LAN. The multiple hub radios are used to increase the RF coverage and also as redundant units in the RF communications. The multiple RF transmissions and receptions operate transparently to the user's equipment. User equipment does not require any setup or operational changes to work with multiple hub networks.

All radios are configured to operate on the same frequency channels. There is an outbound channel (for communications between hubs and remotes), and an inbound channel (remotes to hubs). These two channels can be different, although they are typically set to be the same value.

In some applications for this topology there may be two or more regions with adjacent cluster hub PmP networks. In these cases it is necessary to operate the adjacent regions on different channels. Note that the radios do not perform an automatic "hand-off" between the different regions. The user equipment will require the capability to at least change the receive channel of the remote radios so they can disconnect from one network and connect to the next

Below is a list of the major characteristics of the Cluster-Hub PmP network:

- Multiple redundant hub radios, which together form a single "hub" to implement a reliable point-to-multipoint system.
- No single-point-failure among the hub radios. The mastership function is autonomously allocated and gets re-allocated in case of failures.
- Automatic acquisition and deletion of remote radios as vehicles move in and out of the coverage area.
- Selectable number of redundant outbound transmissions.
- Dynamic selection of most favorable hub radios to transmit outbound messages.
- Transparent bridging between base-station LAN and the LAN on the vehicles, with automatic filtering of all redundant RF messages so that the redundancy is invisible to the user equipment attached to the radios.
- Bandwidth allocated on demand to all radios in the system, including dynamic allocation for inbound and outbound traffic.

2.2 FUNCTIONAL OPERATION

2.2.1 Time Division Multiplex Operation

All radios within the coverage area operate in a Time Division Multiplex (TDM) mode, with each radio transmitting on a pre-allocated time interval thereby avoiding all collisions. The overall **cycle time** is fixed (selectable in 20, 40, 60, or 80 ms cycle times), and consists of an **outbound phase** where hub radios transmit, followed by an **inbound phase** where remote radios transmit.

During each cycle radios are allocated zero, one or several contiguous **slots** for transmission. Each slot is approximately 1 msec. The slot allocation is dynamic and based on demand so that radios that have no data to transmit never take more than one slot (if any). Even though the cycle time is fixed the duration of the outbound and inbound phases may vary from cycle to cycle.

2.2.2 Master Hub Radio

Hub radios autonomously select among themselves one radio to assume a master role. This radio performs the following special functions:

- **Cycle synchronization (heartbeat):** The master hub radio runs the TDMA cycle. All other radios synchronize their cycles to this radio. Once per cycle the master hub multicasts, over the Ethernet, a **heartbeat packet** to synchronize all other hub radios. Remote radios synchronize their cycles to the transmissions from the various hub radios.
- **Inbound Packet Aggregator:** All hub radios send any inbound packets received over RF to the master hub. The master discards repeated packets and reassembles fragmented packets. Once an inbound packet is reassembled the master hub forwards it to the user base-station.
- **Outbound packet distribution:** The master hub processes the outbound packets from the base-station and distributes them to a subset of the hub radios for transmission over RF.
- **Scheduler:** The master hub allocates slots to the various radios in the network and multicasts a **schedule** packet for the upcoming cycle informing all radios of the planned schedule.

2.2.3 Master Hub Allocation

The autonomous allocation of the master hub function is achieved as follows: once per second all hub radios multicast, over the Ethernet, a status packet, which is received by all other hub radios. This packet includes the radio unique serial number and whether it is the current master.

Each hub radio continuously listens and records the serial numbers of all other hub radios on the same LAN. From this list it determines if it has the highest serial number in the network. When there is no master in the LAN the radio with the highest serial number assumes the master role.

When a new hub radio joins a network where there is already a master the new radio does not take the master role even if it has the highest serial number. This way you can add or remove most radios from the system with minimal effect on system operation. If the master radio goes off-line then the master function is assumed by another hub radio. When such an event occurs there will be a slight delay and some packet losses as the new master radio reacquires all the remotes. However the system will recover within about two seconds.

The serial number of the master hub radio becomes the ID for that cluster. All hub radios program their RF port address to this value. This way all hub radios receive the RF packets transmitted by remote radios which are addressed to this cluster hub.

In addition to the autonomous selection described above it is possible to configure one radio in the cluster as the preferred master-hub. If that radio is present it will always assume the master role. If there is no radio configured as the master-hub then the algorithm described above selects one hub to take that role. This feature is useful for maintenance and troubleshooting. The master-hub tracks a number of network statistics, so it is useful to know which radio is the master at all times.

2.2.4 Cycle Synchronization

The TDM operation with dynamic time slots requires that all radios in the system run a cycle timer that is synchronized to the master hub radio. This synchronization is achieved in the following manner:

The master hub radio multicasts a **heartbeat** packet once per cycle. The hub radios latch the time when this packet arrives and adjust their cycle timer to stay in sync with the master. For this synchronization to work properly the LAN must provide “prompt and repeatable” delivery of Ethernet packets. A preferred deployment is to use an Ethernet switch with point to point links to each device running at 100 MHz full duplex. These links may use fiber optics if the distance exceeds the maximum Ethernet length for wired connections (100 meters). The switch must have enough performance to switch the packets with minimum delays. Additionally, other than the hub radios, attach as few as possible other equipment to this LAN.

With all hub radios synchronized, the synchronization of remote radios is achieved as follows:

During the outbound phase, each hub radio that was assigned a transmit slot, broadcasts, as the very first packet, a schedule of the inbound slot assignments. This packet includes the time offset within the cycle when this packet is transmitted. The remote radios latch the arrival time of every packet over RF. They then compute the cycle timer error and adjust the cycle timer to stay in sync with the master.

2.2.5 Inbound Packet Flow

A remote radio operates its Ethernet port in promiscuous mode and therefore receives all Ethernet packets. The radio runs a self-learning transparent bridge algorithm, discarding any local traffic packets, and forwarding other packets to the RF port. Any packets generated by the mobile user station addressed to the base-station fall into this latter category and get queued for RF transmission.

The remote radio adds a header to these Ethernet packets that includes a packet sequence number. When the radio has an opportunity to transmit it sends all packets in its RF queue that fit within the slot allocation. If the slot allocation is not enough to transmit all packets, the last packet may be fragmented to fill all of the transmit time available. All RF transmissions from a remote radio are sent to the “cluster address” so that they are picked up by any of the cluster hub radios.

Multiple hub radios may receive the inbound transmissions. These radios forward all received packets to the master hub radio over the Ethernet. The master hub discards the repeated packets or fragments and, for fragmented packets, it reassembles them into a single packet. Once a packet is fully reassembled it forwards a single copy to the user base-station.

When the non-master hub radios forward the inbound packets to the master, they include the information about the RSSI associated with those packets. The master hub uses this information in the distribution of the outbound packets as explained in the next section.

2.2.6 Outbound Packet Flow

The master hub operates its Ethernet port in promiscuous mode and therefore receives all Ethernet packets in the LAN. It runs a self-learning transparent bridge algorithm, discarding any local traffic packets and processing all others. As part of the bridge algorithm the master keeps a **bridge table** with the addresses of all the user mobile stations that are currently in the RF coverage area. For each entry this table includes the following information:

- Ethernet address of the user mobile equipment
- Identity of the remote radio associated with that equipment
- Time of last message heard from this remote radio
- List of hub radios that received this last message and respective RSSI

The user base-station generates outbound packets addressed to mobile user equipment attached to remote radios. The master hub receives these packets and looks up in the bridge table for the identity of the remote radio associated to the destination address.

The master hub then adds a header to the outbound Ethernet packet, which includes a packet sequence number and a list of the N hub radios that have the strongest RSSI associated with this remote radio. The master hub sends this packet on the Ethernet to a multicast address that is received by all non-master hub radios.

The selected hub radios retrieve the outbound packet (including the sequence number) and queue it up for transmission over RF. All other hub radios that receive this multicast, discard the outbound packet.

As each hub radio has a chance to transmit over RF, it transmits its copy of the outbound packet addressed to the specific remote radio. In this transmission the outbound packet may be fragmented and transmitted across multiple cycles. The remote radio reassembles the outbound packets, discards repeated packets, and sends a single copy of the outbound packet to its Ethernet port. If fragments from different hub radios are lost the remote radio still attempts to piece together a complete packet from the fragments received.

Because of the multiple transmissions of the same packet by different hubs it is possible for the remote radio to receive packets out of order. The remote radios will reorder the packets before sending them out on the Ethernet, such that the original order of the packets is preserved.

You can configure the number of outbound redundant transmissions. As a vehicle moves across the coverage area, only a subset of hub radios (closest to the vehicle) is likely to receive the inbound transmissions. By using the RSSI information as described above the master hub automatically selects the subset of the most favorable hub radios.

The master hub periodically purges inactive entries in the bridge table (there is a configurable inactivity timeout). Therefore, once a vehicle leaves the coverage area, its radio will disappear from the bridge table.

Outbound Packet Latency: Since multiple hubs may transmit each outbound packet at different times, a remote radio may receive packets out of order. When packets are out of order the remote radio must wait to see if the missing packet, transmitted by a different hub, arrives. After a “reasonable” timeout, if the missing packet is not received, the remote assumes that all transmissions of that packet were lost. Subsequent packets that had been queued and waiting are now sent to the host.

When the links are marginal and packets are being dropped, this effect may introduce an outbound latency of as much as 0.5 second. If there is congestion in the network the total delay may be greater.

Note that even when the outbound transmit redundancy is set to one the remote radios still need to wait for a missing packet arriving out of order. This is because the hub covering that remote may change and a packet transmitted by a new hub may arrive before the last packet (or fragment) transmitted by the previous hub.

This missing packet timeout value is 250 ms when you set the transmit redundancy to one, and increases by 100 ms for each additional hub added to the transmit redundancy.

2.2.7 Dynamic Bandwidth Allocation

The inbound transmissions by a remote radio always start with a short **bandwidth request** packet. This packet includes a field with the number of bytes currently queued for RF transmission. Hub radios that receive these packets forward them to the master hub radio over the Ethernet.

With this information the master hub keeps a tally of the total inbound traffic waiting to be transmitted by all the remotes. The master hub also has the same information about outbound traffic, since it processes all the outbound packets generated by the base-station. The total RF outbound traffic is actually the product of all these packets multiplied by the current number of redundant outbound transmissions.

Based on this current demand the master hub first computes the split of the TDD cycle between outbound and inbound. Then the master hub allocates slots for the upcoming cycle, first for the inbound phase and then for the outbound phase. The allocation of the slots is based on a number of rules:

Inbound Slots:

1. First allocate one or more contiguous slots for remote radios that have non-zero bytes queued. Since each RF transmission requires a preamble that occupies a significant air-time, the master hub typically allocates multiple slots to each radio in order to improve efficiency. This may result in some remote radios not being allocated slots in a particular cycle. However those radios will then be allocated their fair number of contiguous slots in a subsequent cycle. Reducing the total number of remote radios that transmit in a given cycle helps the efficiency of the outbound phase as well.
2. Remote radios with zero bytes in their transmit queue are allocated the minimum number of slots every once in a while in order to give them a chance to update their bandwidth request. This frequency for polling idle remote radios is dynamic and depends on current traffic load.

Outbound slots:

1. For each remote radio that got allocated in the inbound phase, allocate the minimum number of slots for each of the N hub radios that currently cover that remote. This provides full redundancy in transmitting the schedule to the intended remote radios.
2. Increase the number of slots to each of the selected hubs based on the outbound traffic that that specific hub must transmit.
3. Allocate any remaining slots to other hub radios that have outbound traffic.

4. Once in a while the master hub also reserves the first slots of the inbound phase for new remote radios to attach to the network. In those cycles every hub radio is assigned to transmit the cycle schedule. This guarantees that this “invitation to join” is heard everywhere in the network.

After assigning the outbound slots the master hub multicasts on the Ethernet the outbound packets that must be transmitted by the various hubs. This is done carefully with the goal of giving the various hubs enough data to completely fill the allocated slots, but no more. Keeping the outbound queues of the various hub radios shallow allows the master hub to respond quickly when a vehicle moves and is covered by different hubs.

Finally, prior to the beginning of a new cycle the master hub multicasts a packet on the Ethernet containing the complete schedule for the upcoming cycle. All the hub radios receive this packet and setup their cycles to start transmitting in the allocated slot. In addition these hub radios retrieve the inbound schedule and format a short RF packet with this information. This **inbound schedule packet** is always broadcast in front of any packets in the RF queue.

The remote radios may receive the inbound schedule from several hub radios. Once they receive this schedule they setup their cycles to transmit in the allocated slots. There is a short dead time between the outbound and inbound phases which allows the first remote radio to get ready to transmit if it received the schedule from the last hub radio.

2.2.8 New Remote Radio Acquisition

Once in a while the master hub allocates the first slots in the cycle for new remote radios to attach to the network.

A remote radio that is not currently attached first synchronizes its cycle to the transmissions from the various hub radios. It then transmits an **attach request** packet the next time that a slot is available for a new node acquisition.

The hub radios that receive this transmission forward the packet to the master hub. The master hub sends an **attach acknowledge** packet to the remote radio through the N hub radios with the strongest RSSI. The master hub also adds the remote radio and any associated stations to its bridge table. That way the fixed base-station will now be able to send packets to this mobile station.

The remote radios also implement a back-off algorithm allowing two new nodes to get attached even if there is a collision in their attach request packets.

2.2.9 Packet Priorities

As packets arrive into a radio from any port, the bridging algorithm determines if the packets need to be transmitted over RF. If so the radio queues the packets into one of several priority queues. Starting with the highest priority the packets are classified as follows:

- Vital packets: These are UDP packets with a specific destination UDP port number. This port number is part of the field programmable radio configuration (see command **>udp**).
- NetCrossing Gateways Serial packets: These are SNAP encapsulated packets containing synchronous serial data generated by the Afar NetCrossing Gateway devices.

- High-Priority: These includes network management packets for “ECON” command sessions, and also IP packets with a value in the “Type-Of-Service” indicating high priority. The radio interprets the IP TOS field per the IETF *differentiated services (DS)* definition as shown below:

0	1	2	3	4	5	6	7
Codepoint			Unused				

When the codepoint field has the value **xxx000**, the three most significant bits are interpreted as **precedence** bits. The radio gives high priority to packets with a precedence field of 6 or 7. In hexadecimal notation this translates into TOS values of E0 and C0.

- Low-priority: All other packets

When the time to transmit over RF arrives, the software always takes packets from the higher priority queues first.

2.3 NETWORK SIZE AND PERFORMANCE

The cluster hub network maximum size is 32 hubs and 29 remotes although most systems use significantly fewer radios. As the network size increases and more radios share the total throughput available, the network may become congested. When using the slower radio models the network capacity will be lower and it may be necessary to limit the network size further.

There are four configurable parameters, listed in the table below, that directly affect the network capacity. It is only necessary to configure these parameters at the master-hub all other radios will change their configuration automatically to match the settings of the master. When changing any of these parameters the software computes, among other things, the resulting maximum number of hubs that can be supported. If that number is less than 3 the software does not accept the new value and gives you a warning. The “show” command lists how many hubs and remotes are currently in the network and also the maximum number of hubs allowed. Whenever changing one of these four parameters it is a good idea to check that the maximum number of hubs allowed is larger than the intended network size.

Parameter	Command	
RF transmit speed	rf-transmit speed=xx	The higher the speed the higher the capacity of the network which increases the maximum number of hubs allowed.
Cycle period	tdd cycle=20,40,60,80	Increasing the cycle period increases capacity and the maximum number of hubs allowed. However it may also increase packet latency.
Cycle split	tdd outbound-transmit= auto,20...80	The auto setting is recommended, which lets the master-hub choose the split depending on traffic patterns. Depending on the values of the other parameters the range for the split value may be narrower than the nominal 20...80. The "tdd" command echoes the current setting and range allowed.
Tx Redundancy	node redundancy=1..4	With redundancy greater than one the hubs transmit all the outbound packets multiple times sequentially. Higher redundancy values force the cycle split to favor outbound traffic which reduces inbound traffic capacity.

Network performance is also be affected by broadcast traffic. Broadcast packets get transmitted, in turn, by every hub that is currently covering one or more remotes. In large networks, with multiple scattered remotes, a broadcast packet may have to be transmitted by many hubs which will contribute to congestion in the network. You can use the "monitor-coverage" command to check how many hubs are currently being used for broadcast. However this number changes as remotes move around.

2.4 ENCRYPTION

NOTE

NOTE

Radios used outside of the U.S. are subject to restrictions on the use of encrypted transmissions using Triple DES and AES-128. Contact Siemens Customer Service for further details.

The radios have the capability of encrypting the payload data transmitted over the air. The User can select the encryption algorithm between DES, Triple-DES and AES-128, and enter a unique key to encrypt and decrypt the data. Refer to the encryption command in section 6.4.2, for complete details.

Turning encryption on has the following impact on the link performance:

1. Increase in the packet size. Block encryption algorithms require the packet length to be a multiple of 8 bytes for DES or Triple-DES and of 16 bytes for AES-128. The radio uses one of those additional bytes to control the truncation of the padded field on the receive side, so there is always at least one added byte. For very long packets this padding may be negligible, but for short packets it can add significant overhead. A worst case scenario would be an Ethernet packet of 64 bytes which, with AES-128 encryption will be padded to 80 bytes.
2. Increase in latency. There is a small delay introduced by the additional processing to encrypt and decrypt data packets. The encrypt + decrypt time for a 100 byte packet is 0.28 ms, for a 1,000 byte packet is 0.62 ms irrespective of the algorithm. The increased packet size referred above can have a larger impact on latency depending on how many bytes were added and the RF transmit speed.

2.5 CHANNEL RESTRICTION

Firmware in the A53350 and A53355 radios enable channel restriction for use outside the U.S. to comply with frequency spectrum rules and regulations. Contact Siemens Customer Service for further information regarding channel restriction options.

SECTION 3

ANTENNA INSTALLATION AND ALIGNMENT

3.0 ANTENNA INSTALLATION AND ALIGNMENT

3.1 ANTENNA INSTALLATION

NOTE

NOTE

The antennas for the A53350 or A53355 must be professionally installed on permanent structures for outdoor operations. The installer is responsible for ensuring that the limits imposed by the applicable regulatory agency (Federal Communications Commission, FCC, or CE) with regard to Maximum Effective Isotropic Radiated Power (EIRP) and Maximum Permissible Exposure (MPE) are not violated. These limits are described in the following sections.

The A53225 or A53350 is typically attached to a pole (with the clamp provided) or rack mounted with the antenna connectors facing up. For optimum performance the radio must be mounted in close proximity to the antenna with a cable run typically under 2 meters (≈ 6 feet). For the A53350 and A53355, the following antenna types are available, as listed in Table 3-1.

Table 3-1 Antenna Types

ANTENNA TYPE	Frequency	GAIN	SIEMENS P/N
Omni-directional	900 MHz	12 dBi	Z913-00032-0000
Yagi	900 MHz	15 dBi	Z913-00017-0000
Parabolic	900 MHz	23.5 dBi	Z913-00051-0000
Radome Protected Yagi	900 MHz	10 dBi	Z913-00015-0000
Omni-directional	2.4 GHz	12 dBi	Z913-00025-0000
Yagi	2.4 GHz	15 dBi	Z913-00038-0000
Grid Parabolic	2.4 GHz	17 dBi	Z913-00037-0000
Grid Parabolic	2.4 GHz	24 dBi	Z913-00023-0000

For the linear network the use of the 15 dBi gain antennas is recommended. Antennas at the end of each link must be mounted such that they have the same polarization, and directional antennas must be carefully oriented towards each other. The choice of polarization (horizontal vs. vertical) is, in many cases, arbitrary. However, many potentially interfering signals are polarized vertically and an excellent means of reducing their effect is to mount the system antennas for horizontal polarization.

Of those antennas listed above, the Parabolic antenna is circular polarization, while the Omni-directional antenna is vertical polarization. The Yagi antenna may be mounted in either horizontal or vertical polarization.

Proper grounding of the antenna is important for lightning protection as well as to prevent electrical noise interference from other sources. The antenna should be mounted to a mast or tower that is well grounded to Earth. Use threaded connectors to mate to the antenna lead connectors and check that all connectors are clean and tight. Use weatherproof connectors in all outdoor couplings. We recommend using Scotch® 2228 Rubber Mastic Tape from 3M (or equivalent) to further weatherproof outdoor connections.

In locations where it is warranted, install lightning protectors at the N type connectors leading to the antennas. The User may also want to install a surge arrester/lightning protection on the Ethernet cable where it connects to the equipment rack. The lightning protectors should be properly grounded. Carefully follow the installation instructions provided by the manufacturer of the lightning protection device used.

3.2 SIEMENS ANTENNA KITS

Siemens offers a wide variety of antenna kits to fit your needs. Each kit contains all the hardware required to install the selected antenna type on a tilt-tower, wood pole, or in a bungalow. Contact Siemens Customer Service for details.

3.3 ANTENNA ALIGNMENT

When mounting the high gain antenna (23.5 dBi), the proper antenna alignment is extremely important since the beam-width of the antenna is very narrow. Once a rough alignment is performed and the link is in operation, use the “monitor-link” and “antenna-alignment-aid” commands. Type:

```
> monitor-link
```

in order to update, every half second, the link statistics including the RSSI level (this will be in association with two neighbors if in LNW mode). The antennas can then be aligned so that the respective RSSI is maximized. In the PmP topology, the hub antenna is typically an omni and does not need to be carefully aligned. But if it is necessary to align a hub radio antenna for maximum signal from a particular remote, use the command:

```
> monitor-link node=N
```

where **N** identifies the remote per the table displayed with the **show** command.

NOTE**NOTE**

Since in many applications the antenna is on a tower where it is not practical to have a terminal nearby, the A53350 or A53355 has an additional “antenna alignment aid” available on the outdoor unit. This feature uses the three pin “Auxiliary port” connector to output an audio signal with a pitch proportional to the receive signal strength. A special cable adapter is available that converts the three-pin connector into a standard female audio jack. This cable may be used to connect the three-pin connector to a pair of standard headphones while aligning the antenna. For more information on this cable and adapter contact Siemens Customer Service and refer to part number Z706-00259-0000.

To enable the audible antenna alignment aid – at a terminal session issue the command:

```
> aaa audio or > aaa mode=a-antenna | b-antenna (for LNW mode)
(aaa is an abbreviation for “antenna-alignment-aid”)
```

then align the antenna until the highest audio pitch is heard. Once the antenna is aligned type the command:

```
> aaa off
```

to turn off the audio signal and revert the auxiliary port connector to console mode.

3.4 SPECTRUM ANALYSIS AND CHANNEL SELECTION

Radio operation in unlicensed bands has the potential of suffering from interference from other equipment operating in the same band. The use of directive antennas greatly reduces the potential for interference. In addition, the A53350 and A53355 include several features, described below, to identify and overcome sources of interference.

The A53350 and A53355 can be commanded to perform a spectrum analysis of the ISM band and report the results in either a graphical or tabular form. The command:

```
> spectrum-analysis input=a-antenna dwell=xx
```

instructs the radio to scan the entire band, dwelling on each channel for a programmable amount of time, and record the highest signal level in that channel. This feature can be used to perform a site survey and identify a selection of available “quiet” channels.

Note that even though the A53350 and A53355 channels are spaced 2 MHz apart, the receiver RF bandwidth is approximately 5 MHz. Therefore the RSSI value reported for each channel represents the total energy in a 5 MHz band centered around that channel. For this reason, a narrow band transmitter will show up in the spectrum analysis report as a lobe with 5 MHz bandwidth. Conversely, it is not necessary to find a quiet 5 MHz wide region in the spectrum

analysis report to select a quiet channel, i.e., any single channel sample that shows a low “noise” level, is a good candidate to select as an operating channel.

Once a potential operating channel has been identified using the spectrum analysis tool, a “timing analysis” may also be used to confirm that the selected channel is indeed clear. The command:

```
> time-analysis channel=xx input=a-antenna dwell=xx
```

The command instructs the radio to dwell on the specified channel for the specified amount of time. After taking several samples the radio displays the signal level detected in that channel over time.

3.5 OUTPUT POWER LIMITS (FCC)

The Federal Communications Commission (FCC) regulations limit the maximum Effective Isotropic Radiated Power (EIRP) for spread spectrum systems operating in the 900 MHz and 2.4 GHz bands. Table 3-2 takes these considerations into account and shows the maximum allowed output power for the various antennas:

Table 3-2 Maximum Output Power (dBm)

Frequency (MHz)	Antenna Gain	
	5 dBi	15 dBi
902-928	27 dBm	19 dBm
Frequency (MHz)	Antenna Gain	
	9 dBi	24 dBi
2400-2483	27 dBm	24 dBm

3.6 OUTPUT POWER LIMITS (CE)

At 2.4GHz the European Telecommunications Standards Institute (ETSI) imposes a limit of 20 dBm as the maximum Effective Isotropic Radiated Power (EIRP) for direct sequence spread spectrum system. In addition the maximum spectral power density is limited to 10 dBm per MHz maximum EIRP. Of these two limits the power density is the most restrictive for this radio. The installer must reduce the output power of the radio so that the EIRP of the radio does not exceed 14 dBm. The antenna gain, cable and connector losses must be taken into account when computing the maximum output power. 900 MHz radios cannot be used in the European Communities.

3.7 MAXIMUM PERMISSIBLE EXPOSURE (MPE) LIMITATIONS

The installer must mount all transmit antennas so as to comply with the limits for human exposure to radio frequency (RF) fields per paragraph 1.1307 of the FCC Regulations. The FCC requirements incorporate limits for Maximum Permissible Exposure (MPE) in terms of electric field strength, magnetic field strength, and power density.

Antenna installations must be engineered so that MPE is limited to $f/1500 \text{ mW/cm}^2$ (at 900 MHz) or 1 mW/cm^2 , (2.4 GHz) the more stringent limit for "uncontrolled environments". Table 3-3 specifies the minimum distance that must be maintained between the antenna and any areas where persons may have access, including rooftop walkways, sidewalks, as well as through windows and other RF-transparent areas behind which persons may be located.

Table 3-3 900 MHz – Minimum Distance Calculation to Avoid Antenna Radiation Hazard (exposure of 0.610 mW/cm^2)

Antenna Gain (dBi):	5	15
Max. Output Power	27 dBm	19 dBm
MPE safe distance (inches)	7.9*	7*

* For fixed location transmitters, the minimum safe separation distance is 7 feet ($\approx 2\text{m.}$), even if calculations indicate a lower MPE distance.

Table 3-4 2.4 GHz – Minimum Distance Calculation to Avoid Antenna Radiation Hazard (exposure of 1 mW/cm^2)

Antenna Gain (dBi):	9	24
Max. Output Power	27 dBm	24 dBm
MPE safe distance (inches)	9.8*	9.8*

* For fixed location transmitters, the minimum safe separation distance is 7 feet ($\approx 2\text{m.}$), even if calculations indicate a lower MPE distance.

This Page Intentionally Left Blank

SECTION 4

INSTALLATION AND SETUP

4.0 INSTALLATION AND SETUP

It is recommended that an initial check be performed on the bench before a field installation.

For this bench checkout use two A53350 or A53355 units. Radio 1 will be configured as the hub and radio 2 will be configured as a remote. The first approach described below uses the “Ethernet Console Program” to emulate the terminal across an Ethernet connection. The second approach uses two terminals connected to the auxiliary port of the radios.

4.1 BENCH CHECKOUT (USING RADIO ETHERNET CONNECTIONS)

In order to use the Ethernet connection use the “Ethernet Console Program” (Econsole) provided on the CD. See Appendix D for installation instructions for Econsole. Once Econsole is installed, perform the following steps.

1. Connect the PC Ethernet port to the “To LAN” connector of the Power Inserter Unit of radio 2. Use an Ethernet crossover cable if connecting the PC directly to the Power Inserter Unit, or use a straight cable if connecting through a hub.
2. Connect each Power Inserter Unit to the respective radio using a CAT 5 cable as defined in Section 1.
3. Antenna A of radio 1 needs to have RF connectivity to Antenna A of radio 2. The User may establish this connection using actual antennas. Alternatively the User may connect the two antenna ports using coaxial cables **through an RF attenuator**.



CAUTION

IT IS NECESSARY TO USE AN RF ATTENUATOR OF 30 DB OR HIGHER WHEN CONNECTING TWO ANTENNA PORTS BY CABLE; OTHERWISE DAMAGE MAY OCCUR TO THE UNIT RF RECEIVER.

4. Connect the two Power Inserter Units to a power outlet of the appropriate voltage.

The A53225 or A53350 is typically attached to a pole (with the clamp provided) or rack mounted with the antenna connectors facing up. For optimum performance the radio

5. On the PC open a DOS window and invoke the Econsole program by typing:

> econ

If only one radio is connected to the LAN, ECON will establish a connection with that radio. If more than one radio are in the same LAN, ECON provides a list of all radios found (see Appendix D for more detailed instructions on the use of Econsole). Once a connection to the radio is established, the radio outputs a prompt with the following format:

rmt-nnnnn #>

Where nnnnn are the last five digits of the radio serial number. The first three letters may read **hub** or **rmt**. If the radio had previously been configured the prompt will be the radio **name**.

6. Set radio 2 to its factory default configuration by typing the commands:

> load factory

> save-configuration

7. Move the Ethernet cable from the radio 2 power inserter to the power inserter connected to radio 1. At the DOS window invoke once again the Econsole program. Configure radio 1 by typing the commands:

> load factory

> node type=hub

> save-configuration

8. Once radio 1 is configured as the hub it will establish a RF communication with radio 2. To verify this connection type:

> show

Check that the radio status shows "MASTER IN SYNC", and that the number of remotes is 1. Type **>show radios** to see various statistics of the link with radio 2.

9. Once the link is established, Econsole can be used to configure the local or the remote radio. In order to switch the Econsole connection, logout of the current connection and re-invoke Econsole:

> logout

> econ

Econsole will list the two radios and give a choice to connect to either. The *Commands* section describes the command language used to further modify the radio's operating parameters.

4.2 BENCH CHECKOUT (USING RADIO AUXILIARY PORTS)

1. Connect each A53350 or A53355 Console Port to a terminal, or a PC running a terminal emulation program. Configure the terminal settings as follows:

Baud rate: 9600
 Word length: 8 bits
 Parity: none
 Stop bits: 1

2. Connect each Power Inserter Unit to the respective radio using a CAT 5 cable as defined in section 1.
3. Connect each radio Antenna A port (N type connector) to an appropriate antenna using an RF coaxial cable. This connection may be performed using actual antennas. Alternatively connect the two antenna ports using coaxial cables **through an RF attenuator**.

CAUTION



IT IS NECESSARY TO USE AN RF ATTENUATOR OF 30 DB OR HIGHER WHEN CONNECTING TWO ANTENNA PORTS BY CABLE; OTHERWISE DAMAGE MAY OCCUR TO THE UNIT RF RECEIVER.

4. Connect the two Power Inserter Units to a power outlet of the appropriate voltage.
5. The radios output a banner identifying the software and hardware versions and serial number, followed by the command prompt with the following format:

```
rmt-nnnnn #>
```

Where nnnnn are the last five digits of the radio serial number. The first three letters may read **hub** or **rmt**. If the radio had previously been configured the prompt will be the radio **name**.

6. Set radio 2 to its factory default configuration by typing the command:

```
> load factory
> save-configuration
```

7. Configure radio 1 by typing the commands:

```
> load factory
> node type=hub
> save-configuration
```

8. Once radio 1 is configured as the hub it will establish a RF communication with radio 2. To verify this connection type:

```
> show
```

Check that the radio status shows “MASTER IN SYNC”, and that the number of remotes is 1. Type **>show radios** to see various statistics of the link with radio 2.

9. The terminal connected to each radio can be used to further modify the radio’s operating parameters. The *Commands* Section describes the command language used to perform those functions.

4.3 FIELD INSTALLATION

4.3.1 Configuration

The A53350 and A53355 units are shipped pre-configured with a factory default configuration. If the unit configuration has been altered, the default can always be reloaded with the command:

> load factory

In order to deploy an RF network between two or more radios the User needs to choose one radio to be the “hub” and configure it with the command:

> node type=hub

All other radios may be left configured with the factory configuration. As the radios are turned on with antennas pointing at the hub they will automatically join the network. Use the **>show** command to see the status of the radio, or the **>show radios** command at the hub for a complete list of all the radios in the network.

In most installations the User may want to change several other parameters. The table below shows the most common ones and the associated commands to change them. Refer to the *Commands* section for a complete description of each command.

Table 4-1 Common Configuration Parameters

Parameter	Description	Command
RF channel	It may be necessary to change the RF channels if there is interference on the default channel (20). If necessary configure the RF transmit channel independently from the RF receive channel. Refer to section 3.4 for the procedure for choosing new channels.	rf-receive rf-transmit
RF transmit power	The factory default is 18 dBm. This parameter can be configured in 1 dB increments from 0 to 23 dBm. Take care not to exceed the maximum power limits as described in 3.5 or 3.6..	rf-transmit
Network ID	The default value is 0. Change this value in all radios to a unique number to avoid unauthorized radios from joining the network	node

SECTION 5

UPGRADING FIRMWARE

5.0 UPGRADING FIRMWARE

5.1 DESCRIPTION

The operational firmware for the A53350 and A53355 is stored in Flash PROM and can be easily updated. The Flash PROM can hold multiple versions and types of firmware simultaneously.

Table 5-1 lists some of the “File Utility” commands used to download and manage the various files stored in Flash PROM. A more detailed explanation for each command can be found in the *Commands* section.

Table 5-1 File Utility Command Summary

COMMAND	DESCRIPTION
<code>directory</code>	Lists all files stored in Flash PROM.
<code>delete-file filename</code>	Deletes the specified file from the directory.
<code>download-file path \filename</code>	Downloads the specified file from the PC path\filename into the Flash PROM.
<code>set-default-program filename</code>	Sets the indicated filename as the default program to run after power up.
<code>run-file filename</code>	Loads the indicated program into RAM and executes it.

The firmware files (for point-to-multipoint) are named:

`clh0x_xx.bze` (binary zipped file for downloads through the Ethernet port)

`clh0x_xx.dwe` (ascii file for download through the serial port, or via Telnet)

Where 0x_xx is the firmware version number. Instructions are included for transferring the files to a PC.

A new file can be downloaded into the radios in one of three ways:

1. Using the Econsole program running on a PC connected to the same physical LAN as one of the radios. This is the fastest method and allows the user to download to multiple radios from the same PC.
2. Using a Telnet session from anywhere on the Internet. This requires the radio to have been pre-configured with an IP address.

3. Using a terminal emulator program (e.g. HyperTerminal) running on a PC connected through the serial port to the radio's RS-232 auxiliary port. This method only allows the User to download to that specific radio.

The next three sections explain in detail how to download a new file using each method.

5.2 INSTALLING NEW FIRMWARE THROUGH THE ETHERNET PORT

This procedure assumes that the new firmware needs to be installed in all radios of a working network. The upgrade is performed from a single PC connected via Ethernet to one of the radios. Note that new firmware does not need to be compatible with the firmware currently running on the radios. The user can still download new (incompatible) firmware and restart the network from a single location. After downloading new firmware into a radio, the radio will continue to run the old firmware from its RAM memory until the radio is rebooted to activate the new firmware.

1. Install the utility program "Econ" on the PC. This utility program is distributed on a CD with the radio. Please refer to Appendix D for instructions on how to install this utility.
2. Ensure the file with the new firmware (file `clh0x_xx.bze`) is available on the PC.
3. Start the Econsole utility by typing "econ" from a DOS window command line. Econ will send a "discovery" message and display all the radios that it can see. Verify that all radios in the network are listed. Then select one of the radios in the list to upgrade.
4. Issue the command:

```
> directory
```

to view a list of files stored in Flash PROM as well as the available free space. Verify that the free space in flash PROM is larger than the size of the `pmp0x_xx.bze` file on the PC. If there is not enough space in Flash PROM delete one of the program files to make up space (use the command `delete filename`).

5. If the radio configuration has been password protected, first unlock the protection with the command:

```
> unlock enable-configuration=password
```

(When the configuration is unlocked, the radio prompt displays the characters "#>". In locked mode the prompt does not include the "#" character).

6. Issue the command:

```
> download path\clh0x_xx.bze
```

where `path\` is the directory on the PC where the `clh0x_xx.bze` file is stored. The `path\` extension is not required if the file is in the same directory as the Econ program. As the download proceeds Econ displays a line showing the current percentage complete.

7. Once the download is complete, issue the command:

```
> set-default-program clh0x_xx
```

in order to make the new file the default program to run after a reset.

8. Issue the command:

```
> single-node-reboot-timeout=60
```

in order to speed up the network recovery after rebooting the hub radio in the step below (this step is not necessary if the new firmware is known to be compatible with the old firmware, but it does not hurt in either case).

9. Press the “F4” key to log-off the session with the current radio. Econ displays the list of all radios from the initial discovery phase. Select another radio in the network and repeat steps 4 through 8 above for each of the radios in the list.
10. Once **all** radios in the network have been loaded with the new firmware, log onto the hub radio (using Econsole) and issue the command:

```
> reboot
```

to cause the hub/master radio to restart using the new firmware.

11. If the new firmware is compatible with the old one, the links will be reestablished in a short time (with the hub running the new version and the remotes running the old version). If the new firmware is incompatible with the old one, the links to the remotes will not be reestablished. In this case after 60 seconds, the remote will reboot. The remote will then load the new firmware and be able to reestablish the links with the hub.
12. Wait at least ten seconds from the moment the reboot command was entered into the hub radio, then press <CR>. Econsole automatically attempts to reconnect to the same radio. Once a new session with the hub radio is reopened issue the command:

```
> version
```

and check that the radio is indeed executing the new version.

13. Press the “F4” key to log-off the session with the hub radio. “Econ” displays the list of all radios from the initial discovery phase. Select a different radio from the list and issue the command:

```
> version
```

and check if this radio is running the new or old firmware version. If the radio is running the new version log-off and repeat this step with the next radio. If the radio is not running the new firmware version, perform the next step.

14. If the radio is running the **old** firmware version issue the command:

```
> reboot
```

Wait at least ten seconds for the radio to perform its start up code and re-establish the link. Then press <CR>. Econsole automatically attempts to reconnect to the same radio again. Once a new session with that radio is reopened issue the command:

```
> version
```

and check that this radio is now executing the new version. Repeat steps 12 and 13 until all radios are running the new firmware version.

This completes the process for radios with compatible firmware.

NOTE**NOTE**

The file downloads are executed with the link in full operation. The only downtime in the link occurs when the radios are rebooting. The radio configuration is kept intact when a new version of firmware is started. The downtime for the radio being restarted is typically less than twenty seconds. When upgrading to an incompatible version, the downtime will be slightly over one minute.

5.3 INSTALLING NEW FIRMWARE USING TELNET

Telnet is a protocol that allows performance of a remote radio command session from a local host. The radio must have been pre-configured with an IP address and be reachable, over the network, from the local host. Refer to the *Network Management* section for details on how to configure a radio IP address and initiate a Telnet session. The Telnet terminal emulation must have the capability of sending an ASCII file to the remote machine. The following description assumes HyperTerminal is being used as the local Telnet terminal emulation.

1. Verify that the new software is available on the local machine. The download software for upgrade via Telnet must have a “.dwe” extension, e.g., `c1h03_2.dwe`.
2. Initiate a Telnet session with the radio as described in the *Network Management* section.
3. If the radio configuration has been password protected, first unlock the protection with the command:

```
> unlock enable-configuration=password
```

(When the configuration is unlocked, the radio prompt displays the characters “#>”. In locked mode the prompt does not include the “#” character).

4. Issue the command:

```
> directory
```

to view a list of files stored in Flash PROM as well as the available free space. Verify that there is enough free space in flash PROM for the new file. The space required will be the size of the `c1h0x_xx.dwe` file divided by 2.5. If there is not enough space in Flash PROM delete one of the program files to make up space (use the command `> delete filename`).

5. Start the download process by typing:

```
> download-file destination=clh0x_xx method=inline
```

where 0x_xx file is new version of software being installed.

6. The radio will return with the following:

```
"Send the file ... if incomplete, end with a line with just a
period"
```

When this prompt appears, go to "Transfer-Send Text file..." in HyperTerminal and select the file to be installed. The file must have a ".dwe" extension.

7. After the file is successfully installed, issue the command:

```
> directory
```

to ensure that the file has been loaded into memory.

8. Issue the command:

```
> set-default-program clh0x_xx
```

where 0x_xx file is new version of software being installed.

9. Issue the command:

```
> reboot
```

to restart the radio with the new software. Close the Telnet session, wait a few seconds and open a new session with the same radio.

10. Issue the command:

```
> version
```

to ensure the radio is running the latest version.

5.4 INSTALLING NEW FIRMWARE USING THE RS-232 SERIAL PORT

On occasion, it may be necessary to install new firmware using the RS-232 port. This is generally a less desirable method as the download time is much longer and the user can only update the radio that is directly connected to the PC, i.e., remote updates are not possible. However using the serial port does have the benefit of not disrupting the network or rearranging network wiring to access the radio (e.g. disconnect cable from WAG).

The serial upgrade uses a PC with a terminal emulator. Any emulator can be used however it must have the facility to download a text file on demand. In the example below, the emulator used is Windows HyperTerminal.

1. Connect the A 53350 or A53355 Auxiliary Port (3-pin circular connector) to a terminal, or a PC running a terminal emulation program using the special adapter cable (Siemens P/N: Z706-00235-0000) supplied with the radio. Configure the terminal settings as follows:

Baud rate: 9600
Word length: 8 bits
Parity: none
Stop bits: 1

2. Verify that the new software is available on the PC. The download software for the serial upgrade must have a ".dwe" extension, e.g., `clh03_25.dwe`.
3. To have the shortest download time possible, set the radio to use the highest RS-232 speed allowable on the PC. In this example, a download speed of 115200 baud will be used. Set the console speed of the radio to 115200 baud by issuing the command:

```
> console-speed-bps 115200
```

4. Change the baud rate of the PC to match the radio. Remember that with HyperTerminal, it is necessary to disconnect the session and re-connect before the changes will take effect. Verify the PC communicates with the radio again.
5. If the radio configuration has been password protected, first unlock the protection with the command:

```
> unlock enable-configuration=password
```

(when the configuration is unlocked, the radio prompt ends with the characters "#>". In locked mode the prompt does not include the "#" character).

6. Issue the command:

```
> directory
```

to view a list of files stored in Flash PROM as well as the available free space. Verify that there is enough free space in flash PROM for the new file. The space required will be the size of the `clh0x_xx.dwe` file divided by 2.5. If there is not enough space in Flash PROM, delete one of the program files to make up space (use the command `> delete filename`).

7. Start the download process by typing:

```
> download-file destination= clh0x_xx method=inline
```

Where `0x_xx` file is new version of software being installed.

8. The radio will return with the following:

"Send the file ... if incomplete, end with a line with just a period"

When this prompt appears, go to "Transfer-Send Text file..." in HyperTerminal and select the file to be installed. The file must have a ".dwe" extension.

9. After the file is successfully installed issue the command:

```
> directory
```

to ensure that the file has been loaded into memory.

10. Issue the command:

```
> set-default-program clh0x_xx
```

where 0x_xx file is new version of software being installed.

11. Issue the command:

```
> reboot
```

to restart the radio with the new software. Remember to change the PC HyperTerminal settings back to 9600 baud and disconnect/re-connect the session.

12. Issue the command:

```
> version
```

to ensure the radio is running the latest version.

5.5 FEATURE UPGRADES

The A53350 and A53355 have the ability to turn ON or OFF optional features and capabilities. This is done via the use of the “license” command. This command requires a “key” that is specific to a particular radio serial number and capability. To obtain a feature key, supply the specific model number, the serial number, and the feature desired.

Please contact Siemens Customer Services for a list of optional features available for your radio.

This Page Intentionally Left Blank

SECTION 6 COMMANDS

6.0 COMMANDS

6.1 CONFIGURATIONS TECHNIQUES

There are four ways to configure the radio:

6.1.1 Serial Console

One configuration method uses the auxiliary port at the bottom of the unit and consists of an asynchronous RS-232 link used for issuing configuration commands and monitoring the local radio status and performance (a DB-9 adapter cable is available from Siemens - P/N: Z706-00235-0000). This port defaults to operate with the following parameters at power up:

Baud rate: 9600
Word length: 8 bits
Parity: none
Stop bits: 1

This console port allows configuring and monitoring only the local radio, i.e. the User cannot monitor and configure any of the remote radios reachable through RF.

6.1.2 Econsole/Ethernet

A second configuration method uses the Ethernet connection to the radio to perform the configuration. This approach has the advantage that any radio reachable across the Ethernet, or the RF link, can be configured from a single PC. Additionally the Ethernet connection is more readily available indoors than the console port.

In order to use the Ethernet connection to configure the radios the “Ethernet Console Program” (Econsole) needs to be installed on a PC. This PC must be connected to the LAN where one or more radios are connected. From this PC it is then possible to configure not only the radios directly connected to the LAN, but also any other radios reachable through one or more RF hops. Refer to Appendix D for instructions on the installation of Econsole.

6.1.3 Telnet

The third configuration method is using Telnet from a remote location. Telnet is explained in more detail in the Section 7.1.

6.1.4 UDP/IP Interface

This is intended to allow a host computer to issue all the same text commands available through the other interfaces. Refer to the **udp-configuration** command and paragraph 7.3 for details.

After power-up the radio performs several diagnostic and calibration tests. At the end of these tests it outputs a command prompt. The default command prompts are:

```
rmt-nnnnn #>
```

Where **nnnnn** is the last five digits of the radio serial number. If a node “name” has been assigned to the node, the prompt may be the node name.

The “**help**” command provides a list of all the commands available. For more detailed help on a specific command, type “**help command-name**”.

The radio keeps a history of several of the previously issued commands. Those commands can be viewed by pressing the up-arrow and down-arrow keys on the keyboard. Any of those previously issued commands can then be edited and reentered by pressing the <Enter> key.

6.2 COMMAND SYNTAX

The command interpreter in the A53350 and A53355 is designed to accommodate both a novice as well as an expert operator. All commands and parameters have descriptive names so that they are easily remembered and their meaning is clear. In order to be descriptive however, those commands are sometimes long. As the operator becomes familiar with the command language, typing the complete words could become cumbersome. The A53350 and A53355 command interpreter recognizes any abbreviations to commands and parameter names, as long as they are unambiguous. If an ambiguous command is entered, the radio will output all possible choices.

Commands have the following generic form:

```
command parameter=value parameter=value
```

Multiple commands can be entered in one line by separating them with a semi-colon. If one of the commands has a syntax error the radio executes all commands up to the one with the syntax error and discards the remaining commands.

Following is a brief list of syntax rules:

- Words (for commands, parameters, or values) can be abbreviated to a point where they are unambiguous.
- Some commands or parameters consist of compound words separated by a hyphen. With compound words, the hyphen is optional. Additionally each word in a compound word can be abbreviated separately. For example, the following are all valid abbreviations for the command “save-configuration”: “save”, “savec”, “s-c”, “sc”.
- The parameter and value lists are context sensitive, i.e., in order to solve ambiguities the command interpreter only considers parameters valid for current command, or values valid for the current parameter.

- The arguments “parameter=value” must be entered with no blank spaces on either side of the ‘=’ sign. Those arguments (parameter/value pairs) can be listed in *any* order.
- Even though parameters can be listed in any order, there is a “natural” order known by the command interpreter. This allows the user to specify parameter values without having to type the parameter names. For example the command:

```
> spectrum-analysis input=a-antenna display=table
```

can be entered as (using abbreviation rules as well): > **spa a t**

- Using the preceding rule, for commands that have a single argument, the “parameter name” part of the argument is always optional, i.e., enter:

```
> command value
```

For example the command:

```
> save-configuration destination=main
```

can be shortened to any of the following:

```
> save-configuration main
```

```
> save main
```

```
> save
```

- Not all parameters associated with a command need to be specified. Depending on the command, when a parameter is omitted it either assumes a default value or keeps the last value assigned to that parameter.
- For all parameters that accept a numeric value the number can be entered in decimal, hexadecimal, or octal notation. To enter a number in hexadecimal notation precede it with a 0x or 0X. To enter a number in octal notation precede it with a 0 (zero). All other numeric values are interpreted as decimal. Example:

```
> rf-1 receive=0x1a      (hexadecimal)
```

```
> rf-1 receive=14      (decimal)
```

The following sections describe the various commands grouped according to their functionality. A summary list of all commands is contained in Appendix A.

6.3 CONFIGURATION MANAGEMENT COMMANDS

A **radio configuration** consists of a set of programmable parameters that define the radio operation with regard to a variety of operating modes. There are five different configurations identified as **current**, **main**, **alternate**, **factory**, and **basic**.

The **main** and **alternate** configurations are both stored in non-volatile memory. They can be loaded into the **current** configuration with the **load** command. On power up the radio loads the **main** configuration from non-volatile memory into the current configuration.

The **current** configuration is the set of parameters currently being used and can be modified by the operator through several commands. This configuration is volatile. If the current configuration has been modified it should be saved using the **save** command. Otherwise the modifications will be lost if power is removed.

The **factory** configuration cannot be modified by the operator and is used to return the radio to the factory default condition. It is useful as a starting point to create a customized configuration.

The **basic** configuration is similar to the factory configuration with the exception that a few parameters are left unchanged when the **load basic** command is issued. The parameters left unchanged are the RF and the IP configuration. This is useful when logged on to a remote unit and need to start from a known configuration. If the **load factory** command were issued contact may be lost with the remote unit if, for example, it changes the antenna of the remote radio.

The access to change the radio configuration can be password protected. This password is set by the user with the **change-password** command. Once a password is set, issue the **lock** command to prevent any unauthorized changes to the configuration. Once locked, the configuration can only be modified by issuing the **unlock** command with the correct password.

When the configuration is unlocked, the radio prompt ends with the characters “#>” to remind the user that the configuration is unlocked. In locked mode the prompt does not include the “#” character. Once a password is set, the radio will automatically lock the configuration after 10 minutes without any commands being issued.

The configuration management commands are listed in the following paragraphs:

6.3.1 Change-Password

`enable-configuration="ASCII string"`

This command allows the user to set or change a password used to “lock” and “unlock” access to the commands that change the radio configuration. The A53350 and A53355 are shipped with no password which allows access to all commands. Once a password is set and the configuration is locked, the password is needed to unlock the access to those commands. After changing the password also issue the “**save-configuration**” command to save the new password in non-volatile memory.

Example:

```
> change-password enable-configuration=bh7g8
```



CAUTION

THE A53350 AND A53355 ARE SHIPPED WITHOUT A PASSWORD. IF THE “CHANGE-PASSWORD” COMMAND IS ISSUED, BE SURE TO NOT FORGET THE PASSWORD. ONCE LOCKED, WITHOUT THE PASSWORD, THE RADIO MUST BE RETURNED TO THE FACTORY TO BE UNLOCKED.

6.3.2 Display-Configuration

source=current or **main** or **alternate** or **basic** or **factory**

This command displays all the parameter values for the specified configuration. If the source is not specified it defaults to “current”.

Examples:

```
> display-configuration factory
> discon
```

6.3.3 Load-Configuration

source=main or **alternate** or **basic** or **factory**

This command loads the specified configuration into the current set of parameters controlling the radio operation. If no source is specified it defaults to the “main” configuration.

Examples:

```
> load-configuration source=factory
> load
```

6.3.4 Lock

This command locks the access to all the commands that can alter the radio configuration. Once locked it is necessary to use the “unlock” command to regain access to those commands. Note that a password must be set prior to the “lock” command being issued (the radios are shipped with no password), otherwise the lock command has no effect. If a password is set, the radio automatically “locks” the configuration at the end of 10 minutes with no command activity.

6.3.5 Save-Configuration

destination=main or **alternate**

This command saves the current set of radio operating parameters into one of the two non-volatile configurations. If the destination is not specified it defaults to “main”.

Examples:

```
> save-configuration destination=alternate
> save
```

6.3.6 Unlock

```
debug-mode="ASCII string"  
enable-configuration="ASCII string"
```

This command unlocks the access to various commands. The **enable-configuration** password (set with the change-password command) unlocks the various commands listed in this manual that alter the radio configuration. The **debug-mode** is a factory mode used for troubleshooting by customer support.

Example:

```
> unlock enable-configuration=bh7g8
```

6.4 MAJOR CONFIGURATION PARAMETERS

These commands change several operating parameters of the radio that are part of the radio configuration. When entering commands with multiple parameters, if a parameter is not included, that parameter keeps its current value.

6.4.1 Distance-Max

```
maximum=10..255 (km), 10..158 (miles)  
units=km or miles
```

This command sets the limit for the maximum distance of any RF link in this network. The user only needs to set this maximum distance at the hub node. All other nodes will automatically configure the maximum distance to that of the parent node.

In general leave the maximum distance set to the default value of 80 km (50 miles). But if deploying a network where one or more links exceed this distance it is necessary to change this parameter to a value that is equal to or greater than the maximum link distance.

Increasing the maximum distance will result in a slight decrease of the network capacity.

Examples:

```
> distance 100 km  
> distance units=miles
```

6.4.2 Encryption

NOTE

NOTE

Radios used outside of the U.S. are subject to restrictions on the use of encrypted transmissions using Triple DES and AES-128. Contact Siemens Customer Service for further details.

mode=off or ***des-56*** or ***3-des-112*** or ***aes-128***

Selects the encryption algorithm applied to all user data packets transmitted over-the-air. All units support the ***des-56*** mode. The ***3-des-112*** and ***aes-128*** modes may be blocked, use the “>help encryption” command to find which modes are available in the unit.

When using encryption it is necessary to set all units in the network to the same mode and enter the same key. The number at the end of each mode name is the length, in bits, of the key used in that encryption mode.

key=XXXX-XXXX-XXXX-XXXX-...

key-phrase=<string>

Enter the key using hexadecimal digits in groups of 4 separated by optional dashes. The table below shows the number of hexadecimal digits required for each mode.

Table 6-1 Encryption Key Lengths

	DES-56	3-DES-112	AES-128
Key length (bits)	56	112	128
Hexadecimal digits	16	32	32

In the DES modes the least significant bit of each key byte is a parity bit. Therefore each byte contributes only 7 bits to the key length. It is not necessary to enter the key with the correct (odd) parity, the software will enforce that and echo back the key with the correct parity.

The **key-phrase** parameter provides an alternate way for entering a key. Enter any ascii string of up to 80 characters and the radio will generate a pseudo-random key of the appropriate length. The key phrase may have spaces but it is necessary to put it in quotes. Note that the key-phrase is not stored in the radio configuration, only the generated key.

Example:

> encryption aes128 key-phrase="Acronym For SAFE Radios"

6.4.3 Ethernet

speed=auto-10 or 10hdx or 10fdx or 100hdx or 100fdx or auto

Sets the Ethernet port speed to a combination of 10 or 100 Mbps, half or full duplex, or auto negotiate.

In installations requiring a very long outdoor CAT5 cable, operation at 100 Mbps may become unreliable. For this reason the **auto-10** setting forces the speed to 10 Mbps but negotiates the half or full duplex. The **auto** setting negotiates both the speed and duplex to the fastest configuration supported by the other devices on the Ethernet.

The user can also turn **off** the Ethernet port, but only if the command session is over the console port, or remotely over an RF link. This can be useful for test purposes if it suspected that a loop was created in the network and it is desired to shut down this port without turning off the radio.

timeout-sec=5..10000

Sets the time the radio will retain, in its internal table, Ethernet addresses obtained from the network.

multi-cast-timeout-sec=5..10000

Sets the time the radio will retain, in its internal table, Ethernet multi-cast addresses obtained from the network. This cannot be set to a value below the station-timeout.

Example:

```
> ethernet speed=10fdx timeout=100
```

6.4.4 Node

type=hub or remote

In the cluster-hub network, configure all hubs with node type set to **hub** and all other radios set to **remote**. When you have multiple hub radios the cluster will automatically select one as the master-hub. Use the **>show radios** command at any of the hubs to find which one is the current master (index zero in the cluster hub table).

max-remotes=1...29

At the master hub radio this value specifies the maximum number of remotes that will be allowed to join in. Once the network has this many remotes it stops allocating a slot for new nodes to join in. This increases the inbound throughput slightly, specially if the number of remotes is small.

redundancy=1...4

Selects the total number of separate transmissions by different cluster-hubs for each outbound packet. As you increase the number of redundant transmissions, the robustness of the wireless network improves at the expense of total throughput capacity. If there are fewer hubs than the selected number of transmissions, all hubs will transmit the same packet in turn.

name="ASCII string"

Gives the node a meaningful name for further reference. This name will be used as the command prompt. It is also used to identify the node in a variety of commands and displays. The name field can be up to 23 characters with no spaces. If spaces are desired, include the whole name in quotation marks.

network-id=0..65,535

For a link to get established, the network-id value of the radios involved must match. Setting unique network ids on each network prevents a radio from connecting to the wrong hub or peer if it happens to be within RF range, and on the same channel.

The value of the network-id is only displayed if the configuration is unlocked.

location="ASCII string"

Optional parameter to define the location of the node. This field is displayed in the "Display-configuration" output and also reported through SNMP. This field is used for information only. The location string can be up to 25 characters with no spaces. If spaces are desired, include the whole string in quotation marks.

contact="ASCII string"

Optional parameter to define the contact for maintenance purposes. This field is displayed in the "Display-configuration" output and also reported through SNMP. This field is used for information only. The contact string can be up to 25 characters with no spaces. If spaces are desired, include the whole string in quotation marks.

Example:

```
> node name=bank location="wall street" contact=964-5848
```

6.4.5 rf-receive Setup

channel=<channel-number>

antenna=a, b

This command configures the channel, and antenna used for the RF reception.

For a remote radio to join the network, the channel selected by this command must match the transmit channel selected for the hub radio.

Table 4.2 shows the valid ranges for the **channel** parameter which depend on the radio model you are using. Refer to Appendix C for a mapping of the channel numbers to actual RF frequencies. You can also use the command **>help rf-receive** to find the ranges of the various parameters.

Example:

```
>rfre ch=15
```

6.4.6 rf-transmit Setup

```
channel==<channel-number>
antenna=a, b
speed-kbps= <rf-speed>
power-dbm=0..27
```

This command configures the channel, antenna, speed, and transmit power used in the RF transmissions.

You only need to configure the transmit channel of the hub radios. The remote radios will automatically set their transmit channels to match the receive channel of the hubs.

The following table shows the valid ranges for the **channel** and **rf-speed** parameters which depend on the radio model you are using. Refer to appendix C for a mapping of the channel numbers to actual RF frequencies. You can also use the command **>help rf-transmit** to find the ranges of the various parameters.

The rf-speed for the complete network is driven by the setting at the master hub. All other radios will modify their configuration to match that value. Lower speeds may restrict the maximum number of hubs in a network. You can use the “show” command to find out the current maximum number of hubs allowed.

The clustered hub topology can generate a lot of over-the-air traffic, specially as you increase the value of transmit redundancy. To avoid congestion we recommend you always use the highest rf-speed available.

Table 6-2 Channel and RF Speed Ranges

	A53350	A53355
Channel ranges	3...27	2...39
Rf-speeds (mbps)	0.10 0.20 0.55 1.10	0.25 0.50 1.375 2.750

6.4.7 Single-Node-Reboot

```
> timeout-sec=0,15..20000
```

After power up, radios attempt to get an RF link up with one or more radios. If a radio fails to get a link up (or drops all existing links), it will perform a complete reset after the timeout specified in this command. A value of zero is allowed and turns this feature off.

This feature is useful if issuing a command to a distant radio (over an existing RF link) and the link drops as a consequence of the command. If that radio now has no other links up it waits for the "single-node-reboot" and then performs a reset. As a result, the radio reverts to the saved configuration, allowing it to reestablish the original link.

Example:

```
> snr 60
```

- **Time-Division-Duplex**

```
cycle-period-ms=20 or 40 or 60 or 80
```

The network operates in fixed “cycles” as described in section 2. A cycle is then divided into an outbound phase (transmissions by the hubs) followed by an inbound phase (transmissions by the remotes). Lower cycle periods result in lower latencies in a network with low traffic. As the network and/or traffic increases, you may get better performance with larger cycle periods. Short cycle periods may restrict the maximum number of hubs allowed. After changing this parameter you may check what the maximum number of hubs are allowed with the “show” command.

The cycle period is set by the master hub radio. All other radios in the network will change their configuration to match that of the master hub.

```
transmit-percent= auto or 20 or 30 or 40 or 50 or 60 or 70 or 80
```

This parameter defines the percentage of the cycle that is dedicated for transmission by the hubs. The remaining time is dedicated to receiving from the remotes. This parameter is set by the master hub radio. All other radios in the network will change their configuration to match that of the master hub.

In **auto** mode the master hub radio dynamically assigns a split based on the current traffic load in each direction. This split may be different from cycle to cycle. This is the recommended setting.

Example:

```
> tdd sync=auto transmit=30
```

6.5 INTERNET PROTOCOL (IP) MANAGEMENT COMMANDS

The IP Management commands configure the radio IP protocol parameters which allow the radio to be monitored and configured through Telnet and SNMP. Refer to Section 7.0 for a more detailed explanation on those two applications.

6.5.1 IP-Configuration

```
address=<ip address>
```

```
netmask=<string>
```

```
gateway=<ip address>
```

```
dhcp-client=yes or no
```

This command configures the radio IP address, netmask and gateway. The IP configuration is optional and the radios are shipped with these parameters left blank. Once the IP configuration has been initialized, the radios will reply to “ping” packets. The IP configuration is also required in order to use the “ping”, “snmp” and “Telnet” features.

Alternatively the **dhcp-client** function can be enabled. In that case the radio will attempt to configure its IP address parameters from a DHCP server in the network.

Since the two radios in a link are bridged together they are in the same "internet network".

Example:

```
> ipconfig add=207.154.90.81 netmask=255.255.255.0 gateway=207.154.90.2
```

6.5.2 Ping

```
destination=<string>
```

```
count=0..500
```

```
size-bytes=32..1400
```

This command causes the radio to "ping" the destination address and display the results. The "ping" packet consists of an ICMP packet with a length specified by the "size-bytes" parameter. The destination is any valid IP address. When the destination host receives the packet it generates a reply of the same size. Upon receiving the reply the radio displays the round trip delay. This process is repeated until the number of replies reaches the value specified by the "count" parameter (default to 4). A count of zero leaves ping running indefinitely until stopped by the user.

Example:

```
> ping 207.154.90.81 count=10 size=100
```

6.5.3 SNMP

The radio runs an SNMP agent which allows up to four IP addresses to be specified as valid SNMP managers. This command configures those IP addresses and the type of access allowed. The command may be issued up to four times to specify each separate IP address manager. The radios are shipped with all entries blank. While no entries are specified, the unit accepts SNMP "get" requests from any IP address within the "public" community. Once one or more entries are specified, the radio only responds to requests from the specific IP addresses listed. This list of authorized managers is also used for validating Telnet requests.

Refer to the Section 7.0 for an overview of Network Management using SNMP and Telnet.

```
manager=<ip address>
```

Specifies one valid IP address where the SNMP manager or Telnet session will run.

```
community=<string>
```

Any string of up to 9 characters. For SNMP requests the "community" field in the request packet from this IP address must match this parameter. For a Telnet session the username entered when initiating the session from this IP address must match this string. If this parameter is not specified it defaults to "public". Note that you must always enter the "manager" IP address in the same command line that sets the "community" value.

`access=g` or `gs` or `gst` or `gt`

SNMP access type authorized for this IP manager. Specify as any combination of three letters: g (get), s (set) and t (trap). If this parameter is not specified it defaults to “get”. Note it is necessary to enter the “manager” IP address in the same command line that sets the “access” value.

`authentication-traps=0` or `1`

Specifies whether an “authentication trap” should be generated if a SNMP request is received that cannot be honored (due to invalid IP address, community or access fields). When enabled, all IP managers that have “trap” access will receive this trap.

`delete=1..4`

Allows deleting one entry in the SNMP table. The number 1..4 refers to the entry number as listed in the “display configuration” report.

Example:

```
> snmp manager=207.154.90.81 com=support access=gst
```

6.5.4 UDP-Configuration

`console=on` or `off`

`vital-port-1=1..0xFFFF`

`vital-port-2=1..0xFFFF`

`command-port=1..0xFFFF`

`max-response-bytes=500..1466`

`socket-mode=1` or `2`

`peer-address=<ip address>`

`peer-command-port=1..0xFFFF`

The **console** parameter turns **on** or **off** the radio UDP interface. The factory default is off. The parameter may be turned on for either of the following purposes:

1. To send and receive “**vital packets**” which the radio classifies as the highest priority.
2. Send radio configuration text commands encapsulated in UDP/IP packets. This is useful when it is desired to configure the radio from a program running on an external computer

The **vital-port-1** and **vital-port-2** specify two different UDP port numbers. The radio examines the “source” and “destination” ports of any UDP encapsulated packets that the radio receives and queues for transmission over RF. If any of those two values match the vital-port-1 or vital-port-2, the packet is classified as “**vital priority**” and is transmitted ahead of all other packets.

All the remaining parameters are used for the purposes of issuing radio commands using UDP encapsulated packets. The formats of these UDP packets and radio replies are described in detail in section 7.3.

The **command-port** parameter is the UDP port number used by the radio to receive commands.

The **max-response-bytes** parameter allows extending the length of the UDP packets generated by the radio beyond the default 500.

The **socket-mode=1** (default) is intended for applications where the controlling program allocates a single socket for packets in both directions, while **socket-mode=2** is used when the program must create separate sockets for sending to the radio and receiving from the radio.

In both modes the radio listens for UDP packets addressed to the specified **command-port** number. In **socket-mode 1**, if the user does not specify a **peer-address** and a **peer-command-port** the radio accepts packets from any IP address and port and sends the responses to the same IP address and port from which the command was received. If specifying a **peer-address** and/or a **peer-command-port** the incoming packets must match these parameters, otherwise the packets will be ignored.

In **socket-mode 2**, the radio sends the UDP command replies to the IP address specified by the **peer-address** parameter and sets the destination UDP port to the value specified by the **peer-command-port** parameter. Additionally the IP address on incoming packets must match the **peer-address** parameter.

6.6 INSTALLATION AND LINK MONITORING COMMANDS

These commands are useful as installation aids and also for monitoring link statistics after the link is established.

6.6.1 Antenna-Alignment-Aid

mode=off or **a-antenna** or **b-antenna**

With the mode other than **off**, the radio outputs, through the auxiliary port, an audio signal with a pitch proportional to the Receive Signal Strength (RSS) level of packets received on the specified antenna. A special cable adapter is provided (Siemens P/N: Z706-00254-0000) that converts the three-pin auxiliary port connector into a standard female audio jack. Use this cable to connect the auxiliary port to a pair of standard headphones while aligning the antenna.

While the antenna alignment is **on**, the RS-232 console output is not available. When the antenna alignment output is set to **off** the auxiliary port output reverts to RS-232 console.

The antenna alignment output setting can also be saved as part of the radio configuration. This is useful to take a pre-configured radio to an installation site with no need to turn the antenna alignment ON (through a terminal) after power up.

Examples:

```
> aaa a-antenna
> aaa off
```

6.6.2 Monitor-Coverage

`clear=0 or 1`

This command is only valid at the master hub. It continuously updates a list of all remotes and, for each remote, it displays which hubs are currently within range and the respective receive signal strength (RSSI) as seen by those hubs. The hub numbers correspond to the radios as listed in the **show radios** command.

The covering hubs for each remote are typically listed in order of RSSI. The only exception is if you set the transmit redundancy to one, the scheduling algorithm applies some hysteresis before switching covering hubs - in which case the first hub listed may not be the one with the strongest RSSI. In all cases the first N hubs listed (with N being the transmit redundancy) will actively transmit packets to that remote.

The last two columns in the table show how many polls were issued to that remote since the screen was last updated, and the maximum interval between consecutive polls to that remote since that value was cleared. You can clear this last number by using the **clear=1** argument

6.6.3 Monitor-Flow

At the hub this command shows the current data flow to and from each remote and updates this information once per second. At a remote unit this command shows the data flow statistics to the hub. Press the [space bar] to terminate the command.

6.6.4 Monitor-Link – Display Link

`node=3...31`

`clear=0 or 1`

`header=0 or 1`

`line-feed=0 or 1`

These commands output statistical information about one RF link. If you are at a hub and there are multiple remotes you need to specify the remote **node** using the index assigned to that remote (use the “>**show radios**” command to see the indexes). Note that only the master hub has complete information about all the links; therefore when you issue this command at a non-master hub some of the information will be missing. If you are at a remote the node number is irrelevant, the command displays the complete statistics of the link from the hubs.

The **display-link** command outputs the information once and returns, while **monitor-link** keeps running, updating the single line of statistics once per second, until you press the space-bar.

The output at the master hub has the format shown below. At a remote the output has an identical format with the headers slightly different to reflect the perspective at the remote. The description of the fields below reflects the hub’s perspective.

You can use the **header=0** parameter to eliminate all the lines and headers except for the last line. All values are output in ASCII, separated from each other by one or more spaces. The line terminates with the Carriage Return character. You can also specify the **line-feed=1** to add a line feed character to the end of the line.

>display-link node=3

CLUSTER HUBS (redundancy 3):

#	S/N	Since	RSSI	Last Seen
0	17001	00:20:39	-64	0.08
1	15005	00:20:40	-64	0.08
2	16335	00:20:46	-43	0.00

REMOTES:

Total #	N hubs (ever)	(now)	Hubs	RSSI	% received by					Recent			
#	Name	S/N	Since	Replies	3+	2	1	0	0	Rd	Hi	Max	Min
3	rmt-17010	17010	00:20:40	45588	99.	.01	.00	.00	0	3	2	-43	-65

Where:

Cluster Hubs: Table listing all the cluster hubs and for each of them the last RSSI level, and elapsed time since that RSSI was recorded. At a master hub these are the RSSIs at the hubs for the reception from the specified remote. At a remote this is the RSSIs at the remote on the last message from that hub. If more than 10 seconds elapsed since this hub was involved, then the RSSI is left blank.

Total Replies: Total number of MAC level packets transmitted by this remote since joining the network or since statistics were cleared with clear=1 parameter. The following percentages are with reference to this number of packets.

% received by N hubs (ever): Of the total replies, these fields indicate the percentage of packets that were received by more than 3 hubs, by 2, 1 or 0 hubs. The last value indicates the percentage of packets that were actually dropped.

% received by N hubs (now): Of the last 100 replies this numbers indicates how many packets were dropped (received by 0 hubs).

Hubs Rd: number of redundant hubs – how many different hubs received from this remote in the last second.

Hubs Hi: Current hub index with the highest RSSI.

RSSI: Min and Max RSSI of last message received from specified remote by the hubs “covering” that remote. The number of hubs covering the remote is controlled by the “node redundancy” parameter. If there is no Max or Min RSSI (no hubs received) the value will show as -99.

6.6.5 Show-Table

table=status or ethernet or econsole or links or tree or radios or ip-stack
 format=counts or times

This command displays various tables in different formats as described below:

6.6.5.1 Status Table

This contains miscellaneous information including system start and run times, unit temperature, input DC voltage, and RF link status. The “format” parameter is not applicable for this table.

6.6.5.2 Radios Table

Displays a complete list of the cluster hubs followed by the remotes with different statistics for each group. When you issue this command at a hub, an asterisk identifies the hub radio that you are logged to. Also the first radio on the cluster list (with index 0) is always the master hub for that cluster.

Below is the format of the “show radios” output at a master hub. See the **display-link** command for a description of all the statistics. Note that at a non-master hub not all the fields are filled.

```

CLUSTER HUBS:
#   Name      S/N      Since
--  -
* 0           17001    00:20:39
  1           15005    00:20:40
  2           16335    00:20:46

REMOTES:
#   Name      S/N      Since      Total    % received by      Recent
#   Name      S/N      Since      Replies  3+ 2 1 0 0 Rd Hi-Max RSSI Min
--  -
  3 rmt-17010 17010    00:20:40   45475 99. .01 .00 .00 0 3 2 -43 -64
  4 rmt-16300 16300    00:20:40   46229 99. .29 .00 .00 0 3 2 -60 -73
    
```

6.6.5.3 Ethernet-Stations Table

This table can be displayed in two formats, “counts” (default) and “times”.

> **show ethernet (counts)**

#	MAC address	IP address	Radio	--Discard--		--Forward--	
				from	to	from	to
0	ff-ff-ff-ff-ff-ff		Local	0	0	0	919
1	00-0d-94-00-3a-9d		me	0	0	388	361
2-	01-0d-94-00-00-01		me	0	0	0	0
3	00-a0-cc-66-70-8e	207.154.90.161	4	0	0	197246	99568
4	00-a0-cc-d7-06-76	207.154.90.173	Hub	0	0	99578	197133
5	00-a0-cc-d6-fd-50		6	0	0	122	148
6	00-a0-cc-d7-0b-0d	207.154.90.204	5	0	0	180	0
7	00-a0-cc-d7-0b-14		Hub	0	0	118	0
8	00-0d-94-00-42-69		4	0	0	1	0

>show ethernet times

#	MAC address	IP address	Radio MC	Time added	Idle	VLAN
0	ff-ff-ff-ff-ff-ff		Local	11-Jan 22:57:57		N/A
1	00-0d-94-00-3a-9d		me X	11-Jan 22:57:57		N/A
2-	01-0d-94-00-00-01		me	11-Jan 22:57:57	5490.86	N/A
3	00-a0-cc-66-70-8e	207.154.90.161	4	11-Jan 23:30:48		N/A
4	00-a0-cc-d7-06-76	207.154.90.173	Hub	11-Jan 23:32:32		N/A
5	00-a0-cc-d6-fd-50		6	12-Jan 00:28:22		N/A
6	00-a0-cc-d7-0b-0d	207.154.90.204	5	11-Jan 23:30:56	20.23	N/A
7	00-a0-cc-d7-0b-14		Hub	11-Jan 23:31:14	14.96	N/A
8	00-0d-94-00-42-69		4	12-Jan 00:29:06	21.64	N/A

Both formats list all the Ethernet stations attached to either this radio or other radios that have a direct link to this one. The tables list the MAC (Ethernet) address of the station, and, if known, the IP address.

The first row in the table tracks broadcast traffic while the second entry is always the address of the radio itself. The Radio column shows the radio where that station is physically attached. It may have a number 3 through N which identifies one of the children radios as shown in the **show links** table. Or it may say: “**Local**” to indicate stations connected to the local Ethernet, “**me**” to identify this radio, “**Hub**” for the parent radio, and “**Bcast**” for addresses that are in an unknown segment (this radio broadcasts packets to these addresses through all ports).

The “counts” format shows the cumulative number of Ethernet packets that have been seen with that MAC addresses in the source (“from”) or the destination (“to”) fields. The radios operate the Ethernet port in promiscuous mode and therefore look at all the packets in the Local Area Network. The radios discard the packets that are known to be local, but forward all other packets to remote radios. These are accounted separately in the report.

The “times” format indicates whether that entry is for a “multicast” (MC) address, shows the time when the station was added to the table, and how long since that address has been seen. When the “idle” time exceeds the time specified by the “ethernet” command, that entry is deleted from the table.

6.6.5.4 Econsole Table

The unit broadcasts an e-console discovery packet on both its ports: Ethernet and RF, and then reports all the replies. These include both gateways and radios that can be reached on either port.

6.6.5.5 Properties

Displays the properties of the radio hardware including the hardware version, clocks speeds, CPU version, and RF characteristics.

6.6.6 Spectrum-Analysis

```
input=a-antenna or b-antenna
display=graph or table
dwell-time-ms=1..1000
```

This command switches the receiver to the specified antenna (defaults to A) and then performs a scan of **all** the channels across the band, dwelling on each channel for the specified amount of time (defaults to 20 milliseconds). While on each channel it measures the RSSI for that channel and stores its peak value. It then displays the data collected in a graphical or table formats (defaults to “graph”).

Note that even though the A53350 and A53355 channels are spaced 2 MHz apart, the receiver RF bandwidth is approximately 5 MHz. Therefore the RSSI value reported for each channel represents the total energy in a 5 MHz band centered around that channel. For this reason, a narrow band transmitter will show up in the spectrum analysis report as a lobe with 5 MHz bandwidth. Conversely, it is not necessary to find a quiet 5 MHz wide region in the spectrum analysis report to select a quiet channel, i.e., any single channel sample that shows a low “noise” level, is a good candidate to select as a receive channel.

Examples:

```
> spectrum-analysis input=b-antenna
> spa
```

6.6.7 Time-Analysis

```
channel=0..50
input=a-antenna or b-antenna
display=graph or table
dwell-time-ms=1, 2, 5, 10, 20, 50, 100, 200, 500
```

This command switches the receiver to the specified antenna (defaults to A) and then measures the RSSI for a **single** channel over a period of time. Each “sample” consists of the maximum RSSI measured during the dwell time specified (defaults to 20 milliseconds). After collecting 60 samples the RSSI values are displayed graphically or numerically (defaults to “graph”).

Examples:

```
> time-analysis input=b-antenna
> tia in=a dis=t dwell=500
```

6.7 FILE UTILITIES

The A53350 and A53355 maintain a file system that allows multiple programs to be stored in either non-volatile flash PROM or volatile RAM. New programs can be downloaded into the A53350 and A53355 memory through the auxiliary port, through the Ethernet port, or to a remote radio across the RF link.

One of the programs in flash PROM is designated as the default program to run after reboot. On power up that program is copied from PROM into RAM and the code runs out of RAM.

Both sections of memory (non-volatile flash PROM and volatile RAM) are segregated into two “directories”. The non-volatile flash PROM is called “flash” signifying the flash PROM and the volatile RAM is called “tmp” signifying the temporary status of the program. Use the “directory” command to view the programs loaded and whether they are in non-volatile or volatile memory.

Any program can be invoked with the command “run” without making it the default file. This is useful when upgrading the software over an RF link as a way to ensure that the new code is working correctly before making it the default.

6.7.1 Console-Speed-Bps

```
baud-rate-bps=9600 or 19200 or 38400 or 57600 or 115200
```

Sets the Auxiliary port of the radio to the specified baud rate. This setting is not saved in the radio configuration the auxiliary port always reverts to 9600 baud on power up.

This command is useful to speed up the download process over the auxiliary port. Before issuing the download command, use this command to change the radio console speed to the highest baud rate supported by the PC. Then change the terminal settings to match the radio speed. Issue the download command described below and initiate the transfer at the terminal.

Example:

```
> console-speed-bps baud-rate-bps=115200
```

6.7.2 Copy-File

```
source=filename
destination=filename
```

Copies the input-file into the output-file. If the memory location is not defined (flash or tmp), the command assumes the flash directory.

Example:

```
> copy-file tmp\clh01_22 clh01_22
```

6.7.3 Delete-File

filename=filename

Deletes the specified file from RAM or Flash PROM. If the memory location is not defined (flash or tmp), the command assumes the flash directory.

Example:

```
> delete clh01_22
```

6.7.4 Directory

format=short or full

Lists all the files currently stored in flash PROM and RAM, their size, the sectors occupied and the MD5 checksum (full version). It also indicates which of the files is the default program. Files stored in flash PROM have the `flash\` prefix. Files stored in RAM have the `tmp\` prefix.

Example:

```
> dir
```

6.7.5 Download-File

source=path\filename

destination=filename

method=inline or binary

Downloads a program file from a PC to the Radio.

To download a file through the Ethernet port or across RF links it will require running the Econsole program on a PC attached to a radio through the Ethernet port. In this case the program file must be in binary zipped format (with extension **.bze**). The *path* in the source parameter is the PC directory where the file resides. The program file is transferred to the radio and is stored in memory under the name specified by the destination parameter. If the destination parameter is omitted, the file will be stored in Flash PROM with the same name as the source. Note that the “.bze” extension is required in the command. The download “method” must be “binary” (which is the default).

Example:

```
> download C:\load\clh03_12.bze
```

Downloads the file `clh03_12.bze` from the PC directory `C:\load`, into the unit file `flash\clh03_12`.

If the download is executed from a terminal connected to the Auxiliary port, the file is in ASCII format and has the extension `.dwe`. The download method must be “inline”. The source parameter is not needed since, after issuing the command, it is necessary to initiate the transfer of the file from the terminal.

Example:

```
> download destination=clh03_12 method=inline
```

After issuing the command initiate the file transfer using the terminal facilities.

6.7.6 Run-File

`filename=filename`

This command executes the specified file. The file is first copied into RAM and then the program is executed out of RAM. If the radio is rebooted or power cycled, the radio reverts back to the program defined as the default program. If the memory location is not defined (*flash* or *tmp*), the command assumes the flash directory.

Example:

```
> run clh03_04
```

6.7.7 Set-Default-Program

`filename=filename`

Sets the specified file as the default program to be loaded upon reboot or power cycle. Since the default program must reside in flash memory, the “flash\” prefix is assumed and is not required for the command.

Example:

```
> sdp clh03_04
```

6.8 EVENT LOGGING COMMANDS

The A53350 and A53355 keep track of various significant events in an “event log”. This event log holds up to 500 events. The first 100 entries in the log are filled sequentially after power up and are not overwritten. The remaining 400 entries consist of the last 400 events recorded. All events are time-tagged with system time.

Events are classified in different categories from level 0 (catastrophic error) to 7 (information).

6.8.1 Clear-Log

`region= all-events or reboot-reasons`

This command clears the contents of the system event log from the specified “region”. After a code upgrade it is recommended to clear the reboot reasons since the pointer in non-volatile memory pointing to the reason message may no longer be valid.

6.8.2 Display-Log

```
region=end or tail or beginning or all-events or reboot-reasons
length=1..500
id=0..200
min-level=0..7
max-level=0..7
```

This command outputs to the terminal the specified **region** of the event log. The **length** parameter specifies the number of events to output (defaults to 10). The remaining parameters provide filters to leave out specific events. If the **id** parameter is specified, only the event identified by that id will be displayed. The **min-level** and **max-level** settings allow the user to display only the events with the specified category range.

When the region is specified as **tail**, the command displays the last 10 events followed by a blank line, then waits for more events and displays them as they occur. Press the space bar to exit this mode.

The **reboot-reasons** region of the event log consists of the last four events that caused the radio to reboot. These events are stored in non-volatile memory. The time tag in these events is the time the gateway was up since it was rebooted, not the time of day.

Examples:

```
> display-log region=all
> display-log region=all length=300 min-level=2 max-level=6
```

6.8.3 Max-Event

This command sets the event severity level that should be saved or displayed. These two parameters are saved as part of the configuration

```
save=0..7
```

Only events of the specified level or below will be saved in the event log.

```
print=0..7
```

Events of the specified level or below will be output to the console port as they occur.

Example:

```
> max-event print=6
```

6.9 MISCELLANEOUS COMMANDS

6.9.1 Date

The A53350 and A53355 will set the internal radio date and time automatically by decoding Network Time Protocol (NTP) packets in the Ethernet LAN. The “zone” parameter specified with the “date” or “time” command will then be used to display the date/time in local time. The “zone” value is saved as part of the radio configuration.

If NTP packets are not available, the user can initialize the radio date and time with either the “date” or “time” commands. The parameters for both commands are identical, but the parameter order is different. The date command can be entered as:

```
> date 16-may-2000 10:32:06
```

date=day-month-year

Sets the date used by the radio. The day / month / year parameter may be separated by any valid separator (‘-‘ ‘/’ etc.)

time=hh:mm:ss

This command sets the radio time in hours, minutes and seconds. Use colons to separate the three fields.

zone=zone-code or offset

This command sets the time zone to be used by the radio to translate the NTP time to local time. It can be specified by an offset from GMT (-0800 or +0200 for example), or as a “zone-code”. The valid “zone-codes” and the respective offsets are shown in Table 6-3.

Table 6-3 Zone Codes and Offsets

ZONE	ZONE CODE	OFFSET
Pacific Standard Time	PST	-0800
Pacific Daylight Time	PDT	-0700
Mountain Standard Time	MST	-0700
Mountain Daylight Time	MDT	-0600
Central Standard Time	CST	-0600
Central Daylight Time	CDT	-0500
Eastern Standard Time	EST	-0500
Eastern Daylight Time	EDT	-0400
Greenwich Mean Time	GMT	0000

6.9.2 Help [Command Name]

If no command is specified, displays the complete list of commands. If a command is specified it displays the valid parameter and corresponding values for that specific command.

Example:

```
> help monitor-link
```

6.9.3 History

Displays the previous commands entered.

6.9.4 License

```
key="ASCII string"
```

The "license" command is used to turn ON or OFF a set of optional features or capabilities. The key is a 35-character string combination of ASCII letters, numbers, and hyphens. The key must be input with the syntax as shown in the example below, including hyphens, for the radio to accept it. The characters can be input as upper or lower case.

After entering the key it is necessary to reboot the radio for the feature, enabled by the key, to take effect. Each key is unique for a particular radio serial number and capability, i.e. a key generated to turn ON a capability on one serial number will not work on another radio.

Example:

```
> license key=02EL1-ZGZ42-G0000-00C54-81WAJ-C9BEK
```

6.9.5 Logout

This command closes the current Econsole session.

6.9.6 Reboot

This command resets the radio, causing the software to perform a complete startup sequence. This is equivalent to power cycling the radio off and on.

NOTE**NOTE**

When issuing the Reboot command, any unsaved configuration parameters will be lost. The Routing Table will also be cleared.

6.9.7 Time

`time=hh:mm:ss`

`date=day-month-year`

`zone=zone-code` or `offset`

This command is identical to the “date” command explained above, except for the order of the parameters. It allows the time and date to be entered as:

```
> time 10:32:06 16-may-2000
```

6.9.8 Version

This command displays the radio model and software version.

SECTION 7

NETWORK MANAGEMENT

7.0 NETWORK MANAGEMENT

The radios operate as part of a network environment with many devices. Whether operated by an Internet Service Provider (ISP) or the Information Technology (IT) department of a business, there is often a need to supervise and manage the network from a central Network Operations Center (NOC). This chapter describes the features of the A53350 and A53355 that are useful for this purpose.

7.1 TELNET

7.1.1 General

Telnet, which stands for Telecommunications Network, is a protocol that allows an operator to connect to a remote machine giving it commands interactively. Once a Telnet session is in progress, the local machine becomes transparent to the user it simply simulates a terminal as if there was a direct connection to the remote machine. Commands typed by the user are transmitted to the remote machine and the responses from the remote machine are displayed in the Telnet simulated terminal.

7.1.2 Starting a Telnet Session

In order to start a Telnet session with a radio it is necessary to configure the radio with a unique valid IP address. This is done with the *ip-configuration* command described in the *Commands* section. This initial configuration must be done using either the RS-232 console port or the ECON program.

Once the radio has an IP address, it is necessary to start the Telnet application at the local machine and establish a connection with the IP address of the radio. If the local machine is a PC running Windows, Telnet can be started through HyperTerminal as follows:

1. Start the HyperTerminal application (in a typical Windows installation HyperTerminal can be found from the **Start** button under Programs/Accessories/Communications...)
2. From the **File** menu choose **New Connection**.
3. In the **Name** field enter any name desired and press the OK button. This will open the "Connect To" window.
4. In the last field, titled "**Connect using:**", select **TCP/IP (Winsock)**. The fields above will change to **Host Address:** and **Port Number:**.
5. In the **Host Address** field, type the IP address of the radio, then press the OK button.
6. TCP will now attempt to connect to the specified device. If successful, the radio will request a login name with the prompt **login:**
7. Type **public** followed by the Enter key

The radio will now display its prompt command and any commands may be typed as described in the *Commands* section.

If, after entering the `public` login name, the terminal displays the message "Login Failed", this may be due to the radio being configured to be managed from specific IP addresses. This is explained in the following section.

7.1.3 Telnet Security

The remote management capability through Telnet opens the possibility for an unauthorized user to login to any radio accessible through the Internet. The radio configuration can be password protected with the use of the `lock` and `unlock` commands. If further security is desired it is possible to specify up to four *source IP addresses* that are authorized to initiate Telnet sessions with the radio. When configured in this way, the radio will reject Telnet requests from all IP addresses that are not in the authorized list.

The authorized source IP addresses for Telnet are the same addresses that are authorized to perform SNMP management. They are entered using the `snmp` command described in the *Commands* section and can be viewed with the `display-configuration` command. When this list is empty, the user can initiate a Telnet session from any IP address with the login name `public`. When this list is not empty, Telnet sessions can only be initiated from the listed hosts. Additionally, for each host, the login name must match the string listed for the `community` field.

To use this security feature it is necessary to know the IP address of the local machine. On a PC running Windows, one way to find its IP address is to open a DOS window and issue the command:

```
> ipconfig
```

7.2 SNMP

7.2.1 Command Line Interface Verses SNMP

Configuration settings on the A53350 and A53355 are displayed and modified using a command line interface, it can be accessed using the RS-232 console port, the Econsole program, or via a Telnet session.

In a Network Operation Center (NOC) environment, there is a need for an automated monitoring system to collect on an ongoing basis information from devices in the network for three purposes:

1. To build an inventory of all the devices of the network.
2. To keep track of all devices on the network and raise alarms when any device becomes unreachable (device failed, link down, etc).
3. To maintain statistics on traffic levels in order to implement usage-based charging, or to determine where congestion exists in the network, so that the network can be expanded to accommodate growth.

Command line interfaces are not very suitable for these purposes, and the A53350 and A53355 support the Simple Network Management Protocol (SNMP) to assist in these tasks. SNMP is a simple, transaction-based (command/response) protocol, which allows a variety of third-party software products to query network devices and collect data for these purposes.

For a generic introduction to the SNMP protocol, we recommend the book "The Simple Book - An Introduction to Internet Management" by Marshall T Rose (P T R Prentice-Hall, 1994).

7.2.2 SNMP Description

The SNMP protocol is described in the following documents:

- RFC1157 - Simple Network Management Protocol (SNMP) - <ftp://ftp.isi.edu/in-notes/rfc1157.txt>
- RFC1155 - Structure and identification of management information for TCP/IP-based internets - <ftp://ftp.isi.edu/in-notes/rfc1155.txt>
- RFC1213 - Management Information Base for Network Management of TCP/IP-based internets: MIB-II - <ftp://ftp.isi.edu/in-notes/rfc1213.txt>

SNMP is a specification for the interaction (*protocol*) between the **SNMP agent** embedded in a network device, and the **SNMP manager** software running on another machine in the network.

The data provided by the SNMP agent in a network device is described by a document called the MIB (Management Information Base). **MIB-II** describes the basic information provided by all devices, and additional documents describe optional extensions for components that may not exist in most devices.

Devices may also provide non-standard MIB groups. In order for a network management system to make use of these extended features, the MIB description must be obtained from the device manufacturer and loaded into the management station.

SNMP data travels in IP packets, using the UDP port 161 for the agent, so in order to use SNMP, the device must have an IP address.

7.2.3 Security Considerations in SNMP

SNMP was designed before the Internet grew commercial, and the original design was not secure. Later versions intended to provide security, but grew cumbersome and complex. As a result, most devices provide secure operation in a non-standard way.

The original SNMP design as embedded in the protocol, assigns network devices to named communities. Any transactions exchanged between the agent and the manager, include the name of the community to which they both belong. The agent has a list of which access rights (set, get, trap) it will grant for each community of which it is a member.

In the A53350 and A53355, this has been re-interpreted: The radio has a list of up to 4 management stations from which it will accept requests, and for each one - identified by its IP address - it is indicated what access rights it is granted, and which community string it must use. Requests from all other sources are ignored. Refer to the **snmp** command in the *Commands* section for details on how to configure the radio for management using SNMP..

If no management stations are listed, **get**-requests with the community **public** will be accepted and responded to from any IP address.

7.2.4 Examples of Network Management Systems

Some of the most common network management systems are listed below. All of them provide many similar features, including network status displays showing key devices on a map, where the devices change color if they have alarms, and with provisions for activating a remote paging device if there is a problem.

WhatsUp Gold (Ipswitch Inc)

<http://www.ipswitch.com/>
USD 800 (approx)

SNMPc (Castle Rock Computing, Inc)

<http://www.castlerock.com/>
USD 900 to USD 2700 (approx, depending on options)

OpenView (Hewlett-Packard)

<http://www.openview.hp.com/>
USD 3,000 to USD 10,000

The OpenView product line has been revamped; HP is now positioning it not as a turnkey software product, but as a custom adapted application to be bought through a value-added implementation partner.

Multi-Router Traffic Graphing

<http://www.mrtg.org/>
This is a free open-source software, capacity planning tool.

7.2.5 A53350 and A53355 Management Information Base (MIB)

The A53350 and A53355 implement only the core MIB-II. A management station will see three interfaces in the ***interfaces group***:

- 1 - Bridge
- 2 - Ethernet
- 3 - Radio

The first of these represents the attachment of the SNMP agent to the bridged network. Only IP traffic seen by the embedded host is counted.

The Ethernet device (***ifIndex=2***) represents the traffic passing through the radio's Ethernet port. This is what should be tracked by MRTG.

The third device represents the wireless transceiver. It will appear as ***down*** if the radio does not have a working link to its peer. This is useful for confirming the loss of a link. The traffic counts show all packets to and from the radio, including handshaking between the two radios.

7.3 UDP COMMAND AND DATA INTERFACE

7.3.1 Purpose

The A53350 and A53355 firmware includes an optional command/data interface based on the UDP/IP protocol. This interface can be used for two purposes:

1. As a command interface allowing radio text commands and replies to be encapsulated in UDP/IP packets. This is useful when it is desired to configure the radio from a program running on an external computer

To send and receive **vital packets** which the radio classifies as the highest priority.

With the UDP Command Interface a host computer can issue all the same text commands available through the other interfaces and described in the radio Operator's Manual. The command text, in ASCII, must be encapsulated in an UDP/IP packet addressed to the radio. The radio replies to every command with text also encapsulated in an UDP/IP packet. This reply packet can be addressed to a pre-configured IP address or to the device that generated the command. See the `udp-configuration` command in section 4 for the options to configure this UDP interface.

7.3.2 UDP Command Packet Format

Table 7-1 below shows the structure of the UDP command and reply packets. The host computer always initiates the command, and the radios reply to every command. The command sequence number field, in the reply, "echoes" the contents of the sequence number field in the command.

If the `socket-mode` is set to 2, the radio issues an "unsolicited reply" message on power up to the configured peer-address. This can be used to alert a host that the radio just rebooted. The command sequence number in this power up unsolicited reply is always zero.

The command and reply text is in ASCII. Refer to the *Commands* section for a complete list of all valid commands. Prior to using the UDP interface it is necessary to initialize the radio IP and the UDP configuration (using commands `ip-configuration` and `udp-configuration`) through either the RS-232 console or the Ethernet Econsole ports.

Table 7-1 UDP Command / Reply Packet Information

Bytes	Host to Radio (Command)	Radio to Host (reply)	
0-5	Dest MAC address	Dest MAC address	Ethernet Encapsulation
6-11	Src MAC address	Src MAC address	
12-13	0x0800	0x0800	
14-33	IP header	IP header	UDP/IP encapsulation RFC-768 (UDP) RFC-760 (IP).
34-35	Src port (any)	Src port: radio UDP cmd port	
36-37	Dest port: radio UDP cmd port	Dest port: UDP peer cmd port	
38-39	Length of UDP payload (6-500)	Length of UDP payload (6-500)	
40-41	Checksum	Checksum	Payload
42-45	Command Sequence number	Command Sequence number	
46-47	Pad (all zeroes)	Reply code	
48-	Command text	Reply text	

The values of the “reply code” field are shown in the following table.

Table 7-2 Reply Code Field

Code	Mnemonic	Description
0	CMD_SUCCESS	Command executed successfully
1	CMD_RESTART	Unsolicited reply at startup. A start command must be given.
2	CMD_TRUNCATED	Response text overflow (truncated if over the value specified by max-response-bytes)
3	CMD_NOT_FOUND	Unknown Command
4	CMD_AMBIGUOUS	Ambiguous abbreviation
5	CMD_BAD_ARG_NAME	Illegal or ambiguous argument name
6	CMD_BAD_ARG_VALUE	Argument value out of range
7	CMD_ARG_MISSING	Required argument missing
8	CMD_FAILED	Command failed
9	CMD_DISABLED	A start command must be given

SECTION 8

ANTENNA CHARACTERISTICS, SITE SELECTION & PATH ANALYSIS

8.0 ANTENNA CHARACTERISTICS, SITE SELECTION & PATH ANALYSIS

8.1 RF LINK DESIGN

8.1.1 Antenna Selection

The A53350 and A53355 radio comes equipped with two antenna ports to connect to external antennas. It is very important to select the correct antennas based on the application. This section provides an overview of the major antenna parameters to help select the correct antenna.

8.1.2 Antenna Types

There are a vast number of antenna types designed for various general and special purposes, but despite the huge variety, all designs essentially address two concerns, directionality and gain. These selection criteria are discussed in the following paragraphs, along with a third criterion, polarization.

For the A53350 and A53355, the antenna types listed below will fulfill most installation requirements.

Table 8-1 Antenna Types Available From Siemens

ANTENNA TYPE	Frequency	GAIN	SIEMENS P/N
Omni-directional	900 MHz	12 dBi	Z913-00032-0000
Yagi	900 MHz	15 dBi	Z913-00017-0000
Parabolic	900 MHz	23.5 dBi	Z913-00051-0000
Radome Protected Yagi	900 MHz	10 dBi	Z913-00015-0000
Omni-directional	2.4 GHz	12 dBi	Z913-00025-0000
Yagi	2.4 GHz	15 dBi	Z913-00038-0000
Grid Parabolic	2.4 GHz	17 dBi	Z913-00037-0000
Grid Parabolic	2.4 GHz	24 dBi	Z913-00023-0000

8.1.3 Directionality

An antenna may be designed to receive and transmit in all directions. Such antennas are omnidirectional. The sensitivity and power of an omnidirectional antenna are unfocused; that is, they are spread through a wide volume of space, so the advantage of being able to communicate in all directions is traded off for limited sensitivity and power.

If it is determined that all signals of interest are coming from a definable direction, the omnidirectional antenna can be replaced by a directional or sectorial antenna, which increases sensitivity and power by focusing the beam in the desired direction.

In practice, even omnidirectional antennas take advantage of directionality by focusing their sensitivity and power in the horizontal plane. Rather than waste performance by sending signals into space or into the ground, the omnidirectional antenna redirects its power and sensitivity from these directions, increasing performance in the horizontal plane.

In point-to-point applications, where the direction of communication is known and fixed, a highly focused directional antenna can be used to provide maximum sensitivity and power. In addition, because of its decreased sensitivity in all directions but the desired one, the directional antenna improves performance by rejecting signals not coming from the desired direction. This provides an effective increase in signal-to-noise performance.

A sector antenna has a wider “spread” than a directional (generally between 60 to 120 degrees) which makes it a cross between an omnidirectional and a directional. This is useful in a point to multipoint configuration where multiple sites are grouped in the same general area. The installer can then make use of the higher sensitivity and power but also take advantage of the wider beam pattern and improved front to back ratio.

8.1.4 Gain

“Gain” specifies the receive and transmit performance of any antenna compared to a theoretical “isotropic” antenna or “spherical radiator”. The objective of a directional antenna design is to achieve gain, by improving sensitivity and effective radiating power in specific directions.

Gain is measured and stated in decibels, abbreviated dB. The decibel is a logarithmic unit that represents the magnitude of a signal relative to a specific reference level. A signal 3 dB greater than another has twice as much power, 6 dB represents a fourfold power increase, 9 dB represents an 8-fold increase, etc. For antenna gain the units are usually written as “dBi”, because it measures the increase in signal power relative to an “isotropic” radiating element.

One type of directional antenna available from Siemens is called a “grid parabolic”. This antenna has a gain up to 23.5 dBi, representing power and sensitivity levels up to 256 times greater than those of an isotropic antenna.

8.1.5 Polarization

Another important concept for antenna performance is polarization. An antenna radiates radio waves that vibrate in a specific plane, normally horizontal or vertical. Polarization refers to the restriction of wave vibration to a single plane.

NOTE**NOTE**

Do not confuse polarization with directionality. The plane of wave vibration has nothing to do with the direction of wave propagation. For example, an antenna that focuses its energy in the horizontal plane may be vertically or horizontally polarized.

Designs such as the semi parabolic offer a choice of polarization. Mounting a semi parabolic antenna with the radiating element horizontal provides horizontal polarization, while mounting the antenna with the radiating elements vertical provides vertical polarization.

In setting up the A53350 and A53355 system, either vertical or horizontal polarization can be used, as long as polarization is the same at both ends of each link. It is essential that the two antennas at both ends of one RF link have the same polarization. Differences in polarization among antennas – called “cross-polarization” – can reduce signal considerably.

The choice of polarization – horizontal vs. vertical – is in many cases arbitrary. However, interfering signals from such devices as cellular phones and pagers are generally polarized vertically, and an excellent means of reducing their effect is to mount the system antennas for horizontal polarization.

8.1.6 Antenna Orientation

Directional antennas must be carefully oriented towards each other. Orientation of directional antennas is critical because their sensitivity is greatly reduced outside a fairly narrow angle. Performance of the system can be seriously degraded by misaligned directional antennas. The A53350 and A53355 have a built in feature that allows the installer to use an audio signal to assist in aligning the antenna. Refer to the *Antenna Installation and Alignment* section for details.

8.2 RF PATH ANALYSIS

8.2.1 Line-of-Sight Requirements

At the high operating frequencies of the A53350 (900 MHz) and A53355 (2.4 GHz), radio waves travel in a nearly straight-line path. These frequencies are greatly weakened by substantial obstructions or the absence of a direct path. Simply put, all antennas communicating with each other must be able to physically “see” each other.

For shorter ranges, a degree of obstruction may be acceptable. For example, at less than maximum ranges the radio has some ability to “penetrate” trees and other foliage. On the other hand, geographical features (hills) and large buildings are likely to interfere with communications, and antennas must be elevated to see each other above such objects.

For links covering very long distances (exceeding 5 miles or 8 km) the user also needs to take into account the following factors:

- The curvature of the earth.
- Fresnel Zone clearance.
- Atmospheric refraction.

Figure 8-1 illustrates these concepts with an exaggerated representation of a long link. The following sections describe these effects. Use the “Fresnel Zone Calculator”, shown in Figure 8-2, to make all the computations for the RF path analysis and determine if there is adequate antenna height for the links. The calculator runs on a PC and is available on CD.

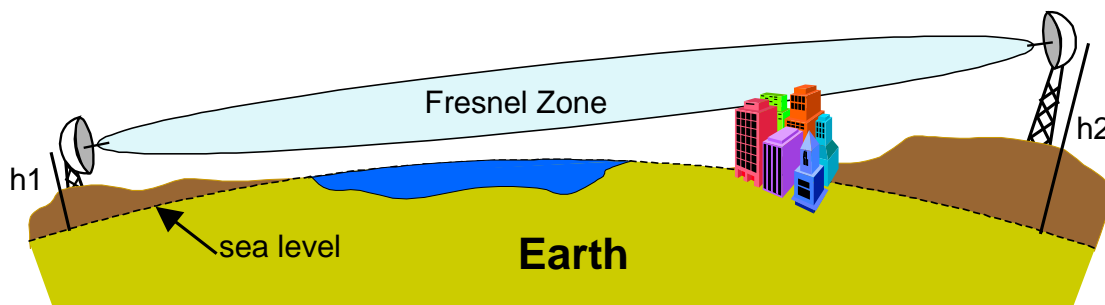


Figure 8-1 Earth Curvature, Fresnel Zone and Antenna Heights

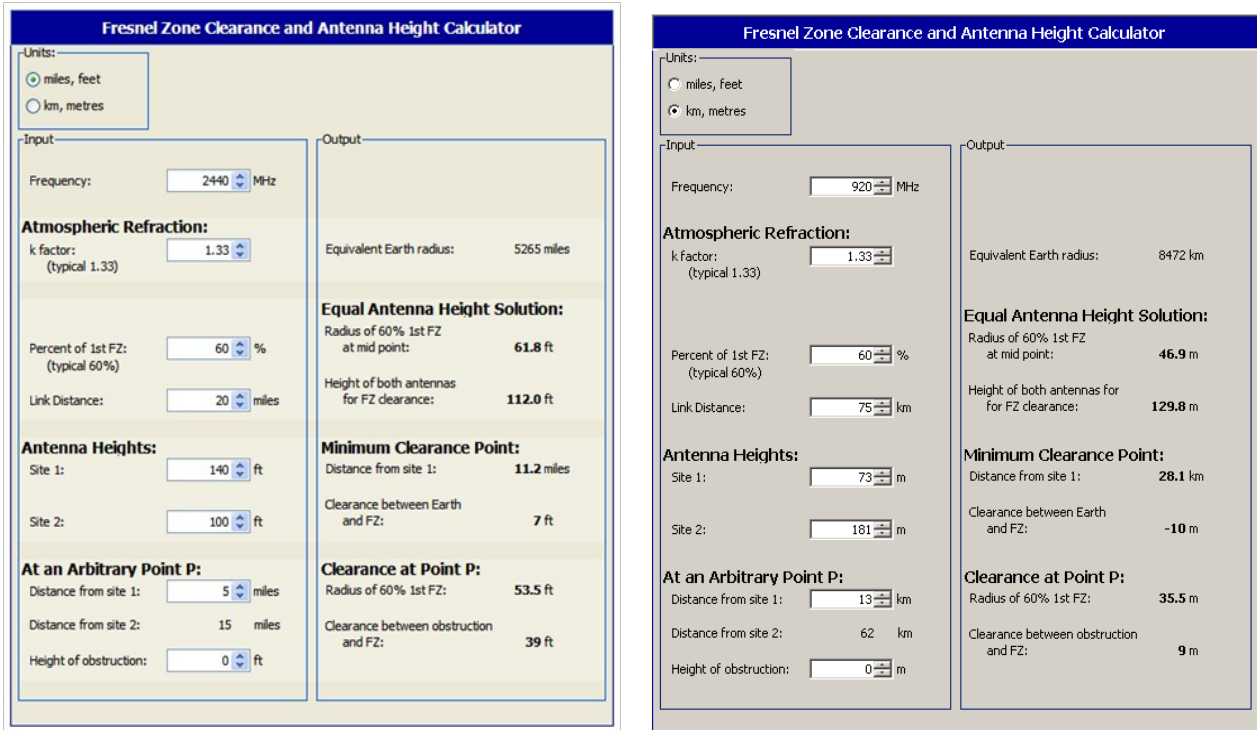


Figure 8-2 Fresnel Zone Calculator

8.2.2 Earth Curvature

With long links the earth curvature can prevent the two antennas from seeing each other. This is illustrated in Table 8-2 and Table 8-3, which show the minimum antenna heights required, at both ends of the link, to simply clear the earth surface at various distances. As the distance grows the effect worsens requiring access to high elevation points to deploy such links. The values in the table used a typical atmospheric refraction factor of 4/3 (see below).

8.2.3 Fresnel Zone

The Fresnel zone is a long ellipsoid that stretches between the two antennas. The **first** Fresnel zone is such that the difference between the direct path (AB) and an indirect path that touches a single point on the border of the Fresnel zone (ACB) is half the wavelength (see Figure 8-3).

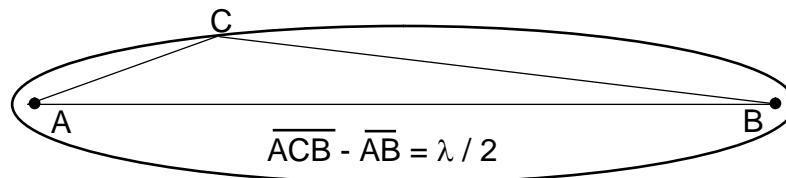


Figure 8-3 Fresnel Zone Definition

If a significant portion of the Fresnel Zone is obstructed the receive-signal-strength at the receiving antenna can be significantly attenuated. A rule of thumb is that at least 60% of the first Fresnel Zone must be clear of any obstructions in order for the radio wave propagation to behave as if it is in "free space".

At 900 MHz half of the wavelength is only 3.085 inches (7.84 cm) and 2.4 GHz half of the wavelength is only 2.4 inches (6.2 cm), at long distances the radius of this ellipsoid can be quite large. This is illustrated in Table 8-2 and Table 8-3, which show the radius of this (60%) ellipsoid at the mid-point for various distances.

Table 8-2 900 MHz and 2.4 GHz Antenna Heights (Meters) to Clear the Earth and 60% of the Fresnel Zone

Distance (km):	5	10	20	30	40	50	60	70
Antenna height to clear earth (meters):	0.4	1.5	6	13	24	37	53	72
60% Fresnel Zone radius at mid-point (meters):	7.5	10	15	18	21	23	26	28
Total antenna height required (meters):	7.9	12	21	31	45	60	79	100

Table 8-3 Antenna Heights (Feet) to Clear the Earth and 60% of the Fresnel Zone

Distance (miles)	5	10	20	30	40	50
Antenna height to clear earth (ft)	3	12	50	113	200	313
60% Fresnel Zone radius at mid-point (ft)	31	44	62	76	87	98
Total antenna height required (ft)	34	56	112	189	287	412

8.2.4 Atmospheric Refraction

Under normal atmospheric conditions radio waves do not propagate in a straight line, they actually bend slightly downward. This is due to "refraction" in the atmosphere that affects radio waves propagating horizontally. To take this downward bending into account, we perform all the RF path calculations using a larger value for the earth radius, such that we can then consider the radio waves as propagating in a straight line.

In the Fresnel Zone calculator the earth radius can be changed by multiplying factor (the "k factor") to take into account different atmospheric conditions. Under normal conditions the "k factor" is 4/3. However unusual weather conditions can cause significant changes to the refraction profile. For a high reliability link it may be necessary to use a lower value for the k factor.

8.2.5 Clearing Obstructions

The calculator allows a quick determination of whether there is enough clearance above a particular obstruction in the RF path, or alternatively, how high to elevate the antennas to clear the obstruction.

For each potential obstruction in the path it is necessary to know its distance from one of the end points and the height of the obstruction. Drawing the path in “Google Earth” is a quick way of identifying buildings or structures that lay in the direct path and finding their distance from the end points. The user may need to use a topographic map, draw the line between the end points, and create an accurate terrain profile. If there are buildings or trees in the path it will be necessary to determine or estimate their height and add it to the terrain elevation at those points.

For each of these potential obstruction points, enter its distance from site 1 in the bottom left input “spinner” of the calculator. On the right hand side the calculator displays the vertical separation between the bottom of the Fresnel Zone and the Earth sea level (“Clearance between Earth and FZ”). This value needs to be larger than the height of the obstruction. If the value is not use the antenna height spinners to increase the height of one or both antennas until that clearance exceeds the height of the obstruction.

8.3 RF LINK BUDGET CALCULATIONS

If there is radio-line-of-sight for the link (as explained in the previous section), then it is easy to compute the receive-signal-strength at the receiving radio and from there determine if there is an adequate “fade margin”.

Use the “RF Link Budget Calculator”, shown in Figure 8-4, to make all the required computations and evaluate the trade-off between antenna gains, cable losses etc. The calculator runs on a PC and is available on CD.

The figure displays four screenshots of software calculators. The top row shows two instances of the 'RF Link Budget Calculator'. The left instance has input values: Frequency: 2440 MHz, Tx Power: 23 dBm, Tx Cable Loss: 0.9 dB, Tx Antenna Gain: 9 dBi, Distance: 6.2 miles, Rcv Antenna Gain: 24 dBi, Rcv Cable Loss: 0.9 dB, Rcv Sensitivity: -90 dBm, and Fade Margin: 24 dB. The output shows a Fade Margin of 24.0 dB, Free Space Loss of 120.2 dB, and Rcv Signal Strength of -66.0 dBm. The right instance has input values: Frequency: 920 MHz, Tx Power: 23 dBm, Tx Cable Loss: 0.9 dB, Tx Antenna Gain: 10 dBi, Distance: 10.3 miles, Rcv Antenna Gain: 10 dBi, Rcv Cable Loss: 0.9 dB, Rcv Sensitivity: -90 dBm, and Fade Margin: 15 dB. The output shows a Distance of 10.3 miles, Free Space Loss of 116.2 dB, and Rcv Signal Strength of -75.0 dBm. The bottom row shows two instances of the 'Cable Loss Calculator'. The left instance has input values: Cable Type: other..., Loss per 100 ft: 4.0 dB, Cable Length: 3 ft, and No. of connectors: 1. The output shows a Total Cable Loss of 0.3 dB. The right instance has input values: Cable Type: LMR195, Loss per 100 ft: 11.3 dB, Cable Length: 3 ft, and No. of connectors: 2. The output shows a Total Cable Loss of 0.7 dB.

Figure 8-4 RF Link Budget Calculator

Even though the link is bi-directional, in the calculator Site 1 is viewed as the transmitter and Site 2 as the receiver. If configuring both radios with the same transmit power the results for both directions are identical. If configuring the transmit power of the two radios to different values compute the link budget in each direction separately.

The RF link budget calculations are made a lot easier by using “decibel” units (dB). The decibel is a logarithmic scale that compares a parameter value against a specific reference. The advantage of working in dB is that it is possible to simply add all the parameters that boost the signal and subtract the ones that attenuate it.

The following paragraphs follow an RF signal from the transmit radio to the receive radio, explaining the various parameters and how they apply to the A53350 and A53355 radio

8.3.1 Transmit Power

The RF signal starts at the output of the radio at Site 1 with a specific transmit power. In the A53350 and A53355 it is possible to configure that power from 0 to 27 dBm (the “m” in the dBm unit indicates that this power is measured relative to 1 milliwatt).

Cable Losses

The radio is connected to the antenna through an RF coaxial cable. As the signal propagates through this cable it is attenuated. The total attenuation (loss) depends on the frequency, cable type, cable length and number of connectors. The user can use the “Cable Loss Calculator” (at the bottom of the RF Link Budget calculator), which includes the characteristics for several RF cable types. If the cable is not listed just enter its “loss per 100 ft” (or loss per meter) at the operating frequency and the calculator computes the total loss. Note that each connector along the way introduces additional attenuation, typically around 0.25 dB per connection.

The A53350 and A53355 are housed in a watertight enclosure for mounting it in very close proximity to the antenna. This will keep the RF coaxial cable very short and therefore reduce these losses.

8.3.2 Antenna Gain

The transmit signal is radiated through the antenna at Site 1. The antenna focuses the radiated energy in a specific direction or plane, boosting the signal strength in that specific direction. That boost is measured by the “antenna gain” in dBi (the “i” in the dBi unit indicates that the antenna gain is measured in relation to an isotropic radiating element).

Distance and Free Space Loss

Once the signal is in the air it propagates towards the receiver but suffers attenuation as it radiates away from the transmitter. If there are no obstructions the total attenuation is called the Free-Space-Loss (FSL). This loss is a function of the frequency, f , and the distance, d . It can be computed, in dB, from the following expressions:

$$\text{FSL} = 32.4 + 20 \log f + 20 \log d \quad (\text{with } f \text{ in MHz and } d \text{ in km})$$

or

$$\text{FSL} = 36.6 + 20 \log f + 20 \log d \quad (\text{with } f \text{ in MHz and } d \text{ in miles})$$

The calculator computes this loss and displays it in the output panel. An easy rule to remember is that the free space loss increases by 6 dB every time the distance is doubled.

8.3.3 Receive Signal Strength

The signal is much weakened when it reaches the receiving antenna. That antenna will give it a boost, measured by the antenna gain in dBi. The signal is then attenuated as it propagates down the RF coaxial cable that connects that antenna to the radio. The Receive Signal Strength (RSS) parameter refers to the strength of the signal that finally arrives at the RF connector of the receiving radio at site 2. With all the gains and losses measured in dB, this receive signal strength is computed with the following expression:

$$\text{RSS} = \text{TxPower} - \text{CableLoss1} + \text{AntGain1} - \text{FSL} + \text{AntGain2} - \text{CableLoss2}$$

The RF Link Budget calculator always computes and displays this value in the output panel.

8.3.4 Receive Sensitivity

The radio Receiver Sensitivity is the receive-signal-strength at the input of the radio at which point its "Bit Error Rate (BER)" is at a specified value. Most manufacturers, including Siemens, use a BER of 1×10^{-6} (1 bit error in one million bits) to specify the radio receiver sensitivity. However make sure to check the specifications when comparing the sensitivity in radios from different manufacturers.

The user can configure the A53350 and A53355 radio to operate at four different RF speeds. Lower speeds will provide better receiver sensitivity. Use the appropriate value from the table below:

Table 8-4 RF Speed/Receiver Sensitivity

RF Speed (Mbps):	2.75	1.375	0.500	0.250
Receiver Sensitivity (dBm):	-90	-93	-95	-98

8.3.5 Fade Margin

The Fade Margin is the difference between the Received Signal Strength and the radio Receiver Sensitivity. When deploying a link it is desirable to have a Receive Signal Strength that is sufficiently above the radio Receiver Sensitivity in order to survive signal fading due to a variety of factors. These factors might include slight misalignment of the antennas, losses due to fog and rain, etc. As a rule of thumb it is best to get at least 15 dB of fade margin in the links.

With the calculator select whether to compute the Distance, the Fade Margin or the Transmit Power. All these parameters are inter-related as described above. When selecting one parameter to compute, its value in the input panel is disabled.

All the input values are controlled with “spinners”. When changing any input the calculator instantly updates the output values. By seeing the results immediately the user can quickly evaluate trade-offs between different parameters.

8.3.6 Cable Loss (Attenuation) – Manual Calculation

The A53350 and A53355 are housed in a watertight enclosure so that it may be mounted in very close proximity to the antenna. Using short cables to connect the radio to the antenna reduces signal losses. Table 8-5 shows loss per 100 feet (30 meters) at 2.4 GHz and 900 MHz for typical antenna cable types.

Table 8-5 Loss at 2.4 GHz and 900 MHz for Standard Coaxial Cable Types

CABLE TYPE	LOSS PER 100 FT. (30 M) @ 2.4 GHz	LOSS PER 100 FT. (30 M) @ 900 MHz
RG-8 A/U	14.4 dB	7.0 dB
Belden 9913	8.0 dB	4.3 dB
LMR 195	19 dB	9.98 dB
LMR 400	6.7 dB	3.9 dB

To determine total cable loss for the installation, perform the following calculation:
 For US units, multiply length in feet by the loss figure and divide by 100.
 For metric units, multiply length in meters by the loss figure and divide by 30.
 For example, for a 75-foot length of Belden 9913, the loss is:

$$\frac{75 \times 8.0}{100} = 6.0 \text{ dB}$$

8.3.7 Connector Loss

Loss is introduced with each pair of cable connectors. Attenuation losses of some standard connector types are shown in Table 8-6.

Table 8-6 Attenuation Loss Per Connector Type

CONNECTOR TYPE	LOSS PER CONNECTOR
N-Type	0.25 dB
SMA-Type	0.25 dB

The loss of each pair of connectors on all cables must be included to determine the total signal loss (attenuation) between the radio and the antenna.

8.4 ANTENNA GROUNDING AND PROTECTION



WARNING

AS AN ELEVATED METAL OBJECT WITH A WIRE CONNECTION BELOW, AN ANTENNA IS AN EXCELLENT LIGHTNING ATTRACTOR, AND AN EFFECTIVE GROUND MUST BE PROVIDED TO DEFLECT LIGHTNING STRIKES TO GROUND. AN ADDITIONAL ADVANTAGE OF EFFECTIVE SYSTEM GROUNDING IS THE MINIMIZING OF ELECTRICAL NOISE AND INTERFERENCE, WHICH CAN SIGNIFICANTLY DEGRADE SYSTEM PERFORMANCE.

Grounding involves providing a good, very low resistance connection from the antenna and radio to earth ground to provide a better path for lightning and electrical noise than that through the equipment. The following points should be taken into account in setting up system grounding:

- The antenna should be mounted on a mast or tower that is well grounded to earth.
- All antenna lead connectors should be correctly installed to provide a good, solid connection to the cable shield.
- Threaded couplings mating antenna lead connectors should be clean and tight; bayonet type connectors should *not* be used.
- Weatherproof connectors must be used for outdoor connections to prevent corrosion, which will interfere with grounding.
- All power and antenna grounds should be made common at a single point such as an equipment rack, cabinet enclosure chassis, or antenna tower. This single-point ground should have a solid ground connection to earth.
- If the unit is installed indoors, a surge arrester or lightning protector should be installed at the point where the antenna cable enters the building or cabinet. The lightning protector should be properly grounded at the single-point chassis ground. Carefully follow the installation instructions provided by the manufacturer of the protection device. Appropriate lightning protectors are available from Siemens as shown in Table 8-7 below.

Table 8-7 Lightning Arrester / Surge Protection

ARRESTER TYPE	SIEMENS P/N
NF to NF 800 MHz-2.1 GHz	Z803-00141-0000
NF to NM 2.4 GHz	Z803-00131-0000
NF to NF 2.4 GHz	Z803-00132-0000

APPENDIX A COMMAND SUMMARY

A COMMAND SUMMARY

This appendix lists all commands organized in the respective functional groups. Parameters that are part of the radio configuration are identified by having an entry under the “Factory Configuration” heading. When entering a command, if a parameter that is part of the radio configuration is omitted, the value for that parameter is not modified.

For commands that are not part of the radio configuration, if a parameter is omitted, the value for that parameter defaults to the value indicated in bold.

Table A-1. Configuration Management Commands

COMMAND	PARAMETERS	VALUES
change-password	enable-configuration	<string>
display-configuration	source	current main alternate basic factory
load-configuration	source	main alternate basic factory
lock		
save-configuration	destination	main alternate
unlock	enable-configuration	<string>

Table A-2. Major Configuration Parameters

COMMAND	PARAMETERS	VALUES	FACTORY CONFIGURATION
distance-max	maximum units	10..160 km or miles	80 km
ethernet	speed	auto-10, 10hdx, 10fdx, 100hdx, 100fdx, auto, off	auto
	timeout-sec	5..10000	30
	multi-cast-timeout-sec	5..10000	30
node	type	hub, remote, root- 1,root-2, branch, leaf	remote
	max-remotes	1..29	29
	redundancy	1..4	2
	name	(23 character string)	rmt-nnnnn
	network-id	0..65535	0
	location	(25 character string)	
	contact	(25 character string)	
rf-receive-setup	antenna	a, b	rf-1:a, rf-2:b
	receive channel	min...max	rf-1:12 rf-2:25
	transmit channel	min...max	rf-1:12 rf-2:25
	speed-mbps	[speeds]	max
	power-dBm	0...max_power	18
rf-transmit-setup	antenna	a, b	rf-1:a, rf-2:b
	receive channel	min...max	rf-1:12 rf-2:25
	transmit channel	min...max	rf-1:12 rf-2:25
	speed-mbps	[speeds]	max
	power-dBm	0...max_power	18
single-node-reboot	timeout-sec	15..20000	900
time-division-duplex	sync-mode	off, auto	auto
	cycle-period-ms	20, 40	40
	transmit-percent	auto, 10, 20, 30, 40, 50, 60, 70, 80, 90	auto

Table A-3. Internet Protocol (IP) Management Commands

COMMAND	PARAMETERS	VALUES	FACTORY CONFIGURATION
ip-configuration	address	ip address	
	netmask	ip address	
	gateway	ip address	
	dhcp-client	0, 1	off
ping	destination	ip address	
	count	0..500 (def 4)	
	size-bytes	32..1400	
snmp	manager	ip address	
	community	ASCII string (9 max)	
	access	g, gs, gt, gst	
	authentication-traps	0, 1	
	delete	1..4	
udp-configuration	console	on, off	off
	vital-port-1t	1..0xFFFF	0
	vital-port-2t	1..0xFFFF	0
	command-port	1..0xFFFF	422
	max-response-bytes	500..1466	512
	socket-mode	1, 2	1
	peer-address	ip address	
	peer-command-port	1..0xFFFF	0

Table A-4. Installation and Link Monitoring Commands

COMMAND	PARAMETERS	VALUES	FACTORY CONFIGURATION
antenna-alignment-aid	mode	off a-antenna b-antenna	off
monitor-flow	clear	0, 1	
monitor-link	node	1, 4, 5, 6...	
	clear	0, 1	
	header	0, 1	
	line-feed	0, 1	
show-tables	table	status radios links ethernet econsole ip-stack	
	format	count times	
spectrum-analysis	antenna	a-antenna b-antenna	
	display	graph table	
	dwell-time-ms	1...1000 (def: 20)	
time-analysis	channel	0..50	
	input	a-antenna b-antenna	
	display	graph table	
	dwell-time-ms	1, 2, 5, 10, 20 , 50, 100, 200, 500	

Table A-5. File Utilities

COMMAND	PARAMETERS	VALUES
console-speed-bps	baud-rate-bps	9600, 19200, 38400 57600, 115200
copy-file	source	filename
	destination	filename
delete-file	filename	filename
directory	format	short full
download-file	source	path\filename
	destination	path\filename
	method	binary inline
run-file	filename	filename
set-default-program	filename	filename

Table A-6. Event Logging Commands

COMMAND	PARAMETERS	VALUES	FACTORY CONFIGURATION
clear-log	region	all-events reboot-reasons	
display-log	region	end tail beginning all-events reboot-reasons	
	length	1..500 (def 10)	
	id	0...200	
	min-level	0...7 (def: 0)	
	max-level	0...7 (def: 7)	
max-event	save	0..7	5
	print	0..7	3

Table A-7. Miscellaneous Commands

COMMAND	PARAMETERS	VALUES	FACTORY CONFIGURATION
date	date	dd-mmm-yyyy	
	time	hh:mm:ss	
	zone	offset or code	GMT
help	command		
history			
license	key	<35 character string>	
logout			
reboot			
time	time	hh:mm:ss	
	date	dd-mmm-yyyy	
	zone	offset or code	GMT
version			

This page intentionally left blank.

APPENDIX B SPECIFICATIONS

B SPECIFICATIONS

Table B-1 A53355 2.4 GHz ENET SSR Specifications

RF SPECIFICATIONS	
RF Frequency Band	2400 MHz to 2483 MHz
RF Signal Bandwidth (-20 dBc)	4.6 MHz
RF Channels	11 (non-overlapping)
Transmitter Output Power	0 to 27 dBm
Modulation Type	direct sequence spread spectrum
Receiver Sensitivity (10 ⁻⁶ BER) and Data Rates	-98 dBm (@ 250 kbps) -95 dBm (@ 500 kbps) -93 dBm (@ 1375 kbps) -90 dBm (@ 2750 kbps)
Maximum Receive Signal	-30 dBm (to stay in receiver linear region) +20 dBm (to avoid damage)
ETHERNET PORT	
Speed	10/100 BaseT, full, half duplex (auto-negotiate)
Connector	8 pin circular (Lumberg 0321-08)
NETWORKED OPERATION	
Network Topologies	Point-to-point, Point-to-multipoint, Mesh Tree, Linear Network, Roaming
Management	Telnet, SNMP (MIB2), or Econsole reach any node over wireless
Security	Optional 3-DES or AES encryption, 32 bit network ID/Password
CONSOLE/DIAGNOSTIC PORT	
Interface	RS-232/V24, asynchronous 9600 to 115 kbaud
Connector	3 pin circular (Lumberg 0321-03)
POWER REQUIREMENTS	
Input Voltage (Outdoor Unit)	+10 to +58 Volts DC
Input Voltage (AC)	110 VAC or 220 VAC (with external power supply)
Power Consumption	less than 7 Watts
Transient Max. Peak Power	1500 W (with 10/1000 us waveform)
Transient Max. Peak Current	35A (with 10/1000 us waveform as defined by R.E.A.)
ENVIRONMENT	
Temperature	-40 to +70 Degrees C
Max. Humidity	95% non-condensing
MECHANICAL	
Dimensions	4.72" wide x 8.66" high x 2.20" deep (120mm W x 220 H x 56 D)
Weight	3.4 lbs. (1.5 Kg).

Table B-2 A53350 900 MHz ENET SSR Specifications

RF SPECIFICATIONS	
RF Frequency Band	902 MHz to 928 MHz
RF Signal Bandwidth (-20 dBc)	1.6 MHz
RF Channels	13 (non-overlapping)
Transmitter Output Power	0 to 27 dBm
Modulation Type	direct sequence spread spectrum
Receiver Sensitivity (10 ⁻⁶ BER) and Data Rates	-103 dBm (@ 100 kbps) -100 dBm (@ 200 kbps) -98 dBm (@ 500 kbps) -95 dBm (@ 1000 kbps)
Maximum Receive Signal	-30 dBm (to stay in receiver linear region) +20 dBm (to avoid damage)
ETHERNET PORT	
Speed	10/100 BaseT, full, half duplex (auto-negotiate)
Connector	8 pin circular (Lumberg 0321-08)
NETWORKED OPERATION	
Network Topologies	Point-to-point, Point-to-multipoint, Mesh Tree, Linear Network, Roaming
Management	Telnet, SNMP (MIB2), or Econsole reach any node over wireless
Security	Optional 3-DES or AES encryption, 32 bit network ID/Password
CONSOLE/DIAGNOSTIC PORT	
Interface	RS-232/V24, asynchronous 9600 to 115 kbaud
Connector	3 pin circular (Lumberg 0321-03)
POWER REQUIREMENTS	
Input Voltage (Outdoor Unit)	+10 to +58 Volts DC
Input Voltage (AC)	110 VAC or 220 VAC (with external power supply)
Power Consumption	less than 5 Watts
Transient Max. Peak Power	1500 W (with 10/1000 us waveform)
Transient Max. Peak Current	35A (with 10/1000 us waveform as defined by R.E.A.)
ENVIRONMENT	
Temperature	-40 to +70 Degrees C
Max. Humidity	95% non-condensing
MECHANICAL	
Dimensions	4.72" wide x 8.66" high x 2.20" deep (120mm W x 220 H x 56 D)
Weight	3.4 lbs. (1.5 Kg).

APPENDIX C CHANNEL FREQUENCY ASSIGNMENT

C CHANNEL FREQUENCY ASSIGNMENTS

C.1 2.4 GHz Channel Frequency Assignments

The center frequency of each channel can be determined by the following expression:

$$\text{Freq(MHz)} = 2400 + 2 \times \text{Channel_number}$$

Table C-1 shows the frequencies for all channels that fall in the ISM band. Table C-2 shows the suggested channel allocation.

Table C-1. Channel Frequencies in the 2.4 GHz ISM Band

Chan	Freq (GHz)	Chan	Freq (GHz)	Chan	Freq (GHz)	Chan	Freq (GHz)
1	2.402	11	2.422	21	2.442	31	2.462
2	2.404	12	2.424	22	2.444	32	2.464
3	2.406	13	2.426	23	2.446	33	2.466
4	2.408	14	2.428	24	2.448	34	2.468
5	2.410	15	2.430	25	2.450	35	2.470
6	2.412	16	2.432	26	2.452	36	2.472
7	2.414	17	2.434	27	2.454	37	2.474
8	2.416	18	2.436	28	2.456	38	2.476
9	2.418	19	2.438	29	2.458	39	2.478
10	2.420	20	2.440	30	2.460	40	2.480

Table C-2. Suggested Channel Allocation

Number of Non-Overlapping Channels S	Suggested Channel Allocation	Frequency Separation (MHz)
13	3, 6, 9, 12, 15, 18, 21, 24, 27, 30, 33, 36, 39	6.0
10	2, 6, 10, 14, 18, 22, 26, 30, 34, 38	8.0
8	3, 8, 13, 18, 23, 28, 33, 38	10.0

C.2 900 MHz Channel Frequency Assignments

The center frequency of each channel can be determined by the following expression:

$$\text{Freq(MHz)} = 900 \times \text{Channel number}$$

Table C-3 shows the frequencies for all channels that fall in the 900 MHz ISM band. Table C-4 shows the suggested channel allocation.

Table C-3. Channel Frequencies in the ISM Band

Chan	Freq (MHz)	Chan	Freq (MHz)	Chan	Freq (MHz)
1	---	11	911	21	921
2	---	12	912	22	922
3	903	13	913	23	923
4	904	14	914	24	924
5	905	15	915	25	925
6	906	16	916	26	926
7	907	17	917	27	927
8	908	18	918	28	---
9	909	19	919	29	---
10	910	20	920	30	---

Table C-4. Suggested Channel Allocation

Number of Non-Overlapping Channels	Suggested Channel Allocation	Frequency Separation (MHz)
13	3, 5, 7, 9, 11, 13, 15, 17, 19, 21, 23, 25, 27	2.0
9	3, 6, 9, 12, 15, 18, 21, 24, 27	3.0
7	3, 7, 11, 15, 19, 23, 27	4.0
5	5, 10, 15, 20, 25	5.0
4	6, 12, 18, 24	6.0

C.3 Channel Restrictions

The frequencies used by the A53350 and A53355 have some restrictions when used outside of the U.S. and Canada. The 2.4 GHz ISM band is universal globally however the 900 MHz ISM band conflicts with the GSM bands used in most other countries. These restrictions eliminate the use of the majority of the 900 MHz ISM band. Therefore using the 900 MHz band in these areas is not recommended. Australia and Brazil have only a portion of the channels restricted and use of the 900 MHz band in these countries with good results is possible. The Table below shows the frequencies available in Australia and Brazil. Frequencies in red are restricted and will be locked out of the A53350 radios exported to these countries.

Table C-5 900 MHz ISM Frequencies (Australia and Brazil)

Chan	Freq (MHz)	Chan	Freq (MHz)	Chan	Freq (MHz)
1	---	11	911	21	921
2	---	12	912	22	922
3	903	13	913	23	923
4	904	14	914	24	924
5	905	15	915	25	925
6	906	16	916	26	926
7	907	17	917	27	927
8	908	18	918	28	---
9	909	19	919	29	---
10	910	20	920	30	---

NOTE

NOTE

Rules and regulations governing frequency spectrum is constantly changing. Consult the regulating agency for licensing and spectrum management in the area of use before using the A53350 and A53355 radio.

This Page Intentionally Left Blank

APPENDIX D

D ETHERNET CONSOLE PROGRAM

D.1 Short description

The Ethernet console program was developed in order to accommodate the remote configuration of a radio, i.e. the configuration in cases where the physical access to the radio is not feasible, or it is cumbersome. The software consists of two parts: the client and the server. The client runs on the administrator's PC, while the server runs on the radio.

The communication is done via a TCP-like protocol. There is an acknowledgment for every packet that is sent, as well as a retransmission mechanism when a packet gets lost.

Each radio allows multiple sessions, i.e. more than one client can be connected concurrently to the same server (radio). Nevertheless, for performance reasons, it is not recommended to have more concurrent sessions than they are really needed, and definitely not more than the maximum number which currently is 4.

D.2 System requirements

- MS Windows™ versions: Win95, Win98, Windows ME, WinNT, Win2000, WinXP
- NetBIOS installed
- WinPCap installed

Note: With regard to the Windows NT platform, the code has been tested with versions 4.0, and later.

D.3 Installation for Windows

In order to install the WinPCap library, if not already installed, just click on WinPCap.exe. Support and updates for this library can be found at <http://netgroup-serv.polito.it/winpcap/>. It is strongly suggested to uninstall older versions of the library and reboot the machine before installing the new one.

NetBIOS is a software component that comes by default with all Windows systems, so it should not be necessary to install it. To start Econsole, simply open an MS-DOS window and type *econ*. For available command line arguments, please read the following "*Input arguments*" section.

D.4 Included files

- *win_readme.doc*
- *econ.exe* - The EConsole client
- *WinPCap* - The Windows installer for the WinPCap library
- *input_script.txt* - A sample input script file that contains a list of radio commands.

D.5 Input arguments

The following arguments can be used in the command line, even though none of them is required.

D.5.1 Input file

There are two sources for the input commands: the keyboard, or a text file. The second option is useful when running the same set of commands periodically, so try to avoid retyping them every time it is desired to execute them. If there is an input file in the command line, then the keyboard will be deactivated and only the function keys will be available. If the specified file cannot be found, the application will be terminated.

Example:

```
C: > econ -i input.txt
```

Sample input file:

```
help
# this is a comment - note that the character # must appear as the fist character
time
date
# the following is a local command specifying a delay in seconds
. delay 10
time
. delay 1.5
version
logout
```

As shown in the above file, all the lines are interpreted as radio command, unless:

- a) They start with the character “#” which implies a comment.
- b) They start with the character “.” which implies a local command. Currently there is only one local command, namely the **delay** <time in secs>

NOTE**NOTE**

All the input scripts should end with the logout command. Since all the commands are terminated with the new line character, there must be one command per line and after the final logout command it is necessary to have an extra blank line.

D.5.2 Output file

When desired to capture the output of a session into a text file, pass the filename as an argument. If the file does not exist it will be created, otherwise it will be overwritten.

Example:

```
> econ -o output.txt
```

D.5.3 Radio MAC address

If interested in a specific radio, pass its MAC address and let the client ignore any response from other radios. That's very handy when always getting connected to the same radio and it is desired to avoid the manual selection of a preferred one. Very useful also in the case of using scripts for fully automated procedures.

Example:

```
> econ -r 00:78:24:22:BA:4F
```

D.5.4 Radio Serial Number

The same functionality as above (see Radio MAC address) can be achieved by providing the radio serial number, instead of the radio physical address. Note do not include the initial UC characters of the serial number (i.e. type *11078* instead of *UC11078*)

Example:

```
> econ -r 11787
```

D.5.5 Local Physical Address

Even though econsole identifies the PC local physical address automatically, there are some cases in which the user wants to specify the local address on his/her own. These cases usually arise when there are multiple NIC cards with the same names under WinNT operating system. In such case, the econ might pick up the wrong MAC address, and therefore the user should supply manually the physical address as a command line argument.

Example:

```
> econ -m 00:78:24:22:BA:4F
```

D.5.6 Inverse Screen Colors

The default settings can be changed (white texture on black background) by providing the -b option, which will change the settings to black characters on white background.

Example:

```
> econ -b
```

D.5.7 Change the console window size

Currently the user can specify two values, either 25 or 50. These values indicate the number of lines of the MS-DOS window.

Example:

```
> econ -l 50
```

D.5.8 Help

Function keys, including F1, are activated after connection to a radio. To get help from the command line, use the -h argument.

Example:

```
> econ -h
```

Syntax:

```
econ <argument list>
```

```
argument list = argument list | argument | {}
```

```
argument = -o outputfile | -i inputfile | -r MAC address
```

Examples:

It is desired to read a list of commands from the text file called in.txt, and capture the output to a text file called out.txt and there is interest in a specific radio with MAC address equal to 00:78:24:22:BA:4F. In that case, start the EConsole with the following arguments (the arguments order is irrelevant):

```
> econ -i in.txt -o out.txt -r 00:78:24:22:BA:4F
```

```
or . . .
```

If reading from the keyboard, and are interested in capturing the output of the session, use the following syntax:

```
> econ -o out.txt
```

Since no input file was specified, it is assumed that the keyboard will be used for input, and ALL radios will participate in the discovery process.

D.6 Function Keys

Currently there are 6 different function keys.

- F1** - Online help - gives a short description of the other function keys and the input arguments.
- F2** - Active/deactivate diagnostic messages. Initially diagnostic messages are not shown, to see them press F2. Diagnostic messages include warnings, and retransmission info in order to get an idea of the connection's speed/integrity. Error messages are always shown.
- F3** - Terminates the current session and closes the application.
- F4** - Close the session with the current radio and display the results of the initial discovery phase to allow the user to connect to a new radio.
- F5** - Reverse/Restore screen settings. Initially the screen displays white letters on black background, this function key is used to reverse it to black letters on a white background.
- F6** - Increases the console window buffer. This introduces a side bar which enables the user to scroll up and down. Available in Windows NT Only.

D.7 Troubleshooting & Updates

D.7.1 Common problems

1. Failed to open adapter.

This problem usually occurs when the WinPCap library is not installed properly, or an older version of it is installed. Ensure the Ethernet adapters are working properly.

2. Cannot find radio(s) even though they are running properly.

Make sure that:

- The Ethernet cables are OK
- There is connection to the right network segment (i.e. try all Ethernet adapters)
- the use of the proper MAC address. The system tries to identify the adapter physical address through some NetBIOS calls in the Win9X case, or some NDIS queries in the WinNT/Win2000 case. If NetBIOS is not installed, the econ will probably use the wrong local host MAC address. Also, if there is more than one Ethernet adapter installed with the same name, this might cause a problem in the WinNT case.

Resolution: Use the command line argument to specify the correct physical local address. See all the local physical address by executing the *ipconfig -all* command.

Example:

```
> econ -m 00:78:24:22:BA:4F
```

3. Find a radio but not getting connected.

Check if the maximum number of sessions has been reached. The maximum number of sessions on the server side is limited to four, therefore do NOT connect to the same radio multiple times if not absolutely necessary. When the number of sessions reaches the limit the radio will ignore any new discovery messages.

Another reason might be a unreliable RF link causing a high packet loss. Since during the discovery phase there isn't any retransmission mechanism, it is quite possible to "see" the radio, but weren't able to connect to it, because the connection request packet was lost. In such case, try to connect again.

4. High drop rate - screen freezes momentarily - connection times out.

There are two possible causes:

- a) The link between the client (PC) and the server (radio) is very weak. If the packet drop rate is more than 20%, then the connection is problematic.
 - b) There are multiple sessions opened on the same server. With many concurrent sessions the server response may be noticeably slower. Always close the session gracefully by executing the *logout* radio command, and not by closing the MS-DOS console. If the *logout* command is not issued the session at the server will remain open for an additional 15 minutes. Use the *list long* command to find out the number of open sessions.
5. If a client is inactive for 30 minutes, and attempts are made to type a new command, the client may receive an "Unable to transfer packet" message, or a "Session timeout - application will be closed" message.

An open session times-out after 15 minutes of inactivity on the server side, or 30 minutes on the client side.

D.8 Acknowledgments

The WinPCap library was obtained from "Politecnico di Torino" and the code is distributed in binary form as part of the Econsole. The following copyright notice applies to that library.

```

/*
* Copyright (c) 1999, 2000
* Politecnico di Torino. All rights reserved.
*
* Redistribution and use in source and binary forms, with or without
* modification, are permitted provided that: (1) source code distributions
* retain the above copyright notice and this paragraph in its entirety, (2)
* distributions including binary code include the above copyright notice and
* this paragraph in its entirety in the documentation or other materials
* provided with the distribution, and (3) all advertising materials mentioning
* features or use of this software display the following acknowledgement:
* "This product includes software developed by the Politecnico
* di Torino, and its contributors." Neither the name of
* the University nor the names of its contributors may be used to endorse
* or promote products derived from this software without specific prior
* written permission.
* THIS SOFTWARE IS PROVIDED "AS IS" AND WITHOUT ANY EXPRESS OR IMPLIED
* WARRANTIES, INCLUDING, WITHOUT LIMITATION, THE IMPLIED WARRANTIES OF
* MERCHANTABILITY AND FITNESS FOR A PARTICULAR PURPOSE.
*/

```

This page intentionally left blank.

APPENDIX E CABLE DIAGRAMS

E CABLE DIAGRAMS

This Appendix contains the following diagrams:

Figure E-1 shows the assembly drawing for the Power/Data cable (CAT5) used to connect the Radio to a Power Inserter Unit.

Figure E-2 shows the assembly drawing for a Console cable for connection to a standard computer terminal used for radio configuration and monitoring.

Figure E-3 shows the assembly drawing for a 3-pin Audio Adapter cable for connection to the radio auxiliary port, and used with a pair of standard headphones as an antenna alignment aid.

This page intentionally left blank.

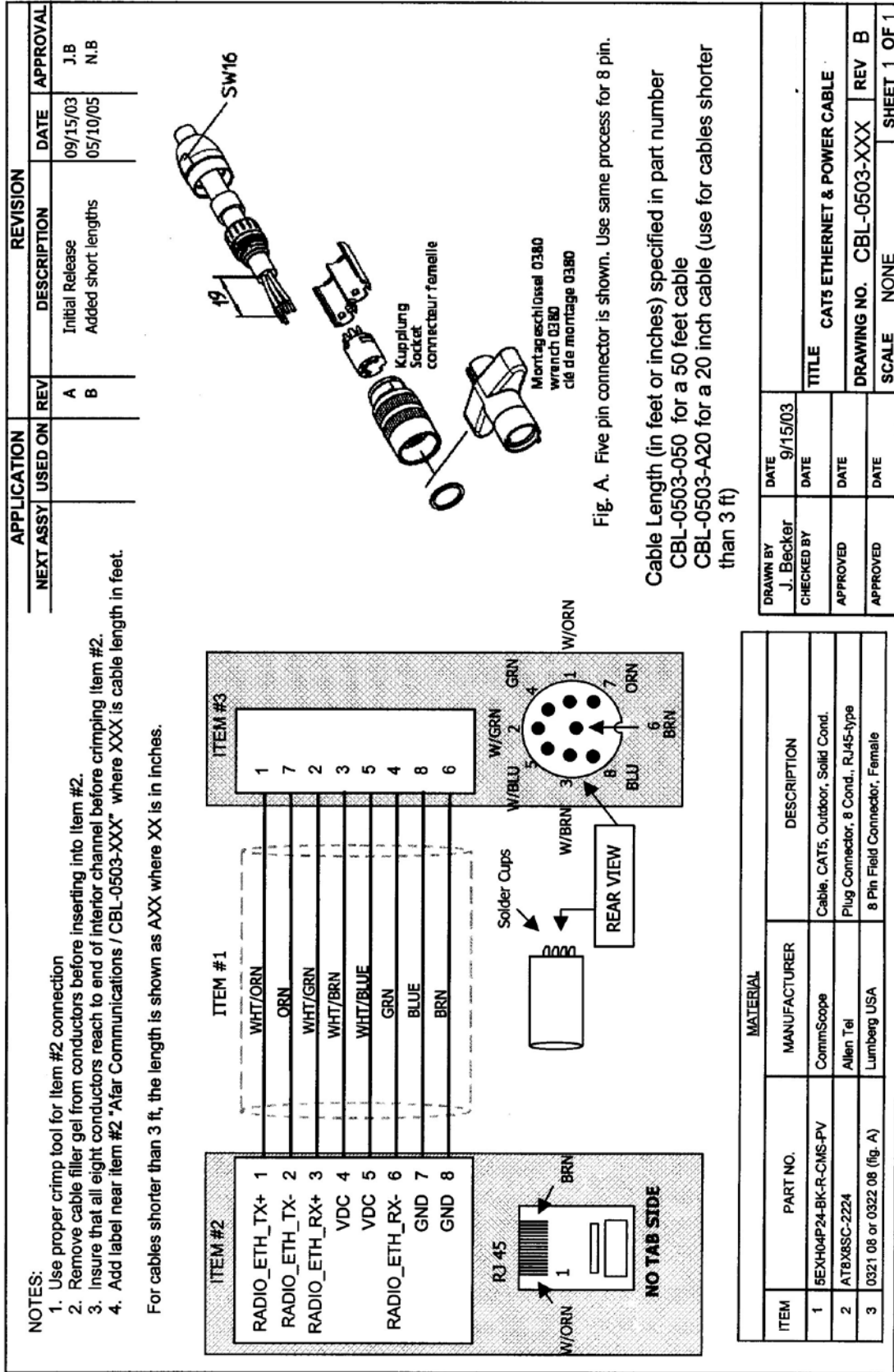


Figure E-1 CAT 5 Ethernet & Power Cable

This page intentionally left blank.

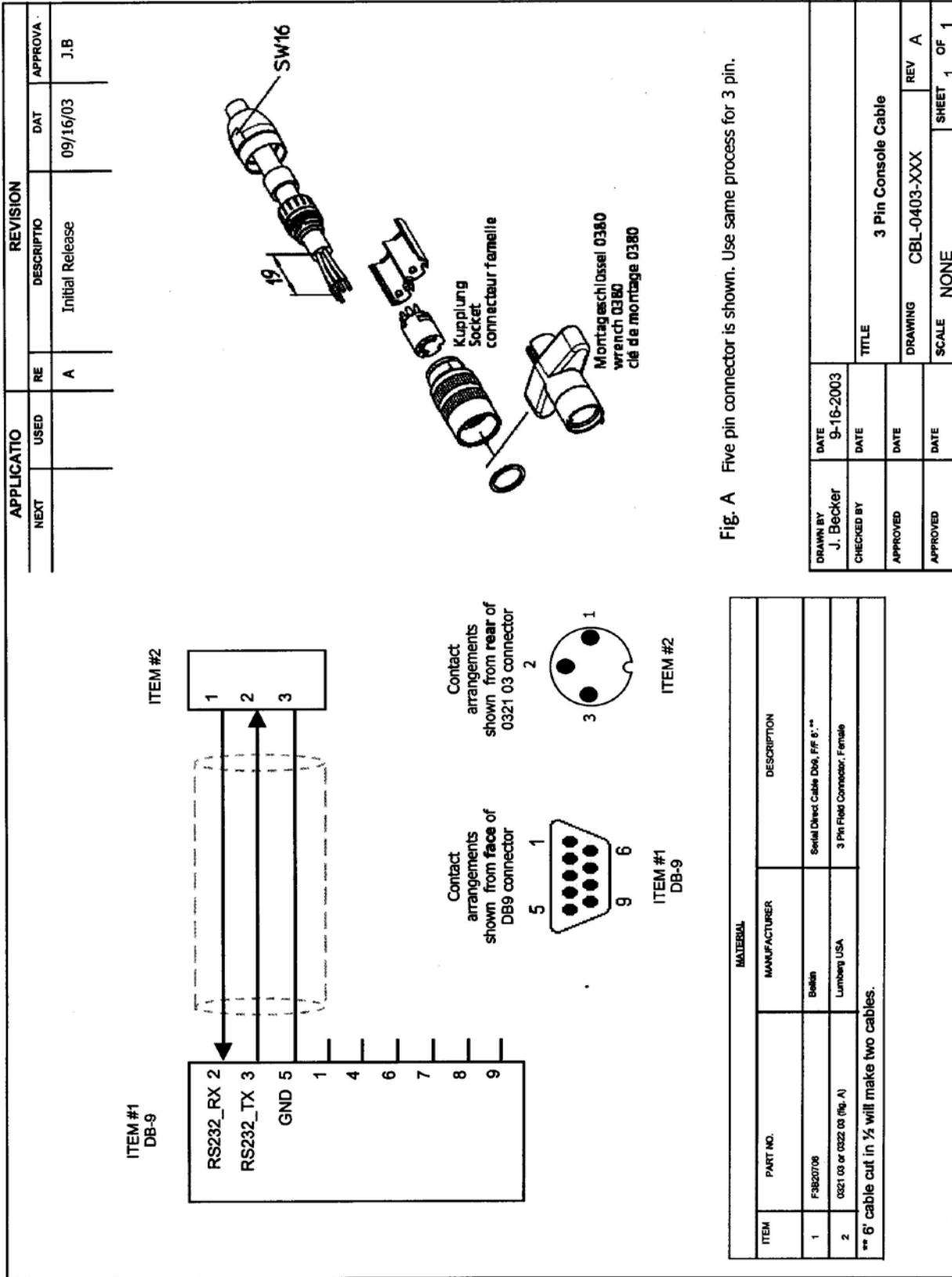
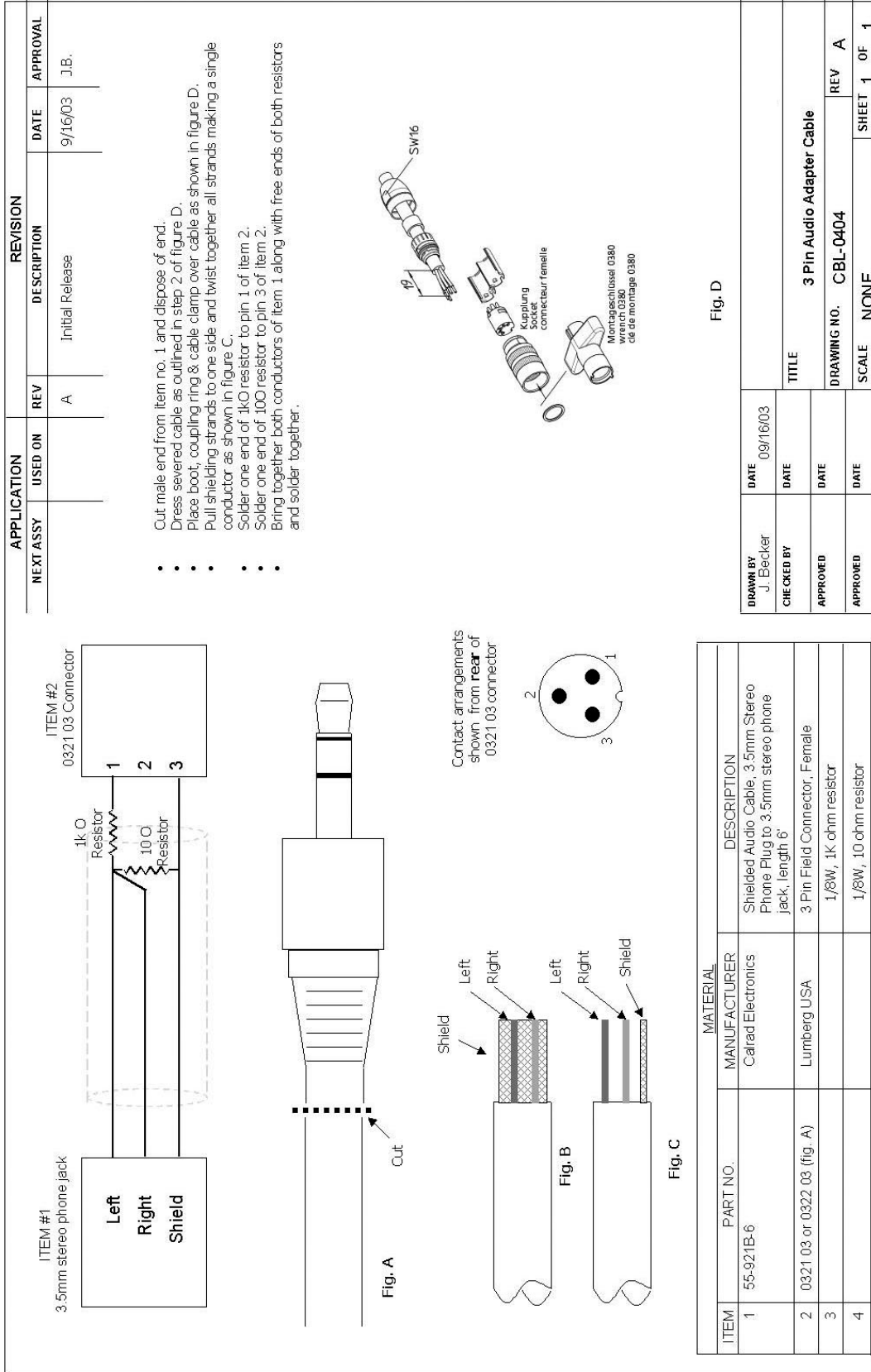


Fig. A Five pin connector is shown. Use same process for 3 pin.

Figure E-2 3-Pin Console Cable

This page intentionally left blank.



This page intentionally left blank.

APPENDIX F QUICK SETUP

F QUICK SETUP

This Appendix contains the following quick setup examples:

Figure F-1 shows a Point to Point quick setup example.

Figure F-2 shows a Point to Multi-Point quick setup example.

Figure F-3 shows a Linear Network quick setup example.

Figure F-4 shows a Tree Network quick setup Example.

Figure F-5 shows a Tree Network and Roaming quick setup Example

This page intentionally left blank.

Point to Point Quick Setup Example

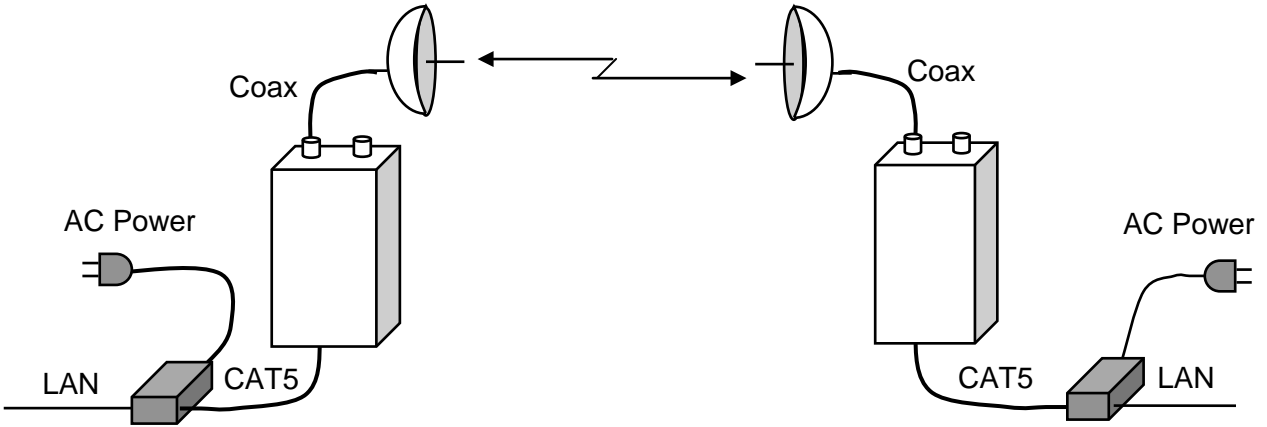


Figure F-1 Point-to-Point Quick Setup Example

Minimal Configuration		
<pre>>load factory >node hub >node max-children=1 >save</pre>		<pre>>load factory >save</pre>
Changing RF Channels (optional)		
<pre>>rf1 rec=18 tr=18</pre>		<pre>>rf1rec=18</pre>
Changing Tx Power (optional)		
<pre>>rf1 power=23</pre>		<pre>>rf1 power=23</pre>
Checking Link Operation		
<pre>>show radios >monitor-link</pre>		<pre>>show radios >monitor-link</pre>

This page intentionally left blank.