

The path to innovative process control

Process control technology is a key lever for gaining a competitive edge in the process industries. In the dynamic age of digitalization, the system you choose needs to address the complex challenges of both today and tomorrow.



Inconsistency

- Fleet wide standardization
- Integrated workflows



Decentralized Workforce

- Remote access
- Mobile operation
- Global collaboration



Limited Resources

- Reduced lifecycle effort
- Ease of use
- Efficient engineering
- Modular automation



System Security

- Built-in cyber security
- Defense in depth

PREPARE FOR THE FUTURE OF PROCESS AUTOMATION WITH SIMATIC PCS neo

REDUCED LIFE CYCLE EFFORT

No software or licenses required on workstations for simplified installation and maintenance

REMOTE ACCESS

Immediate access to the control system from anywhere, using only a secure web connection

MOBILE OPERATION

Visualization of the runtime system from any device with a web browser

EASE OF USE

A consistent, intuitive user interface for all engineering and operations tasks

EFFICIENT ENGINEERING

A single, central database streamlines the implementation of configuration changes

MODULAR AUTOMATION

Simplified integration of modular package units into the DCS

DEFENSE-IN-DEPTH

Multi-level protection covering plant security, network security, and system integrity

BUILT-IN CYBER SECURITY

Protection provided right from installation

INTEGRATED WORKFLOWS

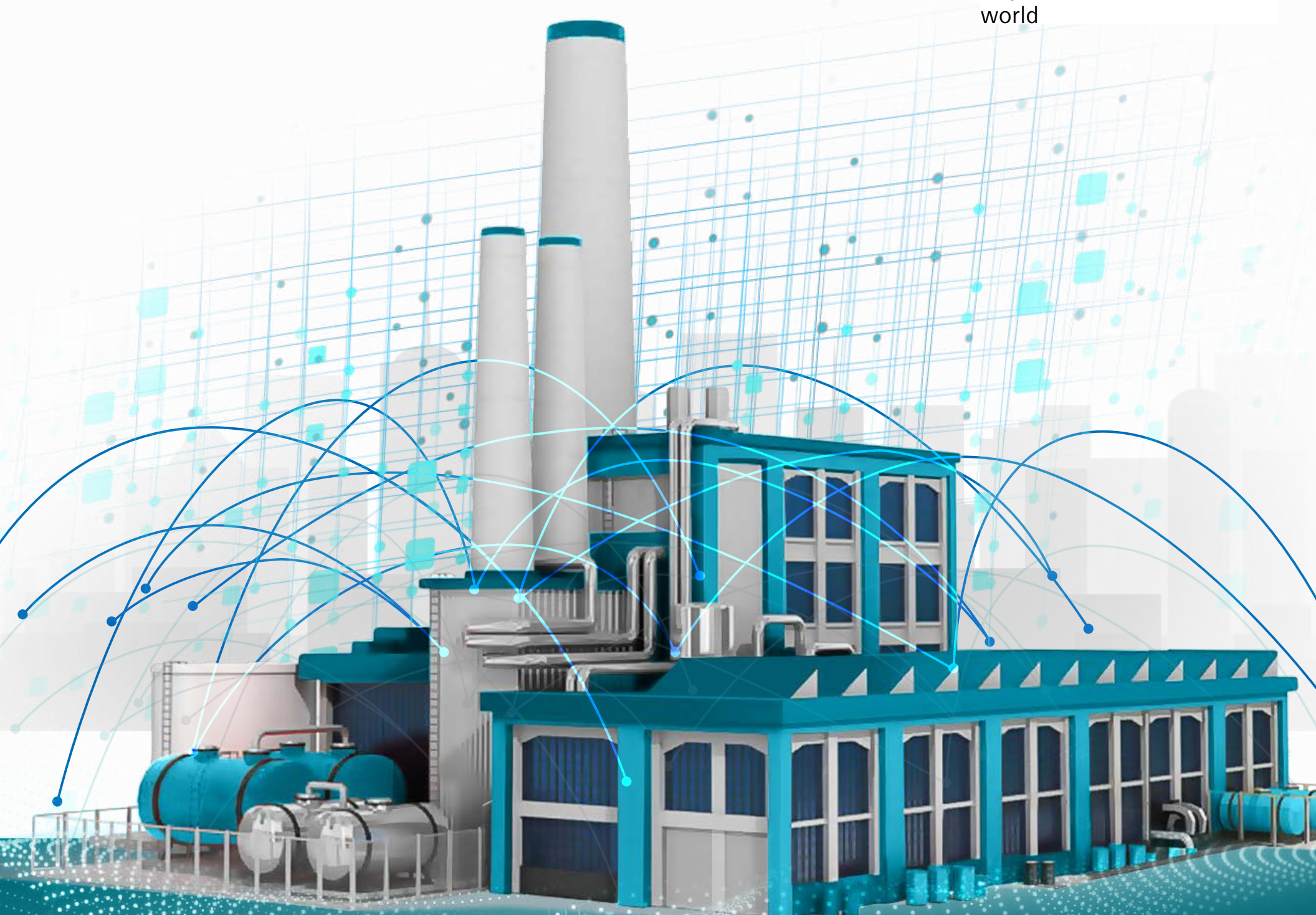
Consistent data exchange between engineering, simulation, and automation

GLOBAL COLLABORATION

Multiple users working on the same project, at the same time, from any location

FLEET WIDE STANDARDIZATION

System scalability from pilot processes to the largest plants in the world



Learn more about how you can leverage recent innovations in process control for safer, more efficient operation at usa.siemens.com/pcsneo.