

| WinCC Unified V18

Kim Meyer-Jacobsen

SIEMENS



Agenda

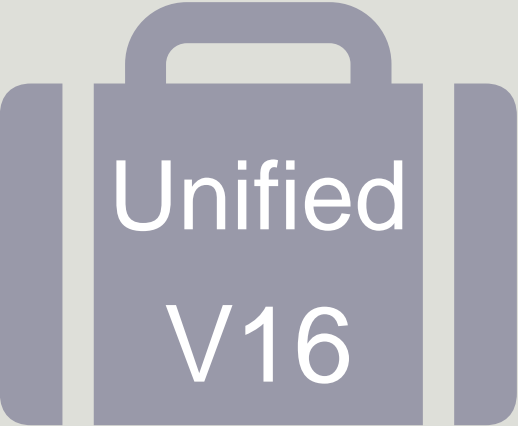
Time Travel

Extract from version 18



SIEMENS

May 2020



WinCC
Unified PC
(UPC)



Unified
Comfort Panel
(UCP)

```

export function Funtion (parameter1, parameter2){
  let tag1 = Tags('MyTag1');
  tag1.Write(123);

  let tag2 = Tags('MyTag2');
  tag1.Write(123);

  if (tag1 > 100) {
    UI.RootWin
    HMIRuntime
  } else {
    HMIRuntime
  }
}

```





Based on web technologies

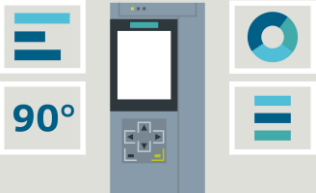
Access from everywhere

Edge enabled

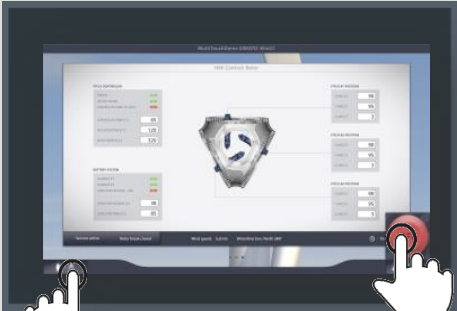


SIEMENS

May 2021



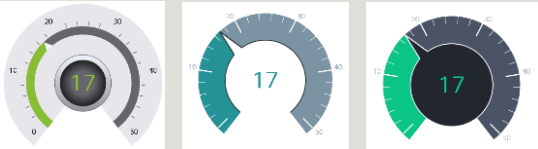
View of Things (VoT)



Multitouch



web client (HTML5)



Styles



SIEMENS

November 2022



310

Hundreds of extensions and improvements to discover



Functions



Zooming



Panning



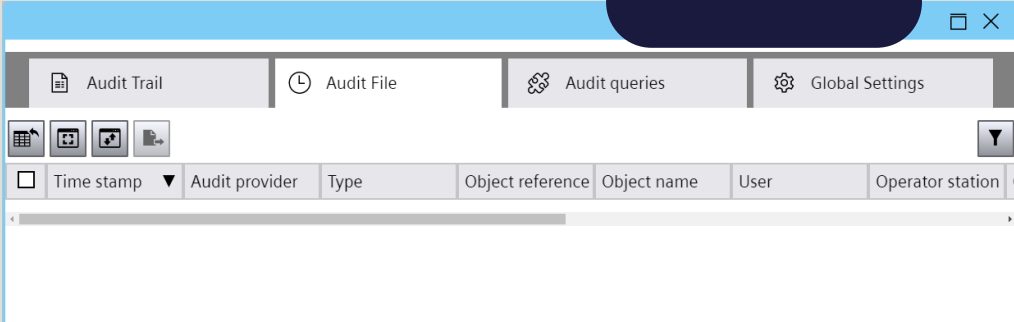
Show more details,
based on zoom factor



RFID
Login



Audit Viewer



Time stamp	Audit provider	Type	Object reference	Object name	User	Operator station
------------	----------------	------	------------------	-------------	------	------------------



Editor

IO field_2 [IO field] IO field_2 [IO field]

Properties Events Te Properties Eve

↓ ↗ 📁 📋 🗑 ⚙ ⭐

Name	Name
▼ General	▼ General
▶ Font	▶ Font
▶ Mode	▶ Mode
▶ Output format	▶ Output format
▶ Process value	▶ Process value
▶ Appearance	▶ Appearance
▼ Format	▼ Miscellaneous
▶ Alignment - horizontal	Name
▶ Alignment - vertical	▼ Size and position
▶ Spacing	▶ Position - left
▶ Text trimming	▶ Position - top
▼ Miscellaneous	▶ Size - height
▶ Connection quality - show	▶ Size - width
▶ Connection status	
Name	
▶ Reaction to input	
Tab index	
▶ Tooltip	

Custom Property Favorites

Layers

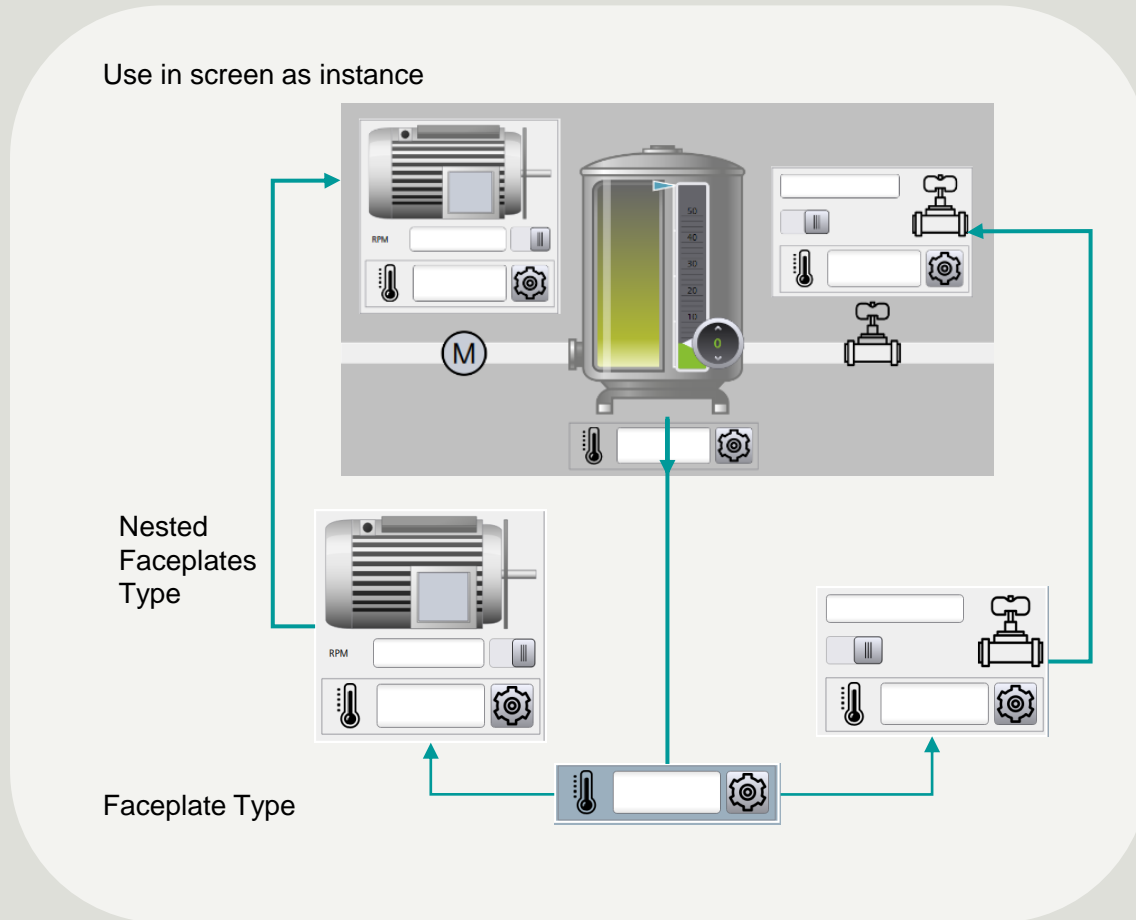
- Screen_1
 - My layer 1
 - Audit Viewer_1
 - IO fields
 - IO field_1
 - IO field_2
 - Common
 - AUX

Naming Layers
Group in Layers
Grid



Faceplate

UCP	✓
UPC	✓
VOT	✗



Height 90 mm Width 120 mm

Parameter A

✗ ✓

Nesting of Faceplates for better Standardization

This block shows a configuration window for a faceplate. It displays dimensions: Height 90 mm and Width 120 mm. Below this is a slider for 'Parameter A'. At the bottom, there are two buttons: one with an 'x' and one with a checkmark.

Trend in Faceplates Online & Historical

This block features a line graph with two data series, one in red and one in blue, plotted against a dark background. The graph shows fluctuating data points over time.

Alarm 1

Alarm 2

Alarm in Faceplates based on filtering

This block displays two horizontal bars representing alarm status. The top bar is red and labeled 'Alarm 1'. The bottom bar is yellow and labeled 'Alarm 2'. Below the bars, the text reads 'Alarm in Faceplates based on filtering'.



Hardware Diagnostic

- UCP ✓
- UPC ✓
- VOT ✗

System Diagnosis Control with Matrix View



Start view

✓ S7-1500/ET200MP stat... 32 0 S7-1500/ET200MP sta... >>	✗ S7-1500/ET200MP stat... 32 0 S7-1500/ET200MP sta... >>	✗ S7-1500/ET200MP stat... 32 0 S7-1500/ET200MP sta... >>
✗ S7-1500/ET200MP stat... 32 0 S7-1500/ET200MP sta... >>	✗ S7-1500/ET200MP stat... 32 0 S7-1500/ET200MP sta... >>	

Start view

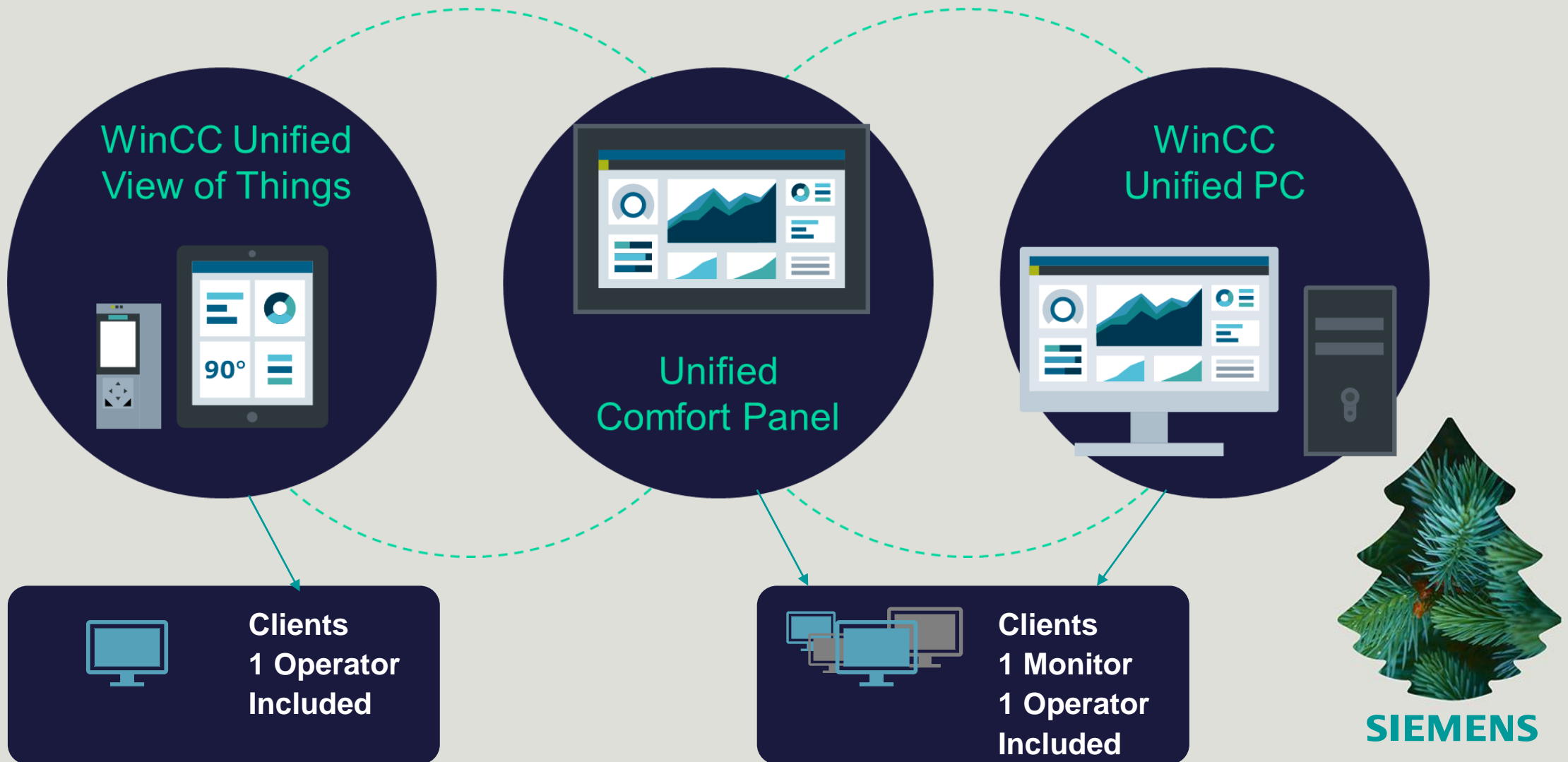
Event number		Date & Time	Event text
1	✗	2/24/22 6:49:26	IP address (192..
2	✓	2/24/22 6:49:24	Follow-on opera
3	✓	2/24/22 6:49:24	Follow-on opera
4	✓	2/24/22 6:49:24	Follow-on opera
5	✓	2/24/22 6:49:24	PLC project chan
6	✓	2/24/22 6:49:23	Boot up - CPU cl
7	✓	2/14/22 5:28:10	Shut down - CPI
8	✓	2/14/22 5:20:42	Communication

S7-1500/ET200MP station_21_PLC_2



SIEMENS

The Family



The journey is just beginning



SIEMENS